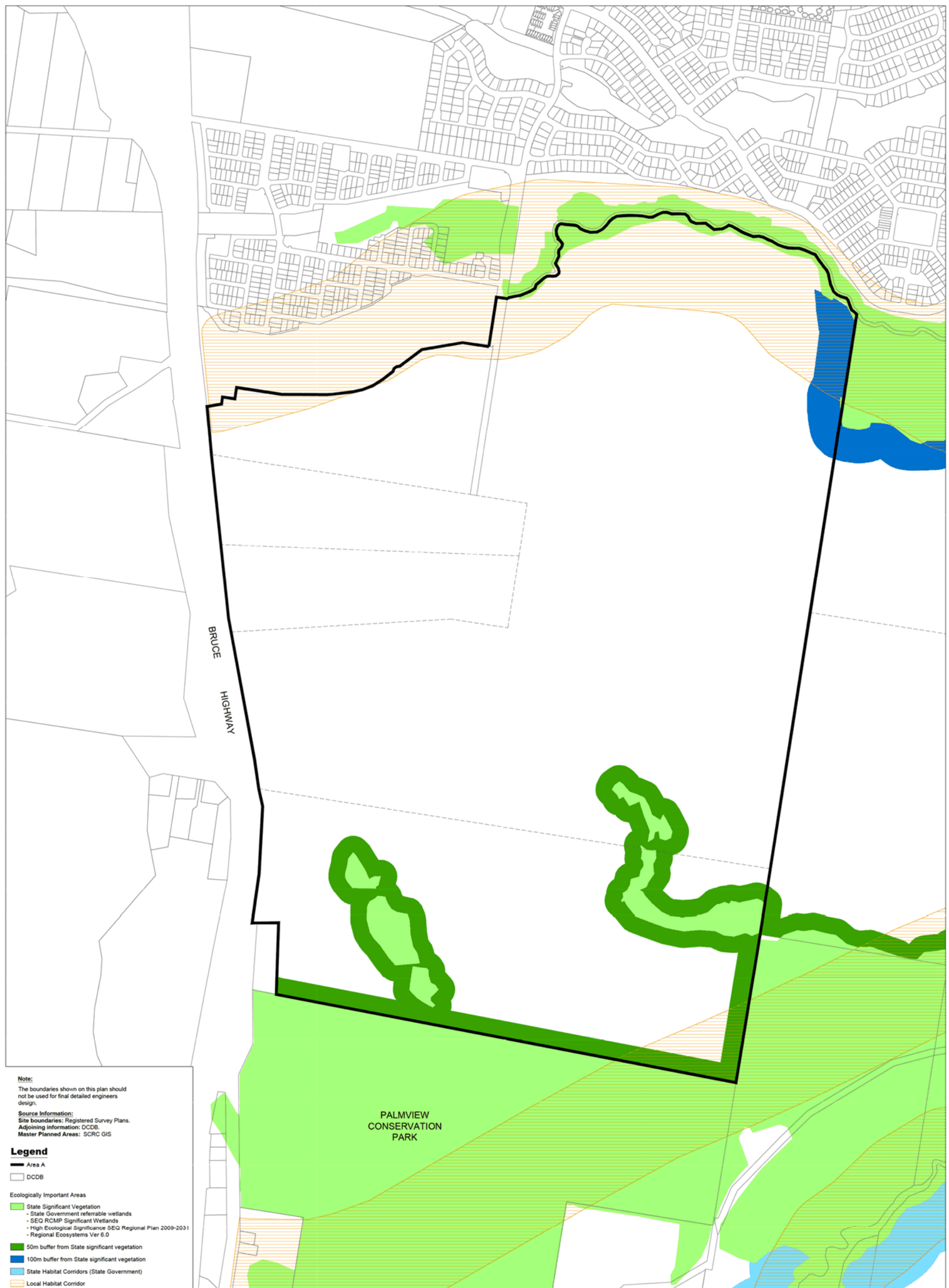


OPM P2(a) - Area Development (Flood Prone Land) Plan



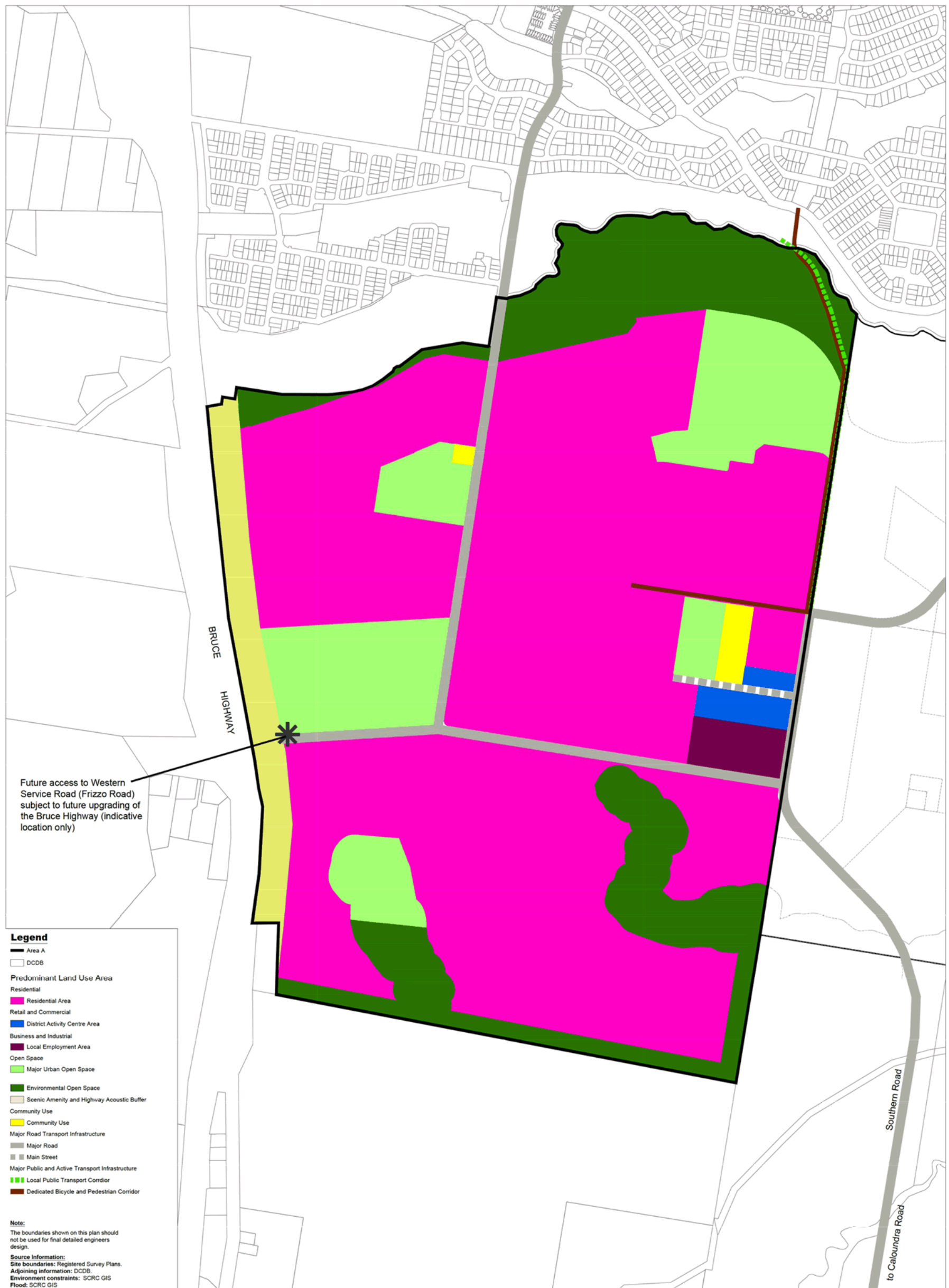
SCALE 1 : 5000 @ A1 | DATE JUNE 2016 | DWG # 22470 - 288d



OPM P2(b) - Area Development (Ecologically Important Areas) Plan



SCALE 1 : 5000 @ A1 | DATE JUNE 2016 | DWG # 22470 - 289d



- Legend**
- Area A
 - DCDB
 - Predominant Land Use Area**
 - Residential
 - Residential Area
 - Retail and Commercial
 - District Activity Centre Area
 - Business and Industrial
 - Local Employment Area
 - Open Space
 - Major Urban Open Space
 - Environmental Open Space
 - Scenic Amenity and Highway Acoustic Buffer
 - Community Use
 - Community Use
 - Major Road Transport Infrastructure
 - Major Road
 - Main Street
 - Major Public and Active Transport Infrastructure
 - Local Public Transport Corridor
 - Dedicated Bicycle and Pedestrian Corridor

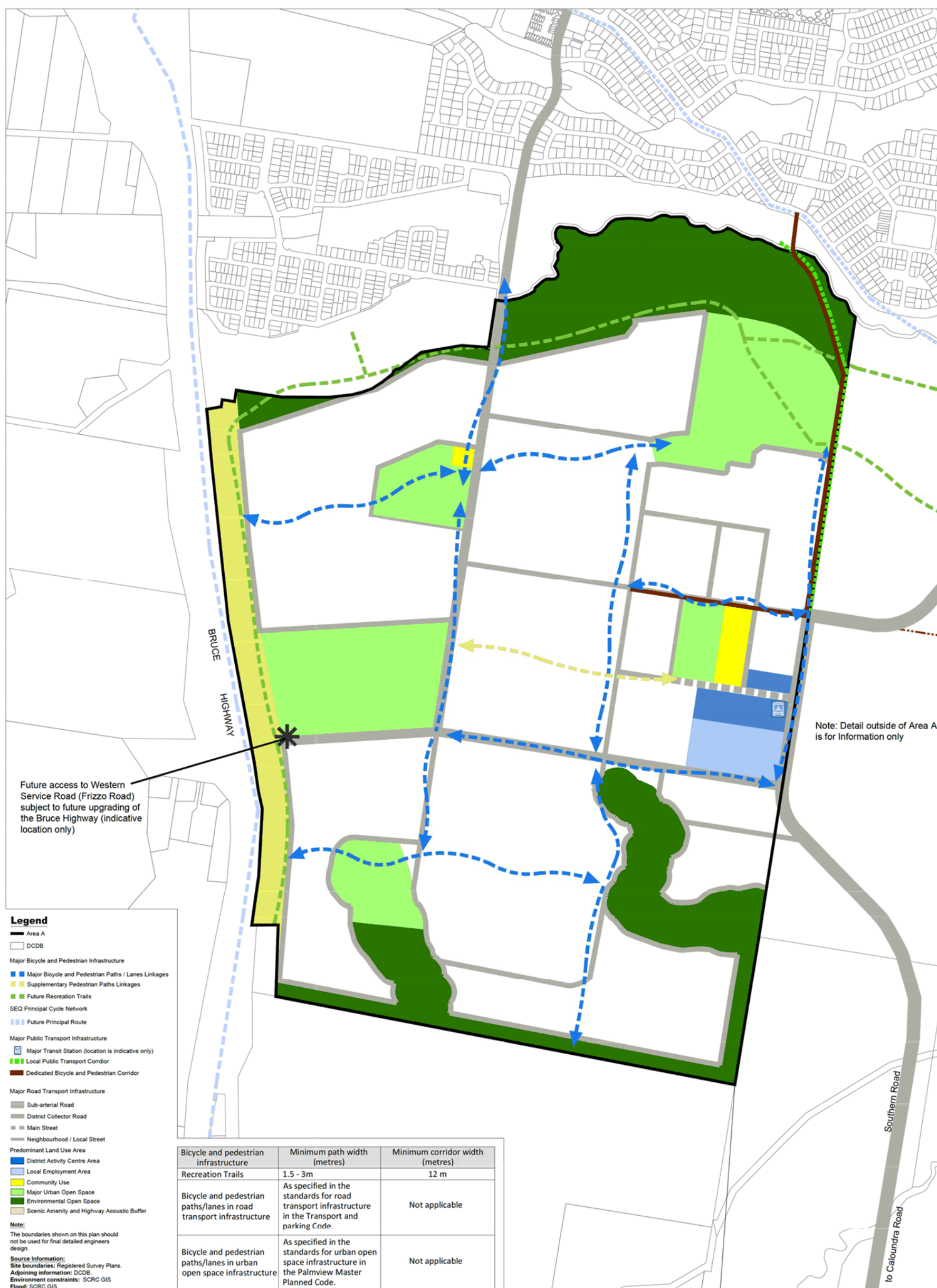
Note:
 The boundaries shown on this plan should not be used for final detailed engineers design.

Source Information:
 Site boundaries: Registered Survey Plans.
 Adjoining information: DCDB.
 Environment constraints: SCRC GIS
 Flood: SCRC GIS

OPM P3 - Area Development (Land Use Structure) Plan



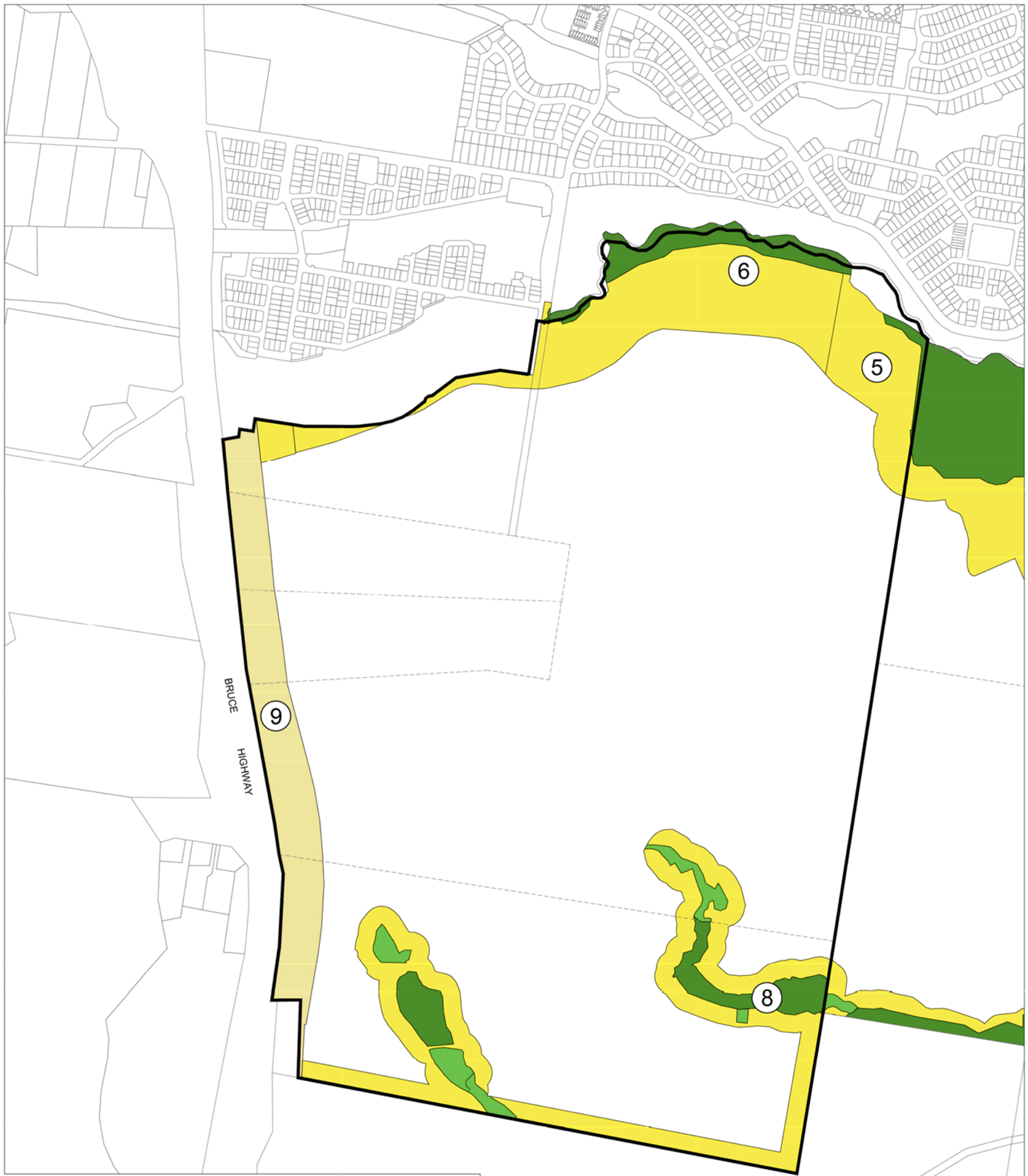
SCALE 1 : 5000 @ A1 | DATE JUNE 2016 | DWG # 22470 - 279d



OPM P10 - Area Development (Bicycle and Pedestrian Infrastructure Network) Plan



SCALE 1 : 5000 @ A1 | DATE JUNE 2016 | DWG # 22470 - 285d



Note:
The boundaries shown on this plan should not be used for final detailed engineers design.
Source Information:
Site boundaries: Registered Survey Plans.
Adjoining Information: DCDB.
Master Planned Areas: SCRC GIS

Legend

- Area A
- DCDB
- Ⓢ Ecological and Landscape Protection and Rehabilitation Landscape Units
- Non-urban Open Space Infrastructure
- Environmental Protection Area
- Environmental Enhancement Area - Type A
- Environmental Enhancement Area - Type B
- Environmental Transition Area
- Scenic Amenity and Highway Acoustic Buffer

Ecological and landscape protection and rehabilitation landscape units	
Ecological and landscape protection and rehabilitation landscape units	Area A (ha)
5	9.1
6	24.4
8	32.4
9	19.8
Land required for ecological and landscape provision and rehabilitation	
	85.7

Land requirements for ecological and landscape protection and rehabilitation				
Area (see Map OPM P5)	Percentage of land suitable for urban development in Palmview Master Planned Area	Land provision based on land suitable for urban development (ha)	Land available in each Area to satisfy land requirements (ha)	Additional (Surplus) required to satisfy land requirements (ha)
A	66.5	321.4	85.7	235.7



OPM P12 - Area Development (Non-urban Open Space Infrastructure Network) Plan



SCALE 1 : 5000 @ A1 | DATE JUNE 2016 | DWG # 22470 - 291d