

Sunshine Coast Regional Council

Amendment Subordinate Local Law No. 1 (Miscellaneous) 2016

Contents

Part 1	Preliminary.....	2
1	Short title.....	2
2	Commencement	2
Part 2	Amendment of Subordinate Local Law No.2 (Animal Management) 2011	2
3	Subordinate local law amended	2
4	Amendment of sch 1 (Prohibition on keeping animals in prescribed circumstances).....	2
5	Amendment of sch 2 (Requirement for approval to keep animal) ...	2
6	Amendment of sch 3 (Minimum standards for keeping particular animals).....	3
7	Amendment of sch 5 (Exclusion of animals from specific places)..	3
8	Amendment of sch 6 (Dog off-leash areas).....	7
Part 3	Amendment of Subordinate Local Law No.4 (Local Government Controlled Areas, Facilities, Infrastructure and Roads) 2011	13
9	Subordinate local law amended	13
10	Amendment of sch 2 (Restricted activities for local government controlled areas, facilities, infrastructure or roads).....	13
Part 4	Amendment of Subordinate Local Law No.5 (Parking) 2011	14
11	Subordinate local law amended	14
12	Amendment of sch 2 (Declaration of off-street regulated parking areas)	14
13	Amendment of sch 3 (Persons who may be issued with a parking permit)	67

Part 1 Preliminary

1 Short title

This subordinate local law may be cited as *Amendment Subordinate Local Law No.1 (Miscellaneous) 2016*.

2 Commencement

This subordinate local law commences on the date it is published in the gazette.

Part 2 Amendment of Subordinate Local Law No.2 (Animal Management) 2011

3 Subordinate local law amended

This part amends *Subordinate Local Law No.2 (Animal Management) 2011*.

4 Amendment of sch 1 (Prohibition on keeping animals in prescribed circumstances)

- (1) Schedule 1, row 1, column 2, items 1, 2 and 3, 'lot'—

omit, insert—

property

- (2) Schedule 1, row 1, column 2, item 1, 'less than'—

omit, insert—

up to

- (3) Schedule 1, row 1, column 2, item 2, '400'—

omit, insert—

401

- (4) Schedule 1, row 1, column 2—

insert—

4 more than 10 bee hives must not be kept on a property between 2001 square metres and 4000 square metres in size

5 Amendment of sch 2 (Requirement for approval to keep animal)

- (1) Schedule 2, heading, 'animal'—

omit, insert—

animals

- (2) Schedule 2, rows 1, 2, and 3, row 4, items 1 and 2, and row 5, 'lot'—
omit, insert—
property
- (3) Schedule 2, row 5, column 1, before 'rooster'—
insert—
cockerel,
- (4) Schedule 2, row 5, column 2, after 'keep a'—
insert—
cockerel,

6 Amendment of sch 3 (Minimum standards for keeping particular animals)

- Schedule 3, row 1, item 2(a), (b) and (c), row 2, item 2(a), (b) and (c), 'lot'—
omit, insert—
property

7 Amendment of sch 5 (Exclusion of animals from specific places)

- (1) Schedule 5, after row 11—
insert—

park/reserve	Mooloolaba Beach, Mooloolaba (beach access 171 to 195)	all animals	SLL 2.5.12
park/reserve	Quota/Eleanor Shipley Park, Moffat Beach	all animals	SLL 2.5.13

(2) Schedule 5, map SLL2.5.9—

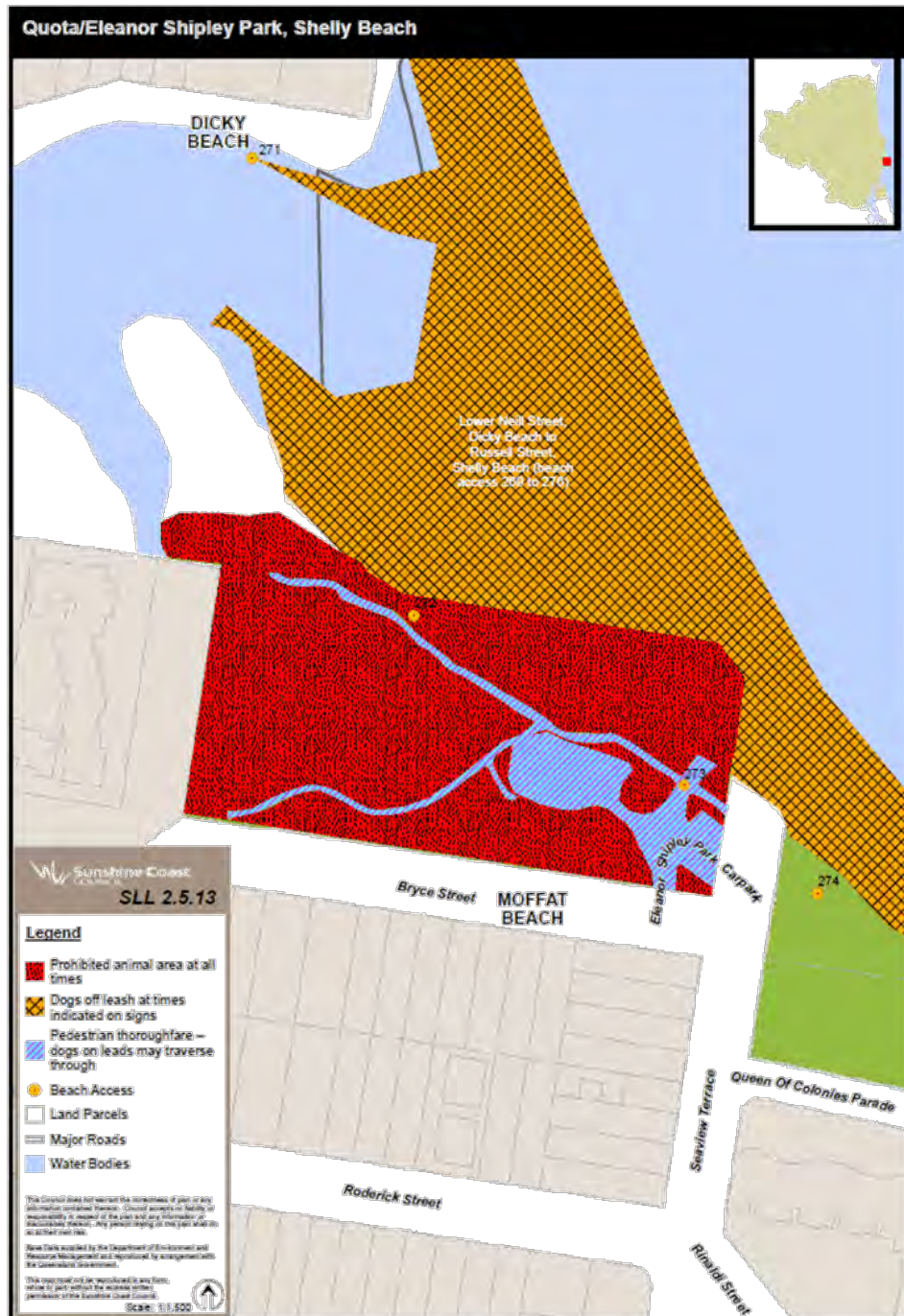
omit, insert—



(3) Schedule 5, after map SLL 2.5.11—

insert—





8 Amendment of sch 6 (Dog off-leash areas)

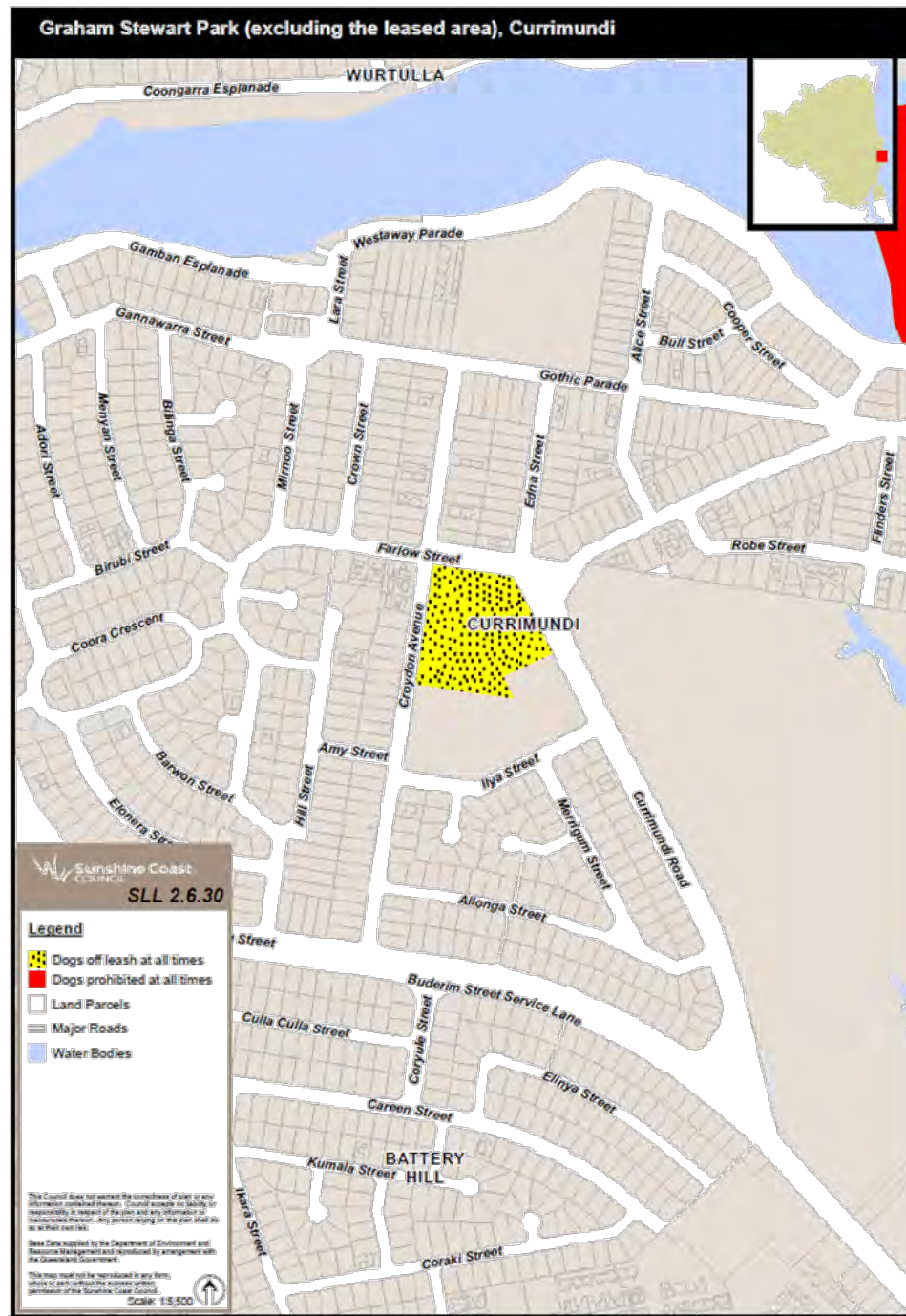
- (1) Schedule 6, row 6, column 2, 'North Shore Beach, Mudjimba'—
omit, insert—
North Shore, Twin Waters
- (2) Schedule 6, row 15 (relating to Chancellor Village Park), column 3, 'at times
indicated on signs'—
omit, insert—
all times
- (3) Schedule 6, row 26, column 2, 'Cooroora'—
omit, insert—
Lower Neil
- (4) Schedule 6, row 26, column 2, '270'—
omit, insert—
269

(5) Schedule 6, map SLL2.6.16—

omit, insert—



- (6) Schedule 6, map SLL2.6.30—
omit, insert—



(7) Schedule 6, map SLL2.6.31—

omit, insert—



(8) Schedule 6, map SLL2.6.35—

omit, insert—



(9) Schedule 6, map SLL2.6.36—

omit, insert—



Part 3 Amendment of Subordinate Local Law No.4 (Local Government Controlled Areas, Facilities, Infrastructure and Roads) 2011

9 Subordinate local law amended

This part amends *Subordinate Local Law No.4 (Local Government Controlled Areas, Facilities, Infrastructure and Roads) 2011*.

10 Amendment of sch 2 (Restricted activities for local government controlled areas, facilities, infrastructure or roads)

Schedule 2, after row 1—

insert—

all local government controlled areas and roads	camp	permitted only— (a) in a place designated by the local government as a camping ground; or (b) where the camping is authorised under a condition of an approval granted under <i>Local Law No.1 (Administration) 2011</i>
all local government controlled areas and roads	ride a horse	permitted only— (a) where signs erected by the local government authorise the riding of horses at the place; or (b) where the riding of horses is authorised under a condition of an approval granted under <i>Local Law No.1 (Administration) 2011</i> <i>Example for paragraph (b) —</i> An approval for a temporary entertainment event in a park might authorise the riding of horses.
all local government controlled areas and roads	abseiling	permitted only— (a) where signs erected by the local government authorise abseiling at the place; or (b) where abseiling is authorised under a condition of an

		<p>approval granted under <i>Local Law No.1 (Administration) 2011</i></p> <p><i>Example for paragraph (b)</i></p> <p>An approval for a temporary entertainment event in a park might authorise abseiling.</p>
all local government controlled areas and roads	rock climbing	<p>permitted only—</p> <p>(a) where signs erected by the local government authorise rock climbing at the place; or</p> <p>(b) where rock climbing is authorised under a condition of an approval granted under <i>Local Law No.1 (Administration) 2011</i></p> <p><i>Example for paragraph (b) —</i></p> <p>An approval for a temporary entertainment event in a park might authorise rock climbing.</p>

Part 4 Amendment of Subordinate Local Law No.5 (Parking) 2011

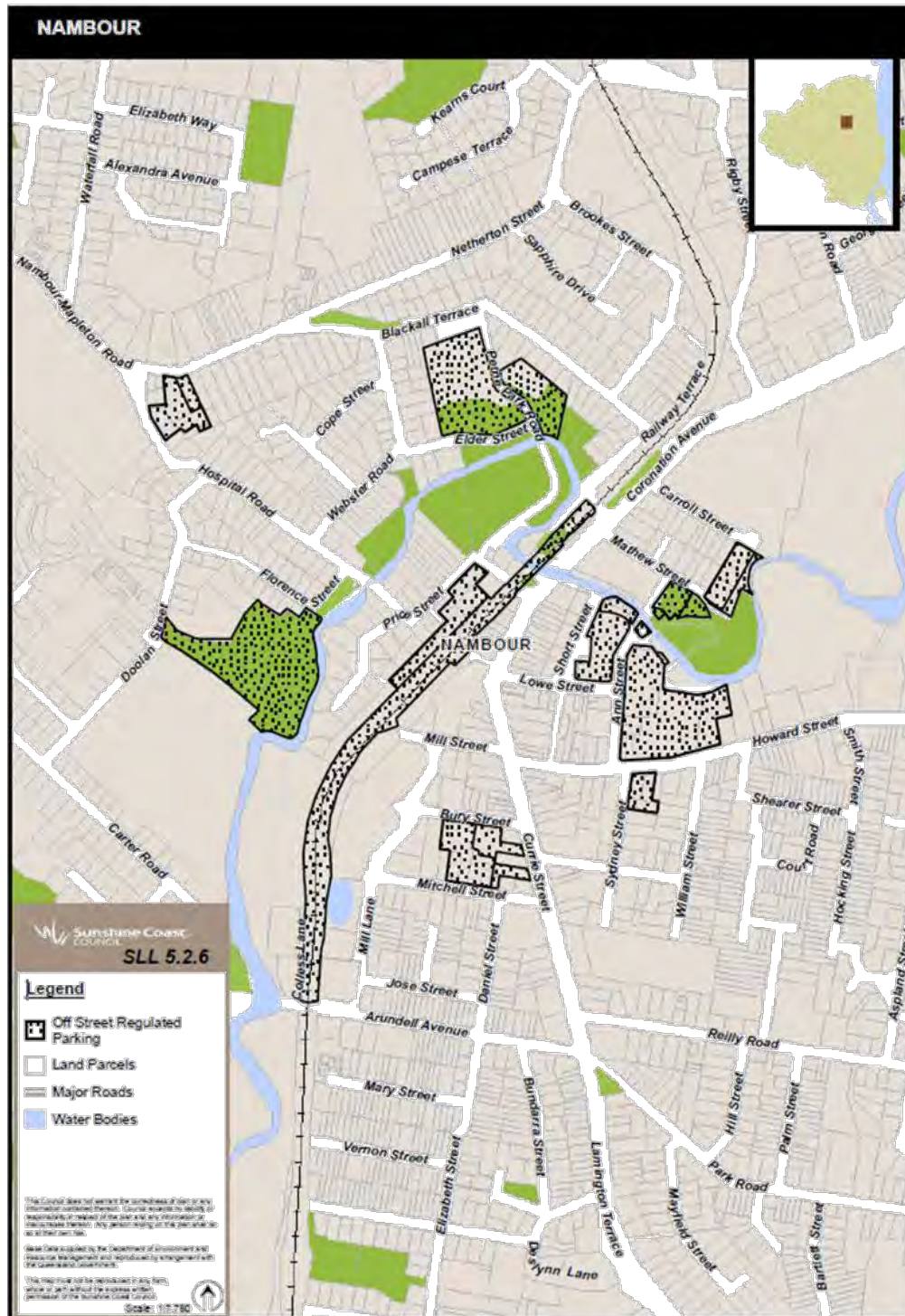
11 Subordinate local law amended

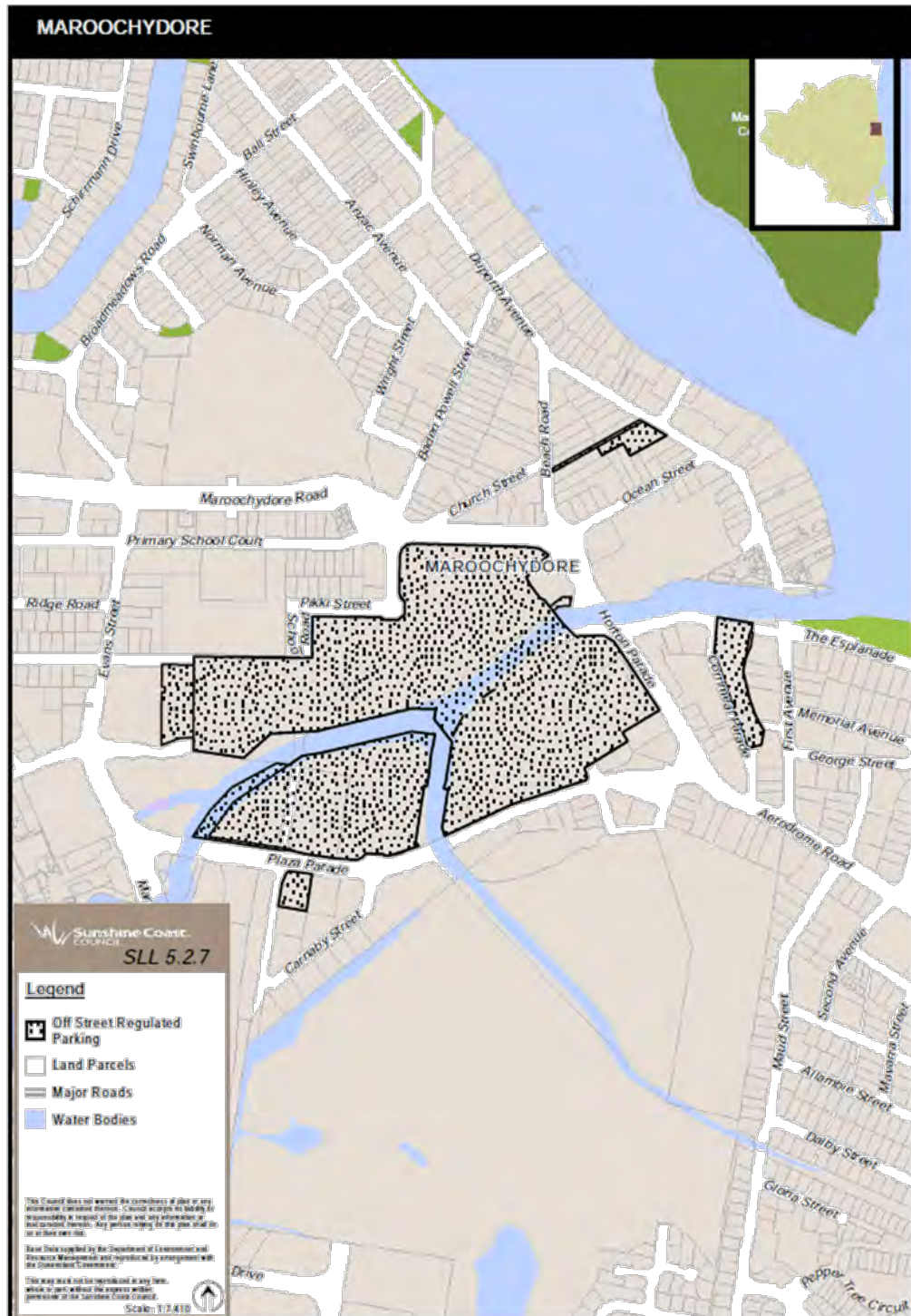
This part amends *Subordinate Local Law No.5 (Parking) 2011*.

12 Amendment of sch 2 (Declaration of off-street regulated parking areas)

- (1) Schedule 2, maps SLL5.2.5, SLL5.2.6, SLL5.2.7, SLL5.2.8, SLL5.2.9, SLL5.2.10, SLL5.2.11, SLL5.2.12, SLL5.2.13, SLL5.2.14, SLL5.2.15, SLL5.2.16—
omit.
- (2) Schedule 2—
insert—

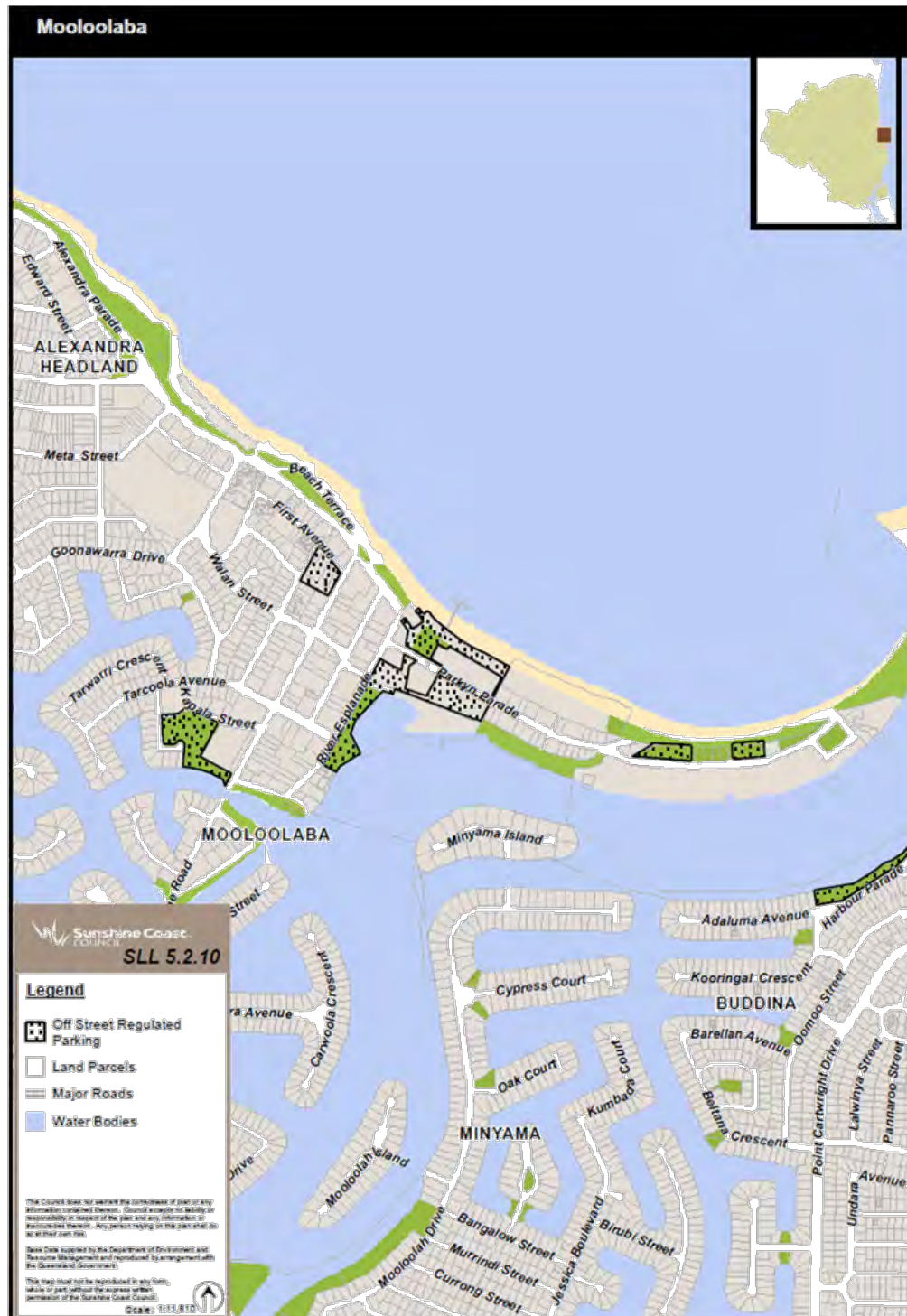


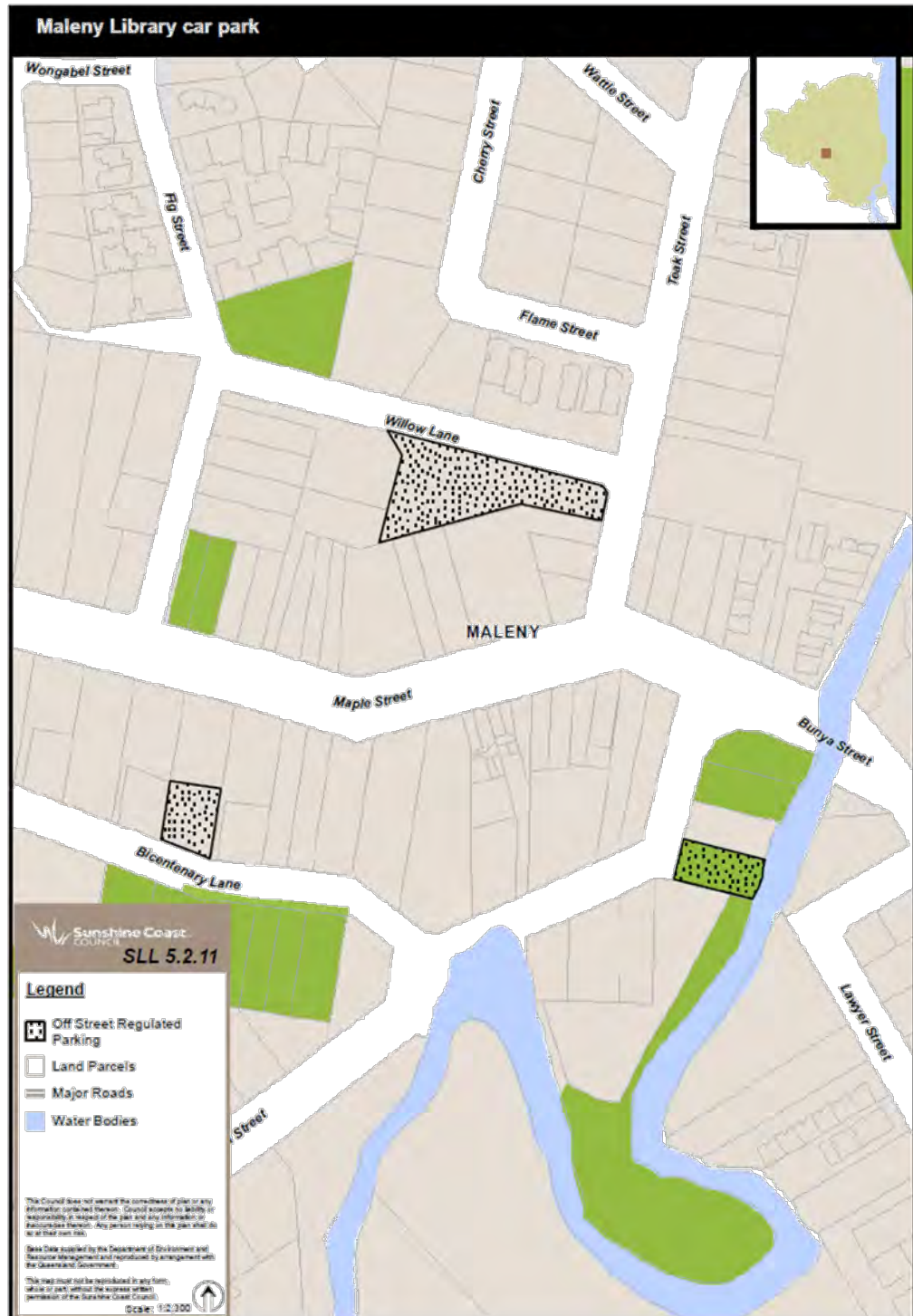


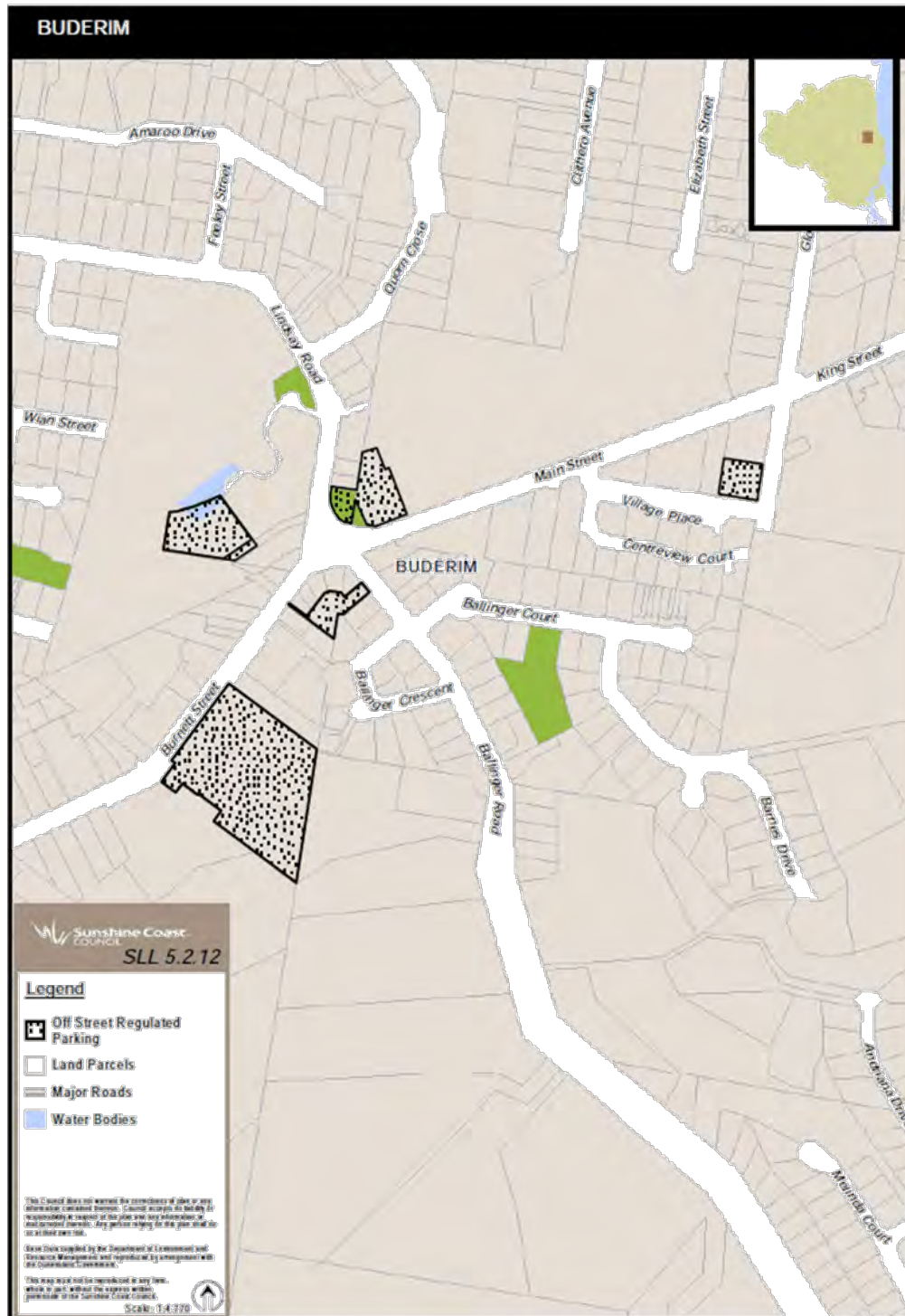


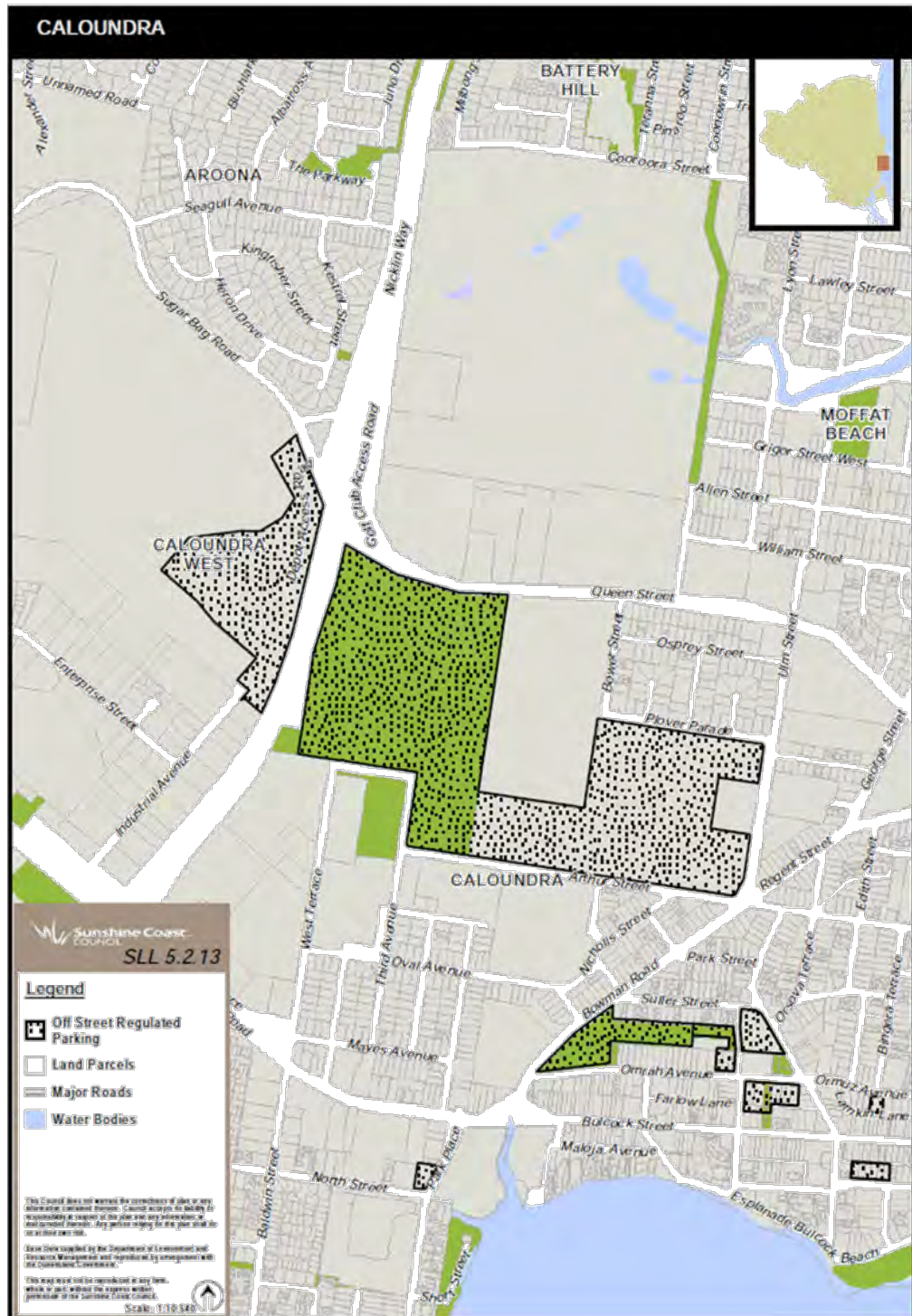




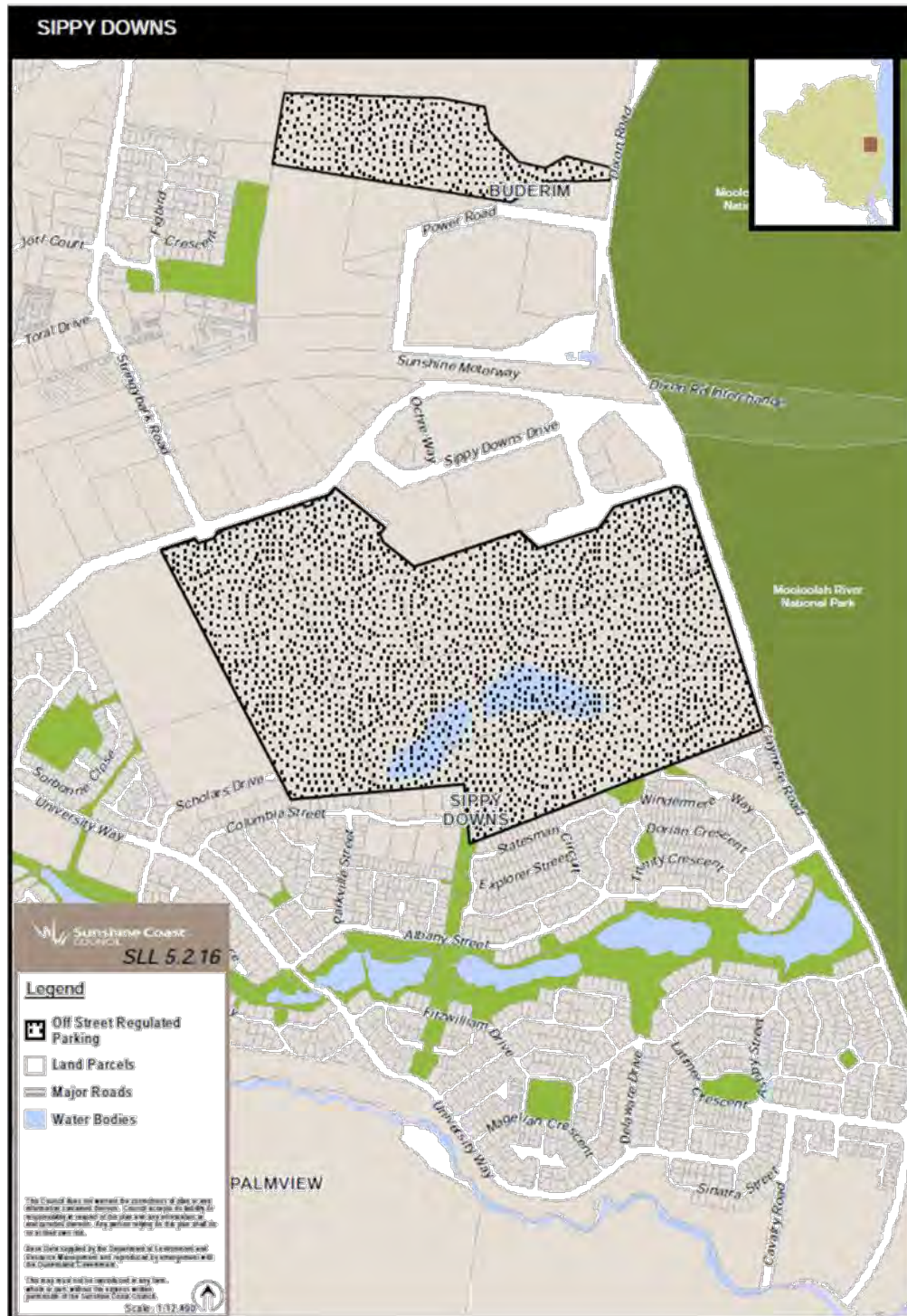


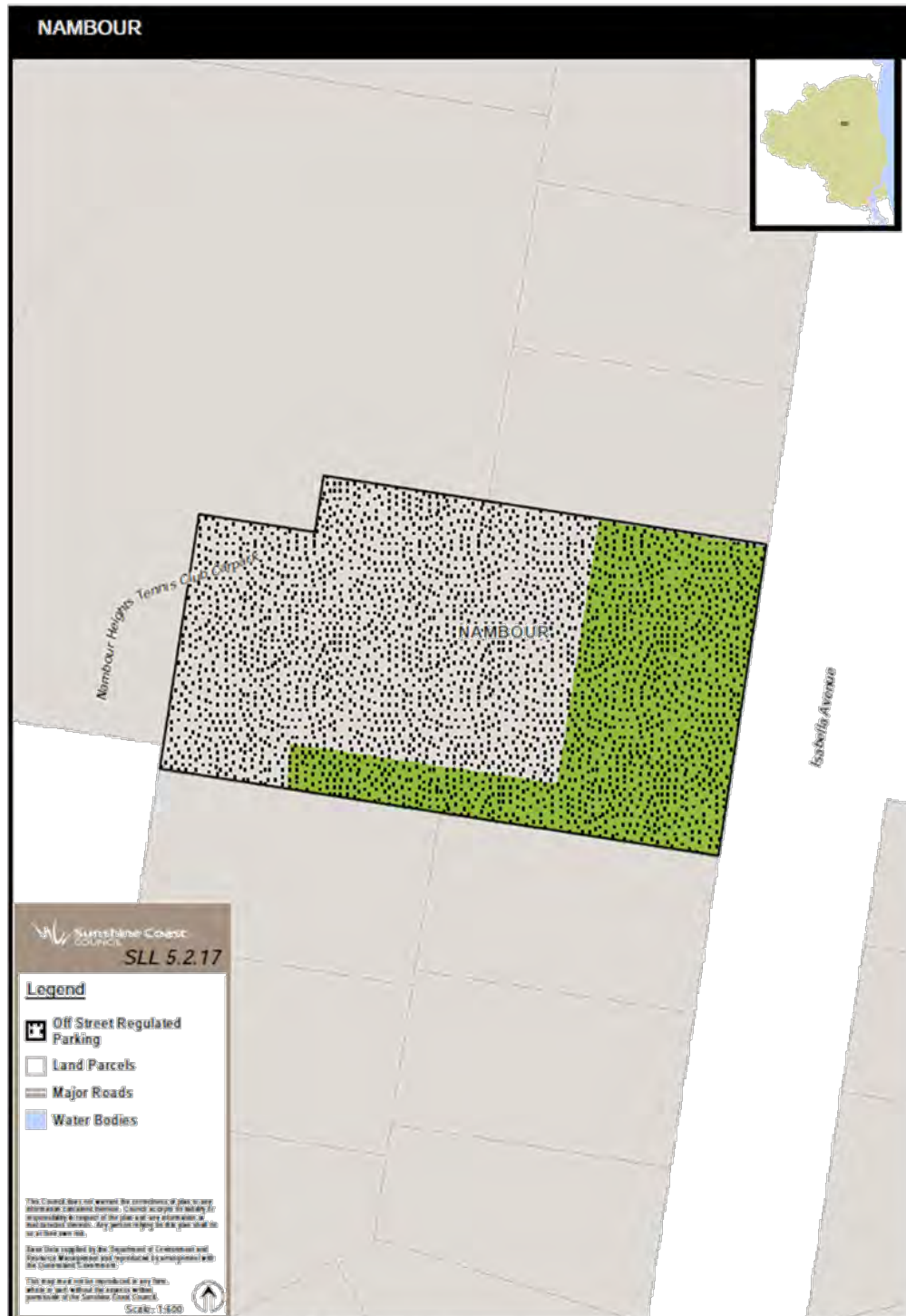


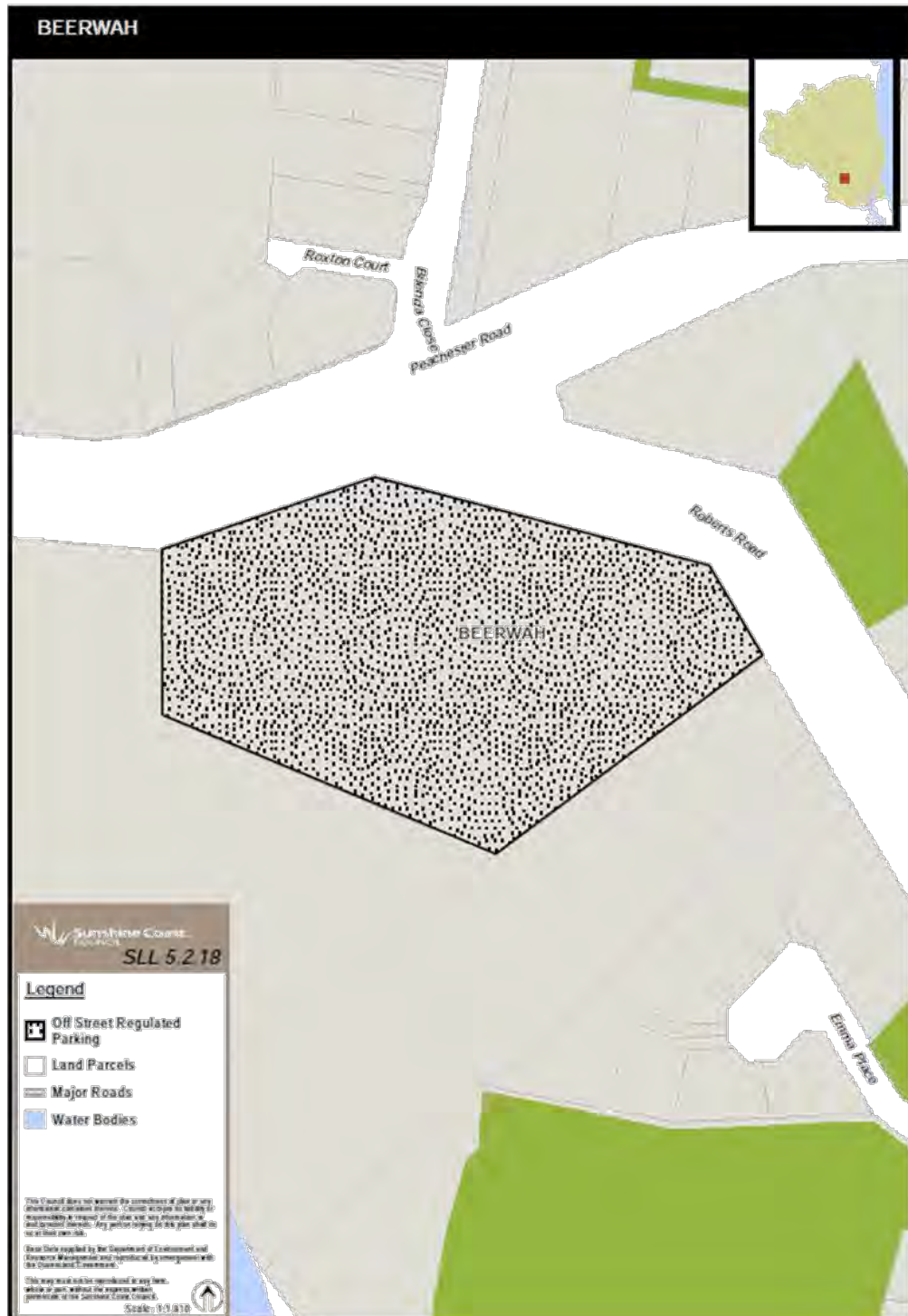




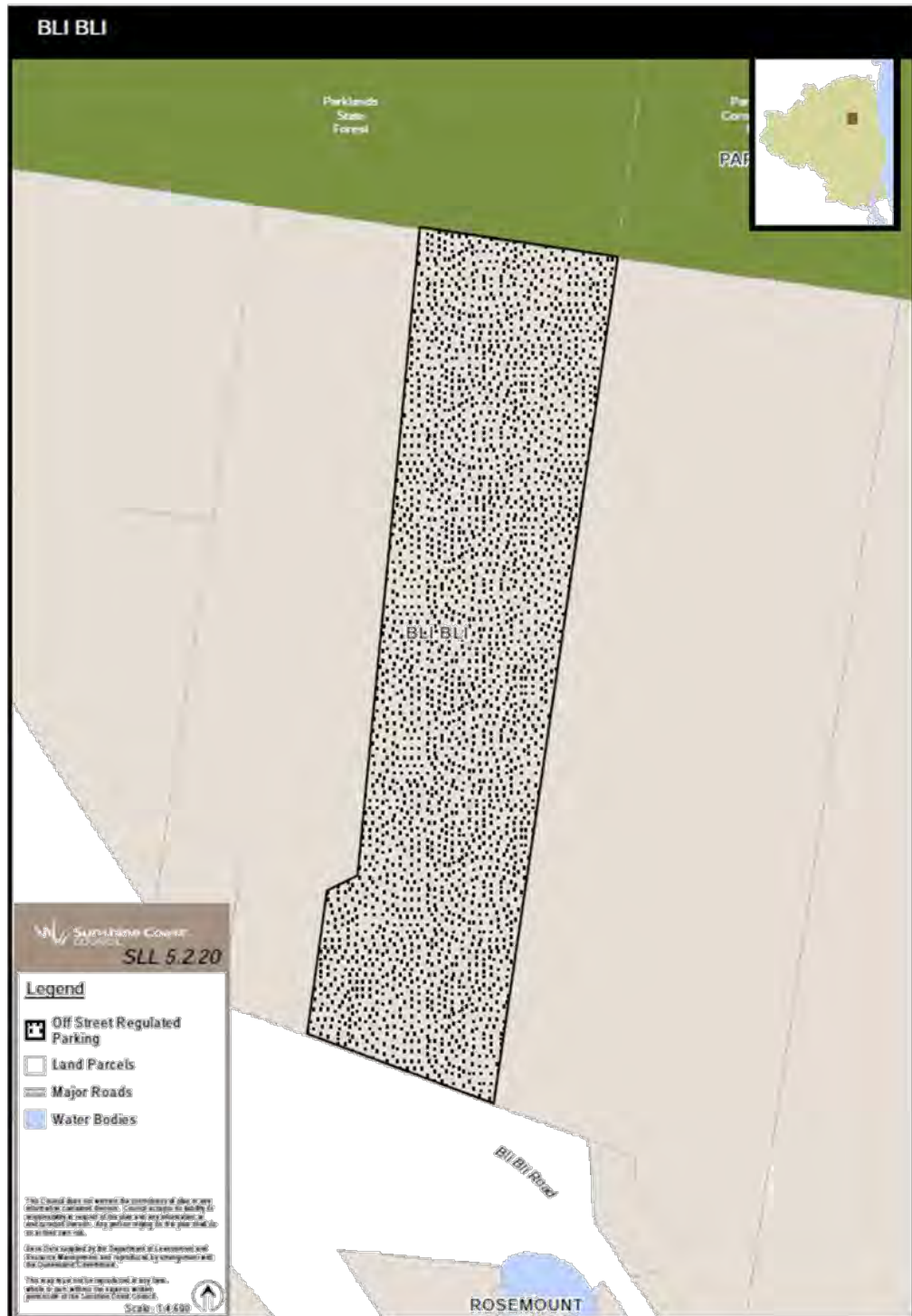






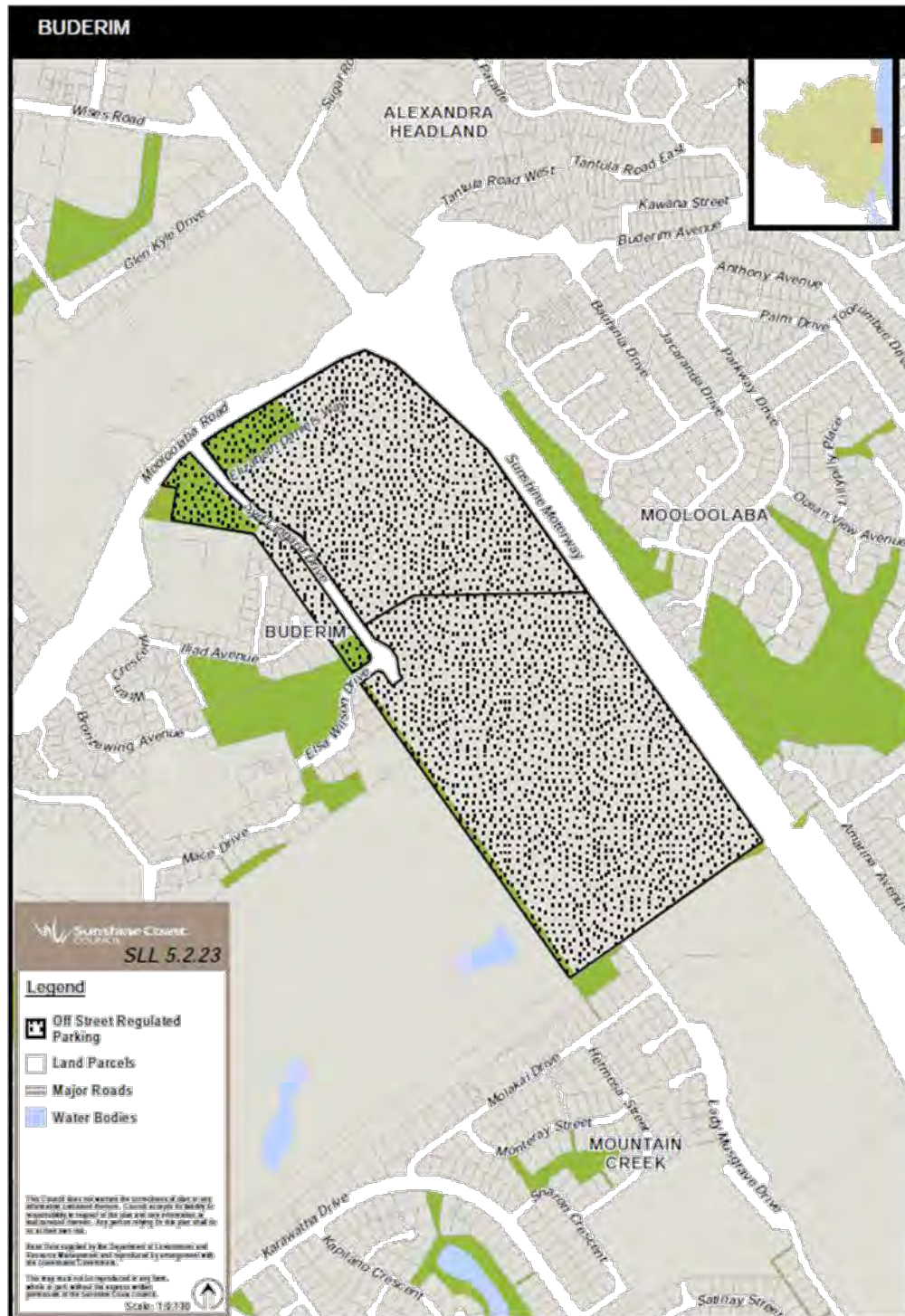


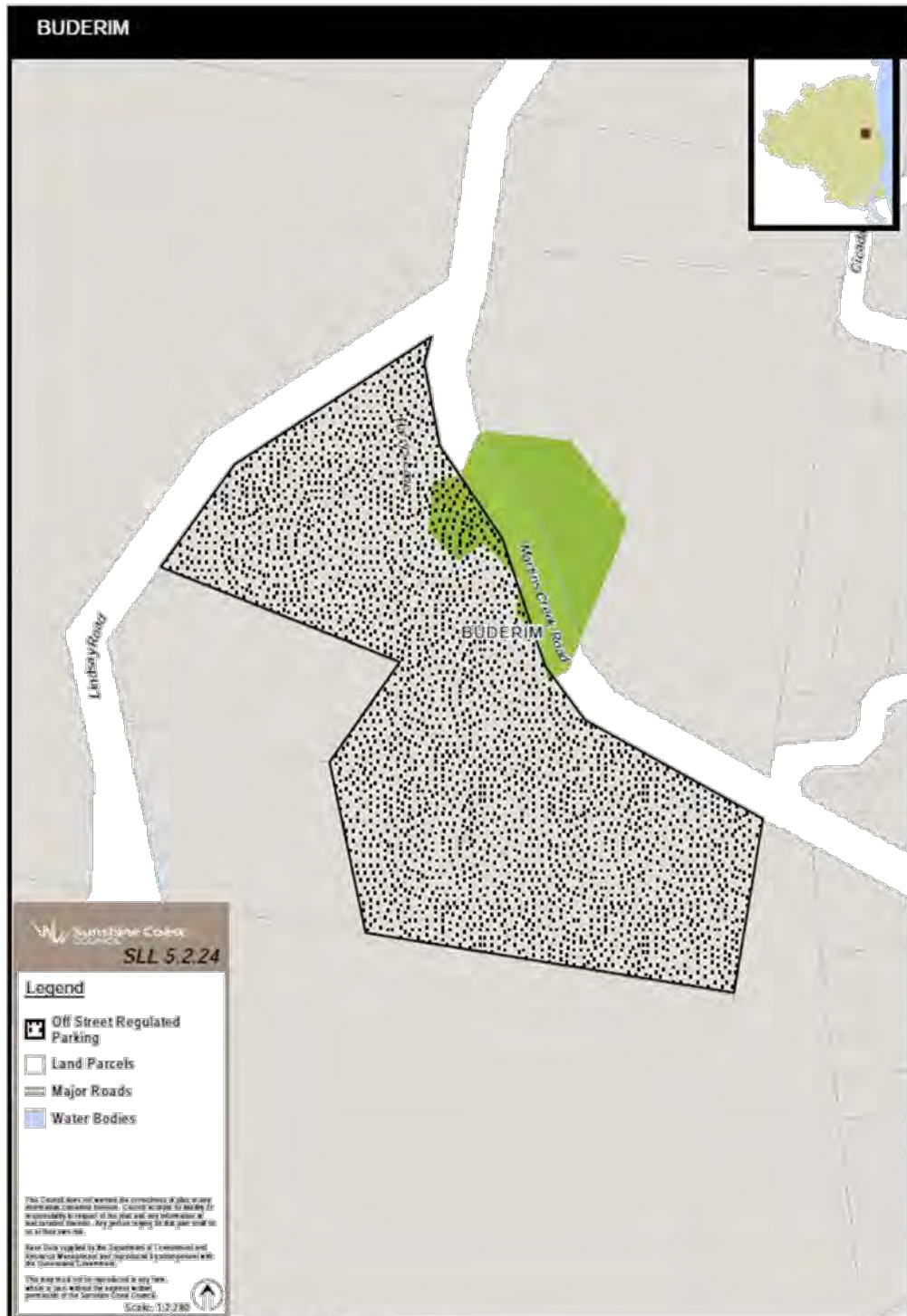


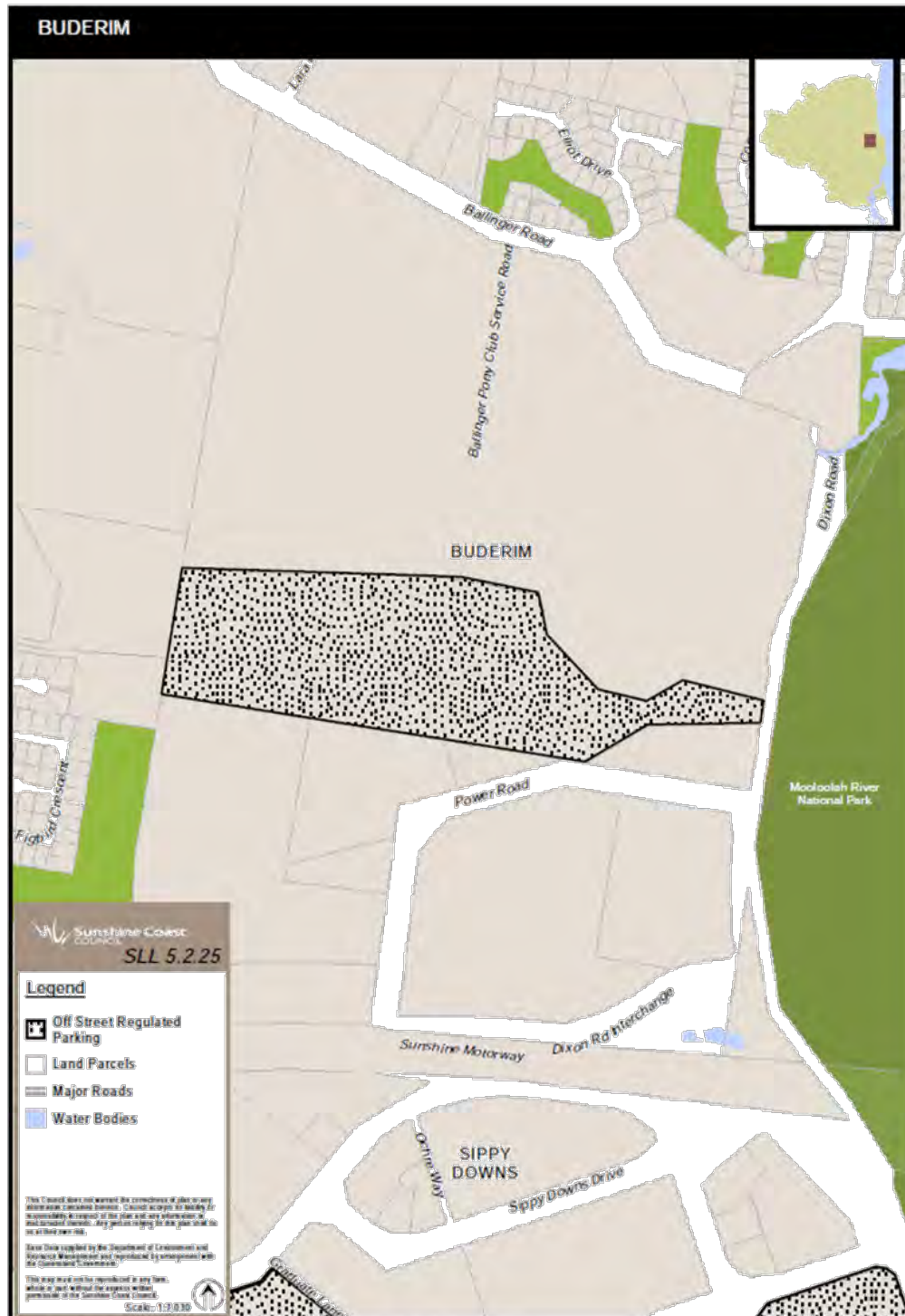






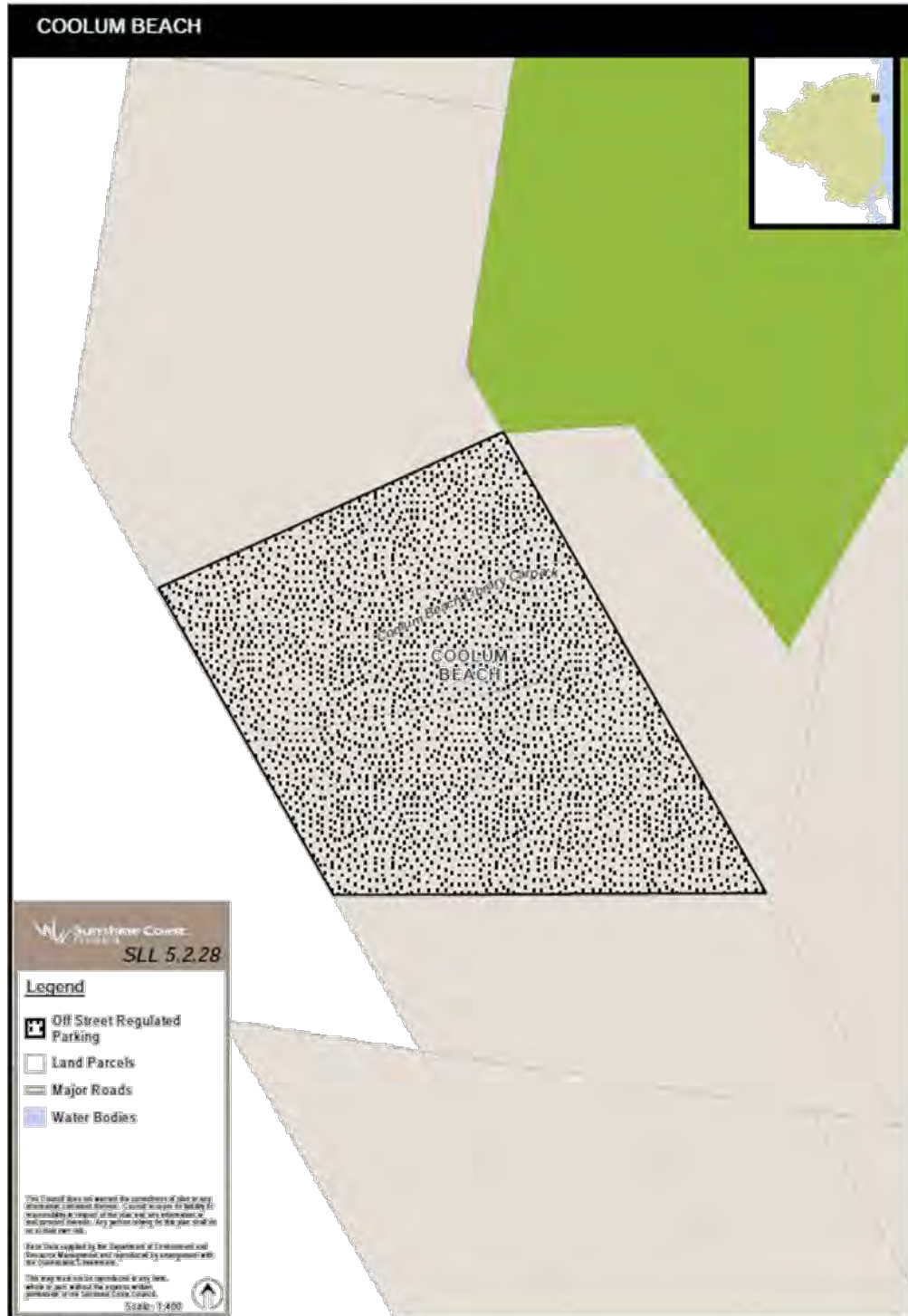


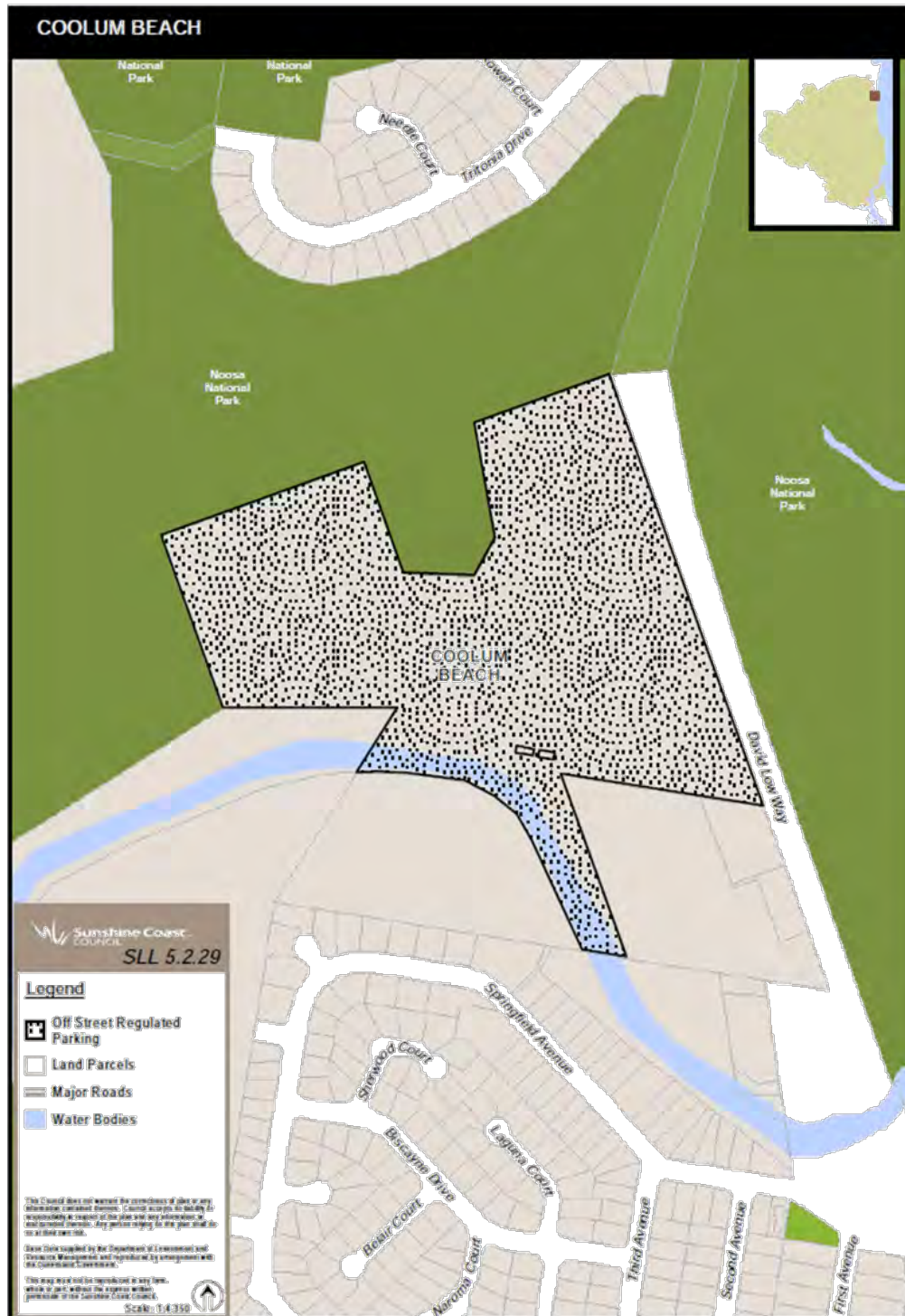


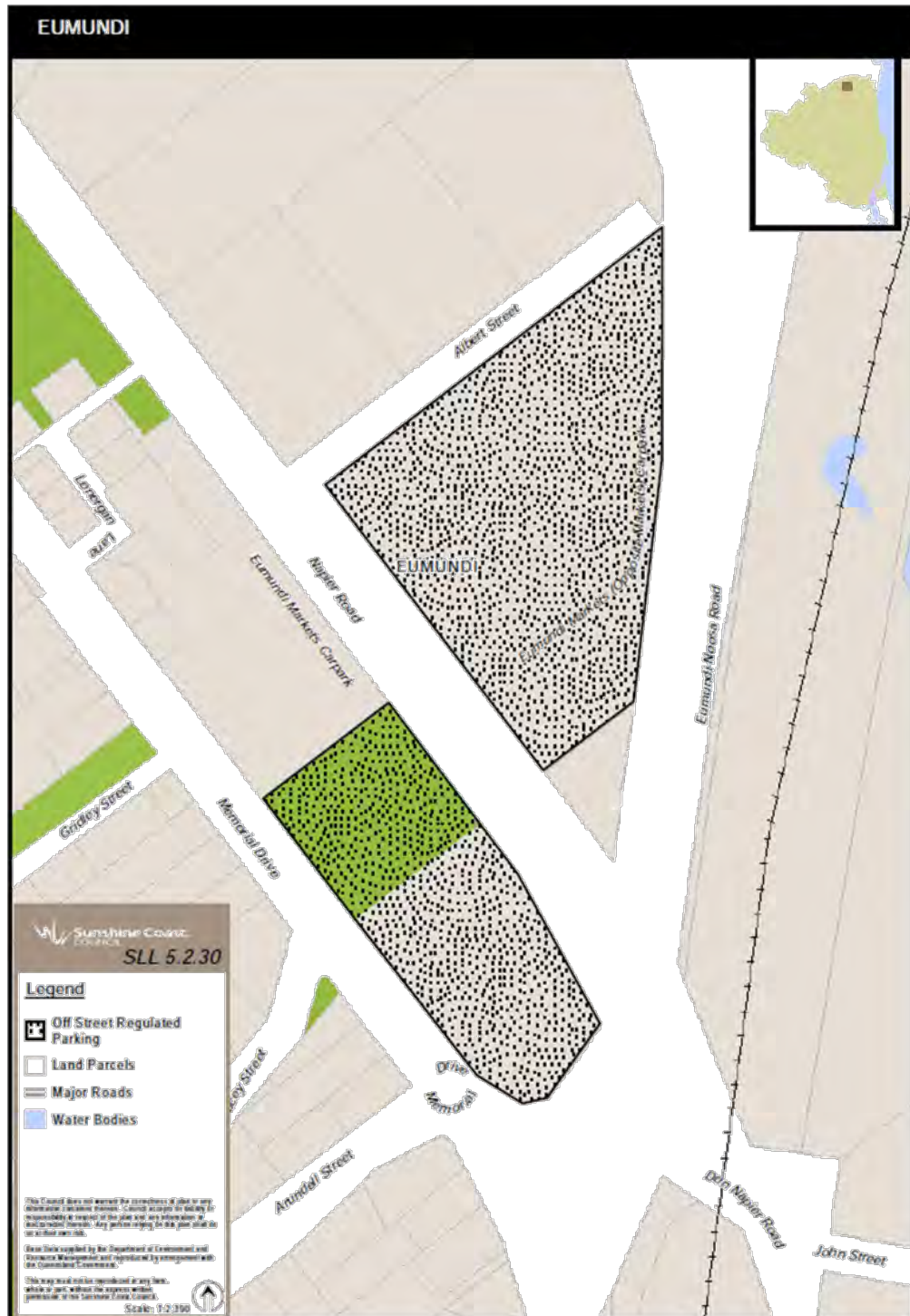


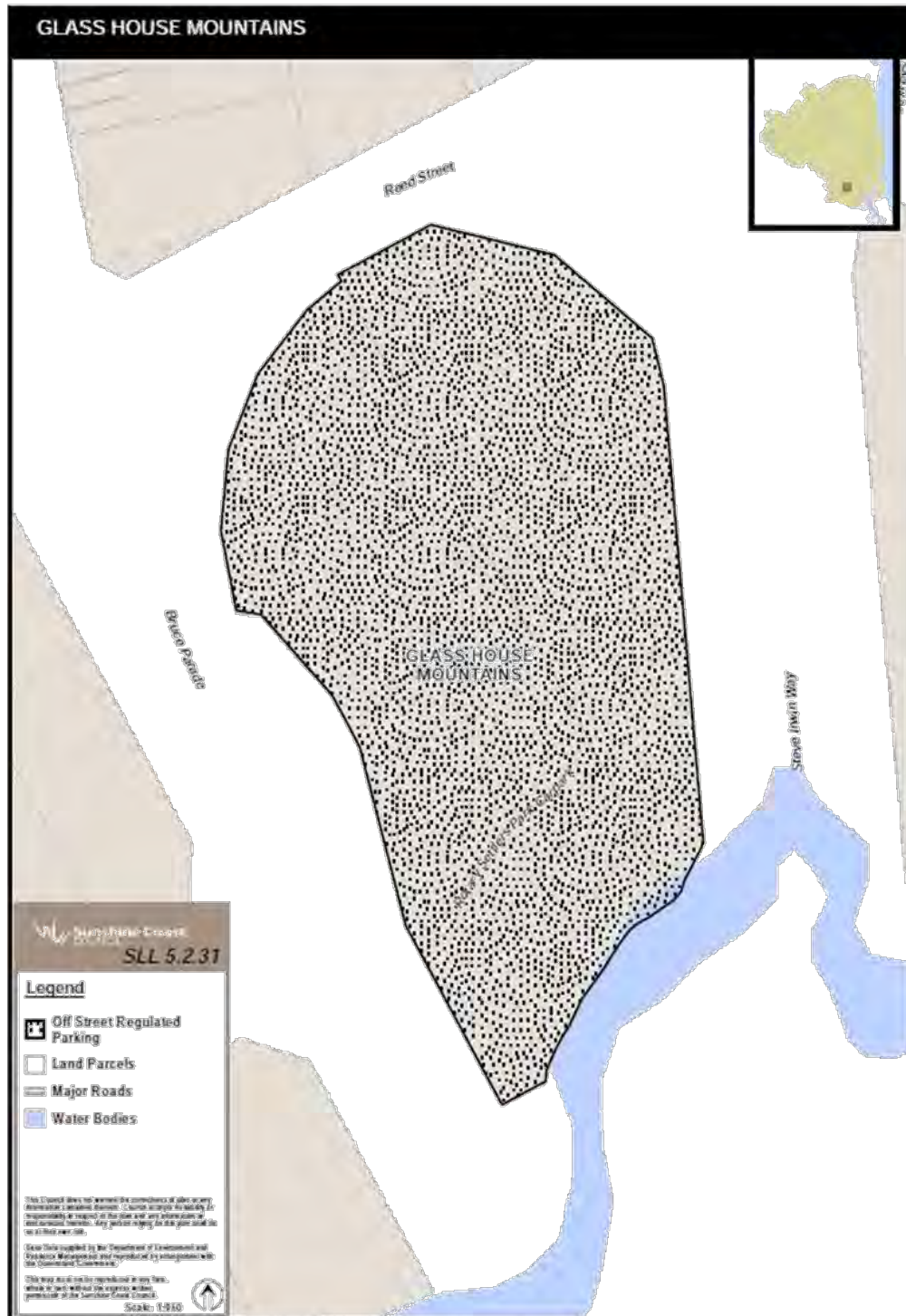








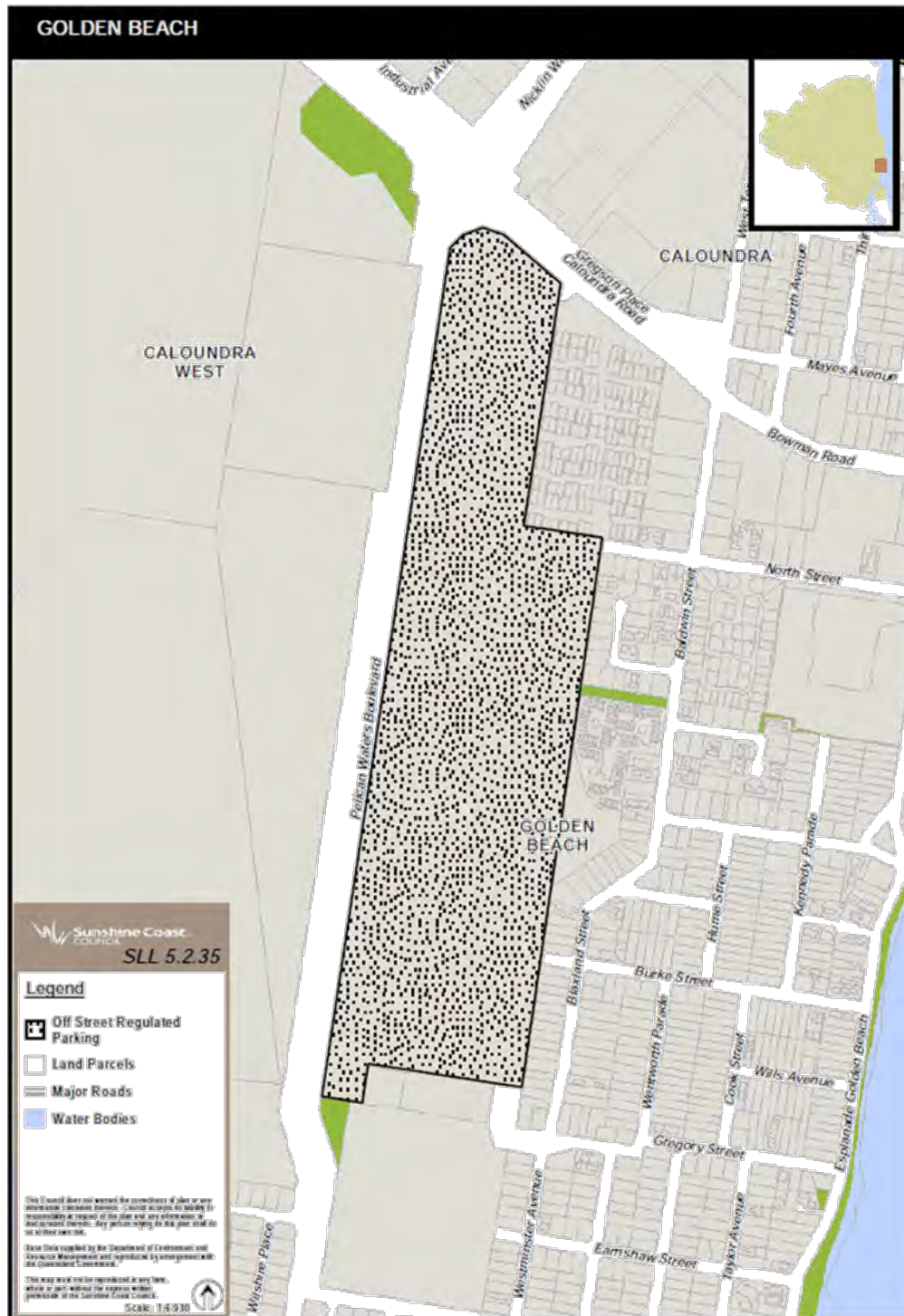


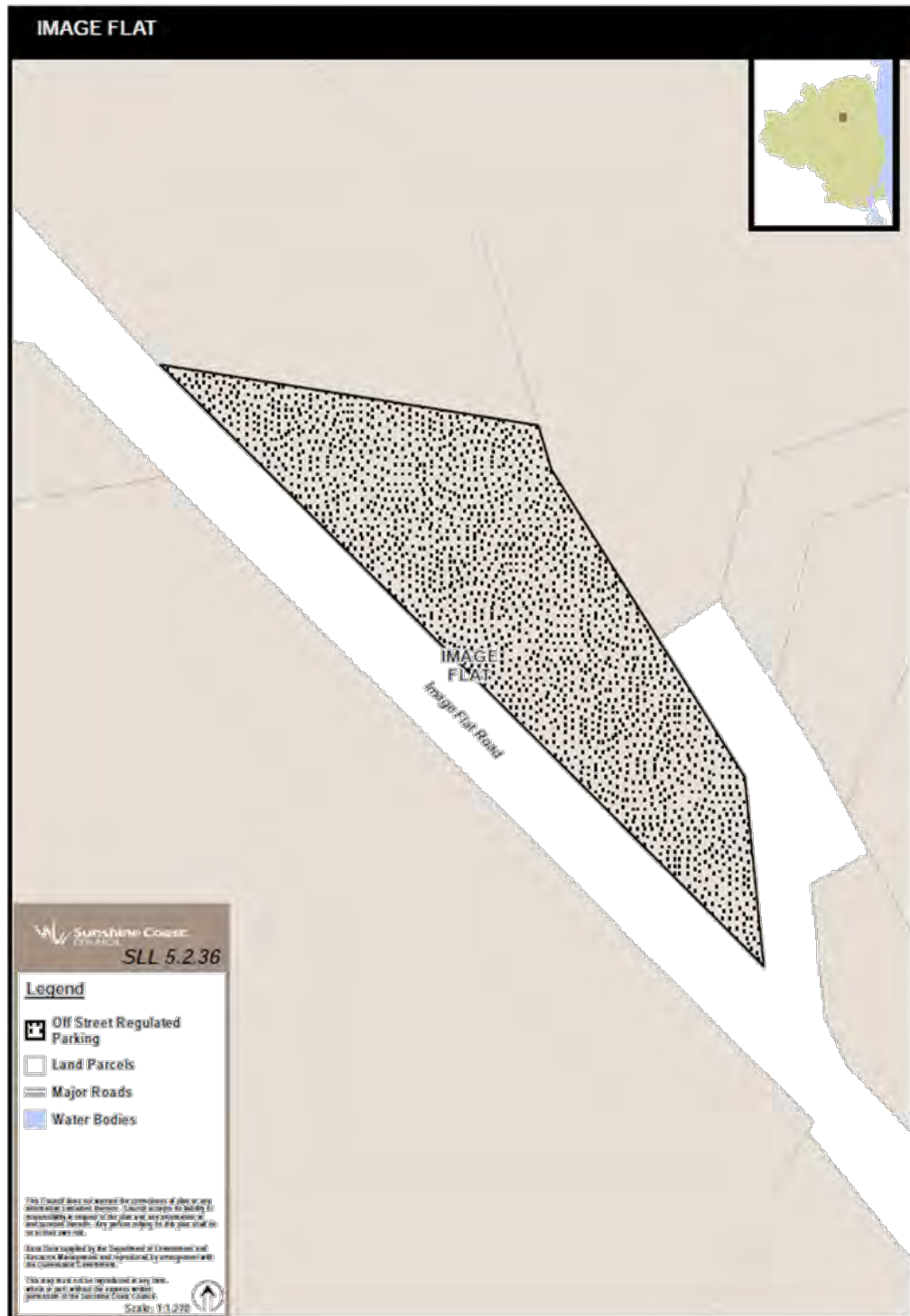






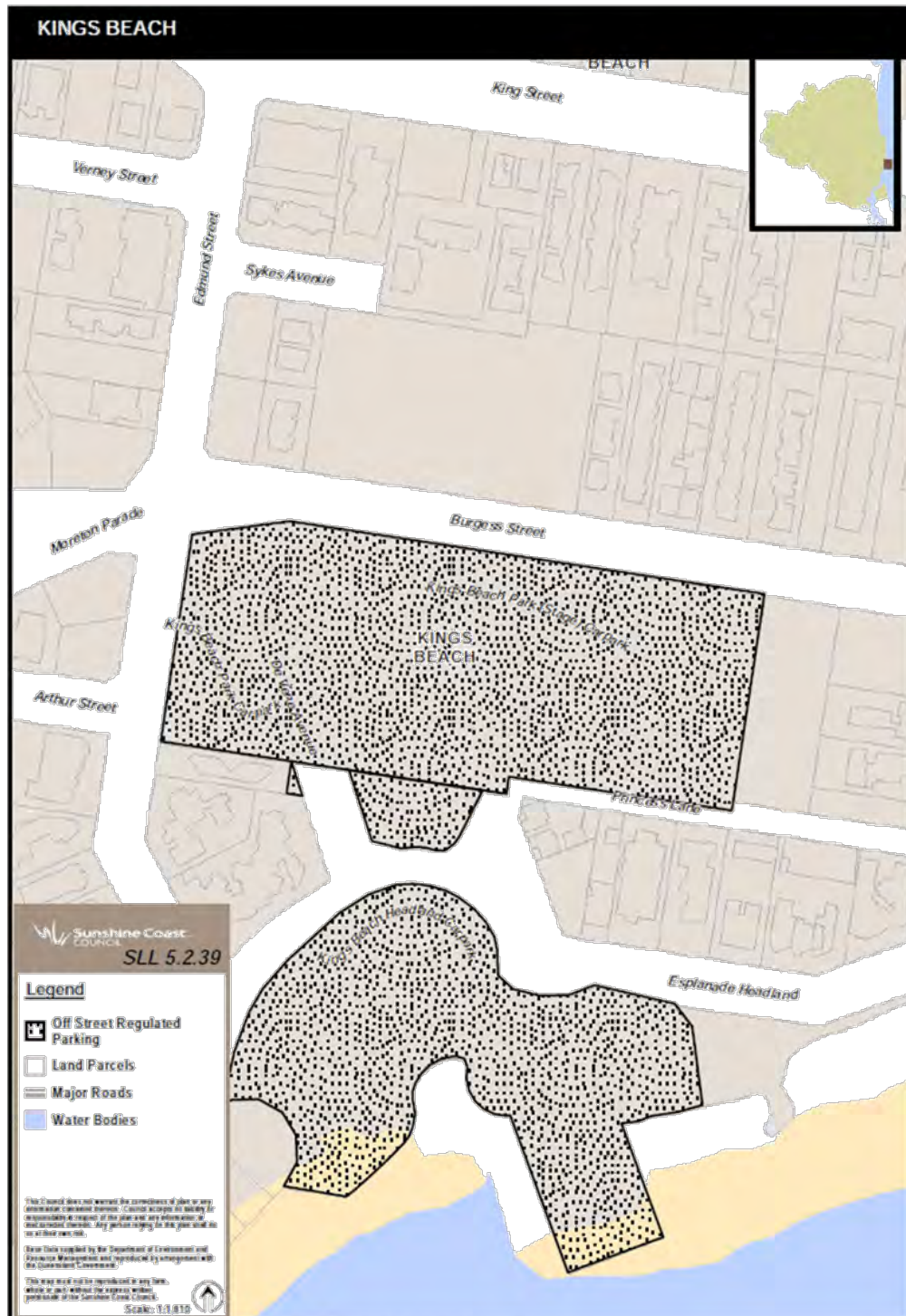


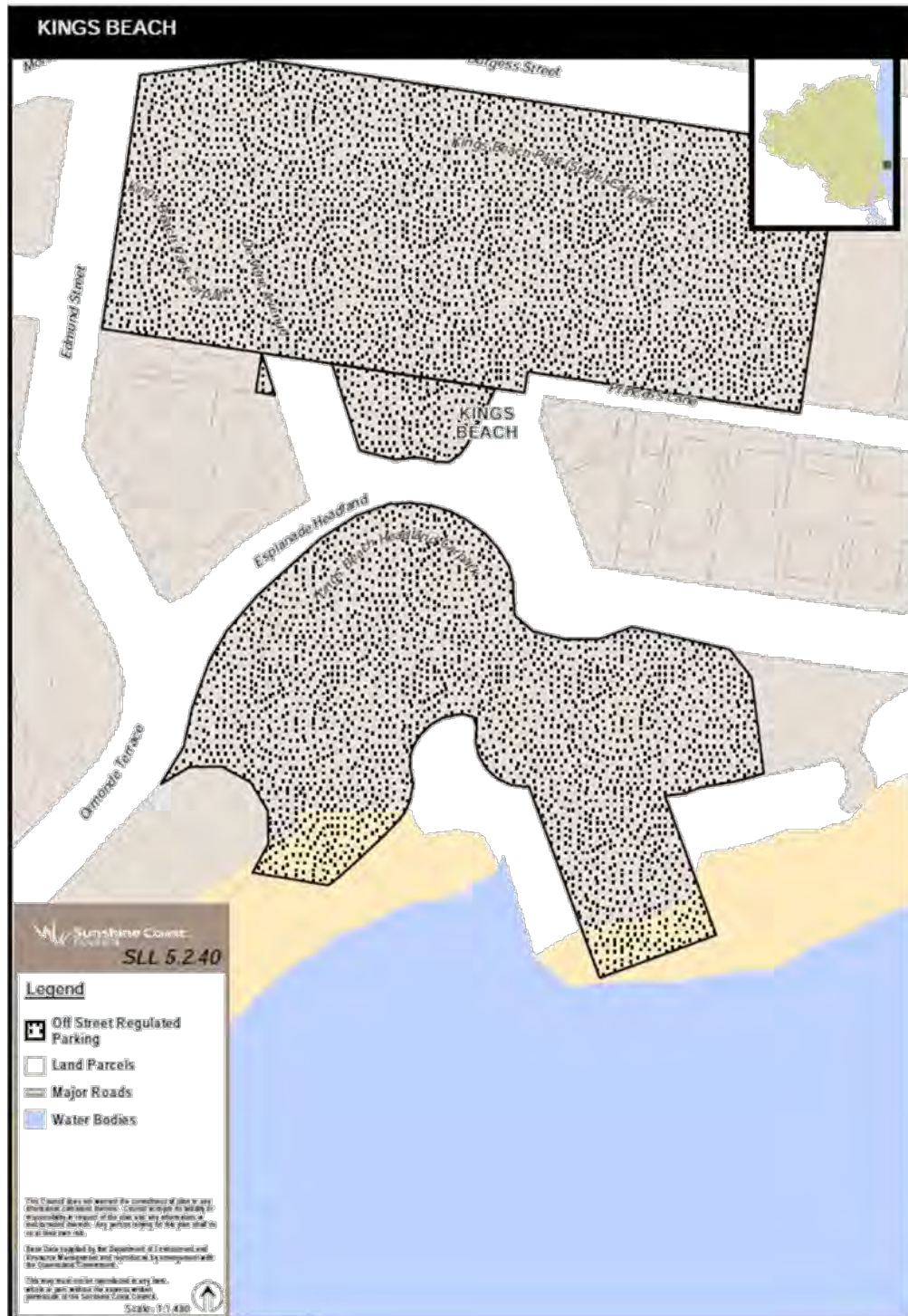




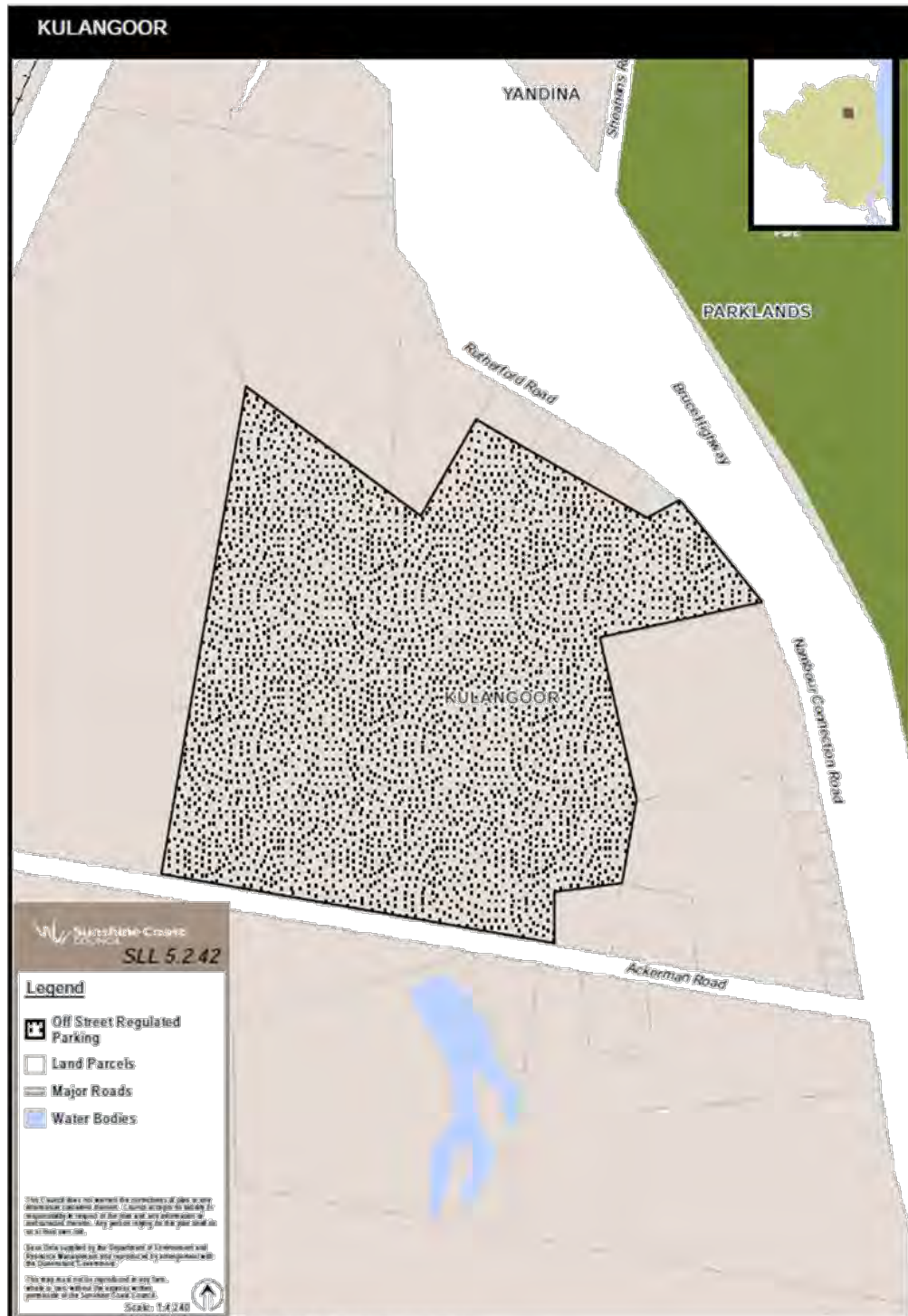










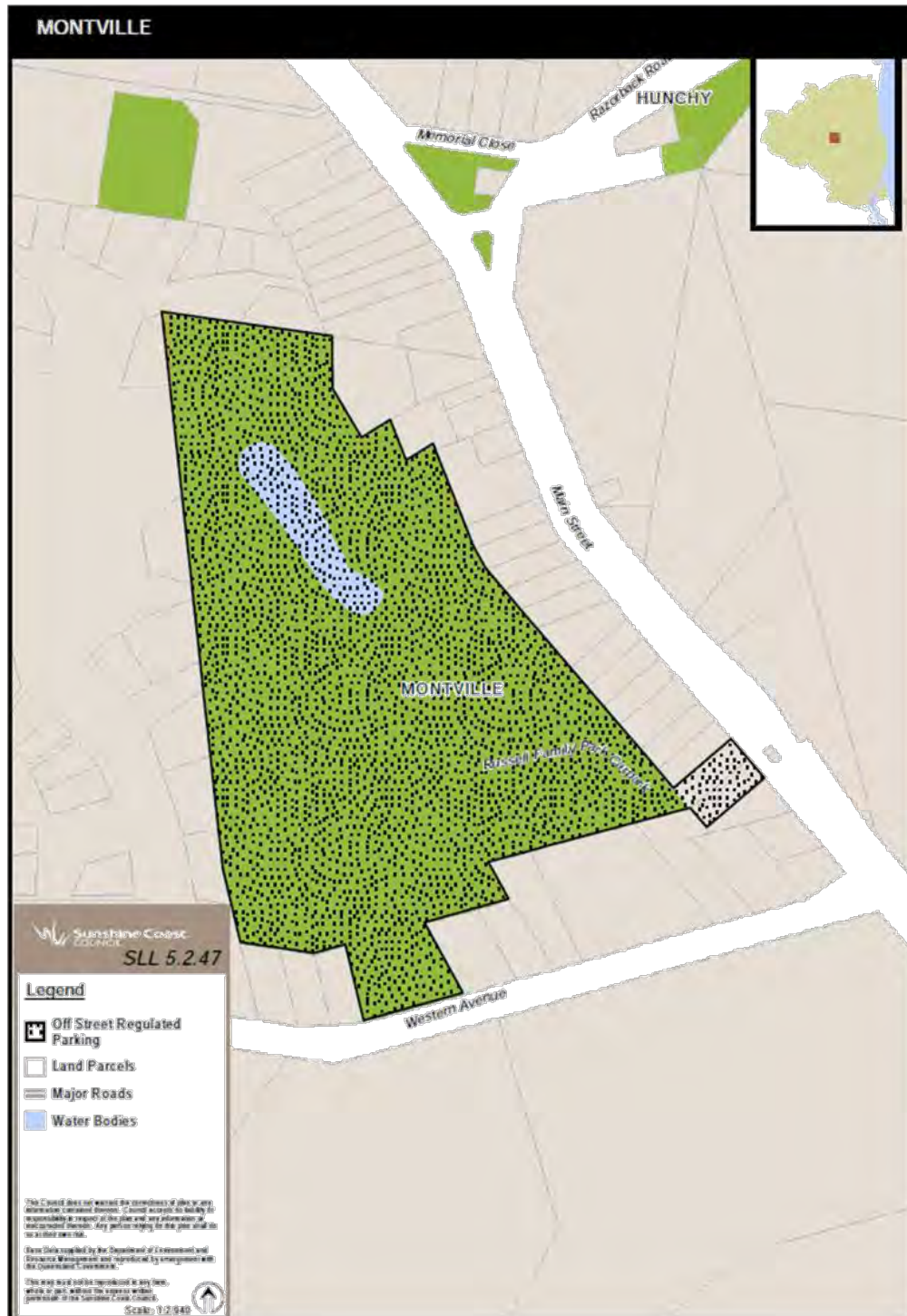


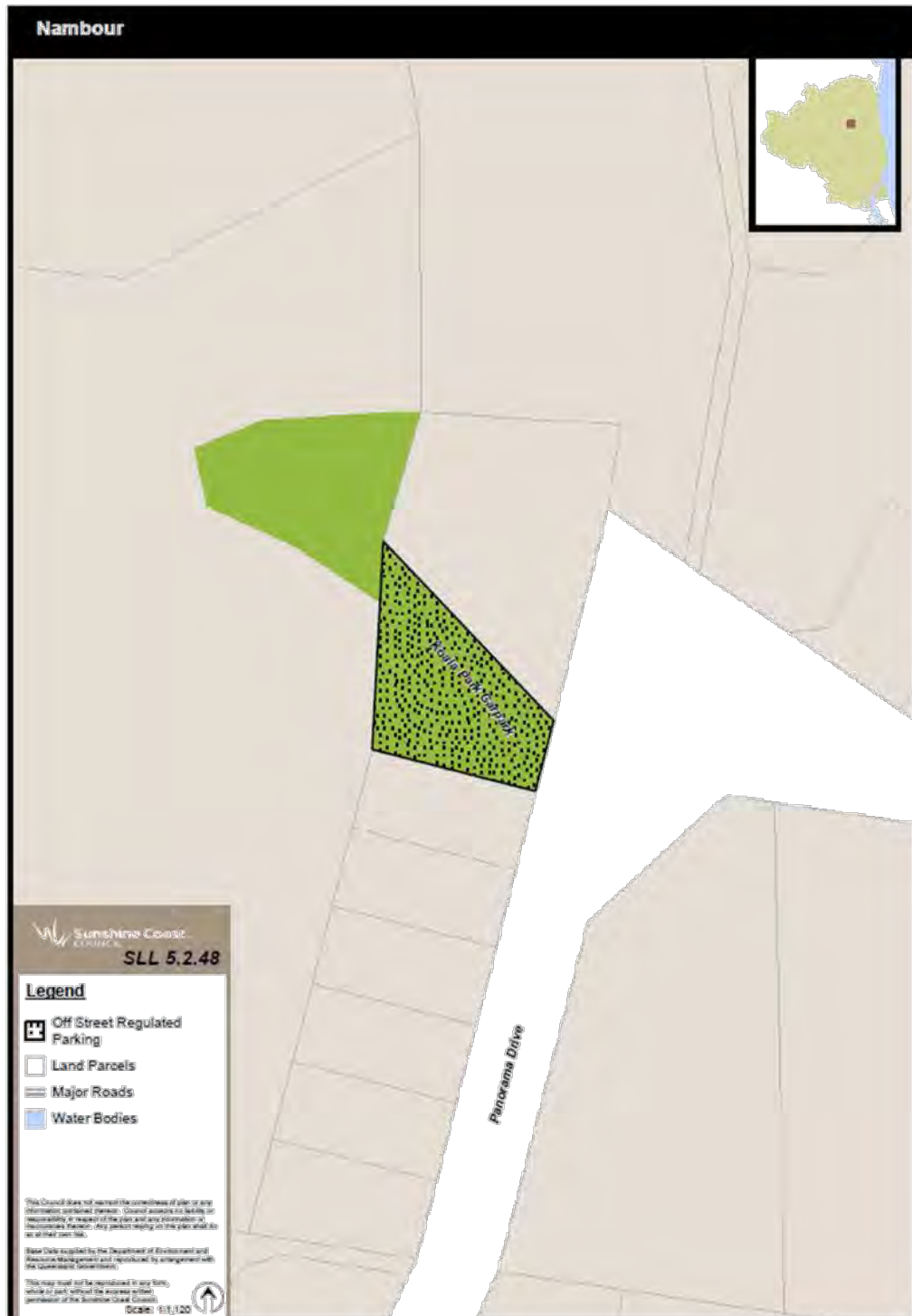






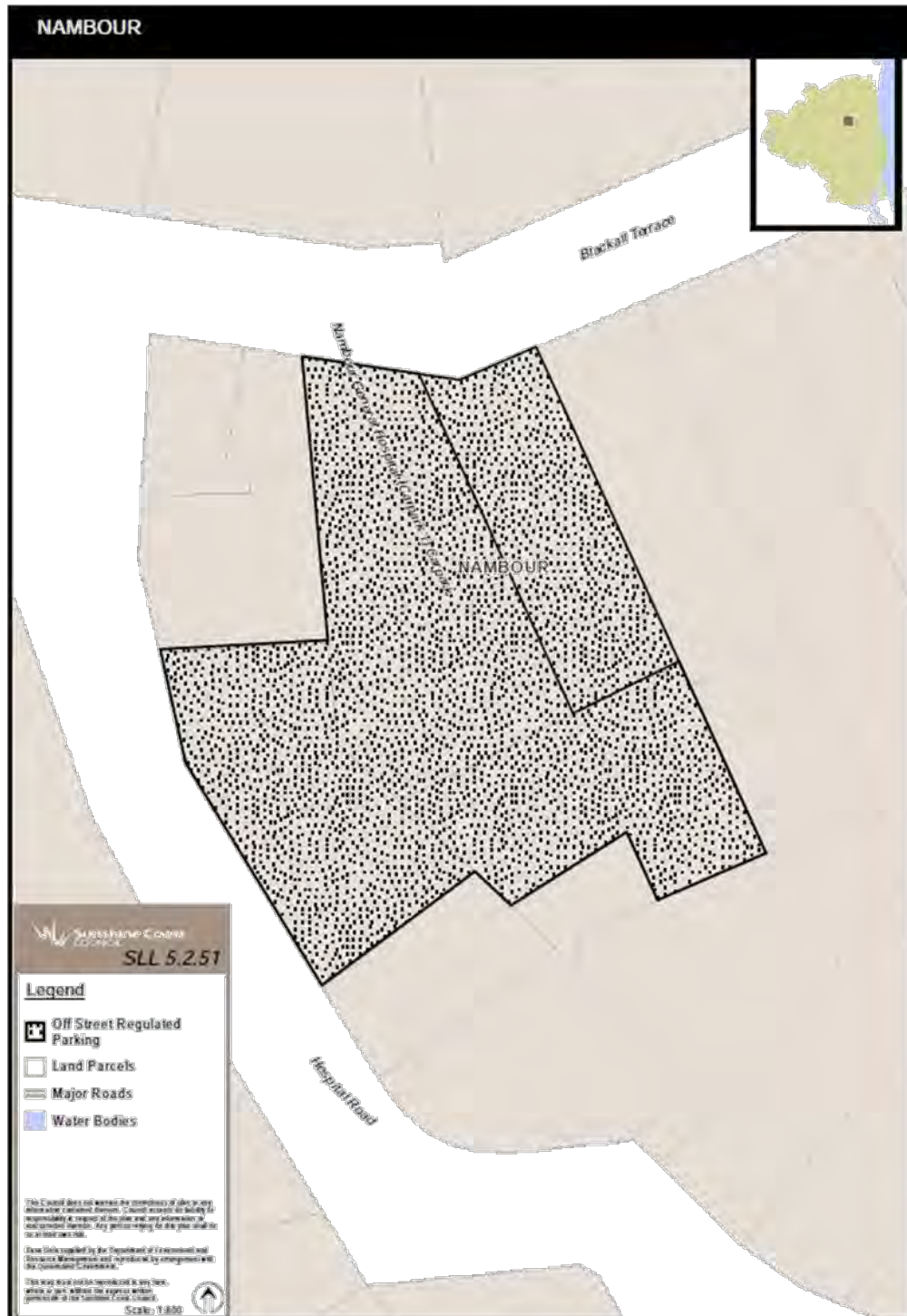




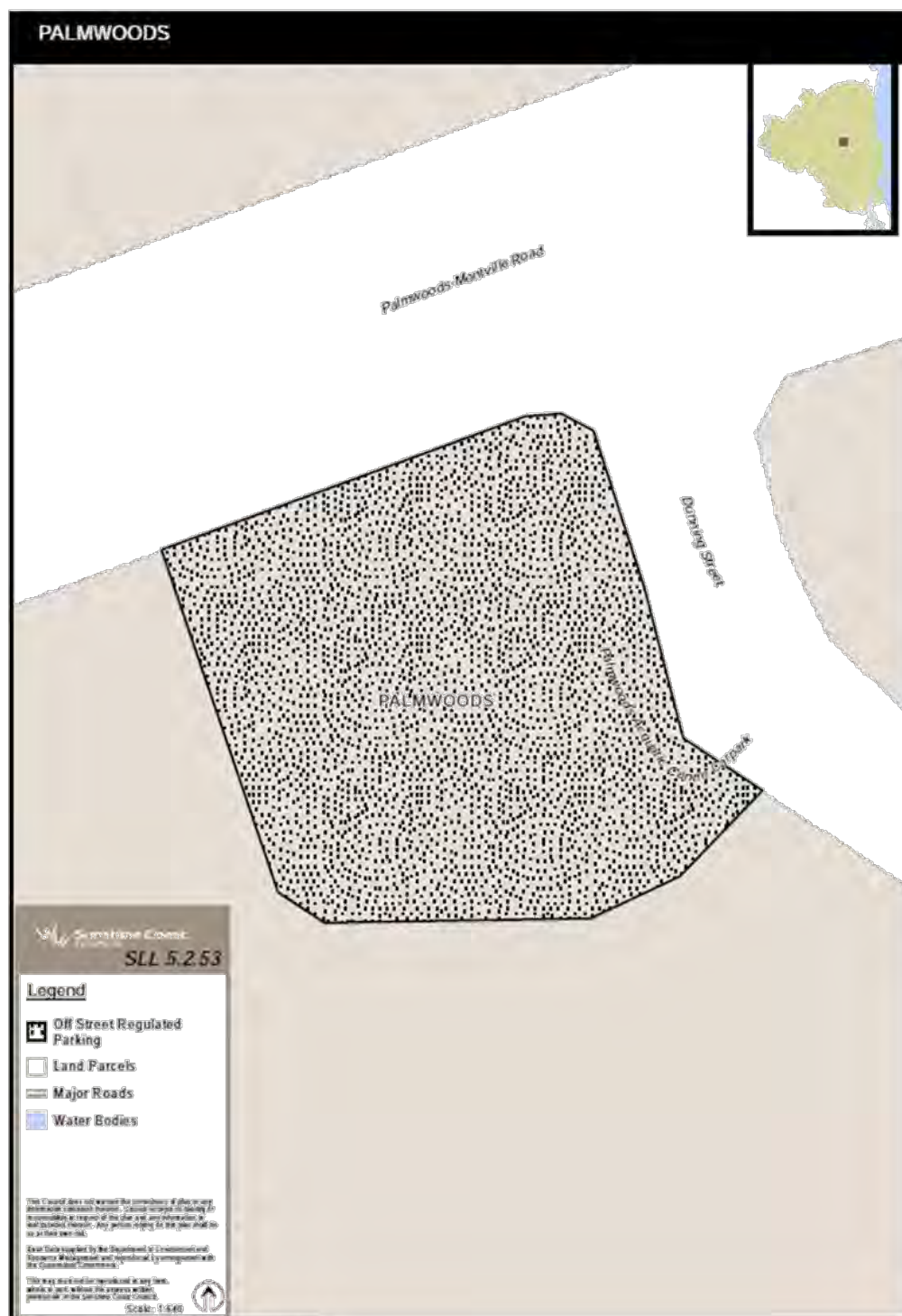


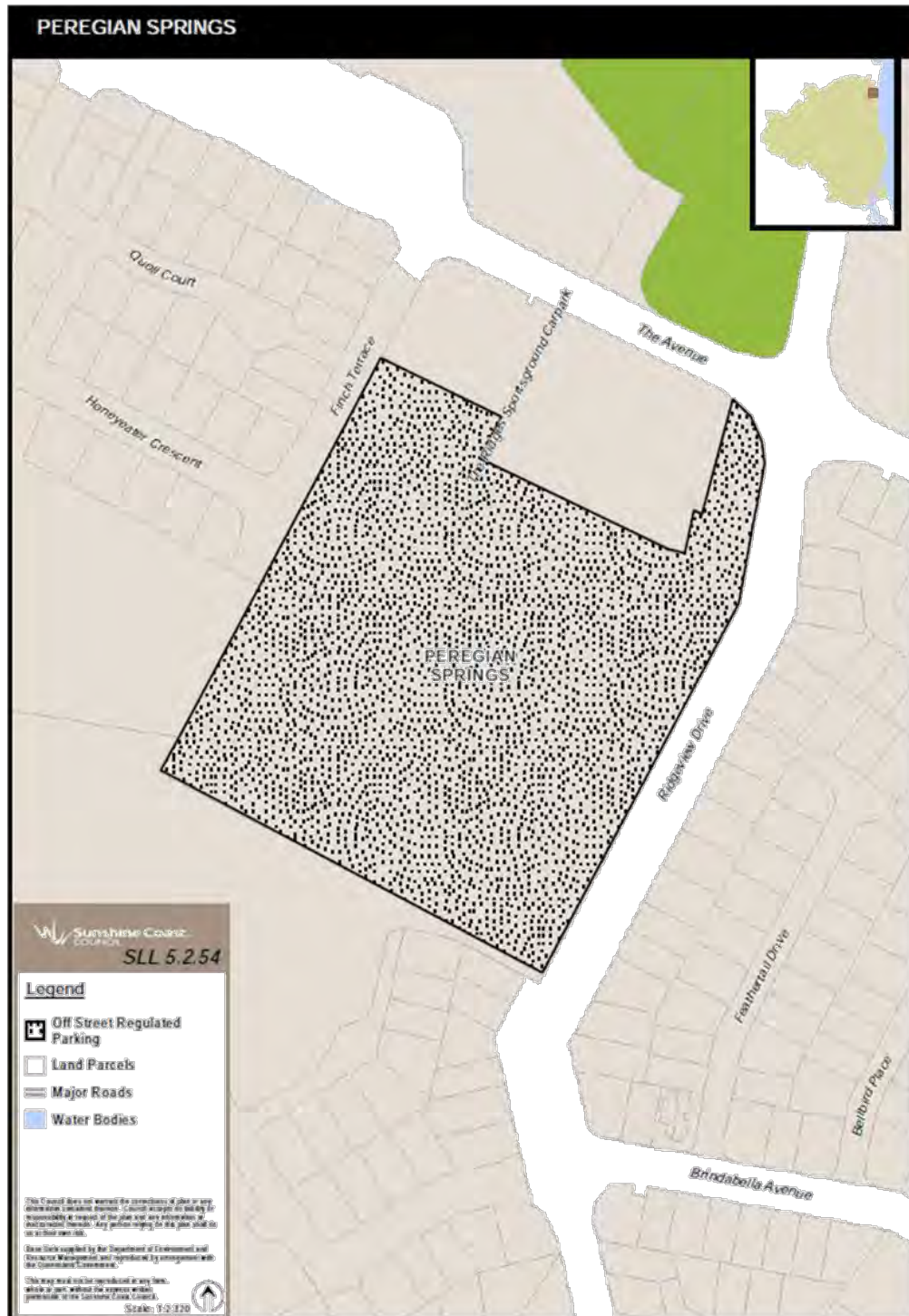


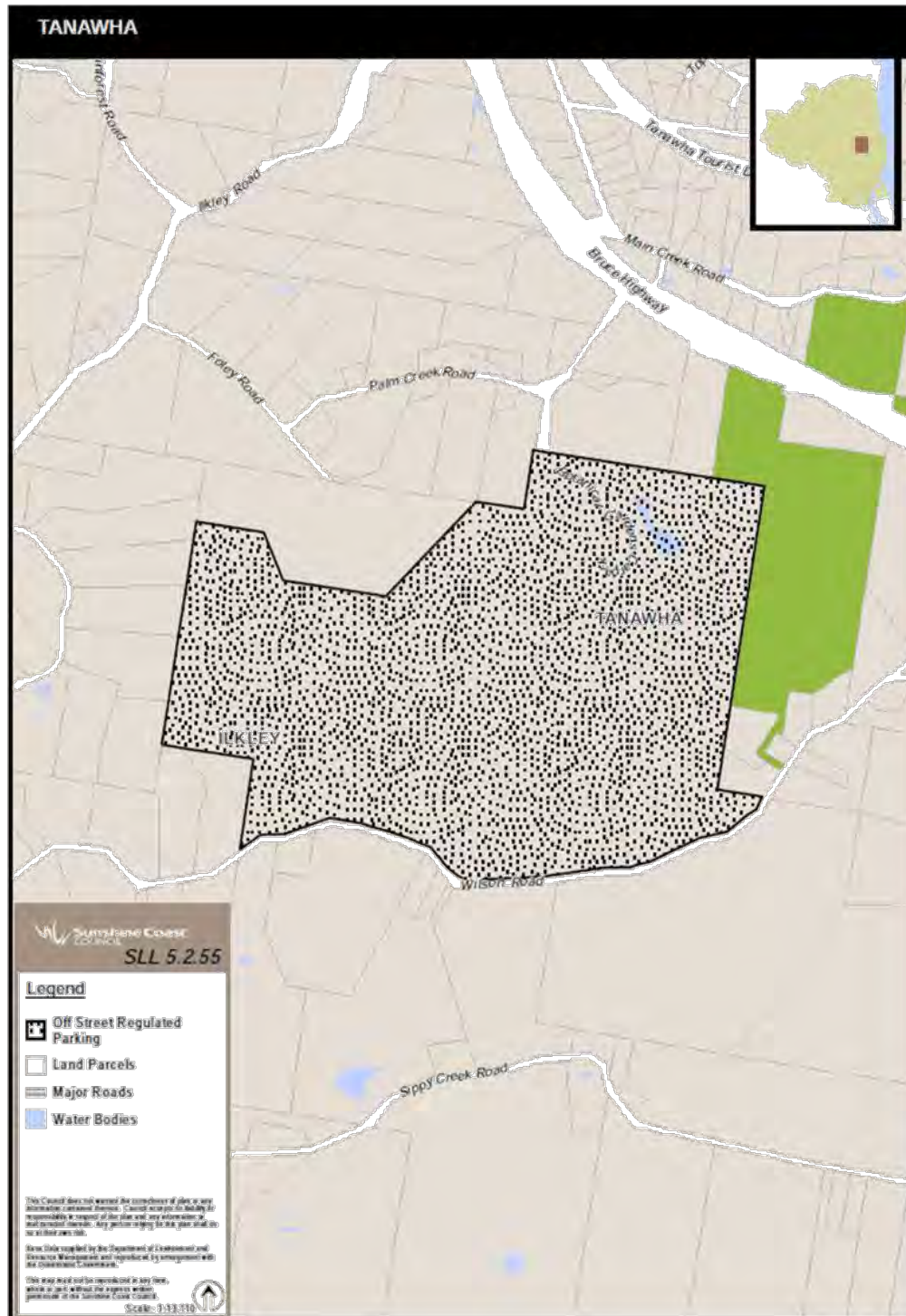


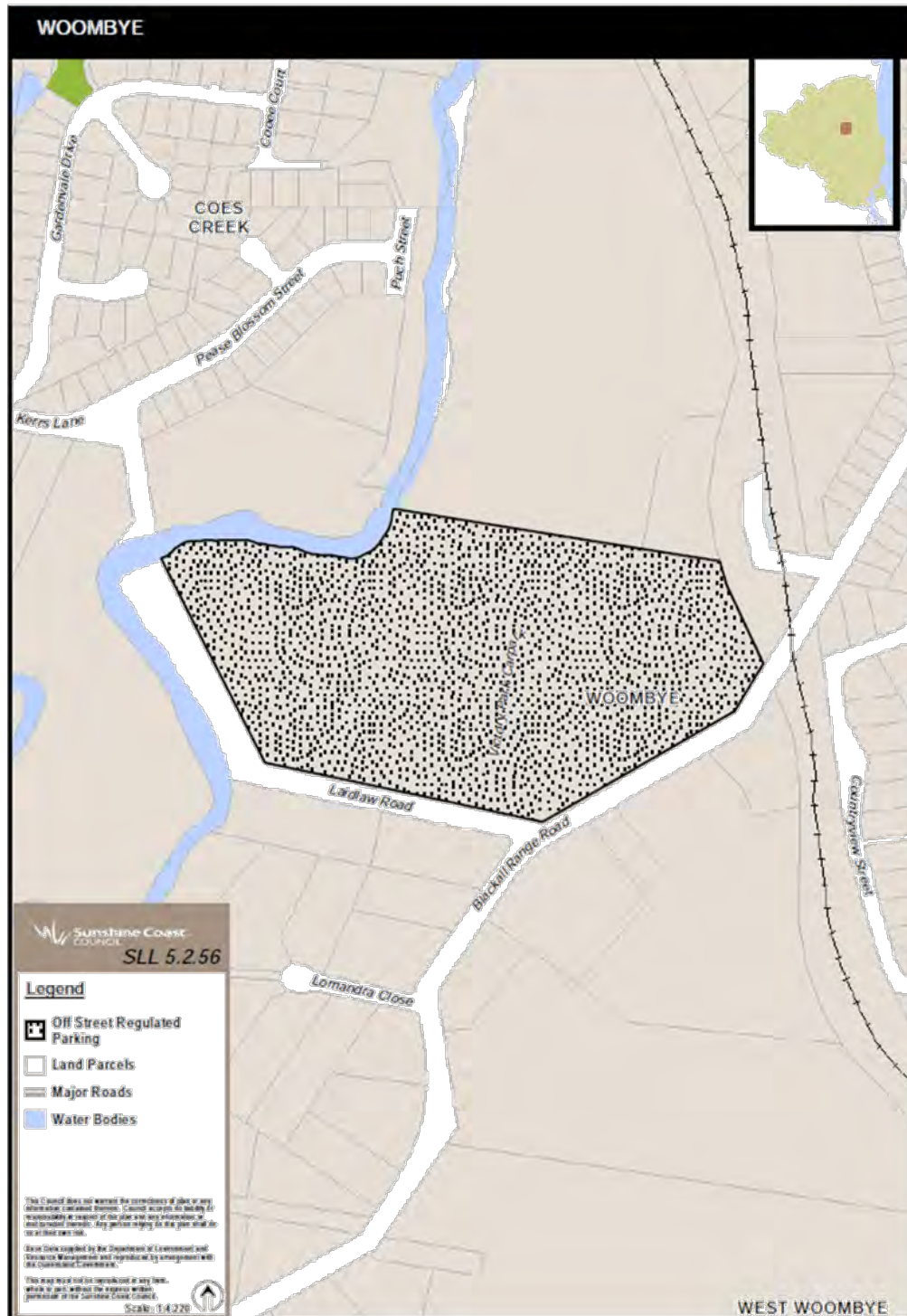










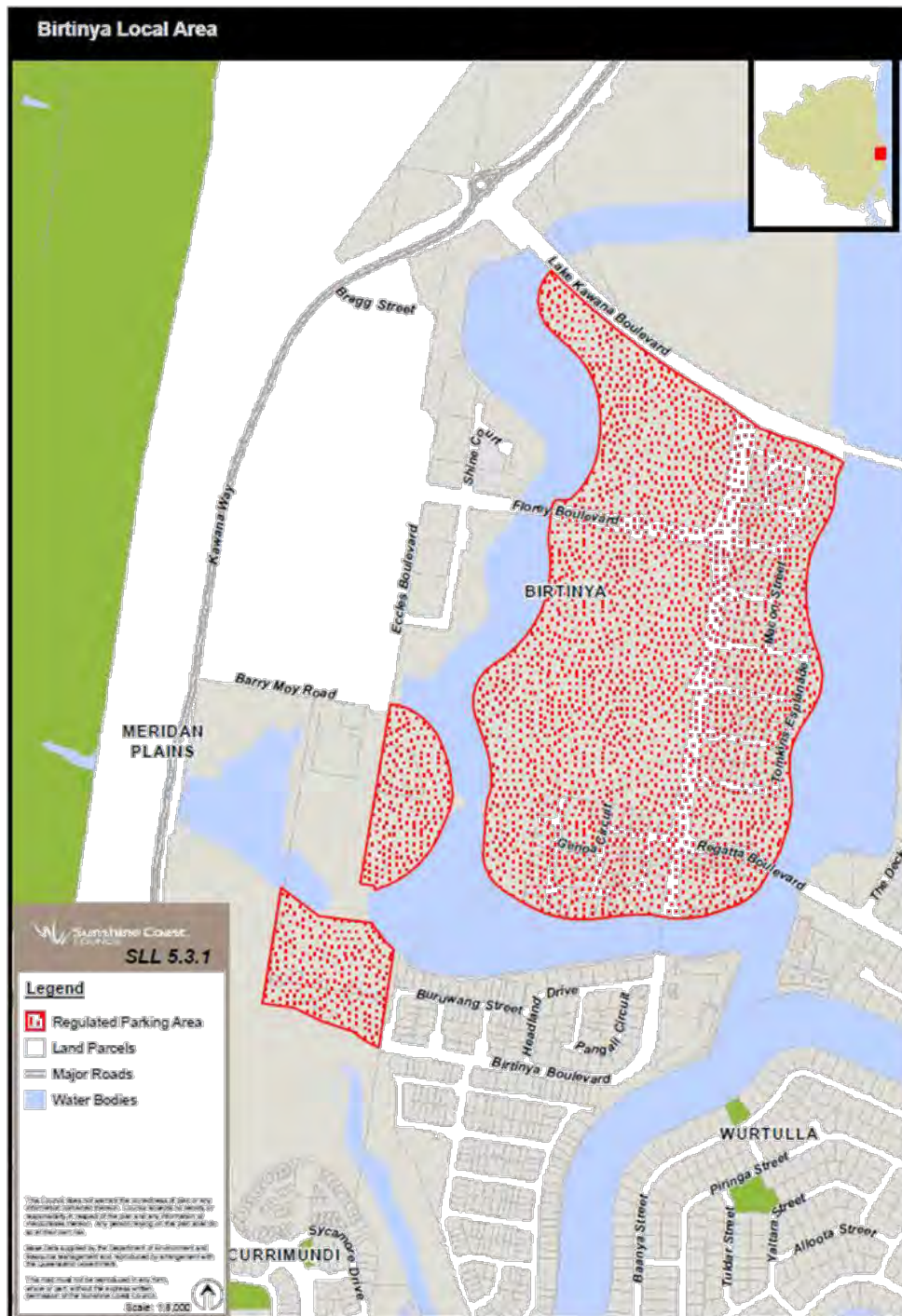




13 Amendment of sch 3 (Persons who may be issued with a parking permit)

- (1) Schedule 3, table, row 1 (relating to residential parking permit), column 2—
insert—
- 4 residents within the Sippy Downs Regulated Parking Area as delineated in
Map SLL5.3.2, including residents of multi-unit complexes
- (2) Schedule 3, from ‘Map SLL5.3.1 – Birtinya Regulated Parking Area’—
omit, insert—

Map SLL5.3.1 – Birtinya Regulated Parking Area



Map SLL5.3.2 – Sippy Downs Regulated Parking Area

