

Project number: K6282

Brisbane Road Upgrade

Stage 4 Mooloolaba Transport Corridor Upgrade

May update



Stage 4 Early works - service relocations, demolition and fence construction



Late April 2024 to August 2024

Monday to Friday, 6am to 6pm (day works)

All works are subject to weather and construction material/equipment availability.

Brisbane Road - from Mayes Canal Bridge to Bindaree Crescent, Mooloolaba



Intermittent changes to traffic conditions

Construction overview

Stage 4 of the Brisbane Road Upgrade project includes upgrading Brisbane Road from Kyamba Court to Tuckers Creek Bridge to four traffic lanes, a new signalised intersection at Bindaree Crescent/Brisbane Road/Woomba Place, and central median changes on both sides of the bridge.

To minimise construction impacts of Stage 4 to our community, including local businesses, works will take place in two stages.

Stage 1: Early works. Late April to August 2024. *Between Mayes Canal Bridge and Bindaree Crescent on the eastern side of Brisbane Road.*

Works will include site establishment, some service relocations, the demolition of Council owned buildings and acoustic fence construction.

Stage 2. Roadworks and landscaping. Timing to be determined. *Between Mayes Canal*

Bridge and Bindaree Crescent, and Tuckers Creek Bridge and Woomba Place.

Works will include the widening of Brisbane Road to four lanes, construction of a new signalised intersection at Bindaree Crescent/Brisbane Road/Woomba Place, new footpaths and landscaping works.

We will continue to keep our community informed.

Stage 1. Early works construction schedule

Friday 26 April to Tuesday 7 May:

Construction site establishment, service locations and safety fence erection.

Tuesday 7 May to late June:

Demolition of Council owned buildings. Demolition materials will be appropriately sorted, recycled or disposed of by the construction contractor.

All information contained in this communication is accurate at the time of distribution however works and dates are subject to change due to circumstances outside of Sunshine Coast Council's control.

Late June to August:

Acoustic fence construction. Construction compound removed. Safety fencing removed. Construction compound area revegetated via hydro mulch process – a mixture of grass seed, fertiliser and water sprayed over the area.

What to expect during works

Council has appointed Evans Built Pty Ltd to undertake these early works. The Evans Built team will make every effort to minimise impacts to our community.

During these works large machinery will be in operation and intermittent medium-high level noise can be expected. Dust suppression methods will be used during demolition works.

Temporary changes to traffic conditions

The majority of early works will take place away from the live traffic lanes of Brisbane Road. Traffic disruption is expected to be minimal.

Traffic control will be used when required to ensure the safety of our community and construction workers, for example, when large vehicles are entering or leaving the construction site.

Alternative pedestrian and cyclist pathways may be in place at times.

On street car parking will remain available on the western side of Brisbane Road (in front of local businesses).

Please continue to support local businesses during Stage 4 early works.

Register for project updates and/or contact the project team

To register for construction updates, email your details to mtcu@sunshinecoast.qld.gov.au

For further information, you can contact the project team on 1800 531 597 (during office hours, Monday to Friday 8.30am – 5pm) or email mtcu@sunshinecoast.qld.gov.au

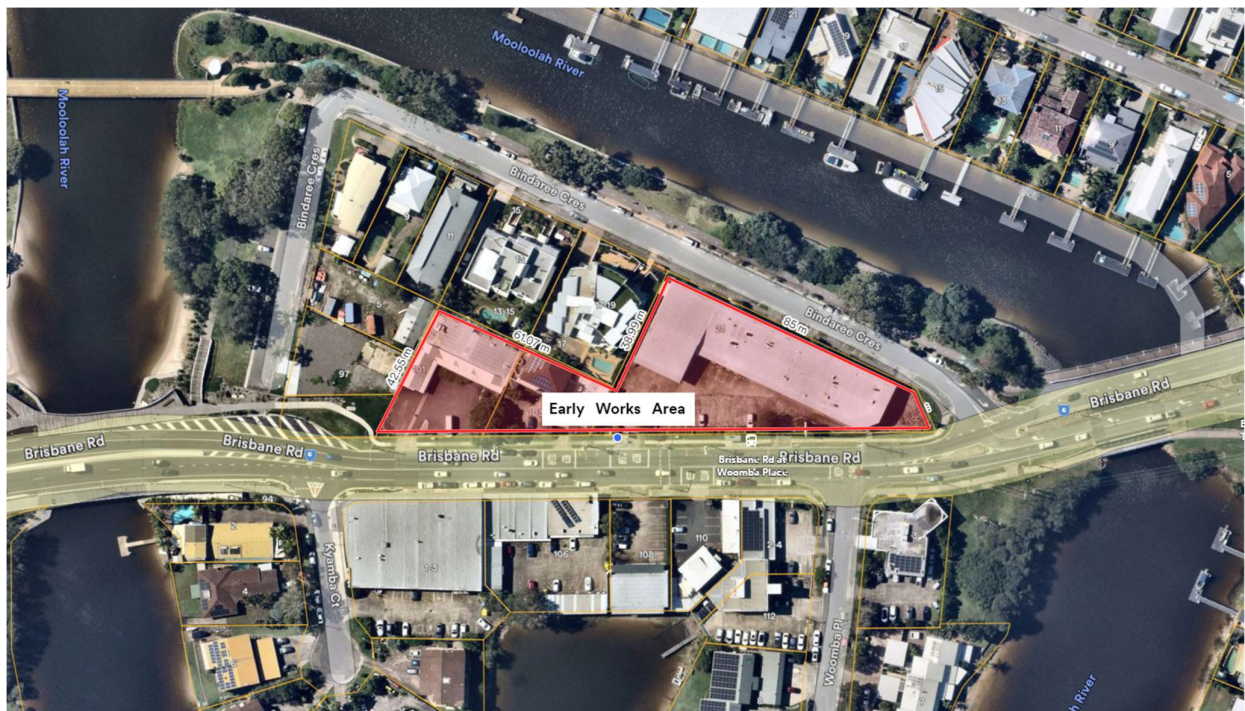


Figure 1. Stage 4 Early works area - Eastern side of Brisbane Road, Mooloolaba