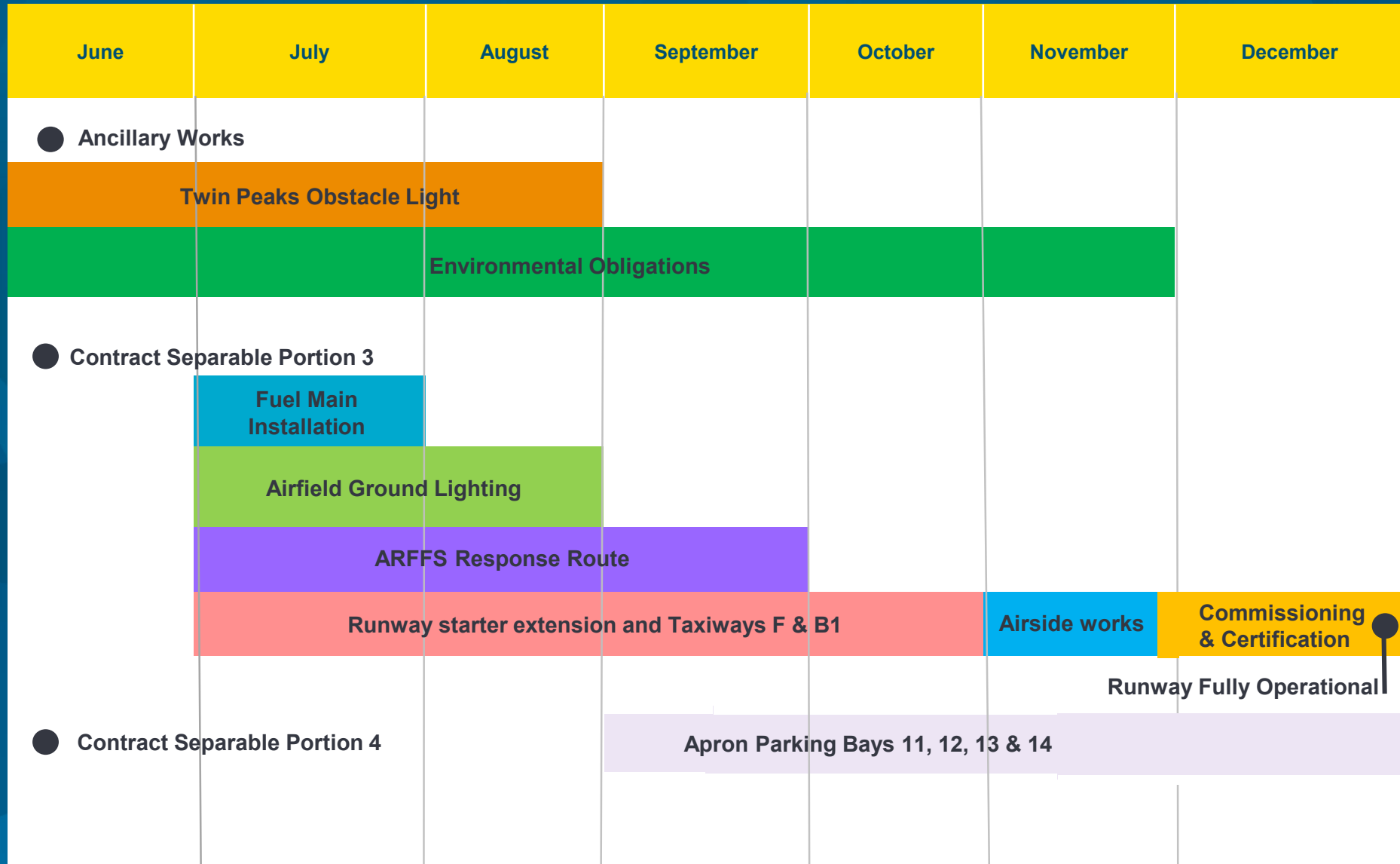


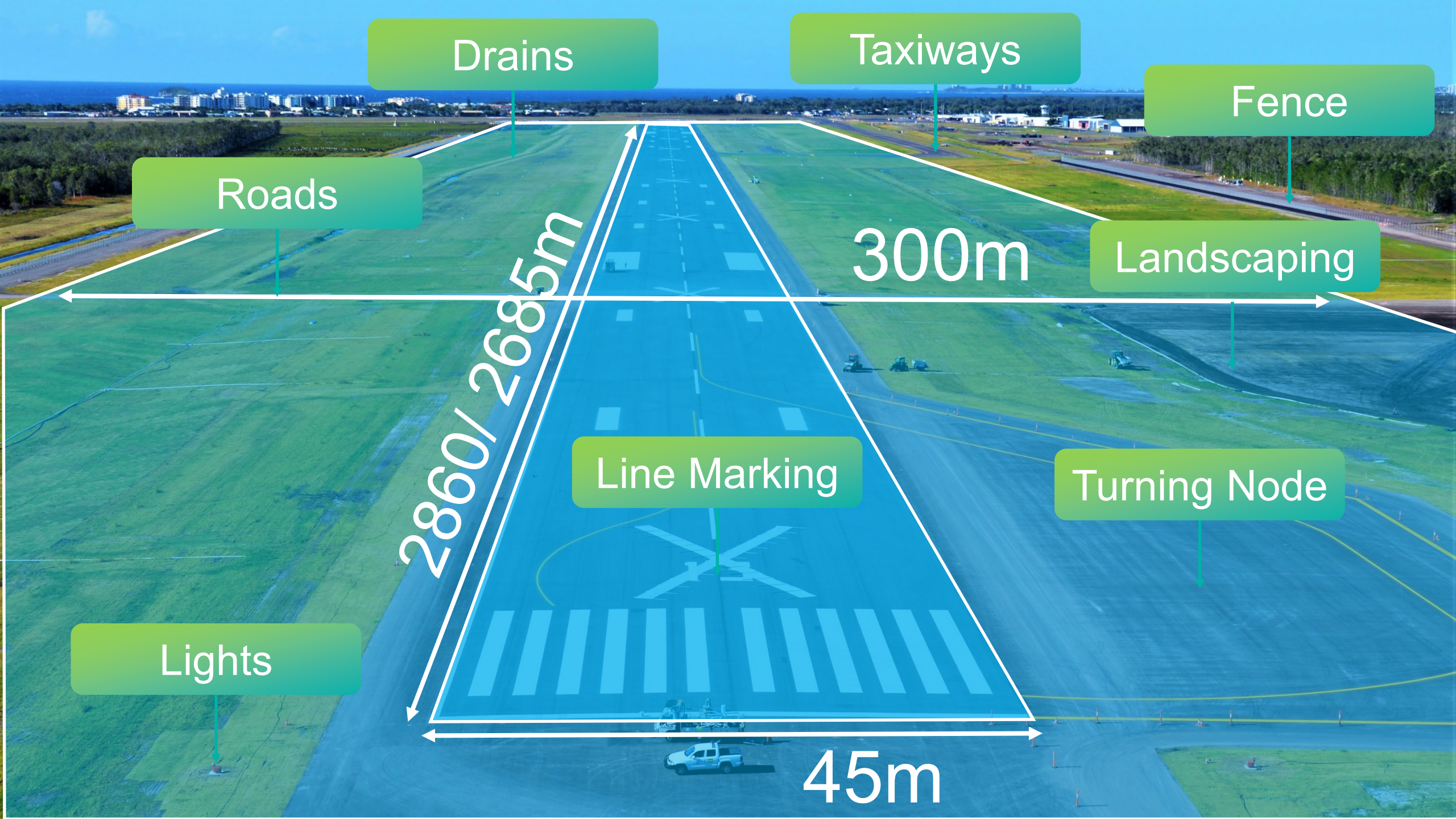


Sunshine Coast Airport Expansion Project - Update

Period 1 July 2020 – 31 December 2020

Program Schedule - Milestones





Drains

Taxiways

Fence

Roads

Landscaping

Line Marking

Turning Node

Lights

2860/2685m

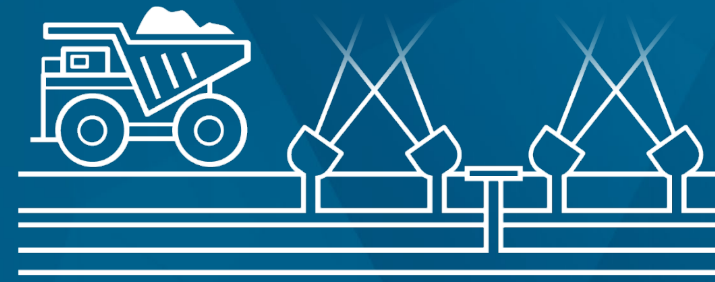
300m

45m

30 November 2020



Council's Largest Infrastructure Project



Total % Completed

General Fill
150,000 m3

Dredged Sand
1,330,000 m3

Fine Crushed Rock
341,000 tonnes

Road Base
105,000 tonnes

Asphalt
69,287 tonnes

Rigid Concrete Pavement
16,000 tonnes

Lean Mix Concrete
15,000 tonnes

Prime Coat
550,000 litres

Seal Coat
90,000 litres

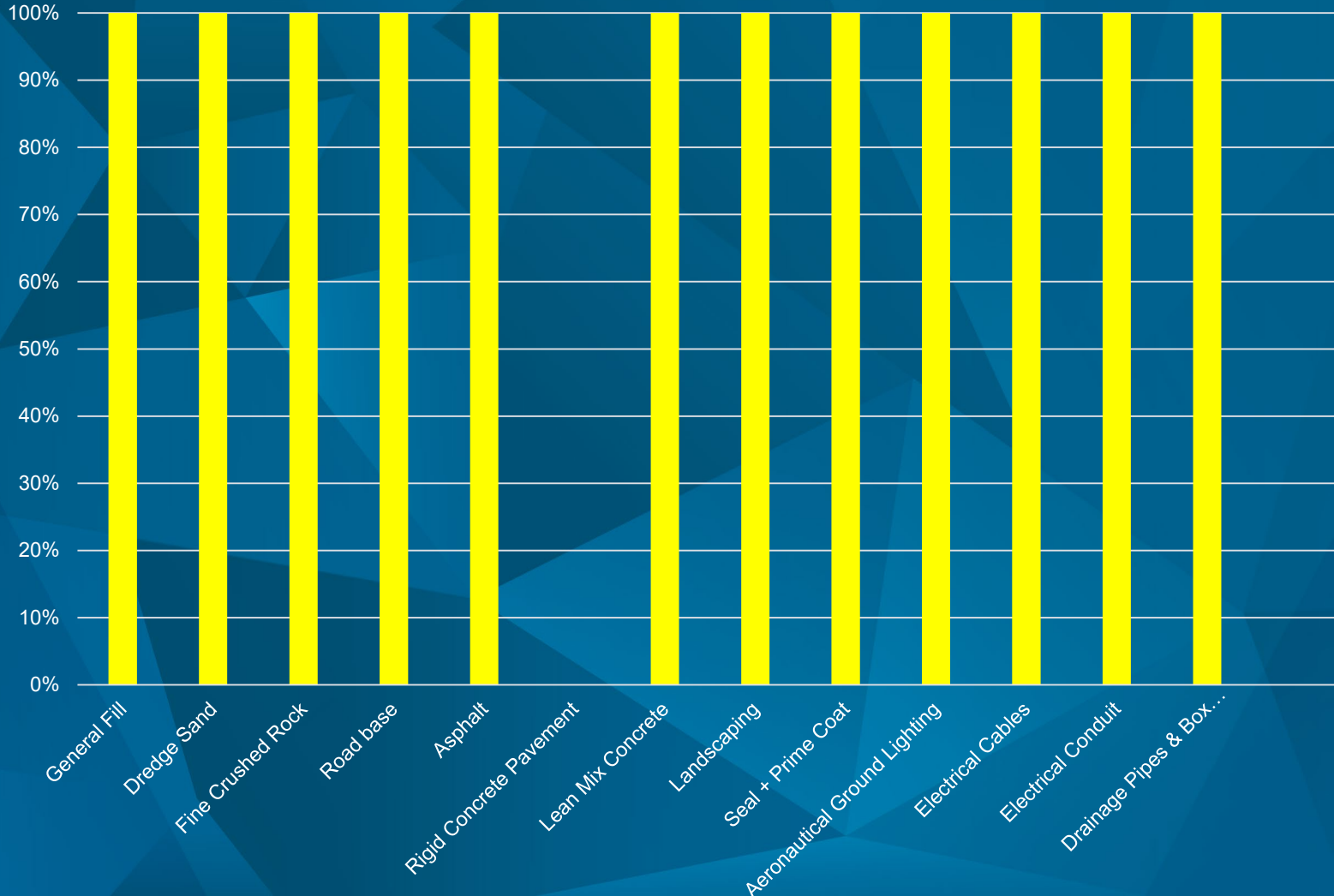
Aeronautical Ground Lighting
400 lights

Landscaping
140 hectares

Electrical Cables
48km

Electrical Conduit
25km

Drainage Pipes and Box Culverts
2000m



Concrete Apron Pavement



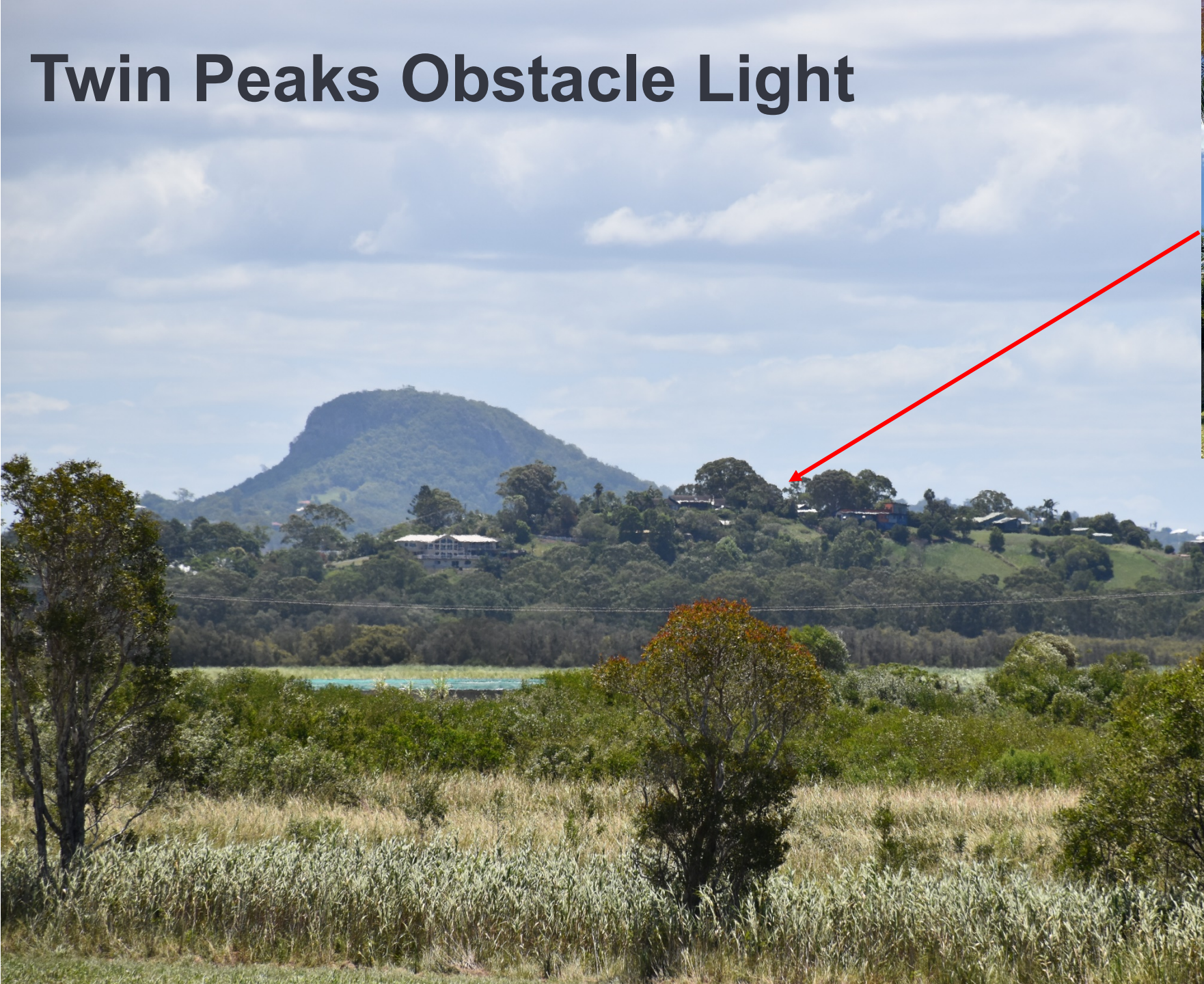
ARFFS Rapid Response Route



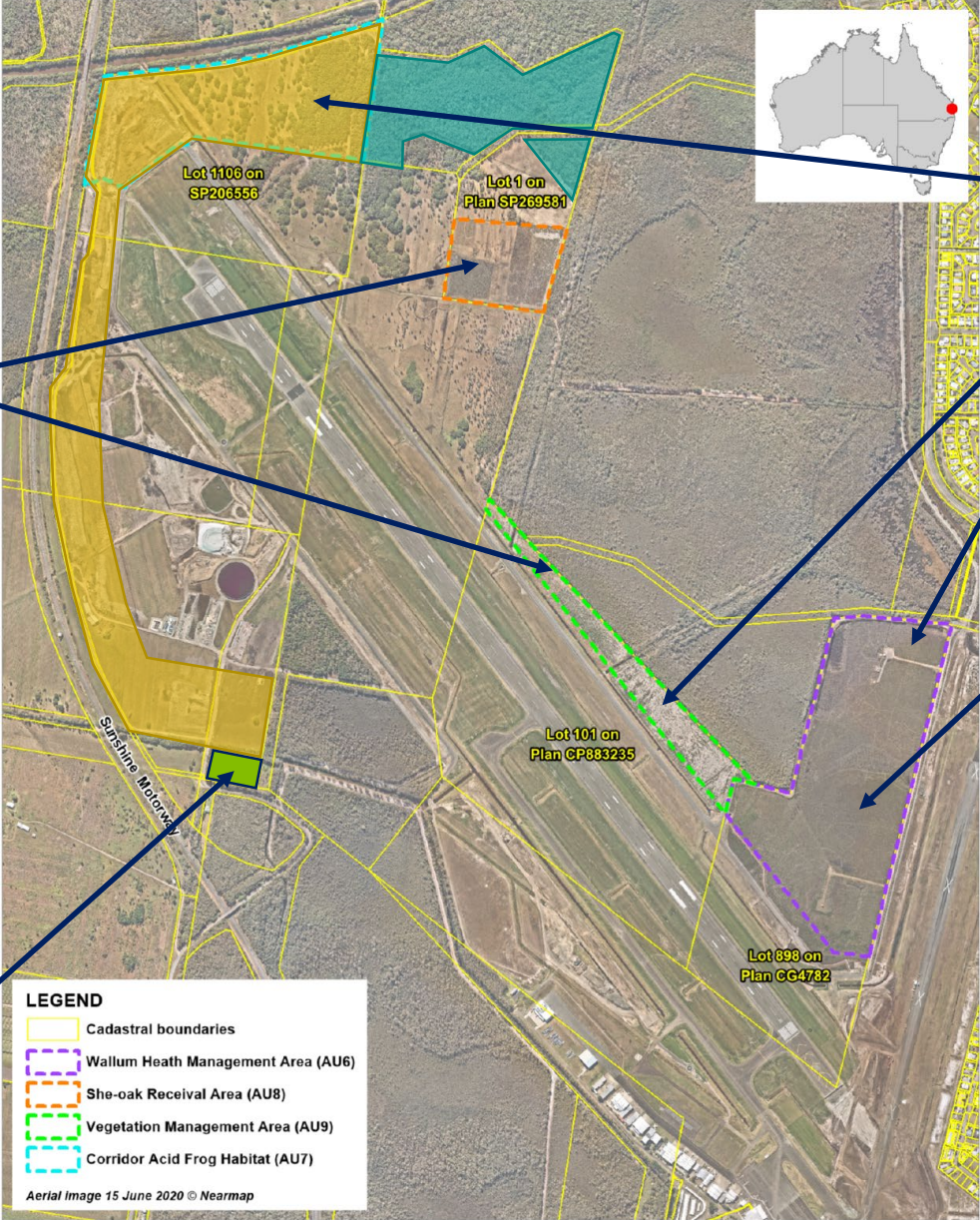
A dedicated response route

Response time of not greater than 180 seconds

Twin Peaks Obstacle Light



Environmental Offsets



+ Lower Mooloolah River Environmental Reserve (LMRER)

Flight Path and Airspace Design

- New flight paths and associated control space continues to be managed by Airservices Australia
- Airservices Australia have initiated a Post Implementation Review (PIR)
 - Terms of Reference
 - Community Engagement Plan



ORAT - Connected Leadership

Stakeholder Teamwork

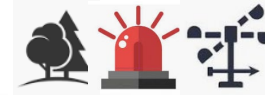
Beca

JOHN HOLLAND

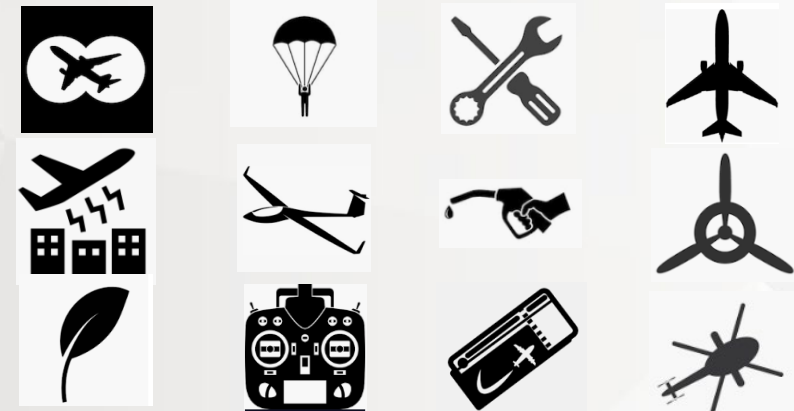
Downer
Relationships creating success
AVIONICS LIMITED
LIGHTING THE WAY

aurecon PR

aurecon IC



Communications Strategy



Community

ORAT TEAM

Regulatory and Government Agencies

Airport



What's Next

- Completion of on-site Environmental Offsets
- Off-site Environmental Offsets
- Completion of Environmental Site Audit

Sunshine Coast Airport



- Transfer of monitoring of on-site Environmental Offsets to SCA
- Transfer of off-site monitoring to LANA

Lower Mooloolah River Environmental Reserve (LMRER)



Thank you.



See Council's website for further details
www.sunshinecoast.qld.gov.au