



Document Control

Report Title:	Place Making Palmwoods Public Domain Masterplan
Project No.:	23574
Author:	Amanda Nielsen, Place Project Officer Asset Management & Design Transport Infrastructure Management
File Location:	W:\SCONS\PROJECTS\WIP\23574 Margaret St, Palmwoods - Masterplan
Revision:	Date
A - Draft	22/07/2014
B - Final	01/11/2014

© Sunshine Coast Regional Council 2014
www.sunshinecoast.qld.gov.au
mail@sunshinecoast.qld.gov.au
T 07 5475 7272 F 07 5475 7277
Locked Bag 72 Sunshine Coast Mail Centre Qld 4560

Acknowledgements
Council wishes to thank all contributors and stakeholders involved in the development of this document.

Disclaimer
Information contained in this document is based on available information at the time of writing. All figures and diagrams are indicative only and should be referred to as such. While the Sunshine Coast Regional Council has exercised reasonable care in preparing this document it does not warrant or represent that it is accurate or complete. Council or its officers accept no responsibility for any loss occasioned to any person acting or refraining from acting in reliance upon any material contained in this document.

Contents**Executive Summary**

1.0 Introduction		4.0 Public Domain Masterplan	
1.1 Place in Context	06	4.1 Masterplan - Area 1	26
1.2 Purpose and Methodology	07	4.2 Masterplan - Area 2	27
1.3 Strategic Framework	08	4.3 Masterplan - Area 3	28
1.4 Place Making Approach	09	4.4 Masterplan - Area 4	29
1.5 Strategic Framework	10	4.5 Town Square - Detail Plan	30
		4.6 Town Square Activation - Cross Sections	31
		4.7 Town Square Activation - Inspirational Images	32
		4.8 Town Centre Activation - Community Actions	33
2.0 Community Engagement			
2.1 Stage 1 - Identity and Values	12		
2.2 Stage 2 - Community Workshops	13		
2.3 Stage 3 - Public Domain Masterplan	14		
2.4 Summary of Draft Masterplan Feedback	15		
		5.0 Character Palettes	
		5.1 Regional Ecosystems	36
		5.2 Planting Palette - Inspirational Images	37
		5.3 Edible Plants / Bush Tucker / Sensory Species	38
		5.4 Materials Palette - Inspirational Images	39
		6.0 Implementation Plan	
		6.1 Implementation	44
		6.2 Potential Funding Sources	45
3.0 Place Making Themes			
3.1 Connecting the Community		Appendix	
3.1.1 Active Transport Network	18	Community Engagement Report	
3.1.2 Wayfinding and Pedestrian Signage	19	Stories of Palmwoods	
3.1.3 Vehicle Circulation	20		
3.1.4 Vehicle Parking	21		
3.2 Local heritage places /			
Vibrant and diverse community and culture	22		
3.3 Natural environment and sustainable living	23		



e Executive Summary

Place Making Palmwoods

The purpose of this Masterplan is to define the blueprint for the 'look and feel' of the Palmwoods streets and public spaces. It draws inspiration from the town's identity, character and community values.

This Masterplan applies core place making principles with a focus of people, place, and partnerships. Place making is an integrated approach to working with communities to create meaningful and activated places. It is a powerful and holistic process of understanding, facilitation, innovation and activation that grows unique, resilient and vibrant communities.

This Masterplan has been developed in collaboration with the Palmwoods community following an extensive engagement process that occurred between November 2013 and August 2014.

Key objectives of the Masterplan are to:

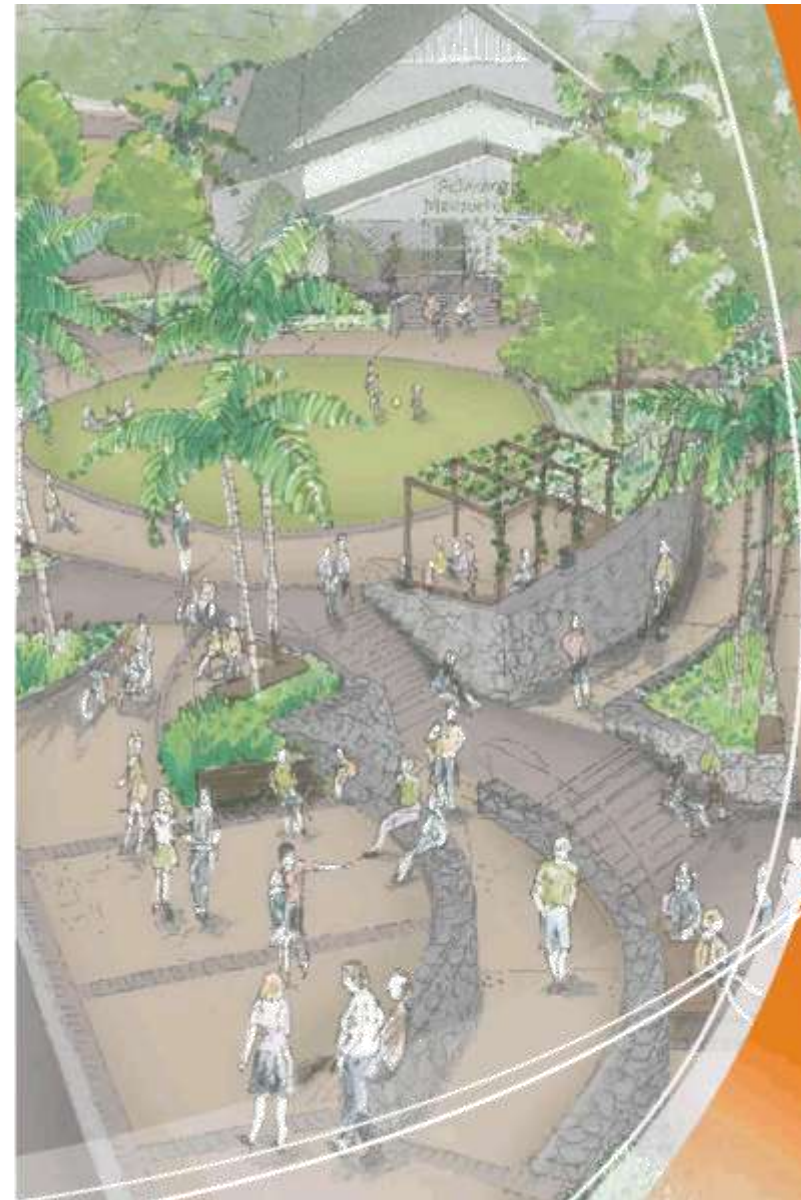
- To provide traffic calming outcomes and safe pedestrian crossing facilities
- To develop a new Town Square as the 'civic heart' of Palmwoods
- To connect the retail precincts of Margaret, Main and Church Streets through vibrant, active, shady, pedestrian and cycle friendly streets and public spaces
- To develop community gathering/seating points, and more outdoor dining opportunities
- To develop a streetscape planting and infrastructure palette that reflects the Palmwoods country town character

The Masterplan is aligned with legislation and the Sunshine Coast Planning Scheme 2014, supporting Palmwoods role as a Local (Full Service) Activity Centre. The Masterplan provides strategic direction and guidance for:

- The public domain and open space network.
- Streetscape improvements provided as part of the development application process.
- Identifying future projects, partnerships and potential funding sources from all levels of government and the private sector.
- The delivery of public infrastructure through council's Capital Works Program:
 - \$2.5million Priority Streetscape Improvements (2017/18 Financial Year - subject to council budget process. NOTE: approx \$2.0M construction budget).

With respect to the development process, the Palmwoods local plan code in the Sunshine Coast Planning Scheme 2014, requires development adjacent to identified primary streetscape treatment areas to provide streetscape improvements to complement existing and proposed streetscape works in the local area.

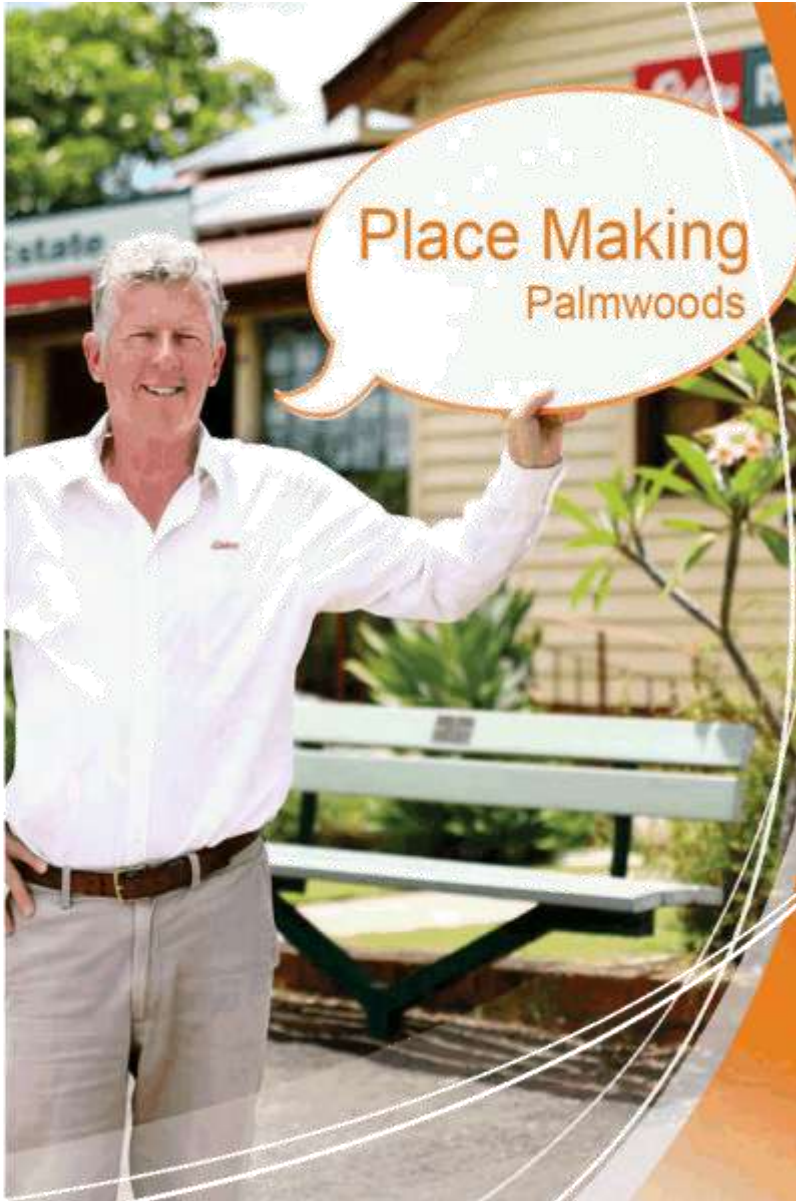
The Place Making Palmwoods Public Domain Masterplan will be a key referral document upon which those streetscape works will be designed and constructed, and will inform the conditions of approval for relevant development applications.



(Page left intentionally blank)



1.0 Introduction



1.1 Place in Context

Palmwoods

Palmwoods is located in the central part of the Sunshine Coast on the North Coast Rail Line immediately south of Nambour and Woombye. Palmwoods is set within a picturesque rural and natural landscape on the foothills of the Blackall Range. Palmwoods is characterized by an undulating topography and is surrounded by large areas of productive rural land. It is believed that Aboriginal pathways, or walking tracks were once located through and behind Palmwoods, linking the coast to nearby Eudlo and Mooloolah (Kerry Jones, 2014).

Palmwoods is named after the Piccabeen Palm groves that grew in abundance in the area. Settlement of the area dates from the 1880s, with land used mainly for timber-getting, farming and citrus growing. Growth took place during the late 1800s, spurred by the opening of the railway line in 1891. Significant residential development did not occur until the post-war years, with rapid growth from the 1970s.

The Palmwoods Town Centre is based along Main Street and Margaret Street and has a traditional main street character with a number of older buildings that provide a strong sense of history. The town centre services local residents and nearby rural residential areas, whilst also providing tourist services to visitors.

The North Coast Rail Line is planned to be subject to re-alignment and duplication, with the proposed new alignment through Palmwoods shifting the rail line and station to the east and freeing up existing rail land for alternative uses and potential improvements to the town centre (subject to future planning).

The extent of this Masterplan is focused on the Public Domain areas located to the west of the existing rail alignment, future proofing infrastructure improvements within the proposed Primary Streetscape Treatment Area (as nominated in the Sunshine Coast Planning Scheme 2014).



Palmwoods Town Centre

- Extent of Masterplan Area
- Proposed Primary Streetscape Treatment Area
- Existing Rail Corridor
 - Land for potential alternative uses following Rail Corridor Upgrade (subject to future planning)
- Proposed Rail Corridor Upgrade
 - Future re-alignment of the North Coast Rail Line



1.2 Project Methodology

Project Purpose

The purpose of this Masterplan is to define the blueprint for the 'look and feel' of the Palmwoods streets and public spaces. It draws inspiration from the town's identity, character and community values.

- Stage 1 Values and Identity
- Stage 2 Community Workshops
- Stage 3 Development of the Place Making Palmwoods Public Domain Masterplan

Key Community Issues:

The following is a summary of key issues identified during the community workshops:

- Segregated commercial precincts
- Lack of community civic space
- Traffic speed and safety on Margaret Street
- Dangerous road intersections
- Improve pedestrian pathways / crossing points / access / toilet / lighting
- Retaining the village's historical identity / character
- Residents are not shopping local
- Need more landscaping and shade in town
- Lack of entry statements and poor town signage
- Capture passing tourist market

The Public Domain Masterplan was subsequently developed to address these community issues.

2016/2017 - Detailed Design

- Confirm construction priority area(s) relevant to budget available
- Detailed Design and Construction Documentation of priority area(s)

2017/2018 - Construction

- Construction of priority streetscape works \$2.5million (2017/18 Financial Year - subject to council budget approval process)
 NOTE: approx \$2.0M construction budget

Project Methodology

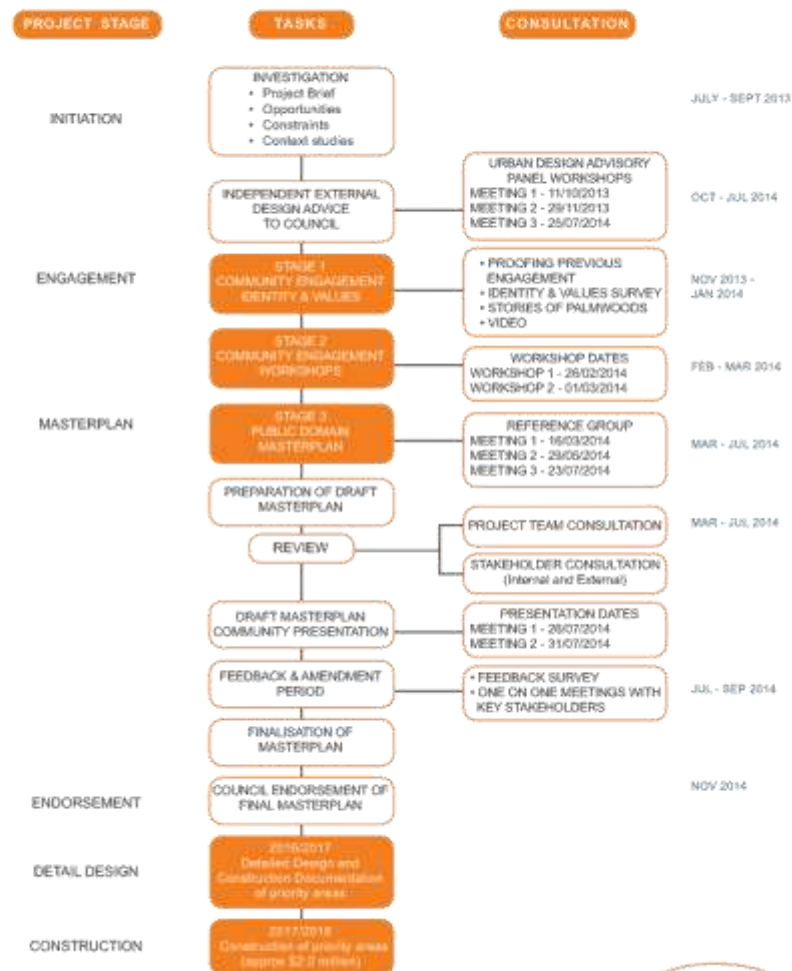
The Place Making Palmwoods Public Domain Masterplan is to be delivered through a staged process of community engagement, detail design and construction delivery of priority works to occur between the 2013 - 2018 financial years (subject to councils budget approval process).

Project Objectives

- To provide traffic calming outcomes and safe pedestrian crossing facilities
- To develop a new Town Square as the 'civic heart' of Palmwoods
- To connect the retail precincts of Margaret, Main and Church Streets through vibrant, active, shady, pedestrian and cycle friendly streets and public spaces
- To develop community gathering/seating points, and more outdoor dining opportunities
- To develop a streetscape planting and infrastructure palette that reflects the Palmwoods country town character

2013/2014 - Community Engagement and Public Domain Masterplan

The Masterplan was delivered through three stages with each stage focused around community and stakeholder engagement:



1.3 Strategic Framework

Corporate Plan

The Sunshine Coast Council Corporate Plan 2014-2019 outlines Council's aspirational vision for the Sunshine Coast:

To be Australia's most sustainable region – vibrant, green, diverse.

This Masterplan demonstrates Council's corporate initiative of place making to create and protect towns with unique and individual identities.

The following adopted council strategies, plans and policy documents, have been considered in the development of this Masterplan.

- Sustainable Transport Strategy 2011-2031
- Active Transport Plan 2011-2031
- Sunshine Coast - The Natural Advantage: Regional Economic Development Strategy 2013-2033
- Rural Futures Strategy 2013
- Open Space Strategy 2011
- Biodiversity Strategy 2010
- Waterways & Coastal Management Strategy 2011
- Recreation Trail Plan 2012
- Public Art Policy 2011
- Festival Season Strategy 2010-2015
- Community Events and Celebrations Strategy 2010
- Youth Strategy 2010-2015

Related Projects (separate from Masterplan)

The Masterplan is focused on the Public Domain areas of Palmwoods streets and open spaces located to the west of the existing rail corridor. This Masterplan is separate from the following related projects:

- Sunshine Coast Planning Scheme 2014 (private land areas)
- Future State Government rail corridor upgrade
- Future private developments

Design Parameters

- Margaret Street is under the jurisdiction of the Department of Transport & Main Roads (TMR)
- The Palmwoods Memorial Hall land is owned by the Department of Natural Resources & Mines (DNRM) and managed by the Palmwoods Memorial Hall Association.
- Availability of future Capital Works Budgets and alternative grant funding opportunities



Sunshine Coast Open Space Strategy 2011

The strategy provides the following future directions for Palmwoods, supporting the potential development of a Town Square:

- Consider opportunities for a local recreation park and civic space in the town centre to activate the community hub in Palmwoods
- Community hub parks should contain good physical and visual connectivity with active areas, civic spaces and commercial and community facilities including cafés, restaurants, etc.

1.4 Place Making Approach

What is Place Making?

Place making is an integrated approach to working with communities to create meaningful and activated places. It is a powerful and holistic process of understanding, facilitation, innovation and activation that grows unique, resilient and vibrant communities. It involves building on a place's unique identity and character to enhance the way people think so they develop a sense of place and belonging.

There are a number of key principles that support council's place making vision:

- community values and people are at the heart of place making
- engaging and collaborating with stakeholders and community
- building community capacity to take action
- the 'look and feel' of our community centres should reflect the values of the people and place
- achieving integrated and sustainable place outcomes.

Place Making Themes

Results from the Community Identity and Values Survey have informed the following key place making themes to help guide the development of the Masterplan:

- Connecting the community
- Local heritage places
- Natural environment and sustainable living
- Vibrant and diverse community and culture

Connecting the community	Local heritage places	Natural environment & sustainable living	Vibrant and diverse community and culture

(Page left intentionally blank)



2.0 Community Engagement



2.1 Community Engagement

Engagement Summary

The Place Making Palmwoods Public Domain Masterplan has been delivered through three stages, with each stage focused around community and stakeholder engagement. This collaborative and participatory community engagement process has resulted in a resounding 96% support for the Draft Masterplan when presented to the community in July / August 2014.

Stage 1 - Community Engagement Values and Identity

Proofing the previous engagement:

Between November 2013 and January 2014 council completed one on one meetings with key stakeholders comprising of Palmwoods businesses and community groups. In total six groups and fourteen businesses participated testing the previously developed plans and proposals for Palmwoods that occurred between 2002 - 2008.

Identity & values survey:

The survey was open to the Palmwoods community from 26 February to 31 March 2014. The survey was managed through survey monkey and completed by 85 people. Council is currently undertaking an online survey with a focus of how the youth of Palmwoods would like to use a future Town Square and flexible spaces.

Stories of Palmwoods:

Council completed a series of interviews with residents for compilation of the 'Stories of Palmwoods'. These stories will be used to inform the Masterplan and may guide future themes for a public art brief and potential interpretive projects.

Video:

A show reel of what people said about Palmwoods is available to view on youtube www.youtube.com/watch?v=1H-yChmmMZA.



Stage 1 - Results

Survey results have strongly identified Palmwoods as a country town with heritage character. There is also a substantial link to the railway and alternative living. Locals appreciate the laid back lifestyle in Palmwoods and feel they are part of a connected and friendly community.

The people of Palmwoods are a diverse mix with a strong presence of young families and retired people. This includes multi-generational families still living in the town. Participants also identified farmers and people seeking alternative or sustainable lifestyles.

The community vision for the town is to maintain its village and historical character with an active public space and connected walking paths. Respondents also expressed a desire to be able to shop and socialise locally. Improved landscaping, trees, community events and markets are also a priority.

There is also a feeling the town could be promoted as a tourism stopover and a gateway to the hinterland. Improved entry statements and wayfinding signage are also desired.

Slowing down traffic and creating a more pedestrian friendly environment in the town centre is part of the community's vision for Palmwoods. There is also interest in promoting the town as a precinct for education, creativity and local produce.

Partnerships between business, the community and council have been identified as key components to help Palmwoods advance. Developing a coordinated plan for precinct events, programs and funding opportunities is also identified as key priority.

Figure 1: How would you describe the identity of Palmwoods?

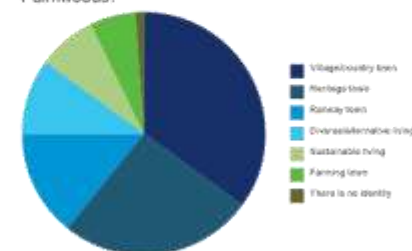
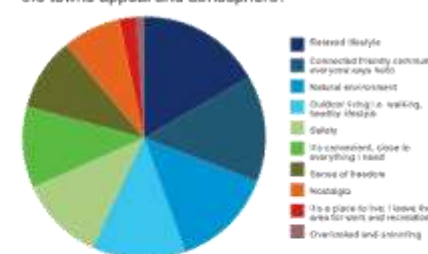


Figure 2: What do you love about Palmwoods, what is the towns appeal and atmosphere?



2.2 Community Engagement

Stage 2 - Community Engagement Workshops

Council invited the community to provide input into the Place Making Palmwoods Public Domain Masterplan, with workshops held at the Palmwoods Bowls Club on 26 February and 1 March 2014. The workshops were formatted around three themed tables for community discussion and feedback.

- Table A: Masterplan - Concept Diagram
- Table B: Town Square
- Table C: Margaret Street

In total 75 participants attended the two workshops, providing clear direction for the development of the Draft Masterplan.

Stage 2 - Results

Table A: Masterplan - Concept Diagram

Community Issues:

- 1.1 Segregated commercial precincts
- 1.2 Poor town navigation
- 1.3 Uptake of sustainable transport options
- 1.4 Car parking areas
- 1.5 Lack of pedestrian lighting

Workshop Discussion

- There was strong feedback for the need to improve pedestrian connections across the road network (particularly Margaret Street). Consider through block connections in future planning. Investigate future off-street car parking.

Design Response

Refer to appendix for community workshop plan.



Table B: Town Square

Community Issues:

- 2.1 Lack of town heart
- 2.2 Lack of community spaces
- 2.3 Lack of shade
- 2.4 Poor toilet block location
- 2.5 Retention of significant views

Workshop Discussion

- There was full support for developing a Town Square. This open space would provide a large flat open area for community events and social gatherings.
- The supported concept allows for a two-way street in front of the heritage shops with parallel car parking. The option for a one-way street was investigated and deemed not feasible, due to the need for a large vehicle turn around facility at the eastern end of Hill Street (impacting on existing car parks and significant trees).
- Vehicle access from Main Street to the square is unachievable due to technical engineering constraints. However, access for all users is enabled through pedestrian ramps and stairs.
- Following investigation the potential toilet block relocation below the Town Square was deemed not feasible due to visual surveillance, safety and cost issues. However, beautification of the existing toilet block and the potential future relocation to the east of the current site, would improve views and the open space area to the north of the Memorial Hall.

Design Response

Refer to appendix for community workshop plan.



2.3 Community Engagement



Table C: Margaret Street

Community Issues:

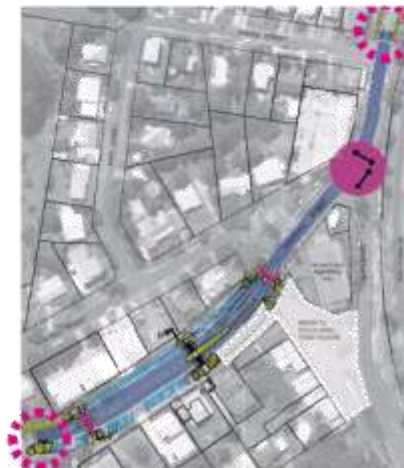
- 3.1 Reduce speed on Margaret Street
- 3.2 Lack of safe pedestrian crossing opportunities
- 3.3 Dangerous intersections

Workshop Discussion

- In the first workshop Council presented two options for Margaret Street. Option one included centre median street tree planting with parallel parking to the north side of the street, and nose-in angled parking to the south. Option two explored nose-in angled parking to both the north and south sides of the street. Strong feedback was provided to not change the existing road layout adjacent to Ricks Diner.
- Following feedback from the first workshop, a third option was sketched for Margaret Street. This was based on a simplified option for the street that looked at retaining the existing parking and centre median line marking, with two improved pedestrian crossing facilities: One opposite Rick's Diner and the other in front of the Heritage Bank/ Post Office. This third option was the preferred option when presented at the second workshop.
- There was overall support for a 40 km/h zone through town on Margaret Street with only some negative feedback.

Design Response

Refer to appendix for community workshop plan.



Stage 3 - Community Engagement Public Domain Masterplan

Palmwoods Masterplan Reference Group:

Three reference group meetings were held with 38 interested community members attending:

- Meeting 1 (16/03/2014) - Presented survey results and development of design brief for the Town Square and Margaret Street.
- Meeting 2 (29/05/2014) - Presented draft plans for feedback and further development of options for the Town Square.
- Meeting 3 (23/07/2014) - Presented Draft Public Domain Masterplan

Public Domain Masterplan

- Community Presentations

Two community presentations of the Draft Masterplan were held on Saturday 26th and Thursday 31st July 2014.

- Draft Masterplan Survey

From Saturday 26th July to Monday 18th August, the Draft Masterplan was subject to a three week notification period, during which two information sessions were held with the community to obtain one-on-one feedback. Council officers also met with individual business owners to the Main Street heritage shops to identify specific feedback and issues. Overall, 58 survey respondents were received on the Draft Masterplan, with 96% support for the proposal.

2.4 Community Engagement

Summary of Draft Masterplan Feedback

ITEM	DRAFT MASTERPLAN FEEDBACK	RESPONSE	FINAL MASTERPLAN AMENDMENTS
1.0	Car Parking		
1.1	Concern with loss of car parking to allow for the Town Square	<ul style="list-style-type: none"> Relocation of car parks to immediately adjoining locations on Hill and Margaret Streets Masterplan achieves a no net loss of car parking throughout the village centre Masterplan promotes active transport modes through the provision of shady pathways and improved connectivity to encourage people to walk or cycle, rather than drive between shops. 	Review car parking designations and durations in town and install parking signage accordingly
1.2	Potential future 90 degree car parking to Hill Street received some negative feedback	<ul style="list-style-type: none"> 90 degree parking deleted from Masterplan 	90 degree parking deleted from Masterplan
2.0	Road Safety		
2.1	Concern with road safety on Margaret Street	<ul style="list-style-type: none"> Reduce road sign speed to 40km/h on Margaret St Reduce actual vehicle speeds along Margaret St through: <ul style="list-style-type: none"> Side friction – landscaping with street trees on side of road and centre median Road humps Dappled light of trees and landscaping colour Increased number of safe pedestrian crossing facilities: <ul style="list-style-type: none"> Kerb extensions Raised hump (wombat) crossing near Ricks Diner, with pedestrian crossing Pedestrian refuges Kerb build outs at Main and Margaret St intersection Potential future intersection upgrades (subject to TMR approval) Landscape entry treatments to calm traffic and signify village centre environment 	N/A
2.2	Potential future traffic signals at the Main St and Margaret St intersection received some negative feedback	<ul style="list-style-type: none"> The Masterplan proposes an improved realigned intersection at Main St and Margaret St (not dependent on traffic signals) A round-about facility is not feasible due to the constrained road reserve space (pinch point between rail corridor and shops) 	N/A
2.3	Feasibility of potential right turn manoeuvre into Margaret Street from the Town Square road connection	<ul style="list-style-type: none"> Subject to Department of Transport and Main Road approval dependant on: <ul style="list-style-type: none"> Raised pedestrian crossing and reduce speed limit to Margaret Street 	N/A
3.0	Two-way verses one-way road		
3.1	Discussion regarding option for a two-way road verses a one-way adjacent to the Main Street heritage shops and the proposed Town Square	<ul style="list-style-type: none"> Council met one on one with business owners along the Main Street heritage shops, who had a preference for a one-way road option Council tested both options and confirmed preference for a two-way road configuration. Agreement was achieved with all current business owners to retain the two-way road configuration The following issues were identified with a one-way road configuration: <ul style="list-style-type: none"> vehicle/truck turn-around required on Hill Street: <ul style="list-style-type: none"> rubbish service to both sides of street hammer head not viable due to truck size removes minimum 8 car parks loss of possibly 2 trees amenity of street worsened, not heritage high cost of turn around facility as Hill Street is too steep requiring costly levelling and retaining = impact on Town Square financial achievability One way does not increase car parks overall One way = Less vehicle movements = Reduced sense of activity in front of shops = potential business trade decrease and vitality Delivery access to shops impacted Difficult reverse parking on right side Not traditional Main St outcome Lacks legibility for visitors Low vehicle numbers (Current VPD = 120 and Future VPD = 210). Note: VPD = Vehicles Per Day (6VPD x 20 units with 75% access eastern end of Hill St) The two-way road configuration meets AustRoads Standards & retains existing memorial pavers 	N/A

2.5 Community Engagement

Summary of Draft Masterplan Feedback

ITEM	DRAFT MASTERPLAN FEEDBACK	RESPONSE	FINAL MASTERPLAN AMENDMENTS
4.0	Town Square		
4.1	Community preference for Option 1 - Town Square layout	<ul style="list-style-type: none"> Delete Option 2 - Town Square layout from the Masterplan 	Delete Option 2 - Town Square layout from the Masterplan
4.2	Maximise soft surfaces, shade and greenery in the Town Square	<ul style="list-style-type: none"> Design review of Option 1 - Town Square area to confirm feasibility of increasing grass area Design review of shade trees and garden bed planting to the Town Square 	During the detail design stage investigate options to maximise soft surfaces, shade and greenery in the Town Square
4.3	Potential roof/shade structure to the Town Square pergola	<ul style="list-style-type: none"> The intention of the proposed pergola structure is to maintain significant views from the Town Square to the surrounding landscape There was also feedback requesting the Town Square to be a flexible space, with no need for roof to structure 	N/A - No roof structure to be added
4.4	Improve outdoor dining opportunities	<ul style="list-style-type: none"> The Masterplan aims to promote outdoor dining to frontage of the heritage shops and other areas throughout Palmwoods Opportunity for street activation and markets to the road area adjacent to the Town Square during temporary road closure 	N/A
5.0	Natural Environment and Sustainable Living		
5.1	Planting palette should reflect the local regional ecosystem, be easily maintainable, considers opportunities for edible plants (eg. citrus trees and sensory garden beds) and attractive flowers and foliage to create interest.	<ul style="list-style-type: none"> Masterplan officers met with Park Maintenance crew and confirmed planting palette options and approval for use of edible plants and sensory species, including plants with attractive flowers and foliage 	Amend Masterplan planting palette and add notation to promote this use.
5.2	Opportunity for potential subsoil water tank below the Town Square for storm water harvest and irrigation	<ul style="list-style-type: none"> Include in the Masterplan as a proposal, subject to budget constrains or change in maintenance practice 	During the detail design stage investigate options for underground water tanks to the Town Square
6.0	Heritage Character & Community Identity		
6.1	Feedback to maintain the community values of a country town and heritage character, combined with a vibrant and diverse culture	<ul style="list-style-type: none"> Provision of the Town Square improves opportunity for community events and connection The Masterplan streetscape infrastructure palette aims to reflect the community values of a country town and heritage character The Masterplan identifies potential streetscape art opportunities to celebrate local stories and people 	N/A
7.0	Poor Accessibility, Legality and Connectivity		
7.1	Issue with segregated commercial precincts	<ul style="list-style-type: none"> The Masterplan aims to improve accessibility, legality and connectivity through: <ul style="list-style-type: none"> Improve pathway connections around town to consider all users (includes mobility scooters) Improve pedestrian road crossing opportunities Consider future cross-block connections Increase shade to pathways with trees and more awnings Increase pathway lighting Provide improved on and off road bike pathways and bike parking Relocate toilet block once it reaches the end of serviceable life to open vista to Memorial Hall Book end the town with entry treatments and streetscape landscaping to create a destination 	N/A
7.2	Issue with navigation around town	<ul style="list-style-type: none"> Signage investigation required to determine sign types that reflect the character of Palmwoods including: <ul style="list-style-type: none"> Pedestrian wayfinding signage Vehicle signage Heritage signage / trail Community notice board Potential Community Public Art project (beautification of the existing toilet facility) 	Include signage investigation in Masterplan
8.0	Business Vitality		
8.1	Issue with residents not shopping local and potential to capture the passing tourist market	<ul style="list-style-type: none"> The Masterplan aims to support business vitality Street activation / tourism potential <ul style="list-style-type: none"> Town Square events such as markets, festivals or outdoor cinema can promote the visitor and tourism potential of Palmwoods. The diverse people and culture, country town atmosphere, heritage character and sustainable lifestyle can create a point of difference as a key destination and gateway to the hinterland Streetscape infrastructure upgrades to improve amenity and desire for passing trade to stop and spend locally New shopping development may improve business confidence and vitality once developed 	N/A



3.0 Place Making Themes



3.1 Connecting the Community - Active Transport Network



Masterplan Objectives

Connecting the community is key objective of the Masterplan, with this chapter identifying potential future active and sustainable transport networks. These plans show current and potential future access networks for all-ability pedestrians, mobility scooters, bicycles, public transport, vehicles and parking to decrease the dependence on private vehicles and encourage a modal shift where possible.

Provision of active transport networks such as walking and cycling contain multi-layered community benefits including improved town centre vibrancy, healthy lifestyles and contribution to the overall sustainability of the region.

Associated Strategies

- Sustainable Transport Strategy 2011-2031
- Active Transport Plan 2011-2031

Design Response

- Local Centre Zone (as per Planning Scheme 2014)
- Primary Active Street Frontage (as per Planning Scheme 2014)
- Community Facilities Zone (as per Planning Scheme 2014)
- Open Space Network
- Future Town Square
- Potential formal zebra pedestrian crossing
- Potential informal pedestrian crossing facilities (pedestrian refuges, kerb built-outs, ramps)
- Pedestrian / cycle linkage
- Potential future pedestrian through-block connection
- On-road cycle facilities
- Bicycle Racks
- Railway Station
- Bus Stop
- Toilet



3.1 Connecting the Community - Wayfinding & Pedestrian Signage



Design Response

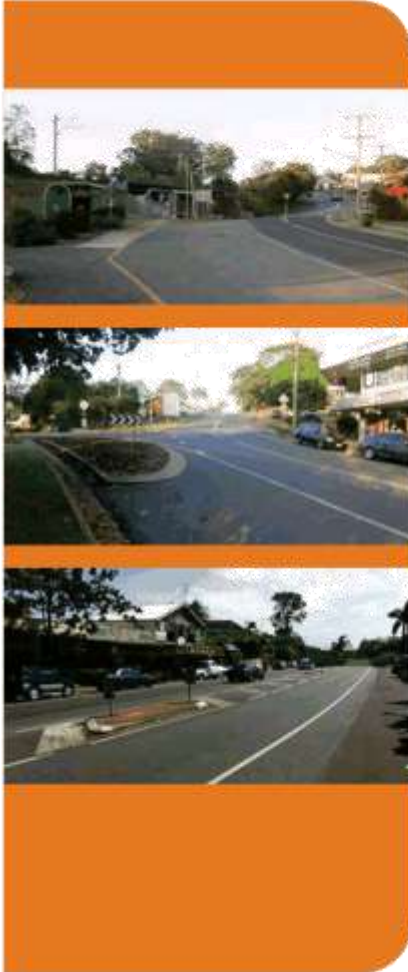
- Pedestrian / cycle linkage
- Potential future pedestrian through-block connection
- Major Arrival Points
- Decision Points
- Informations Signs
- Direction Signs
- Illuminated Sign (Power Required)

Pictograms



NOTE: Images show Council's Regional Wayfinding Signage Suite 2 - Timber and Aluminium. Refer to Chapter 5.0 Character Palettes for investigation into sign types that reflect the character of Palmwoods.

3.1 Connecting the Community - Vehicle Circulation



Masterplan Objectives

The Masterplan has identified improvements for traffic calming, vehicle navigation, circulation and safety with the aim of capturing and servicing potential visitors. The community has identified a strong desire to reduce vehicle speed limits along Margaret Street with improved formal and informal pedestrian facilities.

Associated Strategies

- Sustainable Transport Strategy 2011-2031

Design Response

-  Future Town Square
-  Existing speed limit 50km/h zone
-  Potential speed limit reduction 40km/h zone
-  Retain existing speed limit (wines)
-  Potential traffic calming device (asphalt speed cushion)
-  Potential gateway / entry point (with planting and kerb build outs)
-  Potential intersection improvement
-  Potential formal zebra pedestrian crossing to Margaret Street
-  Potential informal pedestrian crossing facilities (pedestrian refuges, kerb build-outs, ramps)

Scale 1:1500 © AC



3.1 Connecting the Community - Vehicle Parking



Scale 1:1000 @ A0

Masterplan Objectives

Vehicle parking management is fundamental to an integrated transport network. A car parking plan has identified existing and potential future on-street and off-street car parking opportunities.

Car parking change management plan:

Potential signage and village car parking pamphlet to increase awareness of all public and private car parking opportunities.

- Promote business owners and staff to park away from priority car parks.
- Review car parking designations and durations in town and install parking signage accordingly.
- Identify potential future public land for off-street car parking.
- Community to encourage car parking change management actions.
- Negotiate with Queensland Rail (QR) regarding potential future car parking opportunities to east of the existing rail alignment.

Design Response

- Existing on-street and off-street car parking
- Proposed reconfigured car parking to potential Town Square area
- Potential additional on-street car parking
- Existing railway station car parking
- Potential future off-street car parking
- Potential future parking and pedestrian connection to the east of Main Street (subject to future rail realignment and planning, Queensland Rail)
- Potential future informal temporary gravel car park (Queensland Rail)
- Retain current informal car parking to east of Main Street
- Parking located on private land
- Railway Station
- Bus Stop



3.2 Local heritage places / Vibrant and diverse community and culture



Masterplan Objectives

The Masterplan identifies the local heritage places within Palmwoods, and seeks to support a vibrant and activated town centre with diverse community culture.

Potential future Town Square

The Masterplan responds to the community's strong desire for a new Town Square to be developed as the 'civic heart' of Palmwoods. The Town Square would provide a vibrant community hub park and flexible space for events and activation.

Stories of Palmwoods

Council completed a series of interviews with residents for compilation of the 'Stories of Palmwoods'. These stories have been used to inform the Masterplan and may guide future themes for a public art brief and possible interpretive projects.

Community Networks

- Local business and property owners
- Local papers, websites and social media
- Palmwoods Progress Association
- Palmwoods Memorial Hall Association
- Palmwoods Living History Society
- Palmwoods and District RSL
- Palmwoods Bowls Club Inc
- Palmwoods/Woombye Lions Club Inc

Associated Strategies

- Community Events and Celebrations Strategy 2010
- Festival Season Strategy 2010-2015
- Public Art Policy 2011
- Youth Strategy 2010-2015
- Open Space Strategy 2011

Design Response

- Town Square - Civic Heart
 - Community event space
- Local Centre Zones
 - Diverse activity and community culture
- Local heritage place
- Local heritage opportunity
 - Potential heritage walk (funding opportunities to be identified)
- Integrated public art opportunities

3.3 Natural environment and sustainable living



Masterplan Objectives

The Masterplan aims to support Palmwoods as a sustainable Local Activity Centre. The community has a strong interest in promoting the town as a precinct for sustainability, creativity and local produce. Council's CommunityHub provides an on-line networking portal to promote events and existing programs such as:

- Living Smart Palmwoods (Council event)
- Caring for your bushland (Council program)

Local organisations / initiatives

- Lifestyle cafés, local produce, retail and holistic therapies
- Compass Institute Inc
- Palmwoods.net.au

Existing marketing initiatives for promotion of the regions fresh food:

- 'Seasons of the Sun'
- 'Local Harvest'
- Sunshine Coast Destinations
- Hinterlandtourism.com.au

Associated Strategies

- Biodiversity Strategy 2010
- Waterways & Coastal Management Strategy 2011
- Open Space Strategy 2011
- Recreation Trail Plan 2012
- Rural Futures Strategy 2013

Design Response

- Open space areas
- Character and native vegetation areas
- Opportunity to strengthen wildlife corridor through street tree planting
- Potential future Town Square to support local community sustainable initiatives and events
- Potential future open space area located to north of CWA Hall (existing road reserve)
- Protection of significant character trees
- Potential stormwater drainage improvements with future rail re-alignment
- Environmental opportunity
- Waterway / Stream



4.0 Draft Public Domain Masterplan



Masterplan Purpose

The purpose of this Masterplan is to define the blueprint for the 'look and feel' of the Palmwoods streets and public spaces. It draws inspiration from the town's identity, character and community values.

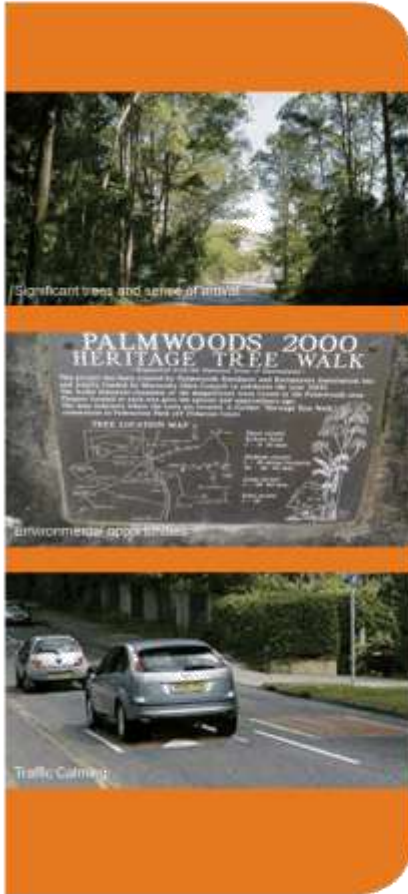
Key objectives of the Masterplan are to:

- To provide traffic calming outcomes and safe pedestrian crossing facilities
- To develop a new Town Square as the 'civic heart' of Palmwoods
- To connect the retail precincts of Margaret, Main and Church Streets through vibrant, active, shady pedestrian and cycle friendly streets and public spaces
- To develop community gathering/seating points, and more outdoor dining opportunities
- To develop a streetscape planting and infrastructure palette that reflects the Palmwoods country town character
- Inform State and Federal Government of the Palmwoods community's desire for future infrastructure.
- Identify future projects, partnerships and potential funding sources from all levels of government and the private sector.
- Inform the delivery of priority public infrastructure through council's Capital Works Program:
 - \$2.5million Priority Streetscape Improvements (2017/18 Financial Year - subject to council budget process. NOTE: approx \$2.0M construction budget).

Scale 1:1000 @ A0



4.1 Masterplan - Area 1



- Design Response**
- Bicycle racks
 - Wayfinding signage
 - Local heritage opportunity
 - Environmental opportunity
 - Pedestrian Linkage
 - Gateway / Entry Point (Traffic Calming)
 - Potential intersection upgrade
 - Existing railway corridor
1. Potential feature planting with kerb build outs
 2. Potential traffic calming device speed cushion
 3. Potential informal pedestrian crossing facilities, pedestrian refuges, kerb build-outs, ramps
 4. Potential centre median planting
 5. Potential future traffic signals / pedestrian crossing
 6. Car parking areas
 7. Potential future pedestrian connection (subject to future rail realignment and planning)
 8. Outdoor dining areas
 9. Shaded seating areas



4.2 Masterplan - Area 2



- Design Response**
- Bicycle racks
 - Wayfinding signage
 - Integrated art opportunity
 - Local heritage opportunity
 - Environmental opportunity
 - Pedestrian Linkage
 - Potential future pedestrian through-block connection
 - Gateway / Entry Point (Traffic Calming)
 - Potential intersection upgrade
 - Existing railway corridor
 - 1. Potential feature planting with kerb build-outs
 - 2. Potential traffic calming device speed cushion
 - 3. Potential formal zebra pedestrian crossing
 - 4. Potential informal pedestrian crossing facilities, pedestrian refuges, kerb build-outs, ramps
 - 5. Potential centre median planting
 - 6. Potential intersection improvements
 - 7. Car parking areas
 - 8. Retain current informal car parking
 - 9. Potential future car parking and pedestrian connection (subject to future rail realignment and planning)
 - 10. Outdoor dining areas
 - 11. Potential shaded seating areas
 - 12. Potential beautification of existing toilet block
 - 13. Potential future toilet block relocation
 - 14. Potential link to Station Masters House
 - 15. Potential traffic calming rumble strips

4.3 Masterplan - Area 3



Design Response

- Bicycle racks
- Wayfinding signage
- Local heritage opportunity

- Pedestrian Linkage
- Potential future pedestrian through-block connection
- Existing railway corridor

1. Potential feature planting with kerb build-outs
2. Potential traffic calming rumble stripe
3. Potential informal pedestrian crossing facilities, pedestrian refuges, kerb build-outs, ramps
4. Potential shaded seating areas
5. Potential link to Station Masters House
6. Potential open space area to north of CWA Hall (existing road reserve)
7. Retain and protect significant trees
8. Car parking areas
9. Retain current informal car parking east of Main Street
10. Potential future informal temporary gravel car park (Queensland Rail)



4.4 Masterplan - Area 4



Design Response

- Bicycle racks
- Wayfinding signage
- Local heritage opportunity

- Pedestrian Linkage
- Potential future pedestrian through-block connection
- Gateway / Entry Point (landscape treatment)
- Potential intersection upgrade
- Existing railway corridor

1. Potential feature planting with kerb build-outs
2. Potential informal pedestrian crossing facilities, pedestrian refuges, kerb build-outs, ramps
3. Potential shaded seating areas
4. Potential open space area to north of CWA Hall (existing road reserve)
5. Existing playground to south of CWA Hall
6. Car parking areas
7. Potential future informal gravel car park (Queensland Rail)



4.5 Town Square - Detail Plan



Town Square

Scale 1:250 @A0



Perspective 1 - Town Square Area



Perspective 2 - Activation to south of Memorial Hall

Legend

- | | |
|---|--|
| 1. Improved pedestrian connection with steps and all-abilities access ramp | 12. Potential beautification to existing toilet block |
| 2. Pedestrian crossing facilities | 13. Potential future toilet block relocation to open vista to hall |
| 3. Traffic calming rumble strips | 14. Car parking areas |
| 4. Outdoor dining areas to heritage shops on existing pavements | 15. Retain current informal car parking |
| 5. Activation to southern edge of Memorial Hall | 16. Potential future car parking and pedestrian connection |
| 6. Potential future hall information centre | 17. Potential link to future development and Station Masters House |
| 7. Family friendly grassed picnic area | 18. Potential underground water tanks to Town Square |
| 8. Shaded seating areas with mix of clear trunk trees and Piccabeen Palms to retain views | ● Bicycle racks |
| 9. Pergola / climbing plants with opportunity for heritage interpretation / public art | ● Wayfinding signage |
| 10. Flexible space / seating area / lookout point | ● Integrated art opportunity |

Design Principles

- Retain existing paving and steps to frontage of heritage shops
- Minimise impact to existing Memorial Clock, heritage paving and retaining wall
- Maximise open space area with single pedestrian ramp layout (no switch-back)
- Clear pedestrian sight lines and navigation
- Feature steps leading up to the town square and heritage shops from Main St
- Pergola / climbing plants with opportunity for heritage interpretation / public art
- Mixture of Piccabeen Palm and shade tree planting to retain significant views

Future detail design stage

- Explore options to maximise soft surfaces, shade and greenery in the Town Square
- Explore options for integration of 7 Senses design principle



Note

1. This Masterplan identifies high level conceptual design and functional areas of the Town Square. The detail design of priority streetscape areas is scheduled for 2016/2017 with construction in 2017/2018 (subject to future funding allocation).
2. The Palmwoods Memorial Hall land is owned by the Department of Natural Resources & Mines (DNRM) and managed by the Palmwoods Memorial Hall Association.

4.6 Town Square Activation - Cross Sections



Town Square
Normal daily function



SECTION AA
Town Square - Normal daily function

Scale 1:100 @ A0



ELEVATION BB
Anzac Memorial - Existing

Scale 1:150 @ A0



Town Square
Event space during temporary road closure

- Flat events area
- Marquee stalls
- Creative spaces
- Pop-up events
- Family friendly
- Flexible spaces
- Outdoor dining



SECTION AA
Town Square - Event space during temporary road closure

Scale 1:100 @ A0



ELEVATION BB
Anzac Memorial

Scale 1:100 @ A0

Note:
The Anzac Memorial is managed by the Palmwoods and District RSL and the Palmwoods Memorial Hall Association.



4.7 Town Square Activation - Inspirational Images

The Town Square is designed to be a vibrant and flexible space for community driven events and activation. Flexible spaces allow for temporary and pop-up uses that invite open-ended interactions, spontaneity, exploration, discovery and connection.

Street activation / tourism potential
Town Square events such as markets, festivals or outdoor cinema can promote the visitor and tourism potential of Palmwoods. The diverse people and culture, country town atmosphere, heritage character and sustainable lifestyle can create a point of difference as a key destination and gateway to the hinterland.

Pop-up events - '7 Senses' example
The 7 Senses Street Day is a national event to demonstrate the importance of sensory engagement in daily life. Streets can be places that engage our 7 senses and in doing so create healthier and happier communities that include people of all abilities and wellness, and cultivate activity and play. Opportunity exists to hold similar pop-up events within the Town Square (refer to website www.7senses.org.au).

Flexible seating
During street events flexible seating areas can provide opportunities to invite conversations, build relationships between adults and children; children and children; and adults and adults.

Street activation / tourism potential
(during temporary road closure)



Pop-up events - '7 Senses' example
(during temporary road closure)



Flexible seating
(during temporary road closure)



4.8 Town Centre Activation

Community Actions

Community driven events and participation will help support a vibrant and activated town centre. The following table outlines community ideas that could be considered for implementation by the community with council support.

Idea	Action	Stakeholders
7 Senses Day	Annual event to promote street activation prior to future construction of the Town Square: <ul style="list-style-type: none"> Promotion of 7 Senses design approach Town Square detailed design phase 	<ul style="list-style-type: none"> Palmwoods Progress Association Palmwoods Memorial Hall Association Local business and property owners Local papers, websites and social media
Palmwoods Anzac Memorial Project	Community driven project and investigation of potential grant opportunities and funding models for the Palmwoods Anzac Memorial including: <ul style="list-style-type: none"> Ultimate vision for Anzac Memorial (usable flat area, seating and landscaping) 	<ul style="list-style-type: none"> The Palmwoods Memorial Hall land is owned by the Department of Natural Resources & Mines (DNRM) and managed by the Palmwoods Memorial Hall Association
Palmwoods Memorial Hall Improvements	Community driven project and investigation of potential grant opportunities and funding models for improvements to the Palmwoods Memorial Hall including: <ul style="list-style-type: none"> Activation to southern edge of Memorial Hall Potential future hall information centre 	<ul style="list-style-type: none"> The Palmwoods Memorial Hall land is owned by the Department of Natural Resources & Mines (DNRM) and managed by the Palmwoods Memorial Hall Association
Beautification of toilet facility	Potential Public Art Community Project requiring submission and approval by Council. Community-led projects may include: <ul style="list-style-type: none"> Public Art Community Project / Artistic signage to toilet block wall Garden bed planting or climbing trellis structure to front of toilet block wall Combinations of the above 	<ul style="list-style-type: none"> Palmwoods Progress Association Palmwoods Memorial Hall Association Sunshine Coast Council
Heritage Walk	Community driven project and investigation of potential grant opportunities and funding models for Heritage signage and trail. Refer to councils WALK Sunshine Coast Heritage Trail example project in Buderim.	<ul style="list-style-type: none"> Palmwoods Living History Society Palmwoods Progress Association Palmwoods Memorial Hall Association Sunshine Coast Council
Parking	Community to encourage car parking change management actions including: <ul style="list-style-type: none"> Potential signage and village car parking pamphlet to increase awareness of all public and private car parking opportunities Promote business owners and staff to park away from priority car parks 	<ul style="list-style-type: none"> Palmwoods Progress Association Local business and property owners Local papers, websites and social media
Existing community initiatives	Continue to support a vibrant and activated town centre with existing community and local business initiatives	<ul style="list-style-type: none"> Palmwoods Progress Association Palmwoods Memorial Hall Association Palmwoods Living History Society Palmwoods and District RSL Palmwoods Bowls Club Inc Palmwoods/Woodbye Lions Club Inc Local business and property owners Local papers, websites and social media

(Page left intentionally blank)



5.0 Character Palettes



5.1 Regional Ecosystems

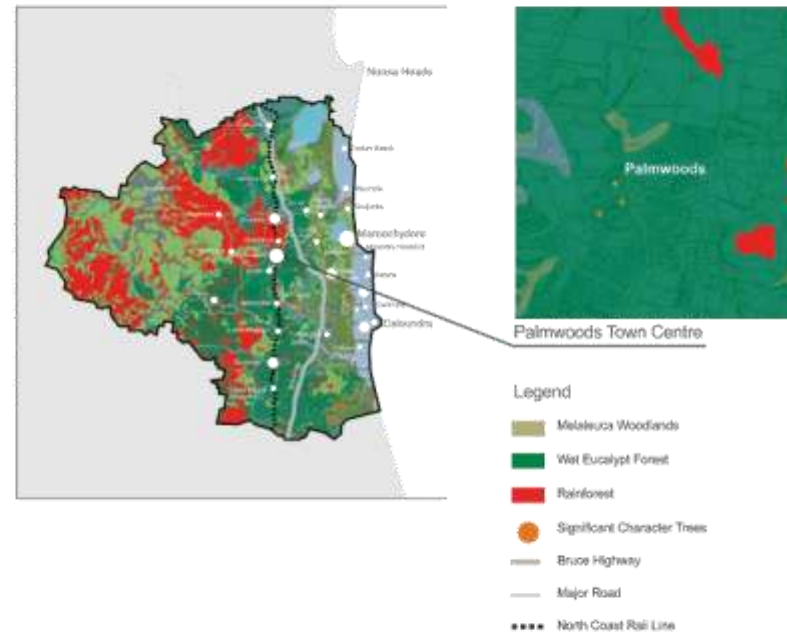
Planting Themes

The Palmwoods town centre traverses a range of vegetation types including Melaleuca Woodlands, Wet Eucalypt Forest and Rainforest with Piccabeen Palms (Source: Department of Environment and Heritage Protection, DEHP).

Street planting will contain predominantly native species providing habitat corridor links. Street tree and garden bed planting to be informal and natural in style, planted in large garden bed areas avoiding tree grates.

Stands of the Piccabeen Palm are located throughout Palmwoods, significant in the naming of the town. Opportunity exists for mixed planting of shade trees and Piccabeen Palms with clear trunks to retain views.

Kolora Park contains significant stands of Blackbutt (Eucalyptus pilularis) and provides a sense of arrival when travelling west bound from the Woombye - Palmwoods Road. The waterway edges located at lower elevation display a natural predominance of Melaleuca wetland species. Significant character trees are also located on Fewtrell and Hill Streets.



5.2 Planting Palette - Indicative

Trees

Archontophoenix cunninghamiana	Pisonium Palm
Borbonia chinensis	Lemon-scented Myrtle
Casearia acuminata	Edmund Gaidbord
Casearia melaleuca	Blue Berry Ash
Eucalyptus plicata	Blackbutt
Fraxinus australis	Queensland Maple
Grevillea bursifera	Yinka Oak
Hebebe pendula	Tulwood
Lopholaimium cordatum	Bush Box
Scaevola taccada	Great Weeping Lily Pilly
Thamnosia laurina 'Lucious'	Water Gum - Kanooka

Shrubs

Anethum 'Blazing Beauty'	Blazing Beauty
Azalea minor 'Aly's Magic'	Dwarf Lily Pilly
Banksia integrifolia 'La Petite'	Dwarf Banksia 'La Petite'
Callistemon 'Great Balls of Fire'	Great Balls of Fire
Callistemon 'White ANZAC'	White ANZAC
Melaleuca palmyra	Walteria (green & red)
Melaleuca thymifolia	Thyme-leaved Honey Myrtle
Melaleuca viridula 'Little John'	Dwarf bottlebrush
Phoradendron 'Xmas'	Xmas
Phoradendron 'swampy'	Walteria Phoradendron
Trochostema 'Jules'	Dwarf Trochostema

Feature Plants

Alpinia caerulea	Native Ginger
Asplenium australasicum	Birds Nest Fern
Conyza rotata (green & red form)	Broad Leaf Palm Lily

Ground Covers / Grasses / Climbers

Anethum dactylota	Nidium, Midgenberry
Dioscorea grandiflora	Large Wini Ili
Grevillea 'Coopers Cascade'	Coopers Cascade
Grevillea 'Sings Mt Tambora'	Grevillea 'Mt Tambora'
Jurinea 'Jackie'	Blaze Jasper
Lamprolaima 'Nara'	Nara™
Lamprolaima 'Nara'	Cheek Me! Bush
Pandanus 'Southern Belle'	Blosser of Beauty
Tillandsia 'velocis'	Society Gerts
Trochostema 'jamesrobes Trochour'	Thickly Star James
Vitis hybridus	Native Violet



Note

1. The planting palette is indicative only requiring detail design development and internal approval by council.
2. Refer to following table for potential edible plants, bush tucker and sensory species requiring further investigation during the detail design stage.



5.3 Edible Plants / Bush Tucker / Sensory Species - Indicative

Summary of potential edible plants requiring further investigation

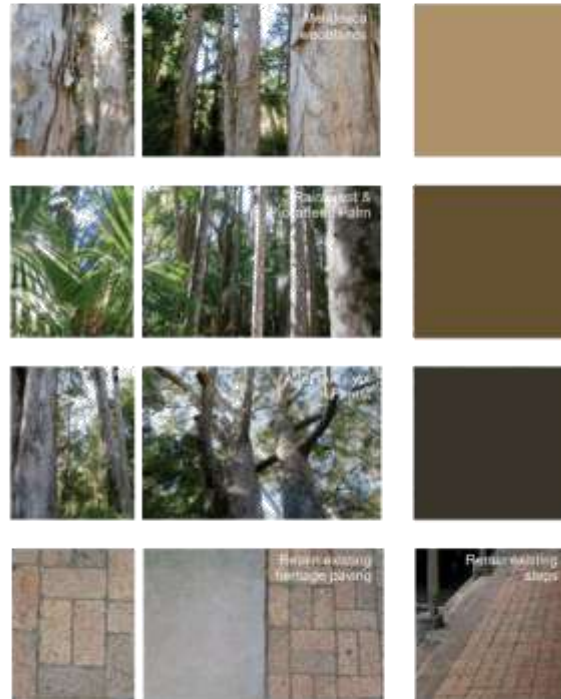
BOTANICAL NAME	COMMON NAME	HEIGHT	ORIGIN	NOTES
SHRUB				
<i>Alpinia caerulea</i>	Native Ginger	3m	Eastern Australia	Produces fragrant white flowers, which attract birds, followed by long lasting round blue fruit. Fruits & roots have a refreshing lemon/ginger taste and are edible.
<i>Austromyrtus dulcis</i>	Midyim, Midgenberry	1m	East coast from central New South Wales to northern Queensland	The fruits are berries containing 3-9 pale brown seeds. They are white and covered in small blue black spots, giving the fruit a mauvish appearance. The fruit are edible and have a sweet taste.
<i>Carissa ovala</i>	Currant Bush	1-2m	East coast from Cairns to north-eastern NSW	Berries are edible, but only when fully ripe; they have a sweet flavour, but the milky sap of this plant – and its unripe fruit – is poisonous, as typical for the Apocynaceae.
<i>Davidsonia pruriens</i>	Davidson's plum	1-6m	North east Queensland and southwards to north-eastern New South Wales	The tree is cultivated to a limited extent for its sour fruit, which is used to make jam, sauces, cordial and wine.
<i>Melastoma Affine</i>	Blue Tongue	2m	Queensland	Flowers followed by blue-black fruit with a sweet, edible flesh which stains the mouth.
<i>Pipturus argenteus</i>	Native Mulberry	1-6m	North east Queensland to eastern New South Wales	Fruit is whitish, fleshy and mulberry-like.
<i>Rubus parvifolius</i>	Native Raspberry	1m	Eastern Australia	Semi deciduous, perennial shrub with scrambling, prickly stems. The red fruit is pleasantly flavoured and can be eaten out-of-hand or used in sauces and jams.
SMALL TREE				
<i>Citrus australis</i>	Native Lime	6m	Queensland	Edible fruits are spherical or slightly pear-shaped, 25–50 mm across, with a thick green or yellow skin and pale green pulp.
<i>Eugenia reinwardiana</i>	Beach Cherry	2-6m	Northern Queensland	The tree is cultivated to a limited extent for its edible sweetish fruit that is often eaten out-of-hand, used to flavour drinks and candies, or as a preserve.
<i>Ficus fraseri</i>	White Sandpaper Fig	6-15m	New South Wales and Queensland	The rounded figs are 1 to 1.5 cm long and start out yellow in colour, maturing to orange-red between May and February in the species native range. They are edible, but insipid.
<i>Microcitrus australasica</i>	Finger Lime - Grafted	2-5m	South east Queensland and northern NSW	The finger lime has been recently popularized as a gourmet bushfood. The fruit juice is acidic and similar to a lime, used for marmalade, pickles and dried as a flavouring spice.
<i>Pouteria eerwah</i> (<i>Planchonella eerwah</i>)	Black Plum	4-10m	South eastern Queensland	The species name is derived from Mount Eerwah near Eumundi in Queensland. The dark red-purple to black fruit are oval to globular.
<i>Syzygium oleosum</i>	Blue Lilly Pilly	4-15m	North east Queensland	The fruit can be eaten freshly picked from the tree or cooked.
LARGE TREE				
<i>Backhousia citriodora</i>	Lemon Myrtle	10-15m	South eastern Queensland	The common name reflects the strong lemon smell of the crushed leaves. Used in the native foods industry for the leaf and culinary use.
<i>Macadamia integrifolia</i>	Smooth-shelled Macadamia	20m	South-eastern Queensland	Fruiting varieties are normally grafted on <i>M. tetraphylla</i> rootstock. 'Kakes' and 'Keauhou' are two Hawaiian varieties grown in Australia.
<i>Planchonella Australis</i>	Black Apple	10-12m	Queensland and New South Wales	Masses of black, plum-like fruit containing red flesh and attractive shiny brown seeds
<i>Syzygium anisatum</i>	Aniseed Tree	45m	New South Wales	Contains an aromatic leaf that has an essential oil profile comparable to true aniseed.
<i>Syzygium australe</i>	Brush Cherry	18m	Coastal regions in Queensland and New South Wales	The pleasantly sour fruit are also eaten fresh or cooked. The fruit can be used to make jams and jellies.
<i>Syzygium Luehmannii</i>	Small Leaved Lilly Pilly	15m	Near Cairns in tropical Queensland	Ornamental tree for shelter and shade. The dense nature of the foliage makes it suitable for hedging and topiary. Use the tasty fruit for jams.
<i>Syzygium crebrinerve</i>	Purple Cheri	45m	Queensland	Fruit flesh is unpalatable to humans, being dry and tasteless, but is eaten by many rainforest birds
<i>Sterculia quadrifida</i>	Peanut Tree	7-10m	North east Queensland	Seed pods are orange outside and orange or red inside when ripe. These pods contain up to 8 black seeds that are edible and taste like raw peanuts.

5.4 Materials Palette - Inspirational Images

Summary

The surrounding natural environment and country town character provide inspiration for the materials palette. The existing heritage paving and steps to the Main Street shops are to be retained. The palette will aim to complement the existing, with further material suppliers and test panels to be finalised during the detail design phase.

Surface Finish Inspiration



Materials Inspiration



Note
Materials palette is indicative only requiring detail design development and internal approval by council.

5.4 Materials Palette - Inspirational Images

Queenslander Architecture

Palmwoods unique 'tin and timber' character of the town and surrounding neighbourhood is dominated by Queenslander architecture. The Queenslander is defined primarily by architectural characteristics of climate-consideration including raised vertical stumps, veranda spaces and pitched roof. The characteristic corrugated iron roofs could withstand torrential rains and cyclonic winds. Timber was typically used for weatherboard cladding and simple architectural detailing.

Existing Character



Fencing and Signage

Fencing and signage character seeks to reflect the traditional Queensland and Australiana style. The use of natural materials such as timber, steel and stone aim to reseed and not compete with the unique Queenslander architecture.

Fencing Character



Pedestrian Signage



NOTE: Review options for country style signage and detailing

Interpretive Signage



Community Notice Board



Palmwoods Memorial Hall

The Palmwoods Memorial Hall contains significant areas of Victorian style detailing. This ornate steel detailing and white fencing should be maintained around the RSL Memorial.

RSL Memorial Character



Note

Materials palette is indicative only requiring detail design development and internal approval by council.



5.4 Materials Palette - Inspirational Images

Public Art / Story Telling

Public art and story telling can contribute to the vitality, character and identity of Palmwoods as well as enhancing the community's sense of place.

The 'Stories of Palmwoods' will guide future themes for a public art brief and possible interpretive projects. Creative opportunities will be strongly influenced by the key place making themes:

- Local Heritage Places
- Natural environment and sustainable living
- Vibrant and diverse community and culture

Types of public art

Public art may comprise of stand alone artworks or may be incorporated into built form, infrastructure, or open space and can be:

- Integrated into the design of the built or natural environment or within functional infrastructure
- Literary, visual, acoustic, multi-media, interactive, craft or design
- Interpretive art, where the art describes, educates and comments on issues, events or history
- Ephemeral art, which is intended to be a temporary installation

Creative Places



Pergola / Greening Walls



Seating

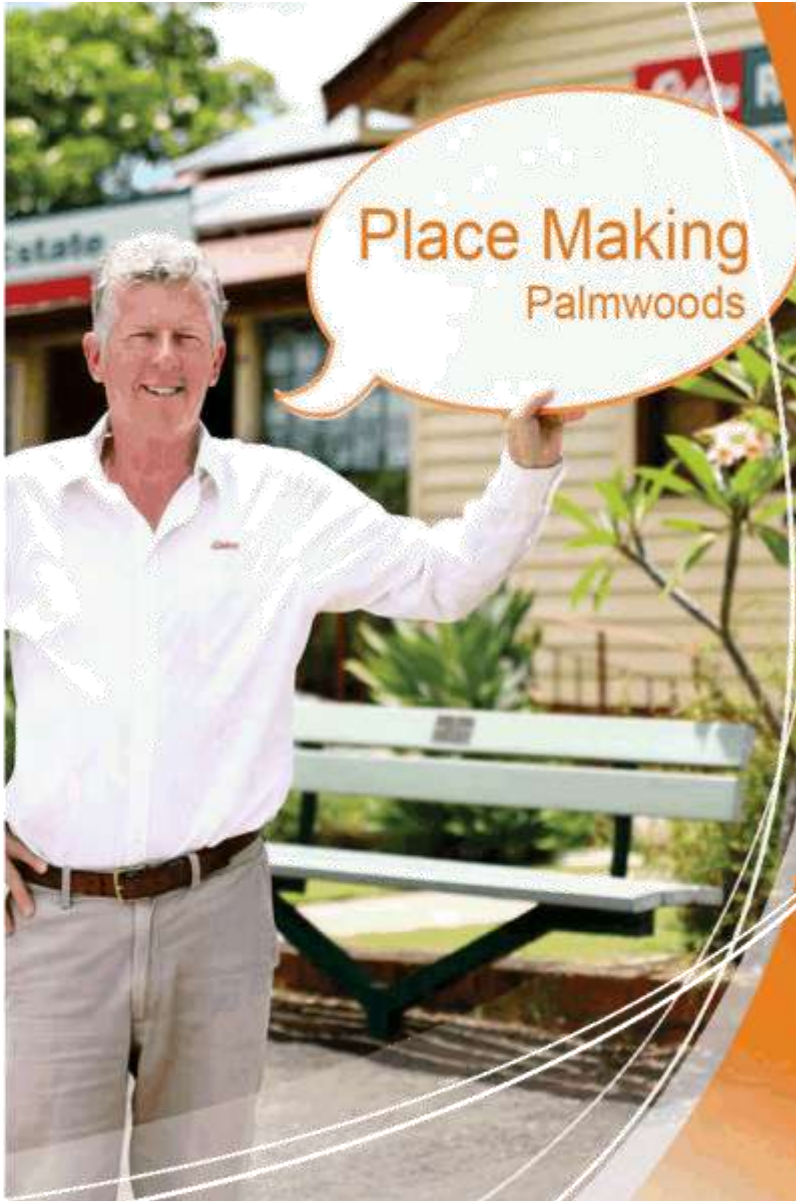


Note
 Materials palette is indicative only requiring detail design development and internal approval by council.

(Page left intentionally blank)



6.0 Implementation Plan



6.1 Implementation

This Masterplan provides the blueprint for development of the public domain, ensuring continuity of the open space and streetscape environment. The Masterplan will be implemented in a staged approach through future public and private investment projects.

Council Projects

The Place Making Palmwoods Public Domain Masterplan is to be delivered through a staged process of detail design and construction delivery of priority works to occur between 2016 - 2018 (subject to councils budget approval process).

2016/2017 - Detailed Design

- Confirm construction priority area(s) relevant to budget available
- Detailed Design and Construction Documentation of priority area(s)

2017/2018 - Construction

- Construction of priority streetscape works \$2.5million (2017/18 Financial Year - subject to council budget approval process)
NOTE: approx \$2.0M construction budget

Development Assessment and Conditions

The Masterplan identifies the Primary Streetscape Treatment Area consistent with the Palmwoods Local Area Plan of the Sunshine Coast Planning Scheme 2014. Through the development application process,

opportunity exists for council to work with landowners and developers of key sites to deliver contributed assets that contribute to the setting, character and identity of Palmwoods.

The requirement to provide streetscape improvements in accordance with council requirements is a common condition of development approval (depending on the scale, location and setting of the proposed development). The Masterplan provides locally relevant and tailored design guidance to inform streetscape treatments proposed or required to be undertaken as part of the development application process.

State Government Projects

The Queensland Infrastructure Plan 2011, outlines future rail infrastructure investment including the following planned project within Palmwoods:

- North Coast Rail Line Duplication and Palmwoods Station Upgrade

Partnership Opportunities:

The Place Making Palmwoods Public Domain Masterplan will support future grant applications and provide the framework for potential future partnerships and joint initiatives between the Sunshine Coast Council, Queensland State Government, Federal Government, the community and the private sector:

Potential State Government Grants

- South East Queensland Cycle Network Program (50/50 Contribution)



- Local Government Grants and Subsidies Program
- Black Spot Program (Department of Transport and main Roads, TMR)

Potential Service Provider Partnerships

- Community Powerline Enhancement Program (50/50 Contribution)

Partnership Opportunities (State Government / Council)

- Land for potential alternative uses following Rail Corridor Upgrade (subject to future planning)
- Potential future informal gravel car park (subject to Queensland Rail)
- Traffic calming to Margaret Street (Investigate funding opportunities and partnerships with TMR - eg. Black Spot Program)
- Improved pedestrian crossing facilities to Margaret Street (Investigate funding opportunities and partnerships with TMR - eg. Black Spot Program)

Potential Intersection Improvements

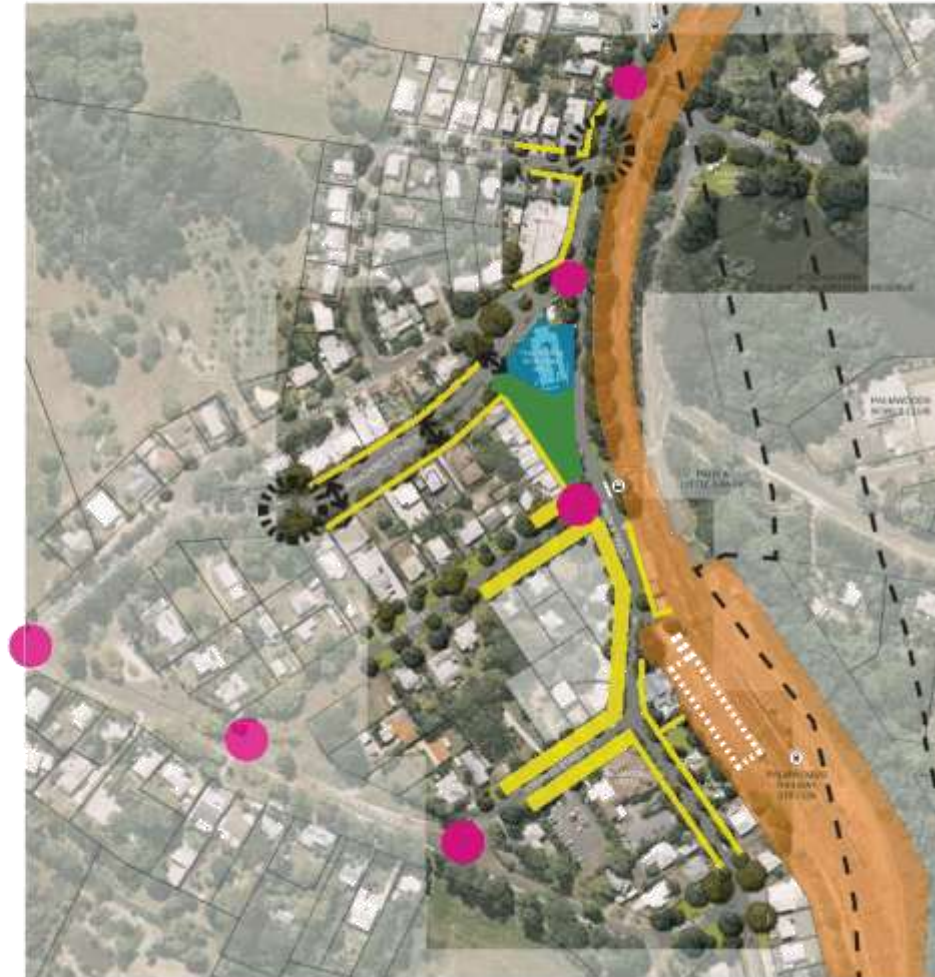
- Investigate potential funding opportunities and partnerships with State Government, council and/or the private sector

Palmwoods Memorial Hall

- Community driven project and investigation of potential grant opportunities and funding models for improvements to the Palmwoods Anzac Memorial and Hall
- NOTE: The Palmwoods Memorial Hall land is owned by the Department of Natural Resources & Mines (DNRM) and managed by the Palmwoods Memorial Hall Association

6.2 Potential Funding Sources

Implementation of the Palmwoods Public Domain Masterplan relies on both public and private investment. The adjacent plan outlines the various projects and potential funding sources from State Government, council and the private sector.



Scale 1:1000 @ A1

Legend

- Palmwoods Streetscape Improvements Council Future Capital Works Projects (subject to change)**
 - Detail Design of priority areas (Town Square)
 - 2016/17 FY Budget \$75,000
 - Construction of priority areas (Town Square)
 - 2017/18 FY Budget \$2,500,000
- Primary Streetscape Treatment Area**
 - Development Assessment and Conditions
- State Government Project**
 - Future Rail Corridor Upgrade of the North Coast Rail Line (Queensland Rail)
- Partnership Opportunities (State Government / Council)**
 - Land for potential alternative uses following Rail Corridor Upgrade (subject to future planning)
 - Potential future informal temporary gravel car park (subject to Queensland Rail)
 - Traffic calming to Margaret Street (Investigate funding opportunities and partnerships with the Department of Transport and Main Roads - eg. Black Spot Program)
 - Improved pedestrian facilities to Margaret Street (Investigate funding opportunities and partnerships with the Department of Transport and Main Roads - eg. Black Spot Program)
- Potential intersection improvements**
 - Investigate potential funding opportunities and partnerships with State Government, council and/or the private sector
- Palmwoods Memorial Hall**
 - Community driven project and investigation of potential grant opportunities and funding models for improvements to the Palmwoods Anzac Memorial and Hall

