

# Preparation of a New Planning Scheme Proposed Community Engagement Approach

September 2020



Our region.  
Healthy. Smart. Creative.

## Proposed Community Engagement Approach

The preparation of a new planning scheme is a significant and complex undertaking, particularly for a dynamic and diverse area such as the Sunshine Coast.

High population growth, multi-faceted planning issues, complex environmental and development considerations and an engaged local community all contribute to the need for a comprehensive community engagement strategy to support the new planning scheme project.

Council is committed to ensuring that the community plays a meaningful role in the preparation of the new planning scheme. Council is also keen to utilise engaging technologies and tools to build community knowledge and encourage involvement.

To achieve these, and other important project objectives, the opportunities and challenges associated with each stage of the new planning scheme project will need to be considered and planned for from a community engagement perspective.

By identifying overarching objectives, project stakeholders, possible engagement tools and

key project risks, it is intended that a Community Engagement Strategy (the Strategy) will lay the foundation for more detailed engagement plans for key stages of the New Planning Scheme Project (the Project).

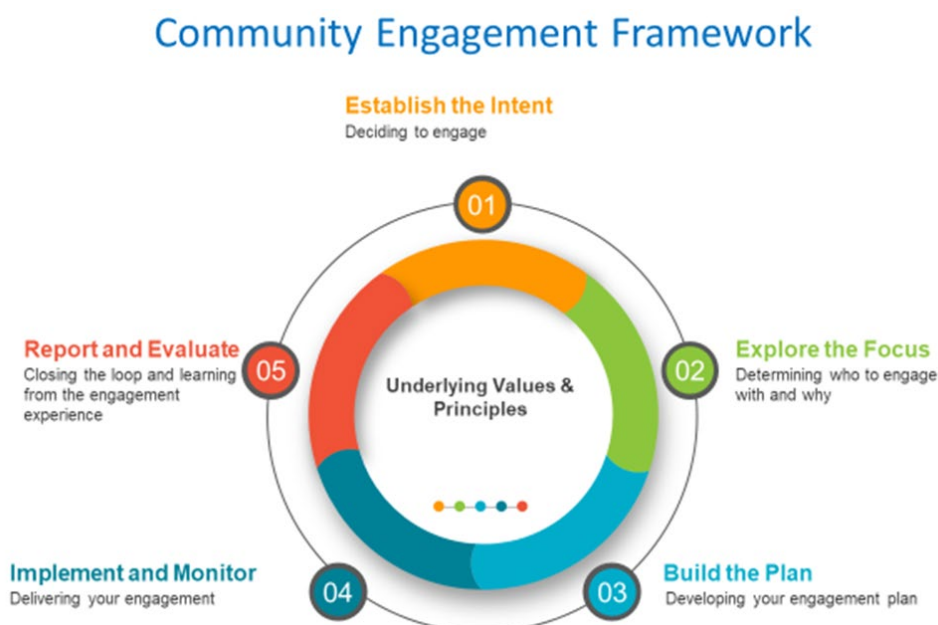
The Strategy will be prepared in accordance with the Sunshine Coast Community Engagement Framework (see **Figure 1** below). Council's approach to community engagement concentrates on a principle-based model, where engagement is:

- inclusive;
- innovative;
- well-planned;
- collaborative; and
- transparent.

These guiding principles will inform the preparation of the Strategy.

Upon Council's approval to prepare and progress the New Planning Scheme Project, Council will inform the community where they can find information and subscribe for updates on future community engagement opportunities (such as Stages 4 and 8 in **Figure 2** below). The timing of community engagement activities is yet to be determined and will be dependent upon progress of earlier Project stages.

Figure 1: Sunshine Coast Community Engagement Framework



The Strategy will recognise and go beyond the requirements legislated under the Queensland Planning Framework to ensure that community engagement activities across all stages of the Project successfully support the preparation of the new planning scheme and meet the expectations of the community and project stakeholders.

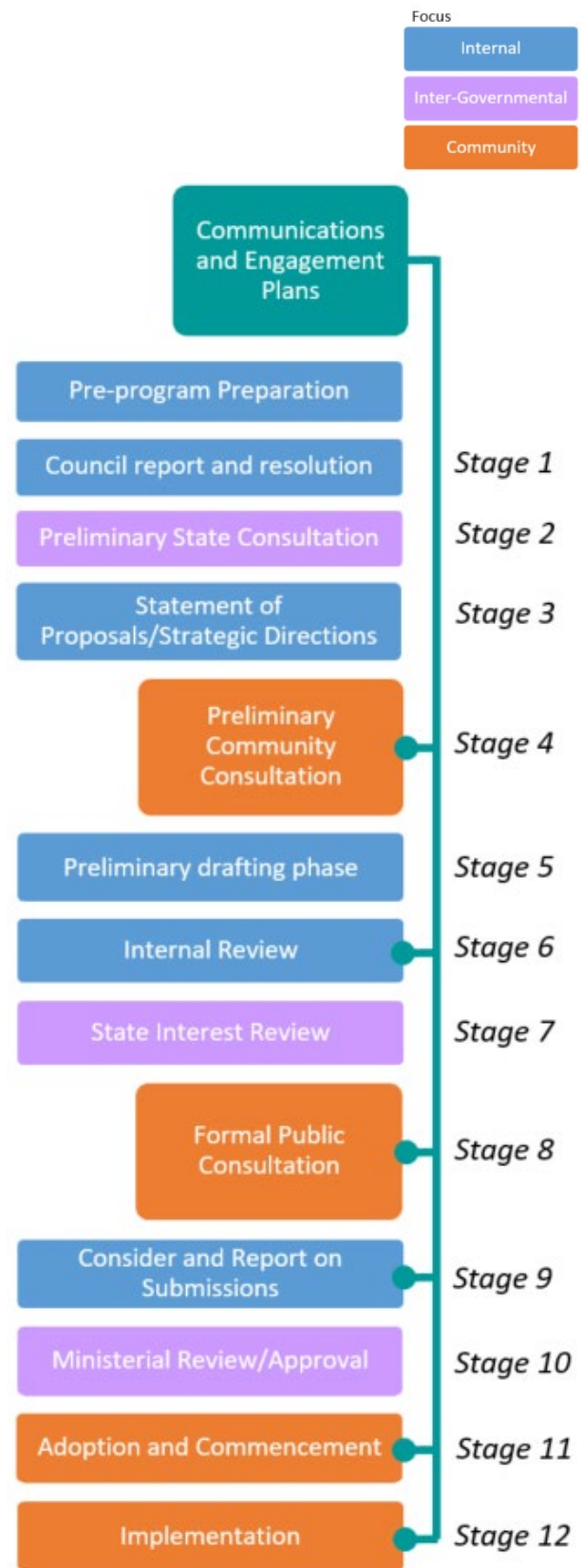
Engagement activities within Project stages may range from the relatively simple to the more complex and resource intensive. Key components/activities are anticipated to include:

- the formation of a Community Reference Group (CRG) early in the Project to provide key input and guide the community engagement process;
- the Preliminary Community Consultation stage, seeking feedback on the proposed strategic policy directions for the new planning scheme and aligned with other major Council strategies and projects (for example, the Sunshine Coast Mass Transit Project and the Coastal Hazard Adaptation Strategy);
- the Formal Public Consultation stage on the content of the proposed planning scheme;
- the preparation and implementation of technology-based engagement tools (for example, visualisations, on-line tools and websites);
- the development of project branding and preparation of communications material to support community engagement activities and correspondence; and
- the formation of internal technical working groups and external reference groups to provide technical input and feedback on new planning scheme content.

These and other key components will be identified throughout the Strategy within the context of the Sunshine Coast Community Engagement Framework.

It is anticipated that the Community Reference Group (once formed) will assist in the design of the Community Engagement Strategy and guide the preparation of detailed Community Engagement Plans for key community-focused stages of the Project.

**Figure 2: Overview of New Planning Scheme Project Stages**





[www.sunshinecoast.qld.gov.au](http://www.sunshinecoast.qld.gov.au)

[mail@sunshinecoast.qld.gov.au](mailto:mail@sunshinecoast.qld.gov.au)

**T** 07 5475 7272 **F** 07 5475 7277

Locked Bag 72 Sunshine Coast Mail Centre Qld 4560

