



Environment and Liveability Strategy Annual Report 2017-2018

Delivering a pathway to a healthy environment
and liveable Sunshine Coast



Acknowledgement of Country

Sunshine Coast Regional Council acknowledges the traditional Country of the Kabi Kabi Peoples and the Jinibara Peoples of the coastal plains and hinterlands of the Sunshine Coast and recognise that these have always been places of cultural, spiritual, social and economic significance. We wish to pay respect to their Elders – past, present and emerging – and acknowledge the important role Aboriginal and Torres Strait Islander people continue to play within the Sunshine Coast community.

Council is committed to ongoing communications and consultation with the Traditional Owners and the broader Aboriginal and Torres Strait Islander community of the Sunshine Coast in the implementation of the strategy.

© Sunshine Coast Regional Council 2009-current.

Sunshine Coast Council™ is a registered trademark of Sunshine Coast Regional Council.

www.sunshinecoast.qld.gov.au

mail@sunshinecoast.qld.gov.au

T 07 5475 7272 F 07 5475 7277

Locked Bag 72 Sunshine Coast Mail Centre Qld 4560

Acknowledgements

Council would like to acknowledge the contributors of a number of images in this document, including:

A. Bowen - Alexandra Headland (front cover), J. Hill – Summit of Mt Ngungun (front cover), P. Evans – Silvereeye (page 3), O. Foley – Crookneck (page 5), C. Stewart – Eastern Yellow Robin (page 7), A. Bowen – Maroochy River (page 7), Image supplied by Baringa State Primary School – Baringa State Primary School (page 9), Stockland – Recreation park adjoining community centre (page 9), T. King – V House (page 10), R. Liniger – Osprey with fish (page 11).

Disclaimer

Information contained in this document is based on available information at the time of writing. All figures and diagrams are indicative only and should be referred to as such. While the Sunshine Coast Regional Council has exercised reasonable care in preparing this document it does not warrant or represent that it is accurate or complete. Council or its officers accept no responsibility for any loss occasioned to any person acting or refraining from acting in reliance upon any material contained in this document

Reference document

This document should be cited as follows:
Sunshine Coast Regional Council. 2018.
Sunshine Coast Environment and Liveability Strategy Annual Report 2017-2018.



Strategic Planning Award

Winner at the Parks and Leisure Australia Regional Awards (Queensland) in May 2018.

“The strategy exemplifies the importance of an integrated approach to long-term planning and demonstrates how a successfully integrated planning and policy framework ensures the provision and management of sports and recreation facilities are intrinsically linked to achieve sustainable outcomes.”



Message from the Mayor

We are building a healthy, smart and creative region here on our Sunshine Coast, and we know there are many opportunities to strengthen our commitment to our natural environment and liveability.

The adoption of the Environment and Liveability Strategy (the strategy) in September 2017 and its implementation is a great example of our council's forward thinking.

The strategy focuses on how our natural environment will be preserved and enhanced while enabling a good quality of life for all of us in an accessible and well-connected built environment.

Council recognises that our environment is one of our greatest assets, and we intend to keep it that way.

After all, our natural environment is one of our most defining features of our region and central to our values and way of life.

This annual report provides a snapshot of some of the outcomes delivered across a number of the strategy's Transformational Actions over the last 12 months.

We are proud of these significant achievements and look forward to continuing the region's progress as we deliver a healthy environment and liveable Sunshine Coast.



Mayor Mark Jamieson

Environment and Liveability Strategy

The Environment and Liveability Strategy was adopted in September 2017 and this Annual Report showcases the implementation progress that has been made.

What is the purpose of the strategy?

The strategy provides long-term strategic direction to guide growth and shape the Sunshine Coast for future generations to 2041.

It focuses on the natural environment and how it can be preserved and enhanced, as well as the liveability of the region - enabling a good quality of life for all residents and supporting a strong economy in an accessible and well-connected built environment.

Why is it needed?

In this rapidly changing world there will be many challenges and opportunities for our much-loved Sunshine Coast way of life - increasing population, changing climate, economic growth and emerging technologies

The strategy is needed to help navigate our way through these challenges while harnessing the opportunities. Its integrated and long-term approach to guiding

development of the Sunshine Coast offers clarity, inspiration and direction.

The strategy is a forward looking document and seeks to do things differently.

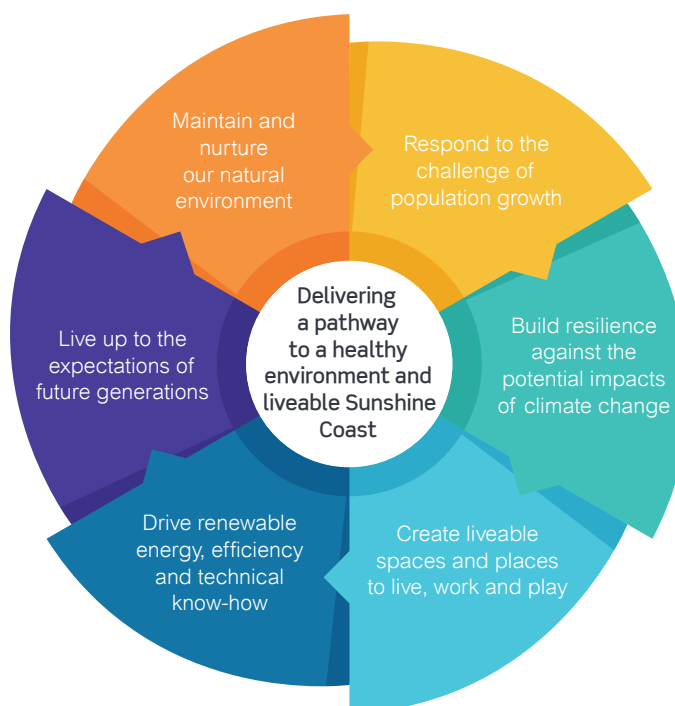


Figure 1: Delivering a healthy environment and liveable Sunshine Coast

Our council services contributing to a liveable Sunshine Coast

- **100** community venues support connected, active and healthy communities
- **22 tonnes** of marine debris and waterway litter removed
- **1.5 million** visitors to our local libraries
- **800 hectares** of recreation parks
- **1st** local government in Australia to build a utility scale solar farm
- **2920 metres** of natural and constructed shoreline protection works
- **2500 hours** of volunteer time in recreation trail development
- **21** workshops and presentations held at Mary Cairncross Scenic Reserve
- **11** council funded programs supporting active and healthy communities in our parks



Annual performance measures

We track and monitor the effectiveness of the strategy through five performance measures.

Target	Baseline	2017-2018	Outcome
A resilient region shaped by clever planning and good design			
1 No loss of the Regional Inter-urban Break in its current extent – 32,034 ha	32,034 ha	32,034 ha	No change to the current extent
Protection and enhancement of our natural assets and distinctive landscapes			
2 Hectares of land per 1000 residents acquired through Environment Levy for conservation and preservation purposes (maintained at 9.6 ha per 1000 residents)	9.6 ha per 1000 residents	10.69 ha per 1000 residents	A total of 405 ha acquired
Responsive accessible and well managed assets and infrastructure			
3 Hectares of land per 1000 residents for sport and recreation purposes (maintained at 5 ha per 1000 residents)	4.74 ha per 1000 residents	4.43 ha per 1000 residents	A total of 44 ha secured
Transitioning to a sustainable and affordable way of living			
4 Renewable energy capacity increased	124 MW	162 MW	Increase of 38 MW
A reputation for innovation and sustainability			
5 Council's greenhouse gas emissions reduced	0.46 tCO ₂ e per resident	0.45 tCO ₂ e per resident	Decrease of 0.01 tCO ₂ e per resident

ha – Hectares
 MW – Megawatts
 tCO₂e – Tonnes of carbon dioxide equivalent

“The Environment and Liveability Strategy articulates the myriad ways in which our region is changing, so we better understand the future we need to design for. We can then create buildings and urban environments that help enrich the lifestyle, environment and sense of community that we all cherish on the Sunshine Coast even as the world around us changes.”

Phil Smith, Architect and Urban Designer
 President of the Creative Alliance





A snapshot of progress

The strategy provides an integrated and targeted approach to effect change. This ensures we'll achieve our vision for a healthy environment and liveable Sunshine Coast.

THE NATURAL ENVIRONMENT 

THE ENVIRONMENT WE CREATE 

LIVING IN THE ENVIRONMENT 

A combination of key council services and programs, performance measures, targets and Transformational Actions assists us to implement the strategic directions and monitor progress.

Twenty six Transformational Actions make a significant contribution to the implementation and are achieved through 120 specific tasks (see below – status of tasks 2017-2018).

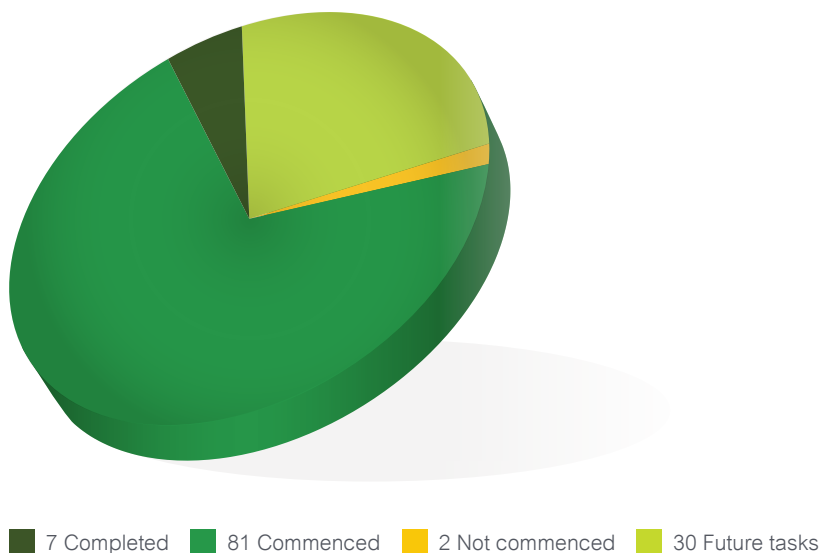


Figure 2: Status of tasks 2017-2018. Based on Part B (September 2017 edition)





The Natural Environment Case studies



Transformational Action 6: Connecting nature and people

Connecting our valued habitat areas to support our native flora and fauna and providing the community with opportunities to participate in conservation and to experience the natural environment.

Environment Levy protects a further 405 hectares of conservation land

Council invested more than \$7 million into the acquisition of 405 hectares of conservation lands through the Environment Levy Land Acquisition Program.

The program is an important management tool that assists to expand the conservation estate, protect regional biodiversity, enhance ecological connectivity and increase the resilience of our biodiversity to climate change.

We purchased nine properties across Maroochy, Mary and Mooloolah river catchments. This resulted in the expansion of five existing council environment reserves and increased council's protected estate.

Through this program, council also seeks to connect people and nature by purchasing lands that support nature-based recreational activities.

More information on these acquisitions can be found in the 2017-2018 Environment Levy Annual Report.



Transformational Action 11: A step ahead

Providing for the reinstatement of vegetation and habitats that locally offset the unavoidable vegetation clearing required for our critical public infrastructure.

Expanded landfill delivers almost 40 hectares of new habitat

Council has proactively purchased more than 200 hectares of strategically located lands to create and protect new habitat areas through rehabilitation and natural regeneration activities.

The strategy recognises there will be a loss of native vegetation to support the infrastructure and services required for a growing Sunshine Coast population.

Council has acquired a property through the Environment Levy that is adjacent to the Eumundi Conservation Park in Yandina Creek and has committed to rehabilitating almost 40 hectares of habitat.

This compensates for the approximate 4.8 hectares of native vegetation and habitat that will be removed for the expansion of the existing Nambour Landfill to ensure our future communities are provided with the long-term provision of resource recovery and waste disposal facilities.





Transformational Action 16: Managing our invasive plants and animals

Providing a collaborative, effective and efficient response to the management of invasive plants and animals to reduce their social, economic and environmental impacts.

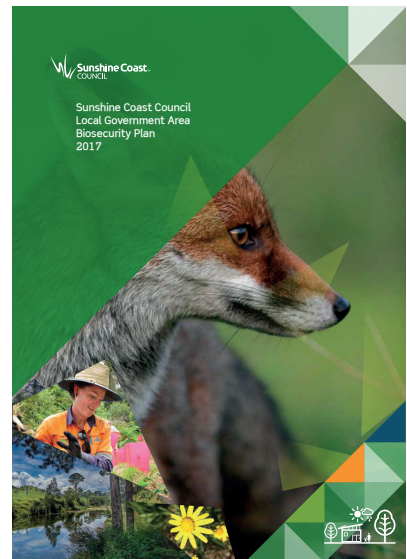
A strategic approach to invasive plant and animal management

Invasive plants and animals have the potential to cause significant impacts on the Sunshine Coast’s natural assets – our bushland and aquatic environments, fertile and productive agriculture areas and growing community and residential areas.

The *Sunshine Coast Council Local Government Area Biosecurity Plan* (the plan) provides a strategic approach to manage invasive plants and animals.

It was developed in partnership with community representatives and establishes a framework for the co-operative and co-ordinated management of priority invasive plants and animals. The plan also defines management responses most likely to succeed, with available resources, through a catchment-scale management approach which:

- recognises the different communities, land uses and pressures in each catchment
- allows management responses to be more relevant and targeted
- integrates and complements other catchment management and planning activities
- fosters community ownership and implementation of the plan.





The Environment We Create

Case studies



Transformational Action 17: Greening our neighbourhoods

Delivering cool and shady streets and places to connect and enhance our neighbourhoods and promote biodiversity, resilience and community wellbeing.

Transforming the Sunshine Coast to a greener cooler place

The *Sunshine Coast Street Tree Master Plan* provides a framework to guide future street tree plantings across the region. It details why trees are important for our future, communicates the region's street tree planting priorities and provides guidance for locations, layouts and species to use.

The Street Tree Master Plan helps council, industry and the community to create a sustainable and greener future.



Transformational Action 3: Housing for the future

Demonstrating that we have the capacity in our urban footprint to accommodate a range of sustainable and affordable living options.

Housing Benchmark for the Sunshine Coast

The inaugural *Sunshine Coast Housing Benchmark Report 2017* provides a point in time snapshot of housing provision. The report is a reference document used to monitor and measure progress in achieving improved housing solutions for all. The report will be reviewed by council every five years.

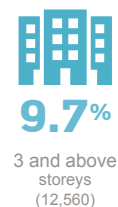
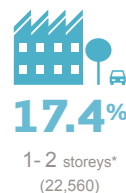
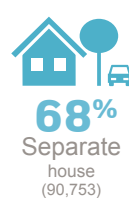
The report monitors dwelling numbers and housing type, residential density, mortgage and rental costs and household types.

The report explains how housing products on the Sunshine Coast are changing. It is available on our website.

It's a handy resource, providing consistent housing information to guide planning for appropriate housing to meet the needs of the diverse community.



Dwelling Type



*excluding separate houses



Transformational Action 15: Great places and spaces

In partnership with industry and community develop a network of contemporary places and spaces that provide and support opportunities for creative, community and active experiences.

Innovative partnership delivers new Community Hub

The planning and delivery of the Baringa Community Hub pilot project, a Queensland first, is a major milestone for the new community of Baringa (Caloundra South, Aura). An innovative partnership approach between council, State Government and the developer, Stockland has enabled a more effective and efficient delivery model, promoting colocation and shared community facilities.

Well ahead of normal timeframes the Community Hub delivered a range of community facilities:

- state school operational in January 2018, with stage 2 underway
- multi-purpose school hall including robotics and engineering space and a music room
- district community centre and meeting place (due for completion in 2019)
- neighbourhood sports park with three full-sized soccer fields and a clubhouse.

The Community Hub is well located with the town square, park and skate plaza, creating a great community space in close proximity to the future District Activity Centre.

A partnership investment of over \$30 million to create a great place and support opportunities for learning, community and active experiences.

The Community Hub will be managed by a governance arrangement ensuring ongoing access to facilities.





Living in the Environment Case studies



Transformational Action 5: Being prepared

Proactively planning for the potential impacts of climate change and natural hazards to build the resilience of the region.

Building resilience to climate change

Council is developing a Coastal Hazard Adaptation Strategy to understand coastal hazards that are likely to impact on our natural and built environments as climate change intensifies.



Over the last 12 months we delivered the first two phases of this eight-phase project with funding support from the Queensland Government and Local Government Association of Queensland. These two critical phases enabled council to consolidate knowledge on coastal hazards, and to understand industry-leading adaptation practices. With this insight, we'll use evidence-based planning to manage risks along our coastline and look forward to working with the community on our approach.



Transformational Action 2: A better built environment through sustainable design

Embedding sustainable, liveable and affordable design into our built environment that celebrates the subtropical lifestyle of the Sunshine Coast.

Catalysing sustainable design through demonstration and conversation

The inaugural Sunshine Coast Open House celebrated sustainable design, quality architecture and our region's unique heritage as part of the Sunshine Coast's 50-year celebrations.



Thirty of the region's most distinctive examples of architecture were opened to the public, with over 2,800 visitors and 40 volunteers taking part. Walking tours were hosted in Nambour and Caloundra and a photography competition encouraged visitors to share their experiences.

As part of the Sunshine Coast Open House activities, the council co-ordinated the Sunshine Coast Architecture – Past, Present and the Future panel discussion. The panel of six, were a mix of highly regarded architects offering a diversity of perspectives across multi generations.

The event explored 50 years of architecture on the Sunshine Coast and fostered critical conversations about dealing with the pressures of climate change, population growth and maintaining the quality of the Sunshine Coast lifestyle and distinct environments.

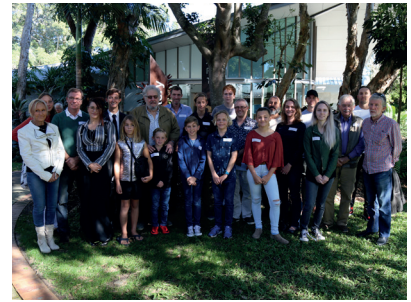


Transformational Action 18: An involved community

A major engagement and marketing program to inspire and empower the community to value the environment and play their part in a liveable, sustainable and resilient future.

Seeing and sharing our community's love for our region

Our community plays an active role in creating, protecting and celebrating our natural environment and Sunshine Coast lifestyle. Our Sunshine Coast Environment and Liveability Photography Award invited the community to share their interpretation of competition themes: environment, liveability, resilience and sustainability. We received over 600 entries from people of all ages, and were proud to have esteemed nature-based photographer Steve Parish as a judge and presenter of the awards, held at the Caloundra Regional Art Gallery.



Transformational Action 19: Changing our ways

Transitioning the Sunshine Coast to a more sustainable, resilient and low carbon way of living.

Partnering with our community to create a sustainable future

We held many events throughout the year to unite the community and celebrate sustainable, resilient and low carbon ways of living. Through these events we facilitated important conversations and created awareness about the sustainable changes we each can make in our own lives, and as a community.

Highlights of our events program include:

- Cleantech Effect 2017 – over 200 delegates attended this conference, exhibition and networking event. Keynote speakers included Dr Keith Suter (Futurist) and Peter Maddison (Grand Designs Australia)
- Living Smart Love your leftovers campaign – in partnership with the local 4 Ingredients team, the community learned how to reduce food waste and save money
- Fabric – Slow Fashion, Artful Living – a wide range of provocative and interactive experiences stimulated critical conversations about sustainability, fashion and other considered lifestyle choices
- Living Smart #byosunshinecoast campaign – the campaign encourages people to choose reusable alternatives rather than single-use options. Ambassadors for the campaign include the Sunshine Coast Lightning netball team.





2018-2019: The year ahead

In 2018-2019 we'll build on the success of the inaugural year of the strategy whereby maintaining our momentum and continuing the delivery of the 26 Transformational Actions and key council services. For a full suite of actions and tasks visit our website.

Six showcase Transformational Actions



Expanding the green space

Securing and activating space for future generations through an accelerated strategic land program to improve conservation, flood mitigation, and sport and recreation opportunities.



Better buildings through sustainable design

Embedding sustainable, liveable and affordable design into our built environment that celebrates the subtropical lifestyle of the Sunshine Coast.



Being prepared

Proactively planning for the potential impacts of climate change and natural hazards to build the resilience of the region.



Finding the happy medium

Create a street-scale demonstration project to showcase sustainability, good urban design and the benefits of medium density living in partnership with government and industry.



Protecting the Regional Inter-urban Break

Protecting the Regional Inter-urban Break in perpetuity to secure the environmental, production and recreation values.



An involved community

A major engagement and marketing program to inspire and empower the community to value the environment and play their part in a liveable, sustainable and resilient future.

