



Don't break **the break**

Protecting our Sunshine Coast
Regional Inter-urban Break
for future generations



The Sunshine Coast Regional Inter-urban Break is a critical major green space that plays an important role in preserving our region's distinctive character, identity and valued lifestyle.

Often referred to as the gateway to the Sunshine Coast, the Regional Inter-urban Break separates us from the Greater Brisbane area.

This important green space extends from the hinterland and rural areas surrounding the iconic Glass House Mountains in the west to the picturesque RAMSAR-listed Pumicestone Passage and coastline in the east.

It contributes significantly to our natural environment and unique landscapes, which are the foundations of our Sunshine Coast way of life.

It also has significant cultural heritage values and First Nations identity.

With its close proximity to major urban centres, the Regional Inter-urban Break is one of South East Queensland's main places where people can enjoy land and water-based recreation activities, including:

- ▣ bushwalking and scenic views
- ▣ rock climbing
- ▣ adventure racing
- ▣ mountain biking
- ▣ four-wheel driving
- ▣ swimming and surfing
- ▣ boating and fishing
- ▣ camping
- ▣ kayaking and canoeing.

Our Vision

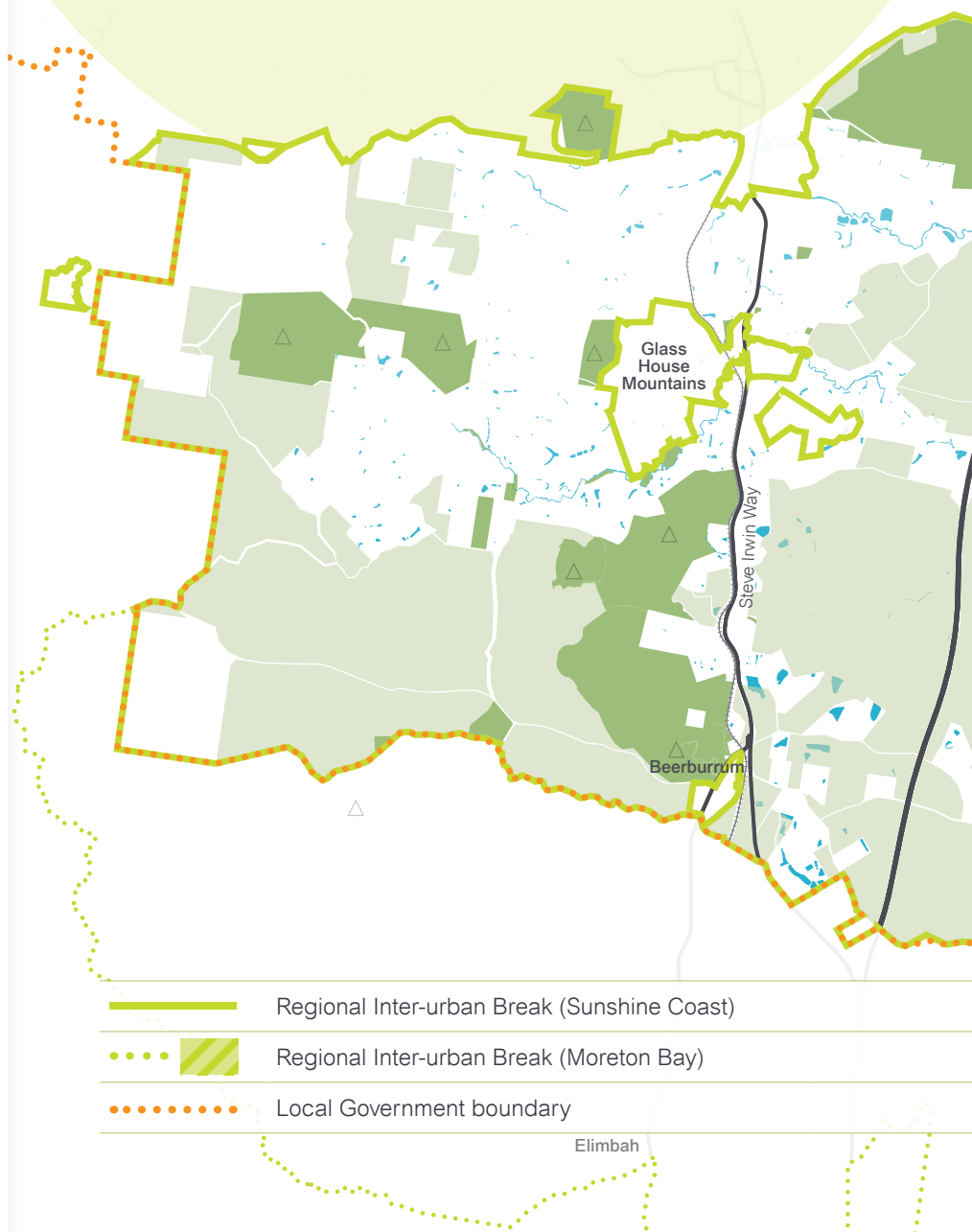


A protected landscape of regionally significant scale, character and beauty, enjoyed by all. Extending from coastline to hinterland, it has unique natural, ecological, cultural heritage, First Nation identity, recreational and economic value.

It defines a green gateway to the Sunshine Coast and marks an important transition from the Greater Brisbane area.

The diversity and extent of the connected, accessible green space reinforces its role as a place of ecological conservation and rich biodiversity and a major destination for nature-based outdoor recreation and a productive landscape.

It is home to a prosperous, productive and connected community that work within and protect and promote the values of the land and its heritage.





Key facts and benefits

- ❑ Total of 63,000 hectares located across the Sunshine Coast and Moreton Bay local government areas (LGA)
- ❑ 32,034 hectares located within the Sunshine Coast LGA
- ❑ Contains nationally significant landscape of the Glass House Mountains and RAMSAR-listed Pumicestone Passage
- ❑ Contains protected areas such as National Parks, Conservation Parks and environment reserves
- ❑ Includes productive farmlands and rural townships, like Beerburrum
- ❑ Includes State Forests mostly managed for timber production (native and exotic)
- ❑ Includes significant cultural heritage places and landscapes important to our First Nation peoples
- ❑ Provides opportunities for local agricultural production and forestry, increasing food security and local employment
- ❑ Offers unique tourism opportunities to contribute to the region's natural attraction
- ❑ Is a playground for South East Queensland hosting a diverse range of outdoor recreation activities.



Managing growth sustainably



With the Sunshine Coast's growing population expected to reach just over 500,000 by 2041, we must plan for the future by securing major green spaces to protect our natural assets, respond to climatic changes and provide open spaces for people to enjoy.

Avoiding the creation of new urban development areas in major regional green spaces such as the Regional Inter-urban Break is essential to ensure these important spaces are not reduced over time, large areas meet the recreational needs of a growing population and significant environments are protected in perpetuity in recognition of their value and contribution to the region's identity and liveability.

Taking action now



Council recognises the importance of protecting the Regional Inter-urban Break in perpetuity. It is a critical major green space for the Sunshine Coast and has been identified as a priority in our long-term planning and strategic directions.

The *ShapingSEQ – South East Queensland Regional Plan 2017* already recognises the value of a Moreton Bay-Sunshine Coast inter-urban break as a non-urban area providing open space, amenity and other non-urban landscape values between major urban areas of the metro and northern sub-region. *ShapingSEQ* identifies the need to determine the area's extent and investigate mechanisms to ensure its long-term protection.

Statutory protection by legislation for the Regional Inter-urban Break is important and will signal that this landscape will continue to evolve in a way that preserves its values and delivers a healthy environment and liveable Sunshine Coast for the future.

The DECISIONS we make **today** will **IMPACT** the **future** for GENERATIONS to come.

Sunshine Coast Council acknowledges the traditional country of the Kabi Kabi and Jinibara First Nation People who are recognised Traditional Custodians in this region.



Environment
and Liveability

els.sunshinecoast.qld.gov.au

els@sunshinecoast.qld.gov.au 07 5475 7272

Locked Bag 72 Sunshine Coast Mail Centre Qld 4560



Image credits:

FRONT COVER: S. Beedle – Pumicestone Passage; A. Ward – Mount Ngungun; L. Allanson – Glass House Mountains.

PAGE 2: A. Bell – Osprey.

PAGE 3: K. Cogan – Banksia.

BACK COVER: Z. Jones – Bells Creek, Glass House Mountains; D. Prescott – Mount Ngungun.