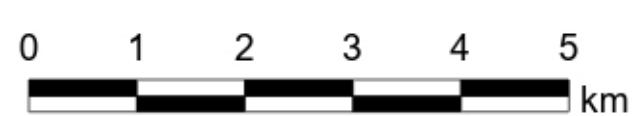


**Legend**

- Highways and Motorways
- Recent Development Area
- This area will be Extremely Dangerous
- This area will be Highly Dangerous
- This area will be Moderately Dangerous
- This area will be Low Danger



Scale: 1:70,000



Sunshine Coast council  
[customerservice@sunshinecoast.qld.gov.au](mailto:customerservice@sunshinecoast.qld.gov.au)

**Disclaimer**

While every care is taken to ensure the accuracy of this product, neither the Sunshine Coast Council nor the State of Queensland makes any representations or warranties about its accuracy, reliability, completeness or suitability for any particular purpose and disclaims all responsibility and all liability (including without limitation, liability in negligence) for all expenses, losses, damages (including indirect or consequential damage) and costs that may occur as a result of the product being inaccurate or incomplete in any way or for any reason.

Date: Thursday, 6 March 2025

A0

GDA2020