

canistrum

design : Michael Lennie

Artistic statement

Bringing ancient craft into the future public domain. Canistrum is an unfinished basket reflecting an unfinished history. With its ultra modern interior and bold colours juxtaposed against the darker tree lined landscape, who knows how Canistrum will be perceived from a distance. Or what animals and plants the visitor will see in the shallow reflection pond.

Issac Moore Park



ramp start

Design Philosophy , Materials and Construction

The Canistrum (latin for basket) is designed to be both art and a functional public toilet. Bold and vibrant colours create a striking effect against the Kenilworth Conondale Ranges' tree line.

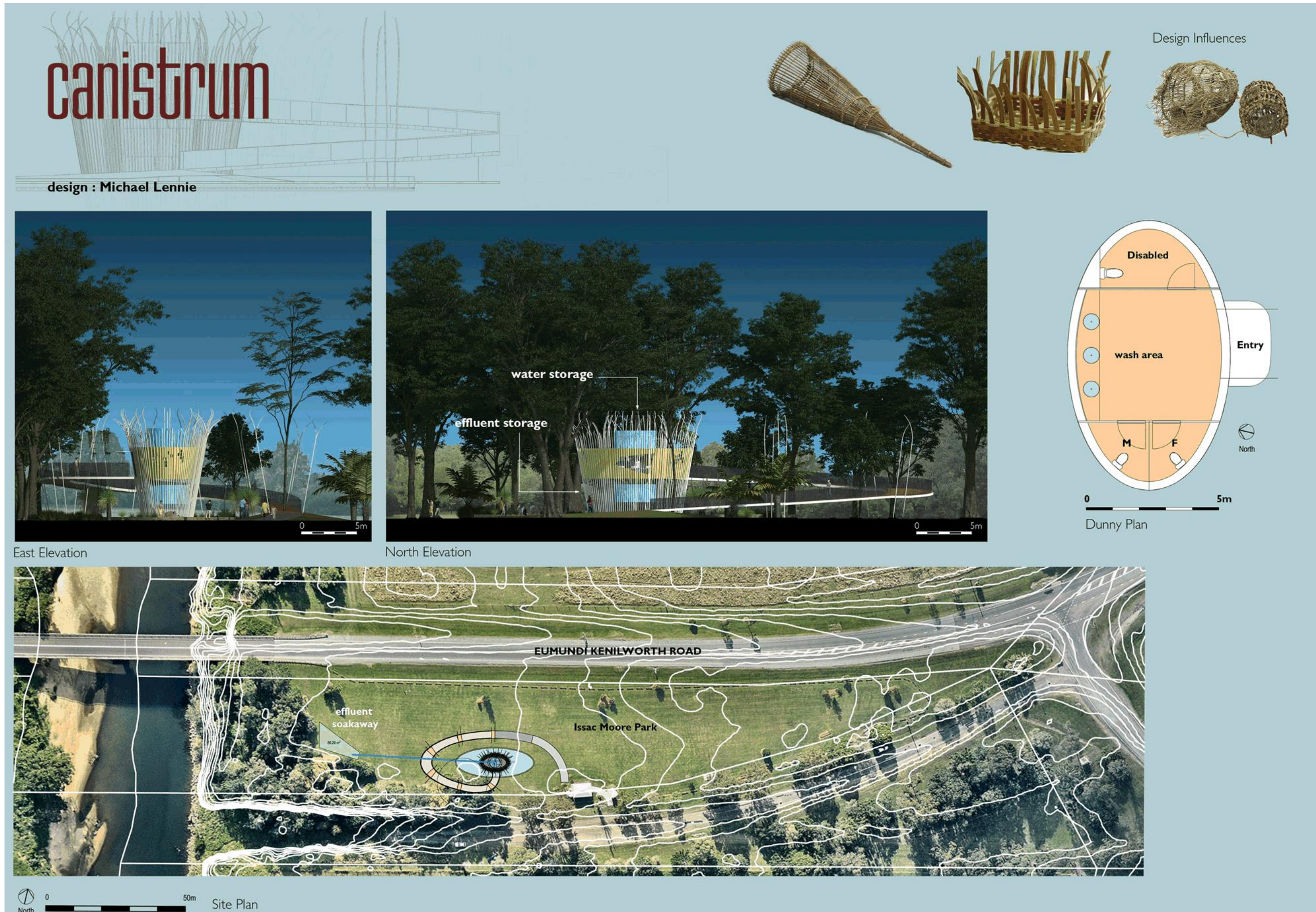
The building is constructed with powder coated steel sections with looping ends set in a large concrete base. The wall consists of powder coated aluminium sheets, curved to follow the inside of the structure. The wall sheets are connected to the structure using 200mm long separation bolts, allowing the interior to float in the frame.

The water storage tank is to be suspended above the steel frame and the effluent tank suspended below.

A wide timber ramp will rise from park level at regulation gradients of 1:14 with landings at 9m intervals. The ramps first section is comprised of the solid fill from the excavated reflection pool. The ramp circles the building providing ascending views to the countryside and building. The ramps handrail is flat aluminium sheet decorated with a laser cut leaf design.

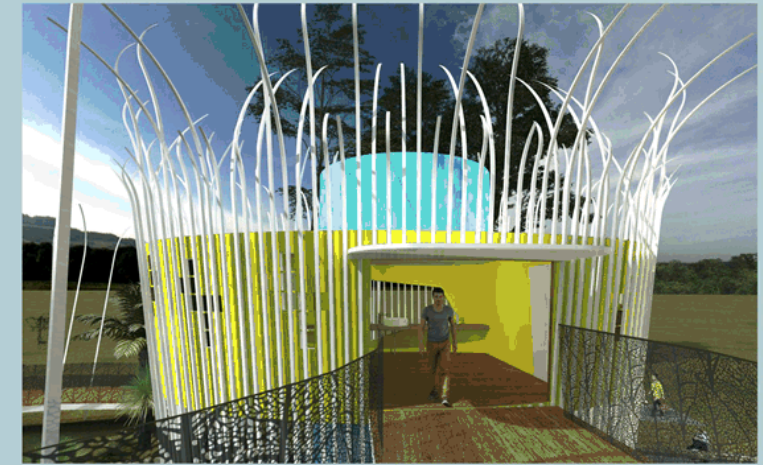
The base of the Canistrum rests inside a shallow oval shaped reflection pond surrounded by a stone wall. Like a watering hole the pool contains native aquatic plants and creates a habitat conducive for native animals such as fish, frogs and water dragons.





canistrum

design : Michael Lennie



Entry approach



Montage looking West

