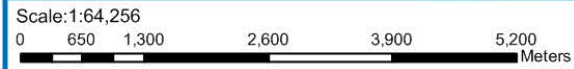


Map 1: Glass House 7 Peaks Walk/Ride Concept



Legend

- Lookout
- Mountain
- Type**
- Train Station
- Tourist Information Centre
- Food & Supplies
- Accommodation
- Toilet
- Other POI
- Current Trail Status**
- Proposed Connections
- Existing
- Federal Government
- State of Queensland
- State Reserve under control of SCRC as Trustee
- SCRC under Nomination of Trust
- SCRC owned Estate in Fee Simple



Sunshine Coast

Glass House 7 Peaks Trail Concept

All alignments are to be determined by more detailed planning & consultation, this map shows desired outcomes in terms of linkage between locations & townships.

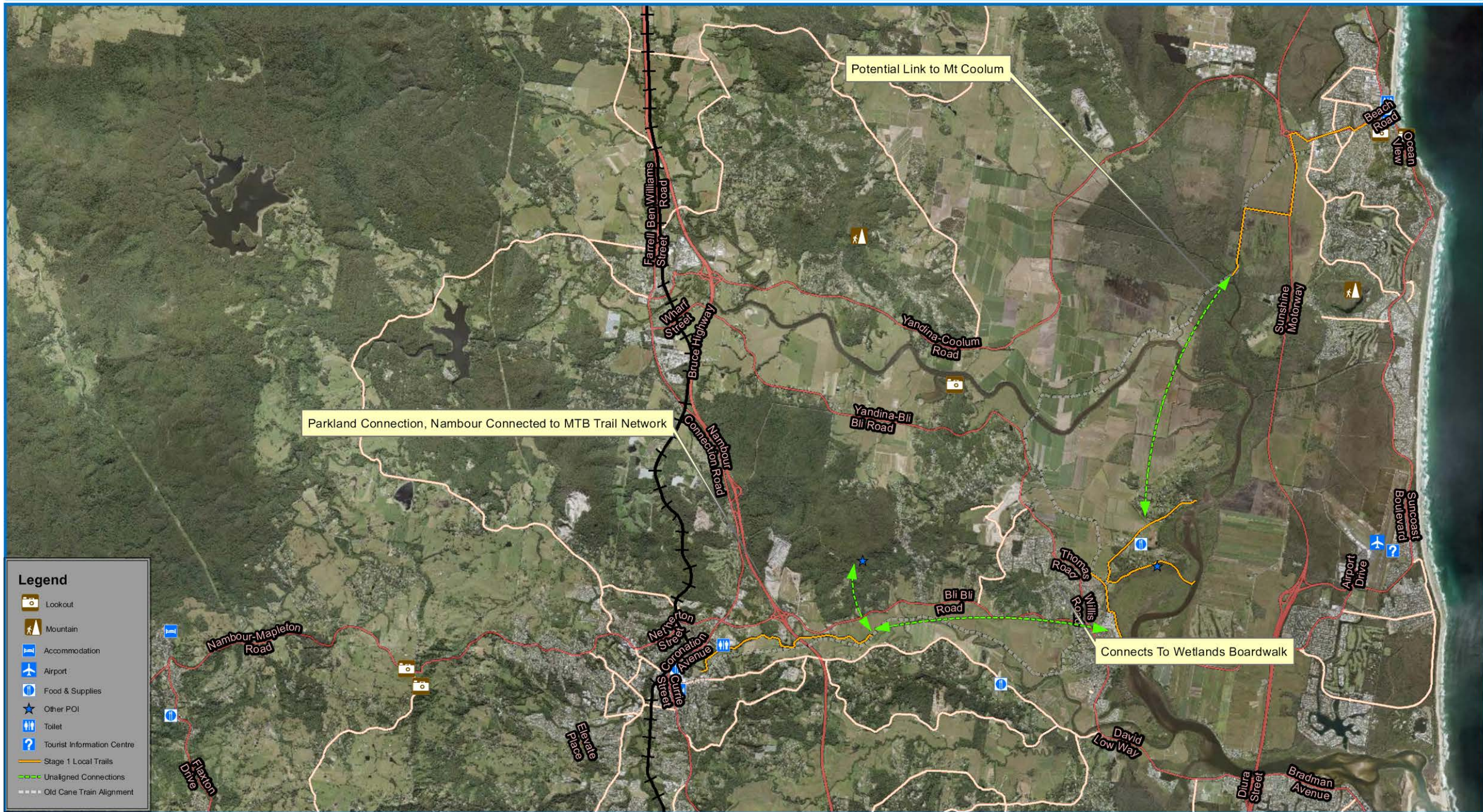
Sunshine Coast Council
 Locked Bag 72
 Sunshine Coast Mail Centre Qld 4560
 [e] mapping@sunshinecoast.qld.gov.au
 [w] www.maps.sunshinecoast.qld.gov.au
 [p] 07 5475 7272

Date: Tuesday, 21 February 2017
 Created by: KM035

Disclaimer
 While every care is taken to ensure the accuracy of this product, neither the Sunshine Coast Council nor the State of Queensland makes any representations or warranties about its accuracy, reliability, completeness or suitability for any particular purpose and disclaims all responsibility and all liability (including without limitation, liability in negligence) for all expenses, losses, damages (including indirect or consequential damage) and costs that may occur as a result of the product being inaccurate or incomplete in any way or for any reason.

© Crown & Council Copyright Reserved.
 Geocentric Datum of Australia 1994 (GDA94)

Map 2: Nambour to Coolum Core Trail



Legend

- Lookout
- Mountain
- Accommodation
- Airport
- Food & Supplies
- Other POI
- Toilet
- Tourist Information Centre
- Stage 1 Local Trails
- Unaligned Connections
- Old Cane Train Alignment



Sunshine Coast

Nambour to Coolum Main Trail Concept

All alignments are to be determined by more detailed planning & consultation, this map shows desired outcomes in terms of linkage between locations & townships.



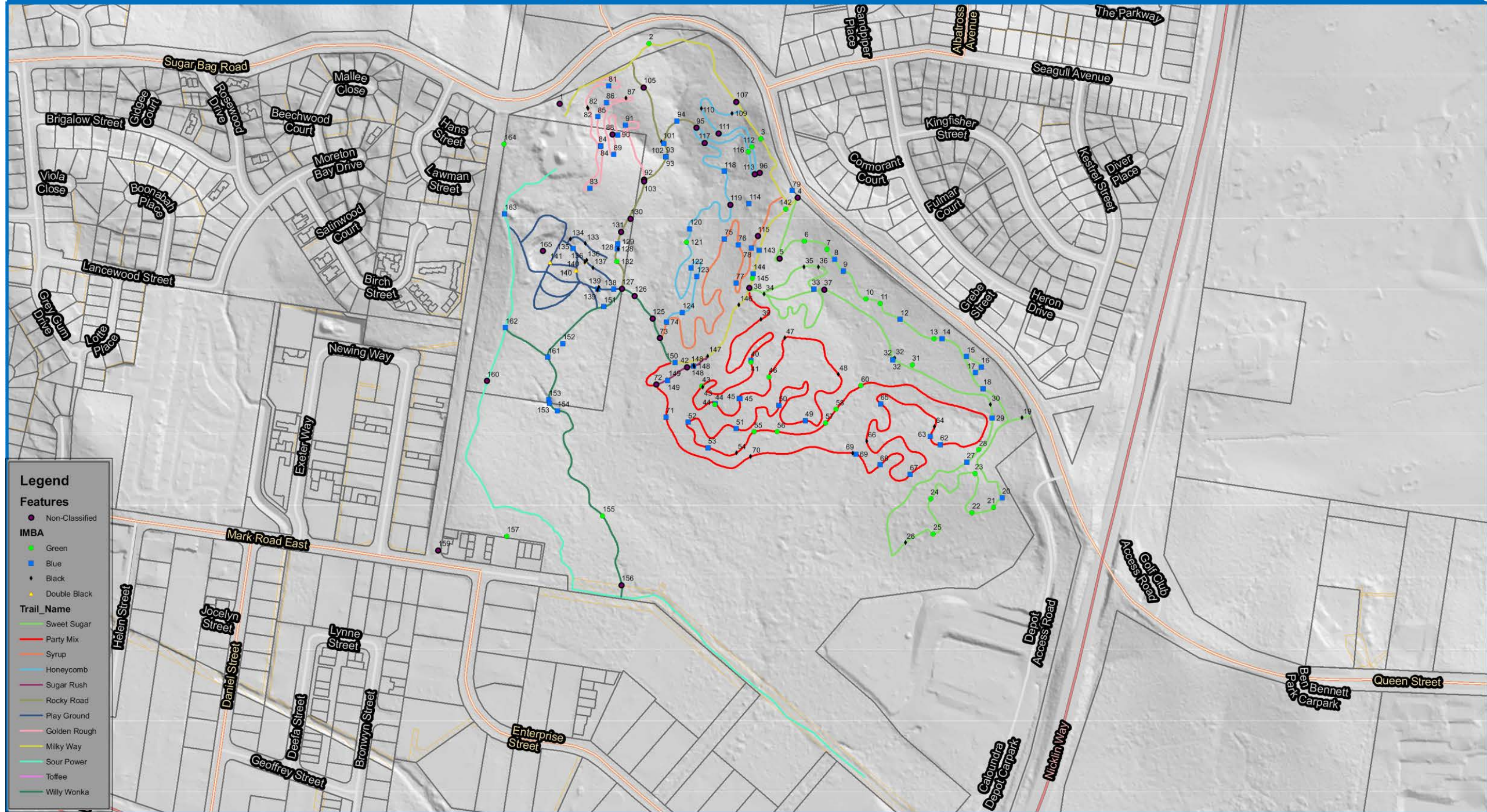
Sunshine Coast Council
 Locked Bag 72
 Sunshine Coast Mail Centre Qld 4560
 [e] mapping@sunshinecoast.qld.gov.au
 [w] www.maps.sunshinecoast.qld.gov.au
 [p] 07 5475 7272

Date: Tuesday, 21 February 2017
 Created by: KM035

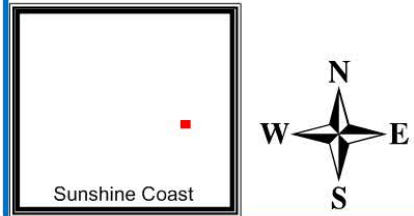
Disclaimer
 While every care is taken to ensure the accuracy of this product, neither the Sunshine Coast Council nor the State of Queensland makes any representations or warranties about its accuracy, reliability, completeness or suitability for any particular purpose and disclaims all responsibility and all liability (including without limitation, liability in negligence) for all expenses, losses, damages (including indirect or consequential damage) and costs that may occur as a result of the product being inaccurate or incomplete in any way or for any reason.

© Crown & Council Copyright Reserved.
 Geocentric Datum of Australia 1994 (GDA94)

Map 3: Sugar Bag Road Existing MTB Infrastructure



Scale: 1:4,903
 0 50 100 200 300 400 Meters



**Sugar Bag Road Town Reserve:-
 Mountain Bike Trail Network
 with features by IMBA classification.**



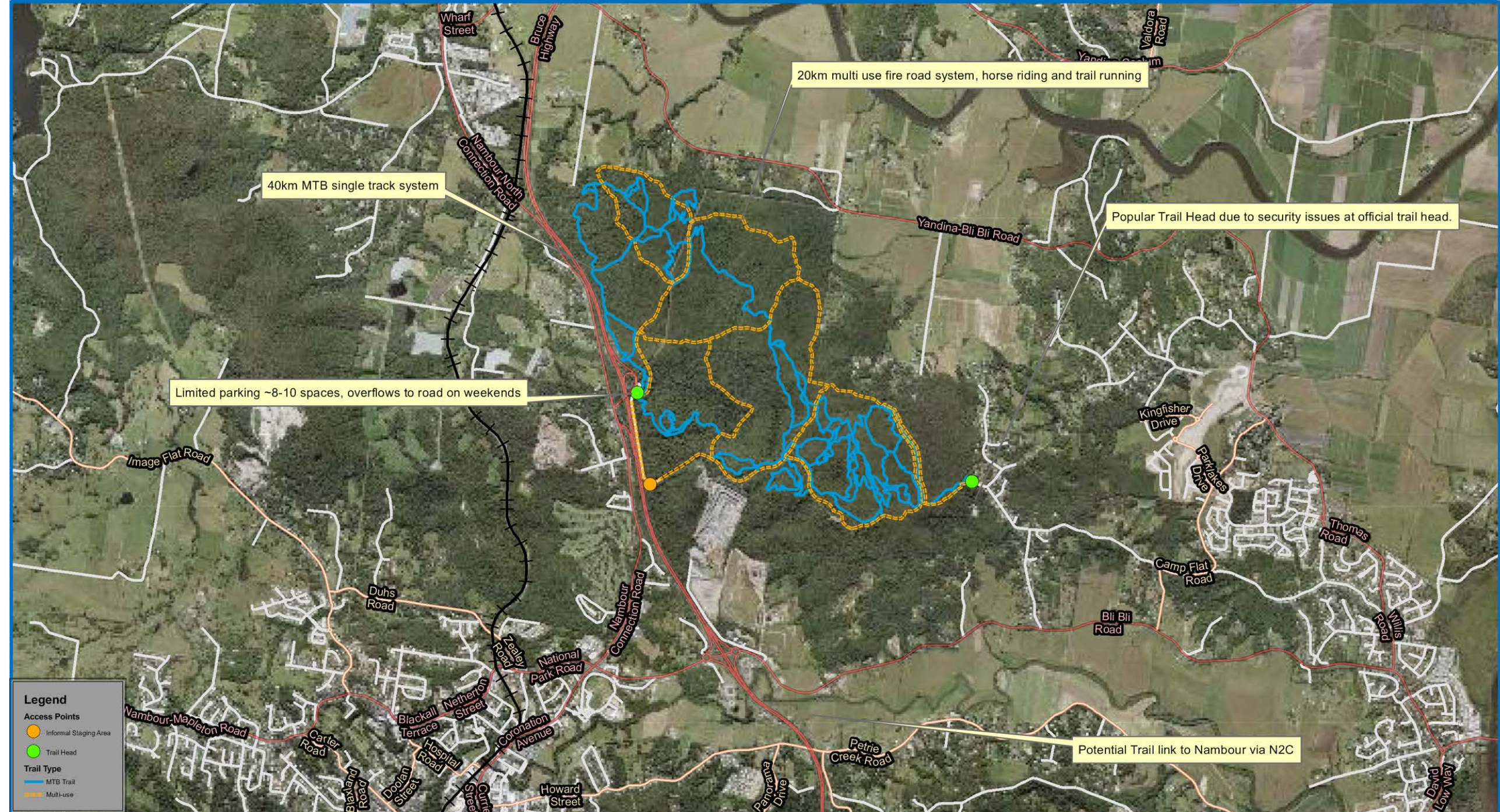
Sunshine Coast Council
 Locked Bag 72
 Sunshine Coast Mail Centre Qld 4560
 [e] mapping@sunshinecoast.qld.gov.au
 [w] www.maps.sunshinecoast.qld.gov.au
 [p] 07 5475 7272

Date: Wednesday, 1 February 2017
 Created by: KM035

Disclaimer
 While every care is taken to ensure the accuracy of this product, neither the Sunshine Coast Council nor the State of Queensland makes any representations or warranties about its accuracy, reliability, completeness or suitability for any particular purpose and disclaims all responsibility and all liability (including without limitation, liability in negligence) for all expenses, losses, damages (including indirect or consequential damage) and costs that may occur as a result of the product being inaccurate or incomplete in any way or for any reason.

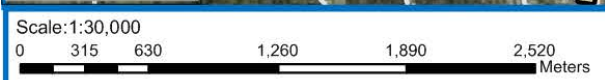
© Crown & Council Copyright Reserved.
 Geocentric Datum of Australia 1994 (GDA94)

Map 4: Parklands Regional Park



Legend

- Access Points
 - Informal Staging Area (Yellow circle)
 - Trail Head (Green circle)
- Trail Type
 - MTB Trail (Blue line)
 - Multi-use (Yellow dashed line)



Sunshine Coast

Parklands Existing Trail Map



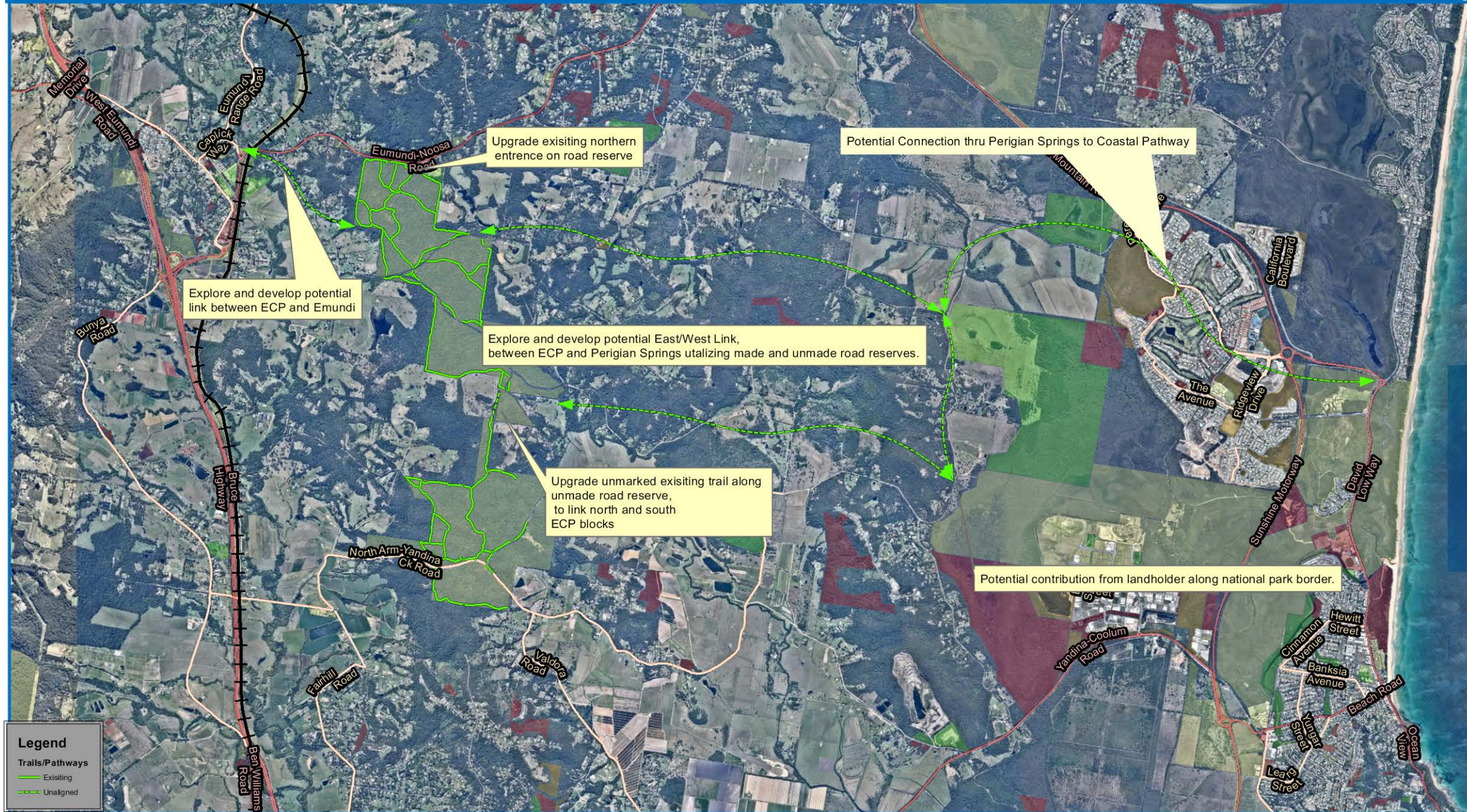
Sunshine Coast Council
 Locked Bag 72
 Sunshine Coast Mail Centre Qld 4560
 [e] mapping@sunshinecoast.qld.gov.au
 [w] www.maps.sunshinecoast.qld.gov.au
 [p] 07 5475 7272

Date: Wednesday, 1 February 2017
 Created by: KM035

Disclaimer
 While every care is taken to ensure the accuracy of this product, neither the Sunshine Coast Council nor the State of Queensland makes any representations or warranties about its accuracy, reliability, completeness or suitability for any particular purpose and disclaims all responsibility and all liability (including without limitation, liability in negligence) for all expenses, losses, damages (including indirect or consequential damage) and costs that may occur as a result of the product being inaccurate or incomplete in any way or for any reason.

© Crown & Council Copyright Reserved.
 Geocentric Datum of Australia 1994 (GDA94)

Map 5: Eumundi/Doonan Regional Recreation Trails



Legend

Trails/Pathways

- Existing
- Unaligned

Scale: 1:41,763
 0 437.5 875 1,750 2,625 3,500 Meters

Sunshine Coast

Eumundi/Doonan Recreation Trail Concepts:

All alignments are to be determined by more detailed planning & consultation, this map shows desired outcomes in terms of linkage between locations & townships.



Sunshine Coast Council
 Locked Bag 72
 Sunshine Coast Mail Centre Qld 4560
 [e] mapping@sunshinecoast.qld.gov.au
 [w] www.maps.sunshinecoast.qld.gov.au
 [p] 07 5475 7272

Date: Tuesday, 21 February 2017
 Created by: KM035

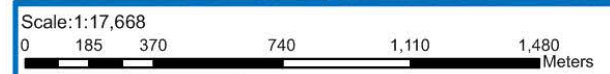
Disclaimer
 While every care is taken to ensure the accuracy of this product, neither the Sunshine Coast Council nor the State of Queensland makes any representations or warranties about its accuracy, reliability, completeness or suitability for any particular purpose and disclaims all responsibility and all liability (including without limitation, liability in negligence) for all expenses, losses, damages (including indirect or consequential damage) and costs that may occur as a result of the product being inaccurate or incomplete in any way or for any reason.

© Crown & Council Copyright Reserved.
 Geocentric Datum of Australia 1994 (GDA94)

Map 6: Lake Weyba Foreshore



Legend
Status
— Existing Access Tracks
- - - Informal Trail



Sunshine Coast

Lake Weyba Trail

This a proposed new trail to formalize existing use of an informal trail along Lake Weyba foreshore.

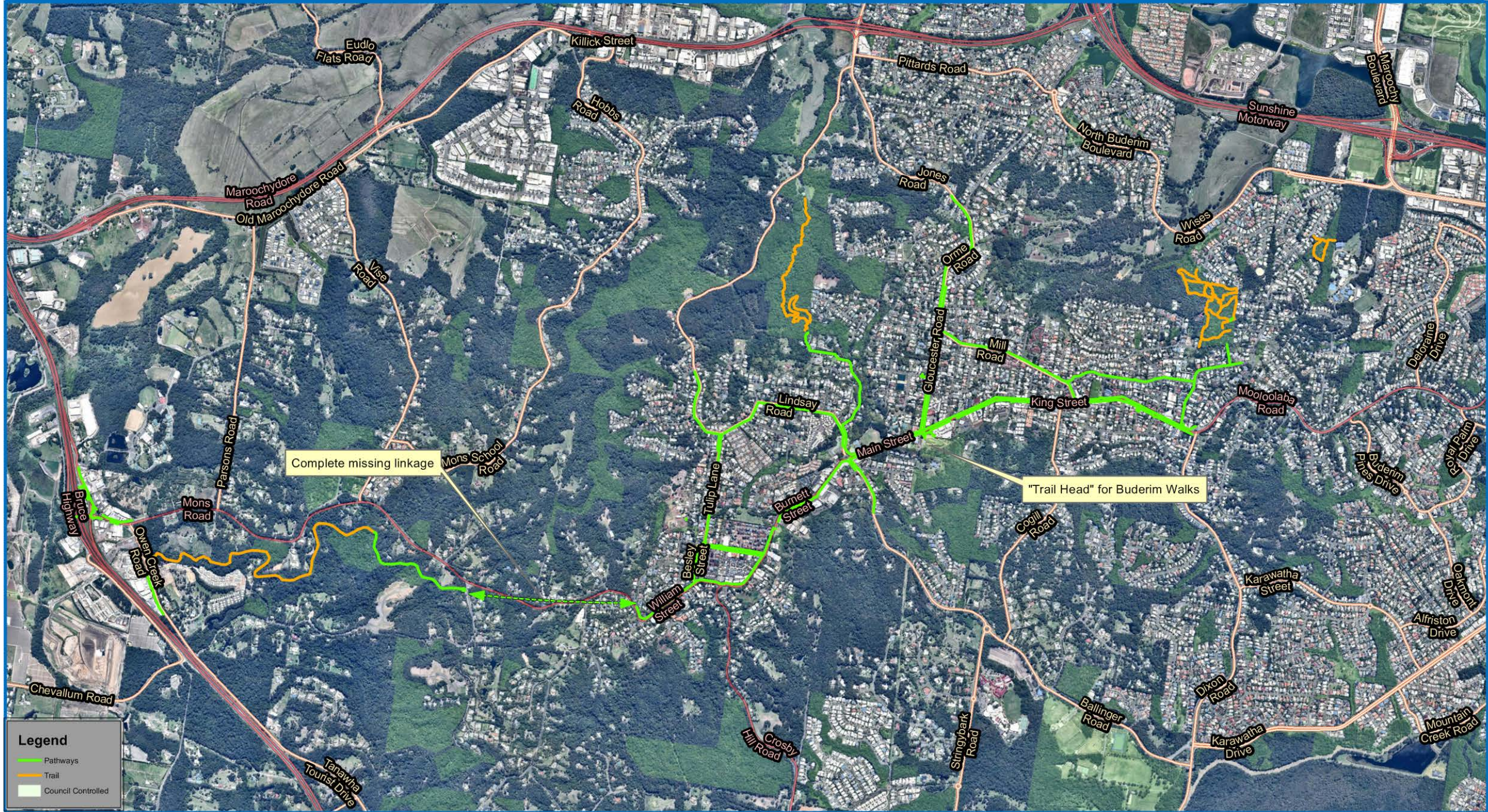
Sunshine Coast Council
Locked Bag 72
Sunshine Coast Mail Centre Qld 4560
[e] mapping@sunshinecoast.qld.gov.au
[w] www.maps.sunshinecoast.qld.gov.au
[p] 07 5475 7272

Date: Tuesday, 21 February 2017
Created by: KM035

Disclaimer
While every care is taken to ensure the accuracy of this product, neither the Sunshine Coast Council nor the State of Queensland makes any representations or warranties about its accuracy, reliability, completeness or suitability for any particular purpose and disclaims all responsibility and all liability (including without limitation, liability in negligence) for all expenses, losses, damages (including indirect or consequential damage) and costs that may occur as a result of the product being inaccurate or incomplete in any way or for any reason.

© Crown & Council Copyright Reserved.
Geocentric Datum of Australia 1994 (GDA94)

Map 7: Buderim Area Overview



Scale: 1:21,426
 0 225 450 900 1,350 1,800 Meters



Sunshine Coast

Buderim Area Trail and Pathway Overview.
Potential Activation Project:
Goal is to encourage walking using existing pathways and trails by naming and theming loops around history and natural beauty of the Buderim Area



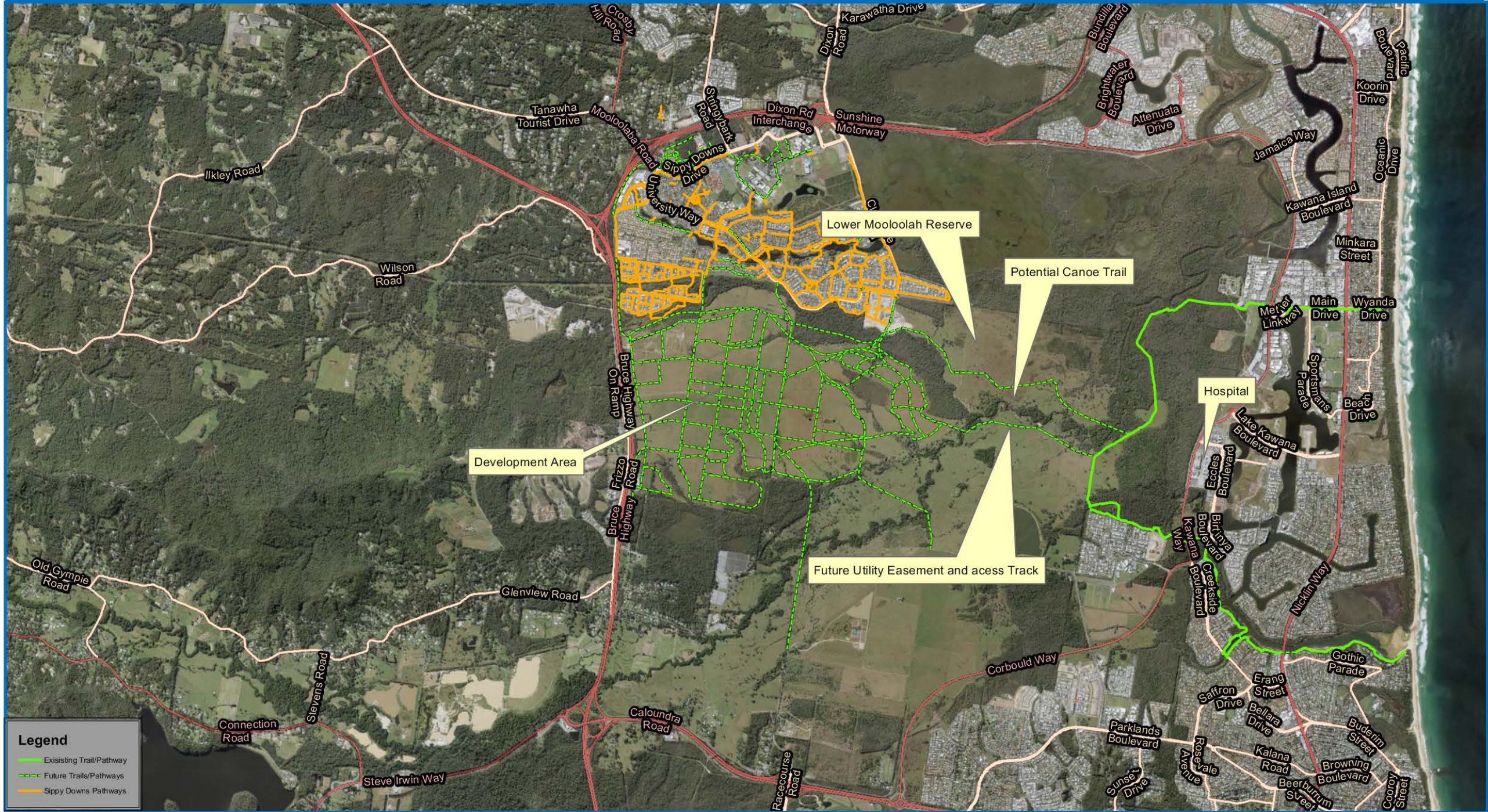
Sunshine Coast Council
 Locked Bag 72
 Sunshine Coast Mail Centre Qld 4560
 [e] mapping@sunshinecoast.qld.gov.au
 [w] www.maps.sunshinecoast.qld.gov.au
 [p] 07 5475 7272

Date: Tuesday, 21 February 2017
 Created by: KM035

Disclaimer
 While every care is taken to ensure the accuracy of this product, neither the Sunshine Coast Council nor the State of Queensland makes any representations or warranties about its accuracy, reliability, completeness or suitability for any particular purpose and disclaims all responsibility and all liability (including without limitation, liability in negligence) for all expenses, losses, damages (including indirect or consequential damage) and costs that may occur as a result of the product being inaccurate or incomplete in any way or for any reason.

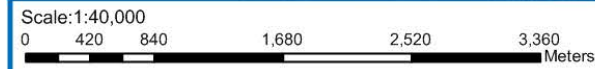
© Crown & Council Copyright Reserved.
 Geocentric Datum of Australia 1994 (GDA94)

Map 8: Kawana Forest Recreation Network



Legend

- Existing Trail/Pathway
- - - Future Trails/Pathways
- Sippy Downs Pathways



This is an initial concept map alignments and detailed planning for indicated future trails have as of yet to be determined thru a full planning and consultation process. Development Pathways may shift from indicated locations.



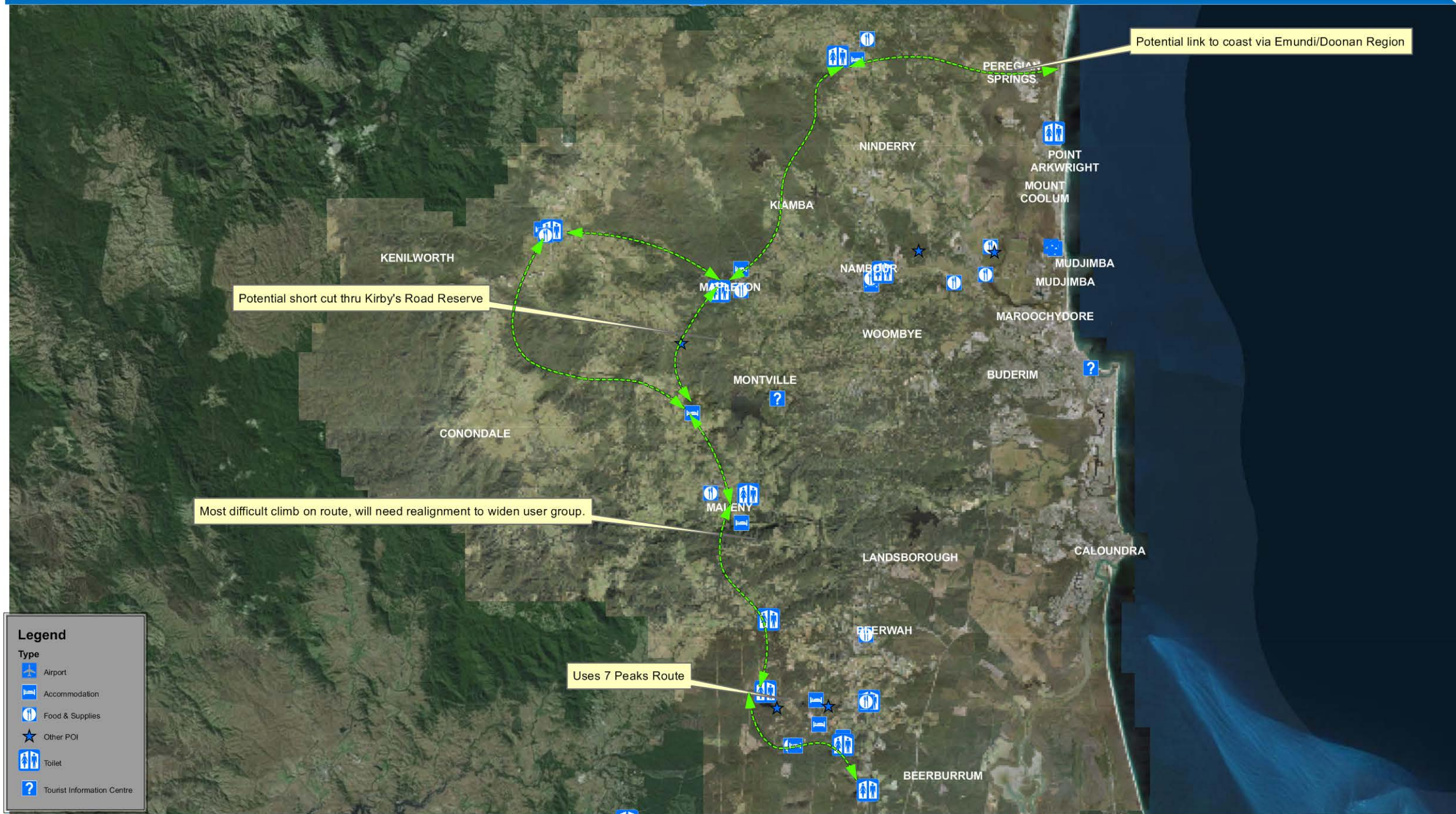
Sunshine Coast Council
 Locked Bag 72
 Sunshine Coast Mail Centre Qld 4560
 [e] mapping@sunshinecoast.qld.gov.au
 [w] www.maps.sunshinecoast.qld.gov.au
 [p] 07 5475 7272

Date: Monday, 27 February 2017
 Created by: KM035

Disclaimer
 While every care is taken to ensure the accuracy of this product, neither the Sunshine Coast Council nor the State of Queensland makes any representations or warranties about its accuracy, reliability, completeness or suitability for any particular purpose and disclaims all responsibility and all liability (including without limitation, liability in negligence) for all expenses, losses, damages (including indirect or consequential damage) and costs that may occur as a result of the product being inaccurate or incomplete in any way or for any reason.

© Crown & Council Copyright Reserved.
 Geocentric Datum of Australia 1994 (GDA94)

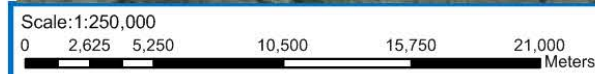
Map 9: Sunshine Coast Great Ride



Legend

Type

- Airport
- Accommodation
- Food & Supplies
- Other POI
- Toilet
- Tourist Information Centre



Great Ride Concept

The indicated concept shows desired links between locations, actual alignment yet to be determined by full planning and consultation process.



Sunshine Coast Council
 Locked Bag 72
 Sunshine Coast Mail Centre Qld 4560
 [e] mapping@sunshinecoast.qld.gov.au
 [w] www.maps.sunshinecoast.qld.gov.au
 [p] 07 5475 7272

Date: Tuesday, 21 February 2017
 Created by: KM035

Disclaimer
 While every care is taken to ensure the accuracy of this product, neither the Sunshine Coast Council nor the State of Queensland makes any representations or warranties about its accuracy, reliability, completeness or suitability for any particular purpose and disclaims all responsibility and all liability (including without limitation, liability in negligence) for all expenses, losses, damages (including indirect or consequential damage) and costs that may occur as a result of the product being inaccurate or incomplete in any way or for any reason.

© Crown & Council Copyright Reserved.
 Geocentric Datum of Australia 1994 (GDA94)

