



Sunshine Coast State Emergency Service (SES) Service Delivery Review

Executive Summary

The aim of this report is to review the current SES service delivery model for the Sunshine Coast Council region. Recent changes such as Council deamalgamation, the review of Queensland's Police and Emergency Services, the dismantling of Emergency Management Queensland, and the amalgamation of SES with Queensland Fire and Emergency Services, have created the need to review SES operations and co-funding arrangements. This report provides a 5yr short term outlook and a 10yr longer term strategic view of service delivery issues and considerations.

The key recommendations are:

1. A combined Council/QFES/SES 5 year strategic view is noted for the continued operations of the SES on the Sunshine Coast, in the form of a signed Memorandum of Understanding
2. Council continues to provide resources and support for the functioning of the State Emergency Service on the Sunshine Coast, in partnership with Queensland Fire and Emergency Services (Consistent with most Local Government Areas in Queensland) and that Council branding is included on SES buildings, vehicles and boats
3. SES identify and progress future SES requirements for the Caloundra South development area
4. SES provide a revised draft Memorandum of Understanding for future partnership discussion and agreement (SCC/SES negotiation required when received)
5. SES take over the management of all ICTS (Computer and Communications) requirements to align SES with QFES ICTS systems and processes. Estimated saving of \$48,500 in annual costs (further SCC/SES negotiation required)
6. SES manage all small equipment requirements to align with QFES purchasing, maintenance and training processes (further SCC/SES negotiation required)
7. SCC write to the Minister for Police, Fire and Emergency Services to request an increase in the:
 - a) annual SES subsidy contribution (currently \$42,000) provided to Sunshine Coast Council. Sunshine Coast Council currently fund \$388,000 towards the annual operations of the SES
 - b) value of annual grant funding for vehicles – to increase from \$15,000 per vehicle to \$30,000 per vehicle. Current replacement costs for vehicles range from \$50,000 to \$100,000 per vehicle
8. SCC write to each SES Unit to thank volunteer staff for their valuable contribution to community safety

Purpose

The purpose of this report is to identify key issues relevant to the ongoing operations of SES on the Sunshine Coast.

Background

The State Emergency Service (SES) is a volunteer emergency services organisation that provides community members with an opportunity to help the community in times of emergency and disaster.

In 1975 the Queensland State Government enacted the State Counter Disaster Organisation Act 1975 (SCDO Act) to create the State Emergency Service. The SES evolved from the former Queensland Civil Defence Organisation that had been in operation since 1961. The Queensland State Emergency Service was established because there was a need for a service that was capable of dealing with natural disasters as well as undertaking a civil defence role.

The SCDO Act 1975 required local government to “establish and maintain within its area a local emergency service based upon the resources of the local government and including the members of the State Emergency Service”.

Sunshine Coast State Emergency Service Groups were established and maintained by the previous Caloundra City, Maroochy and Noosa Shires. The SCDO Act included as a function of the SES a requirement “to advise and assist local governments, government departments, statutory organisations, voluntary groups and other bodies”.

The Disaster Management Act 2003 (DM Act) replaced the SCDO Act in March 2004. The DM Act continues the need for a SES capability and provides legislative requirements about its functions, such as disaster operations, search and rescue and the performance of other activities to help communities prepare for, respond to and recover from an event or disaster.

The DM Act (Part 5, S80) requires that “local government has a disaster response capability”. The DM Act does not directly state that local government must provide support for the effective functioning of the SES. It is recognised however, that the SES are historically embedded in all Queensland Local Government areas as a consequence of previous legislation, and that the establishment of SES Groups provides the required “local government disaster response capability” stated in the current DM Act. The efforts of SES volunteers assist Council during disaster events, and provide an operational response capability for the Sunshine Coast community during times of emergencies and disasters.

Following local government amalgamation in 2008, Officers from Council and Emergency Management Queensland (EMQ) met to discuss operations of the SES on the Sunshine Coast. EMQ thereafter commenced discussions during 2009 with Council about entering into a formal Memorandum of Understanding to document a shared agreement about roles and responsibilities relating to the operations of the SES.

A Memorandum of Agreement (MoU) was signed in 2012 between the Director-General of Community Services and the Sunshine Coast Council Chief Executive Officer, outlining the operating arrangements for the State Emergency Service (SES) on the Sunshine Coast. It detailed the agreed responsibilities for the management and support of the SES by Council and EMQ, based on the requirements of both parties under the Disaster Management Act 2003.

In November 2012 the Queensland Government announced the formal review into the state’s police and emergency services. The Minister for Police and Community Safety, the Hon. Jack Dempsey MP, appointed former Australian Federal Police (AFP) Commissioner Mick Keelty to head the review.

An outcome from the review in 2013 was that Emergency Management Queensland (EMQ) would cease to exist as an entity, and its functions would be integrated with the Queensland Fire and Rescue Service (QFRS) to form a new department named Queensland Fire and Emergency Services (QFES). An Emergency Services Volunteers (ESV) Division was established and is responsible for providing overall strategic leadership, direction and support to the Rural Fire Service Queensland, the State Emergency Service and other volunteer groups involved in emergency response. A Deputy Commissioner Emergency Service Volunteers position was created and filled in September 2015.

As a result of Council deamalgamation in 2014, the existing Sunshine Coast 12 SES groups were redistributed with 4 groups going to the Noosa Shire Council area and 8 groups remaining in the Sunshine Coast Council area. An overarching central regional SES headquarters located on the sunshine motorway was considered to be unnecessary in the new structure and was closed at this time.

The Keilty Review into emergency services in Queensland (Police and Community Safety Review Final Report – August 2013) reviewed the SES structure, including funding arrangements and operations. The report states that, “the overall issue of funding of the service (particularly cost sharing arrangements between State Government and Local Governments) is one, which will require considerable work into the future to ensure a sustainable capability. Currently there are significant differences across the state in terms of the ability of local government to support local SES units, either financially or in kind”.

The Keilty report also states that, “The issue of ownership of the SES is one that will require ongoing work between State and Local Government. Paradoxically the entity is called the State Emergency Service but it is largely seen by local governments to be a local emergency service. SES tends to be considered a state capability to be deployed as the state sees fit. In reality, however, many SES units are mostly funded and supported by both local governments and local communities”.

The report recommends that SES working within the QFES structure should provide, “many opportunities to be leveraged with other like volunteer organisations, particularly the Rural Fire Service. Such opportunities include training, accommodation, fleet, equipment and operational response. The joining up of some of these functions needs to be more closely considered to provide not only economies of scale, but also to maximize the advantages to individual members who volunteer their time freely.

In terms of ongoing partnerships and arrangements, the report states:

- Under current arrangements of the *Disaster Management Act 2003*, every local authority in Queensland is responsible for maintaining a disaster response capability
- For local governments, this means the ability to provide equipment and a suitable number of persons, using the resources available to the local government, to effectively deal with, or help another entity to deal with, an emergency situation or a disaster in the local government's area. Typically this means the formation of an SES group

- The chief executive officer (currently the Director-General of the Department of Community Safety) is responsible for establishing management and support services, setting policy and training standards, appointing key SES Unit personnel and for entering into agreements with local governments regarding responsibilities of each party. The Review team have concluded that there is a clear need for agreements to exist with every local government and that these need to take account of individual variances in the geography, demography, capability and capacity that exists within each of these authorities
- That the Deputy Commissioner Emergency Service Volunteers is made responsible for the production and efficacy of these agreements and that work commences on these as early as possible

SCOPE

The following issues have been identified as being within scope for this review:

- Responsibilities of State and Council
- Current financial arrangements
- Analysis of current capability and capacity
- Council deamalgamation related issues
- SES now working within the new QFES structure
- The Memorandum of Agreement between EMQ and Council for the support and operations of SES expired in July 2015
- EMQ no longer exist
- Schedule A was not finalised with EMQ and needs new clarity now that SES operate under QFES
- Impact of Caloundra South on SES Service Delivery
- Nambour SES building lease expires in 2016
- Several SES unit locations may be resumed in the long term future for road and rail corridors
- Review of the asset replacement program (vehicles, boats and trailers)

Legislation and functions

The primary functions of the SES within all Local Government Council areas of Queensland are to ensure a disaster response capability as outlined in the Disaster Management Act 2003 and the Fire and Emergency Services Act 1990 (amended reprint 21 May 2014).

The Queensland State Emergency Service is a not-for-profit organisation that is supported through a partnership between the State Government and all Local Governments of Queensland and the SES volunteers themselves. Both State and Local Governments work towards a common SES goal, with and for the benefit of the community.

The Queensland SES consists of thousands of 'unpaid' volunteers from a variety of backgrounds and professions who respond to emergencies and disasters across the State. These volunteers are supported by a small number of SES paid staff. Queensland Fire and Emergency Services provides the State Government coordination and a support component.

SES staff are trained and equipped to help their communities across a range of functions, and their primary purpose is to assist the most vulnerable members of the community. The SES is designed to empower people to help themselves and others in times of emergency and disaster. The basic concept is one of self-help and mutual assistance within each community.

The primary functions of the SES are:

- (a) to perform rescue or similar operations in an emergency situation
- (b) to perform search operations in an emergency or similar situation
- (c) to perform other operations in an emergency situation to:
 - (i) help injured persons or
 - (ii) protect persons or property from danger or potential danger associated with the situation
- (d) to perform other activities to help communities prepare for, respond to and recover from an event or a disaster and
- (e) to perform activities to raise the profile of the SES or raise funds to support the SES in the performance of its other functions.

The SES also provides assistance in preparing for, and responding to, many different types of disasters and emergencies including:

- Cyclones, Storms, Floods
- Crime Scene/Forensics Searches
- Earthquakes and Landslides
- Cliff rescues and Transportation incidents (road/rail/air)
- Searches for missing persons
- Animal disease outbreaks
- Emergency lighting and Emergency welfare services
- Management of traffic at emergency scenes

Financial arrangements

Council provide a budget for:

- an annual operating budget - \$430,000 (includes a SES annual subsidy contribution of \$42,000)
- provision of land and buildings for 8 SES units (estimate \$8 million replacement value)
- buildings and facilities maintenance(\$137,000)
- fleet and workshop (\$78,000)
- contract services (\$48,000)
- fuel (\$14,000)
- insurance (\$8,000)
- electricity (\$20,000)
- operational equipment maintenance (\$8,000)
- information technology equipment (\$21,500)
- mobile and fixed line telephone and internet (\$27,000)
- stationary and consumable equipment (\$1,000)
- an honorarium to one SES local controller (\$10,000)
- depreciation (\$37.5,000)
- council administration costs (\$15,000)

Total SCC commitment as at 30th June 2016 = \$8.38 million

SES

The State Government and the Public Safety Business Agency (PSBA) contributions to the SES are estimated to be approximately \$4,700 per volunteer per annum; on the Sunshine Coast approximately \$1.42 million per annum.

This is comprised of annual costs being:

- recurrent subsidy to Council (\$42,000)
- averaged non-recurrent subsidies (\$35,000)
- replacement flood boats and trailers (varies from year to year)
- current flood boats and trailers insurance value (\$224,000)
- clothing and equipment (\$110,000 - \$115,000)
- support management and administration of the SES – (\$300,000 - \$320,000)
- the creation and maintenance of policies and procedures (PSBA cost undetermined)
- human resource management and training (PSBA cost undetermined)

Capital works funding

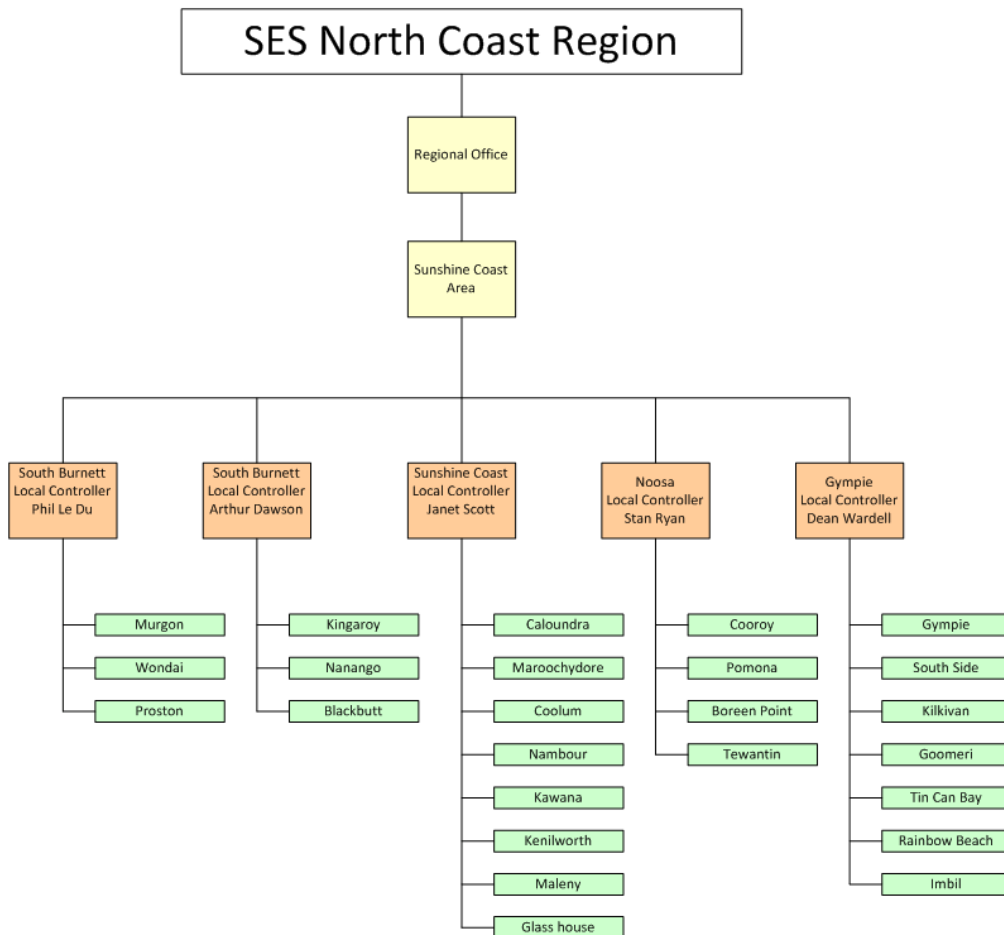
Funding for capital works and building facility upgrades has been achieved through a combination of SES sought funding and Council contributions. Recent examples include:

- Cooroy SES shed extension - \$45,000 received from the SES State Subsidy Program and \$51,000 co-contribution from Council
- Maroochydore SES storage shed build - \$45,000 received from the State Subsidy Program and \$25,000 co-contribution from Council

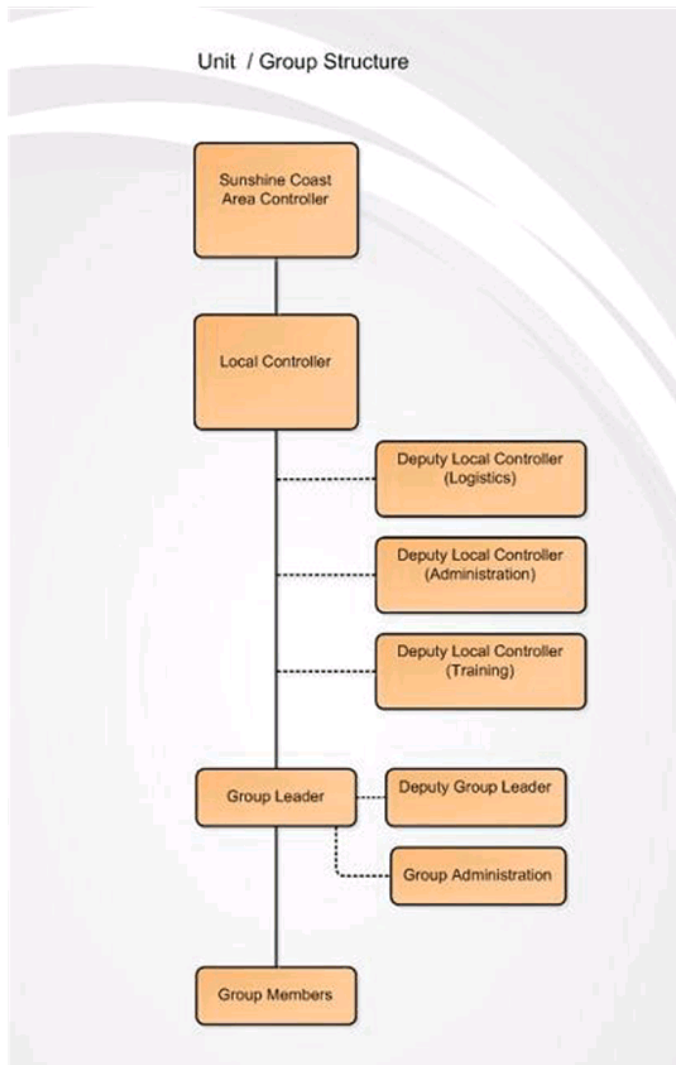
There are no recent examples of new SES buildings constructed on the Sunshine Coast. Indicative costs for the construction of a new SES facility are:

- SES Sarina (2015) - \$610,000 funded through the Disaster Response Levy and built on Council land
- SES Cairns (2014) - \$2 million State Election commitment
- SES Lowood (2012) – EMQ \$82,000 contribution, Somerset Regional Council \$166,000
- SES Russell Island (2014) – SES Subsidy Program \$50,000, Redland City Council \$70,000
- SES Nanango (2014) – SES Subsidy Program \$50,000, South Burnett Regional Council \$80,000 + provision of the land

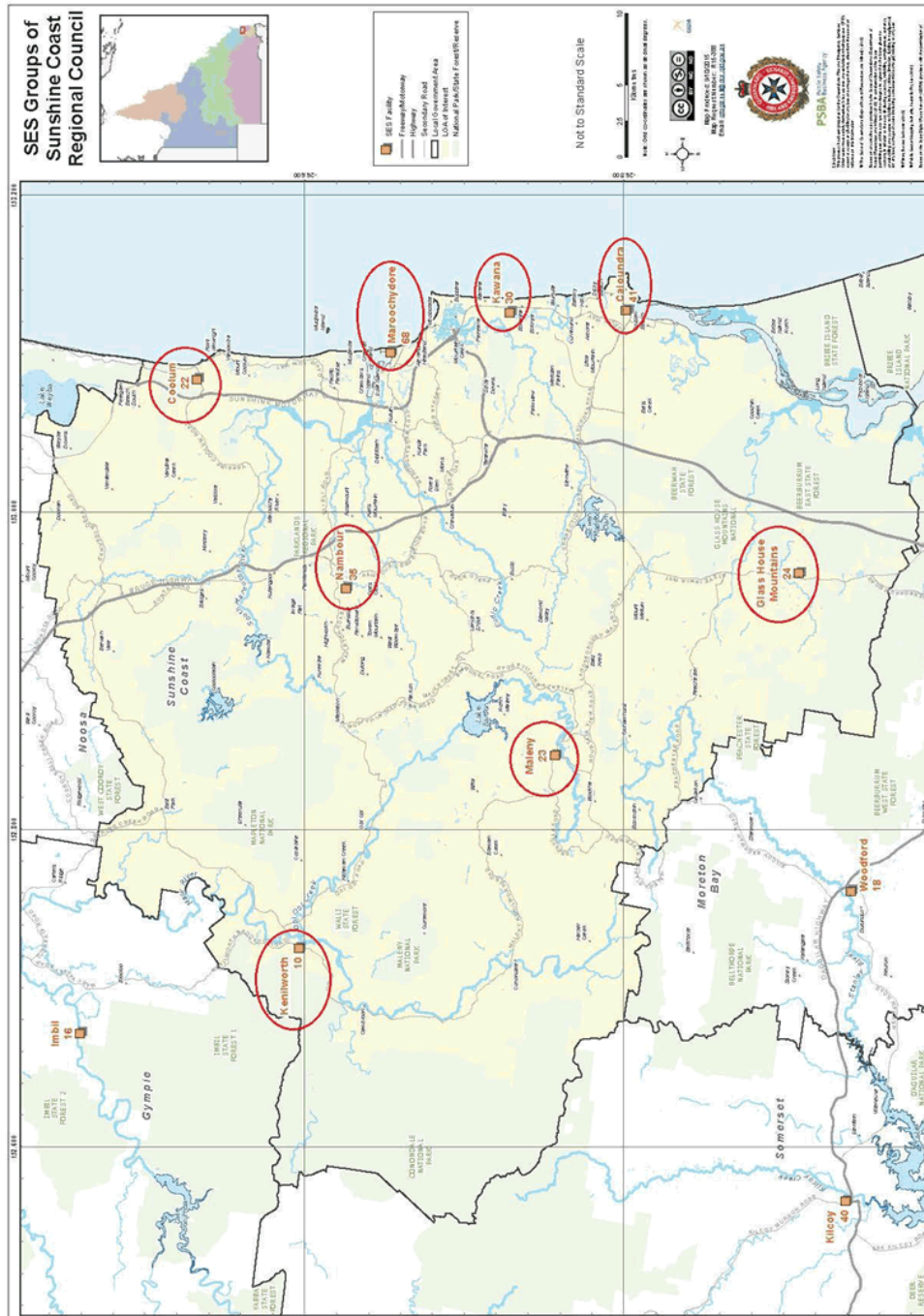
Regional SES Structure



Sunshine Coast Unit/Group Structure



Sunshine Coast SES Groups Location Map



Sunshine Coast State Emergency Service (SES) service delivery and capability review and recommendations report 9

Caloundra SES (Regional Headquarters)



Region	North Coast Region
Area	Sunshine Coast
Unit	Sunshine Coast Unit
Group Title	Caloundra Group
Local Government	Sunshine Coast Regional Council
Activations per year	180 average ** See foot note**
Tenure	Council Freehold - Indefinite
Physical Address	Ulm Street
Lot Number	Lot 2 RP 124874
Latitude and Longitude	26.47.55 S 153.07.52 E
Postal Address	14 Anglia Street, Little Mountain, 4551
Email	caloundrases@bigpond.com
Internet or Web site	Yes

Site Map



Facilities

Facilities	Status
Running Water	Yes
Showers	Yes
Toilets	Yes
Kitchen Facilities	Full Kitchen
Air Conditioned	Partial
Backup power	Generator
Internet Access	Yes
Approximate Age of Building	CIRCA 1980's
Building Construction	Metal/ Classroom is Brick
Owner of Building	Sunshine Coast Council
Conditions of Building	Good
Adequate Storage	Yes
Appropriate storage for fuel	No
Adequate Garaging	Yes
Adequate Meeting/Training Area	Yes – Capacity to Seat 20

Suitable Location	Yes
Suitable Space to establish IMT	Yes
Co-location	No

Vehicles

Vehicle 1 Type	Toyota Land cruiser Troop Carrier 4WD
Age	30-11-2004
Registration Number	QGA046
Vehicle 2 Type	Isuzu D-MAX (5 Seat)
Age	20-02-2012
Registration Number	QGGL19
Vehicle 3 Type	Ford Transit (7 Seat)
Age	21-05-2003
Registration Number	QGX199

Trailers

Trailer 1 Type	Box Trailer - Single Axle
Age	01-01-1978
Registration Number	QG1960
Trailer 2 Type	Box Trailer - Single Axle
Age	01-01-1990
Registration Number	QG3921
Trailer 3 Type	Box Trailer - Single Axle
Age	01-01-1993
Registration Number	QG4504
Trailer 4 Type	Sand Bag Machine Trailer - Tandem Axle
Age	01-02-2013
Registration Number	173QWD

Boats

Boat 1	Horizon Boats. V Hull 4.6M (Honda 50HP)
Type	Rescue Flood Boat
Age	06-05-2004
Registration Number	26331QD

Specialist Equipment (Sandbag Machines- Generator Trailers)

Type	C Mac Industries Sandbag Machine
Age	2013

Agreed Membership

Agreed membership numbers	35
Active membership numbers	41
Applicant	1
Probation	3
Total	45

Short Term Issues (5yr outlook)

- The Caloundra SES Regional Headquarters and location currently provide a level of functionality suitable for the region

Long Term Issues (10yr outlook)

- The current site is strategically located, with its future potential being considered in the development of the Caloundra Centre Master Plan
- Indicative costs for the relocation of the regional headquarters to a site in Caloundra would be in the vicinity of \$2 million, based on the recent construction costs of new SES Regional Headquarter facilities in Mackay and Cairns

NOTE: For all Sunshine Coast SES Groups regarding *Activations per year *

The figures quoted in relation to "activations per year" only reflect the calls for assistance received through the 132500 number. It does not accurately reflect the full extent of the work conducted by the State Emergency Service in the local area, which includes:-

- *Jobs of opportunity completed by the SES when operational in the field.*
- *Sandbagging assistance provided to the Community (eg. 12,000 bags provided in Feb 2015)*
- *Community Education and Community Service Activities*
- *Deployments to assist communities in other Local Government Areas*
- *Assistance to the State for activities, such as extensive land search efforts for the Daniel Morcombe case, G20 Summit, missing aircraft search and rescue, missing persons land search, etc.*

Coolum SES



Region	North Coast Region
Area	Sunshine Coast
Unit	Sunshine Coast
Group Title	Coolum Group
Local Government	Sunshine Coast Regional Council
Activations per year	190 (plus footnote as per Caloundra Group profile)
Tenure	Council Freehold - Indefinite
Physical Address	Elizabeth Street Coolum
Lot Number	Lot 360 RP 142916
Latitude and Longitude	26.31.43 S 153. 05.12 E
Postal Address	PO Box 28, Coolum Qld, 4573
Email	sescoolum@bigpond.com
Internet or Web site	Yes

Site Map



Facilities

Facilities	Status
Running Water	Yes
Showers	Yes
Toilets	Yes
Kitchen Facilities	Full Kitchen
Air Conditioned	Partial
Backup power	Generator
Internet Access	Yes
Approximate Age of Building	Circa 1980's
Building Construction	Metal
Owner of Building	Sunshine Coast Council
Conditions of Building	Good
Adequate Storage	Yes

Appropriate storage for fuel	No
Adequate Garaging	Yes
Adequate Meeting/Training Area	Yes – Capacity to Seat 20 People
Suitable Space to establish IMT	Yes
Suitable Location	Yes
Co-location	Auxiliary Fire Brigade located adjacent to facility

Vehicles

Vehicle 1 Type	Dmax 4 X 4 Crew cab pick-up (5 Seat)
Age	04-06-2012
Registration Number	QGGD48
Vehicle 2 Type	Dmax 4 X 4 Crew cab pick-up 37167 (5 Seat)
Age	04-06-2012
Registration Number	QGGD49

Trailers

Trailer 1 Type	AAA Engineering Box Trailer - Single Axle
Age	30-06-2007
Registration Number	182QNV
Trailer 2 Type	Mango Trailers Box Trailer - Single Axle
Age	01-01-1997
Registration Number	AR0450
Trailer 3 Type	Belco Trailers Trailer for Flood Boat 26988QD
Age	20-04-2005
Registration Number	BX8466
Trailer 4 Type	Trailer for Flood Boat 26988QD
Age	20-04-2005
Registration Number	BX8466

Boats

Boat 1	Horizon Boats V Hull 4.6M (Honda 50HP Outboard Motor)
Type	Rescue Flood Boat
Age	18-08-2005
Registration Number	26988QD

Agreed Membership

Agreed membership Numbers	30
Active Membership Numbers	22
Probation	1
Total	23

Short Term Issues (5yr outlook)

At this time the location, membership and functionality of the SES Coolum Group meet the needs of Council, SES and the community.

Long Term Issues (10yr outlook)

No known issues

Glasshouse SES



Region	North Coast Region
Area	Sunshine Coast
Unit	Sunshine Coast Unit
Group Title	Glass House Group
Local Government	Sunshine Coast Regional Council
Tenure	State of Queensland: Reserve for Local Government Emergency Services Purposes under control of Council as Trustee - Indefinite
Activations per year	150 (plus footnote as per Caloundra Group profile)
Physical Address	Beerwah Parade, Beerwah 4519
Lot	Lot 751 CG 6070
Latitude and Longitude	26.51.20 S 152.57. 28
Postal Address	230 Bury's Rd, Beerwah QLD 4519
Email	sesbeerwah@bigpond.com
Internet or Web site	Yes

Site Map



Facilities

Facilities	Status
Running Water	Yes
Showers	One shower - Unisex
Toilets	One Toilet Unisex
Kitchen Facilities	Small kitchenette
Air Conditioned	No
Backup power	Generator
Internet Access	Yes
Approximate Age of Building	Circa 1980's
Building Construction	Metal
Owner of Building	Sunshine Coast Council
Conditions of Building	Good
Adequate Storage	Yes
Appropriate storage for fuel	No
Adequate Garaging	Yes
Adequate Meeting/Training Area	No - Requires a Training Room
Suitable Space to establish IMT	No

Suitable Location	Yes – but land to be resumed by Queensland Rail
Co-location	No

Vehicles

Vehicle 1 Type	Toyota Land cruiser Troop Carrier 4WD (11 Seat)
Age	20-04-2004
Registration Number	QGA042

Trailers

Trailer 1 Type	Bedford Trailers Box Trailer - Single Axle
Age	01-01-1981
Registration Number	QG2279

Agreed Membership

Agreed membership Numbers	20
Active Membership Numbers	27
Applicant	-
Probation	3
Total	30

Short Term Issues (5yr outlook)

- At this time the membership and functionality of the SES Glasshouse Group meet the needs of Council, SES and the community

Long Term Issues (10yr outlook)

- The current site may be compulsory resumed by the Department of Transport and Main Roads Queensland as part of the Government's Integrated Regional Transport Plan (IRTP) planned rail duplication project. In this case, the Acquisition of Land Act 1967 (Qld) would apply and adequate compensation would be sought to establish a new SES Unit in a suitable location

Kawana SES



Region	North Coast Region
Area	Sunshine Coast
Unit	Sunshine Coast Unit
Group Title	Kawana SES Group
Local Government	Sunshine Coast Regional Council
Tenure	Council Freehold - Indefinite
Activations per year	75 (plus footnote as per Caloundra Group profile)
Physical Address	7 Tandem Ave, Warana 4575
Lot	Lot 79 W95561
Latitude and Longitude	26.46.43 S 153.07.33 E
Postal Address	PO Box 6034, Meridan Plains, Qld 4613
Email	kawana_ses@bigpond.com
Internet or Web site	Yes

Site Map



Facilities

Facilities	Status
Running Water	Yes
Showers	Yes
Toilets	Yes
Kitchen Facilities	Full Kitchen
Air Conditioned	Partial
Backup power	Generator
Internet Access	Yes
Approximate Age of Building	Circa 1980's, New Garage 2012
Building Construction	Metal
Owner of Building	Sunshine Coast Council
Conditions of Building	Good
Adequate Storage	Yes
Appropriate storage for fuel	No

Adequate Garaging	Yes
Adequate Meeting/Training Area	Yes – Capacity to seat 20 people
Suitable Space to establish IMT	Yes
Suitable Location	Yes

Vehicles

Vehicle 1 Type	Volkswagen, Transporter Crewvan (5 Seat)
Age	01-01-2008
Registration Number	QGX197
Vehicle 2 Type	Toyota, Land cruiser Troop Carrier 4WD (11 Seat)
Age	07-03-2006
Registration Number	QGY417

Trailers

Trailer 1 Type	AAA Engineering, Box Trailer - Single Axle
Age	30-06-2007
Registration Number	183QNV
Trailer 2 Type	Suncoast Trailers, Box Trailer - Single Axle
Age	01-01-1997
Registration Number	AP7704
Trailer 3 Type	Bedford Trailers, Box Trailer - Single Axle
Age	01-01-1985
Registration Number	QG2891
Trailer 4 Type	Telwater, Trailer for Flood Boat 30505QD
Age	01-07-2010
Registration Number	303QSF

Boats

Boat 1	Stacer 4.89M Barra Pro (Honda 75HP Outboard)
Type	Rescue Flood Boat
Age	21-06-2010
Registration Number	30305QD

Agreed Membership

Agreed membership Numbers	30
Active Membership Numbers	28
Applicant	-
Probation	-
Total	28

Short Term Issues (5yr outlook)

- At this time the membership and functionality of the SES Kawana group meet the needs of Council, SES and the community
- The current site is subject to flooding during significant rain events
- Discussion is required to determine if the group could be amalgamated with the Caloundra group.

Long Term Issues (10yr outlook)

- Viability of the Unit assessed for amalgamation with the Caloundra group

Kenilworth



Region	North Coast Region
Area	Sunshine Coast
Unit	Sunshine Coast Unit
Group Title	Kenilworth
Local Government	Sunshine Coast Regional Council
Tenure	Council Freehold - Indefinite
Activations per year	10 (plus footnote as per Caloundra Group profile)
Physical Address	1 Margret Street, Kenilworth
Lot	Lot 12,13,14 RP 4357
Latitude and Longitude	26.35.46 S 152.43.29 E
Postal Address	PO Box 53, Kenilworth 4574
Email	sesken@bigpond.com
Internet or Web site	Yes

Site Map



Facilities

Facilities	Status
Running Water	Yes
Showers	Yes
Toilets	Yes
Kitchen Facilities	Full Kitchen
Air Conditioned	Partial
Backup power	Generator
Internet Access	Yes
Approximate Age of Building	Circa 1980's
Building Construction	Metal
Owner of Building	Sunshine Coast Council
Conditions of Building	Fair
Adequate Storage	Yes
Appropriate storage for fuel	No
Adequate Garaging	Yes

Adequate Meeting/Training Area	Yes – Capacity to Seat 20 People
Suitable Space to establish IMT	Yes
Suitable Location	Yes
Co-location	Shares with First Response Volunteer Ambulance

Vehicles

Vehicle 1 Type	Toyota, Land cruiser Troop Carrier 4WD
Age	18-04-2000
Registration Number	QGJ293

Trailers

Trailer 1 Type	AAA Engineering, Box Trailer - Tandem Axle
Age	12-06-2009
Registration Number	888QQO
Trailer 2 Type	Sunshine Coast Trailers, Box Trailer - Single Axle
Age	1-03-2002
Registration Number	BI4383
Trailer 3 Type	Olympic Trailers, Box Trailer - Single Axle
Age	01-01-1986
Registration Number	QG3232
Trailer 4 Type	Telwater, Trailer for Flood Boat 29531QD
Age	30-05-2009
Registration Number	220QQK

Boats

Boat 1	4.89M Barra Pro (Suzuki 70HP Outboard Motor)
Type	Rescue Flood Boat
Age	30-05-2009
Registration Number	29531QD

Agreed Membership

Agreed membership Numbers	10
Active Membership Numbers	10
Applicant	-
Probation	-
Total	10

Short Term Issues (5yr outlook)

At this time the location, membership and functionality of the SES Kenilworth Unit meet the needs of Council, SES and the community.

Long Term Issues (10yr outlook)

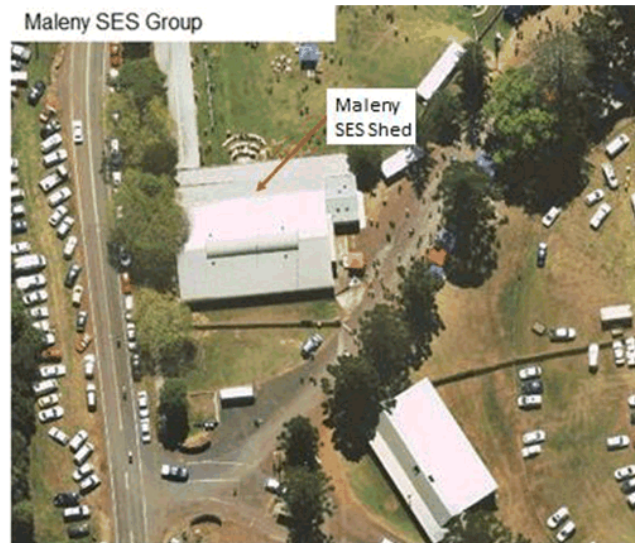
No known issues

Maleny



Region:	North Coast Region
Area	Sunshine Coast
Unit	Sunshine Coast Unit
Group Title	Maleny Group
Local Government	Sunshine Coast Regional Council
Tenure	Council Freehold - Indefinite
Activations per Year	75 (plus footnote as per Caloundra Group profile)
Physical Address	Cattle Pavilion, Maleny Showgrounds, Stanley River Rd, Maleny QLD 4552
Lot	Lot 278 SP145810
Latitude and Longitude	26.45.43 S 152.50.48 E
Postal Address	201 Engle Road, Maleny 4552
Email	sesmaleny@bigpond.net.au
Internet or Web site	Yes

Site Map



Facilities

Facilities	Status
Running Water	Yes
Showers	Yes
Toilets	Yes
Kitchen Facilities	Full Kitchen
Air Conditioned	Partial
Backup power	Generator
Internet Access	Yes
Approximate Age of Building	Circa 1980's
Building Construction	Metal
Owner of Building	Sunshine Coast Council
Conditions of Building	Good
Adequate Storage	Yes
Appropriate storage for fuel	No
Adequate Garaging	Yes

Adequate Meeting/Training Area	Yes- Some termite infestation – Capacity to Seat 20
Suitable Space to establish IMT	Yes – For small incidents only
Suitable Location	Yes, However as it is in Cattle Pavilion, the SES group must vacate the pavilion during show events

Vehicles

Vehicle 1 Type	Toyota, Land cruiser, Troop Carrier 4WD (11 Seat)
Age	01-10-2001
Registration Number	QGH473
Vehicle 2 Type	Toyota, Hilux dual cab, diesel 97128 (5 Seat)
Age	21-11-2012
Registration Number	QGHG54

Trailers

Trailer 1 Type	Box Trailer - Single Axle (Manufacturer unknown)
Age	01-01-1983
Registration Number	QG2562
Trailer 2 Type	Trailers 2000, Box Trailer - Tandem Axle
Age	01-01-1994
Registration Number	QG4934
Trailer 3 Type	Thomas Town, Box Trailer - Single Axle
Age	01-01-1993
Registration Number	QG4935
Trailer 4 Type	Savage Boats, Trailer for Flood Boat 31345QD
Age	29-05-2012
Registration Number	DK4469

Boats

Boat 1	Savage Boats, 3.85M Jabiru (Mercury 30HP Outboard Motor)
Type	Rescue Flood Boat
Age	29-05-2012
Registration Number	31345QD

Agreed Membership

Agreed membership Numbers	15
Active Membership Numbers	22
Applicant	-
Probation	4
Total	26

Short Term Issues (5yr outlook)

- Maleny SES shares a shed with the Rural Fire Service in the cattle pavilion at the Maleny Showgrounds
- Events held at the Showgrounds require SES to evacuate from the shed at various times of the year. Other events also impact on SES operations at the Showground. Events include the Maleny Annual Show, Maleny Wood Expo, Maleny Arts and Craft Maytime Fair, Maleny Garden Club's Annual Gardening on the Edge and Real Food Festival
- Evacuating the shed causes considerable disruption to SES operations, requiring the removal of essential equipment, resources, vehicles, etc.
- Discussions with the Show Society have not identified any alternative on site accommodation opportunities for the SES (either short term during events, or a separate building to accommodate the SES, or a separate parcel of land to construct a new facility)
- Volunteers are seeking an alternative site to conduct Maleny SES operations due to the disruptions caused by the events held at the Showgrounds

Maroochydore



Region	North Coast Region
Area	Sunshine Coast
Unit	Sunshine Coast Unit
Group Title	Maroochydore Group
Local Government	Sunshine Coast Regional Council
Tenure	State of Queensland: Reserve for Recreation Under Control of Council as Trustee (Own) - Indefinite
Activations per year	300 (plus footnote as per Caloundra Group profile)
Physical Address	Elizabeth Daniels Park
Lot	Lot 664 CP CP901247
Latitude and Longitude	26.40.37 S 153.05.44 E
Postal Address	PO Box 5055, Maroochydore South, QLD 458
Email	sesmaroochydore@bigpond.com
Internet or Web site	Yes

Site Map



Facilities

Facilities	Status
Running Water	Yes
Showers	No
Toilets	Yes
Kitchen Facilities	Yes
Air Conditioned	Partial
Backup power	Portable Generator
Internet Access	Yes
Approximate Age of Building	Constructed 1989/ New Garage Built 2015
Building Construction	Concrete Brick/ New Garage - Metal
Owner of Building	Sunshine Coast Council
Conditions of Building	Good
Adequate Storage	Yes
Appropriate storage for fuel	No
Adequate Garaging	Yes

Adequate Meeting/Training Area	Yes – Capacity to seat 30 people
Suitable Space to establish IMT	Yes
Suitable Location	Yes
Co-location	St Johns Ambulance in building beside SES

Vehicles

Vehicle 1 Type	Volkswagen, 2007, Diesel Transporter (5 Seat)
Age	2007
Registration Number	QGME12
Vehicle 2 Type	Land Cruiser Troop Carrier LC70 4WD (11 Seat)
Age	30-09-2010
Registration Number	QGEK22
Vehicle 3 Type	Mercedes Benz Van (6 Seat)
Age	09-08-2008
Registration Number	QGGG39

Trailers

Trailer 1 Type	Box Trailer General Purpose
Age	01-12-1991
Registration Number	539QZA
Trailer 2 Type	Traffic Control
Age	01-01-1981
Registration Number	QG2335
Trailer 3 Type	Storm Damage (Expected Delivery Mid 2016)
Age	0
Trailer 4 Type	Trailer for Flood Boat 29049QD
Age	20-09-2008
Registration Number	029QPA

Boats

Boat 1	4.89M Barra Pro (Suzuki 70HP Outboard Motor)
Type	Flood Boat
Age	01-08-2008
Registration Number	29049QD

Agreed Membership

Agreed membership Numbers	40
Active Membership Numbers	68
Applicant	1
Probation	9
Total	78

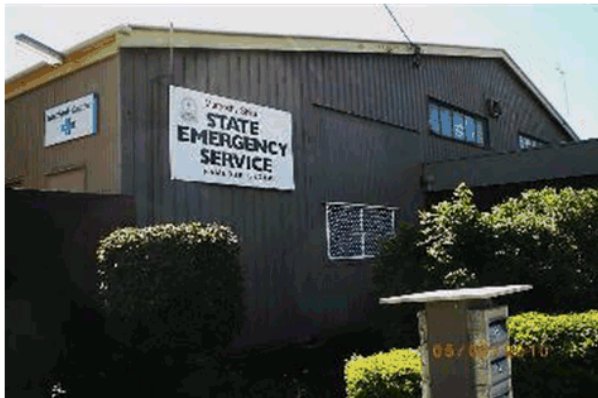
Short Term Issues (5yr outlook)

- The current Maroochydhore SES land parcel and facility are too small for the resources and number of volunteers attached to the SES Unit. At this time there is no room for expansion. A St Johns Ambulance facility co-located next to them would provide an expansion opportunity if it was to become vacant in the future.

Long Term Issues (10yr outlook)

- The current site may be compulsory resumed by the Department of Transport and Main Roads in the future as part of the Sunshine Coast Multi-Modal Transport Corridor (MMTC). In this case, the Acquisition of Land Act 1967 (Qld) would apply and adequate compensation would be sought to establish a new SES Unit in a suitable and agreed location

Nambour



Region	North Coast Region
Area	Sunshine Coast
Unit	Sunshine Coast Unit
Group Title	Nambour Group
Local Government	Sunshine Coast Regional Council
Tenure	Leased from Sundale Garden Village Nambour
Activations per year	195 (plus footnote as per Caloundra Group profile)
Physical Address	40 Doolan Street, Nambour
Lot	Unknown
Latitude and Longitude	26.37.33 S, 152.57.48 E
Postal Address	4 National Park Road, Nambour 4560
Email	sesnambour@bigpond.com
Internet or Web site	Yes

Site Map



Facilities

Facilities	Status
Running Water	Yes
Showers	No
Toilets	Yes
Kitchen Facilities	Yes Upstairs
Air Conditioned	Partial
Backup power	Portable Generator
Internet Access	Yes
Approximate Age of Building	Circa 1970's
Building Construction	Metal
Owner of Building	Council has leased these facilities
Conditions of Building	Poor - Roof Leaks
Adequate Storage	Yes
Appropriate storage for fuel	No
Adequate Garaging	Yes

Adequate Meeting/Training Area	Yes – Capacity to seat 25 People
Suitable Space to establish IMT	Yes
Suitable Location	Yes
Co-location	Rear adjoining shed is up for lease.

Vehicles

Vehicle 1 Type	Hyundai, Imax Shuttle SLX (8 Seat)
Age	22-04-2010
Registration Number	576QGU
Vehicle 2 Type	Toyota, Land cruiser LC70 4WD (11 Seat)
Age	30-09-2010
Registration Number	QGEK23
Vehicle 3 Type	Volkswagen 2007 Dual Cab Transporter
Age	2007
Registration Number	QGKG42

Trailers

Trailer 1 Type	Trailers 2000, Box Trailer - Single Axle
Age	17-01-2012
Registration Number	428QTM
Trailer 2 Type	Sunshine Coast Trailers, Box Trailer - Single Axle
Age	24-03-2005
Registration Number	BY9331
Trailer 3 Type	Generator /Lighting trailer Single axle
Age	15-01-1999
Registration Number	DT2827
Trailer 4 Type	Box Trailer - Single Axle
Age	01-01-1983
Registration Number	QG2558

Trailer 5 Type	Telwater, Trailer for Flood Boat 40134QD
Age	07-01-2014
Registration Number	247QXM

Boats

Boat 1	Stacer Boats, 4.90M (Yamaha 70HP Outboard Motor)
Type	Rescue Flood Boat
Age	07-01-2014
Registration Number	40134QD

Agreed Membership

Agreed membership Numbers	35
Active Membership Numbers	36
Applicant	-
Probation	-
Total	36

Short Term Issues (5yr outlook)

- Nambour SES is currently housed in leased facilities that are in poor condition. The current lease is \$57k per annum.
- The current lease expires in June 2016
- Relocation will occur to the disused Woombye Council Works depot in June 2016

Long Term Issues (10yr outlook)

- The Council works depot at Woombye provides a long term SES facility and capability in Nambour

Legal

The information contained in this report is presented without prejudice to assist Council, the QFES and the SES in meeting their respective legislative requirements and obligations.

Policy

There are no identified policy implications for this report.

Risk

Any reduction in resourcing support for the SES may increase the risk that local SES volunteers may withdraw their volunteer services, resulting in a reduced capability to provide an effective response to the Sunshine Coast community during disasters or emergencies.

Memorandum of Understanding

A Memorandum of Agreement (MoU) was signed in 2012 between the Director-General of Community Services and the Sunshine Coast Council Chief Executive Officer. The MoU outlined the operating arrangements for the State Emergency Service (SES) on the Sunshine Coast. It detailed the agreed responsibilities for the management and support of the SES by Council and EMQ, based on the requirements of both parties under the Disaster Management Act 2003. The MoU expired in 2015 and is awaiting a new draft final version to be provided by the SES to Council for negotiation. The expired MoU will continue to be acknowledged until an updated MoU is in place.

A draft schedule (Schedule A) was also developed to clarify the supporting arrangements for the State Emergency Service (SES) on the Sunshine Coast. It detailed the agreed responsibilities for the management and support of the SES as agreed to by Council and EMQ. Final agreement of the shared responsibilities and related cost sharing was not achieved, largely due to a planned reorganisation of QLD emergency services in 2013. The contents of the draft schedule were agreed to as an "in principle" guide to ensure a continuing SES operational capability, until a review of Queensland Emergency Services was completed and a subsequent final agreement on the shared responsibilities could be reached. Now that the SES works under a combined QFES structure, there may be closer alignment with QFES rather than with SCC for some support services, such as Information and Communication Technology Services.

Recommendations

This report recommends that the following items are actioned as described below:

The key recommendations are:

1. A combined Council/QFES/SES 5 year strategic view is noted for the continued operations of the SES on the Sunshine Coast, in the form of a signed Memorandum of Understanding
2. Council continues to provide resources and support for the functioning of the State Emergency Service on the Sunshine Coast, in partnership with Queensland Fire and Emergency Services (Consistent with most Local Government Areas in Queensland) and that Council branding is included on SES buildings, vehicles and boats
3. SES identify and progress future SES requirements for the Caloundra South development area
4. SES provide a revised draft Memorandum of Understanding for future partnership discussion and agreement (SCC/SES negotiation required when received)
5. SES take over the management of all ICTS (Computer and Communications) requirements to align SES with QFES ICTS systems and processes. Estimated saving of \$48,500 in annual costs (further SCC/SES negotiation required)
6. SES manage all small equipment requirements to align with QFES purchasing, maintenance and training processes (further SCC/SES negotiation required)
7. SCC write to the Minister for Police, Fire and Emergency Services to request an increase in the:
 - a) annual SES subsidy contribution (currently \$42,000) provided to Sunshine Coast Council. Sunshine Coast Council currently fund \$388,000 towards the annual operations of the SES
 - b) value of annual grant funding for vehicles – to increase from \$15,000 per vehicle to \$30,000 per vehicle. Current replacement costs for vehicles range from \$50,000 to \$100,000 per vehicle
8. SCC write to each SES Unit to thank volunteer staff for their valuable contribution to community safety

Attachments

Attachment 1: National Arrangements for the State Emergency Service

Attachment 2: Signed MOA Sunshine Coast

Attachment 3: Draft Schedule A – Local Arrangements SCC Version 2.4

