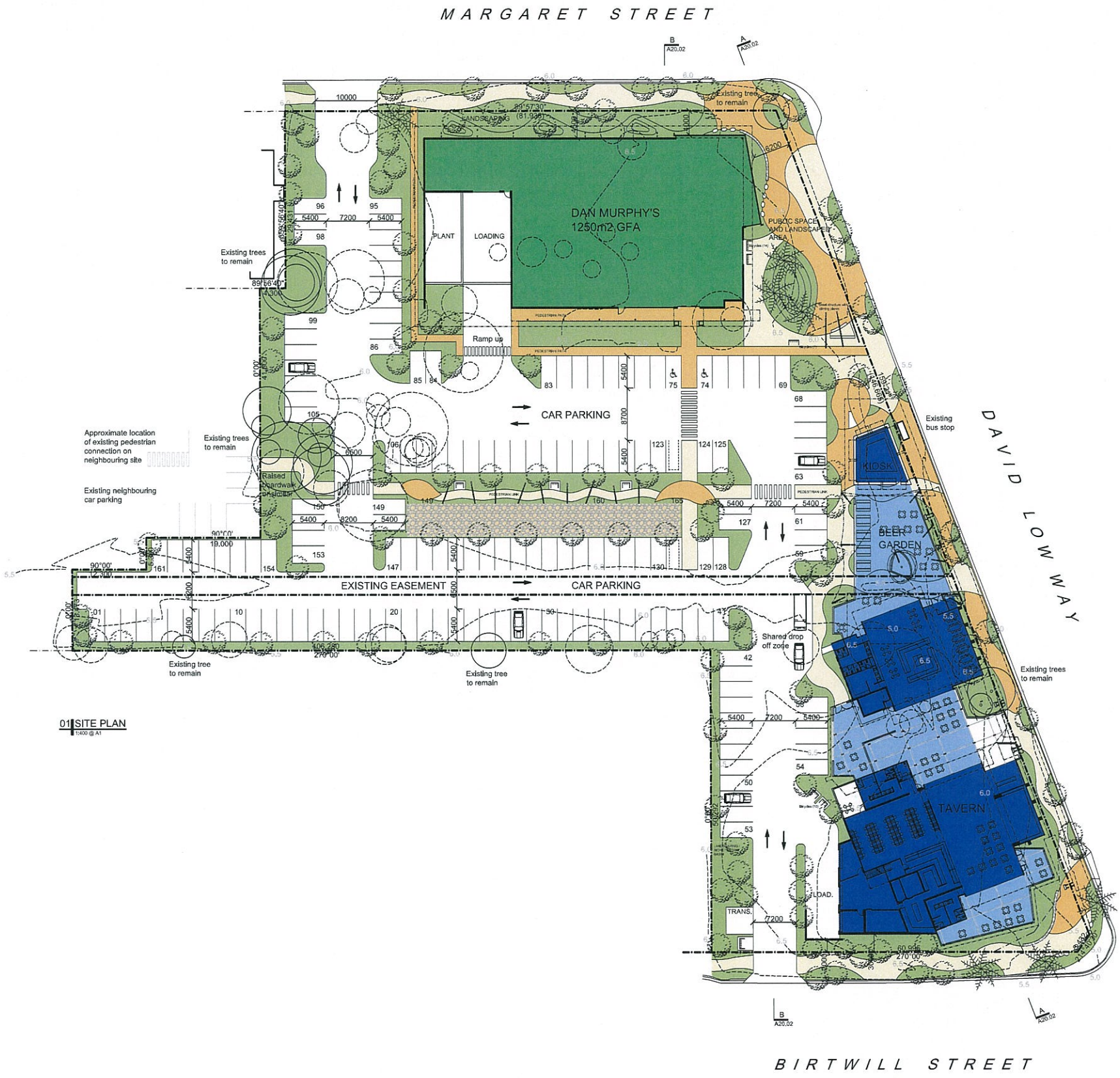


DA SUBMISSION	
NOT FOR CONSTRUCTION	
DEVELOPMENT DATA:	
RPD:	LOTS 1 & 3 ON SP 107662
SITE AREA:	12,390m ²
PROPOSED GFA:	
DAN MURPHY'S:	1,250m ²
TAVERN:	1,056m ²
GROUND FLOOR:	102m ²
BEER GARDEN:	294m ²
TERRACE BISTRO:	121m ²
PLAZZA:	267m ²
KIOSK:	59m ²
TOTAL GFA:	3,149m ² (25%)
CAR PARKING:	161 cars
LEGEND:	
LANDSCAPING	
PAVING	
RETENTION BASINS	



01 SITE PLAN
1:400 @ A1

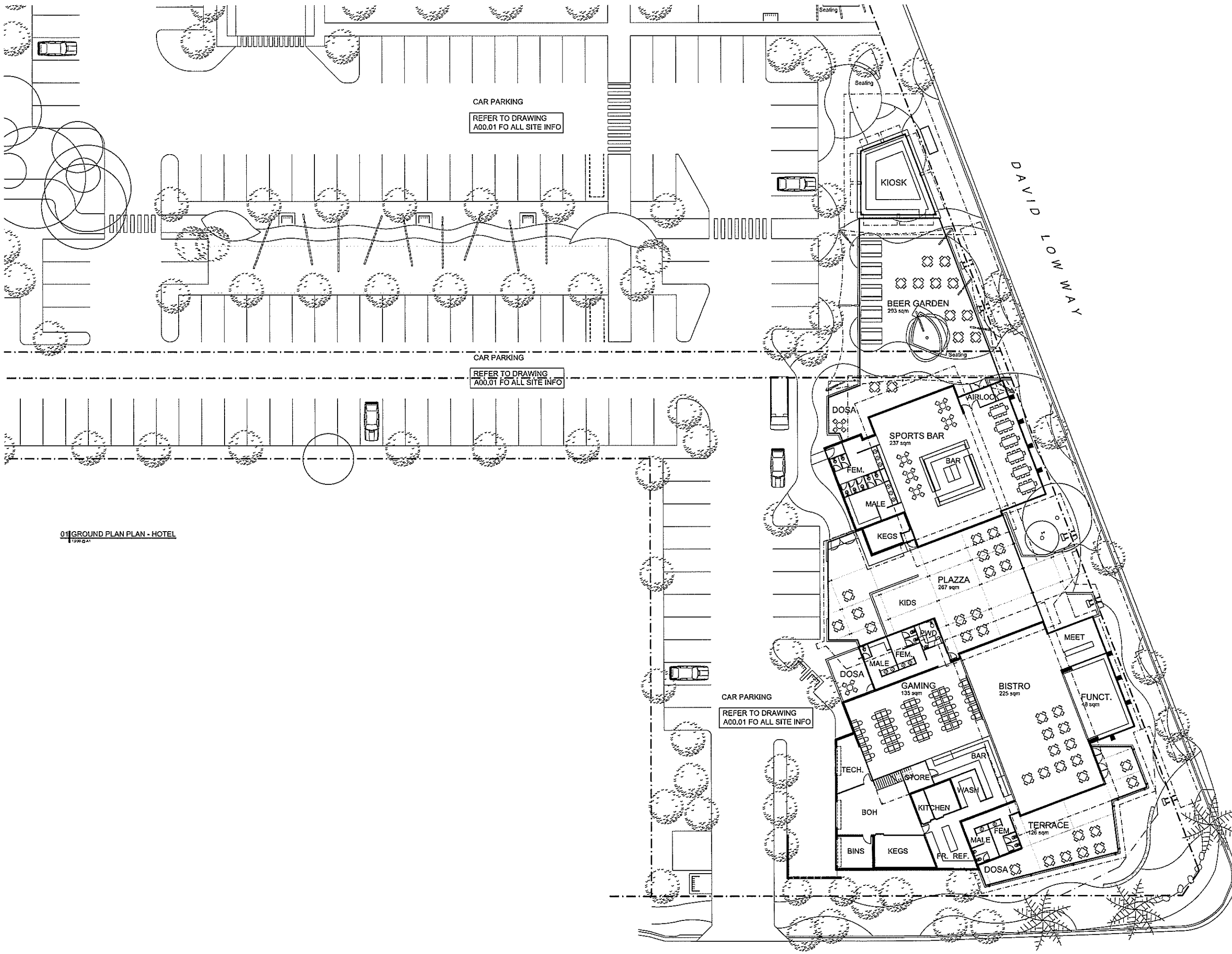
P19 Revised DA submission	AH	16.01.13
P18 Revised DA submission	AH	10.01.13
P17 Revised DA submission	AH	09.01.13
P16 Revised DA submission	AH	12.12.12
P15 Revised DA submission	AH	16.11.12
P14 Revised DA submission	AH	14.11.12
P13 Retention basin added	AH	09.08.12
P12 Revised DA submission	AH	06.08.12
P11 DA submission	AH	19.06.12
P10 Civil/landscape coordination	AH	18.06.12
P9 Deletion of BWS	AH	12.06.12
P8 Preliminary issue	AH	05.05.12
P7 Landscaping coordination	AH	05.05.12
P6 Development data added	AH	31.05.12
P5 Preliminary issue to consult	AH	21.05.12
P4 Issue to cons. for fee proposals	AH	15.05.12
P3 ANV truck added	AH	27.02.12

CAYASarchitects
 Ltd 1, Time Square, 2 Heather Street, PO Box 360, Wilston Q 4051
 p 07 3356 6100 f 07 3356 0664 e admin@cayasarchitects.com.au
 client | ALH GROUP

project | COOLUM HOTEL DEVELOPMENT
 drawing title | SITE PLAN

drawn | AH
 date | FEB 12
 scale | 1:400 @ A1

drawing number | 1149-A00.01
 issue | P19



01 GROUND PLAN PLAN - HOTEL
1:200 @ A1

P9	Revised DA submission	AH	09.01.13
P8	Revised DA submission	AH	14.11.12
P7	Revised DA submission	AH	10.08.12
P6	Revised DA submission	AH	06.05.12
P5	DA submission	AH	19.06.12
P4	Del. of EWS, hazz, beer garden	AH	22.06.12
P3	Preliminary Issue	AH	03.06.12
P2	Landscaping coordination	AH	05.06.12
P1	Preliminary Issue to consult.	AH	21.05.12

issue revision initials date

CAYASarchitects
 Lvl 1, Tene Square, 2 Heather Street, PO Box 305, Winton Q 4251
 p 07 3306 8100 f 07 3308 0054 e admin@cayasarchitects.com.au

client | ALH GROUP

project | COOLUM HOTEL DEVELOPMENT

drawing 650 | GROUND FLOOR PLAN - HOTEL

drawn | AH

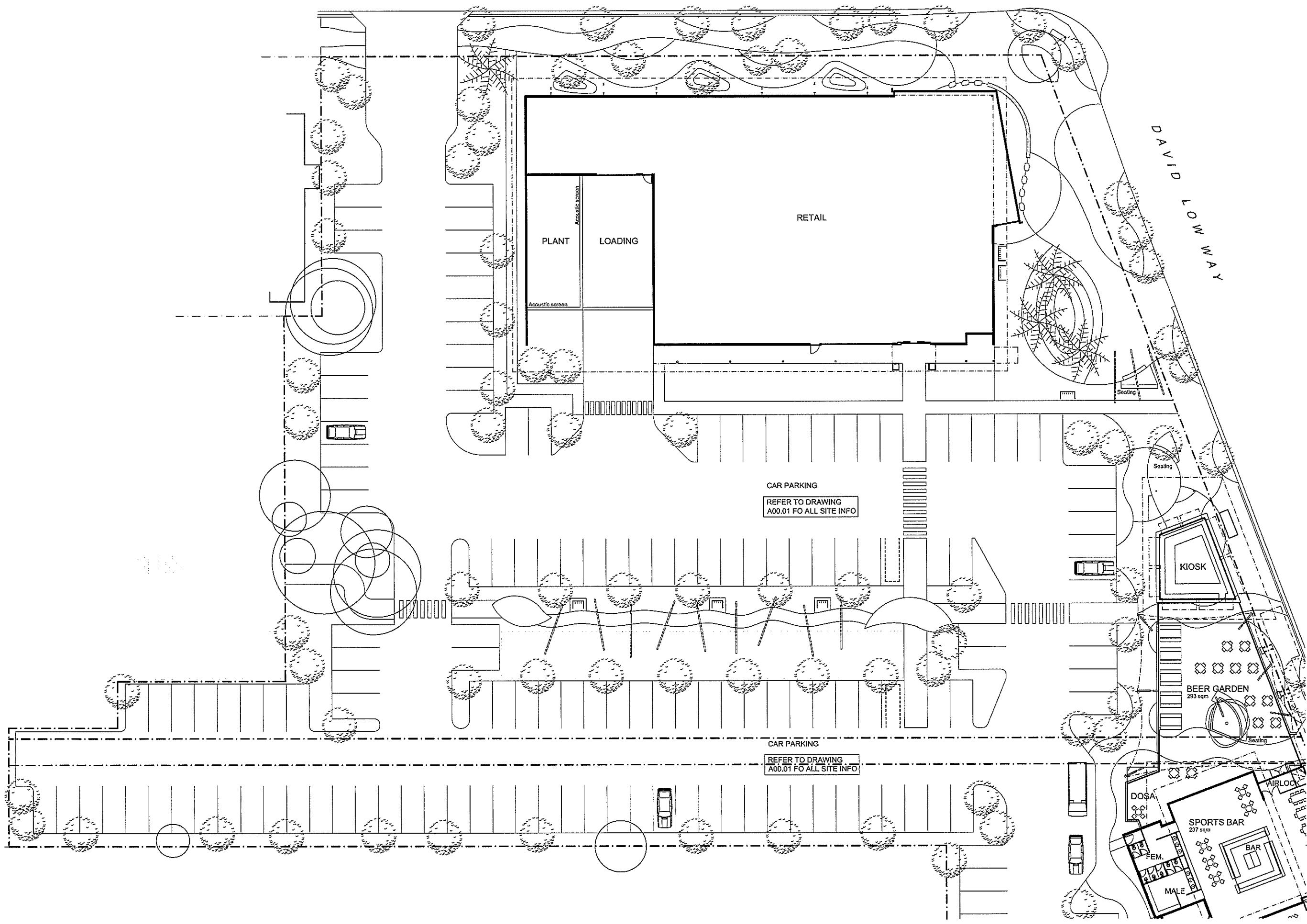
date | MAY 12

scale | 1:200 @ A1

drawing number | 1149-A10.01
 issue | P9

BIRTWILL STREET

MARGARET STREET



P11	Revised DA submission	AH	16.01.13
P10	Revised DA submission	AH	10.01.13
P9	Revised DA submission	AH	03.01.13
P8	Revised DA submission	AH	14.11.12
P7	Revised DA submission	AH	10.08.12
P6	Revised DA submission	AH	05.08.12
P5	DA submission	AH	19.06.12
P4	Deletion of BWS	AH	12.06.12
P3	Preliminary Issue	AH	03.06.12
P2	Landscaping coordination	AH	05.06.12
P1	Preliminary Issue to consult	AH	21.05.12

issue-revision initials date

CAYASarchitects
 Lot 1, Time Square 2 Heather Street, PO Box 302, Winton Q 4251
 p 07 3256 6100 f 07 3256 0044 e admin@cayasarchitects.com.au

client | ALH GROUP

project | COOLUM HOTEL DEVELOPMENT

drawing title | GROUND FLOOR PLAN - DAN MURPHY'S

drawn | AH

date | MAY 12

scale | 1:200 @ A1

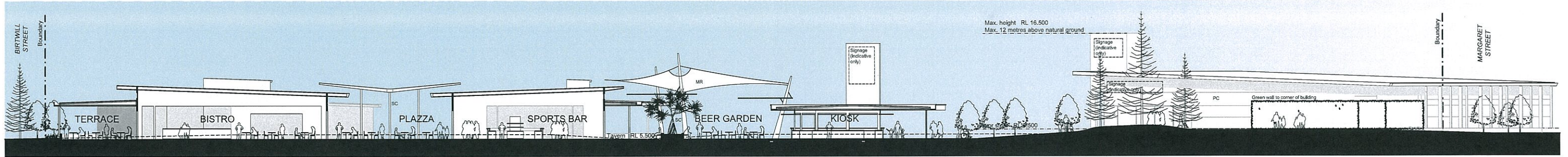
drawing number | 1149-A10.02
 issue | P11

DA SUBMISSION

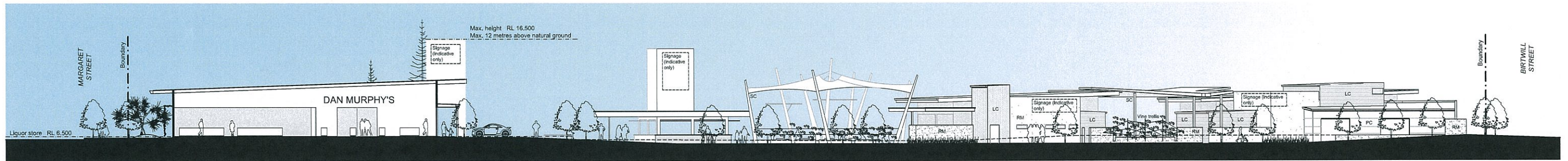
NOT FOR CONSTRUCTION

FACADE TREATMENTS:

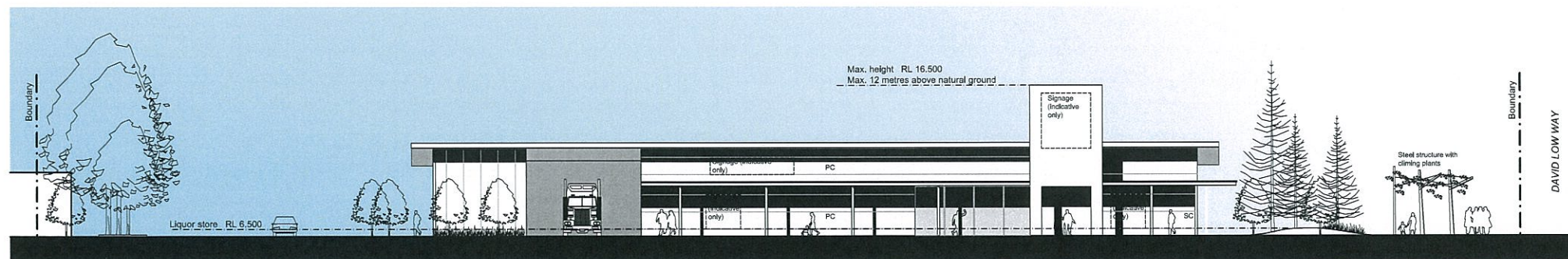
- PC: Painted concrete
- RM: Rendered masonry
- LC: Lightweight cladding
- T: Tiles
- SC: Steel column
- MRS: Metal roof sheeting
- MR: Membrane roof



01 SECTION A-A
1:200 @ A1



02 SECTION B-B
1:200 @ A1



03 SOUTH ELEVATION - LIQUOR STORE
1:200 @ A1

P10	Revised DA submission	AH	16.01.13
P9	Revised DA submission	AH	16.01.13
P8	Revised DA submission	AH	09.01.13
P7	Revised DA submission	AH	16.11.12
P6	Revised DA submission	AH	10.05.12
P5	DA submission	AH	19.06.12
P4	Desktop BWS, incr. beer gard.	AH	13.06.12
P3	Preliminary issue	AH	08.06.12
P2	Preliminary issue to consult.	AH	05.06.12
P1	Preliminary issue to clients	AH	31.05.12
Issue revision		Initials	date

CAYASarchitects

Lvl 1, Time Square, 2 Heather Street, PO Box 360, Wilston Q 4051
p 07 3356 6100 f 07 3356 0664 e admin@cayasarchitects.com.au

client ALH GROUP

project COOLUM HOTEL DEVELOPMENT

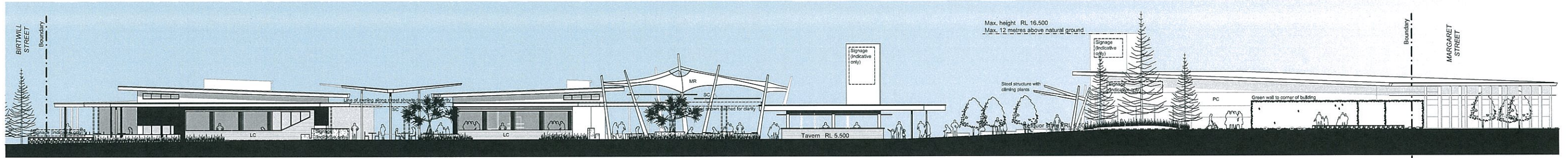
drawing title ELEVATIONS AND SECTIONS

drawn AH
date MAY 12
scale 1:200 @ A1

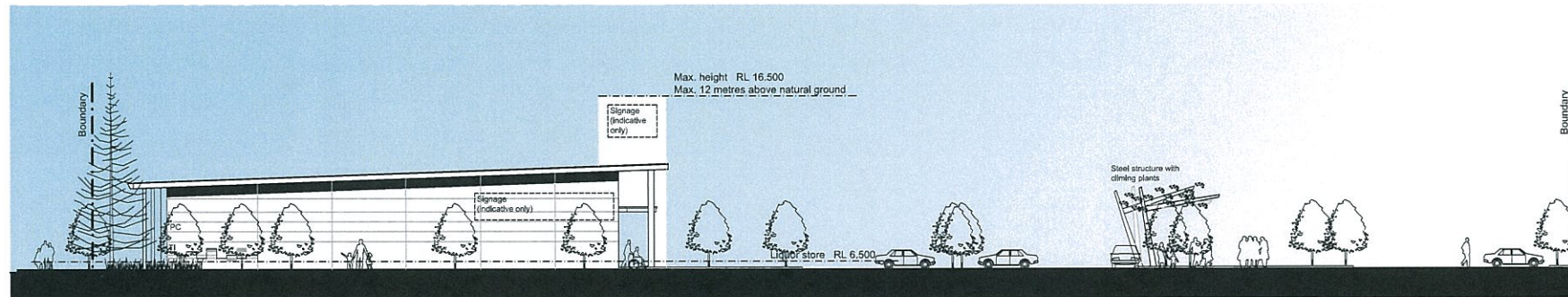
drawing number 1149-A20.02
issue P10

FACADE TREATMENTS:

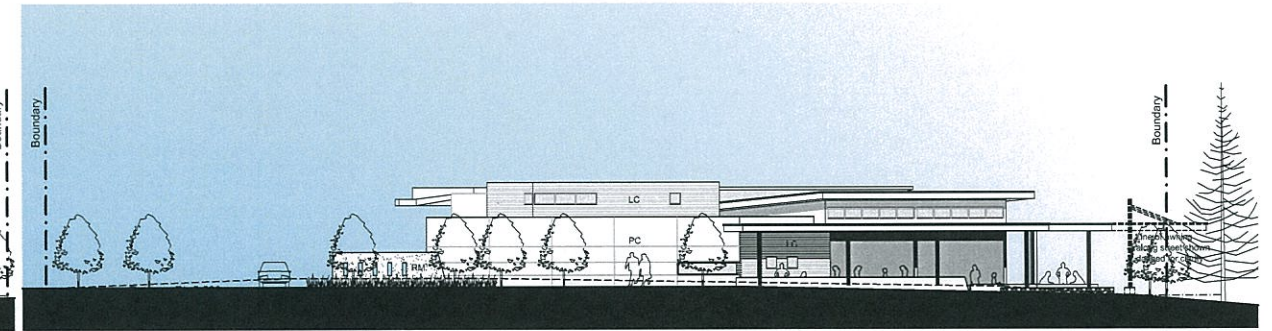
- PC: Painted concrete
- RM: Rendered masonry
- LC: Lightweight cladding
- TL: Tiles
- SC: Steel column
- MRS: Metal roof sheeting
- MR: Membrane roof



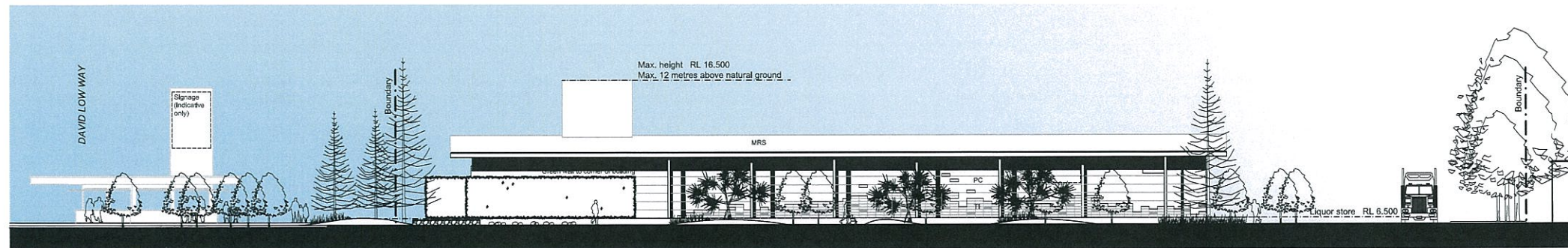
01 NORTH EAST ELEVATION - DAVID LOW WAY
1:200 @ A1



02 WEST ELEVATION
1:200 @ A1



03 SOUTH ELEVATION - BIRTWILL STREET
1:200 @ A1



04 NORTH ELEVATION - MARGARET STREET
1:200 @ A1

P8	Revised DA submission	AH	09.01.13
P7	Revised DA submission	AH	19.11.12
P6	Revised DA submission	AH	10.08.12
P5	DA submission	AH	19.06.12
P4	Deletion BWS, incr. beer gard.	AH	13.06.12
P3	Preliminary issue	AH	08.06.12
P2	Preliminary issue to consult.	AH	05.06.12
P1	Preliminary issue to clients	AH	31.05.12
	issue revision	initials	date

CAYASarchitects

Lvl 1, Time Square, 2 Heather Street, PO Box 360, Winton Q 4251
p 07 3356 6100 f 07 3356 0664 e admin@cayasarchitects.com.au

client ALH GROUP




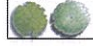



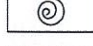



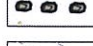
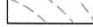
project COOLUM HOTEL DEVELOPMENT

drawing title ELEVATIONS AND SECTIONS

drawn AH
date MAY 12
scale 1:200 @ A1

drawing number 1149-A20.01
issue P8

LEGEND

-  EXISTING TREES
To be retained
-  EXISTING TREES
To be removed
-  FEATURE TREE
Norfolk Pine
-  SHADE TREES
-  TURFING
-  GARDEN BED
-  PAVING
-  PUBLIC ART
-  VINE TRELLIS/ARBOUR
-  SEAT
-  SEATING WALL
-  FEATURE BOULDERS
-  MOUNDING

MARGARET ST FRONTAGE
Turfed areas reflect surrounding street character whilst garden beds with 'dunal' mounds, relocated Pandanus and coastal understorey plantings create a distinctive frontage to the Dan Murphy's building. A curvilinear footpath is planted on either side with trees and understorey to create a pleasant walk and further soften the building facade.

EXISTING MELALEUCAS
To remain

EXISTING MELALEUCA & CUPANIOPSIS
To remain

PEDESTRIAN CONNECTION
Boardwalk or permeable paving pathway provides connection through to adjoining site with minimal disturbance to existing trees.

CARPARK
Planted with shade trees, screening shrubs to boundaries and low planting elsewhere to 'green' the carpark whilst maintaining sight lines.

EXISTING CUPANIOPSIS
To remain

BIORETENTION BASIN
Planted with species as per *Healthy Waterways WSUD Technical Design Guidelines*.

EXISTING BANKSIA
To remain

VINE COVERED ARBOUR
Creates a central shaded walk linking through the carpark development to adjoining property connections.

VINE TRELLISES
To western facade for shade and buffering of carpark from the beer gardens.

CORNER LANDSCAPING
Clear trunked trees with low understorey plants keep sightlines for pedestrians and motorists clear at street corners and driveway entrances.

EXISTING BANKSIA
To remain

SEATING WALL
Rock clad seating wall and feature boulders

PUBLIC ART
Potential space for public art installation (if required) on street corner.

GREEN WALL
Mesh trellising planted with vines creates a green facade to street corner.

MOUNDING
Grass mound adds height variation within forecourt landscape and is planted with iconic coastal trees (Norfolk Pines) to create a visual focus.

SEATING
Informal forecourt seating for passing pedestrians to rest and dine/drink from the kiosk at the end of the Tavern. Trees and vine covered pergola provide shade and seasonal colour.

BUS STOP

STREETSCAPE
Curvilinear paving patterns and garden beds reflect the desired informal character of the Coolool Village Masterplan and create a contemporary feel that is then carried through the rest of the site.

FEATURE GARDEN PLANTER

BEER GARDEN

STREET AWNING

SPORTS BAR



COOLUM TAVERN - Landscape Concept




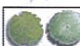
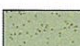


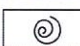





CLIENT ALH
SCALE 1:200 @ A1
DATE AUGUST 2012
DRAWING SK01
ISSUE [C]

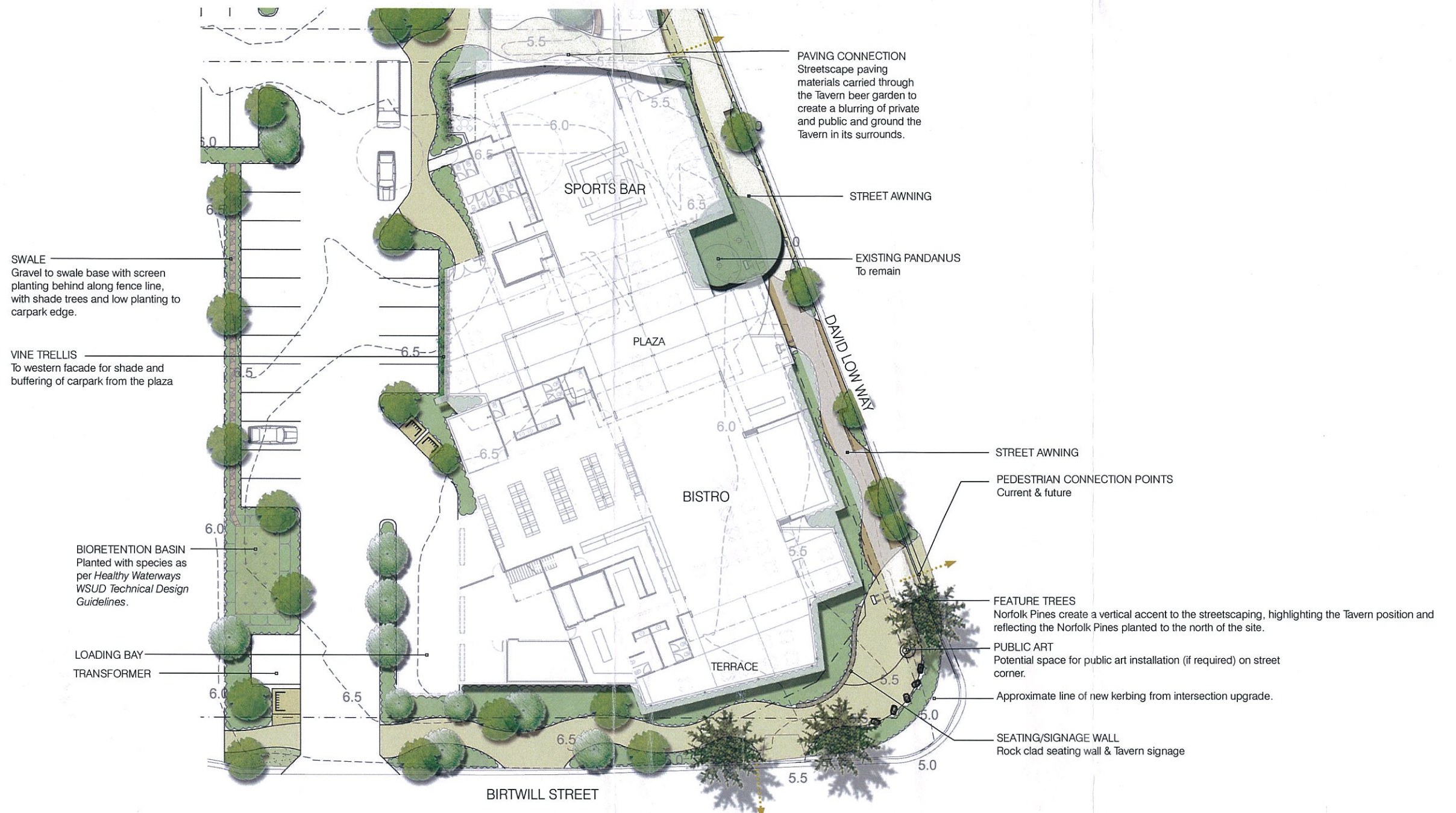


**JEREMY
FERRIER
LANDSCAPE
ARCHITECT**



LEGEND

-  EXISTING TREES
To be retained
-  EXISTING TREES
To be removed
-  FEATURE TREE
Norfolk Pine
-  SHADE TREES
-  TURFING
-  GARDEN BED
-  PAVING
-  PUBLIC ART
-  VINE TRELLIS/ARBOUR
-  SEAT
-  SEATING WALL
-  FEATURE BOULDERS
-  MOUNDING



GREEN WALL
Mesh trellising planted with vines creates a green facade to street corner.

MARGARET ST FRONTAGE
Dunal mounds with relocated Pandanus and coastal understorey plantings.

STREET TREES
Street trees and understorey along a curvilinear footpath create a pleasant walk and further soften the building facade.

MOUNDING AND FEATURE TREES
Grass mound adds height variation within forecourt landscape and planted with iconic coastal trees (Norfolk Pines) to create a visual focal point.

SEATING WALL
Rock clad seating wall and feature boulders



NORTHERN/MARGARET ST FRONTAGE

BOUNDARY PLANTING
Trees and shrubs along boundary fencing creates screening and softening of carpark perimeter.

COOLUM TAVERN - Landscape Concept

CLIENT ALH
SCALE 1:200 @ A1
DATE AUGUST 2012
DRAWING SK02
ISSUE [C]



JEREMY FERRIER
LANDSCAPE ARCHITECT

