





Prepared for:

Investa

Prepared by:

RPS Australia East

Suite 18, Level 2 Central Brunswick,
455 Brunswick Street,
Fortitude Valley, QLD 4006, Australia

Telephone: +61 7 3124 9300 Facsimile: +61 7 3124 9399

www.rpsgroup.com.au

ABN 81 591 046 588 JUNE 2016 - [ISSUE 1]



© RPS 2016

The information contained in this document produced by RPS is solely for the use of Investa Land for the purpose for which it has been prepared and RPS undertakes no duty to or accepts any responsibility to any third party who may rely upon this document.

All rights reserved. No section or element of this document may be removed from this document, reproduced, electronically stored or transmitted in any form without the written permission of RPS.

contents

introduction	4	indicative street tree species	20
context	5	green fingers strategy	22
vision	6	streetscape tree location	24
design principles	7	materials and finishes strategy	27
landscape masterplan	10	local linear parks	28
landscape open space strategy	11	wsud strategy	34
local park strategy	13	regional recreation park RR1-1	36
cycle & pedestrian strategy	14	district recreation park DR1	37
planting strategy	16	district recreation park DR2	38
plant palette	17	district sports park DS1	39
streetscape strategy	19		

introduction

This document presents the neighbourhood design and landscape vision for this exciting Harmony masterplan area. The proposal focuses on creating a diverse, compelling and sustainable community.

The neighbourhood design and landscape masterplan defines a number of guiding principles which are a response to the embedded characteristics of the site and the stated objectives of the Structure Plans, Planning Scheme and Infrastructure Agreement.

The purpose of this document is to provide an overall framework, capable of being reviewed over time, with which detailed applications commonly adhere to and build upon.

The detailed information forms the framework for the mixed density residential component, of approximately 1130 dwellings, within the initial neighbourhood of Harmony.

This neighbourhood will eventually include medium density residential, local employment, community purpose land, regional recreation park, Town park and the district activity centre



context

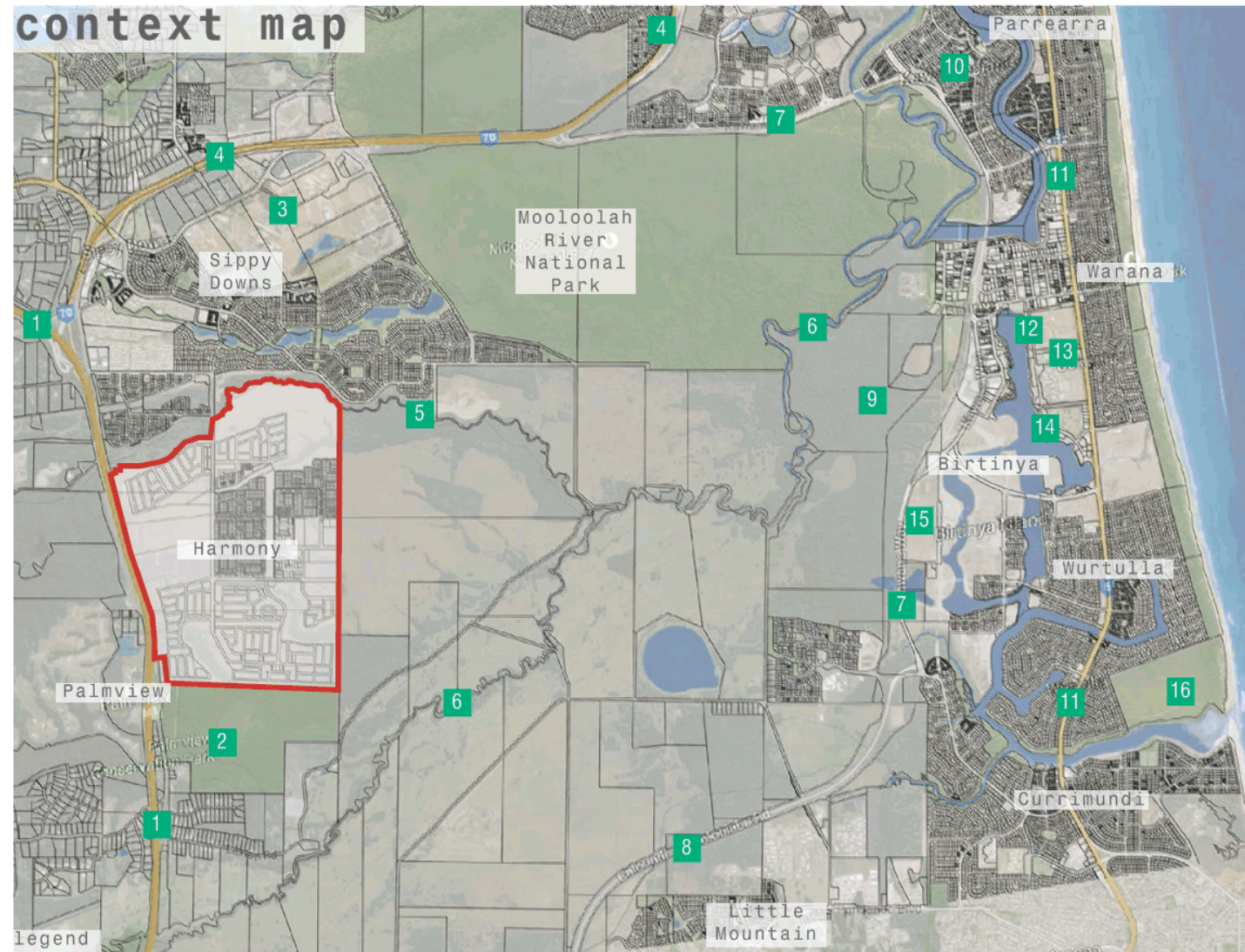
The site is located on the Sunshine Coast approximately seven kilometres from the coastline. The site is highly connected to regional destinations. The centre of Maroochydore is approximately 12 kilometres north. Brisbane is 90 Kilometres to the south and the Sunshine Coast hinterland is 20 kilometres to the west. Sippy Creek runs along the north boundary, the Bruce Highway along the western perimeter and the Palmview Conservation Park borders the southern edge of the development.

Key neighbouring facilities:

- To the north include the University of the Sunshine Coast with major transit station, Sippy Downs Town centre
- To the east include Sunshine Coast University Hospital, Kawana Waters Business village, Kawana Town Centre, Britinya Wetlands, Mooloolah River and Mooloolah River National Park.

The site is a generally flat cleared rural grassed field with a band of existing vegetation along the northern boundary and three vegetated corridors that punctuate the site in the north east, south east and south west corners.

A farm currently occupies the site and is used for grazing cattle.



- | | | |
|------------------------------------|-----------------------------|--------------------------------------|
| 1 Bruce Highway | 7 Kawana Way | 13 Sunshine Coast Stadium |
| 2 Palmview Conservation Park | 8 Caloundra-Mooloolaba Road | 14 Kawana Town Centre |
| 3 University of the Sunshine Coast | 9 Birtinya Wetlands | 15 Sunshine Coast Hospital |
| 4 Sunshine Motorway | 10 Kawana Island | 16 Currimundi Lake Conservation Park |
| 5 Sippy Creek | 11 Nicklin Way | |
| 6 Mooloolah River | 12 Kawana Business Village | |

vision

The harmony vision is to produce an authentically Sunshine Coast community - a true Sunshine Coast living, embracing all that's great about the Sunny Coast.

It will be a community of compact, distinct, well connected, walkable and thoughtfully designed neighbourhood that provide a safe, pleasant and friendly place to live.

The project endeavours to establish an integrated and responsive community, drawing on the physical iconography (Lush hinterland, sparkling ocean and backdrop of Glasshouse Mountains) and the embedded cultural customs of this coastal region.

Harmony aims to capture the very essence of the Sunshine Coast, creating a place to feel truly connected to nature, to a vibrant community, to a vast array of local facilities, and to the arts. The community will offer a range of living options, community facilities and recreation experiences.

The development aspires to deliver an amenity-rich landscape with a range of diverse open spaces and distinctive places which facilitate interaction, exploration, promotes an active and healthy lifestyle, generates creativity and fosters a warm and relaxed community.

Harmony is wrapped in the arms of nature, surrounded by reserves and parks that pull right into the community like green ribbons that thread through all the neighbourhoods. Verdant streetscapes and parks will be shaded and coloured with endemic flora from the hinterland to the coastline, punctuated with inspiring public artworks and interpretive trails that tell the stories of the Sunshine Coast.



design principles

A village way of life

A village that comprises a series of high quality integrated residential neighbourhood offering a diverse mix of dwelling options with a legible street, pedestrian, bicycle and open space network.

Create a variety of open space and recreation opportunities that encourage the pursuit of a healthy and active outdoor lifestyle:

- Green leafy streets with well connected pedestrian footpaths to encourage walking
- Interconnected cycle ways and secure bike parking promote sustainable travel modes
- Versatile park facilities that provide for informal personal fitness activities
- Walkable neighbourhood
- Welcoming streetscape.

Create connections with the intrinsic Sunshine Coast artistic community:

- Integrate art
- Provide opportunities for temporary art installations
- Facilitate outdoor studio spaces.

Authentic Sunshine Coast living

Create a landscape that reinforces the Sunshine Coast identity:

- Relaxed, quiet, slow paced
- Resident community
- Sophisticated, exclusive, human scale
- Creative
- Unspoilt nature, stronger connection to nature
- Intimate.

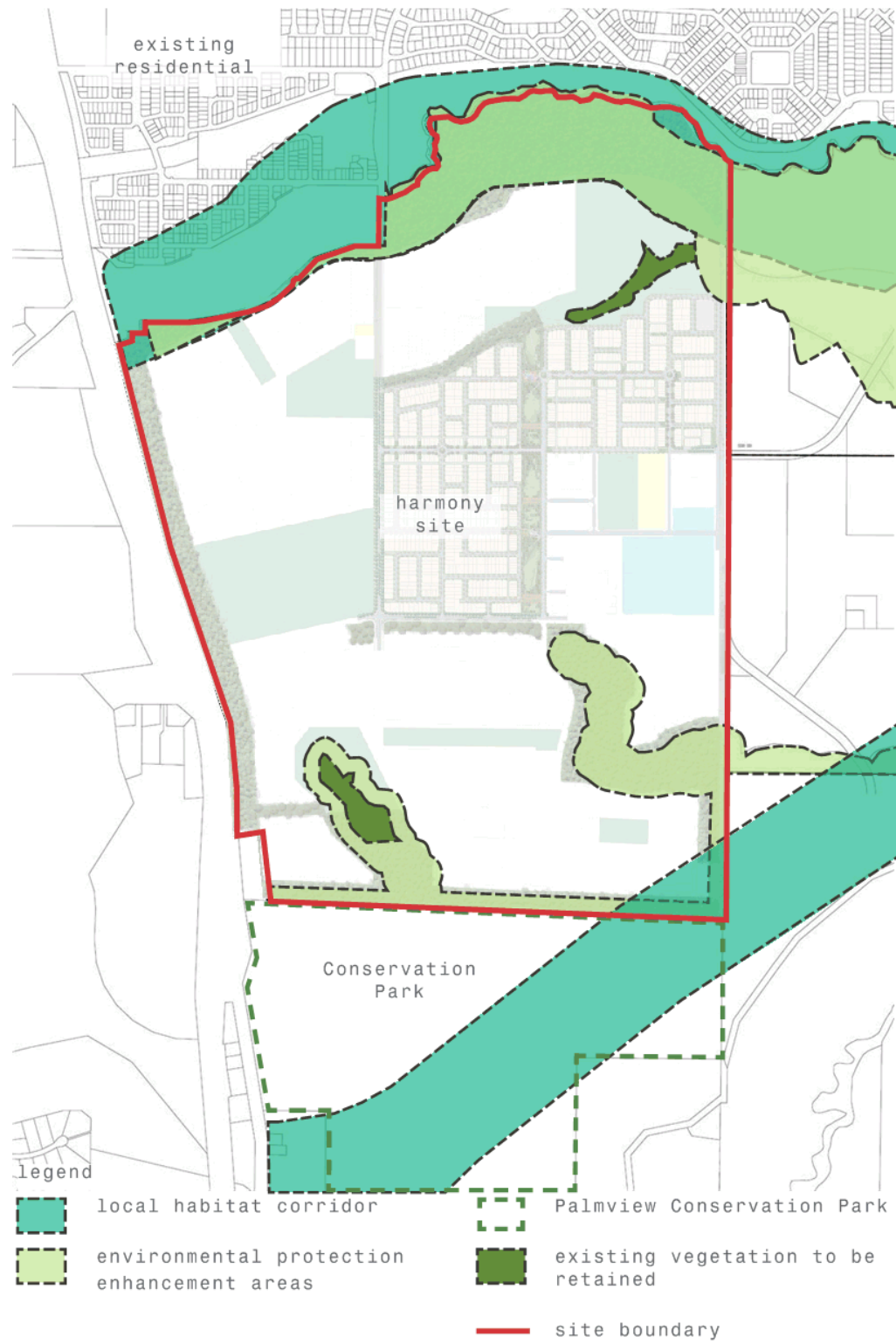
Inspired by nature

Establish a landscape that draws on the spirit of the sea and hinterland environs:

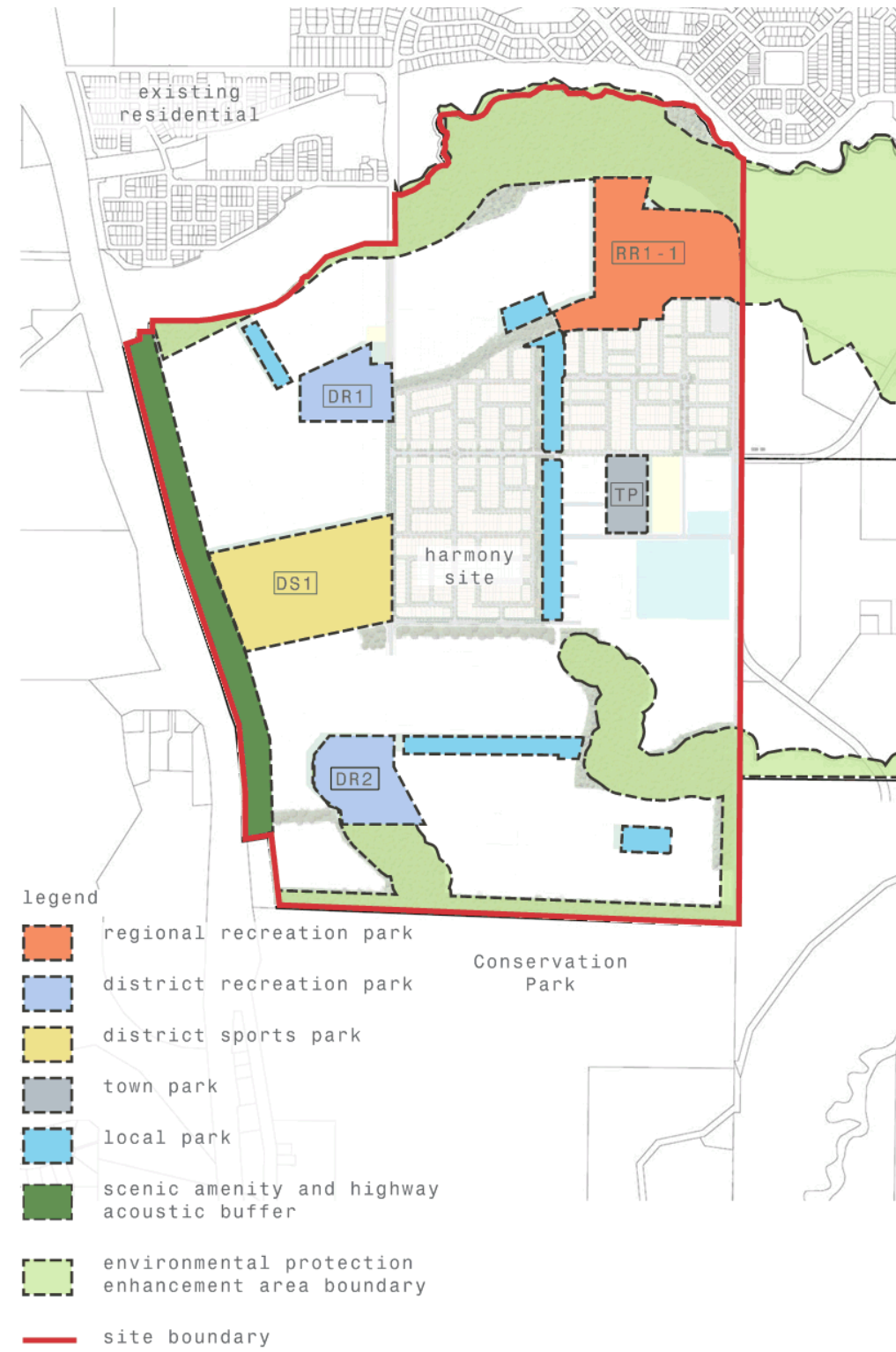
- Showcase the Sunshine Coasts native flora
- Create a fresh, vibrant, diverse landscape that intertwines the laid back nature of the coast with the free spirited artistic lifestyle of the forest.



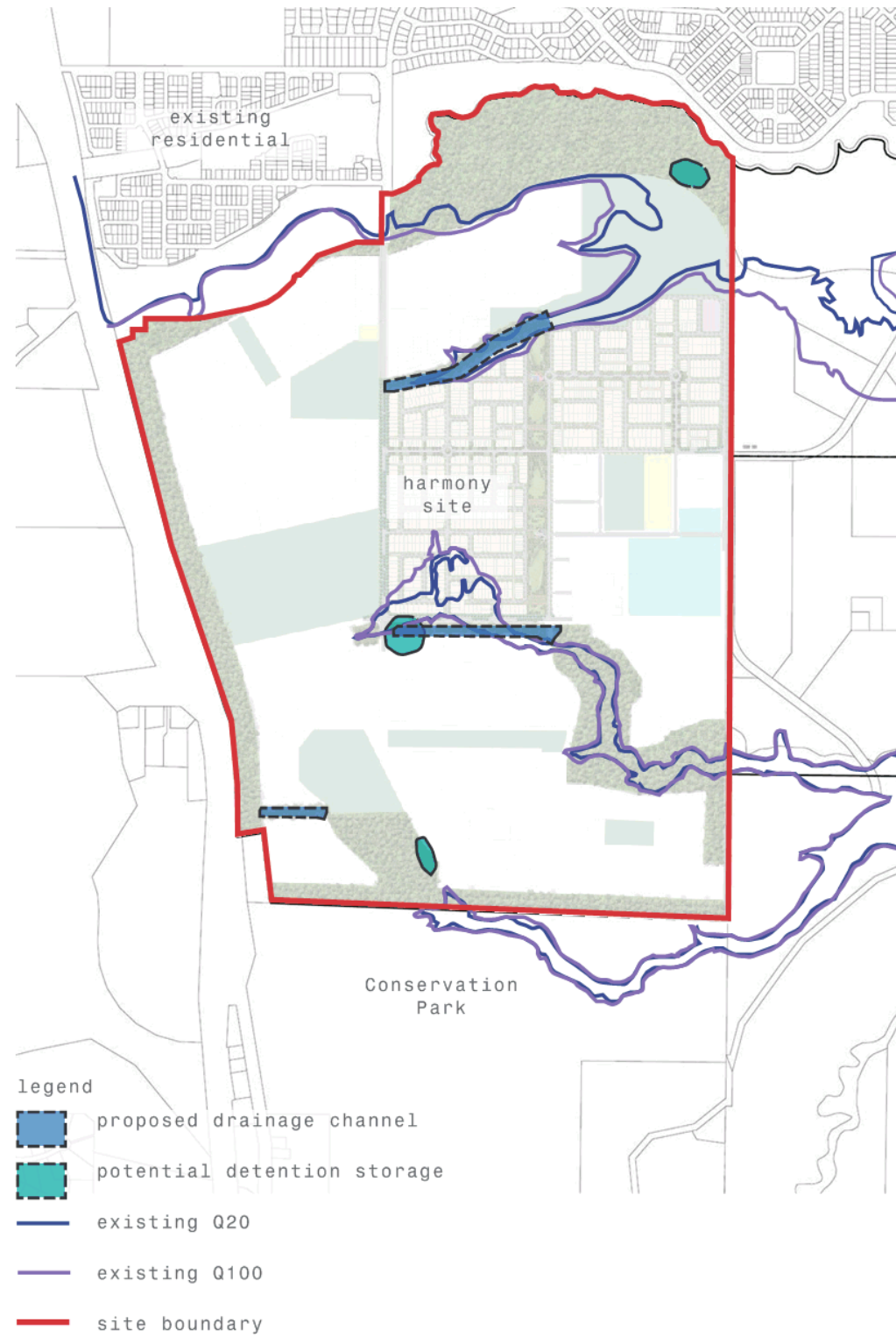
flora and fauna



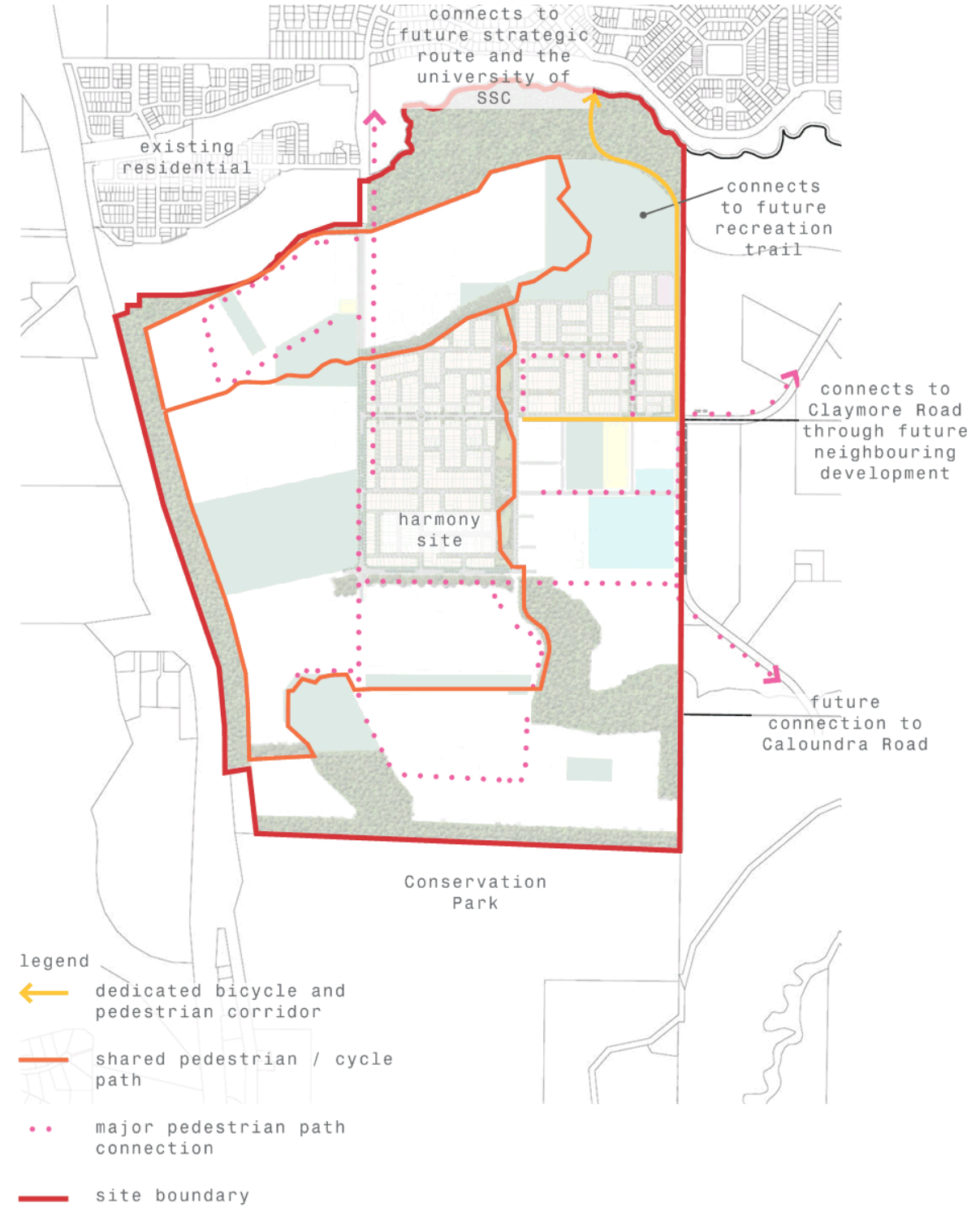
open space



water



circulation



landscape masterplan



A cohesive and inclusive open space network is proposed, that provides a permeable environment allowing people to travel around the development safely and comfortably. Successful car, cycle and walking connections are safe, comfortable, intuitive and easy to use. Incorporating DDA and CPTED principles the design will also provide equitable and equal access on all pathways as well as facilitating driver legibility, minimising the need for excessive signage.

Landscaping elements will be designed for longevity and ease of maintenance. Robust, simple design solutions that respond to and build on the local context will stand the test of time far better than decorative embellishments or add-ons. The use of waterwise, indigenous planting themes across Harmony will provide long term amenity while also minimising ongoing maintenance costs.

Pathways will be made from slip resistant surfaces with neutral colours treatments that minimise pavement marking. Pathways across the site will be in accordance with CPTED requirements and Austroad standards to allow for visual surveillance and clear sightlines. Signage and street furniture elements will be provided to improve amenity and reinforce local character and context.

- | | |
|---|---------------------------------|
| 1 80m Senic amenity and highway acoustic buffer with 3m wide shared pedestrian and cycle path | 7 Community use |
| 2 50m buffer from significant vegetation | 8 Town park |
| 3 State significant vegetation community to be protected, retained and enhanced | 9 Regional recreation park 1 |
| 4 Vegetated drainage corridor | 10 District sports park |
| 5 Local Park | 11 District recreational park 1 |
| 6 Town centre | 12 District recreational park 2 |
| | 13 Indicative green fingers |
| | 14 Harmony entrance |

10 HARMONY

landscape open space strategy

The overall open space strategy seeks to achieve the Sunshine Coast open space strategy vision – ‘Vibrant, green, diverse – a network of parks, reserves, trails, waterways and community hubs nurturing wellbeing, supporting our economy and protecting our lifestyle and biodiversity’. The 4 major parks are linked by vegetated drainage corridors, acoustic buffer and local parks. A 3m wide shared pedestrian and cycle path connects the parks together achieving minimal road crossing within a ‘green’ circuit throughout the harmony community. The collection of parks provides a diverse range of settings and opportunities for recreation. The park hierarchy is achieved by park size, embellishments and recreational opportunities. The Regional and District parks are large parks with a wide range of embellishments that encourage longer stays and service the whole of the Harmony community and beyond. The local parks role is to provide a green relief in the urban environment and provide a unique human scale environment for the individual local communities within Harmony.

The Regional Recreational Park (RR1) sits in the north east corner of site. The park is integrated into the Sippy Creek corridor and provides for an active and broad recreational experience with native recreational trails that connect to the proposed regional recreational trail. RR1 Park has the highest number of park embellishments and numerous informal active opportunities. The park also provides for off street parking and amenity facilities which encourage longer stays for a diverse range of users. This park has also integrated WSUD located in the environmental transition areas that will encourage and support nature-based recreational experiences.

The District Sports Park (DS1) sits along the western edge of the development and is the 2nd largest park in Harmony. The park accommodates formal sporting and recreation activities through the provision of ovals, courts and circuits. These facilities combined with on site parking and amenity buildings encourage longer stays and reach the wider Sunshine Coast community

The District Recreational Park 1 (DR1) is located to the west of the Major Collector Road and is connected to the RR1 Park by way of a 3m wide shared pedestrian and cycle path that runs along the side of a drainage corridor. The DR1 Park is 5.4 ha in size and is the third largest park in the development. This park functions as a community recreational, social, cultural and leisure space that will also facilitates a community area. This park has also integrated WSUD (located outside the park footprint area) that will encourage and support nature-based recreational experiences.



landscape open space strategy

The District Recreational Park 2 (DR2) is situated in the south of the development. DR2 is 4.8 ha in size and is the 4th largest park in the development. This park is characterised by existing vegetation and environmental protection enhancement areas. This park functions as a community recreational, social, cultural and leisure space. This park has integrated WSUD located within the environmental transition areas that will encourage and support nature-based recreational experiences. Both district recreational parks have embellishments consistent with the Sunshine Coast Council embellishments standards that encourage longer stays.

The Town Parks role in the network is to provide a green relief within the high density town centre. This space will be the prime location for events, celebrations and community gatherings of a civil and community nature. The park is intended to enable a community facility, and a diverse range of recreational and social spaces.

The Local Parks will provide the facilities and functions that predominantly serve the needs of the local community. The Local Parks will maintain a unique character that reflects the local community's identity and be located within 500m of residents to achieve easy walking distance of residential homes. It is intended the local parks will form a link between the Regional, District and District Sports Park creating an open space network of pedestrian/bikeway systems. All local parks will be embellished in line with the Sunshine Coast embellishments standards reinforcing the parks hierarchy of the harmony community.

The scenic amenity and highway acoustic buffer forms an integral part of the open space network. On top of forming a visual screen and buffer between the harmony residents and the Bruce Highway, this landscape strip also provides a key pedestrian and cycle link along the western edge of the development. A 3m wide shared pedestrian and cycle path is proposed along the edge of the buffer to connect the north and south neighbourhoods while also creating connections to Sippy Creek, DR1, DS1, DR2 and the future recreational trails.

The northern and southern edge of the development is defined by existing vegetation and environmental protection areas. It is proposed that these areas be protected, enhanced and rehabilitated to increase biodiversity, suitability and scenic amenity. Where these areas connect with park land the parks function and embellishments will not adversely affect the environmental protection zones. It is proposed that the parklands further enhance the communities' experience of these environmental areas by implementation of recreational trails, interpretive signage and strong pedestrian and cycle links.



local park strategy

key principles:

1. A number of local parks have been located throughout the development to provide the Harmony community access to a local park that is within 500m of their front door.
2. The local parks have been located, sized and shaped to create a network of cycle and pedestrian paths that connect all open space within the development.
3. A range of embellishments and diverse landscape settings will ensure the local parks provide informal recreational, social, cultural and leisure activities.
4. Through the use of planting, art, materials and equipment, each local park will have a unique identity that reflects the local communities' character.
5. Provide safe legible connections from residents homes to the local parks.
6. Functional lighting will be provided to ensure safe use during dark periods while amenity lighting will contribute to the ambiance and character of the park.

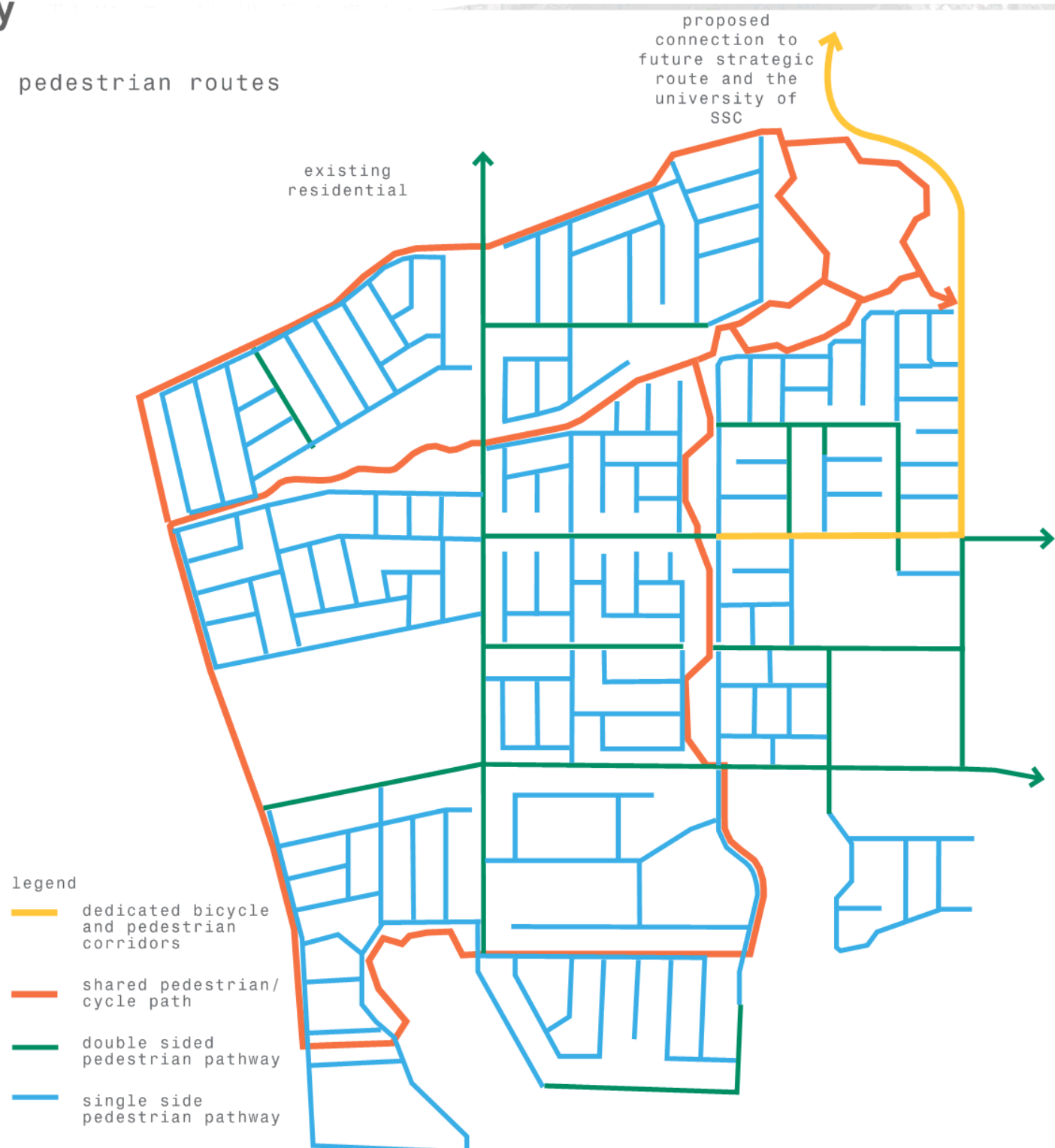


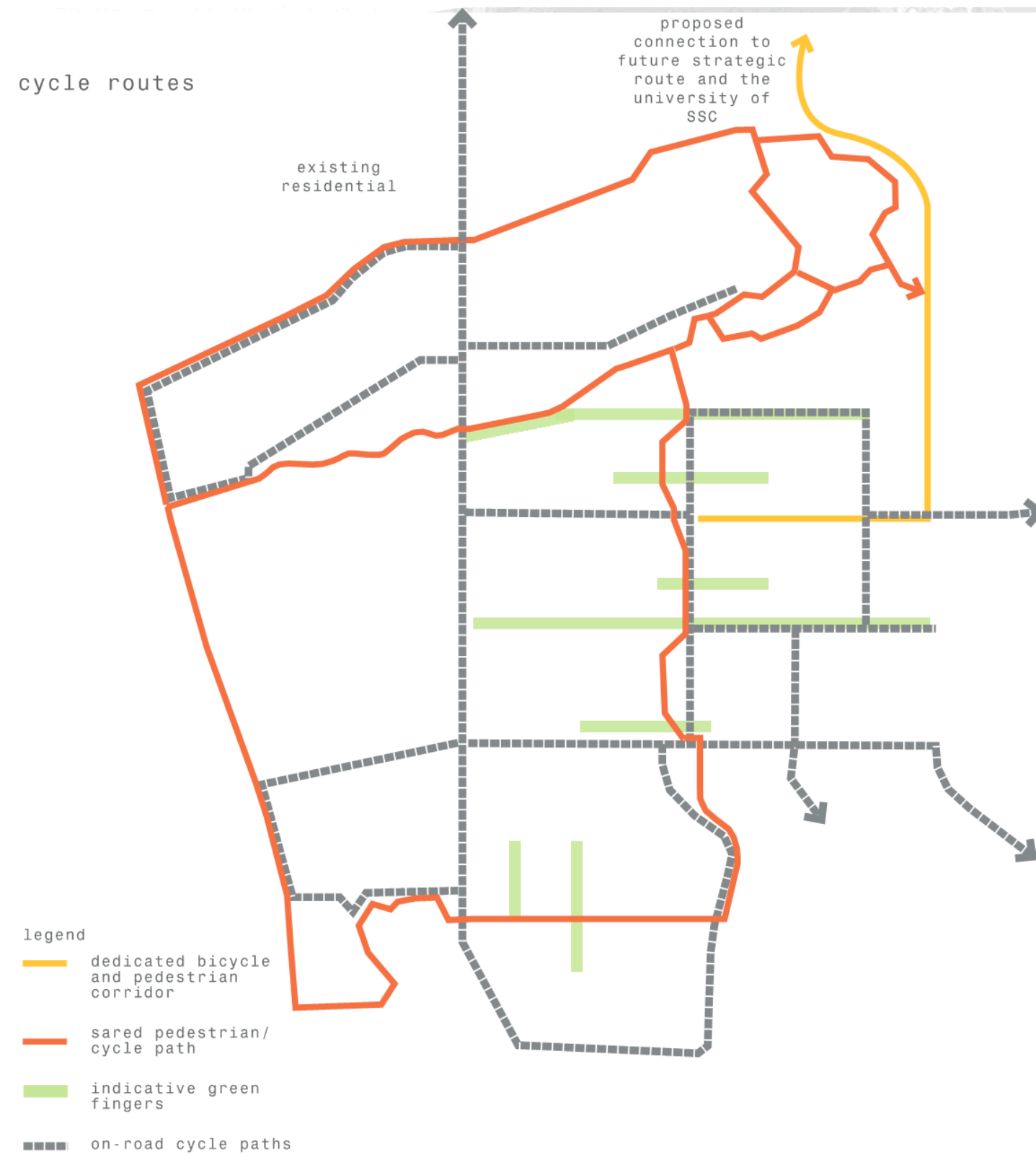
pedestrian and cycle strategy

key principles:

1. An interconnected network of paths that provide the community with strong connections and links to the whole of the development and the wider Sunshine Coast area is planned.
2. A safe, sustainable and amenity rich landscape that encourages sustainable forms of transport is proposed.
3. A 'green' network of shared cycle and pedestrian paths has been proposed through the local parks, buffers, drainage corridors and wider open space to provide numerous off road cycle ways for safe commutes through the development.
4. Footpaths provided on the majority of the streets promotes a walkable neighbourhood.
5. Secure cycle parking will be provided in all parks and community hubs to encourage sustainable modes of transport.
6. Dedicated on road cycle ways are provided on major roads strengthening the Harmony cycle network.
7. A dedicated bicycle and pedestrian corridor is located to the east of the development connecting the site to the wider Sunshine Coast community linking up with proposed future strategic route.
8. Key park streets or 'Green Fingers' have been identified that are embellished with additional planting, feature trees and decorative pavement to enhance pedestrians streetscape experience, strengthen the connection to the park and encourage pedestrian use of the streetscape and parks.

pedestrian routes

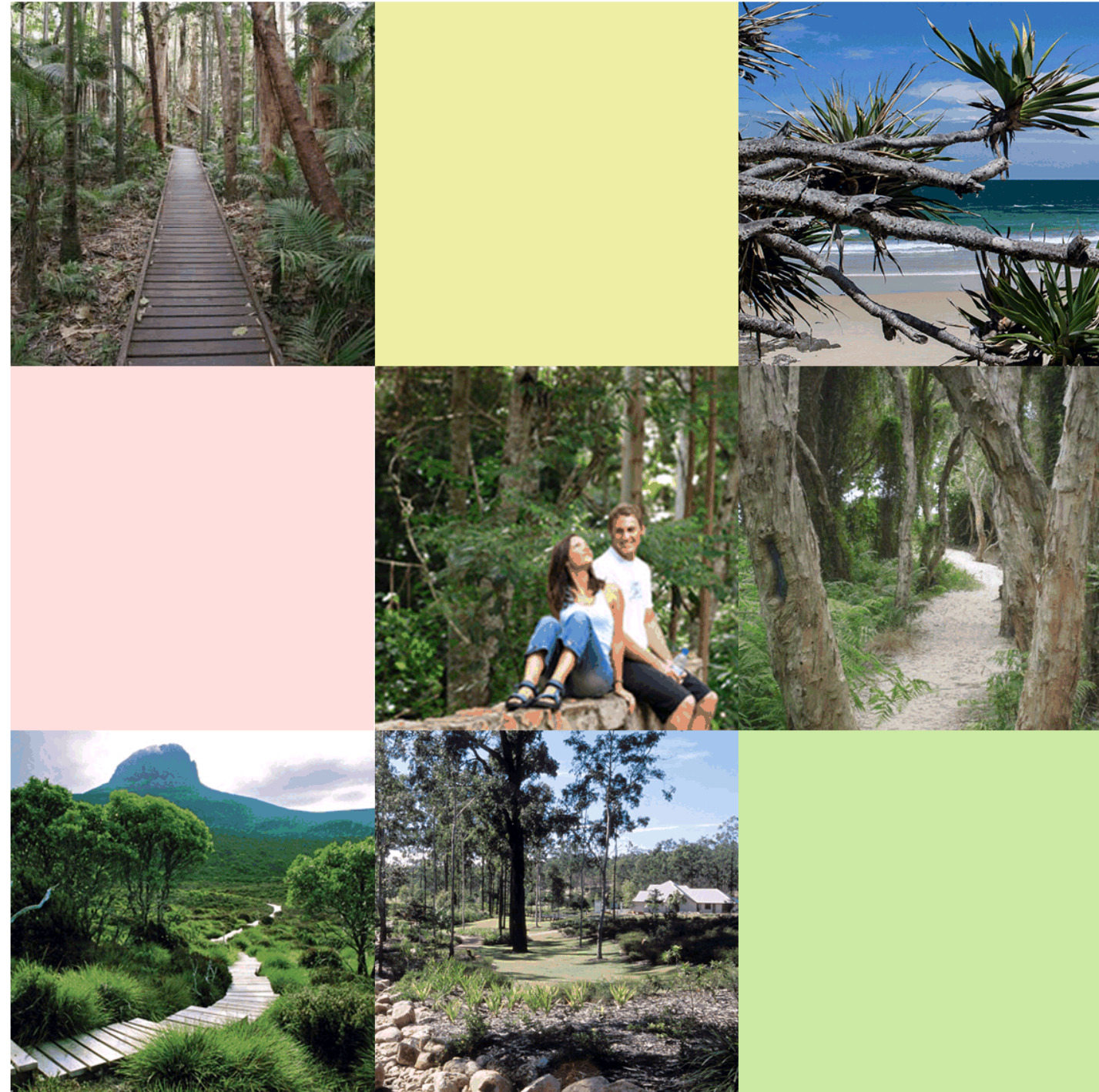




planting strategy

key principles:

1. Proposed mature trees in the streetscape and parks will create a strong green leafy backdrop to the community.
2. Plantings to the streetscape and parks will showcase endemic and local native species of trees, shrubs and groundcovers.
3. Plant characteristics will be used strategically to reinforce precincts, compliment built form and reinforce links to the greater Sunshine Coast natural region incorporating foliage from the green of the hinterlands to the coastal blues.
4. Plant species have been chosen from the Sunshine Coast Council (SSC) Open Space Landscape Infrastructure Manual (LIM) Plant Palette and Water By Design Bio-retention Technical Guidelines document. Additional feature species have also been added to the list.
5. All existing trees to be retained are to be protected in accordance with Sections 6 and 8 of the Preliminary Site Setup section of the SCC LIM – Planning for tree protection – construction sites and Protection of trees on construction sites.
6. All new tree stock will be in accordance with AS 2303:2015 Tree Stock for Landscape Use.



indicative plant palette

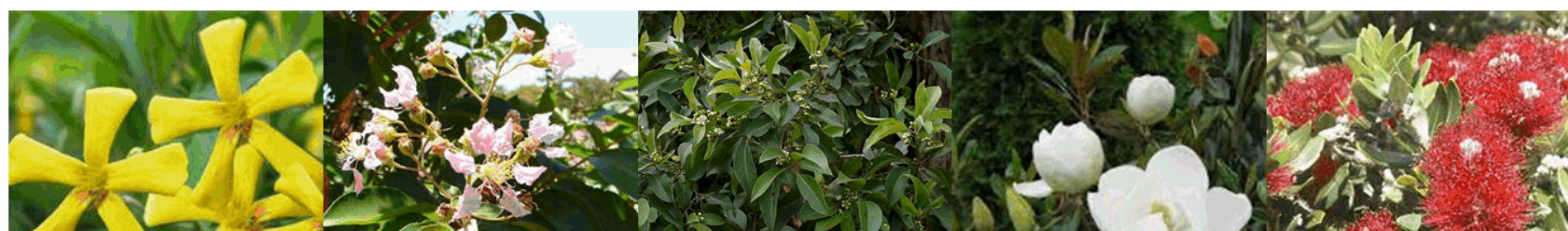
general tree species



agathis robusta araucaria cunninghamii backhousia citriodora brachychiton acerifolius elaeocarpus grandis



elaecarpus eumundi elaeocarpus reticulatus flindersia australis jagera pseudorhus hibiscus tiliaceus rubra



hymenosporum flavum lagerstroemia archeriana lophostemon suaveolens magnolia little gem metrosideros excelsa

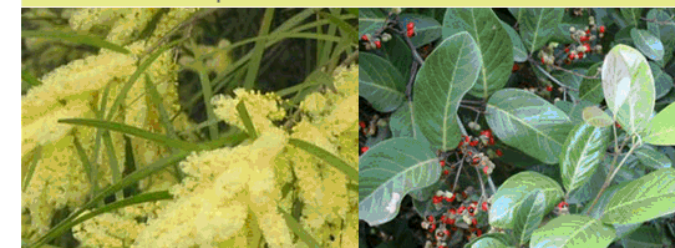


pandanus pittosporum rhombifolium plumeria obtusa stenocarpus sinuatus sterculia quadrifida



syncarpia quadrifida xanthostemon chrysanthus

wsud tree species



acacia floribunda alectryon coriaceus



banksia integrifolia callistemon viminalis



elaecarpus obovatus lophostemon suaveolens



melaleuca linarifolia melaleuca quinquenervia



syzygium luehmannii waterhousia floribunda

indicative plant palette

general shrub and groundcover species



acacia fimbriata 'dwarf' austromyrtus dulcis austromyrtus 'blushing beauty' babingtonia 'dwarf'

wsud shrub and groundcover species



austromyrtus dulcis babingtonia 'dwarf' banksia spinulosa 'dwarf'



dianella spp. hibbertia scandens grevillea cooroora leptospermum 'pink cascade'



banksia robur callistemon spp carpobrotus glaucescens



lomandra spp myoporum parvifolium dwarf syzygium spp syzygium 'pink cascade'



crinum pedunculatum juncus usitatus lomandra spp



syzygium 'tiny trev' vitex ovata westringia 'jervis gem' xanthostemon 'little penda'

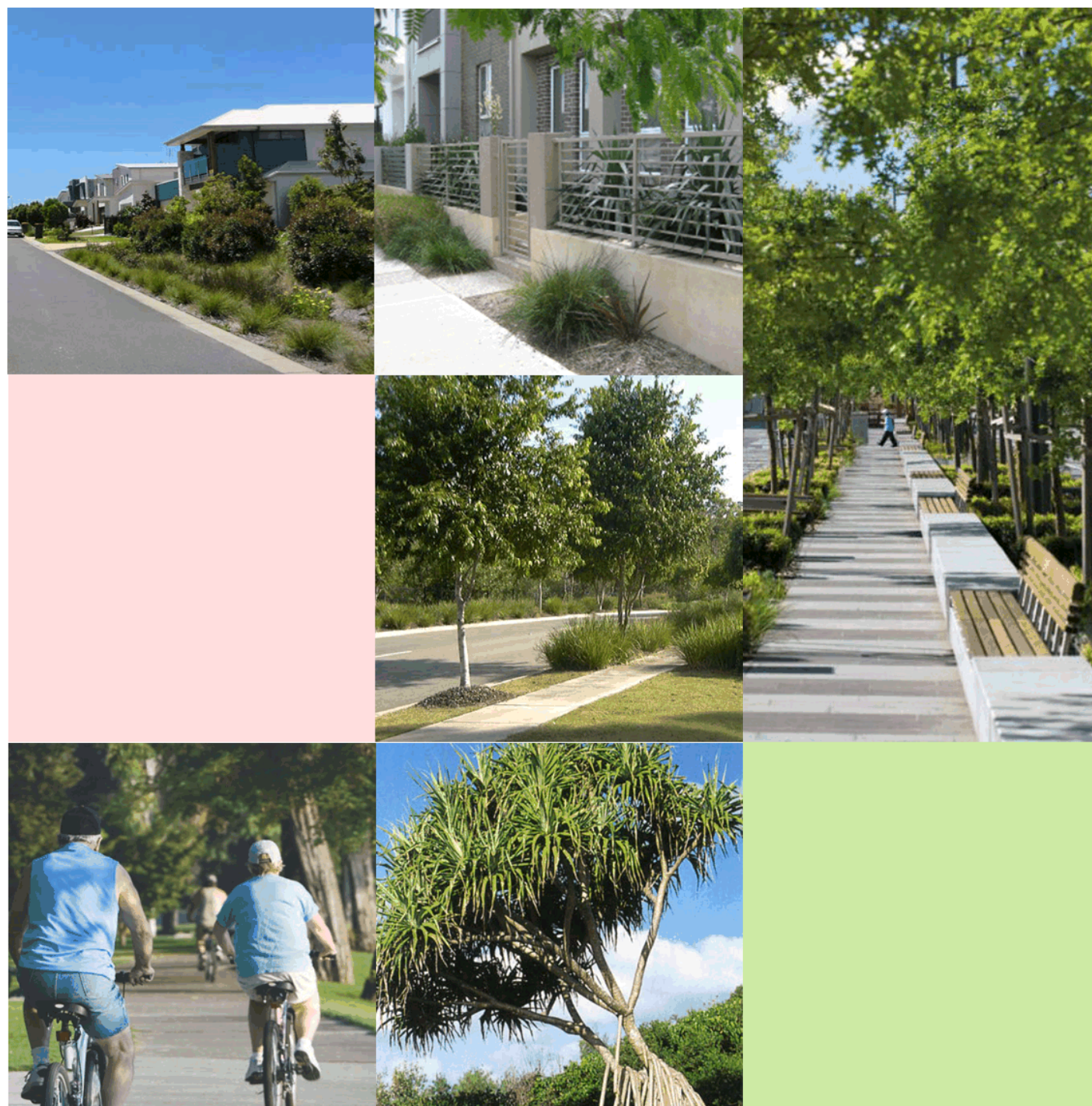


melaleuca 'claret tops' melaleuca thymifolia xanthorrhoea fulva

streetscape strategy

key principles:

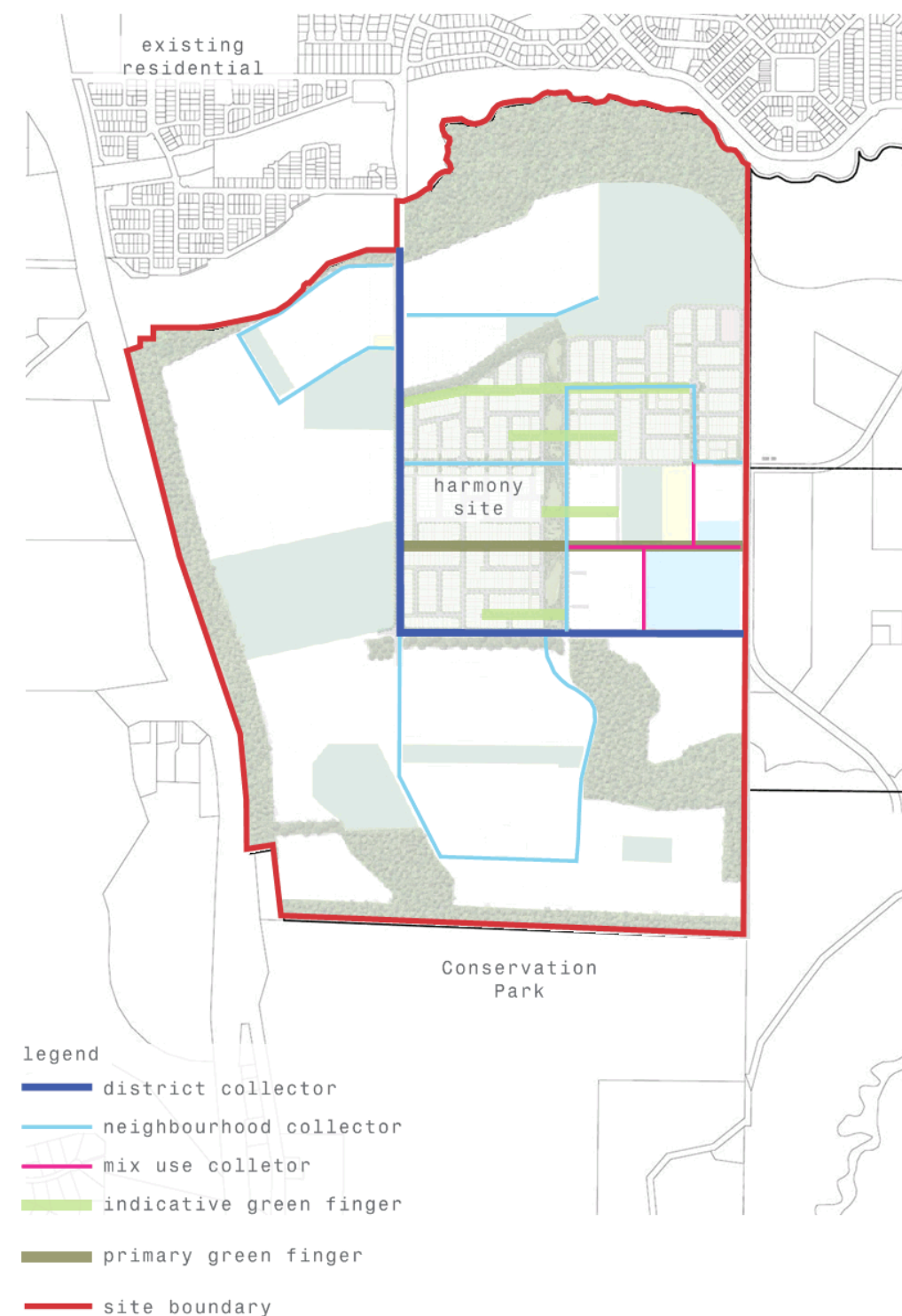
1. Informal clumps of native tree plantings will line the access streets providing shade, relief from glare and a soft aesthetic in the development, to encourage pedestrian use.
2. Main collector streets will be dominated by a more formal approach using key species in an avenue arrangement. Feature trees will be located at the end of key view lines, nodal points and primary activity zones.
3. Establishing a hierarchy within the streets strengthens wayfinding and reinforces pedestrian and cycle connections through the site.
4. Each precinct will be defined by the use of signature species and unique plantings while a consistent thread of streetscape language will maintain a consistency through the development resulting in a holistic community at Harmony.
5. The front facades of buildings, front courtyards, fences and garden areas are the major source of visual interest to the passer-by and contribute to the public realm outcomes. Fences in particular influence the overall appearance of the neighbourhoods. As an integral part of the neighbourhood emphasis will be placed on design, size and treatment of fences on other barriers. The character should always reflect and complement that of the main building.
6. Park connecting streets or 'Green Fingers' bridge the connection between park and neighbourhood by extending the character and appeal of the park environment into the surrounding streets. These 'Green Fingers' are identified by the use of a park feature tree overlaying the road type tree palette. Use of groundcover planting and feature pavement reinforce the visual cue and create a way finding element for pedestrians. This pedestrian navigational device is not associated with the road typology but rather another layer of detail to enhance the pedestrian's experience of the local neighbourhood and local park.



indicative street tree species

District collector	
primary tree	- flindersia australis
secondary tree	- xanthostemon chrysanthus
tertiary tree	- waterhousia floribundia (WSUD)
feature tree	- araucaria cunninghamii
Neighbourhood collector	
primary tree	- lophostemon suaveolens
secondary tree	- lagerstromia archeriana
tertiary tree	- waterhousia floribunda (WSUD)
feature tree	- agathis robusta
Mixuse collector	
primary tree	- elaeocarpus eumundi
secondary tree	- waterhousia floribundia
tertiary tree	- lophostemon suaveolens (WSUD)
feature tree	- pandanus tectorius
Green Finger	
	- brachychiton acerifolius
	- hibiscus tiliaceus rubra
	- stenocarpus sinuatus
Access Streets	
primary tree	- alectryon coriaceus
	- elaeocarpus obovatus
secondary tree	- lophostemon suaveolens
	- backhousia citriodora
	- hymenosporum flavum
	- xanthostemon chrysanthus
	- syzygium luehmannii
tertiary tree	- melaleuca quinquenervia (WSUD)
	- melaleuca linarifolia (WSUD)
	- banksia integrifolia (WSUD)
	- callistemon viminalis (WSUD)
	- waterhousia floribundia (WSUD)
feature tree	- pandanus tectorius
	- magnolia little gem
	- stenocarpus sinuatus
	- pittosporum rhombifolium
	- lagerstomemia archeriana
	- metrosideros excelsa

street tree plan





Informal clumping of locally native tree planting throughout streetscape generates shade reduces glare and creates character and amenity in the community.

1.8m wide concrete footpath to one side of street provides for a safe, comfortable and intuitive pedestrian movement throughout Harmony.

typical streetscape character

green fingers

key principles:

1. Create a stronger connection between open space and the immediate community by extending the planting palette of the park into the streets.
2. Aid in way-finding throughout the Harmony community through visual cues.
3. Enhanced pedestrian streetscape experience by providing additional street embellishments in the form of understory planting, feature pavement and feature trees.
4. Create stronger connection between nodes and activity centres by identifying key routes with additional streetscape planting and local signage.

Low maintenance groundcover planting under trees increase the amenity of the street, strengthens the link to the open space and distinguishes the green fingers from typical access streets.

Feature tree planting matching the park palette continues the open space character into the streetscape creating a stronger visual connection to the parkland.

Opportunities to incorporate art embellishments into the footpath finishes. Integrating art into the wider streetscape and not just focusing elements into the parks and communities centres achieves a holistic approach to incorporating art projects into new communities.



typical green finger character

Where key infrastructure is being linked, an additional footpath can be added to achieve a primary green finger. The addition of the primary green finger strengthens the Harmony community network creating a safe, comfortable, attractive and intuitive pedestrian link.

Feature tree planting matching the park palette continues the open space character into the streetscape creating a stronger visual connection to the parks.

Low maintenance groundcover planting under trees increase the amenity of the street, strengthens the link to the open space and distinguishes the green fingers from typical access streets.

Opportunities to incorporate art embellishments into the footpath finishes. Integrating art into the wider streetscape and not just focusing elements into the parks and communities centres achieves a holistic approach to incorporating art projects into new communities.

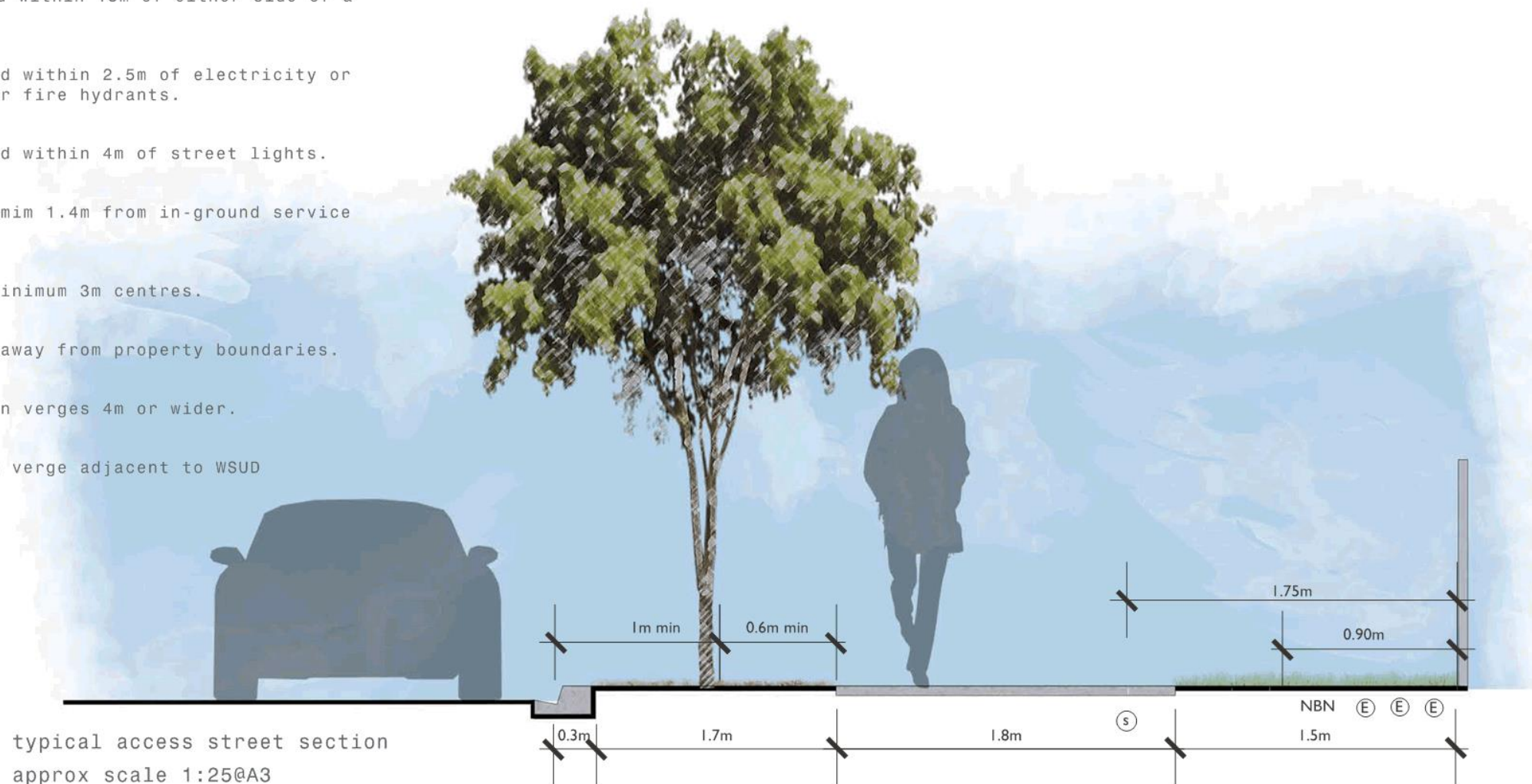


primary green finger character

streetscape tree location

key principles:

1. Street trees locations will adhere to Sunshine Coast Street Tree Location Guidelines unless noted differently below.
2. Trees to be installed a minimum 1m from face of kerb and 0.6m from edge of path.
3. Trees should not be located within 3m of footpath crossover or driveway.
4. Trees should not be located within 15m of either side of a pedestrian crossing.
5. Trees should not be planted within 2.5m of electricity or telephone poles, pillars or fire hydrants.
6. Trees should not be planted within 4m of street lights.
7. Trees to be located a minimum 1.4m from in-ground service locations.
8. Trees to be planted at a minimum 3m centres.
9. Large trees to be planted away from property boundaries.
10. Trees to be only planted on verges 4m or wider.
11. Trees not to be planted in verge adjacent to WSUD



streetscape tree location





typical plan
approx scale 1:100@A3

materials and finishes strategy

key principles:

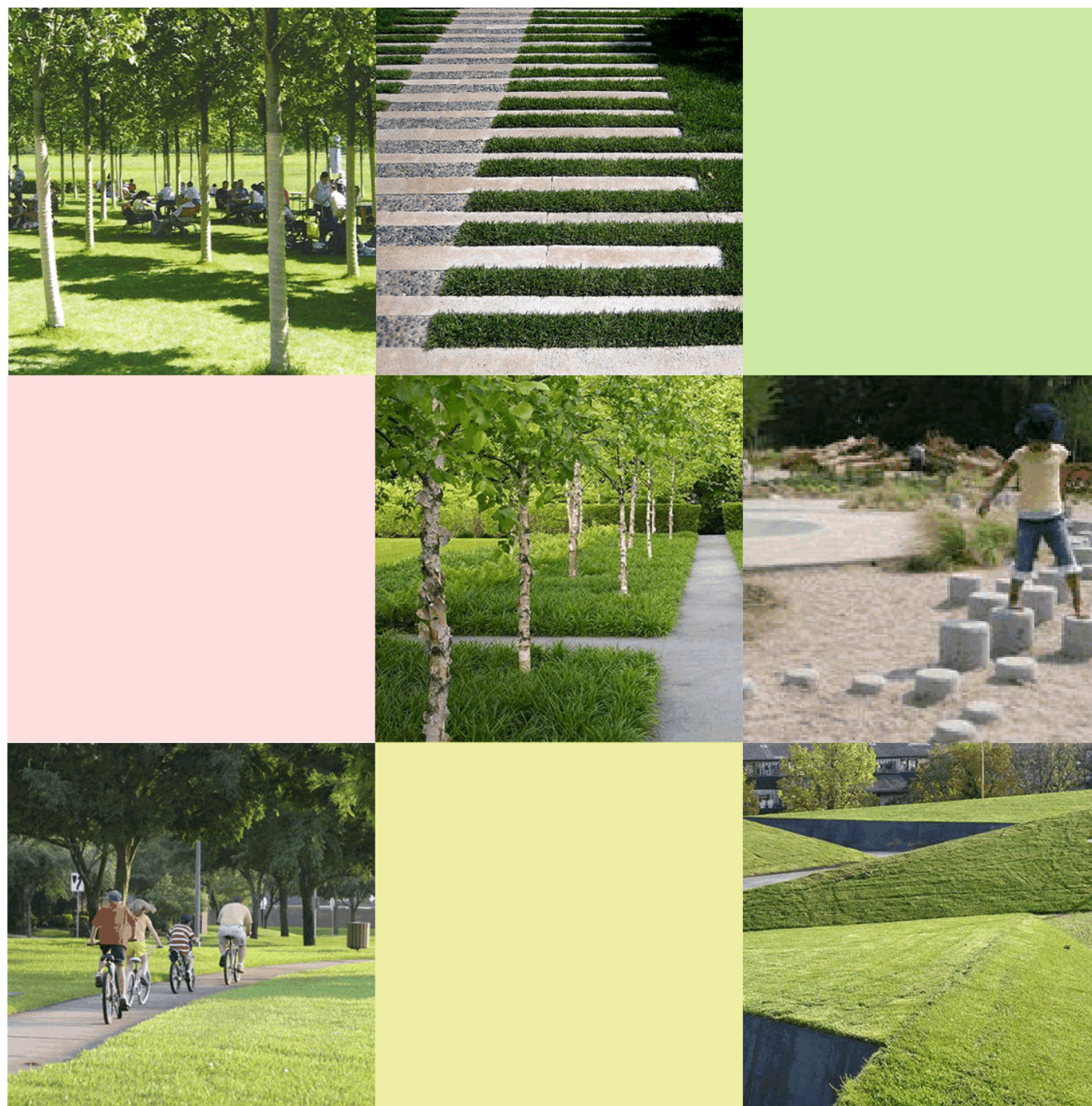
1. The selection and use of materials in this development will form a framework for the character and theming of the parks and residential precincts.
2. Local artists and craftspeople will be engaged to assist with the creation of public artworks and landscape elements that interpret the intrinsic vernacular and develop a new, common design language for the cohesion of the community.
3. The palette will take cues from the sandy beaches to the east and the lush hinterland to the west.
4. Where possible, endemic materials will be sourced.



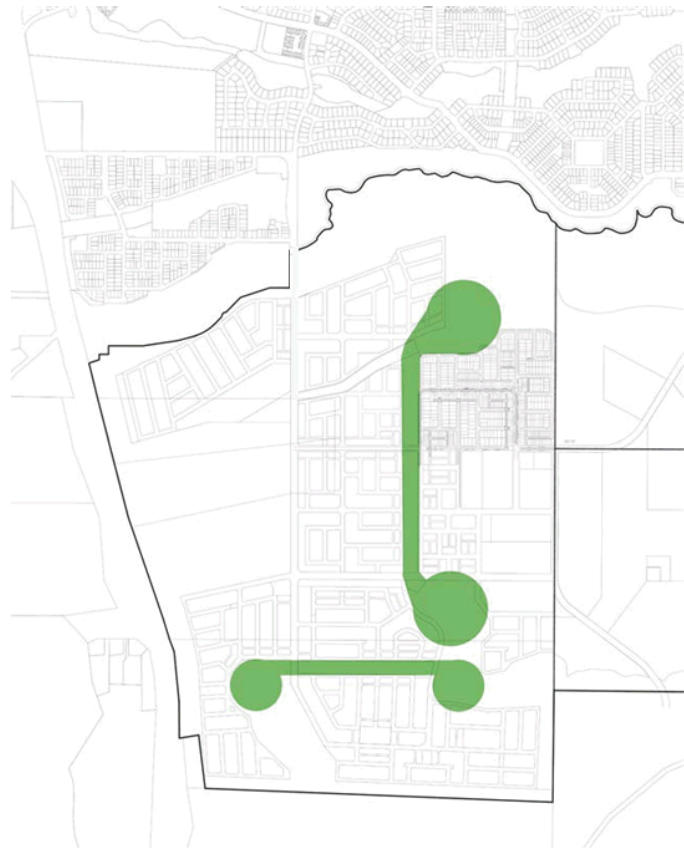
local linear parks

key principles:

1. The Local Linear park forms a green spine through the development. It connects the proposed regional recreational park to the north to the existing vegetated environmental protection and enhancement corridor to the south.
2. The layout is a contrast from the neighbouring natural parklands. This juxtaposition ensures a diverse range of settings, facilities and opportunities with which the community of Harmony can engage. The parks design encourages social interaction and engagement.
3. High quality facilities with meaningful association to the natural landscape along with integrated public art throughout the site reinforce the sense of place.
4. The park provides a number of formal and informal recreational opportunities providing residents with a variety of activities. Activity nodes and uses are defined by different landscape zones.
5. Park plantings will be selected for both aesthetics and function. Structured planting near entry points, feature areas, and activity nodes generate a legible welcoming landscape.

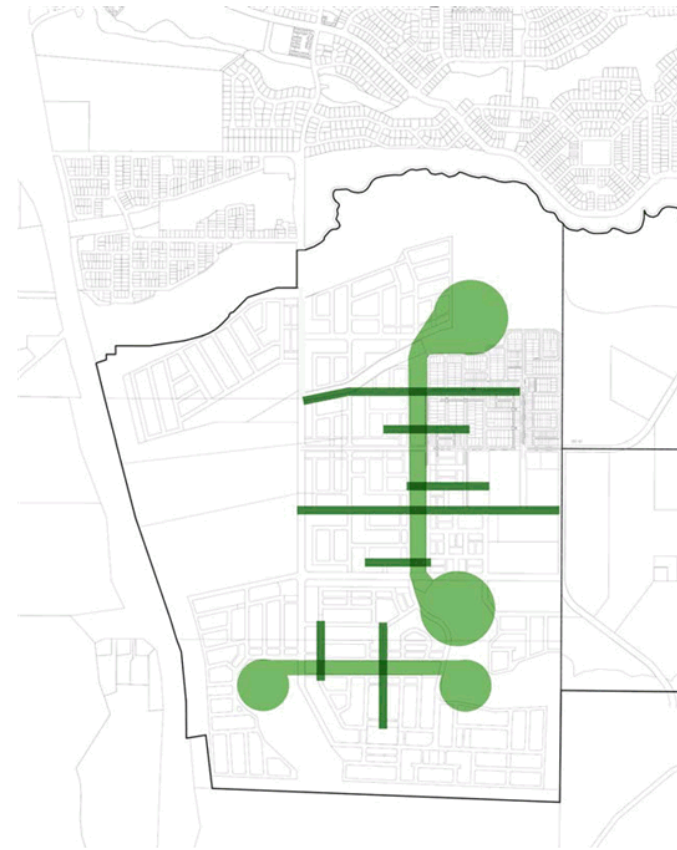


local linear park (northern & southern) - linkages



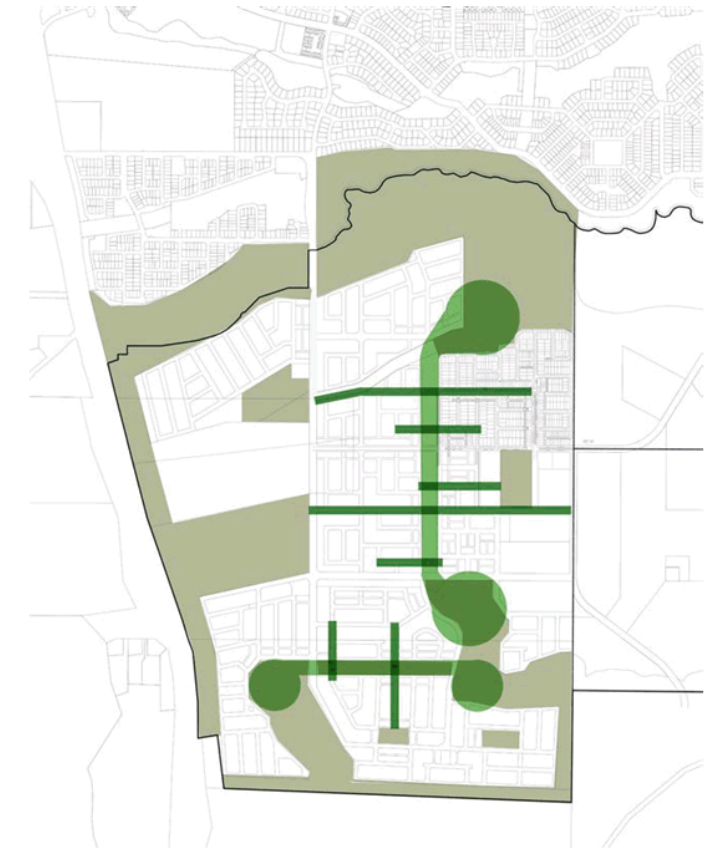
Green Linkage

- Connects the north and south of the development
- Provides a fauna corridor
- Strengthens the habitat network
- Strengthens the cycle and pedestrian connections.



Green Fingers

- Ensures a strong connection between public open space and streetscape
- Acts as a wayfinding device
- Forms key cross park connection
- Defines high use and intense embellishments
- Is a focal point at the end of view lines



Green Network

- A green network of parks, environmental areas and strong green pedestrian links is formed
- Open space experience continues throughout streetscapes linking the parklands

local linear park (northern) - structure

Schedule 6 of the Infrastructure Agreements describes local parks as: 'primarily used by the community for informal recreation, social, cultural and leisure activities which may provide for other complementary values'.

The Local Linear Park is a series of local parks with their own facilities and identities. Each park segment allows for active kick-about, intimate gathering spaces and formalised/informal play. It is intended that the local community that the park segment facilitates will access the diverse range of facilities within 500m from their front door. The embellishments within the local park are low key and are consistent with Sunshine Coast Palmview Structure Plan embellishments standards.

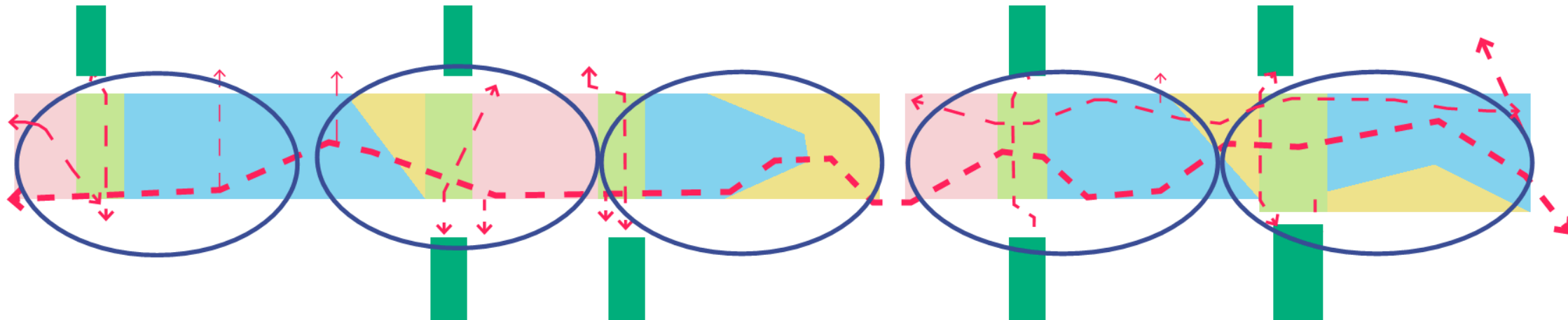
By connecting the parks together, several advantages have been recognised; flora and fauna corridor linking the north remnant vegetation to the south existing vegetation, facilitates Q100 flood flows, creates a strong green pedestrian and cycle circuit throughout the development and provides a lush green amenity spine in the middle of the Harmony community.

The park is designed to take all flood water above Q20. The profile of the park maintains a grade of greater than 1:20 slope from the back of verge then forms a wide shallow overland flow path. This maximises usable space for park embellishments while maintaining and preserving accessible entrances along the total length of the park. In the north the water outflows into the drainage corridor. In the south a pit with protective grates and screen planting will collect the runoff and outflow into the drainage corridor on the southern side of the District Collector. Please refer to Calibre drawings x-15-000256-SK11-SK17 for details.

Legend

- Passive recreation open space
- Active recreation open space
- Intimate gathering space
- Activity node (Intensive use and concentration of facilities)
- Major cycle and pedestrian link
- Cross park neighbourhood connections
- Minor street/park access points
- Individual local parks
- Indicative green finger

NOTE: Both the northern and southern local linear parks will adopt the same principles outlined in this report. The northern local linear park has been used as a case study in this report, however both will be addressed in future ROL applications.



local linear park (northern) - landscape plan

Local Linear Park Narrative

The park is composed of grassed fields, canopy trees, activity nodes and a 3m wide shared pedestrian and cycle path that zigzags its way along the park connecting the north and south of the development. A series of green fingers cut across the park and extend into the neighbourhood streets defining primary entrance points and activity nodes. A grid of trees march across the park, reminiscent of the neighbouring forested hinterland. The 'urban forest' clears to circumscribe kick-about areas and informal picnic grassed nodes and intensify at the 'green fingers' identifying key park facility locations. Grassed decisive mounds cut along the edges of the grassed meadows forming enclosure, screening from the roads and providing viewing embankments for spectators of the kick-about spaces. On street WSUD devices have been integrated into the park edge to form a consolidated design language and homogeneous landscape character.



scale 1:1250 @A3

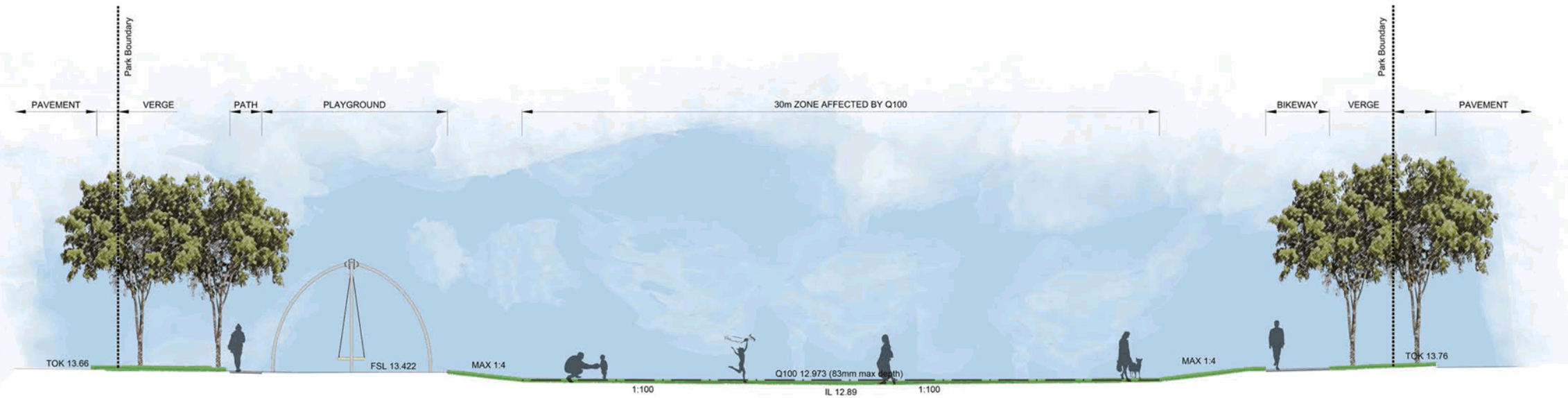


Legend

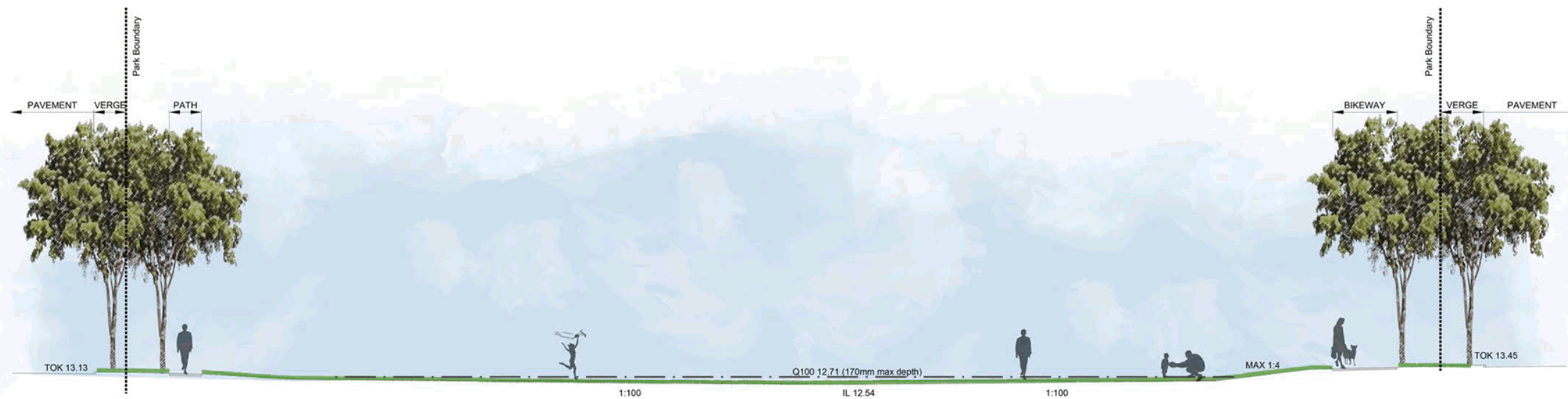
- 01 indicative green fingers
- 02 formal and informal play elements paired with picnic shelters and drinking fountains
- 03 3m wide shared pedestrian/cycle path
- 04 picnic shelter
- 05 feature turf mounds
- 06 kick-about field
- 07 intimate gathering space
- 08 passive open space
- 09 terraced lots access path
- 10 drainage corridor buffer planting
- 11 exercise/fitness facilities, outdoor studio opportunities, seating and structured planting
- 12 possible art opportunities to road crossing
- 13 localised culvert crossing



 scale 1:1250 @A3



section aa
 scale 1:200@A3



section bb
 scale 1:200@A3

key stormwater principles:

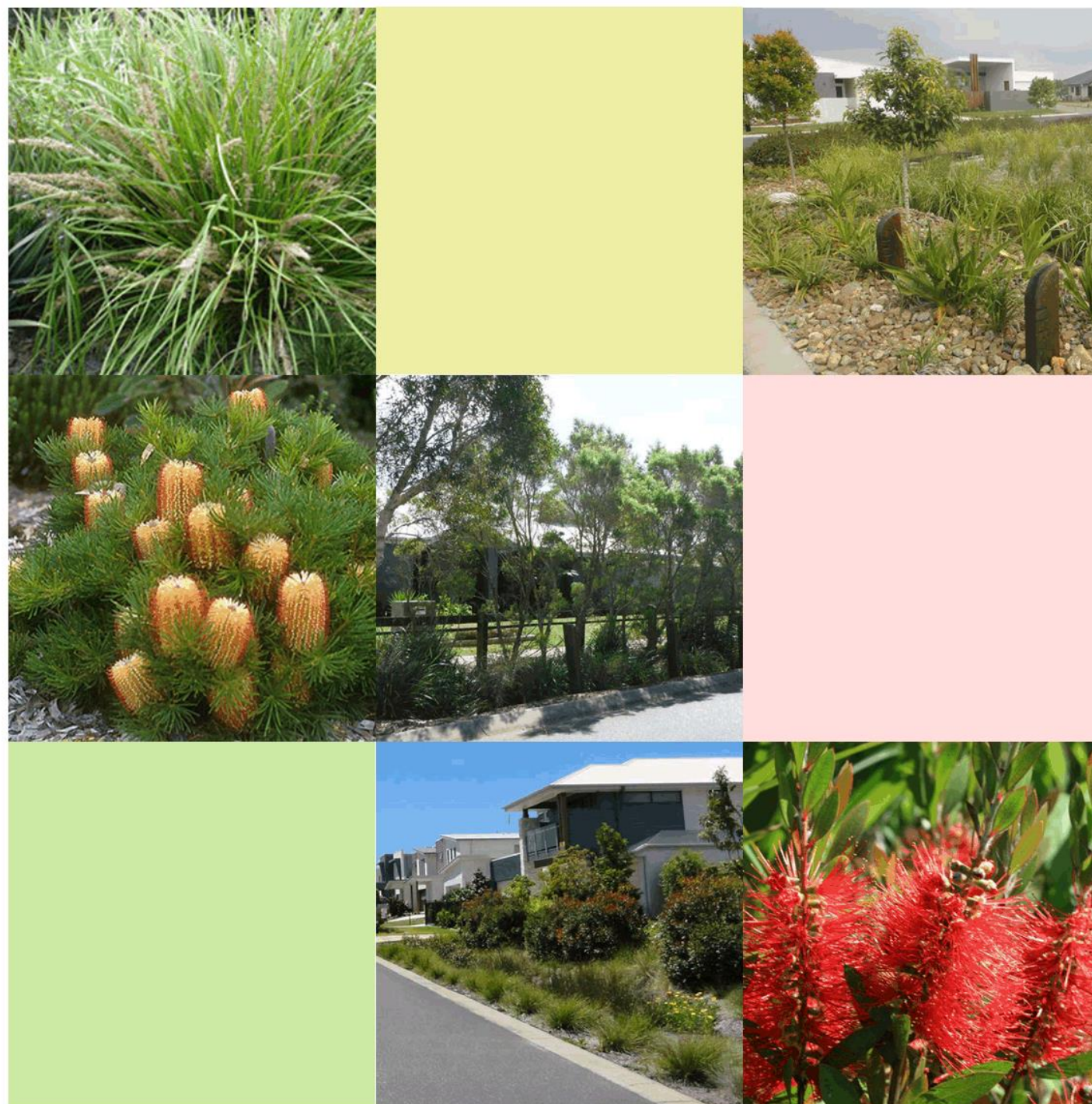
1. Park runoff up to Q2 piped underground
2. Park runoff up to Q20 will be conveyed through the park via sheet flow. All external catchment runoff up to Q20 will be managed through stormwater infrastructure external to the park and will not enter the park.
3. Where cross park pedestrian crossing points occur, localised culverts will be utilised.
4. Runoff from the wider catchment (external to the park) in a greater than Q20 event will be able to enter the park catchment and be conveyed through the park via sheet flow (minimum 30m effective width clear of obstructions).
5. All key park infrastructure (such as formal playground equipment) will be maintained above the Q100 level.

wsud strategy

key principles:

1. Devices which manage and improve the quality of stormwater will be incorporated in the streetscape.
2. Bio-basins will be designed for functionality, safety and maintenance.
3. It is intended that the devices be landscaped to resemble 'garden beds' and integrated into the streetscape.
4. End of line devices are co-located with District and Regional Recreational parks.
5. The WSUD devices will not impede the embellishments of the parks or impact the functions of the park. It is intended that these devices are integrated into the parks environs and form an integral part of the park that provides amenity and interest.
6. Devices will be designed so they comply with CEPTED principles and do not block key sightlines or reduce access into the parks.
7. End on line devices will be confined to the environmental transition areas within the non-urban open space network.

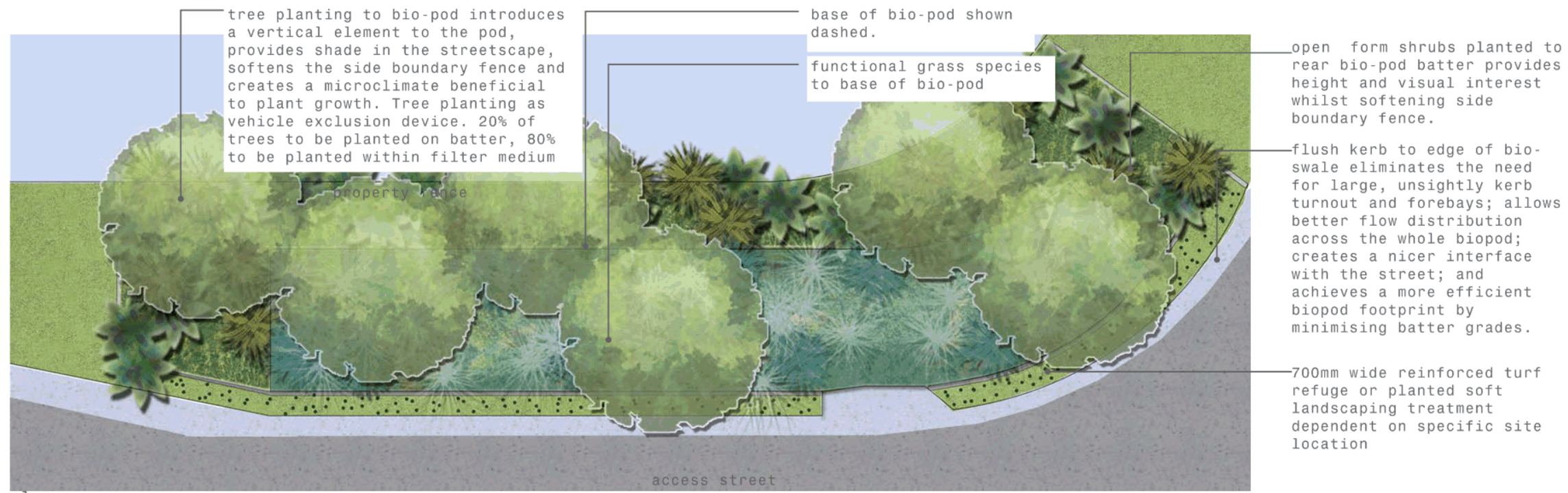
The following plan, section and elevation sketch shows a typical landscape treatment of a streetscape biopod.





elevation
 approx scale 1:100@A3

section
 approx scale 1:100@A3



plan
 approx scale 1:100@A3

regional recreation park-RR1-1

Key principles:

1. Provide a diverse set of facilities that accommodates informal recreation, social, cultural and leisure activities.
2. Ensure strong pedestrian and cycle links to the wider Harmony community. Encouraging sustainable modes of transport and enhancing the connections to the open space.
3. Integrate and celebrate the WSUD elements providing additional amenity and enhancement for the community to enjoy.
4. Develop an informal parkland setting that embodies the intrinsic values of the Sunshine Coast area.
5. Create a unique identity that establishes a hierarchy with the suite of parklands.
6. Extend the landscape character of the existing vegetate corridor into the park to create a stronger connection to the local flora and fauna.
7. Contribute to the landscape amenity and local biodiversity of the area by protecting and enhancing the existing vegetated corridor.
8. Integrate art into the landscape to add another dimension for the community to engage with.
9. There will be soft WSUD devices in the environmental transition zones. Refer report by Calibre Consulting.



district recreation park 1-DR1

Key Principles:

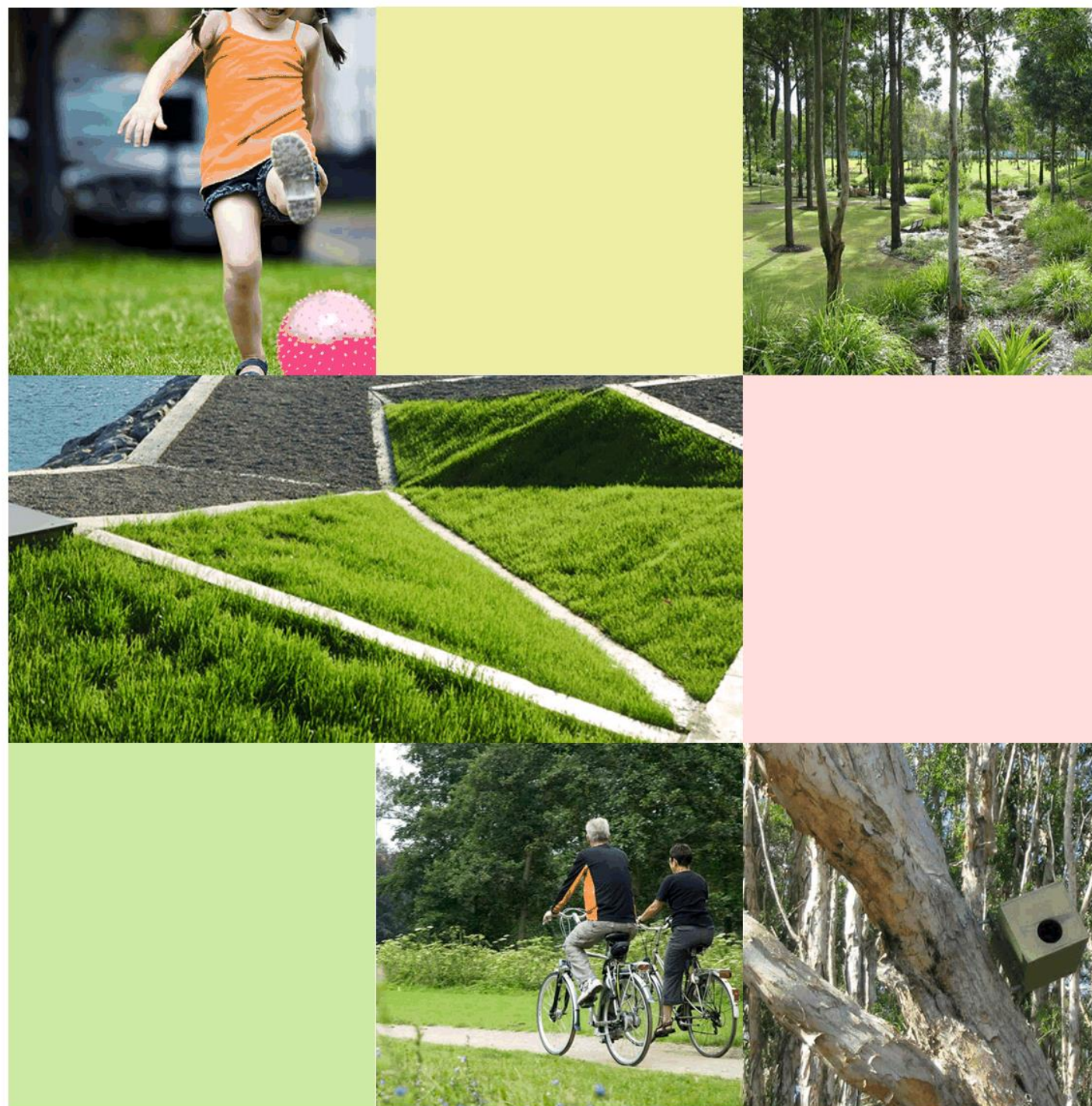
1. Provide a diverse set of facilities that accommodates informal recreation, social, cultural and leisure activities.
2. Ensure strong pedestrian and cycle links to the wider Harmony community.
3. Integrate and celebrate the WSUD elements providing additional amenity and enhancement for the community to enjoy.
4. Deliver a memorable parkland entrance plaza that consolidates and highlights the key embellishments within the park.
5. Develop an informal parkland setting that embodies the intrinsic values of the Sunshine Coast area.
6. Facilitate integration of a future proposed community area within the edge of the park.
7. The shape of the park has been adjusted from the original structure plan due to preliminary roadway design, and the nature of the WSUD and stormwater strategy. As no formal sports layouts are required in this park, it will not impact on its function or usability. Refer Urban Design report for additional information.



district recreation park 2-DR2

key principles:

1. Protect and enhance the neighbouring existing vegetated corridor.
2. Extend the landscape character of the existing vegetate corridor into the park to create a stronger connection to the local flora and fauna.
3. Provide a diverse set of facilities that accommodates informal recreation, social, cultural and leisure activities.
4. Ensure strong pedestrian and cycle links to the wider Harmony community.
5. Integrate and celebrate the WSUD elements providing additional amenity and enhancement for the community to enjoy.
6. Deliver a memorable parkland entrance plaza that consolidates and highlights the key embellishments within the park.
7. Develop an informal parkland setting that embodies the intrinsic values of the Sunshine Coast area.
8. There will be soft WSUD devices in the environmental transition zones. Refer report by Calibre Consulting.



district sports park-DS1

key principles:

1. Provide facilities for formal sporting and active recreation.
2. Cater for sporting events and sports clubs.
3. Ensure strong pedestrian and cycle links to the wider Harmony community.
4. Accommodate a diverse range of facilities for family groups attending sporting events.
5. Contribute to the landscape amenity and local biodiversity of the area.



