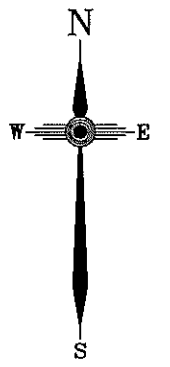


SURVEY PLAN

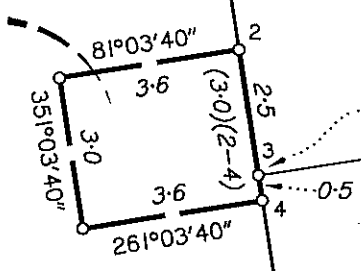


53
SP224917

CP
SP166603
IS183659

44
RP190094
DP287399

Emt A
11m²



O Nail in Conc
(5/DP287399)
Cen O SFP 172°, 0-08
O Screw

45
RP190094

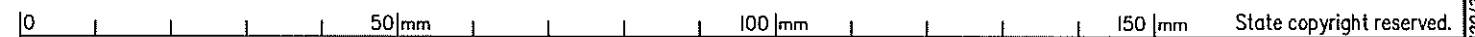
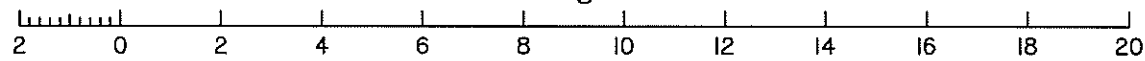
46
RP190094

O Nail in SFP
(1594750)
Cen O SFP
84°, 0-05
O Screw

CP
BUPI03735
IS94750

(36.0)(3-5)
Not to Scale

Scale 1:150 - Lengths are in Metres.



REFERENCE MARKS

STN	TO	BEARING	DIST	ORIGIN
3	O Nail in Conc	at	Stn	5/DP287399
3	O Screw in Conc	39°33'	2.2	5/DP287399
5	O Screw in Conc	295°55'	3.045	4/DP287399

Peg placed at all new corners unless stated otherwise.

LWS Australia PTY LTD ACN 602 554 094 hereby certify that the land comprised in this plan was surveyed by the corporation, by Tyler Patrick Charles Carroll, Cadastral Surveyor, for whose work the corporation accepts responsibility, and that the plan is accurate, that the said survey was performed in accordance with the Survey and Mapping Infrastructure Act 2003 and Surveyors Act 2003 and associated Regulations and Standards and that the said survey was completed on 29/07/2016

[Signature]
Director
LWS AUSTRALIA
PTY LTD
A.C.N.
602 554 094
3/8/2016
Date
COMMON SEAL

Plan of Easement A
in Lot 53 on SP224917

LOCAL GOVERNMENT: SUNSHINE COAST REGIONAL COUNCIL LOCALITY: BEERWAH

Meridian: RP190094

Survey Records: NO

Scale: 1:150
Format: STANDARD



SP290329