

## Woombye Streetscape Project

### Footpath and underground services works



Remainder of December construction program (day works, various times)

Christmas shutdown period. 22 December 2022 to 15 January 2023 (inclusive)

All works weather and site conditions permitting



Blackall Street, Woombye



Footpath and underground services works. Some temporary changes to access.

### Construction overview

Streetscape improvements are continuing from the Hill Street-Blackall Street intersection along Blackall Street, past the School of Arts Hall and Library and across the pub and bottle shop driveway (near Grounded Café).

These works include the demolition of existing footpaths, installing new electrical conduits and stormwater infrastructure, building new retaining walls/seating and constructing new kerbs.

The hall, library, pub, bottle shop and café will remain OPEN during all works.

Please continue to support all local businesses during construction and share this information with customers, staff, suppliers, delivery drivers, friends and family as required.

For safety reasons, all construction activity is subject to favourable weather and site conditions.

Please refer to Figure 1 to see the location of these works.

### Construction program including temporary changes to access

The Blackall Street new driveway to the pub and bottle shop has reopened. We thank residents for your cooperation during the past few weeks.

### Current works

The following works will continue until next Thursday 22 December.

- Footpath and seating construction works in front of the School of Arts Hall and Library
- New stormwater pipe works in front of Woombye Mechanics (pedestrian and vehicle access remain)
- Underground electrical works
- Site preparation ready for Christmas closure.

### Thursday 22 December 2022 to Sunday 15 January 2023 (inclusive)

- Construction will cease over the peak Christmas and school holiday period.

### Monday 16 January 2023

- Construction recommences.

### What to expect during construction

Large trucks and machinery will be operating including the use of concrete saws, jackhammers, and concrete trucks.

While the construction team will try to minimise noise as much as possible, intermittent noise is to be expected. Dust mitigation measures are in place.

## Temporary changes to traffic conditions

### Partial lane closures and traffic control

Traffic flow will be retained along Blackall Street and adjacent roads. Some partial lane closures and traffic control may be required. Please follow the instructions of traffic controllers and obey signage.

### On-street parking

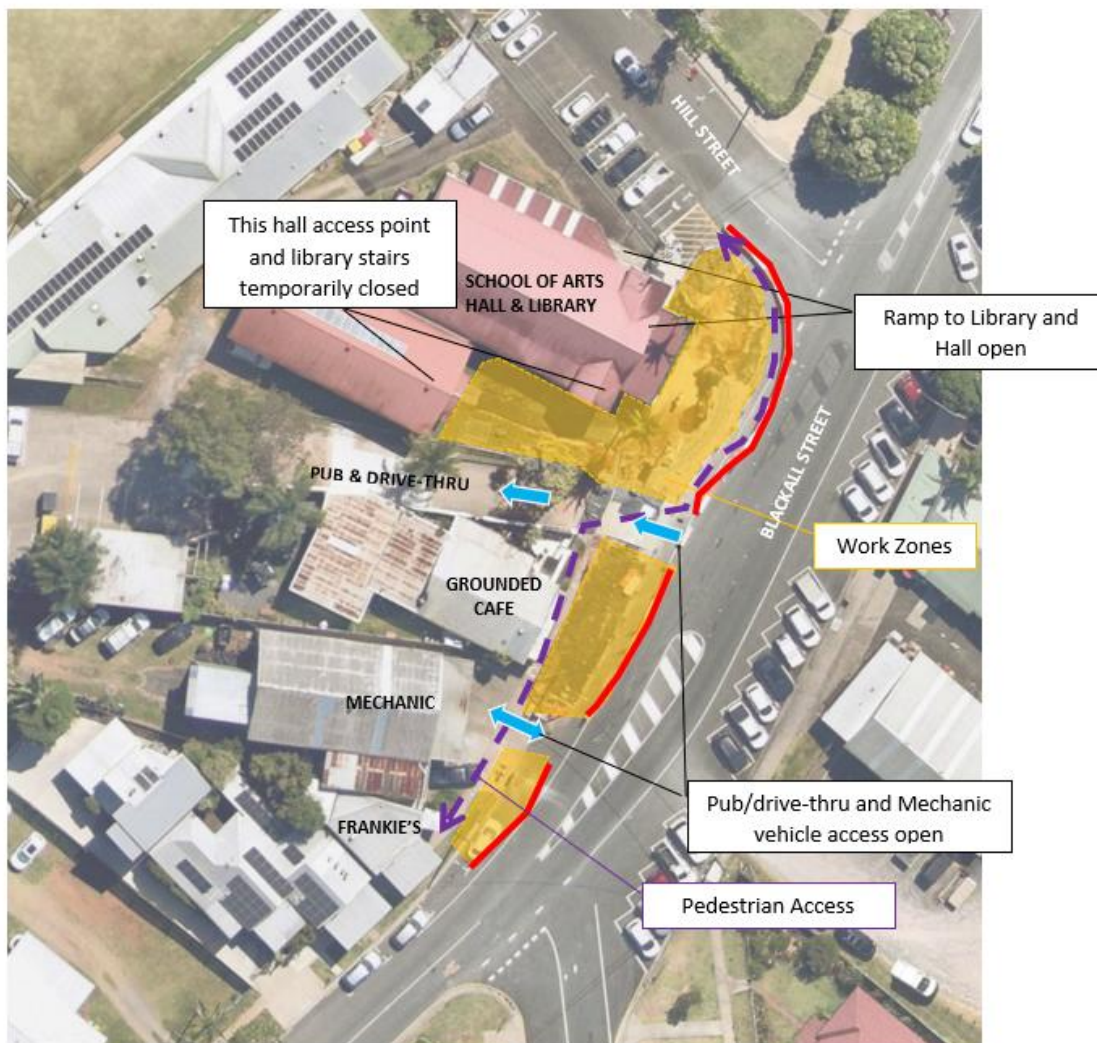
For safety reasons some on-street carparks and footpath areas will be temporarily closed off.

## Thank you for your patience

We thank our community including local businesses for your patience and understanding as we undertake these streetscape works.

## Merry Christmas and Happy New Year

We would like to wish our community a safe and happy festive season.



**Figure One.** Construction areas. Work zones and pedestrian access areas remain in place over the Christmas shutdown period (22 Dec – 15 Jan inclusive) All works are subject to weather and site conditions.

## Contact the project team or register for construction updates

For any questions about these works or to register for emailed construction updates, please email the project team on: [woombyestreetscape@sunshinecoast.qld.gov.au](mailto:woombyestreetscape@sunshinecoast.qld.gov.au)

You can also contact Council's customer service team on (07) 5475 7272 (Monday to Friday 8.15am – 5pm). Please quote 'Woombye Streetscape Project'.