

7046500N

7046750N

7047000N

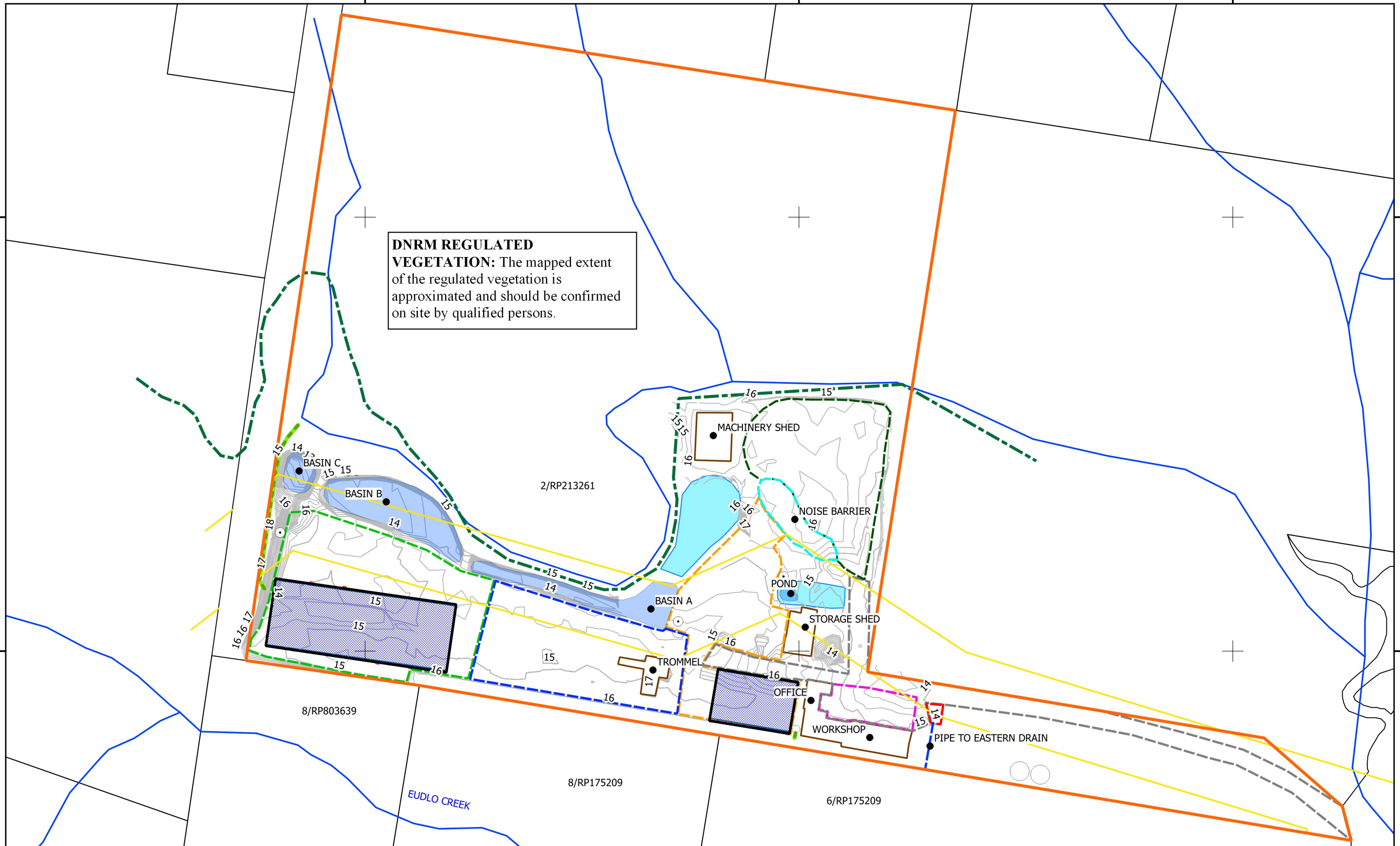
497750E

497750E

498000E

498000E

DNRM REGULATED VEGETATION: The mapped extent of the regulated vegetation is approximated and should be confirmed on site by qualified persons.



- LEGEND**
- SITE FEATURES
 - PROPOSED ENERGEX POWER POLE
 - POWER EASEMENT
 - PROPOSED OUTLET PIPE
 - BUILDING EXTENTS
 - PROPOSED NEW BASIN
 - DRAINAGE FEATURE
 - ROOFED WORK AREA
 - MAPPED WATERWAY
 - BASIN EXTENTS
 - DNRM REGULATED VEGETATION APPROXIMATION
 - SITE BOUNDARY
 - CONTOURS 0.25m
 - CONTOURS 1.0m

FIGURE 002
EARTHORN AUSTRALIA PTY LTD
CHEVALLUM
PROPOSED SITE CONFIGURATION
WHOLE OF SITE

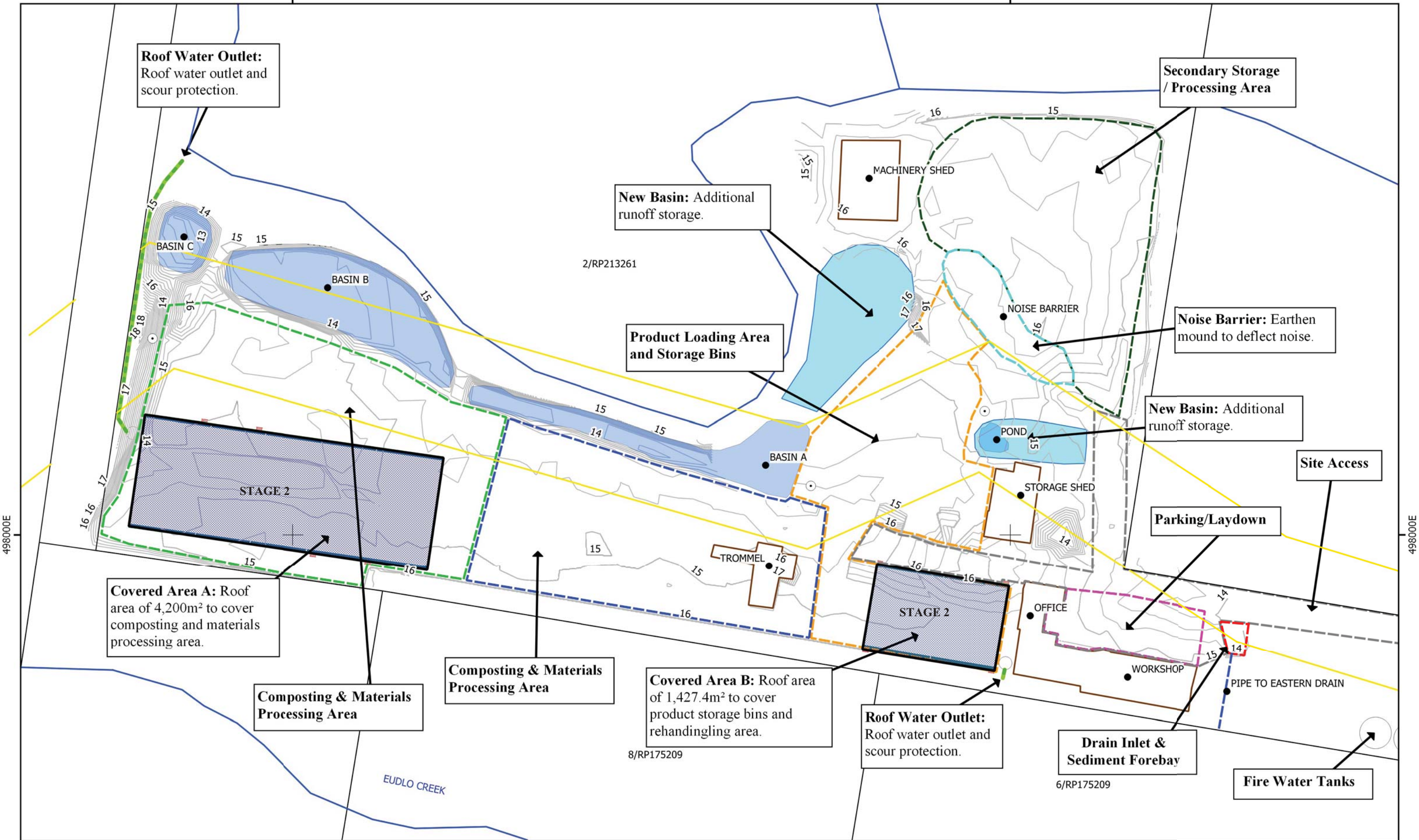
ATC Williams

0 25 50 75 100 m

DATE: 2018-08-03
CRS: GDA94 / MGA Zone 56
DOCUMENT REV: B

7046500N

7046750N



Roof Water Outlet:
Roof water outlet and scour protection.

Secondary Storage / Processing Area

New Basin: Additional runoff storage.

Product Loading Area and Storage Bins

Noise Barrier: Earthen mound to deflect noise.

New Basin: Additional runoff storage.

Site Access

Parking/Laydown

Covered Area A: Roof area of 4,200m² to cover composting and materials processing area.

Composting & Materials Processing Area

Composting & Materials Processing Area

Covered Area B: Roof area of 1,427.4m² to cover product storage bins and rehandling area.

Roof Water Outlet:
Roof water outlet and scour protection.

Drain Inlet & Sediment Forebay

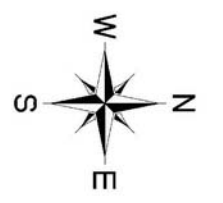
Fire Water Tanks

LEGEND

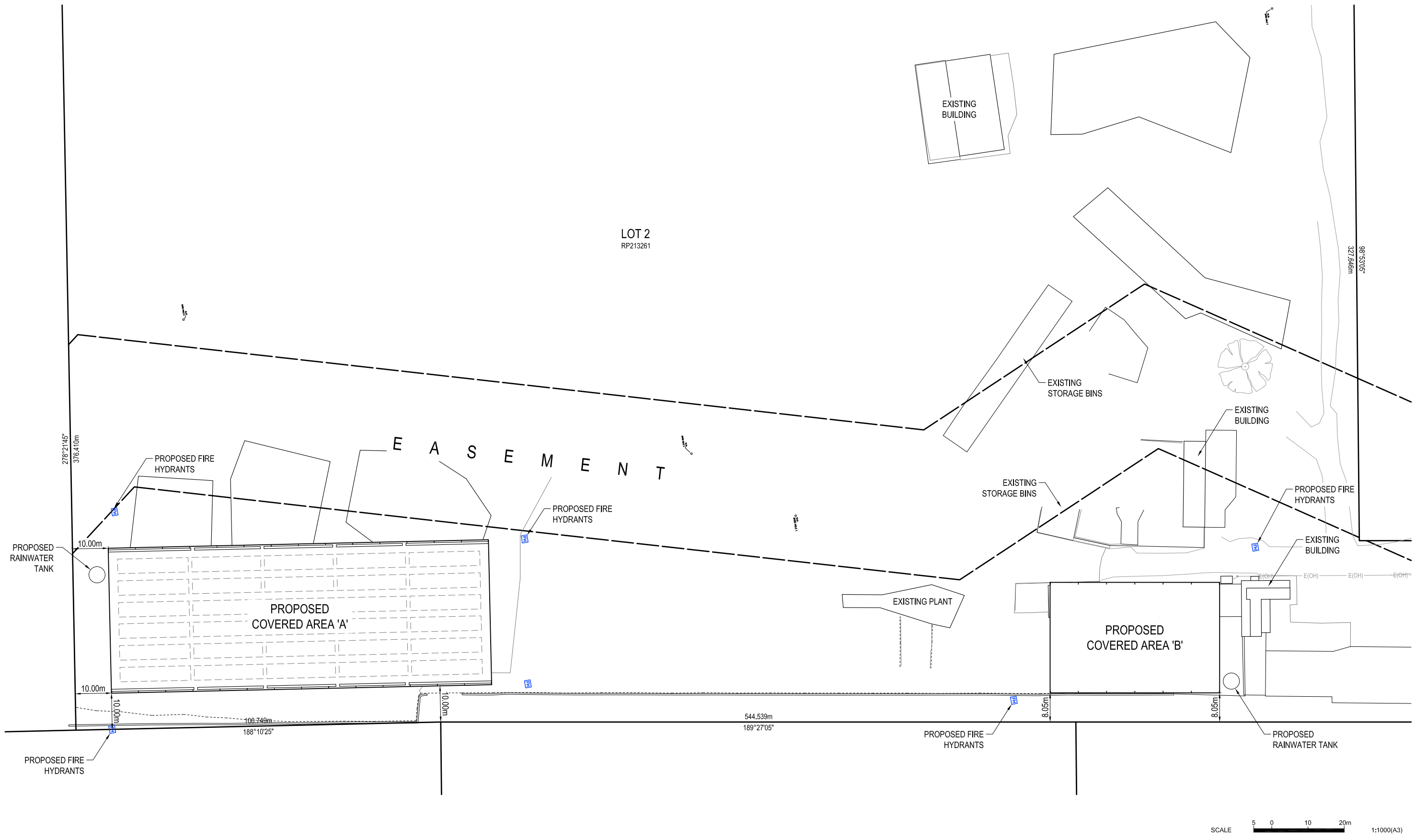
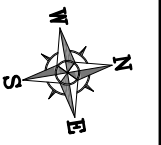
- SITE FEATURES
- PROPOSED ENERGEX POWER POLE
- CONTOURS 0.25m
- CONTOURS 1.0m
- POWER EASEMENT
- PROPOSED OUTLET PIPE
- BUILDING EXTENTS
- PROPOSED NEW BASIN
- DRAINAGE FEATURE
- ROOFED WORK AREA
- MAPPED WATERWAY
- BASIN EXTENTS

FIGURE 003 REV A
EARTH BORN AUSTRALIA PTY LTD
CHEVALLUM

**PROPOSED SITE CONFIGURATION
OPERATIONAL AREA**



DATE: 2018-08-07
CRS: GDA94 / MGA Zone 56
DOCUMENT REV: C



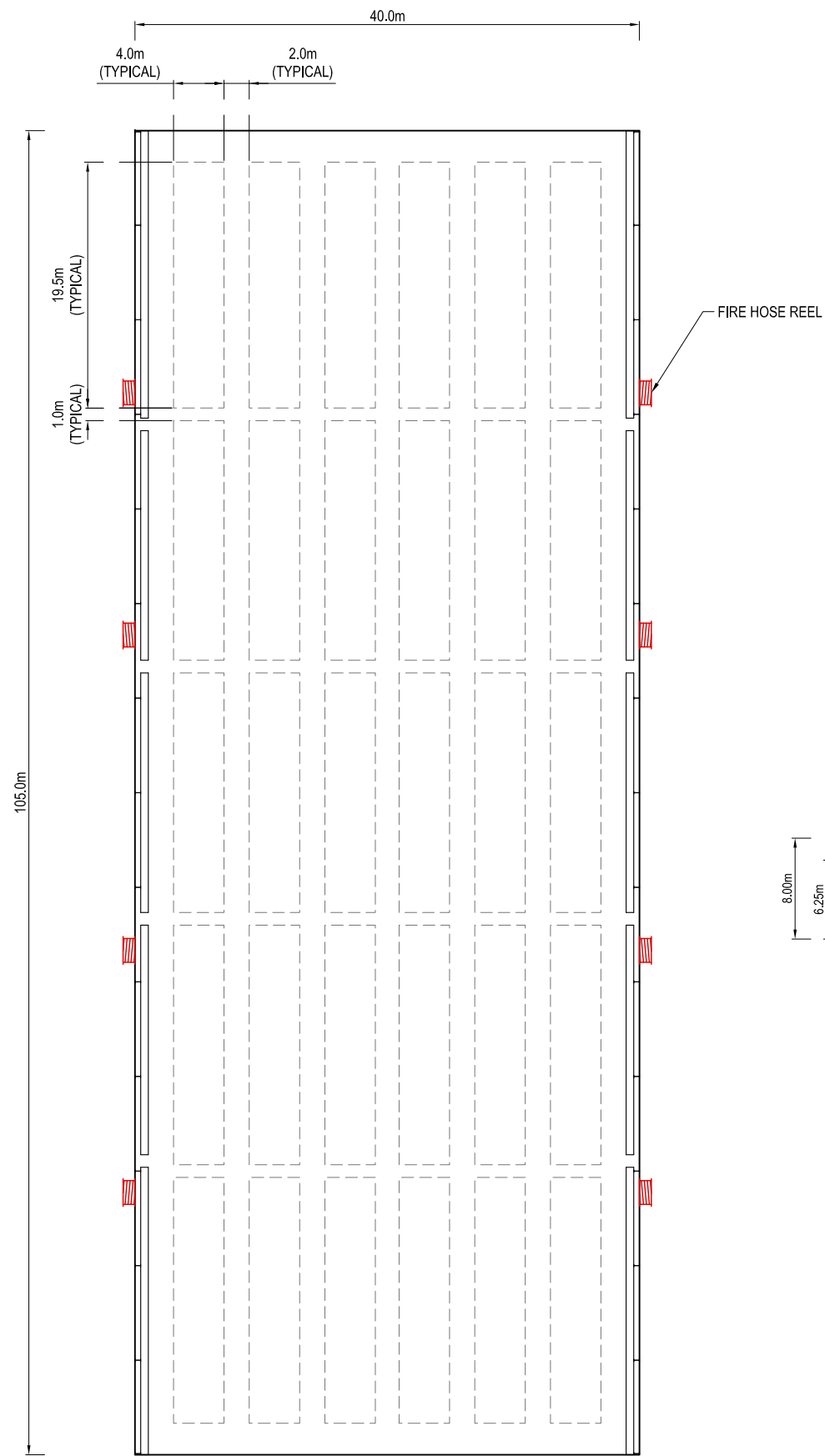
REVISIONS	No.	BY	DATE	DESCRIPTION	DWG. CHK.
	A	S.M.	18-07-18	CHANGES TO LAYOUT	DES. CHK.
	B	S.M.	23-07-18	DIMENSIONS ADDED	DRAWN

PLOT FILE	DATE	TECHNICALLY APPROVED:
DESIGN	06/18	
DRAWN	06/18	
DES. CHK.		
DWG. CHK.		


DUGGAN & HEDE PTY LTD
 ACN 077 618 663
 Professional Engineers, Planners and Environmental Consultants
 PO Box 496 Clayfield Qld 4011
 Telephone (07) 3357 3666
 Facsimile (07) 3857 6233
 e_mail dh@dhenv.com.au

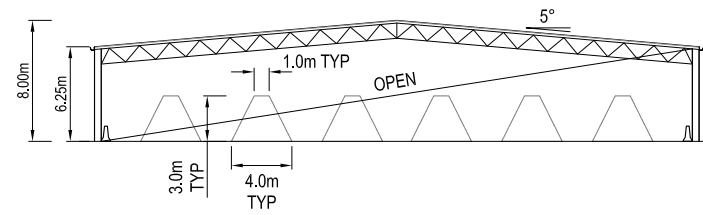
EARTHORN AUSTRALIA PTY LTD
 262 CHEVALLUM ROAD, PALMWOODS
 COMPOST FACILITY
 PROPOSED SITE LAYOUT PLAN

SCALE	AS SHOWN
SHEET	01 of 01
DRG No.	REVISION B EB1771-C2-02



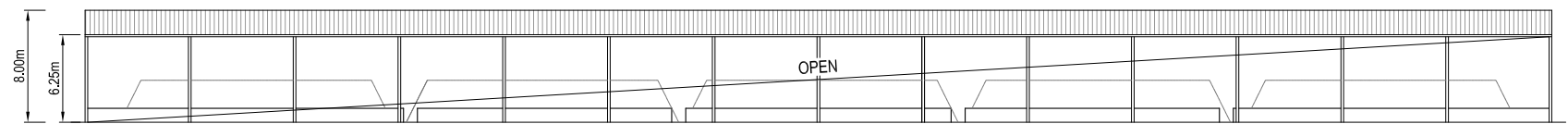
PLAN

1:500 (A3)



NORTH / SOUTH ELEVATION - TYPICAL

1:500 (A3)



EAST / WEST ELEVATION - TYPICAL

1:500 (A3)

	BUILDING 'A'	BUILDING 'B'
PLAN AREA	4200m ²	1427.4m ²
SECTION AREA	285m ²	223.7m ²
VOLUME	MAX. 30,000m ³	MAX. 10,500m ³

NOTE: MAXIMUM HEIGHT NOT TO EXCEED 8.5m ABOVE NGL

SCALE 2.5 0 5 10m 1:500(A3)

REVISIONS	No.	BY	DATE	DESCRIPTION	DWG. CHK.
	A	S.M.	23-07-18	ADDITIONAL ELEVATION	DES. CHK.

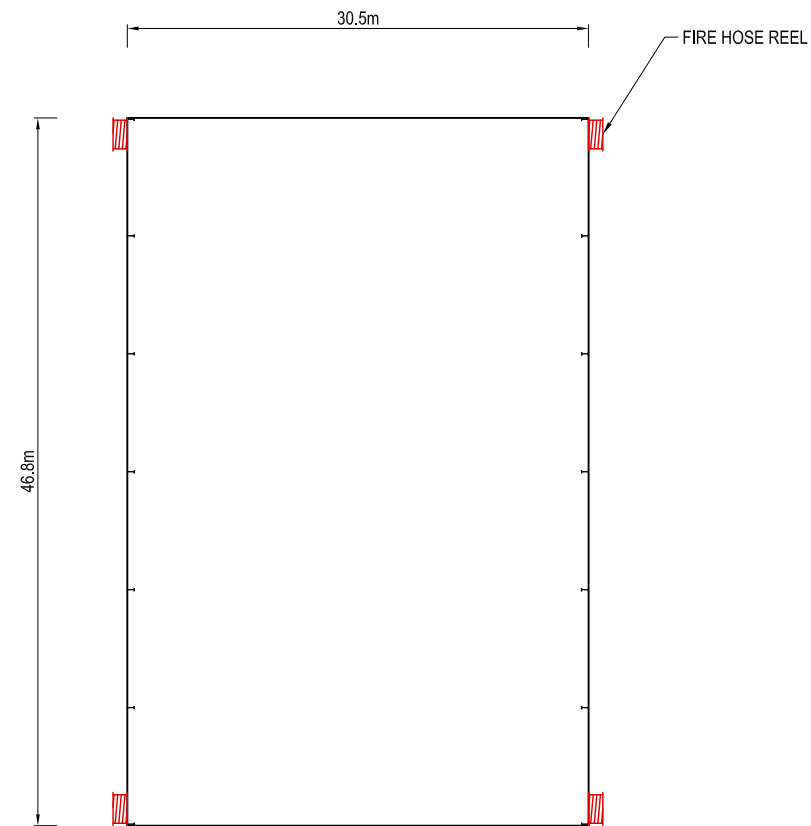
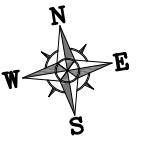
PLOT FILE	DATE
DESIGN	07/18
DRAWN	07/18
DES. CHK.	
DWG. CHK.	

TECHNICALLY APPROVED:

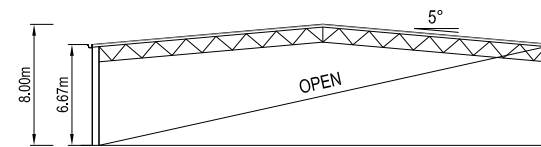
DUGGAN & HEDE PTY LTD
 ACN 077 618 663
 Professional Engineers, Planners and Environmental Consultants
 PO Box 496 Clayfield Qld 4011
 Telephone (07) 3357 3666
 Facsimile (07) 3857 6233
 e_mail dh@dhenv.com.au

EARTHBORN AUSTRALIA PTY LTD
 262 CHEVALLUM ROAD, PALMWOODS
 COMPOST FACILITY
 COVERED AREA 'A' - PLAN & ELEVATION

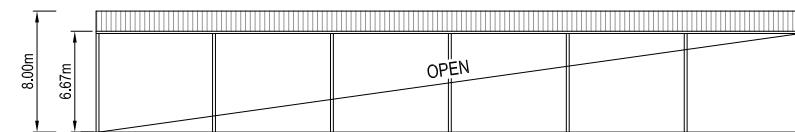
SCALE	AS SHOWN
SHEET	01 of 01
DRG No.	REVISION A EB1771-C2-03



PLAN
1:500 (A3)



NORTH / SOUTH ELEVATION - TYPICAL
1:500 (A3)



EAST / WEST ELEVATION - TYPICAL
1:500 (A3)

	BUILDING 'A'	BUILDING 'B'
PLAN AREA	4200m ²	1427.4m ²
SECTION AREA	285m ²	223.7m ²
VOLUME	MAX. 30,000m ³	MAX. 10,500m ³

NOTE: MAXIMUM HEIGHT NOT TO EXCEED 8.5m ABOVE NGL

SCALE 2.5 0 5 10m 1:500(A3)

No.	BY	DATE	DESCRIPTION	DWG. CHK.	DATE	TECHNICALLY APPROVED:
A	S.M.	23-07-18	ADDITIONAL ELEVATION	DES. CHK.	06/18	

PLOT FILE	DATE	TECHNICALLY APPROVED:
DESIGN	R.D.	06/18
DRAWN	S.M.	06/18
DES. CHK.		
DWG. CHK.		

DUGGAN & HEDE PTY LTD
 ACN 077 618 663
 Professional Engineers, Planners and Environmental Consultants
 PO Box 496 Clayfield Qld 4011
 Telephone (07) 3357 3666
 Facsimile (07) 3857 6233
 e_mail dh@dhenv.com.au

EARTH BORN AUSTRALIA PTY LTD
 262 CHEVALLUM ROAD, PALMWOODS
 COMPOST FACILITY
 COVERED AREA 'B' - PLAN & ELEVATION

SCALE	AS SHOWN
SHEET	01 of 01
DRG No.	REVISION A EB1771-C1-04