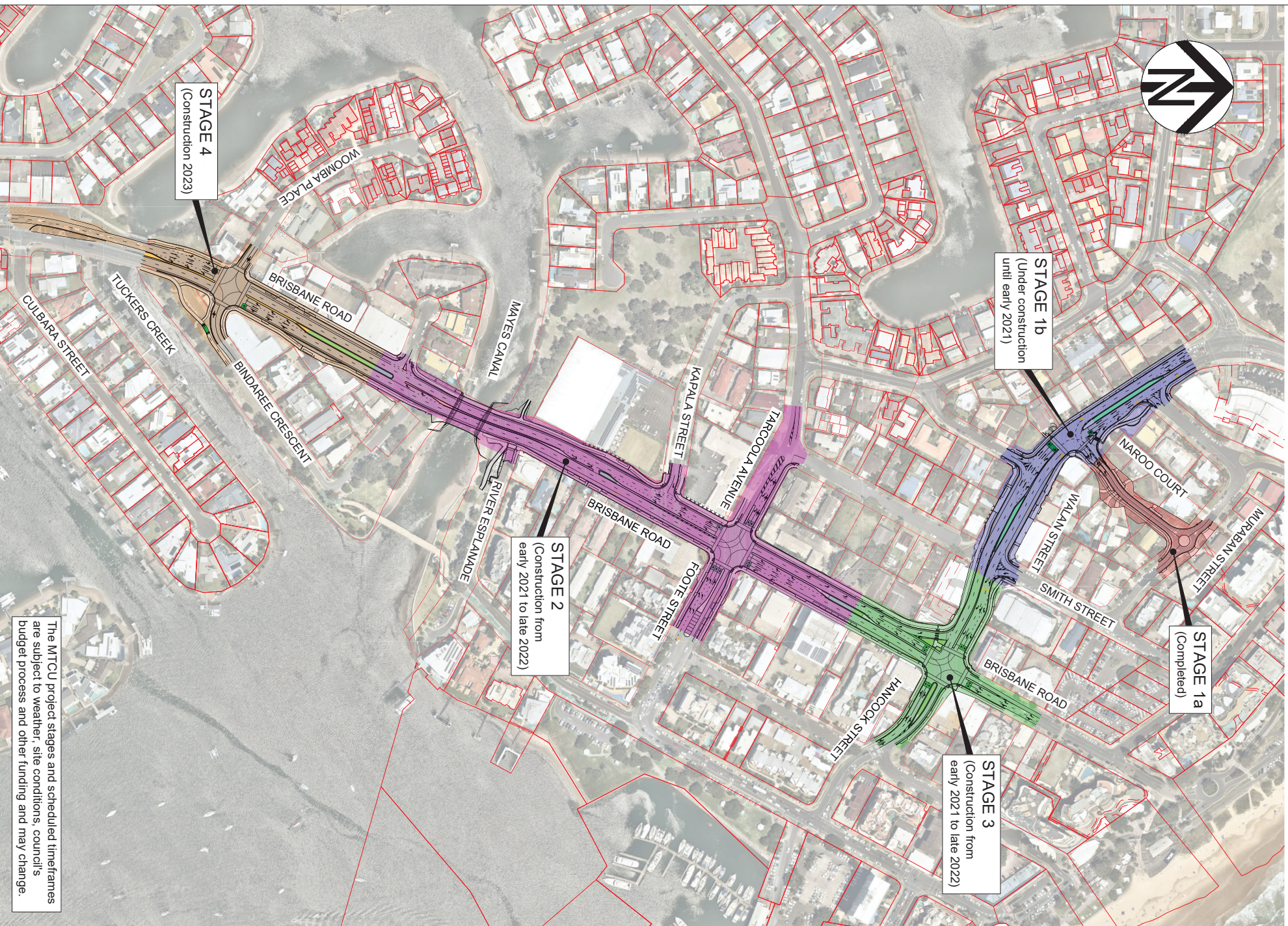


MOOLOLABA TRANSPORT CORRIDOR UPGRADE - STAGING MAP



STAGE 1b
(Under construction until early 2021)

STAGE 1a
(Completed)

STAGE 3
(Construction from early 2021 to late 2022)

STAGE 2
(Construction from early 2021 to late 2022)

STAGE 4
(Construction 2023)

The MTCU project stages and scheduled timetables are subject to weather, site conditions, council's budget process and other funding and may change.