

Sunshine Coast Regional Council

Amendment Subordinate Local Law No. 1 (Miscellaneous) 2016

Contents

Part 1	Preliminary.....	2
	1 Short title	2
	2 Commencement	2
Part 2	Amendment of Subordinate Local Law No.2 (Animal Management) 2011	2
	3 Subordinate local law amended	2
	4 Amendment of sch 1 (Prohibition on keeping animals in prescribed circumstances).....	2
	5 Amendment of sch 2 (Requirement for approval to keep animal) ...	2
	6 Amendment of sch 3 (Minimum standards for keeping particular animals).....	3
	7 Amendment of sch 5 (Exclusion of animals from specific places) .	3
	8 Amendment of sch 6 (Dog off-leash areas).....	6
Part 3	Amendment of Subordinate Local Law No.4 (Local Government Controlled Areas, Facilities, Infrastructure and Roads) 2011	12
	9 Subordinate local law amended	12
	10 Amendment of sch 2 (Restricted activities for local government controlled areas, facilities, infrastructure or roads).....	12
Part 4	Amendment of Subordinate Local Law No.5 (Parking) 2011	13
	11 Subordinate local law amended	13
	12 Amendment of sch 2 (Declaration of off-street regulated parking areas)	13
	13 Amendment of sch 3 (Persons who may be issued with a parking permit)	66

Part 1 Preliminary

1 Short title

This subordinate local law may be cited as *Amendment Subordinate Local Law No.1 (Miscellaneous) 2016*.

2 Commencement

This subordinate local law commences on the date it is published in the gazette.

Part 2 Amendment of Subordinate Local Law No.2 (Animal Management) 2011

3 Subordinate local law amended

This part amends *Subordinate Local Law No.2 (Animal Management) 2011*.

4 Amendment of sch 1 (Prohibition on keeping animals in prescribed circumstances)

(1) Schedule 1, row 1, column 2, items 1, 2 and 3, 'lot'—
omit, insert—
property

(2) Schedule 1, row 1, column 2, item 1, 'less than'—
omit, insert—
up to

(3) Schedule 1, row 1, column 2, item 2, '400'—
omit, insert—
401

(4) Schedule 1, row 1, column 2—
insert—

4 more than 10 bee hives must not be kept on a property between 2001 square metres and 4000 square metres in size

5 Amendment of sch 2 (Requirement for approval to keep animal)

(1) Schedule 2, heading, 'animal'—
omit, insert—
animals

- (2) Schedule 2, rows 1, 2, and 3, row 4, items 1 and 2, and row 5, 'lot'—
omit, insert—
property
- (3) Schedule 2, row 5, column 1, before 'rooster'—
insert—
cockerel,
- (4) Schedule 2, row 5, column 2, after 'keep a'—
insert—
cockerel,

6 Amendment of sch 3 (Minimum standards for keeping particular animals)

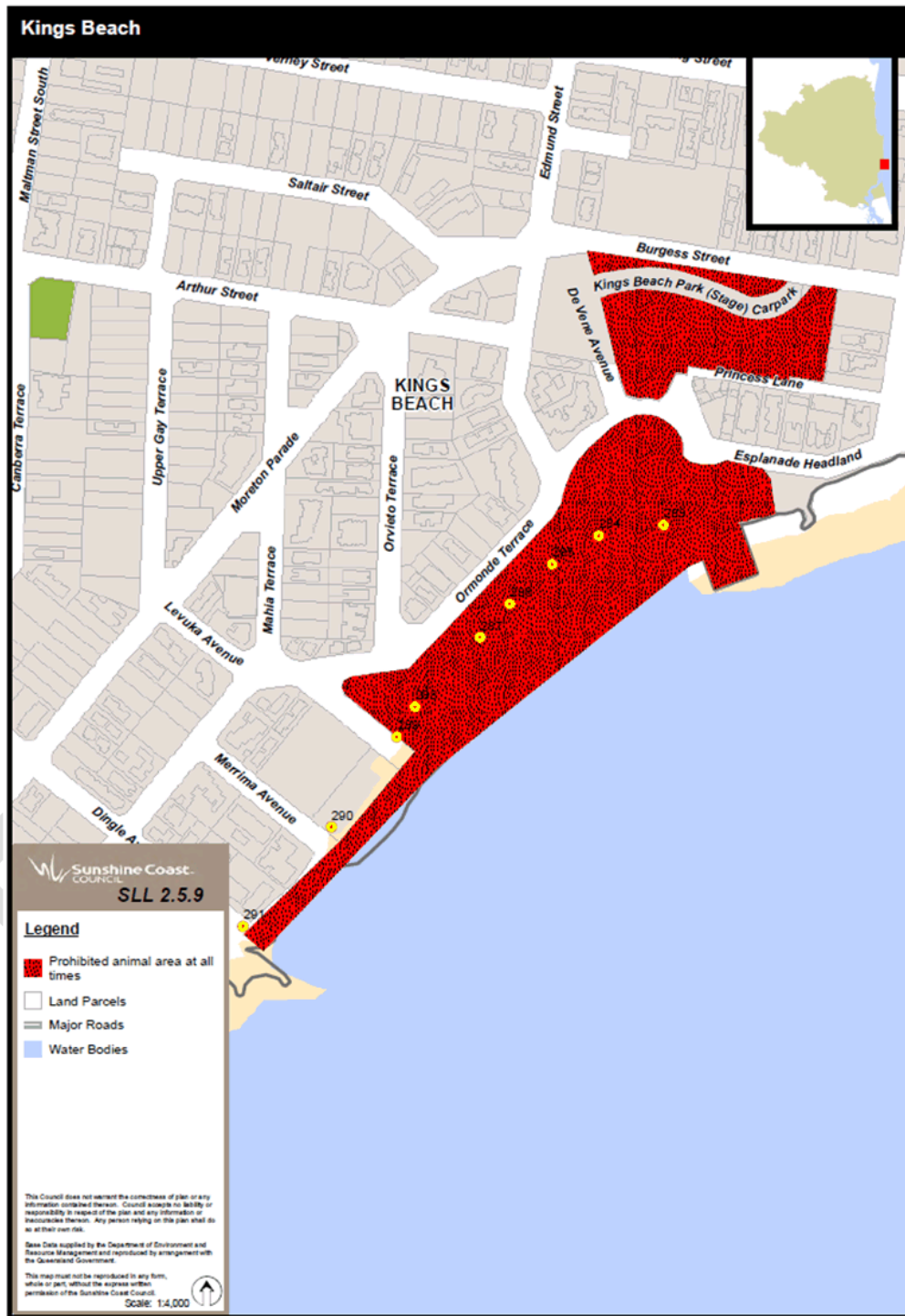
- Schedule 3, row 1, item 2(a), (b) and (c), row 2, item 2(a), (b) and (c), 'lot'—
omit, insert—
property

7 Amendment of sch 5 (Exclusion of animals from specific places)

- (1) Schedule 5, after row 11—
insert—

park/reserve	Mooloolaba Beach, Mooloolaba (beach access 171 to 195)	all animals	SLL 2.5.12
--------------	---	-------------	------------

- (2) Schedule 5, map SLL2.5.9—
omit, insert—



- (3) Schedule 5, after map SLL 2.5.11—
insert—

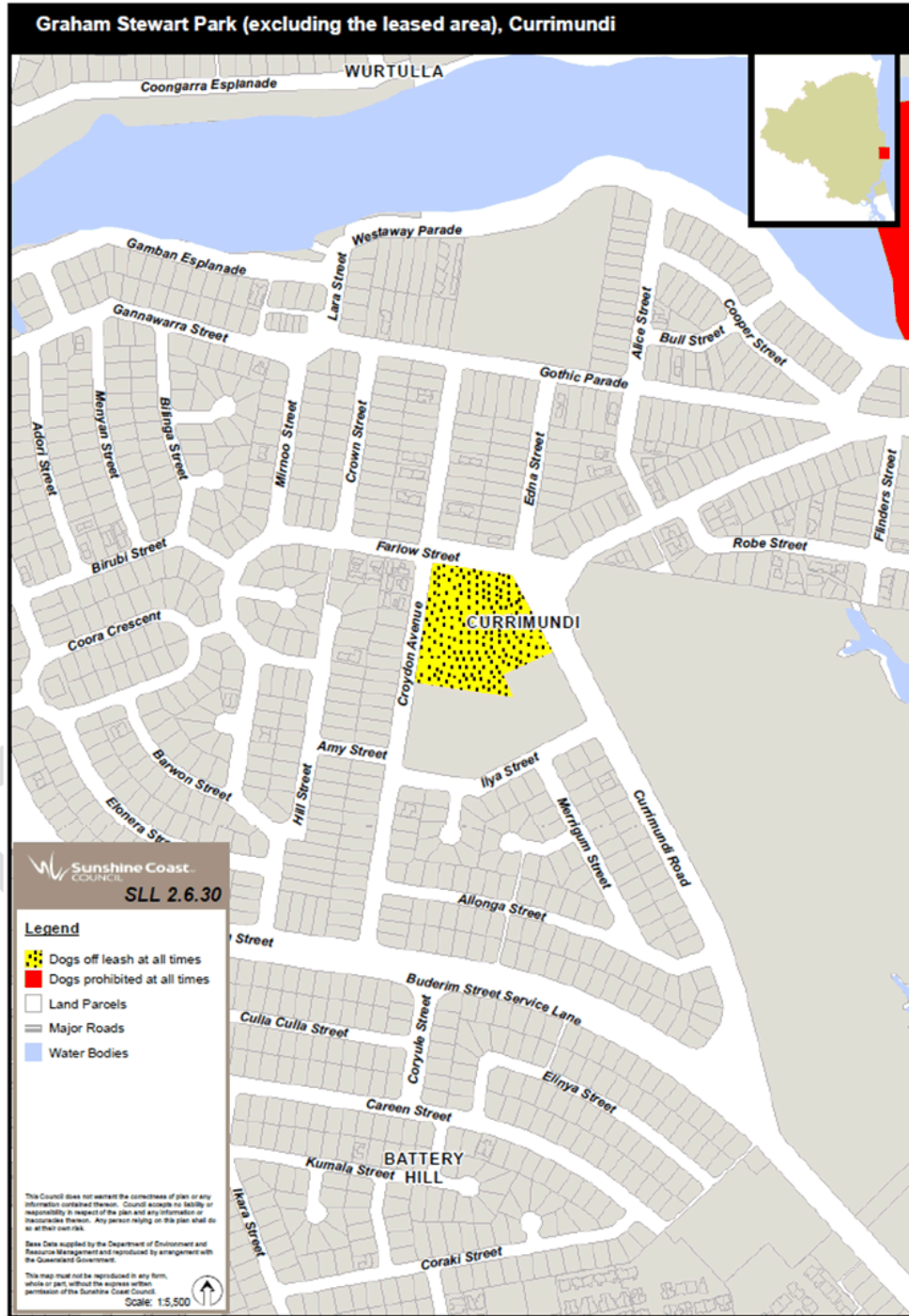


8 Amendment of sch 6 (Dog off-leash areas)

- (1) Schedule 6, row 6, column 2, 'North Shore Beach, Mudjimba'—
omit, insert—
North Shore, Twin Waters
- (2) Schedule 6, row 15 (relating to Chancellor Village Park), column 3, 'at times indicated on signs'—
omit, insert—
all times
- (3) Schedule 6, row 26, column 2, 'Cooroora'—
omit, insert—
Lower Neil
- (4) Schedule 6, row 26, column 2, '270'—
omit, insert—
269
- (4) Schedule 6, map SLL2.6.16—
omit, insert—



- (5) Schedule 6, map SLL2.6.30—
omit, insert—



- (6) Schedule 6, map SLL2.6.35—
omit, insert—

DRAFT



(7) Schedule 6, map SLL2.6.36—

omit, insert—



Part 3 Amendment of Subordinate Local Law No.4 (Local Government Controlled Areas, Facilities, Infrastructure and Roads) 2011

9 Subordinate local law amended

This part amends *Subordinate Local Law No.4 (Local Government Controlled Areas, Facilities, Infrastructure and Roads) 2011*.

10 Amendment of sch 2 (Restricted activities for local government controlled areas, facilities, infrastructure or roads)

Schedule 2, after row 1—

insert—

all local government controlled areas and roads	camp	permitted only— (a) in a place designated by the local government as a camping ground; or (b) where the camping is authorised under a condition of an approval granted under <i>Local Law No.1 (Administration) 2011</i>
all local government controlled areas and roads	ride a horse	permitted only— (a) where signs erected by the local government authorise the riding of horses at the place; or (b) where the riding of horses is authorised under a condition of an approval granted under <i>Local Law No.1 (Administration) 2011</i> <i>Example for paragraph (b) —</i> An approval for a temporary entertainment event in a park might authorise the riding of horses.
all local government controlled areas and roads	abseiling	permitted only— (a) where signs erected by the local government authorise abseiling at the place; or (b) where abseiling is authorised under a condition of an approval granted under <i>Local</i>

		<p><i>Law No.1 (Administration) 2011</i></p> <p><i>Example for paragraph (b) —</i></p> <p>An approval for a temporary entertainment event in a park might authorise abseiling.</p>
all local government controlled areas and roads	rock climbing	<p>permitted only—</p> <p>(a) where signs erected by the local government authorise rock climbing at the place; or</p> <p>(b) where rock climbing is authorised under a condition of an approval granted under <i>Local Law No.1 (Administration) 2011</i></p> <p><i>Example for paragraph (b) —</i></p> <p>An approval for a temporary entertainment event in a park might authorise rock climbing.</p>

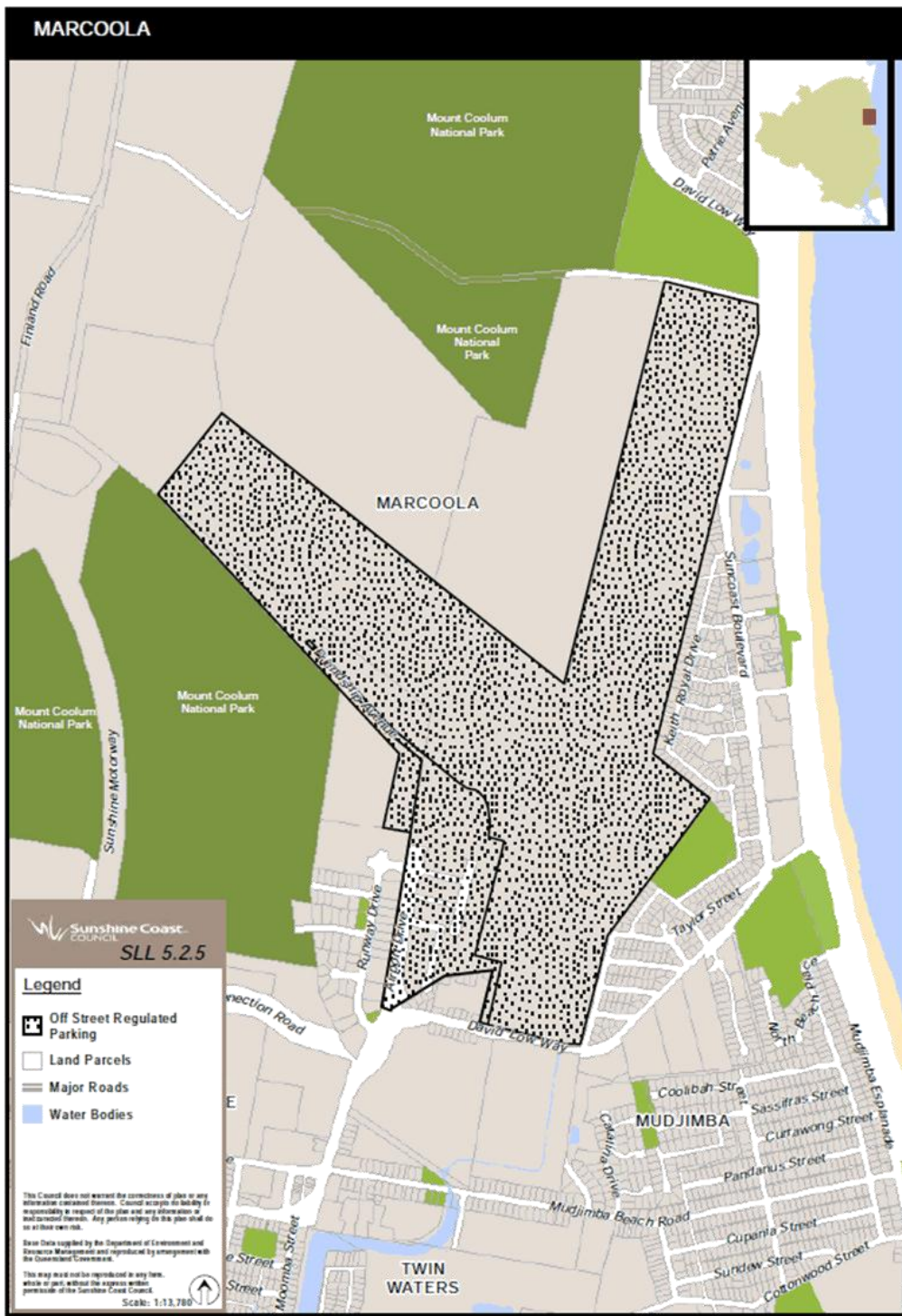
Part 4 Amendment of Subordinate Local Law No.5 (Parking) 2011

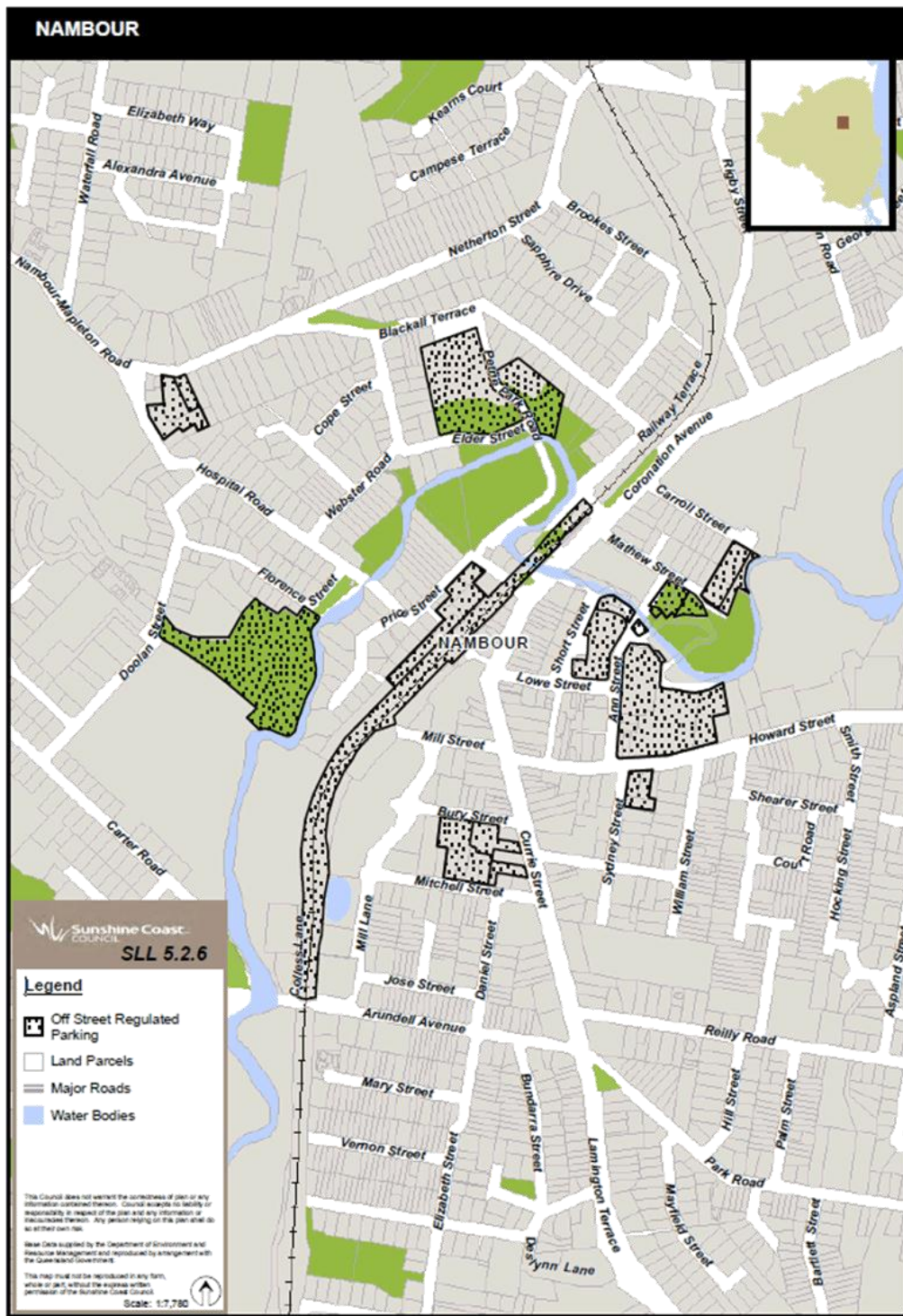
11 Subordinate local law amended

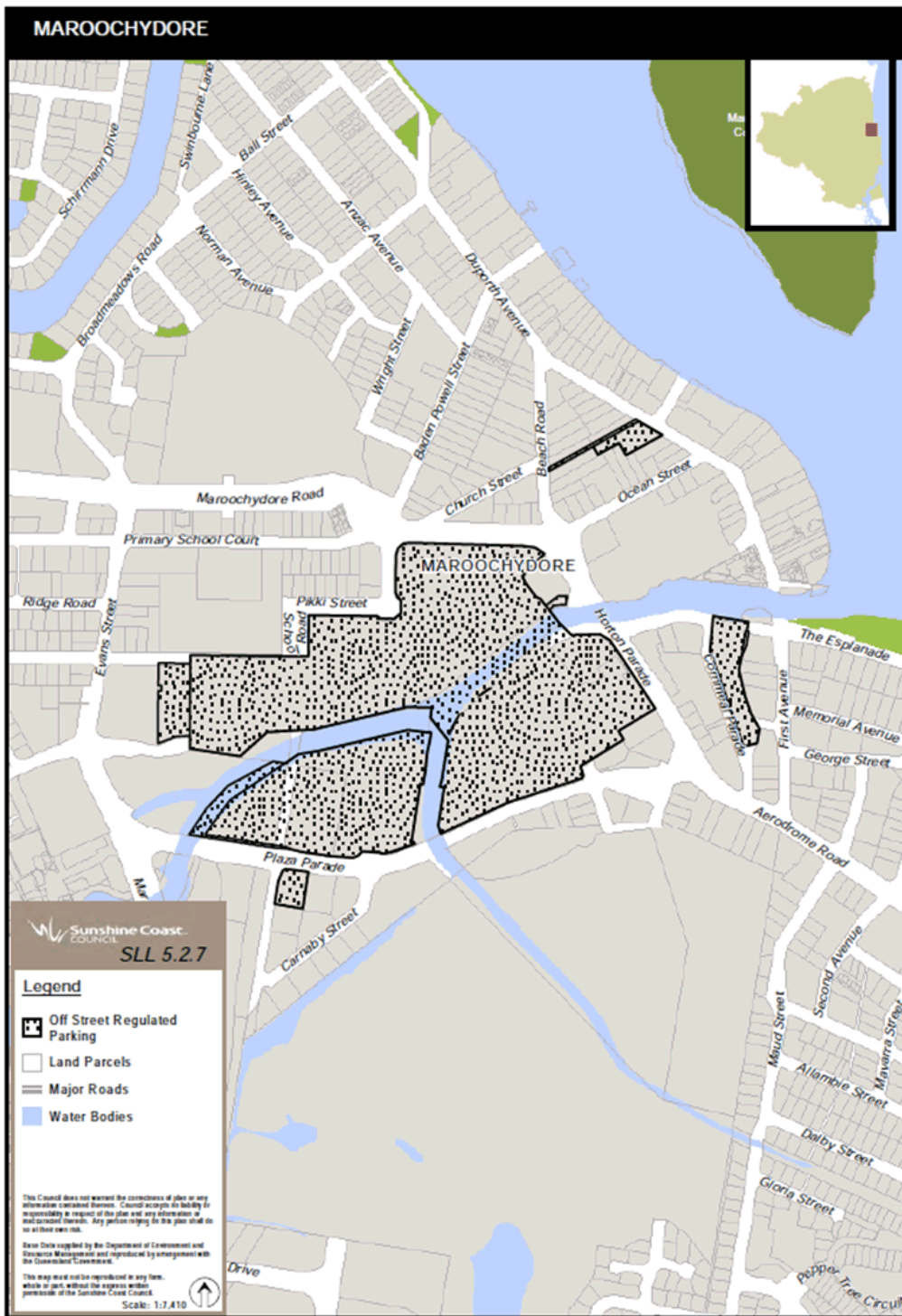
This part amends *Subordinate Local Law No.5 (Parking) 2011*.

12 Amendment of sch 2 (Declaration of off-street regulated parking areas)

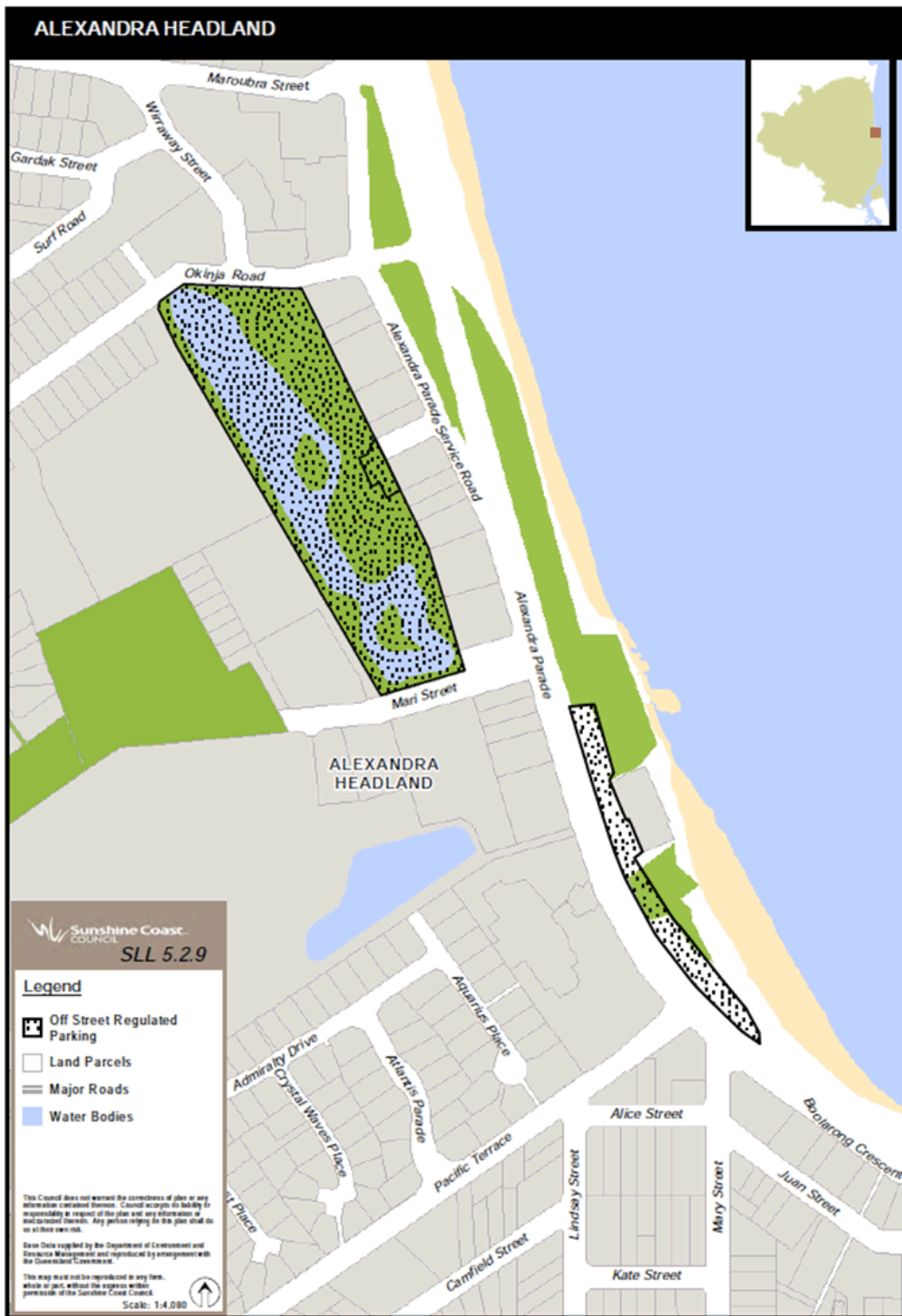
- (1) Schedule 2, maps SLL5.2.5, SLL5.2.6, SLL5.2.7, SLL5.2.8, SLL5.2.9, SLL5.2.10, SLL5.2.11, SLL5.2.12, SLL5.2.13, SLL5.2.14, SLL5.2.15, SLL5.2.16—
omit.
- (2) Schedule 2—
insert—

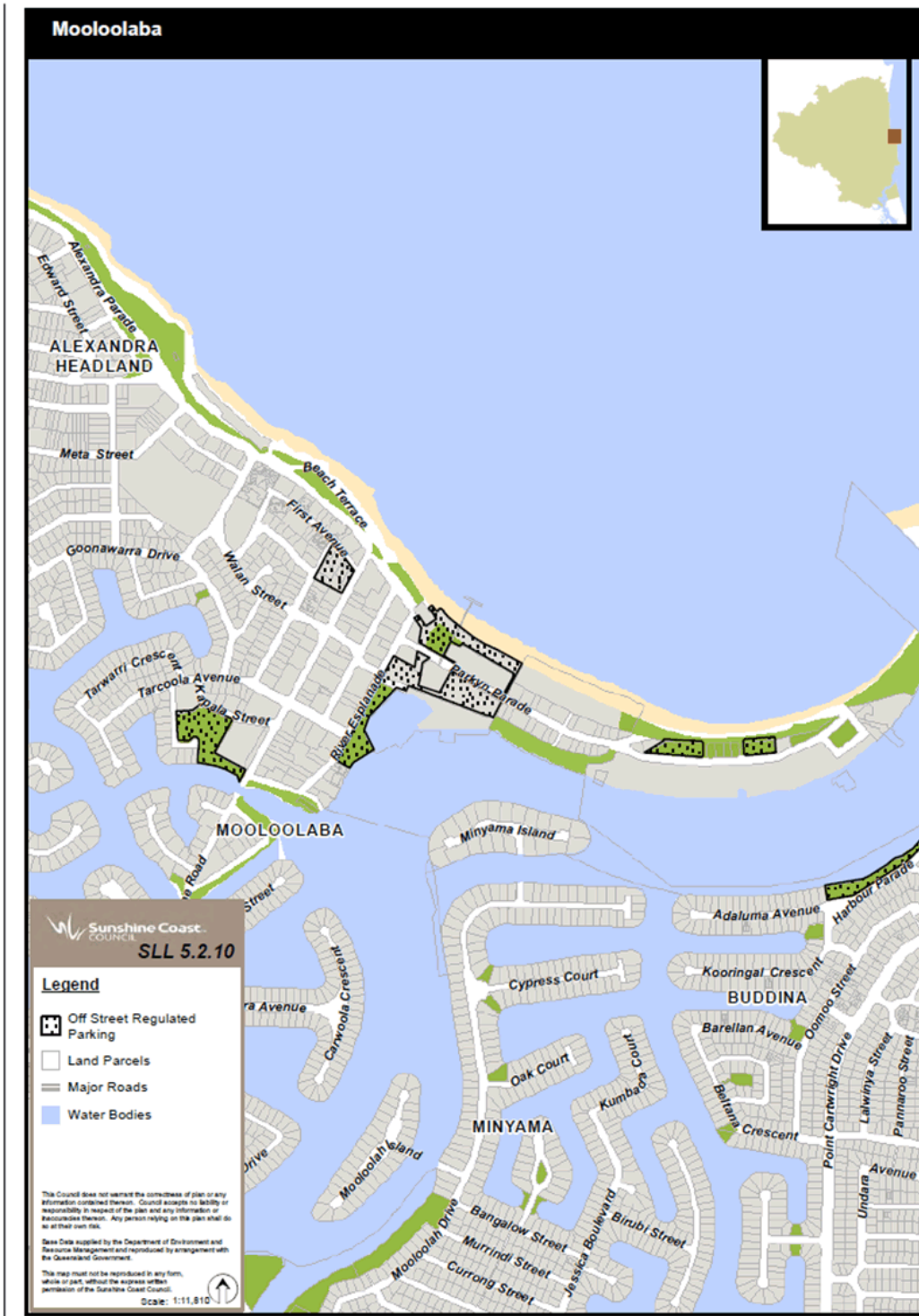




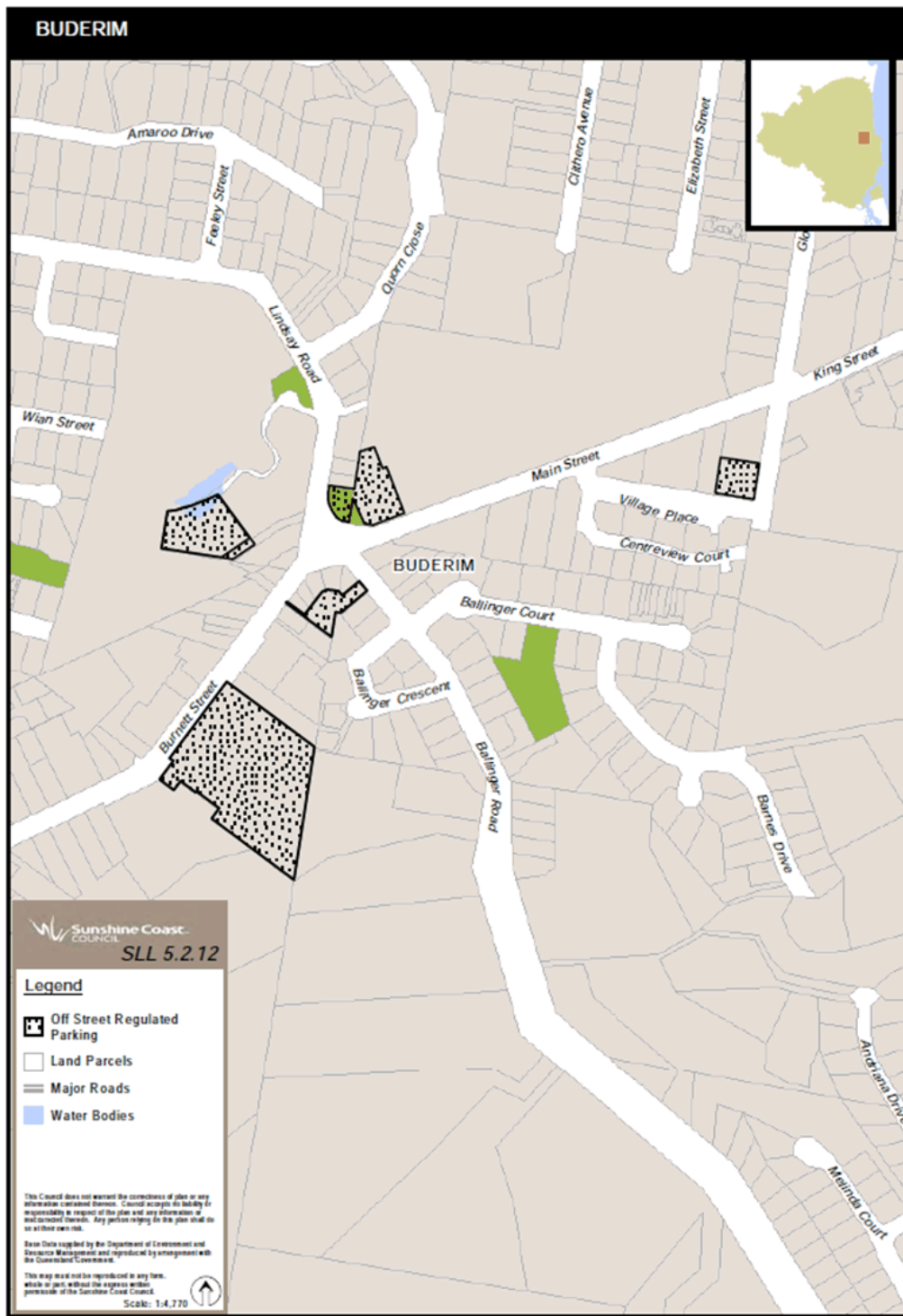




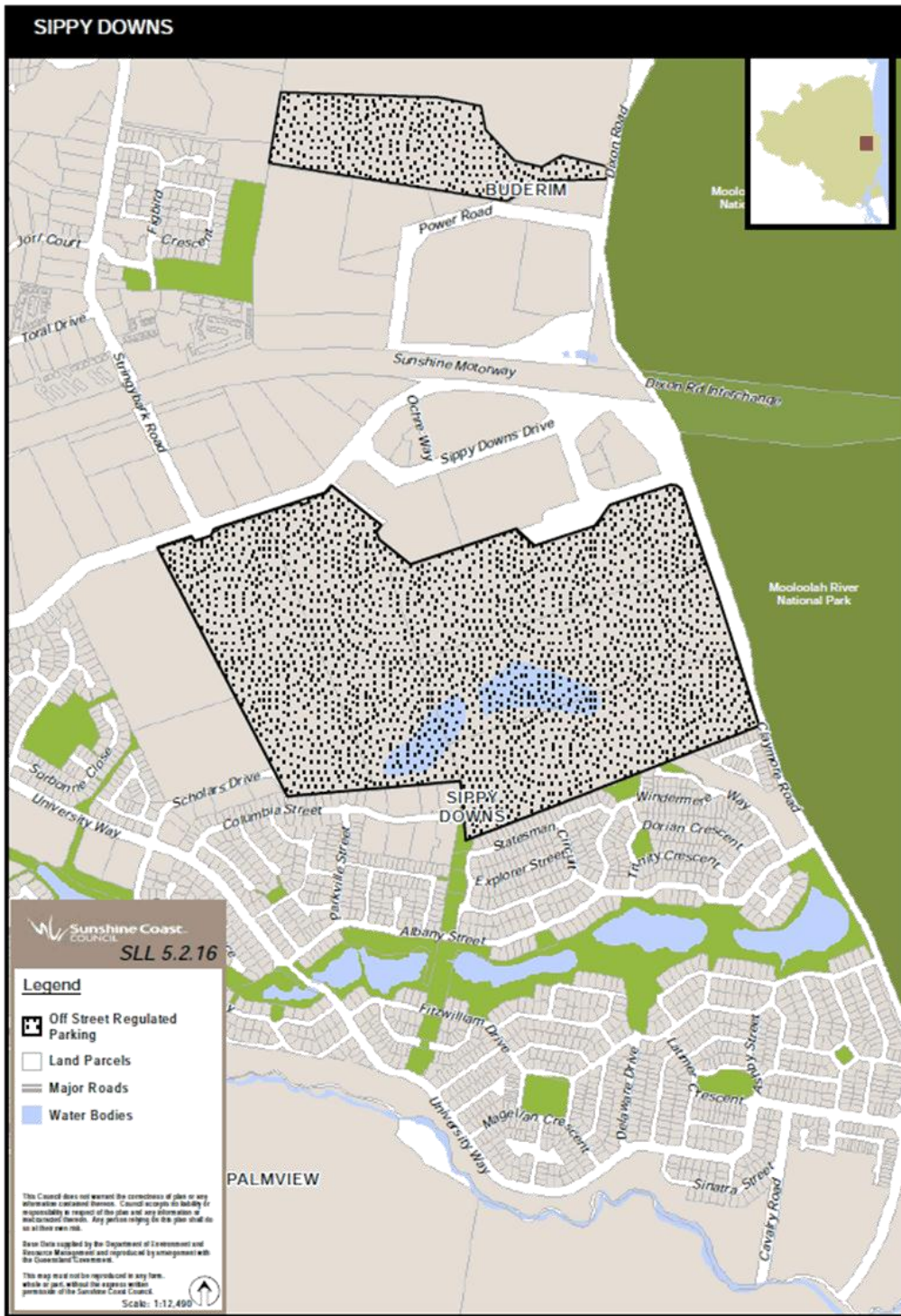


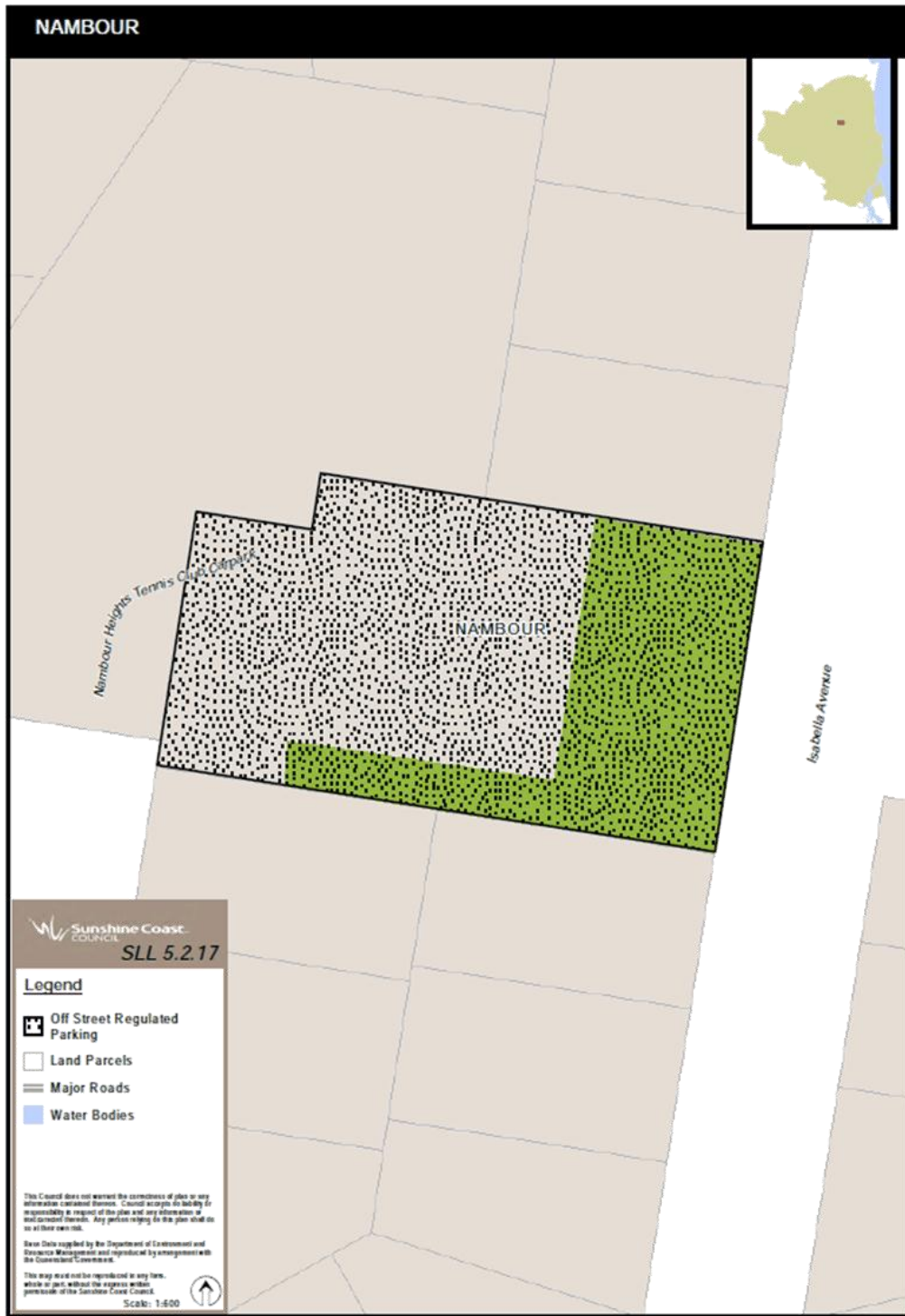


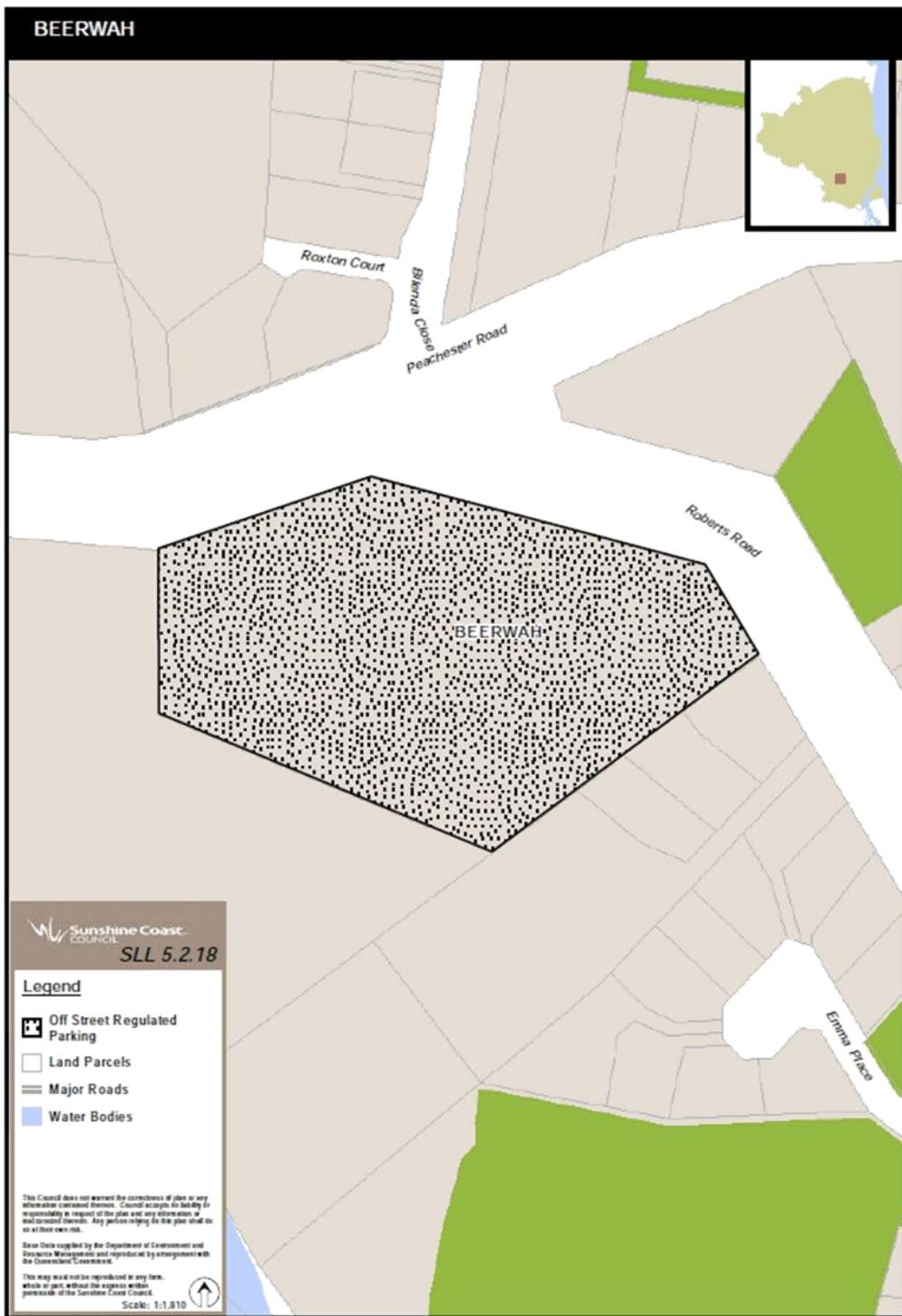




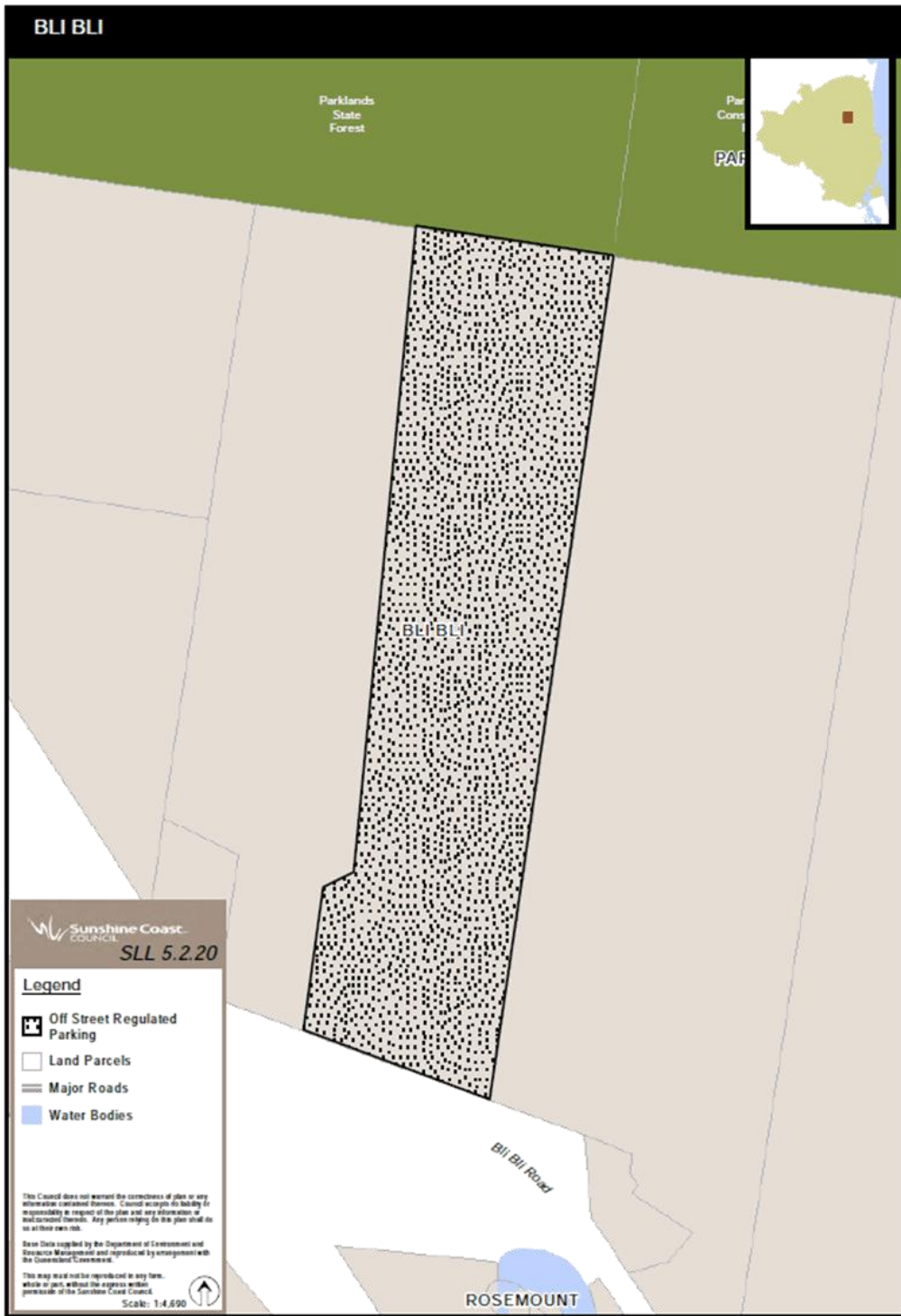




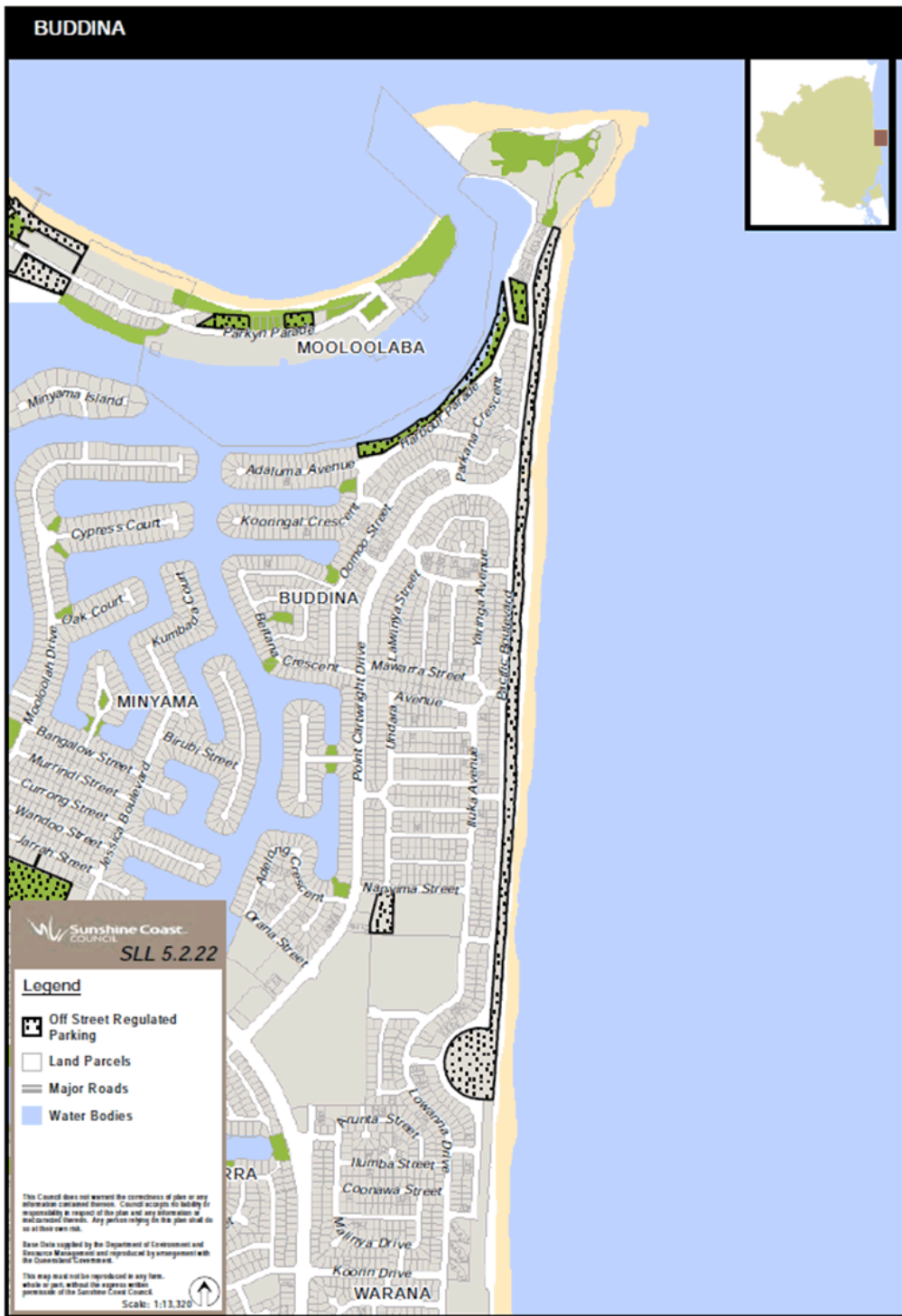


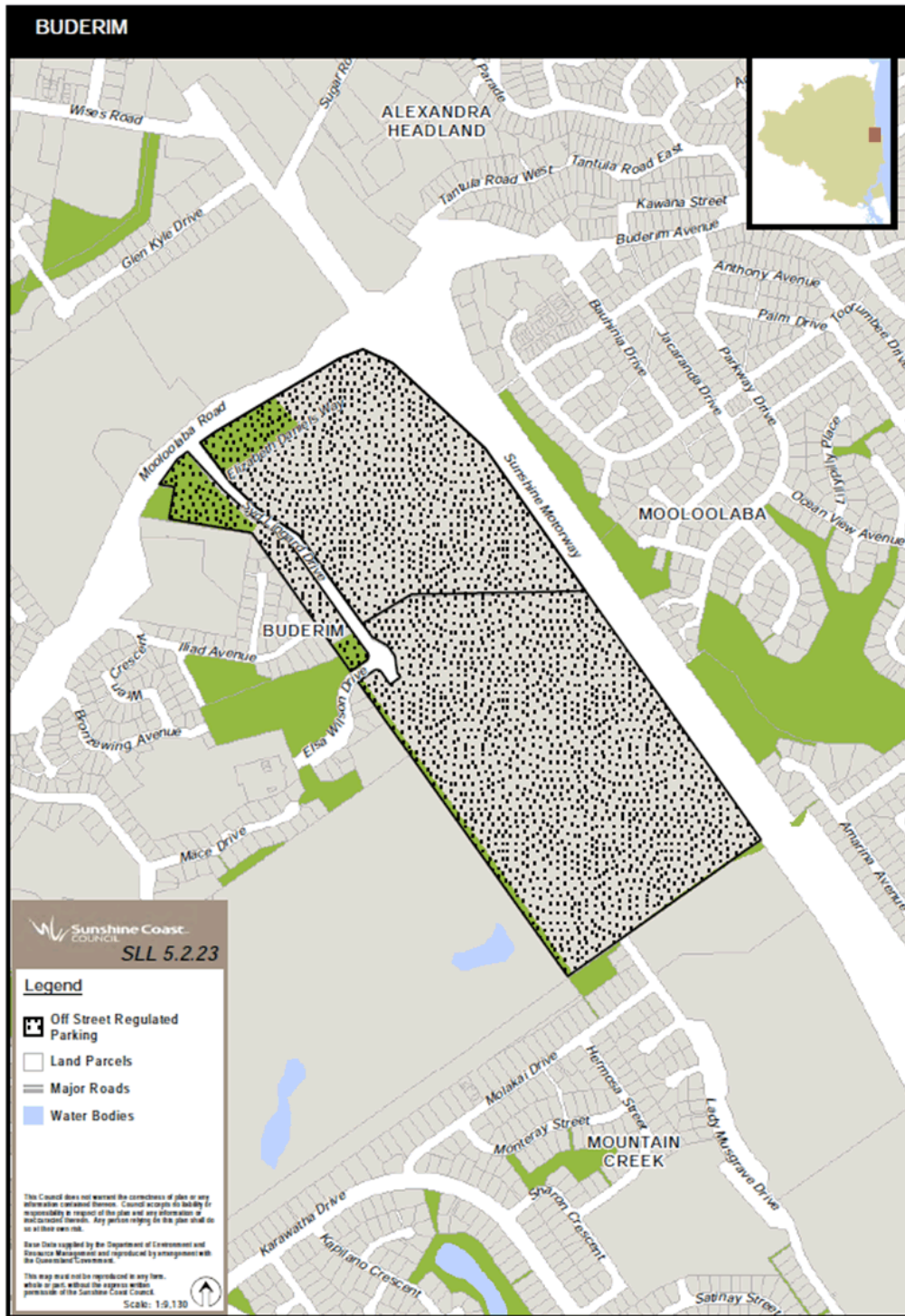


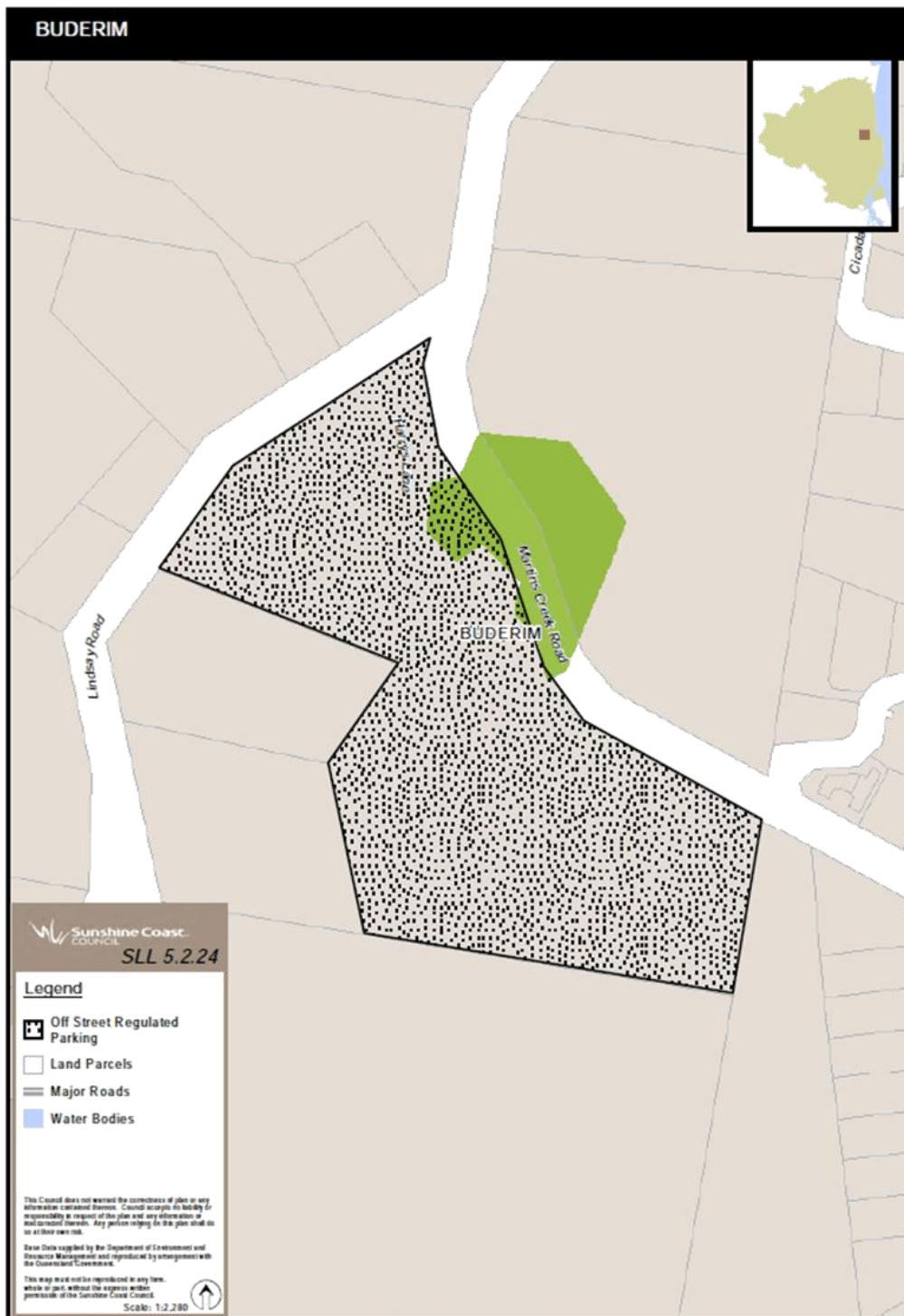


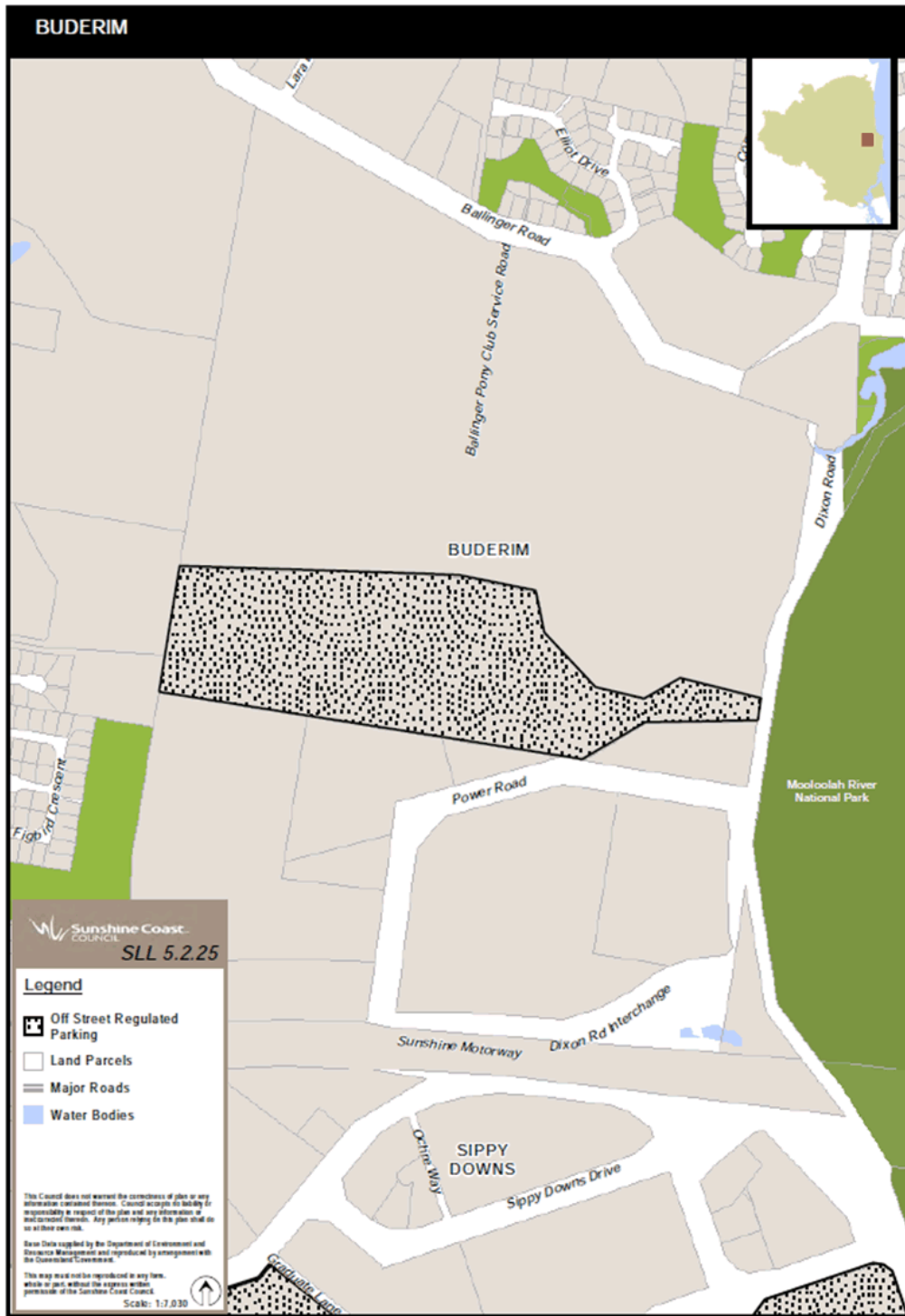


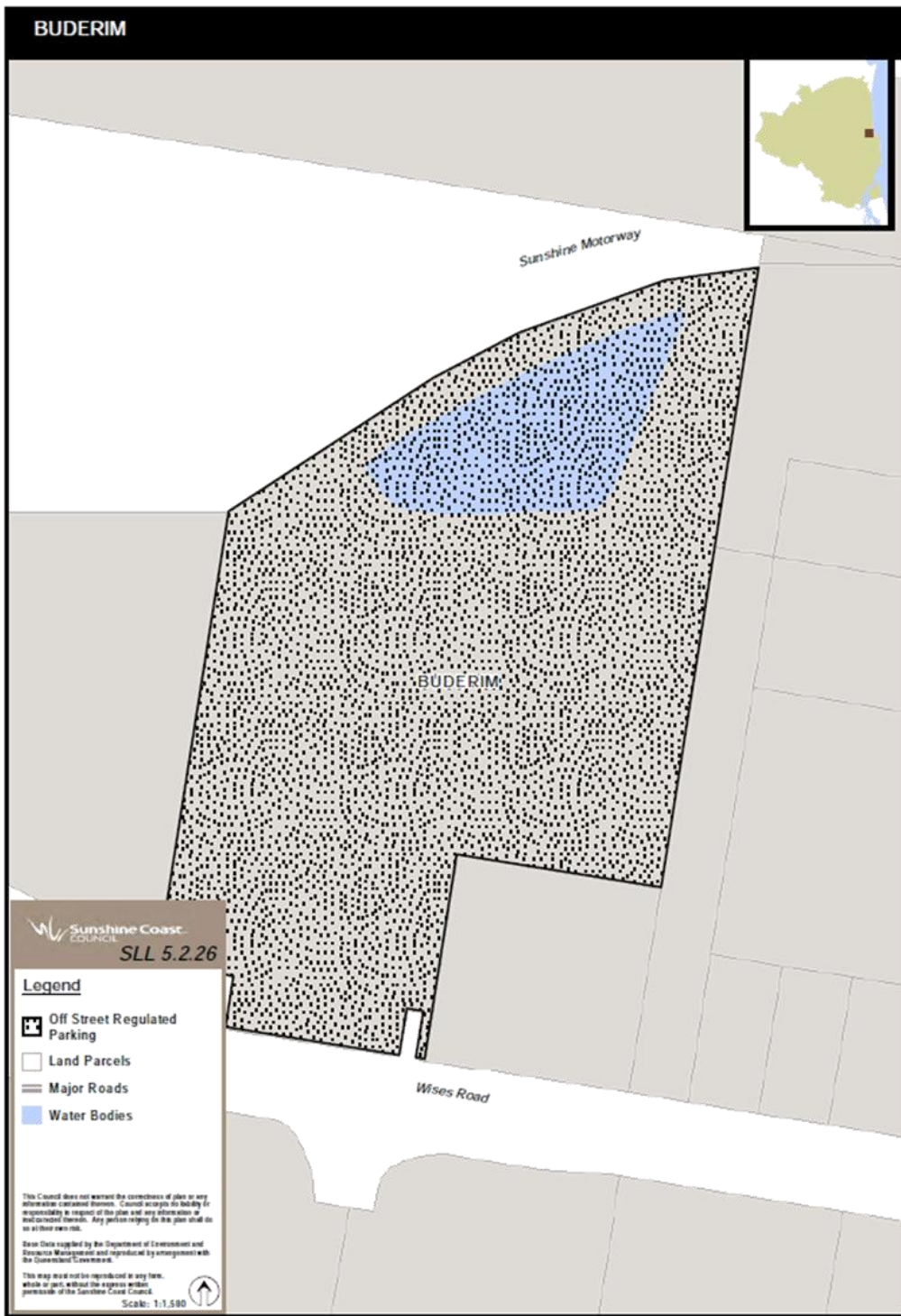




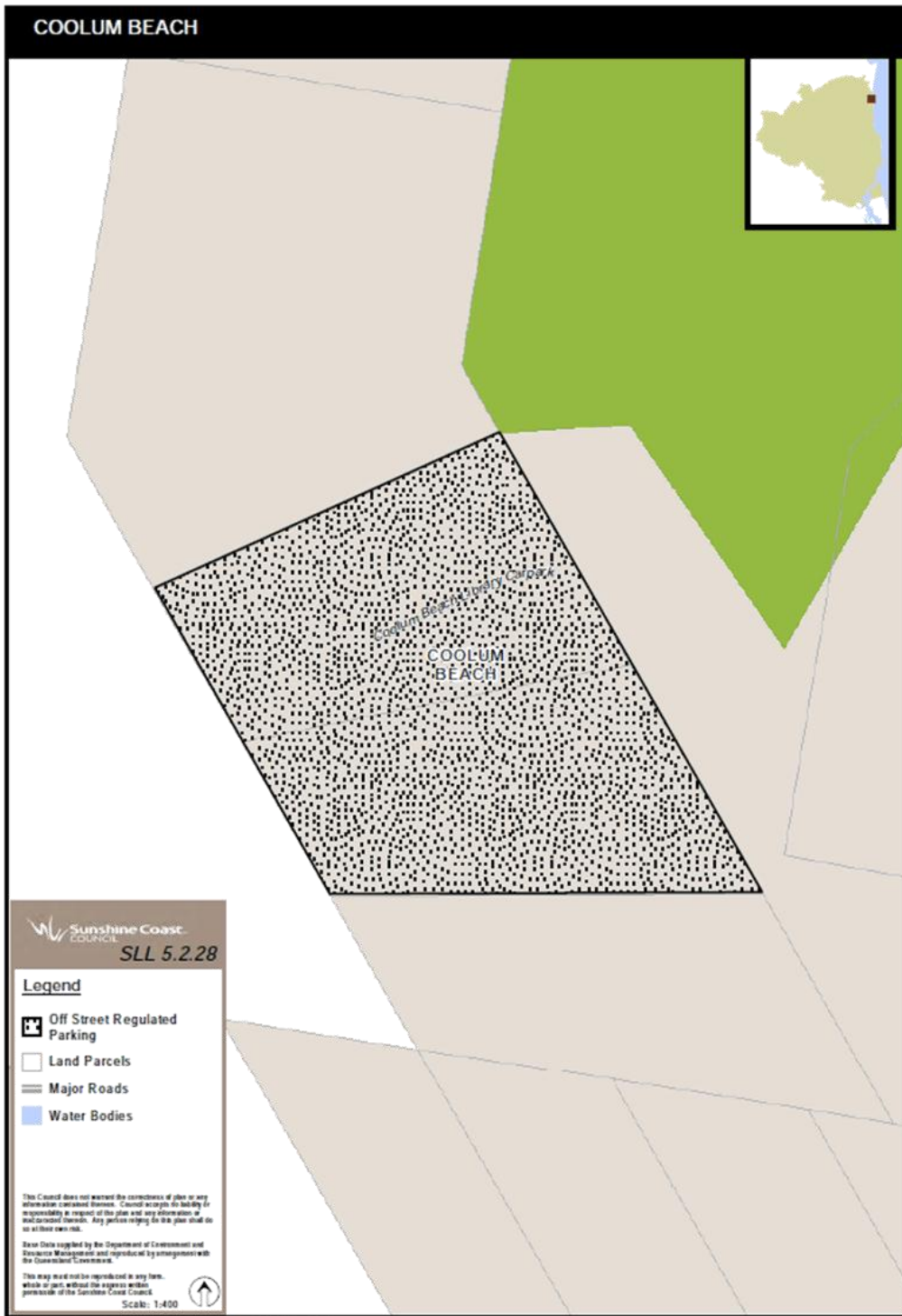


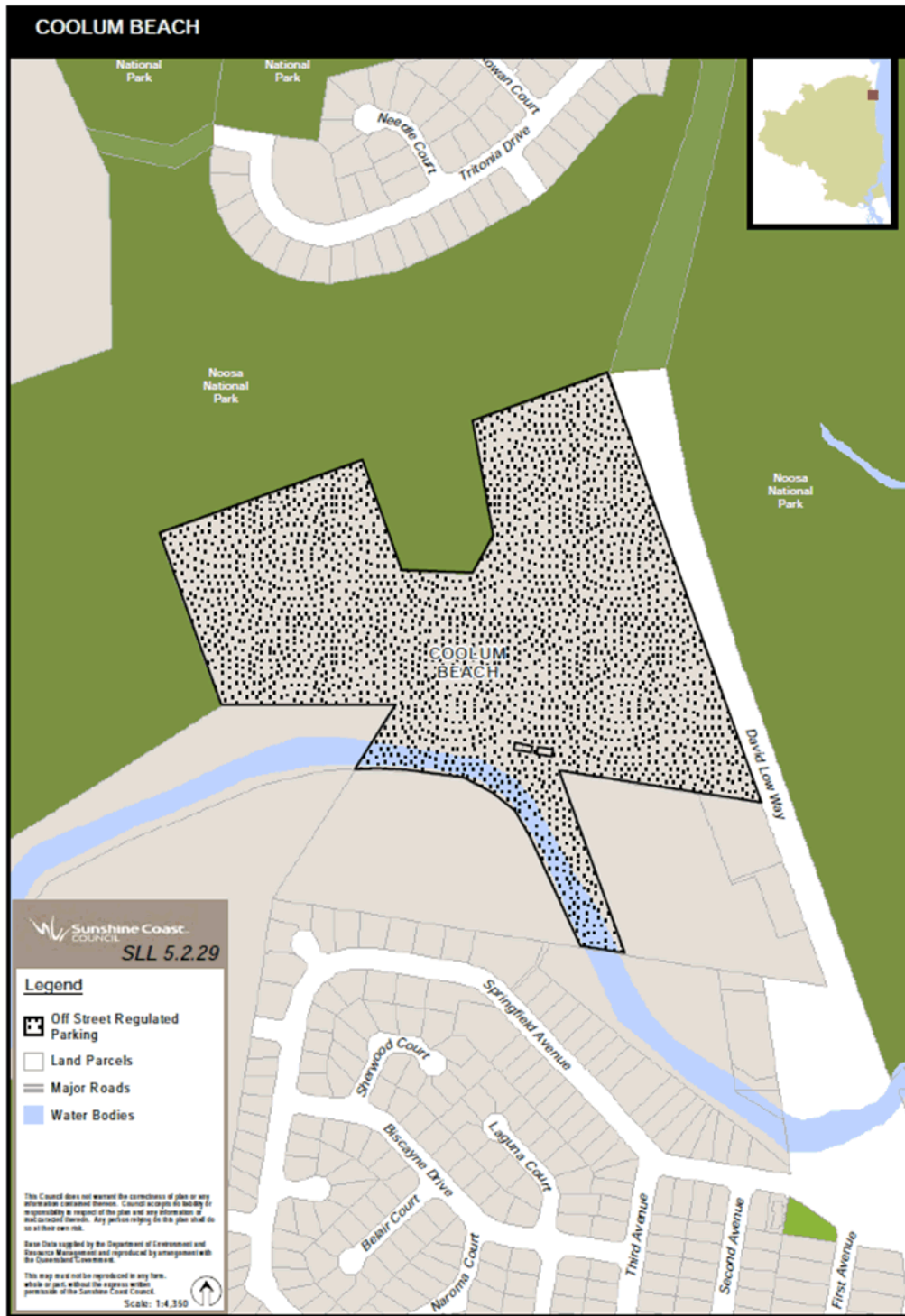


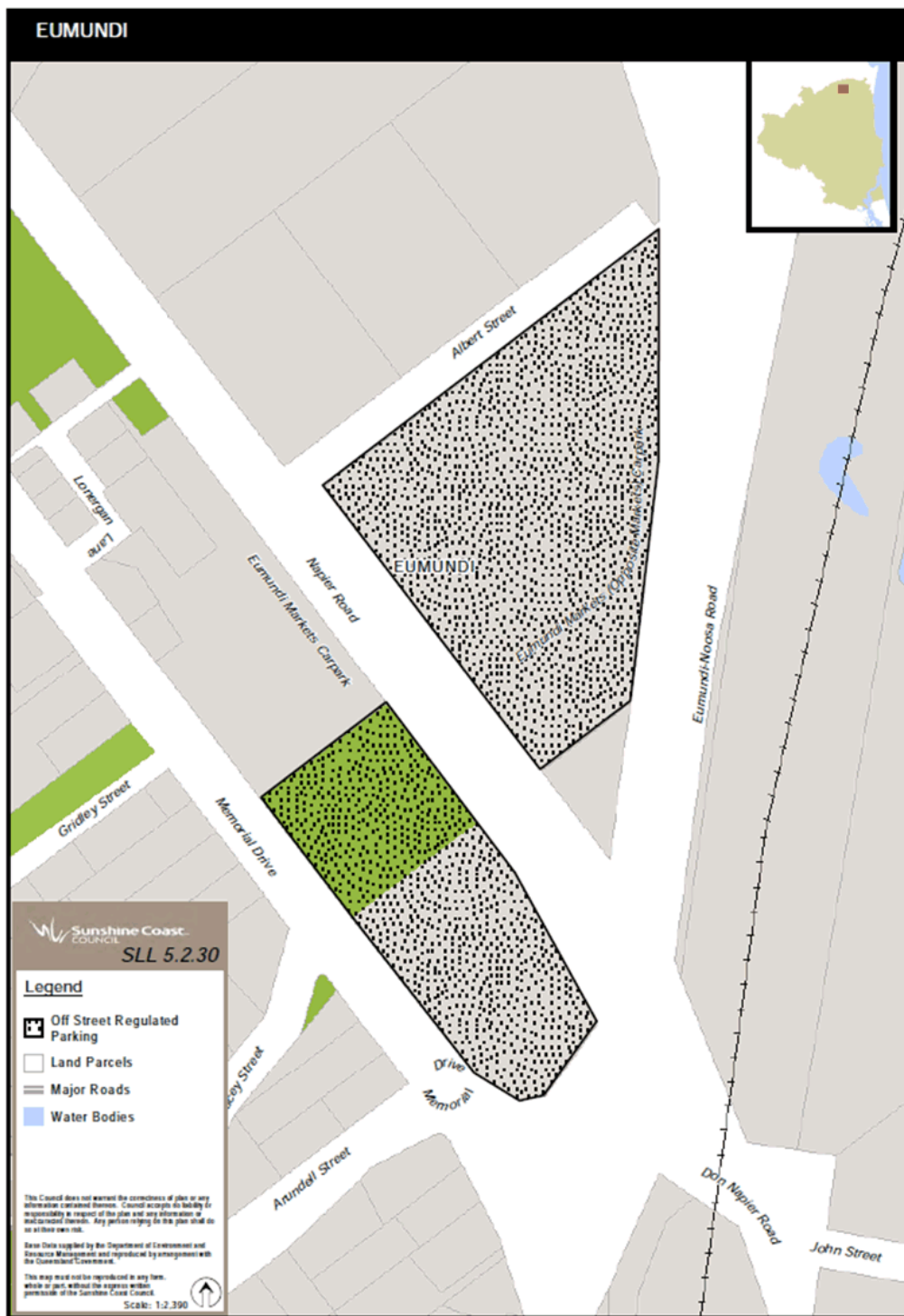


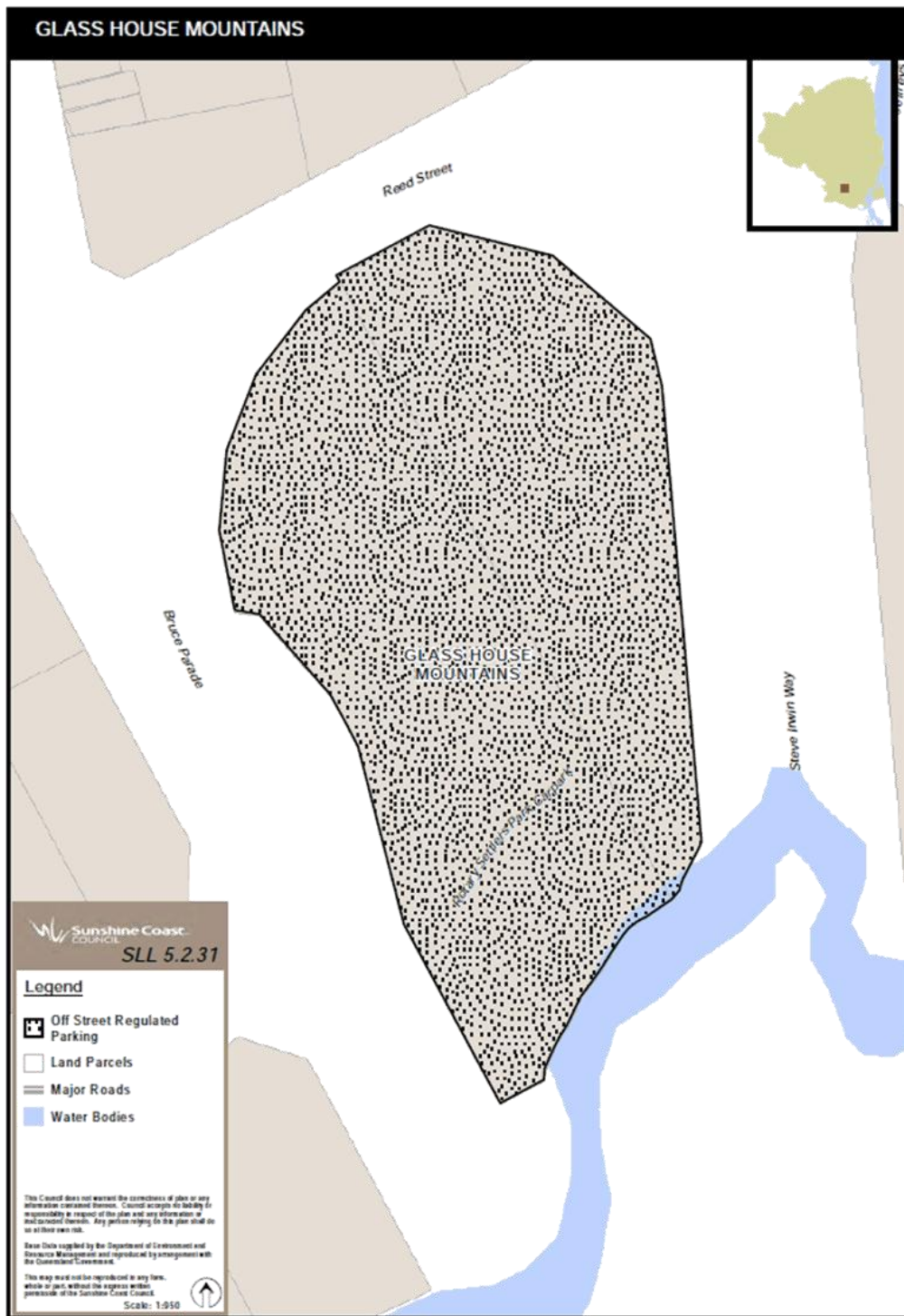








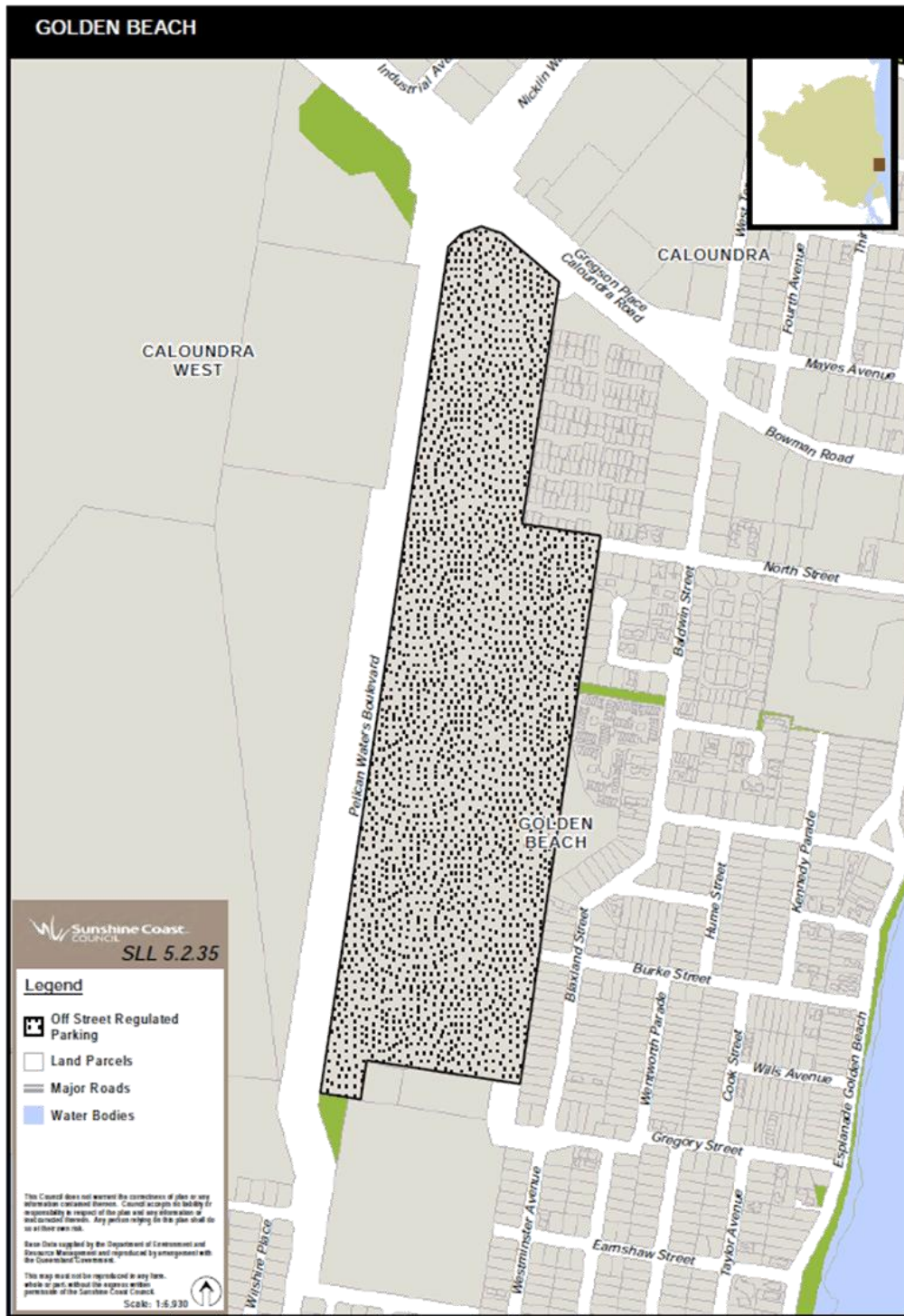


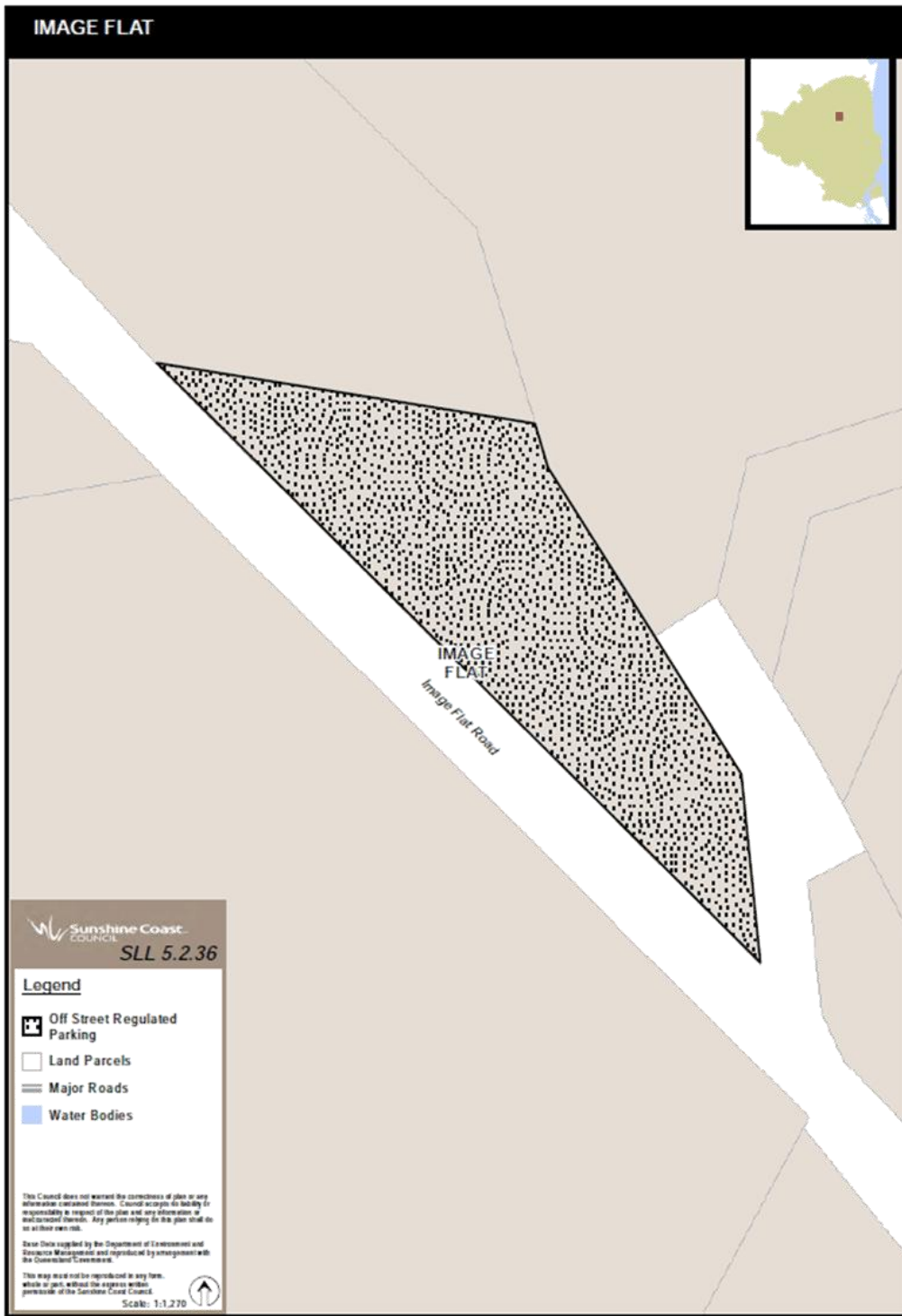






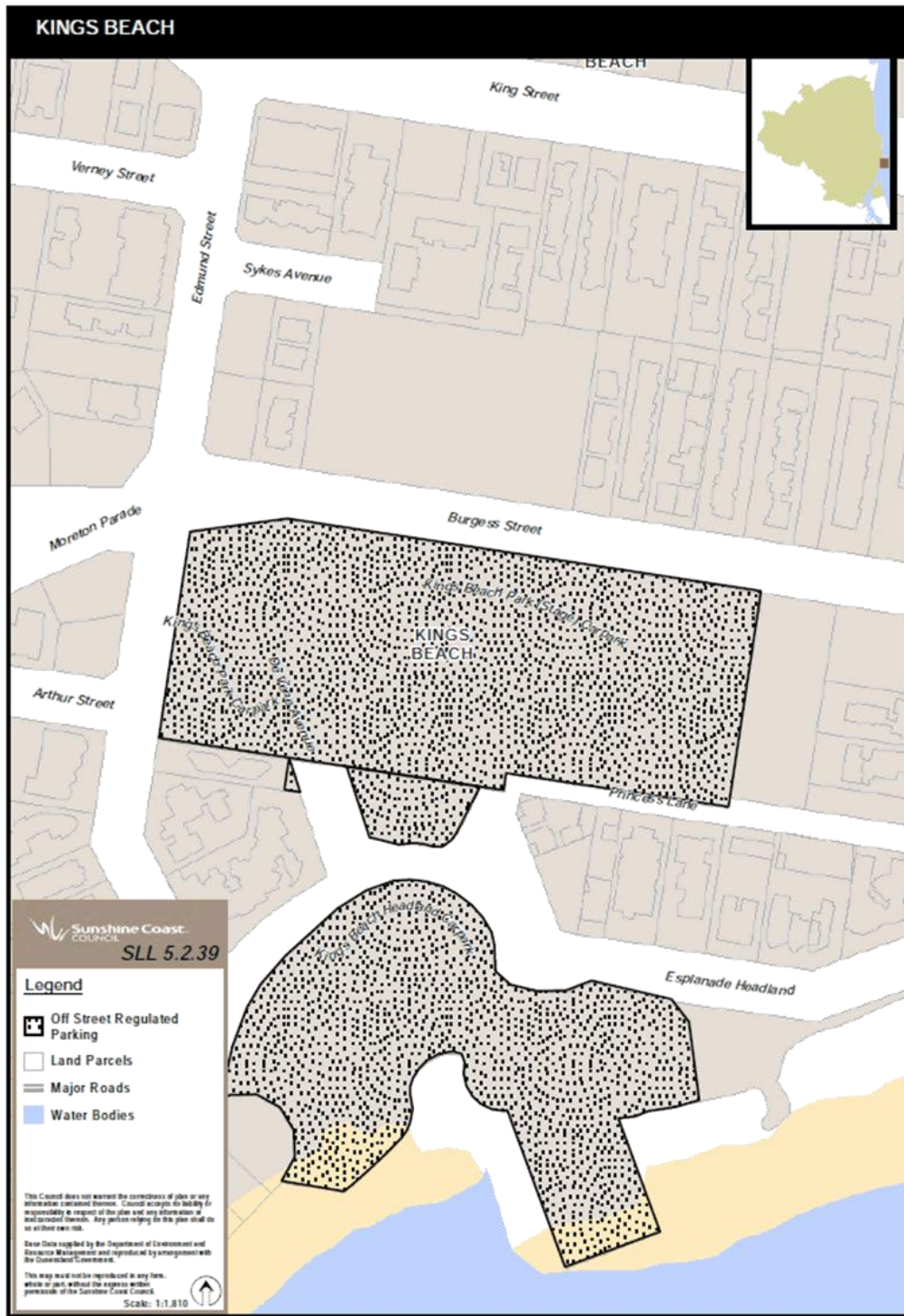


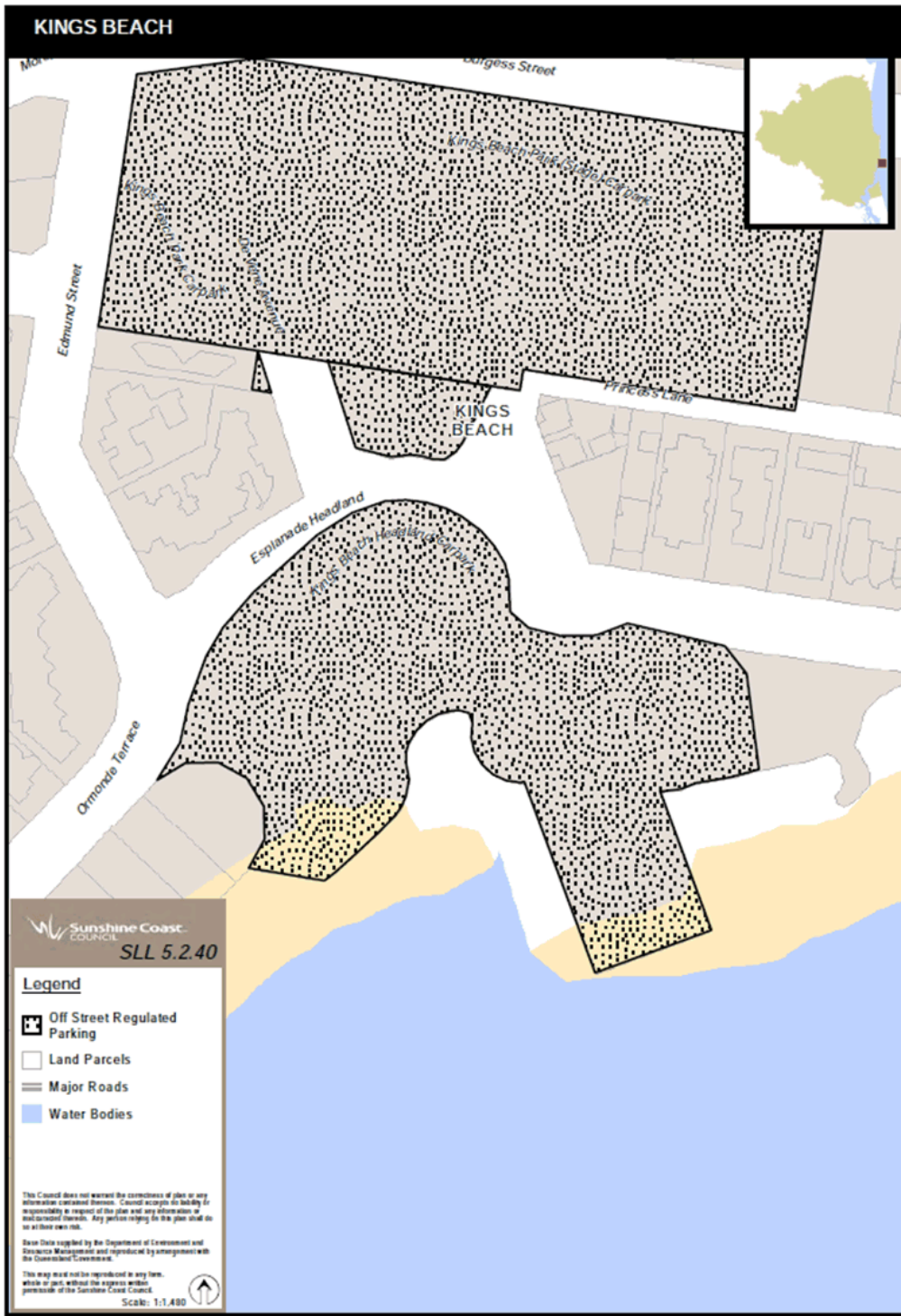




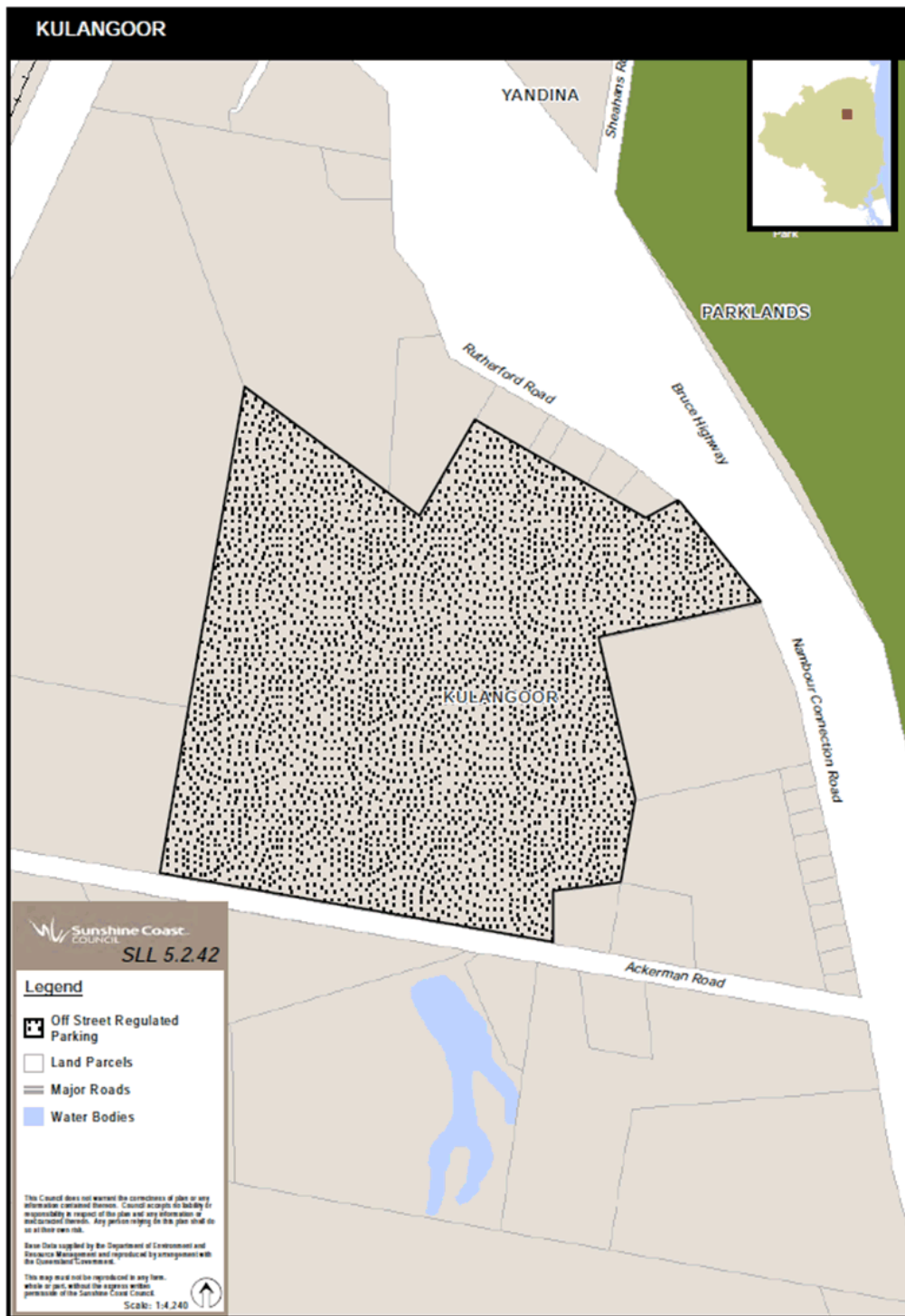


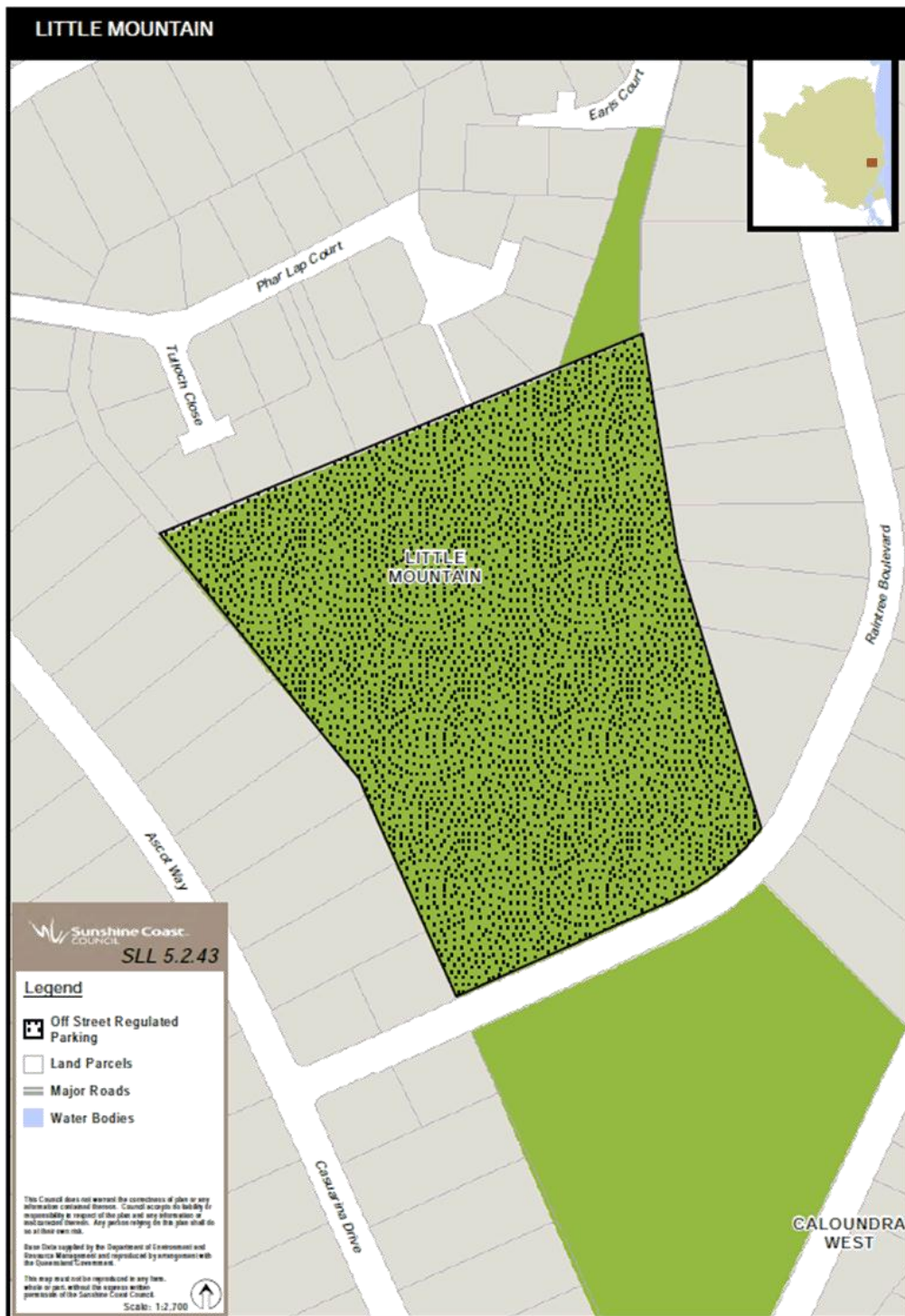


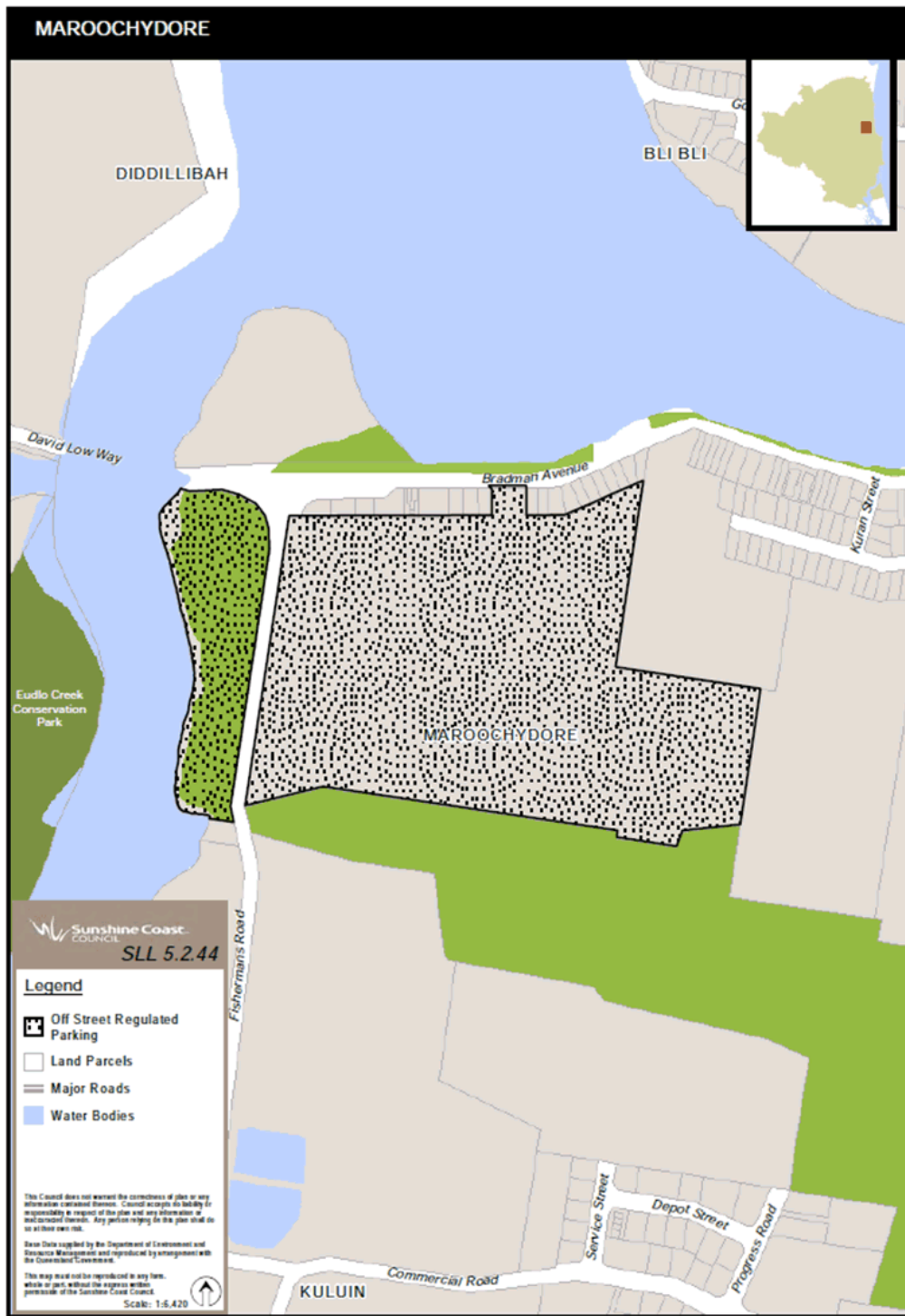


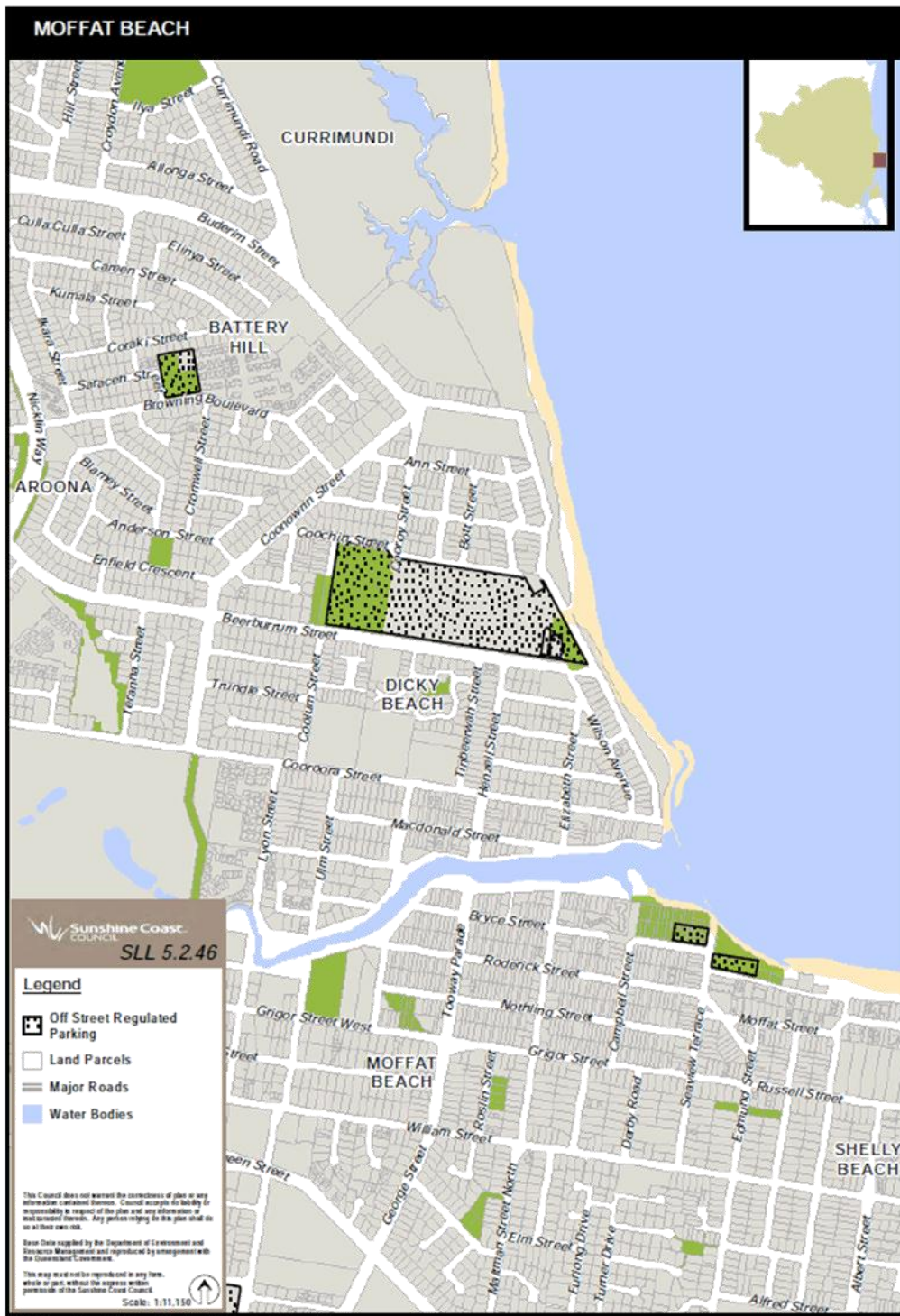


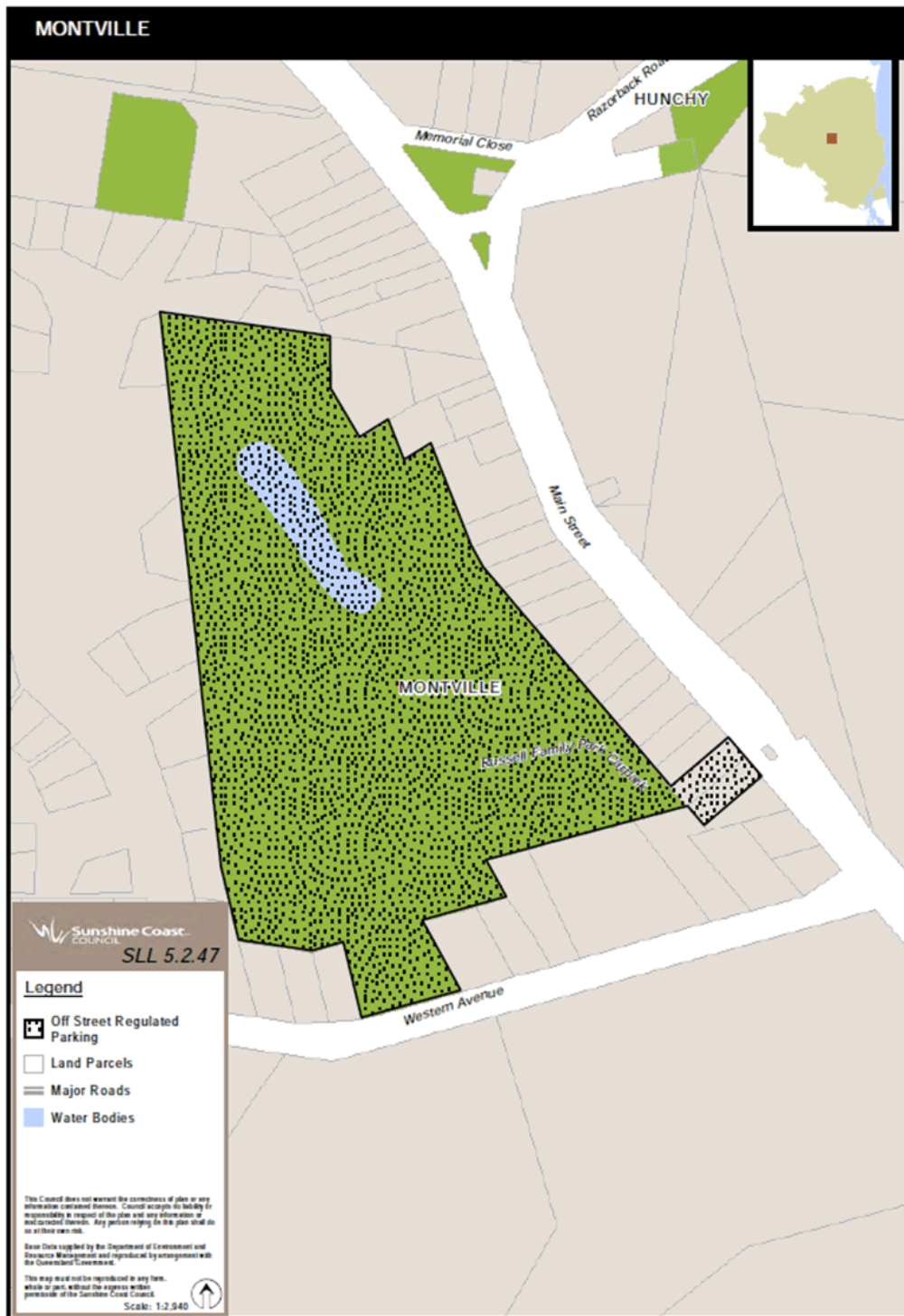


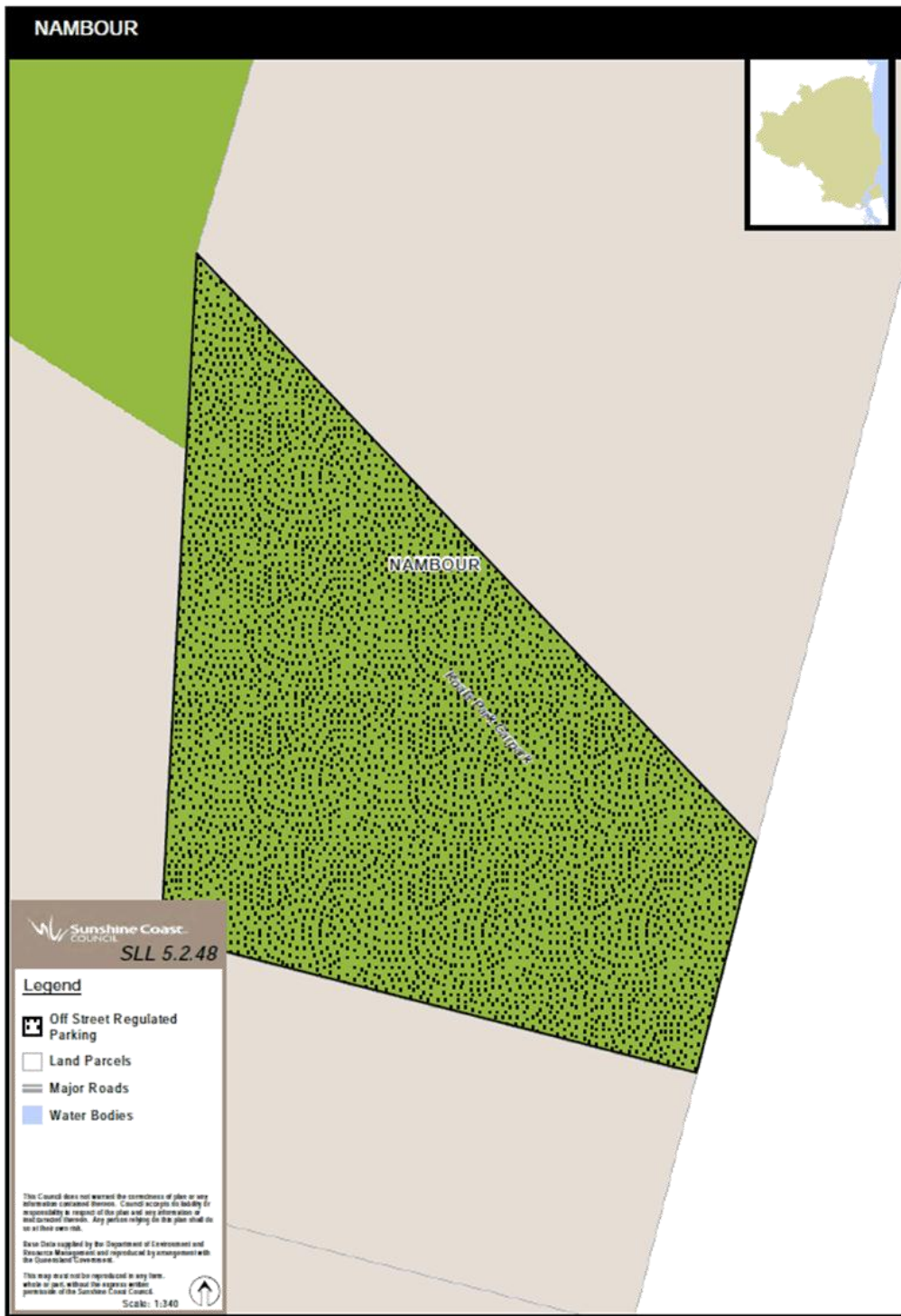




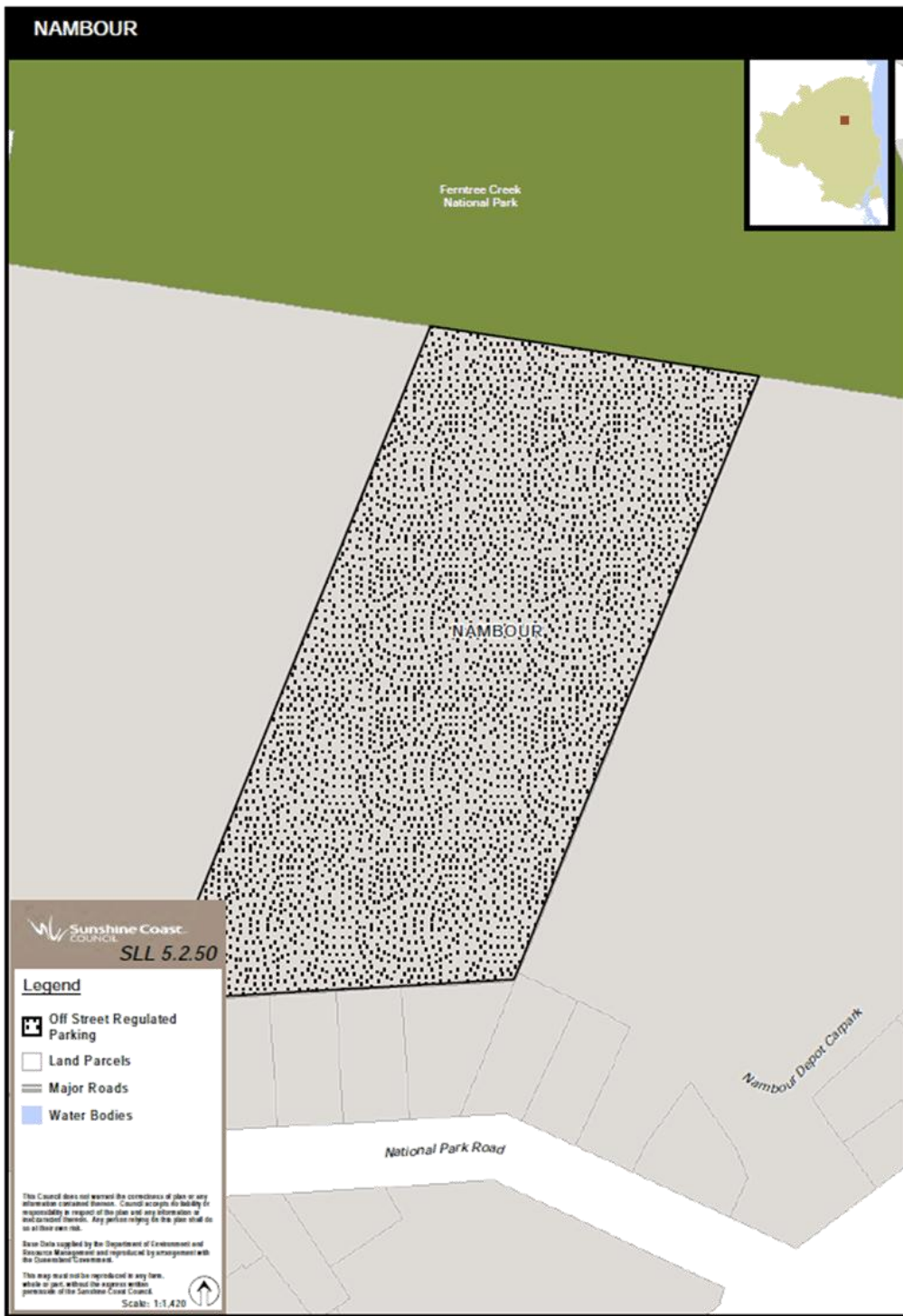


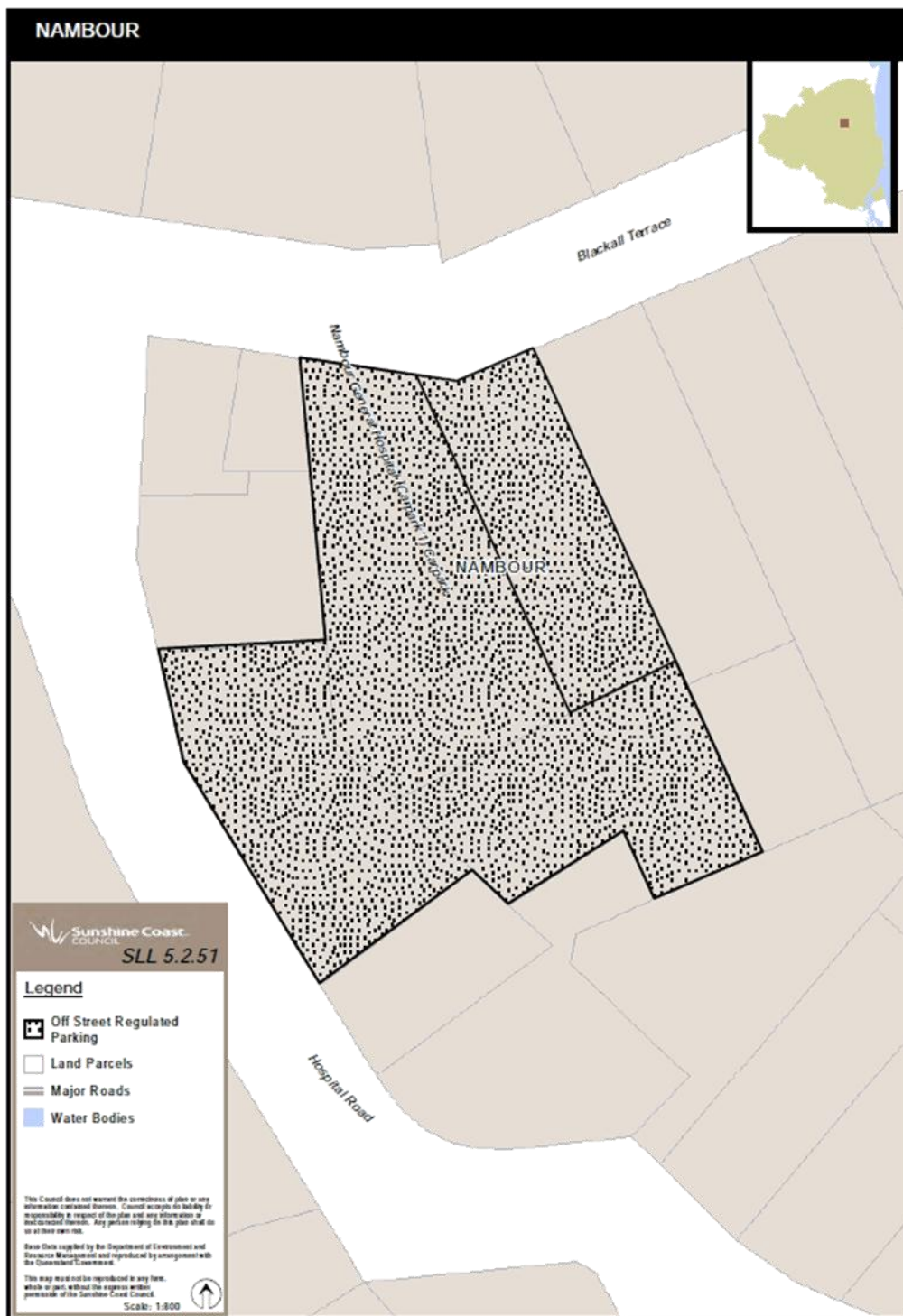


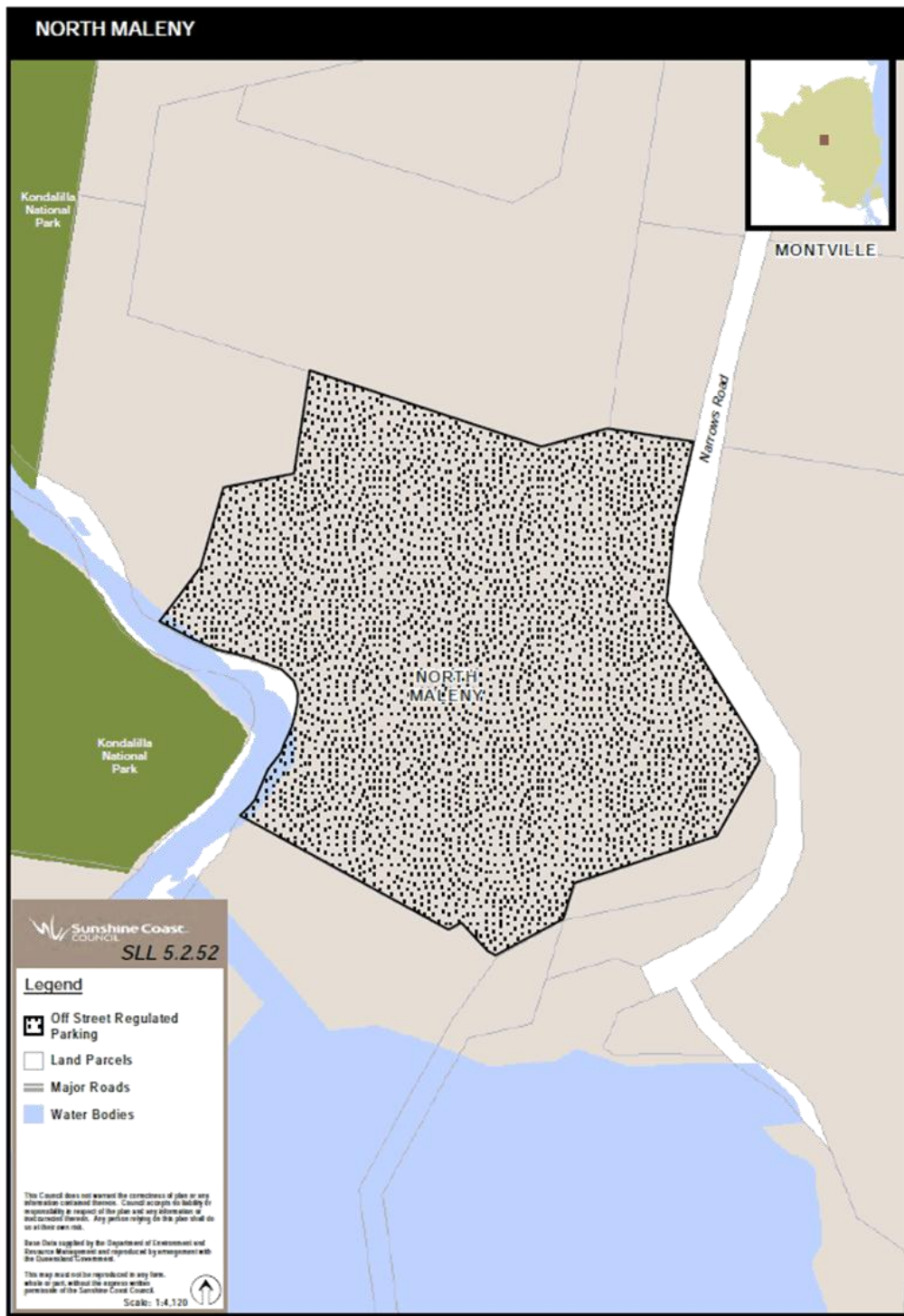


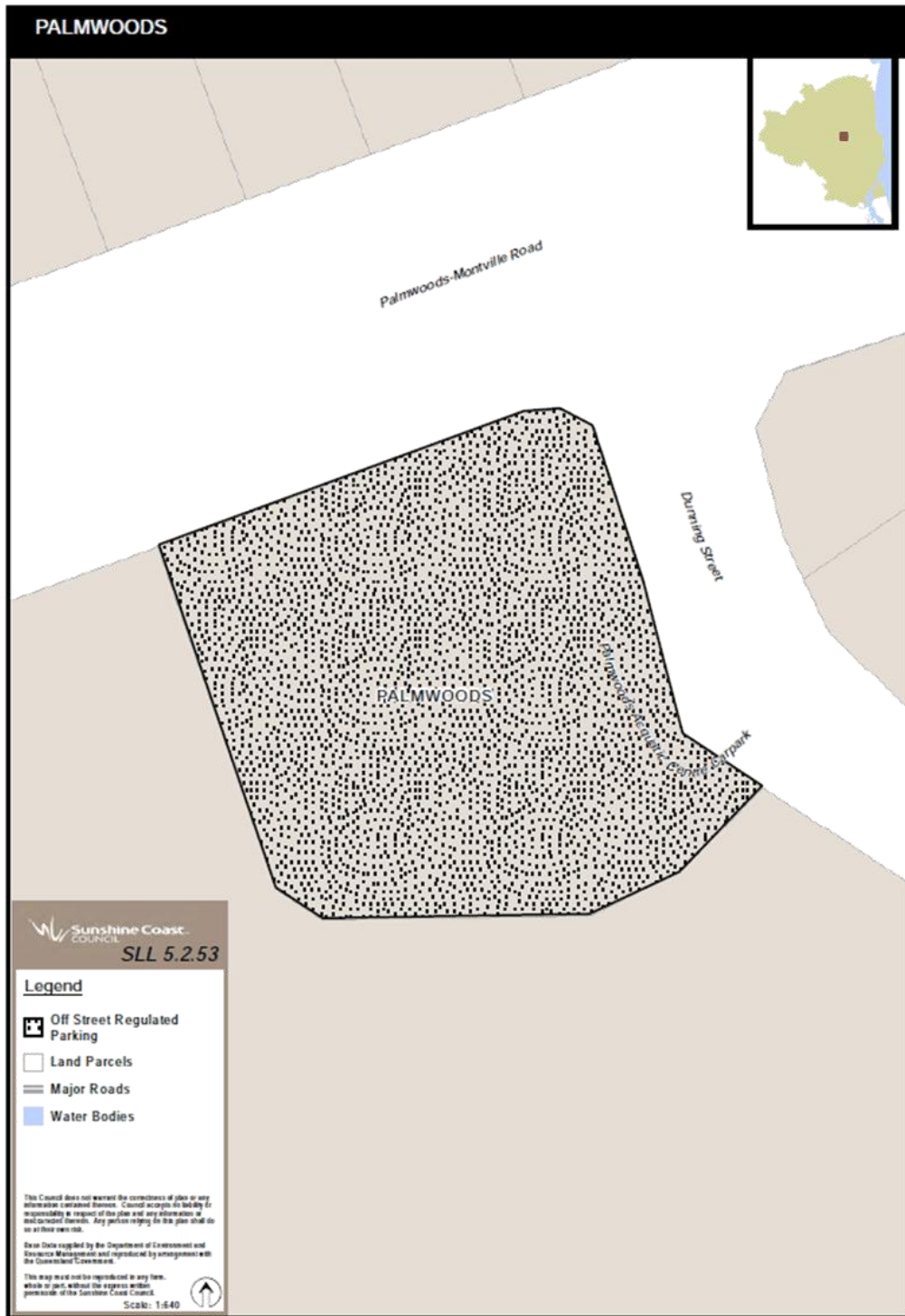


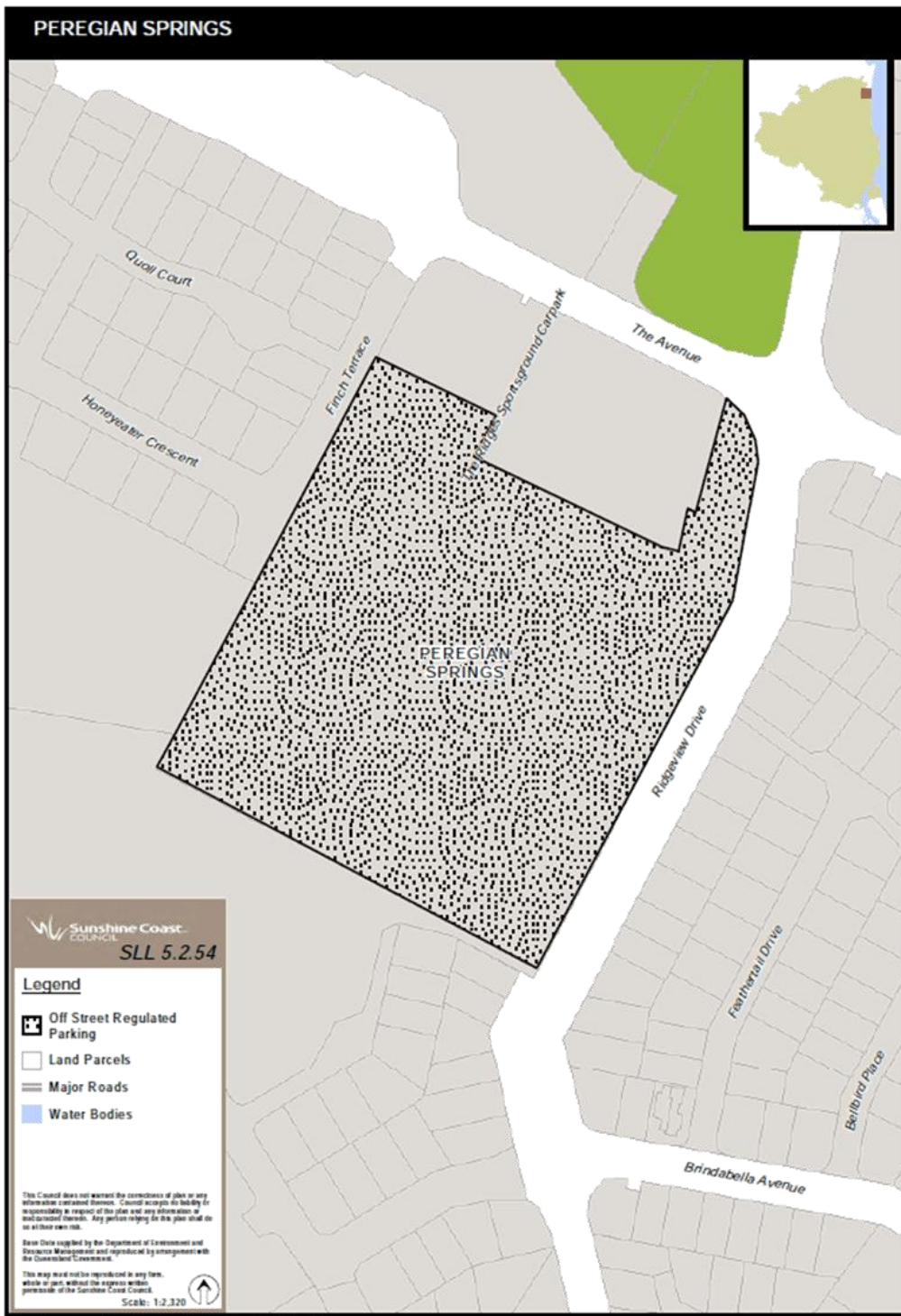


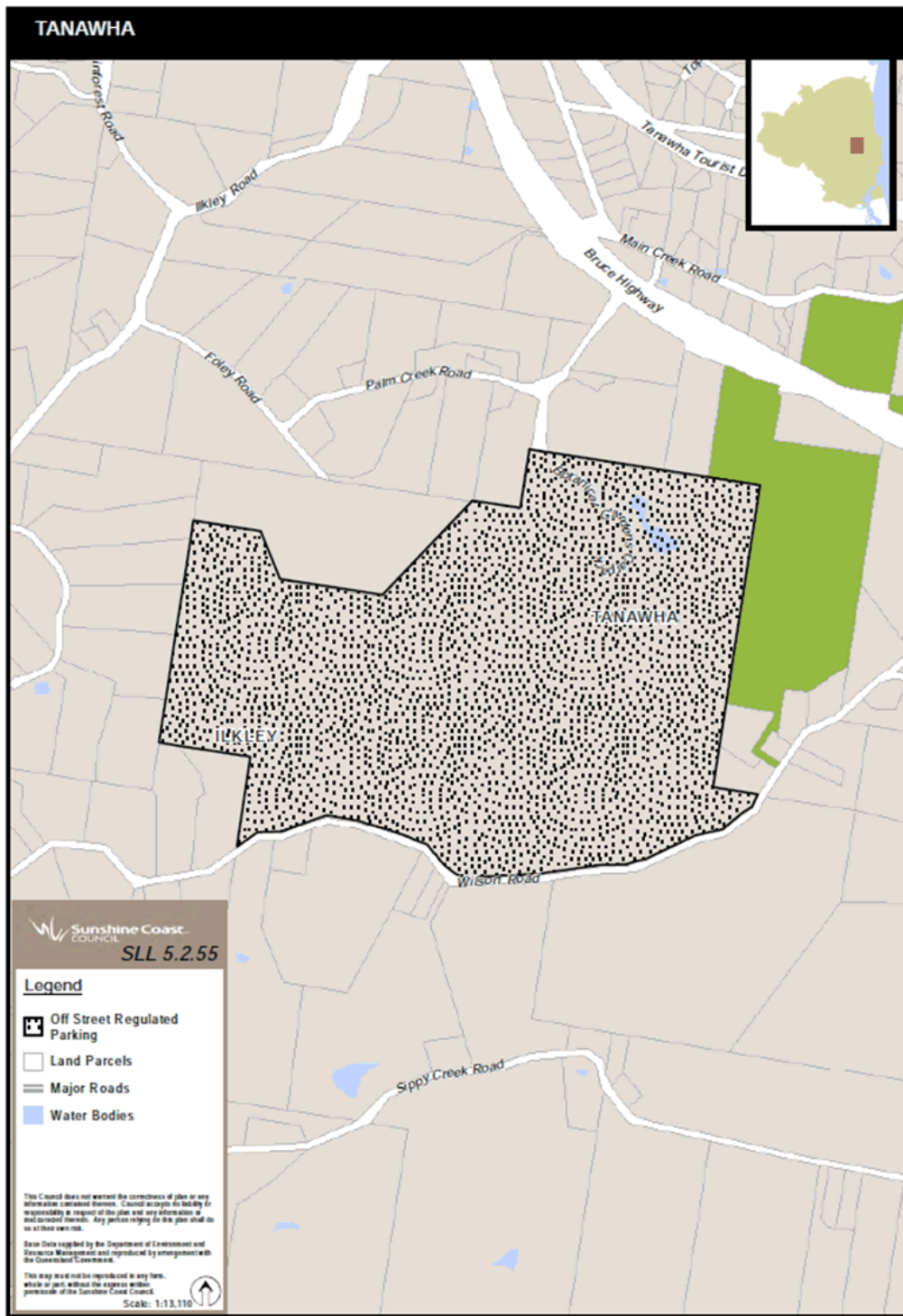


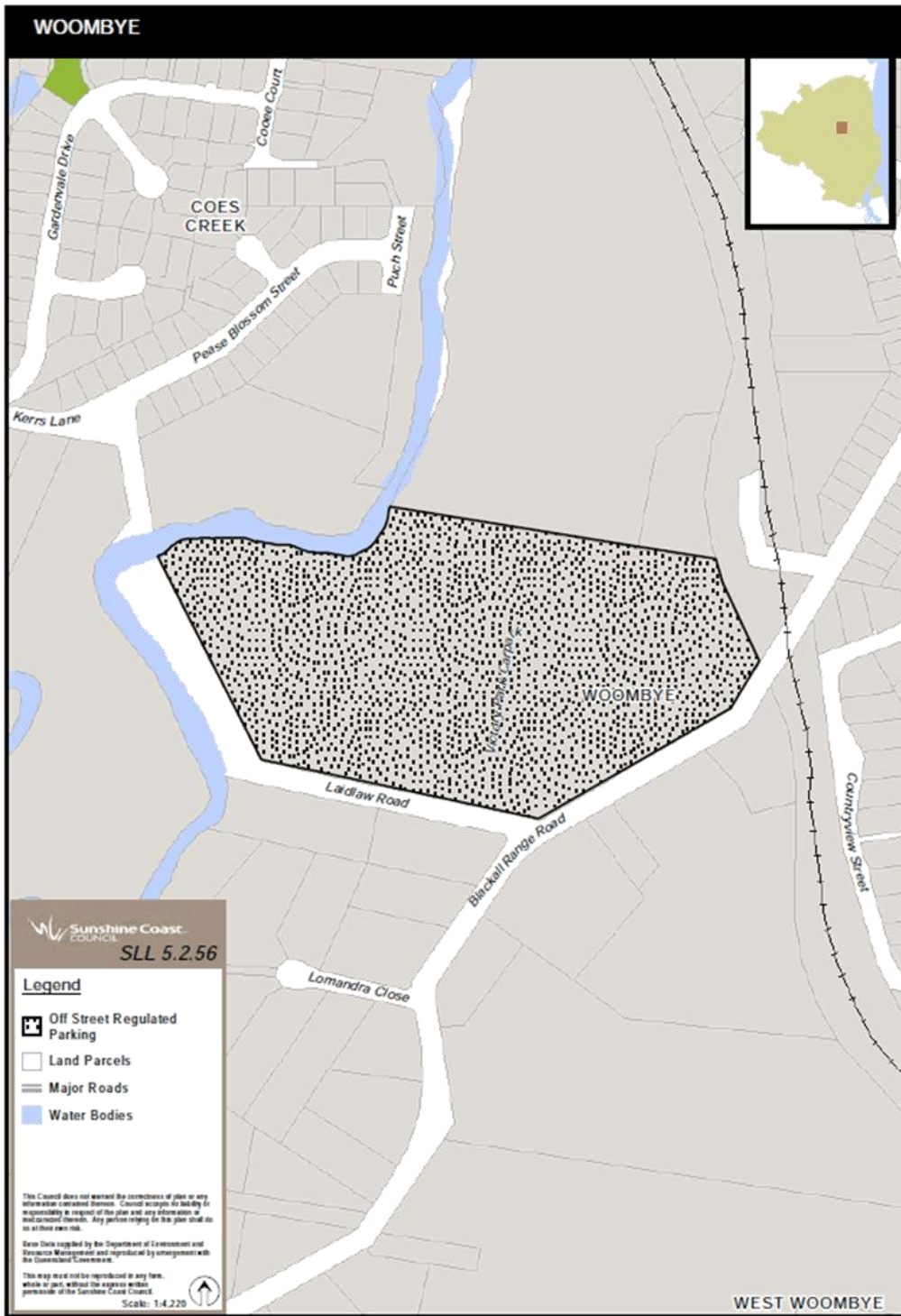












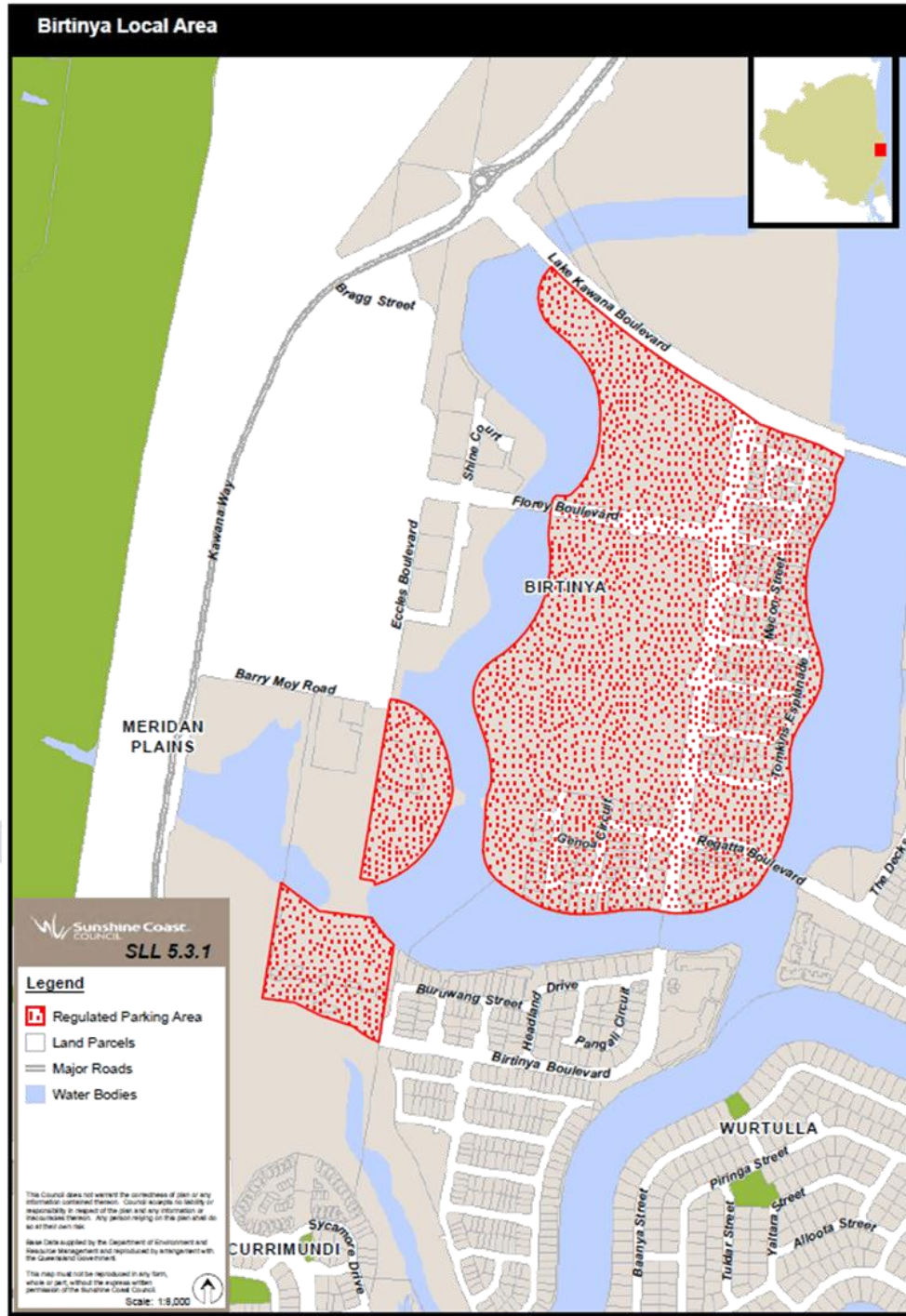


13 Amendment of sch 3 (Persons who may be issued with a parking permit)

- (1) Schedule 3, table, row 1 (relating to residential parking permit), column 2—
insert—
 - 4 residents within the Sippy Downs Regulated Parking Area as delineated in Map SLL5.3.2, including residents of multi-unit complexes
- (2) Schedule 3, from ‘Map SLL5.3.1 – Birtinya Regulated Parking Area’—
omit, insert—

DRAFT

Map SLL5.3.1 – Birtinya Regulated Parking Area



Map SLL5.3.2 – Sippy Downs Regulated Parking Area

