

Late Report

ITEM 8.3.2

Ordinary Meeting

Thursday, 26 February 2015

commencing at 9.00 am

Council Chambers, Corner Currie and Bury Streets, Nambour

TABLE OF CONTENTS

ITEM	SUBJECT	PAGE NO
8	REPORTS DIRECT TO COUNCIL	5
8.3	CORPORATE SERVICES	5
8.3.2	2016 LOCAL GOVERNMENT ELECTIONS - DIVISIONAL BOUNDARY REVIEW	5

8 REPORTS DIRECT TO COUNCIL**8.3 CORPORATE SERVICES****8.3.2 2016 LOCAL GOVERNMENT ELECTIONS - DIVISIONAL BOUNDARY REVIEW****File No:** ECM 260215**Author:** Team Leader Councillor Governance
Corporate Services Department**Appendices:** App A - Map 1 Proposed boundary change Division 6 and
Division 7Late Pg 13
App B - Map 2 Proposed boundary change Division 9 and
Division 10Late Pg 15
App C - Map 3 Proposed boundary change Division 1 and
Division 3Late Pg 17
App D - Map 4 Proposed boundary change Division 2 and
Division 3Late Pg 19

PURPOSE

The purpose of this report is to seek Council's approval to proposed electoral changes in advance of the 2016 local government elections. Council is required to review whether each of its divisions has a reasonable proportion of electors and give the Minister for Local Government and the Queensland Electoral Commissioner written notice of the results by 1 March 2015.

EXECUTIVE SUMMARY

The *Local Government Act 2009* (the Act) requires that all divided local governments must review their electoral quotas and give the Minister for Local Government and the Electoral Commissioner written notice of the results by 1 March 2015.

Sections 15 and 16 of the Act require that each division of a local government must have a reasonable number of electors and electoral divisions to meet divisional quotas at the time of the elections. Consequently, a review of voter numbers for each division has been undertaken based on data provided by the Electoral Commission of Queensland (ECQ) at 30 January 2015.

The Sunshine Coast Council is divided into 10 single member electoral divisions, of which, currently, Division 9 exceeds the maximum quota and Division 7 is below the minimum quota.

This report contains proposed amendments to Sunshine Coast Council divisional boundaries of Divisions 1, 2, 3, 6, 7, 9 and 10 as detailed in this report and shown in the attached maps.

The Minister for Local Government recommended councils also review their electoral arrangements. At this time the current arrangement of 10 single member divisions and one mayor is considered the most appropriate electoral representation for the Sunshine Coast community.

It is also noted that possible further boundary change may be necessary to align divisional boundaries to Federal statistical areas. More information on this issue will be received from the Electoral Commission in coming weeks, however, Council and the community will be invited to put forward submission at the appropriate time.

OFFICER RECOMMENDATION

That Council:

- (a) receive and note the report titled “2016 Local Government Elections - Divisional Boundary Review”; and
- (b) advise the Minister for Local Government and the Electoral Commissioner by 1 March 2015 that Sunshine Coast Regional Council Divisions 7 and 9 do not comply with quota specifications in section 15 of the *Local Government Act 2009* and recommends the following changes to divisional boundaries in order to meet the legislative quota requirements:
 - (i) transfer from Division 6 to Division 7 - approximately 2,376 voters, refer to Appendix A;
 - (ii) transfer from Division 9 to Division 10 - approximately 2,220 voters, refer to Appendix B; and
- (c) advise the Minister for Local Government and the Electoral Commissioner also of the following recommended boundary changes:
 - (i) transfer from Division 1 to Division 3 – minor variation with a very small, indeterminable number of voters, refer to Appendix C;
 - (ii) transfer from Division 3 to Division 2 – approximately 536 voters, refer to Appendix D; and
- (d) advise the Minister for Local Government that Council has also considered its electoral arrangements and finds that the current arrangement of 10 single member divisions and one mayor is the most appropriate electoral representation for the Sunshine Coast community at this time.

FINANCE AND RESOURCING

There are no financial or resourcing implications for current or future financial years associated with the content of this report.

CORPORATE PLAN

Corporate Plan Goal: *A public sector leader*
Outcome: 5.1 - Robust and transparent decision-making
Operational Activity: 5.1.1 - Develop a position on, and response to, any proposals in relation to further external boundary reviews that may impact on the Sunshine Coast local government area

CONSULTATION

Internal Consultation

- Mayor & Councillors
- Office of the CEO
- Manager, Major Urban Developments
- Geospatial Information Staff

External Consultation

Advice has been received from the Queensland Electoral Commission and the Department of Local Government.

Community Engagement

Council is not required to conduct an extensive community consultation process. The Change Commission will invite submissions and public consultation in arriving at its final determination with regard to boundary realignments for the Sunshine Coast Council area.

PROPOSAL

Legislative Requirements

Section 16 of the *Local Government Act 2009* (the Act) requires a local government to review whether each of its divisions has a reasonable proportion of electors and provide written notice to the Minister for Local Government and the Electoral Commissioner of the outcome of the review by 1 March in the year preceding quadrennial local government elections.

Only the Minister may propose a local government change, including changes to divisions of local governments, to the Change Commission.

Current divisional quotas

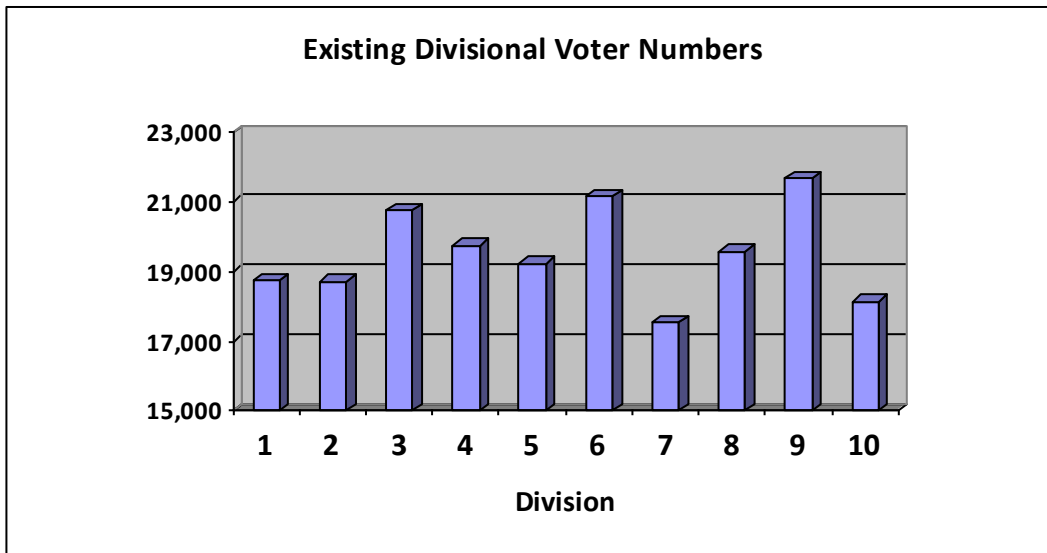
Section 15 of the Act provides that each division of a local government area must have a reasonable proportion of electors. A reasonable proportion of electors is calculated by dividing the total number of electors in the local government area by the number of councillors (excluding the mayor), plus or minus a 10% margin (quota).

The Electoral Commission of Queensland (ECQ) has provided Council with the total number of electors per division as at 30 January 2015. These are shown in Table A below.

As highlighted, Division 9 exceeds quota and Division 7 is below quota.

Table A – Existing Divisional Voter Numbers

Division	Electors at 30/01/2015	Average Enrolment	Low Quota	High Quota	% of Quota
1	18,729	19,520	17,568	21,472	-4.05
2	18,702	19,520	17,568	21,472	-4.19
3	20,738	19,520	17,568	21,472	6.24
4	19,747	19,520	17,568	21,472	1.16
5	19,231	19,520	17,568	21,472	-1.48
6	21,134	19,520	17,568	21,472	8.27
7	17,545	19,520	17,568	21,472	-10.12
8	19,569	19,520	17,568	21,472	0.25
9	21,660	19,520	17,568	21,472	10.96
10	18,142	19,520	17,568	21,472	-7.06
Total	195,197				



Methodology for Review of Internal Boundaries

The following considerations informed the review:

- Communities of interest
- Existing suburb / locality boundaries
- Population density
- Growth
- Natural boundaries, including roads, rivers, waterways
- The predictable pattern of boundaries to assist in future changes
- Options developed by staff
- Discussion with councillors
- Existing Statistical Analysis area (SA1) boundaries
- Future development proposals, where known, and population projections

New Divisional Boundary Proposal

The following table outlines the quotas as a result of the proposed boundary changes.

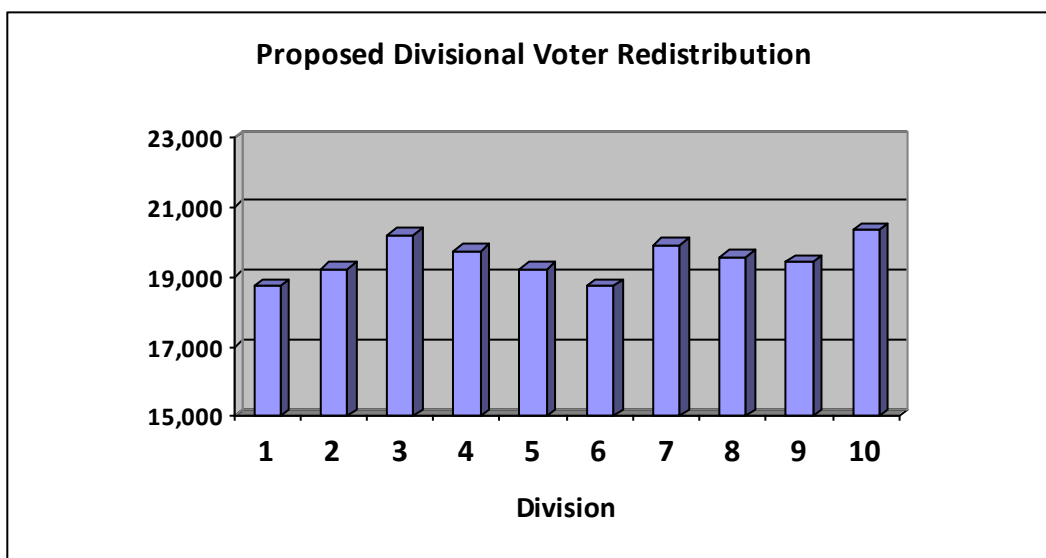
Consideration has been made for expected significant future population growth areas, in particular, Caloundra South, Palmview and the Maroochydore Principal Development Area. However, development in these areas is not expected to accelerate in the short-term nor significantly impact voter enrolment numbers at the 2016 local government elections.

At the time of writing, detailed divisional voter enrolment data has not been received from the ECQ. As such, estimated voter transfer numbers are included in this report based on voter enrolment figures for Statistical Analysis (SA1) areas as at 18 December 2014. It is believed that any changes in voter numbers between 18 December 2014 and 30 January 2015 are negligible with no impact on the outcome of this review.

Table B shows the number of electors by Division taking account of the recommended changes.

Table B – Proposed Divisional Voter Redistribution

Division	Electors at 30/01/2015	Average Enrolment	Low Quota	High Quota	% of Quota
1	18,729	19,520	17,568	21,472	-4.05
2	19,238	19,520	17,568	21,472	-1.44
3	20,202	19,520	17,568	21,472	3.50
4	19,747	19,520	17,568	21,472	1.16
5	19,231	19,520	17,568	21,472	-1.48
6	18,758	19,520	17,568	21,472	-3.90
7	19,921	19,520	17,568	21,472	2.06
8	19,569	19,520	17,568	21,472	0.25
9	19,440	19,520	17,568	21,472	-0.41
10	20,362	19,520	17,568	21,472	4.32
Total	195,197				



Following research and consultation with councillors, the following boundary realignments are proposed:

Division 6 to Division 7

To bring the number of electors in Division 7 within quota, it is proposed that approximately 2,376 electors transfer from Division 6 to Division 7. This proposal is shown as the shaded area on Map 1 (attached) and sees Division 7’s western boundary at King Street move south east to sections of Stringy Bark Road, Cogill Road and Dixon Road.

Elector numbers

Division 6	21,134
Less transfers to Division 7	<u>2,376</u>
Division 6 total	18,758

Division 7	17,545
Plus transfers from Division 6	<u>2,376</u>
Division 7 total	19,921

Division 9 to Division 10

To bring the number of electors in Division 9 within quota, it is proposed that approximately 2,220 electors transfer from Division 9 to Division 10 (refer to area shaded in Map 2). This proposal would see Division 9's north western boundary move east to unite communities currently split between Divisions 9 and 10, including Eumundi, North Arm, Ninderry, Bridges, Yandina and Kulangoor.

Division 9	21,660
Less transfers to Division 10	<u>2,220</u>
Division 9 total	19,440

Division 10	18,142
Plus transfers from Division 9	<u>2,220</u>
Division 10 total	20,362

Division 1 to Division 3

During consultation, Divisional Councillors also recommended that the boundary between Divisions 1 and 3 be amended to transfer the emerging community of Creekwood into Division 3. This proposal sees the current boundary move north to Corbould Way along the northern boundaries of numbers 244858 and 244711. Refer to the area shaded in Map 3 attached. No information is currently available at the time of writing about the number of voters to be transferred from the area, however, as this is a new development estate currently under construction, the number of voters to be transferred is very low, if any at the moment but naturally will have increased by the 2016 local government elections.

There is a strong link between the new Creekwood development area which is bordered by Parklands Boulevard, Meridan Way and Corbould Way and the existing Little Mountain community. This small pocket is viewed as being out of place in Division 1.

Division 3 to Division 2

Divisional councillors also recommended that approximately 536 electors from Division 3 be transferred to Division 2. This boundary change would see the Division 2 / 3 boundary move north to Beerburum Street, along Coonowrin Street and along Buderim Street to the coast. These are three significant streets in the area and would form an easily recognisable boundary (refer to area shaded in Map 4).

Division 3	20,738
Less transfers to Division 2	536
Division 3 total	20,202

Division 2	18,702
Plus transfers from Division 3	536
Division 2 total	19,238

This amendment has been recommended to unite the community of Dicky Beach within the same division but also takes into account the growth currently experienced in Division 3, particularly after the transfer of the Creekwood (Division 1) electors.

Electoral Arrangements

The Minister for Local Government, in his correspondence of 24 September 2014, invited Council to review its current electoral arrangements, including changes to the number of councillors and from being divided to an undivided council for the 2016 elections.

Sunshine Coast Council is made up of 10 single member divisions and one mayor. Councillor views on current electoral arrangements and submissions for electoral change were sought in December 2014. It remains the view that current arrangements provide the most appropriate electoral representation for the region at this time.

It is also noted that possible further boundary change may be necessary to align divisional boundaries to Federal statistical areas. More information on this issue will be received from the Electoral Commission in coming weeks, however, Council and the community will be invited to put forward submission at the appropriate time.

Legal

Section 16 of the Act provides that local governments must review their electoral quotas and give the Minister for Local Government and the Electoral Commissioner written notice of the results by 1 March 2015.

Section 15 of the Act provides for each division of local government area to have a reasonable proportion of electors. When changing the divisions of a local government area, the reasonable proportion of electors must be worked out as near as practicable to the time the change is to happen.

Section 18 of the Act states that "only the Minister may propose a local government change to the change commission".

Policy

No Council policies relate to this report.

Risk

Council is required to submit to the Minister for Local Government and the Electoral Commissioner the outcome of its electoral boundary review by 1 March 2015.

Previous Council Resolution

There are no previous Council resolutions that relate to this report.

Related Documentation

There is no related documentation relevant to this report.

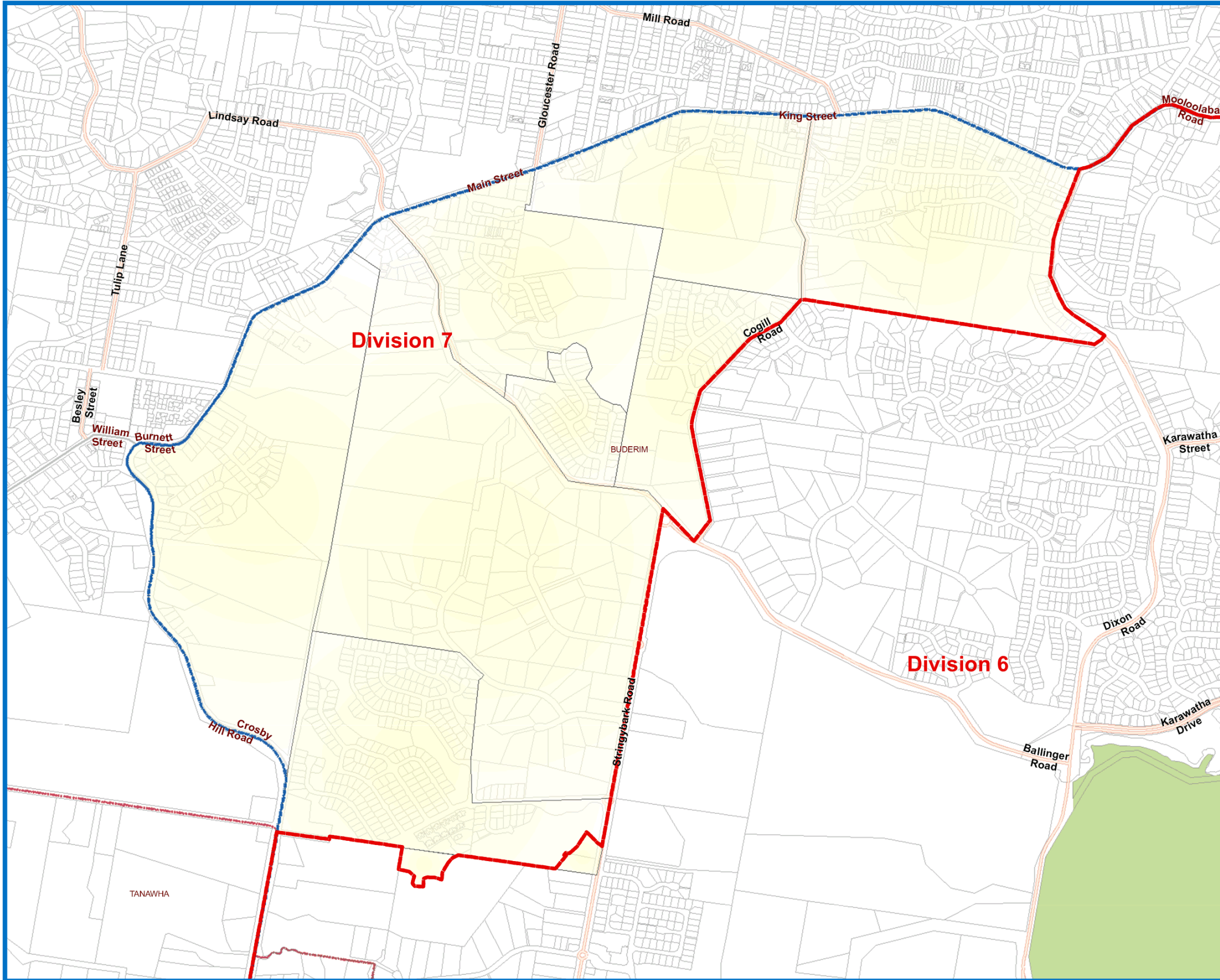
Critical Dates

The Minister for Local Government and the Electoral Commissioner must be notified in writing the results of Council's review by 1 March 2015.

Implementation

A submission outlining Council's proposed electoral changes will be prepared based on the recommendations and content of this report and forwarded to the Minister prior to 1 March 2015 under the signature of the Chief Executive Officer.

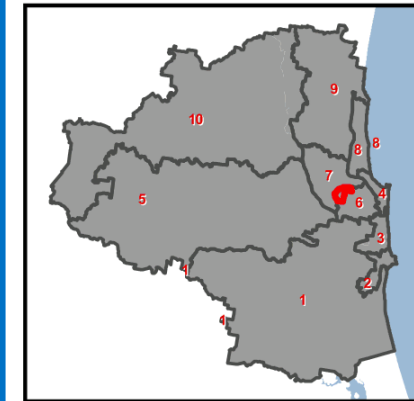
2016 Election - Divisional Boundary Review



Map 1
Proposed boundary change
Division 6 and Division 7

Legend

- Proposed Electoral Divisional Boundaries
- Highways and Motorways
- SA1 areas
- Current Electoral Divisional Boundaries
- Property Boundaries
- Railway Lines
- Protected Areas
- Localities



Scale: 1:8,670

Sunshine Coast Council
 Locked Bag 72
 Sunshine Coast Mail Centre Qld 4560
 [e] mapping@sunshinecoast.qld.gov.au
 [w] www.maps.sunshinecoast.qld.gov.au
 [p] 07 5475 7272

Disclaimer
 While every care is taken to ensure the accuracy of this product, neither the Sunshine Coast Council nor the State of Queensland makes any representations or warranties about its accuracy, reliability, completeness or suitability for any particular purpose and disclaims all responsibility and all liability (including without limitation, liability in negligence) for all expenses, losses, damages (including indirect or consequential damage) and costs that may occur as a result of the product being inaccurate or incomplete in any way or for any reason.

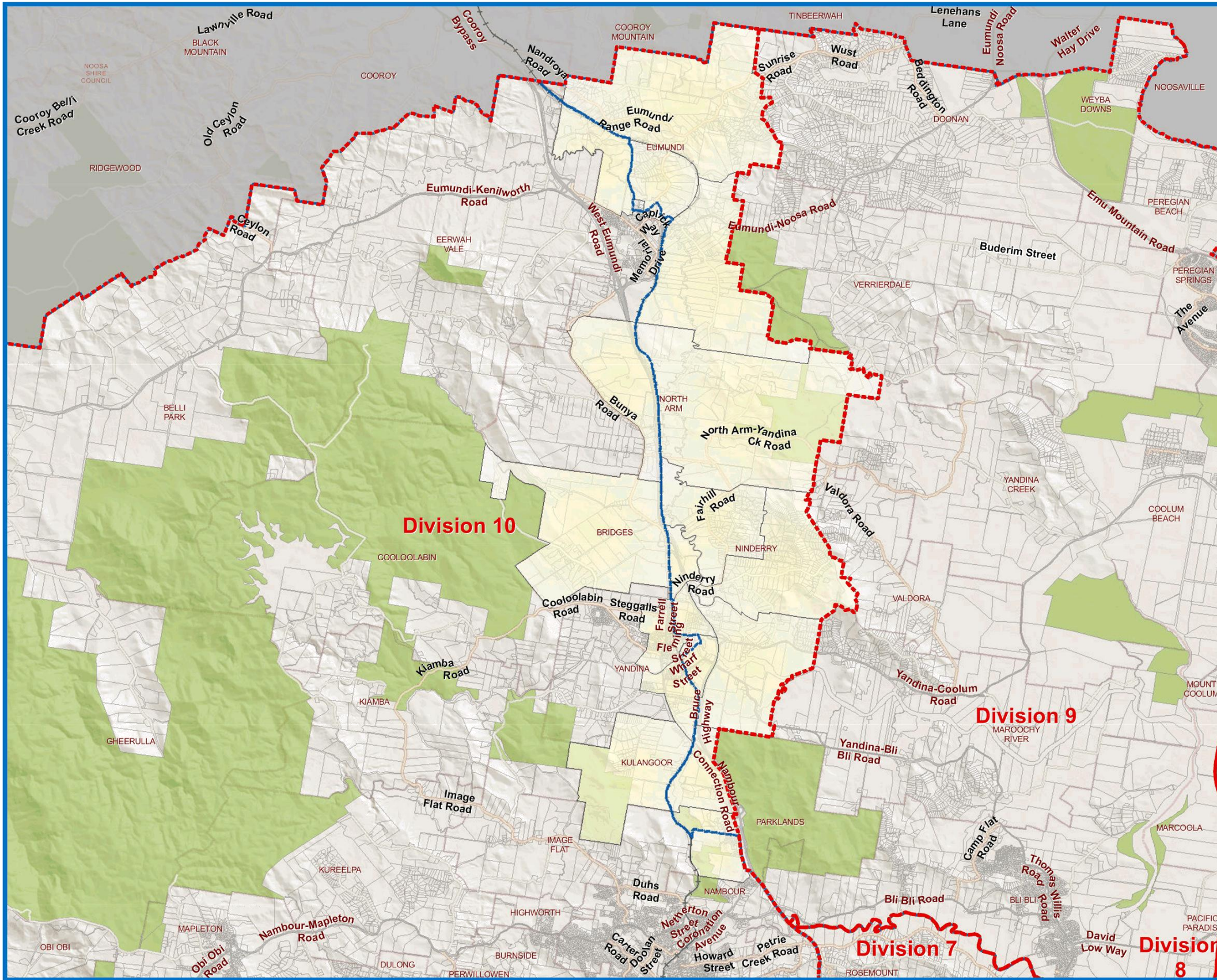
© Crown & Council Copyright Reserved.
 Geocentric Datum of Australia 1994 (GDA94)

Date: Wednesday, 18 February 2015

Created by: tc015

Path: W:\Common\GeolProjects\140173_Team_Leader_Councillor_Governance\Maps\2015_DivBdys_ChangeFocus_MAP1_20150217_TomC.mxd

2016 Election - Divisional Boundary Review



Sunshine Coast COUNCIL

**Map 2
 Proposed boundary change
 Division 9 and Division 10**

Legend

- Proposed Electoral Divisional Boundaries
- Highways and Motorways
- SA1 areas
- Current Electoral Divisional Boundaries
- Property Boundaries
- Railway Lines
- Protected Areas
- Localities

Scale: 1:58,620

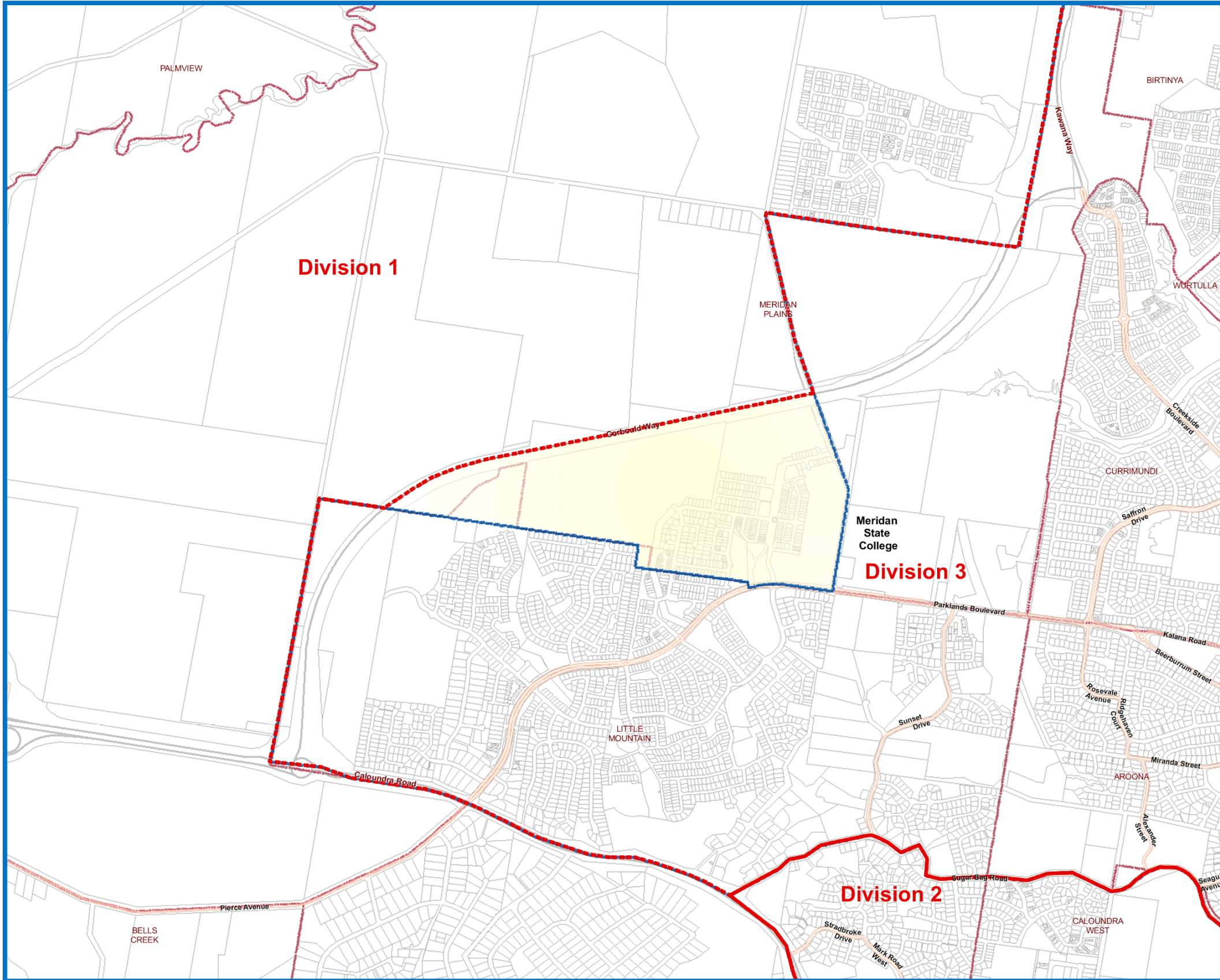
Sunshine Coast Council
 Locked Bag 72
 Sunshine Coast Mail Centre Qld 4560
 [e] mapping@sunshinecoast.qld.gov.au
 [w] www.maps.sunshinecoast.qld.gov.au
 [p] 07 5475 7272

Disclaimer
 While every care is taken to ensure the accuracy of this product, neither the Sunshine Coast Council nor the State of Queensland makes any representations or warranties about its accuracy, reliability, completeness or suitability for any particular purpose and disclaims all responsibility and all liability (including without limitation, liability in negligence) for all expenses, losses, damages (including indirect or consequential damage) and costs that may occur as a result of the product being inaccurate or incomplete in any way or for any reason.

© Crown & Council Copyright Reserved.
 Geocentric Datum of Australia 1994 (GDA94)
 Date: Wednesday, 18 February 2015 Created by: tc015

Path: W:\Common\Geol\Projects\140173_Team_Leader_Councillor_Governance\Maps\2015_DivBdys_ChangeFocus_MAP2_20150217_TomC.mxd

2016 Election - Divisional Boundary Review



Sunshine Coast COUNCIL

**Map 3
 Proposed boundary change
 Division 1 and Division 3**

Legend

- Proposed Electoral Divisional Boundaries
- Highways and Motorways
- SA1 areas
- Current Electoral Divisional Boundaries
- Property Boundaries
- Railway Lines
- Protected Areas
- Localities

Scale: 1:12,000

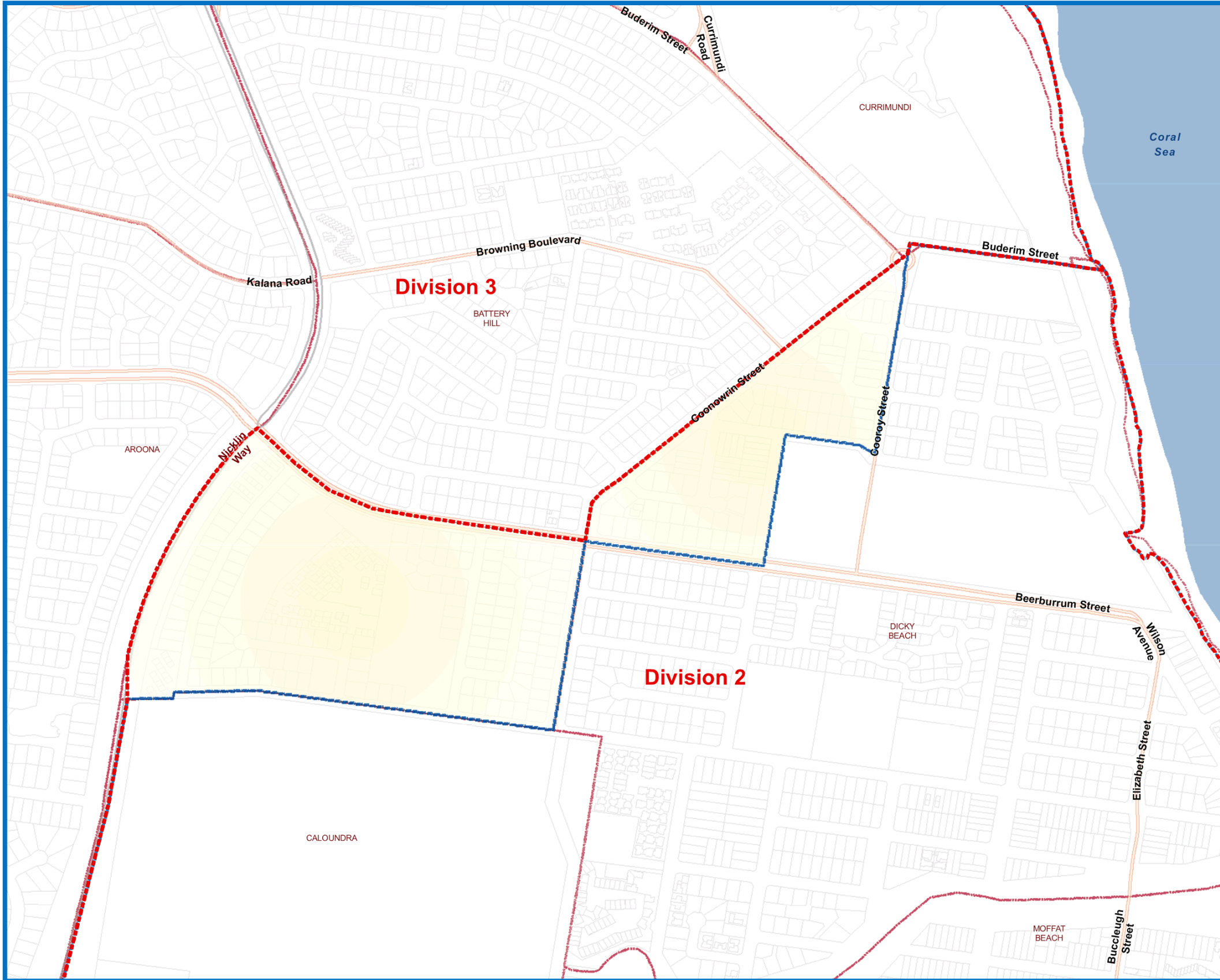
Sunshine Coast Council
 Locked Bag 72
 Sunshine Coast Mail Centre Qld 4560
 [e] mapping@sunshinecoast.qld.gov.au
 [w] www.maps.sunshinecoast.qld.gov.au
 [p] 07 5475 7272

Disclaimer
 While every care is taken to ensure the accuracy of this product, neither the Sunshine Coast Council nor the State of Queensland makes any representations or warranties about its accuracy, reliability, completeness or suitability for any particular purpose and disclaims all responsibility and all liability (including without limitation, liability in negligence) for all expenses, losses, damages (including indirect or consequential damage) and costs that may occur as a result of the product being inaccurate or incomplete in any way or for any reason.

© Crown & Council Copyright Reserved.
 Geocentric Datum of Australia 1994 (GDA94)
 Date: Wednesday, 18 February 2015 Created by: tc015

Path: W:\Common\GeolProjects\140173_Team_Leader_Councillor_Governance\Maps\2015_DivBdys_ChangeFocus_MAP3_20150217_TomC.mxd

2016 Election - Divisional Boundary Review



Sunshine Coast COUNCIL

Map 4
Proposed boundary change
Division 2 and Division 3

Legend

- Proposed Electoral Divisional Boundaries
- Highways and Motorways
- SA1 areas
- Current Electoral Divisional Boundaries
- Property Boundaries
- Railway Lines
- Protected Areas
- Localities

Scale: 1:4,390

Sunshine Coast Council
 Locked Bag 72
 Sunshine Coast Mail Centre Qld 4560
 [e] mapping@sunshinecoast.qld.gov.au
 [w] www.maps.sunshinecoast.qld.gov.au
 [p] 07 5475 7272

Disclaimer
 While every care is taken to ensure the accuracy of this product, neither the Sunshine Coast Council nor the State of Queensland makes any representations or warranties about its accuracy, reliability, completeness or suitability for any particular purpose and disclaims all responsibility and all liability (including without limitation, liability in negligence) for all expenses, losses, damages (including indirect or consequential damage) and costs that may occur as a result of the product being inaccurate or incomplete in any way or for any reason.

© Crown & Council Copyright Reserved.
 Geocentric Datum of Australia 1994 (GDA94)

Date: Wednesday, 18 February 2015 Created by: tc015

Path: W:\Common\GeolProjects\140173_Team_Leader_Councillor_Governance\Maps\2015_DivBdys_ChangeFocus_MAP4_20150217_TomC.mxd