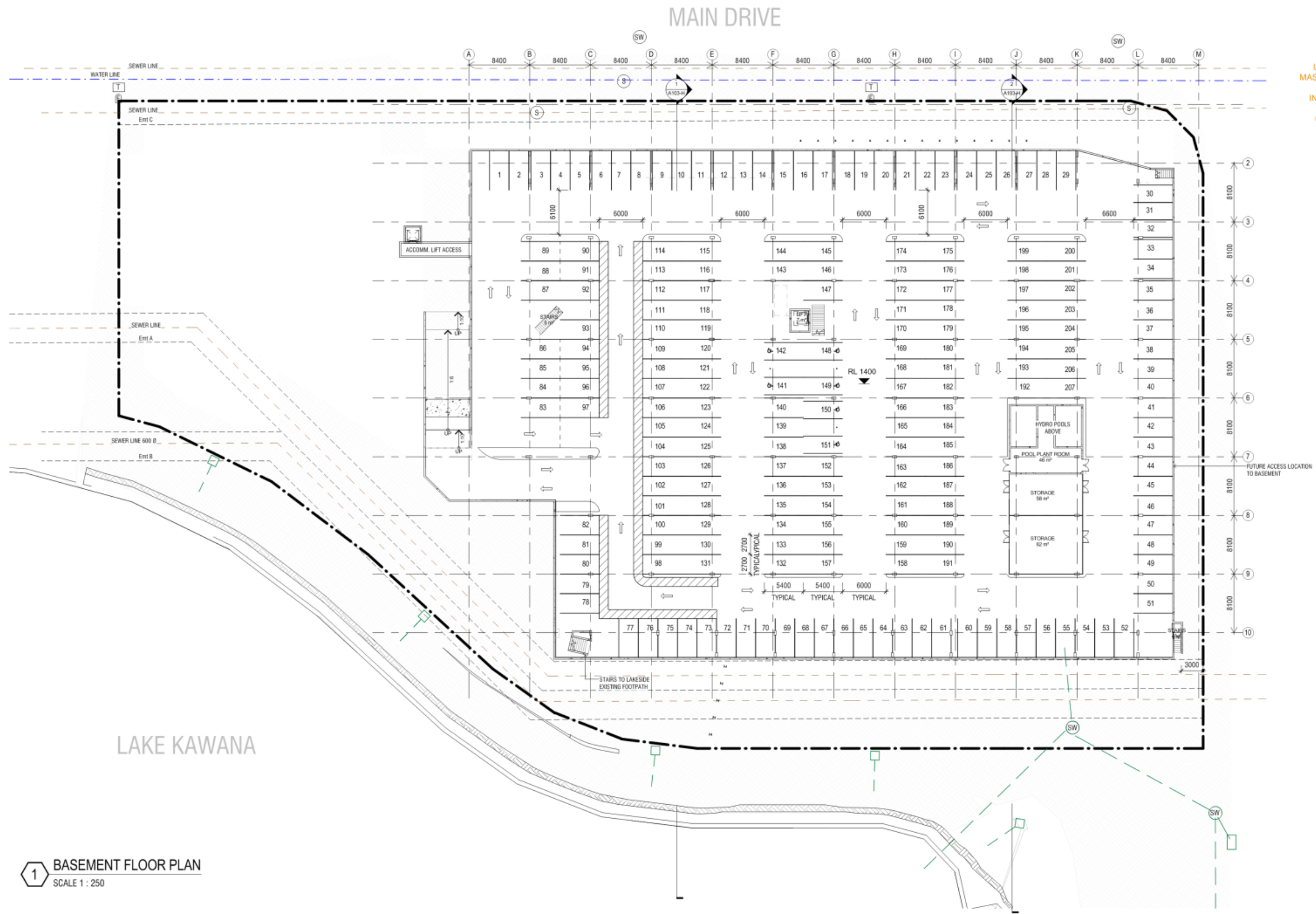




URBAN DESIGN
 MASTER PLANNING
 ARCHITECTURE
 INTERIOR DESIGN
 LANDSCAPE
 GRAPHIC DESIGN

BRISBANE
 SYDNEY
 MELBOURNE
 PERTH
 DARWIN
 CAIRNS
 GOLD COAST
 SUNSHINE COAST
 AUCKLAND



1 BASEMENT FLOOR PLAN
 SCALE 1 : 250

SUNSHINE COAST COMMUNITY & SPORTING CLUB LIMITED
HIGH PERFORMANCE SPORTS AND COMMUNITY HUB - MAIN DRIVE BIRTINYA
 BASEMENT FLOOR PLAN

These designs and plans are the copyright of Mode Design Corp. Pty Ltd and cannot be reproduced without written permission

Sunshine Coast

PROJECT No: 14599SSC
 DATE: 18.5.16
 SCALE: 1 : 250 @ A1
 DRAWING No: MP-A004-H

Suite 2, 9 Capital Place, Birtinya, QLD 4575
 Tel +61 7 5437 8574 Fax +61 7 5493 2716
 sunshinecoast@modedesign.com.au

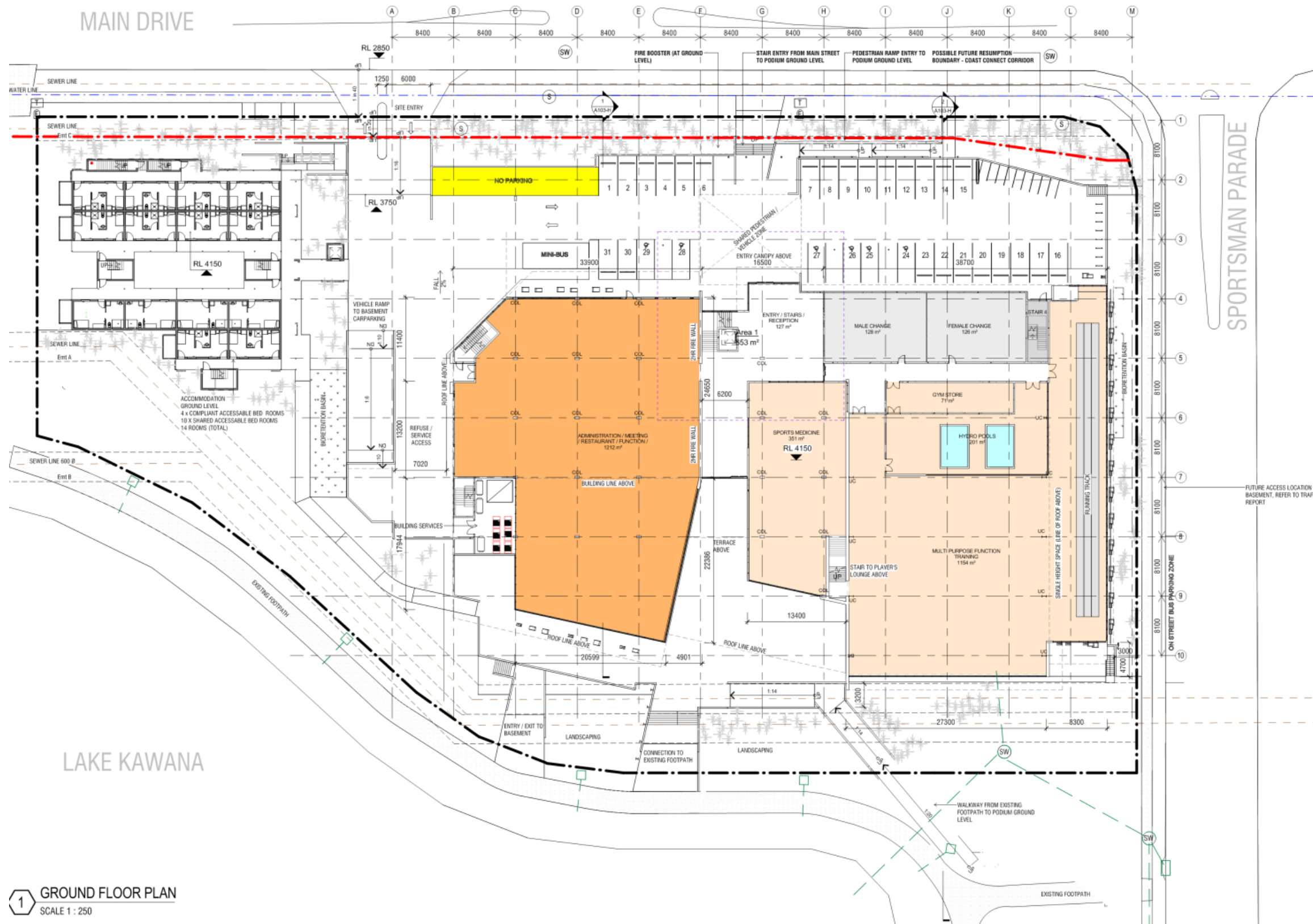
Brisbane Sydney Melbourne Darwin Perth Sunshine Coast Gold Coast Auckland

www.modedesign.com.au



URBAN DESIGN
 MASTER PLANNING
 ARCHITECTURE
 INTERIOR DESIGN
 LANDSCAPE
 GRAPHIC DESIGN

BRISBANE
 SYDNEY
 MELBOURNE
 PERTH
 DARWIN
 CAIRNS
 GOLD COAST
 SUNSHINE COAST
 AUCKLAND



1 GROUND FLOOR PLAN
 SCALE 1 : 250

SUNSHINE COAST COMMUNITY & SPORTING CLUB LIMITED
HIGH PERFORMANCE SPORTS AND COMMUNITY HUB - MAIN DRIVE BIRTINYA
 GROUND FLOOR PLAN

These designs and plans are the copyright of Mode Design Corp. Pty Ltd and cannot be reproduced without written permission

Sunshine Coast

PROJECT No: 14599SSC
 DATE: 18.5.16
 SCALE: 1 : 250@ A1
 DRAWING No: MP-A002-H

Suite 2, 9 Capital Place, Birtinya, QLD 4575
 Tel +61 7 5437 8574 Fax +61 7 5493 2716
 sunshinecoast@modedesign.com.au

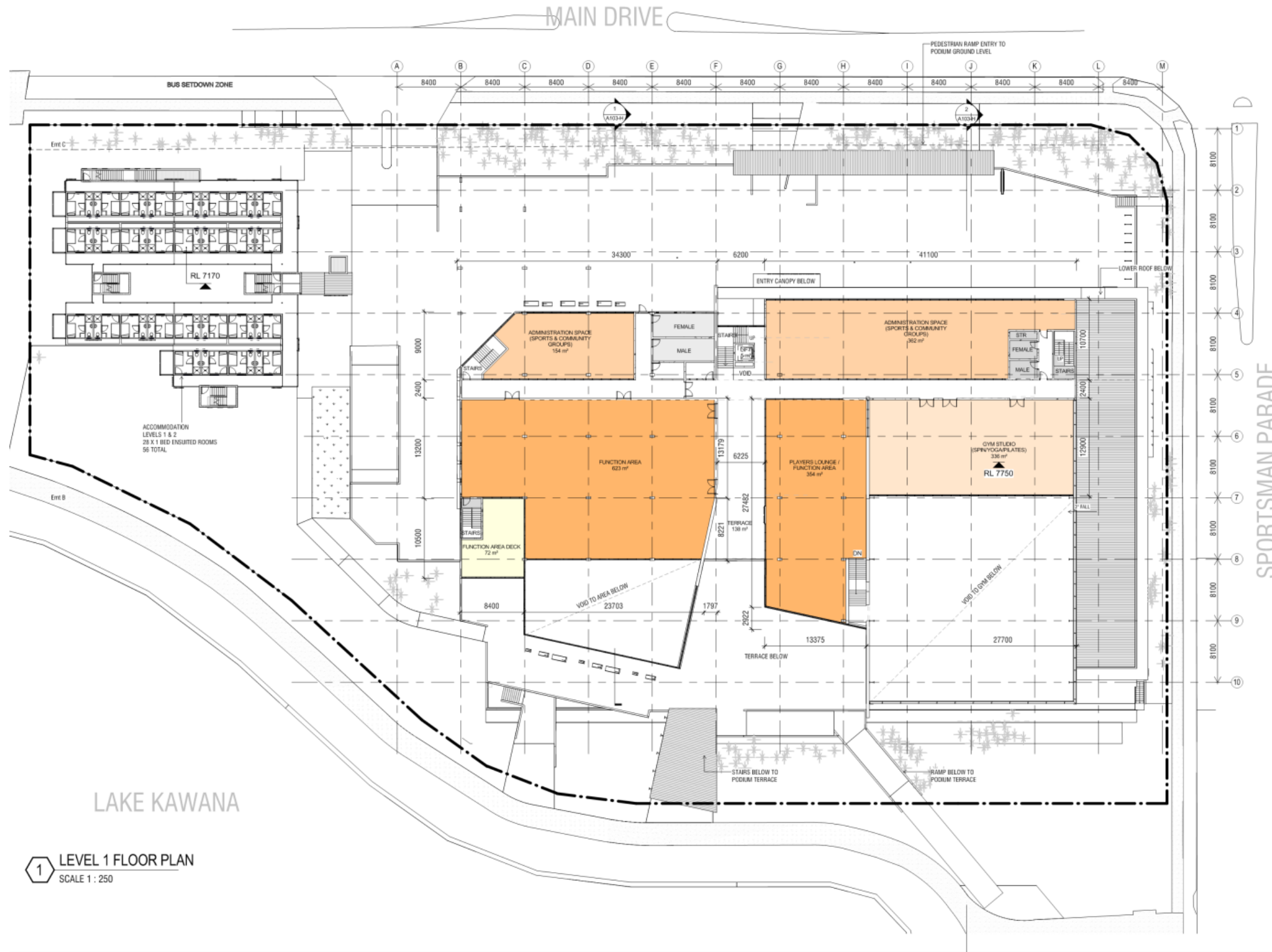
Brisbane Sydney Melbourne Darwin Perth Sunshine Coast Gold Coast Auckland

www.modedesign.com.au



URBAN DESIGN
 MASTER PLANNING
 ARCHITECTURE
 INTERIOR DESIGN
 LANDSCAPE
 GRAPHIC DESIGN

BRISBANE
 SYDNEY
 MELBOURNE
 PERTH
 DARWIN
 CAIRNS
 GOLD COAST
 SUNSHINE COAST
 AUCKLAND



1 LEVEL 1 FLOOR PLAN
 SCALE 1 : 250



SUNSHINE COAST COMMUNITY & SPORTING CLUB LIMITED
HIGH PERFORMANCE SPORTS AND COMMUNITY HUB - MAIN DRIVE BIRTINYA
 LEVEL 1 FLOOR PLAN

These designs and plans are the copyright of Mode Design Corp. Pty Ltd and cannot be reproduced without written permission

Sunshine Coast

PROJECT No: 14599SSC
 DATE: 18.5.16
 SCALE: 1 : 250@ A1
 DRAWING No: MP-A003-H

Suite 2, 9 Capital Place, Birtinya, QLD 4575
 Tel +61 7 5437 8574 Fax +61 7 5493 2716
 sunshinecoast@modedesign.com.au

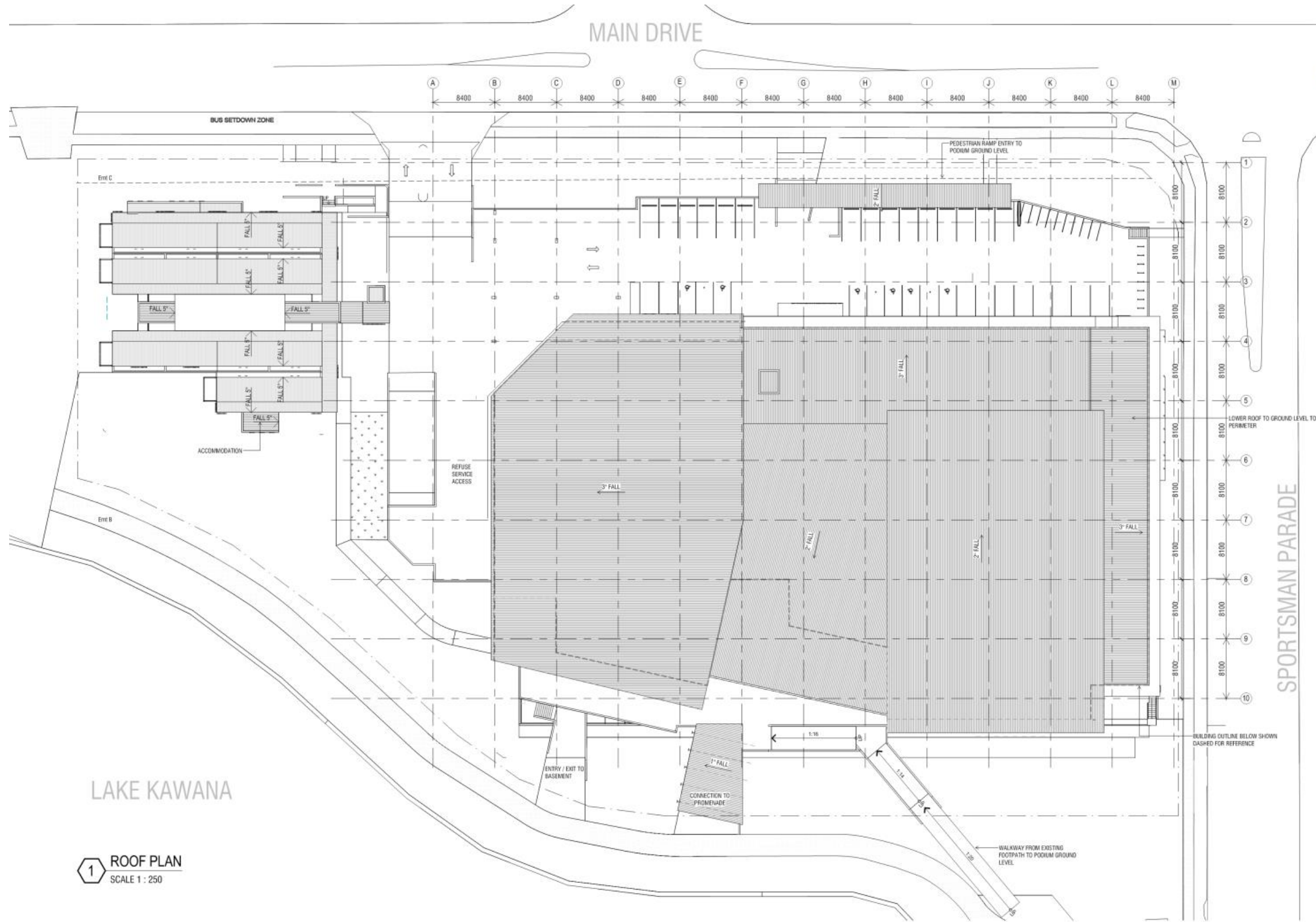
Brisbane Sydney Melbourne Darwin Perth Sunshine Coast Gold Coast Auckland

www.modedesign.com.au



URBAN DESIGN
 MASTER PLANNING
 ARCHITECTURE
 INTERIOR DESIGN
 LANDSCAPE
 GRAPHIC DESIGN

BRISBANE
 SYDNEY
 MELBOURNE
 PERTH
 DARWIN
 CAIRNS
 GOLD COAST
 SUNSHINE COAST
 AUCKLAND



1 ROOF PLAN
 SCALE 1 : 250

SUNSHINE COAST COMMUNITY & SPORTING CLUB LIMITED
HIGH PERFORMANCE SPORTS AND COMMUNITY HUB - MAIN DRIVE BIRTINYA
 ROOF PLAN

These designs and plans are the copyright of Mode Design Corp. Pty Ltd and cannot be reproduced without written permission.

Sunshine Coast

PROJECT No: 14599SSC
 DATE: 18.5.16
 SCALE: 1 : 250@ A1
 DRAWING No: MP-A006-H

Suite 2, 9 Capital Place, Birtinya, QLD 4575
 Tel +61 7 5437 8574 Fax +61 7 5493 2716
 sunshinecoast@modedesign.com.au

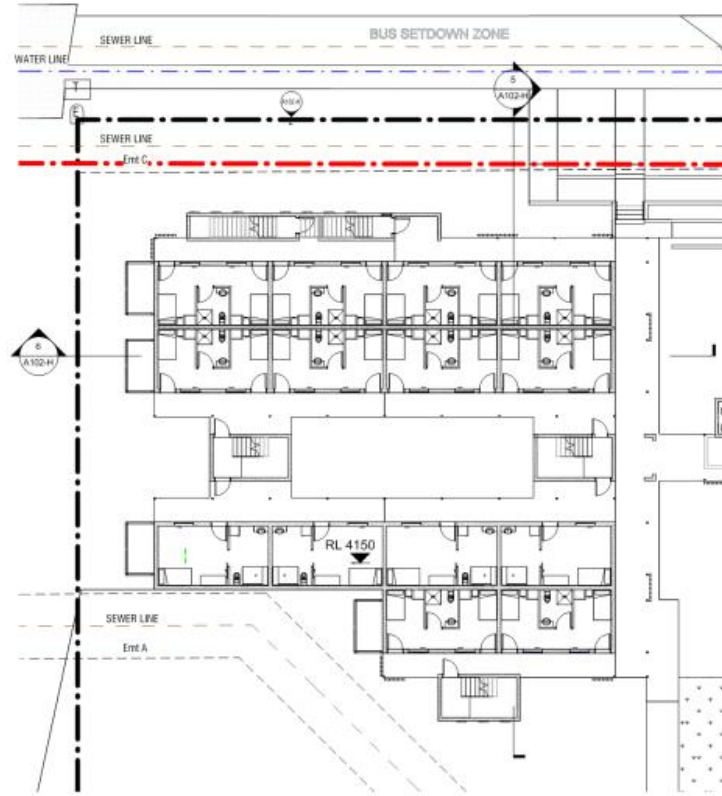
Brisbane Sydney Melbourne Darwin Perth Sunshine Coast Gold Coast Auckland

www.modedesign.com.au



URBAN DESIGN
 MASTER PLANNING
 ARCHITECTURE
 INTERIOR DESIGN
 LANDSCAPE
 GRAPHIC DESIGN

BRISBANE
 SYDNEY
 MELBOURNE
 PERTH
 DARWIN
 CAIRNS
 GOLD COAST
 SUNSHINE COAST
 AUCKLAND



④ ACCOMMODATION GROUND FLOOR PLAN
 SCALE 1 : 200



② ACCOMMODATION LEVEL 1 FLOOR PLAN
 SCALE 1 : 200



③ ACCOMMODATION LEVEL 2 FLOOR PLAN
 SCALE 1 : 200

SUNSHINE COAST COMMUNITY & SPORTING CLUB LIMITED
HIGH PERFORMANCE SPORTS AND COMMUNITY HUB - MAIN DRIVE BIRTINYA
 ACCOMMODATION FLOOR PLANS

These designs and plans are the copyright of Mode Design Corp. Pty Ltd and cannot be reproduced without written permission.

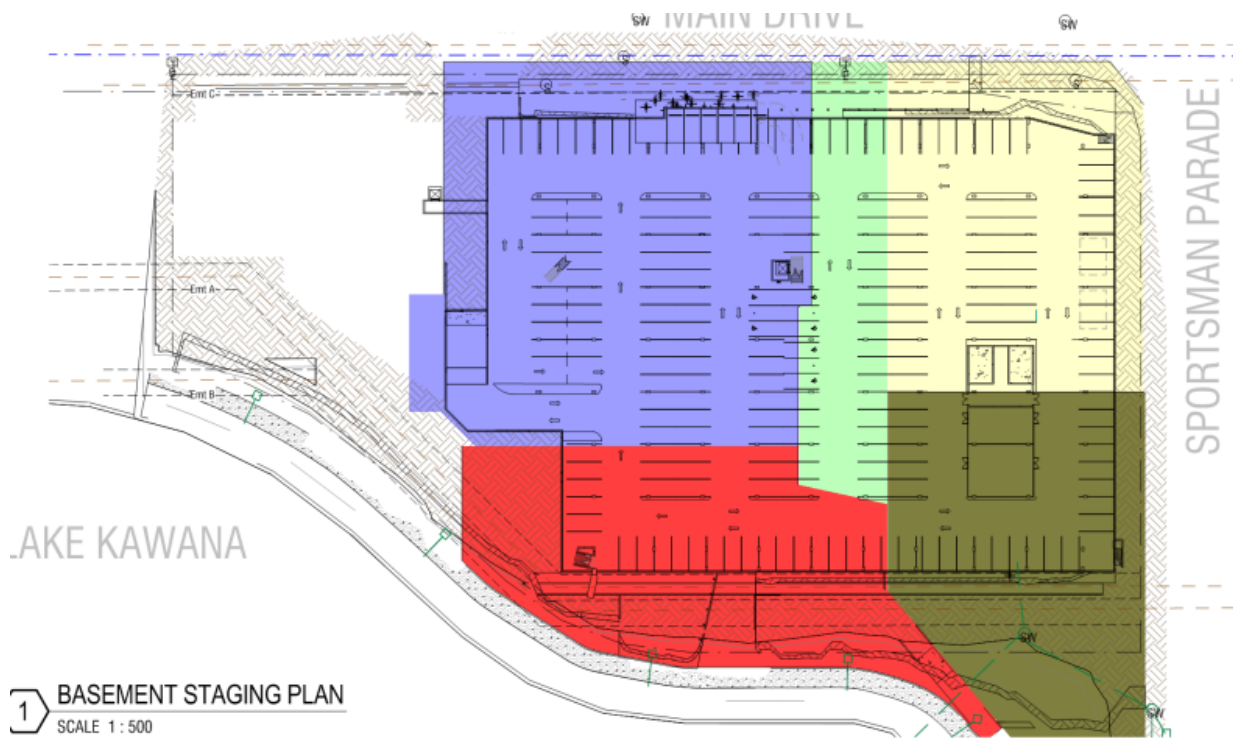
Sunshine Coast

PROJECT No: 14599SSC
 DATE: 18.5.16
 SCALE: 1 : 200@ A1
 DRAWING No: A005-H

Suite 2, 9 Capital Place, Birtinya, QLD 4575
 Tel +61 7 5437 8574 Fax +61 7 5493 2716
 sunshinecoast@modedesign.com.au

Brisbane Sydney Melbourne Darwin Perth Sunshine Coast Gold Coast Auckland

www.modedesign.com.au



STAGING LEGEND

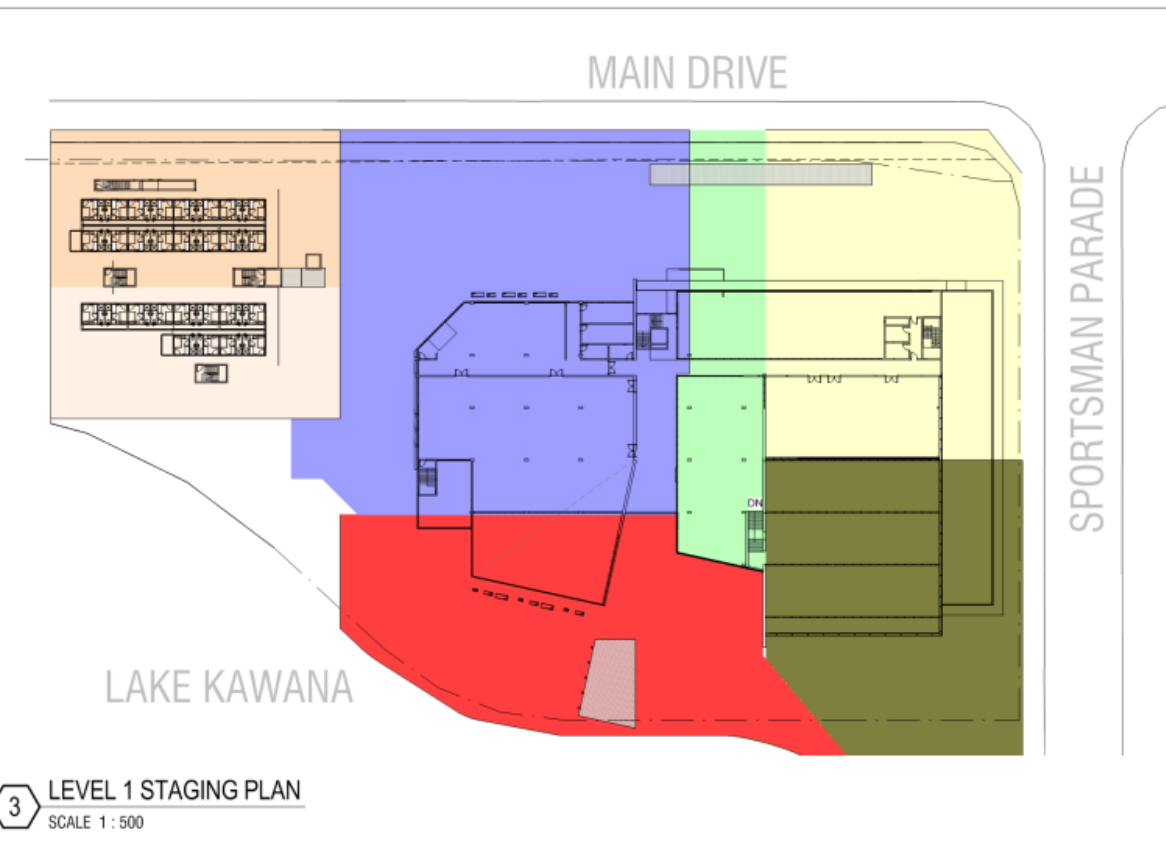
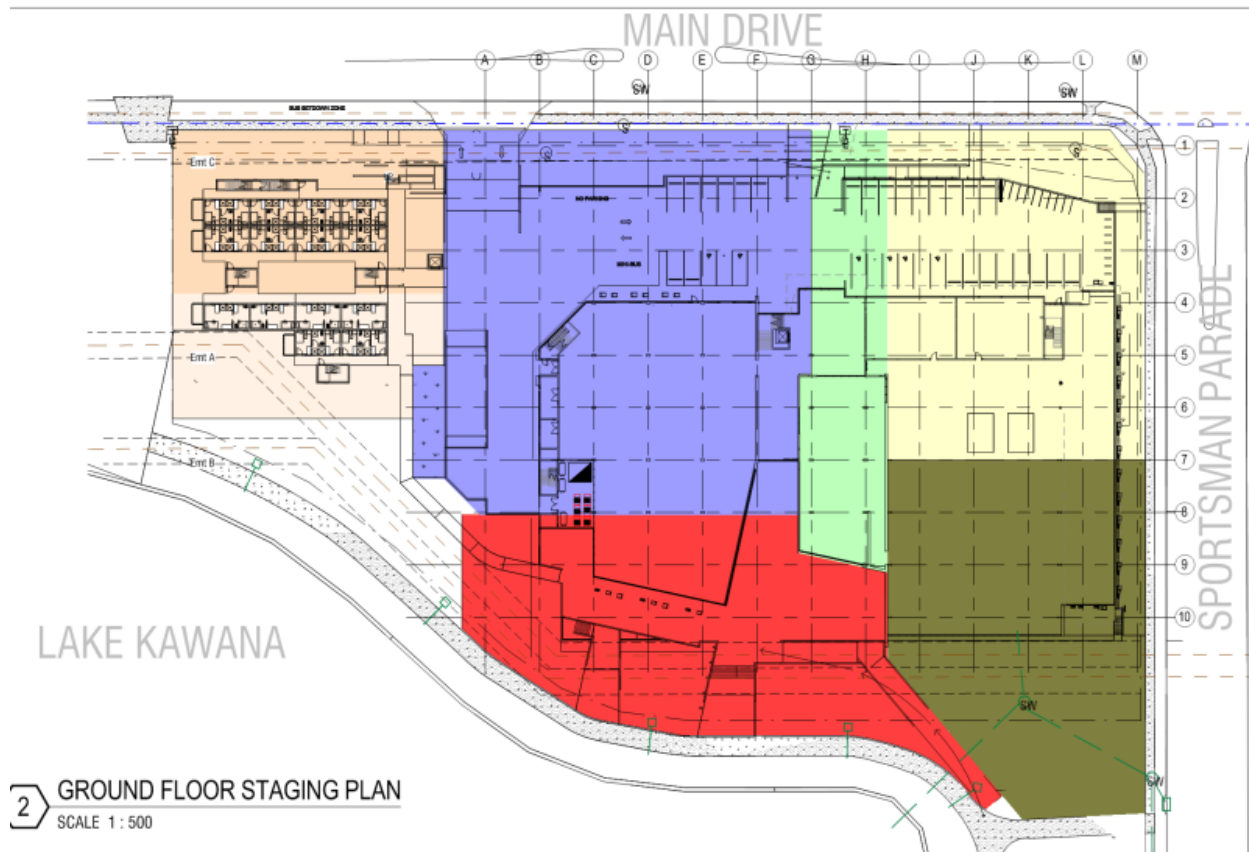
- STAGE 1
- STAGE 2
- STAGE 3
- STAGE 4 PART A
- STAGE 4 PART B
- STAGE 5 PART A
- STAGE 5 PART B

NOTE:
 STAGES 2 - 5 WILL NOT NECESSARY BE
 DELIVERED IN SEQUENTIAL ORDER



URBAN DESIGN
 MASTER PLANNING
 ARCHITECTURE
 INTERIOR DESIGN
 LANDSCAPE
 GRAPHIC DESIGN

BRISBANE
 SYDNEY
 MELBOURNE
 PERTH
 DARWIN
 CAIRNS
 GOLD COAST
 SUNSHINE COAST
 AUCKLAND



SUNSHINE COAST COMMUNITY & SPORTING CLUB LIMITED
HIGH PERFORMANCE SPORTS AND COMMUNITY HUB - MAIN DRIVE BIRTINYA
 CONSTRUCTION STAGING PLAN

These designs and plans are the copyright of Mode Design Corp. Pty Ltd and cannot be reproduced without written permission

Sunshine Coast

PROJECT No: 14599SSC
 DATE: 18.5.16
 SCALE: As indicated @ A1
 DRAWING No: MP-A008-H

Suite 2, 9 Capital Place, Birtinya, QLD 4575
 Tel +61 7 5437 8574 Fax +61 7 5493 2716
 sunshinecoast@modedesign.com.au

Brisbane Sydney Melbourne Darwin Perth Sunshine Coast Gold Coast Auckland

www.modedesign.com.au

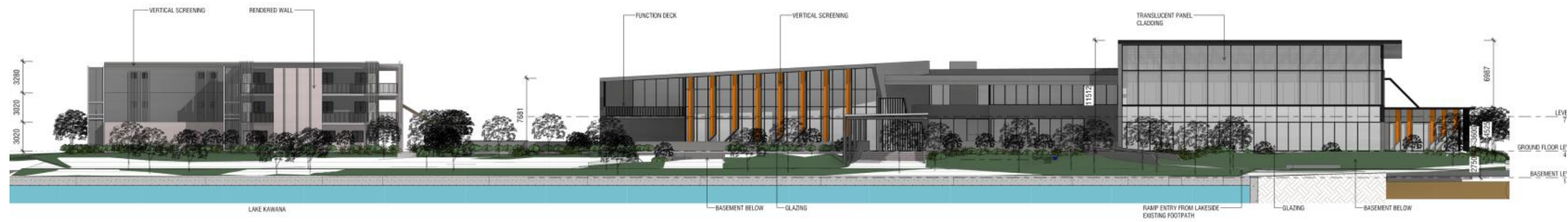


URBAN DESIGN
 MASTER PLANNING
 ARCHITECTURE
 INTERIOR DESIGN
 LANDSCAPE
 GRAPHIC DESIGN

BRISBANE
 SYDNEY
 MELBOURNE
 PERTH
 DARWIN
 CAIRNS
 GOLD COAST
 SUNSHINE COAST
 AUCKLAND



1 NORTH ELEVATION
 SCALE 1 : 200



2 SOUTH ELEVATION
 SCALE 1 : 200

SUNSHINE COAST COMMUNITY & SPORTING CLUB LIMITED
HIGH PERFORMANCE SPORTS AND COMMUNITY HUB - MAIN DRIVE BIRTINYA
 ELEVATIONS - SHEET 1

Sunshine Coast

PROJECT No: 14599SSC
 DATE: 18.5.16
 SCALE: 1 : 200@ A1
 DRAWING No: MP-A100-H

Suite 2, 9 Capital Place, Birtinya, QLD 4575
 Tel +61 7 5437 8574 Fax +61 7 5493 2716
 sunshinecoast@modedesign.com.au

These designs and plans are the copyright of Mode Design Corp. Pty Ltd and cannot be reproduced without written permission.

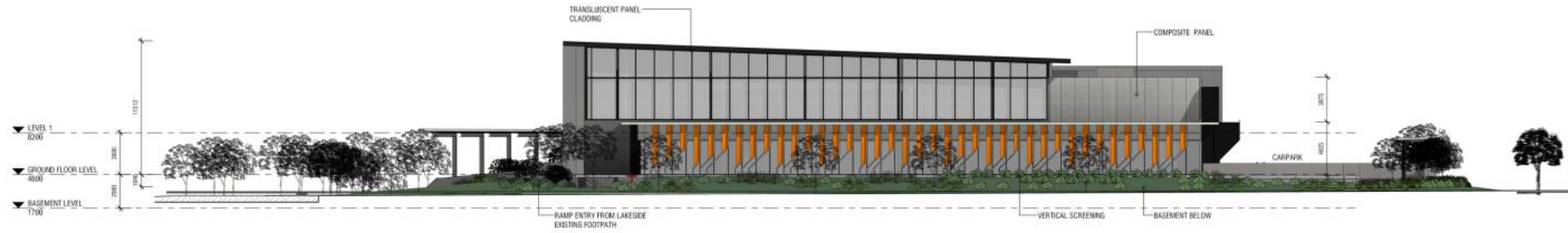
Brisbane Sydney Melbourne Darwin Perth Sunshine Coast Gold Coast Auckland

www.modedesign.com.au

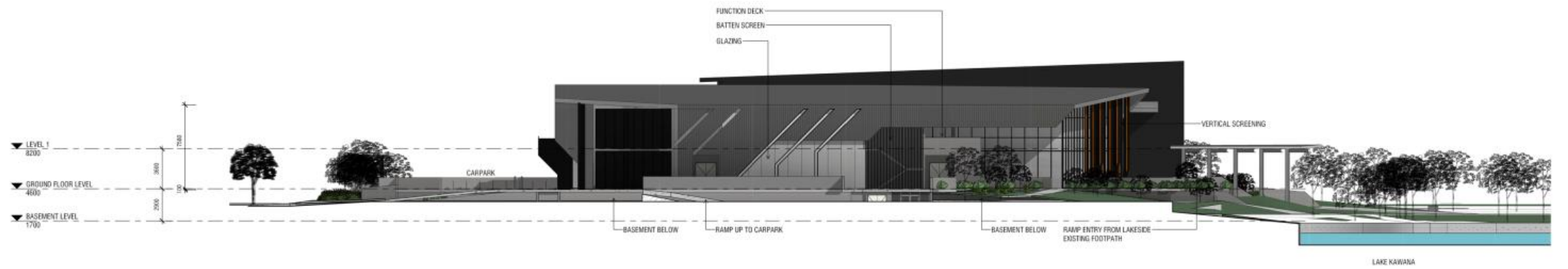


URBAN DESIGN
 MASTER PLANNING
 ARCHITECTURE
 INTERIOR DESIGN
 LANDSCAPE
 GRAPHIC DESIGN

BRISBANE
 SYDNEY
 MELBOURNE
 PERTH
 DARWIN
 CAIRNS
 GOLD COAST
 SUNSHINE COAST
 AUCKLAND



① EAST ELEVATION
 SCALE 1 : 200



② WEST ELEVATION
 SCALE 1 : 200

SUNSHINE COAST COMMUNITY & SPORTING CLUB LIMITED
HIGH PERFORMANCE SPORTS AND COMMUNITY HUB - MAIN DRIVE BIRTINYA
 ELEVATIONS - SHEET 2

Sunshine Coast

PROJECT No: 14599SSC
 DATE: 18.5.16
 SCALE: 1 : 200@ A1
 DRAWING No: MP-A101-H

Suite 2, 9 Capital Place, Birtinya, QLD 4575
 Tel +61 7 5437 8574 Fax +61 7 5493 2716
 sunshinecoast@modedesign.com.au

Brisbane Sydney Melbourne Darwin Perth Sunshine Coast Gold Coast Auckland

These designs and plans are the copyright of Mode Design Corp. Pty Ltd and cannot be reproduced without written permission.



URBAN DESIGN
 MASTER PLANNING
 ARCHITECTURE
 INTERIOR DESIGN
 LANDSCAPE
 GRAPHIC DESIGN

BRISBANE
 SYDNEY
 MELBOURNE
 PERTH
 DARWIN
 CAIRNS
 GOLD COAST
 SUNSHINE COAST
 AUCKLAND



1 ACCOMMODATION EAST ELEVATION
 SCALE 1 : 200



4 ACCOMMODATION WEST ELEVATION
 SCALE 1 : 200



2 ACCOMMODATION NORTH ELEVATION
 SCALE 1 : 200



3 ACCOMMODATION SOUTH ELEVATION
 SCALE 1 : 200



5 ACCOMMODATION NORTH SOUTH SECTION
 SCALE 1 : 200



6 ACCOMMODATION EAST WEST SECTION
 SCALE 1 : 200

SUNSHINE COAST COMMUNITY & SPORTING CLUB LIMITED
HIGH PERFORMANCE SPORTS AND COMMUNITY HUB - MAIN DRIVE BIRTINYA
 ELEVATIONS - SHEET 3

These designs and plans are the copyright of Mode Design Corp. Pty Ltd and cannot be reproduced without written permission.

Sunshine Coast

PROJECT No: 14599SSC
 DATE: 18.5.16
 SCALE: 1 : 200@ A1
 DRAWING No: A102-H

Suite 2, 9 Capital Place, Birtinya, QLD 4575
 Tel +61 7 5437 8574 Fax +61 7 5493 2716
 sunshinecoast@modedesign.com.au

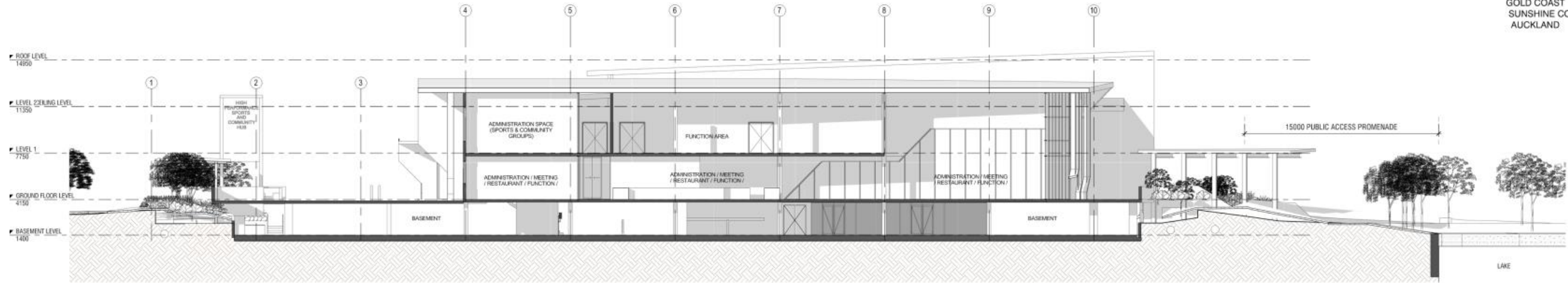
Brisbane Sydney Melbourne Darwin Perth Sunshine Coast Gold Coast Auckland

www.modedesign.com.au

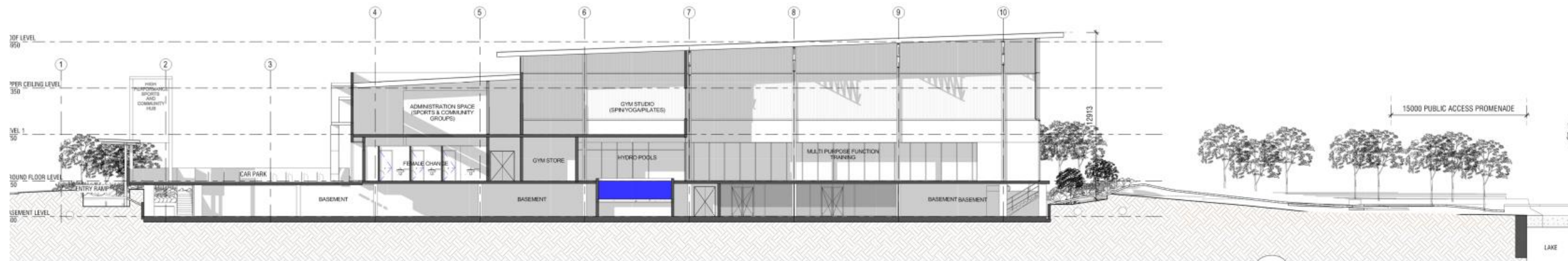


URBAN DESIGN
 MASTER PLANNING
 ARCHITECTURE
 INTERIOR DESIGN
 LANDSCAPE
 GRAPHIC DESIGN

BRISBANE
 SYDNEY
 MELBOURNE
 PERTH
 DARWIN
 CAIRNS
 GOLD COAST
 SUNSHINE COAST
 AUCKLAND



1 SECTION
 SCALE 1 : 150



2 SECTION
 SCALE 1 : 150

SUNSHINE COAST COMMUNITY & SPORTING CLUB LIMITED
HIGH PERFORMANCE SPORTS AND COMMUNITY HUB - MAIN DRIVE BIRTINYA
 SECTIONS

Sunshine Coast

PROJECT No: 14599SSC
 DATE: 18.5.16
 SCALE: 1 : 150 @ A1
 DRAWING No: MP-A103-H

Suite 2, 9 Capital Place, Birtinya, QLD 4575
 Tel +61 7 5437 8574 Fax +61 7 5493 2716
 sunshinecoast@modedesign.com.au

These designs and plans are the copyright of Mode Design Corp. Pty Ltd and cannot be reproduced without written permission.

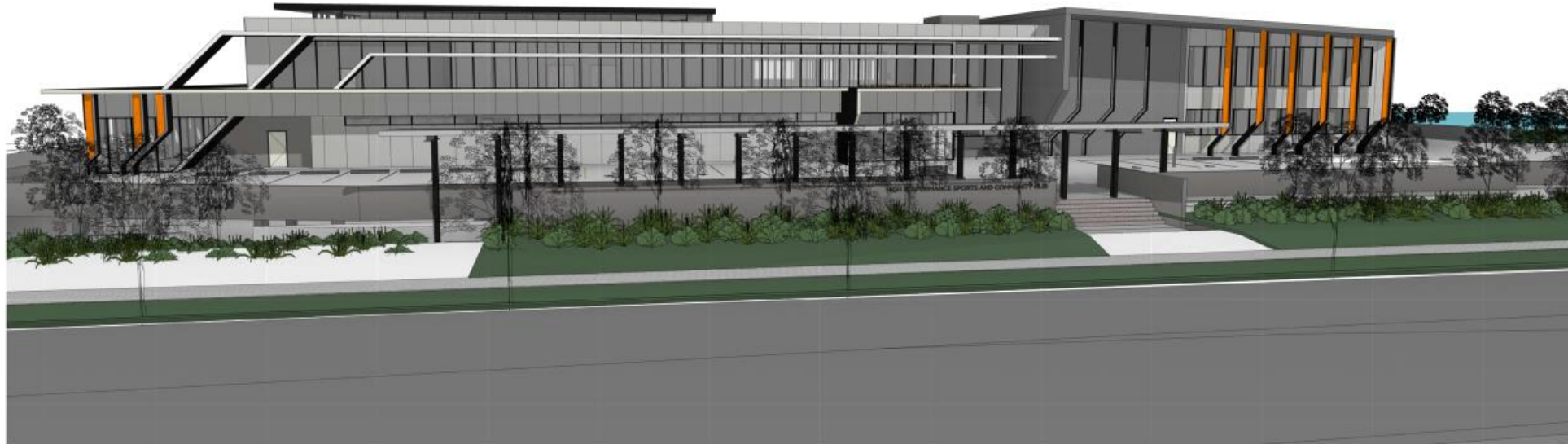
Brisbane Sydney Melbourne Darwin Perth Sunshine Coast Gold Coast Auckland

www.modedesign.com.au



URBAN DESIGN
 MASTER PLANNING
 ARCHITECTURE
 INTERIOR DESIGN
 LANDSCAPE
 GRAPHIC DESIGN

BRISBANE
 SYDNEY
 MELBOURNE
 PERTH
 DARWIN
 CAIRNS
 GOLD COAST
 SUNSHINE COAST
 AUCKLAND



1 MAIN ROAD PERSPECTIVE
 SCALE



2 CORNER OF MAIN DRIVE AND SPORTSMAN PARADE PERSPECTIVE
 SCALE

SUNSHINE COAST COMMUNITY & SPORTING CLUB LIMITED
HIGH PERFORMANCE SPORTS AND COMMUNITY HUB - MAIN DRIVE BIRTINYA
 PERSPECTIVES - SHEET 1

These designs and plans are the copyright of Mode Design Corp. Pty Ltd and cannot be reproduced without written permission.

Sunshine Coast

PROJECT No: 14599SSC
 DATE: 18.5.16
 SCALE: @ A1
 DRAWING No: MP-A800-H

Suite 2, 9 Capital Place, Birtinya, QLD 4575
 Tel +61 7 5437 8574 Fax +61 7 5493 2716
 sunshinecoast@modedesign.com.au

Brisbane Sydney Melbourne Darwin Perth Sunshine Coast Gold Coast Auckland

www.modedesign.com.au



URBAN DESIGN
 MASTER PLANNING
 ARCHITECTURE
 INTERIOR DESIGN
 LANDSCAPE
 GRAPHIC DESIGN

BRISBANE
 SYDNEY
 MELBOURNE
 PERTH
 DARWIN
 CAIRNS
 GOLD COAST
 SUNSHINE COAST
 AUCKLAND



① LAKESIDE PERSPECTIVE
 SCALE



② SPORTSMAN PARADE PERSPECTIVE
 SCALE

SUNSHINE COAST COMMUNITY & SPORTING CLUB LIMITED
HIGH PERFORMANCE SPORTS AND COMMUNITY HUB - MAIN DRIVE BIRTINYA
 PERSPECTIVES - SHEET 2

These designs and plans are the copyright of Mode Design Corp. Pty Ltd and cannot be reproduced without written permission.

Sunshine Coast

PROJECT No: 14599SSC
 DATE: 18.5.16
 SCALE: @ A1
 DRAWING No: MP-AB01-H

Suite 2, 9 Capital Place, Birtinya, QLD 4575
 Tel +61 7 5437 8574 Fax +61 7 5493 2716
 sunshinecoast@modedesign.com.au

Brisbane Sydney Melbourne Darwin Perth Sunshine Coast Gold Coast Auckland

www.modedesign.com.au

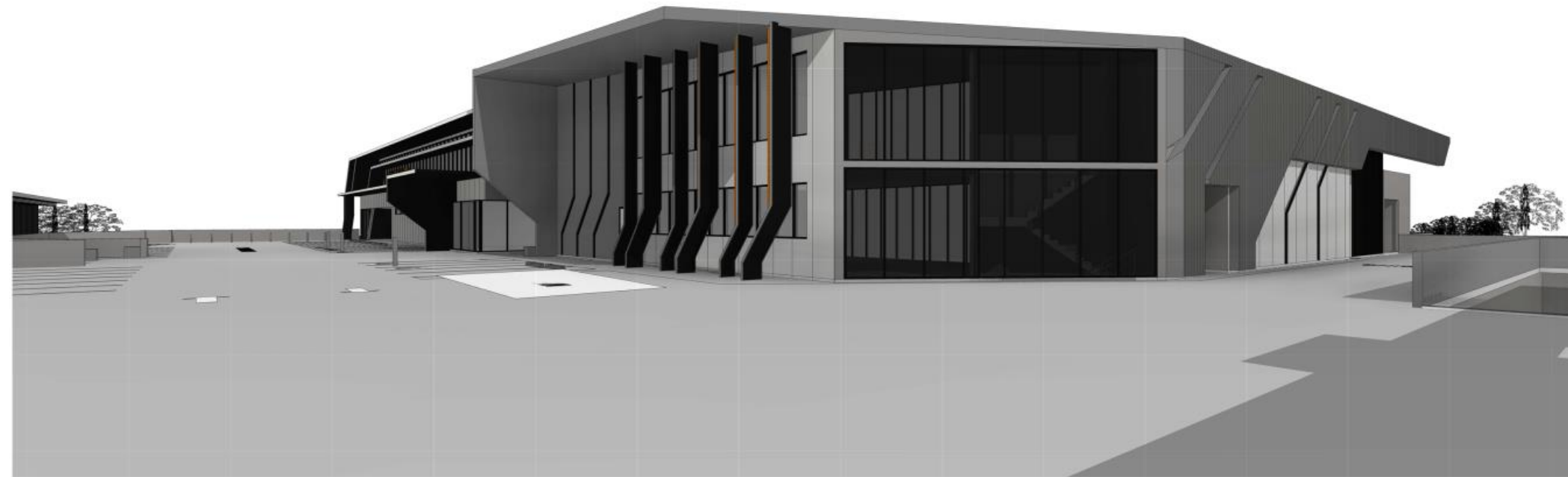


1 SOUTH - WEST PERSPECTIVE
 SCALE



URBAN DESIGN
 MASTER PLANNING
 ARCHITECTURE
 INTERIOR DESIGN
 LANDSCAPE
 GRAPHIC DESIGN

BRISBANE
 SYDNEY
 MELBOURNE
 PERTH
 DARWIN
 CAIRNS
 GOLD COAST
 SUNSHINE COAST
 AUCKLAND



2 NORTH - WEST PERSPECTIVE
 SCALE

SUNSHINE COAST COMMUNITY & SPORTING CLUB LIMITED
HIGH PERFORMANCE SPORTS AND COMMUNITY HUB - MAIN DRIVE BIRTINYA
 PERSPECTIVES - SHEET 3

These designs and plans are the copyright of Mode Design Corp. Pty Ltd and cannot be reproduced without written permission.

Sunshine Coast

PROJECT No: 14599SSC
 DATE: 18.5.16
 SCALE: @ A1
 DRAWING No: A802-H

Suite 2, 9 Capital Place, Birtinya, QLD 4575
 Tel +61 7 5437 8574 Fax +61 7 5493 2716
 sunshinecoast@modedesign.com.au

Brisbane Sydney Melbourne Darwin Perth Sunshine Coast Gold Coast Auckland

www.modedesign.com.au



2 COMMUNITY HUB ENTRY PERSPECTIVE
 SCALE



3 COMMUNITY HUB NORTH EAST PERSPECTIVE
 SCALE

URBAN DESIGN
 MASTER PLANNING
 ARCHITECTURE
 INTERIOR DESIGN
 LANDSCAPE
 GRAPHIC DESIGN

BRISBANE
 SYDNEY
 MELBOURNE
 PERTH
 DARWIN
 CAIRNS
 GOLD COAST
 SUNSHINE COAST
 AUCKLAND



1 ACCOMMODATION NORTH WEST PERSPECTIVE
 SCALE



4 COMMUNITY HUB SOUTH EAST PERSPECTIVE
 SCALE

SUNSHINE COAST COMMUNITY & SPORTING CLUB LIMITED
HIGH PERFORMANCE SPORTS AND COMMUNITY HUB - MAIN DRIVE BIRTINYA
 PERSPECTIVES - SHEET 4

These designs and plans are the copyright of Mode Design Corp. Pty Ltd and cannot be reproduced without written permission.

Sunshine Coast

PROJECT No: 14599SSC
 DATE: 18.5.16
 SCALE: @ A1
 DRAWING No: A803-H

Suite 2, 9 Capital Place, Birtinya, QLD 4575
 Tel +61 7 5437 8574 Fax +61 7 5493 2716
 sunshinecoast@modedesign.com.au

Brisbane Sydney Melbourne Darwin Perth Sunshine Coast Gold Coast Auckland

www.modedesign.com.au



URBAN DESIGN
 MASTER PLANNING
 ARCHITECTURE
 INTERIOR DESIGN
 LANDSCAPE
 GRAPHIC DESIGN

BRISBANE
 SYDNEY
 MELBOURNE
 PERTH
 DARWIN
 CAIRNS
 GOLD COAST
 SUNSHINE COAST
 AUCKLAND



1 ACCOMMODATION SOUTH WEST PERSPECTIVE
 SCALE



2 ACCOMMODATION NORTH WEST PERSPECTIVE.
 SCALE

SUNSHINE COAST COMMUNITY & SPORTING CLUB LIMITED
HIGH PERFORMANCE SPORTS AND COMMUNITY HUB - MAIN DRIVE BIRTINYA
 PERSPECTIVES - SHEET 5

These designs and plans are the copyright of Mode Design Corp. Pty Ltd and cannot be reproduced without written permission.

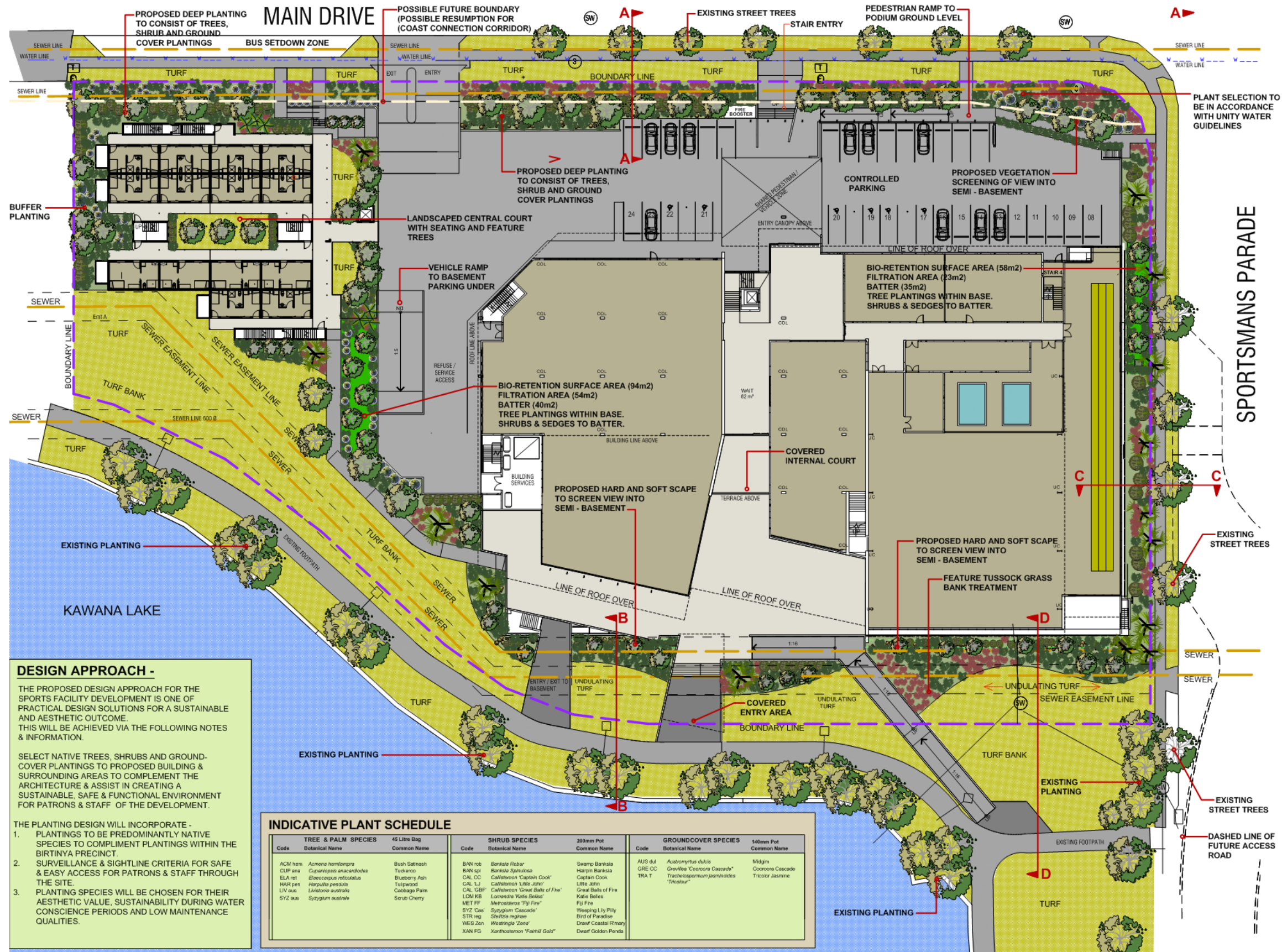
Sunshine Coast

PROJECT No: 14599SSC
 DATE: 18.5.16
 SCALE: @ A1
 DRAWING No: A804-H

Suite 2, 9 Capital Place, Birtinya, QLD 4575
 Tel +61 7 5437 8574 Fax +61 7 5493 2716
 sunshinecoast@modedesign.com.au

Brisbane Sydney Melbourne Darwin Perth Sunshine Coast Gold Coast Auckland

www.modedesign.com.au



Legend:

- PROPOSED SPORTING CLUB & ACCOMMODATION
- TREES
- SHRUBS & GROUNDCOVERS
- TURF
- BIO-RETENTION BASIN
- SEWER LINE
- WATER LINE
- FUTURE RESUMPTION LINE
- BOUNDARY LINE

AMENDMENTS

REV	DATE	DESCRIPTION
A	13.05.15	ISSUE FOR APPROVAL
B	14.08.15	ISSUE FOR APPROVAL
C	23.11.15	ISSUE FOR APPROVAL
D	02.12.15	ISSUE FOR APPROVAL
E	17.05.16	ISSUE FOR APPROVAL
F	30.05.16	ISSUE FOR APPROVAL
F	23.08.16	ISSUE FOR APPROVAL

element design

element design landscape architecture

MASTER PLANNING • SUBDIVISIONS • COMMERCIAL DEVELOPMENTS • RESORTS • PARKLANDS • REVEGETATION • MULTI-UNITS

151 Brisbane Rd, Mooloolaba
 Phone 07 5444 6155, Fax 07 5444 6055
 PO Box 1546, Buderim QLD 4556
 admin@elementdesign.net.au

PROJECT: 'HIGH PERFORMANCE SPORTS & COMMUNITY HUB AT CNR SPORTSMANS PARADE & MAIN DRIVE, BIRTINYA'

CLIENT: SUNSHINE COAST COMMUNITY & SPORTS CLUB

TYPE: CONCEPT LANDSCAPE PLAN

ISSUE **F**
ED 15101 DA - 01

Scale 1:500 @ A3
 Design JV Drawn JV
 Sheet 1 OF 3

Date 13 MAY 2015

© COPYRIGHT 2015 ELEMENT DESIGN QLD PTY LTD
 Copyright in the whole and any part of this document belongs to ELEMENT DESIGN QLD PTY LTD and may not be used, copied, reprinted, stored or disseminated without the prior written consent of ELEMENT DESIGN QLD PTY LTD.

DESIGN APPROACH -

THE PROPOSED DESIGN APPROACH FOR THE SPORTS FACILITY DEVELOPMENT IS ONE OF PRACTICAL DESIGN SOLUTIONS FOR A SUSTAINABLE AND AESTHETIC OUTCOME. THIS WILL BE ACHIEVED VIA THE FOLLOWING NOTES & INFORMATION.

SELECT NATIVE TREES, SHRUBS AND GROUND-COVER PLANTINGS TO PROPOSED BUILDING & SURROUNDING AREAS TO COMPLEMENT THE ARCHITECTURE & ASSIST IN CREATING A SUSTAINABLE, SAFE & FUNCTIONAL ENVIRONMENT FOR PATRONS & STAFF OF THE DEVELOPMENT.

THE PLANTING DESIGN WILL INCORPORATE -

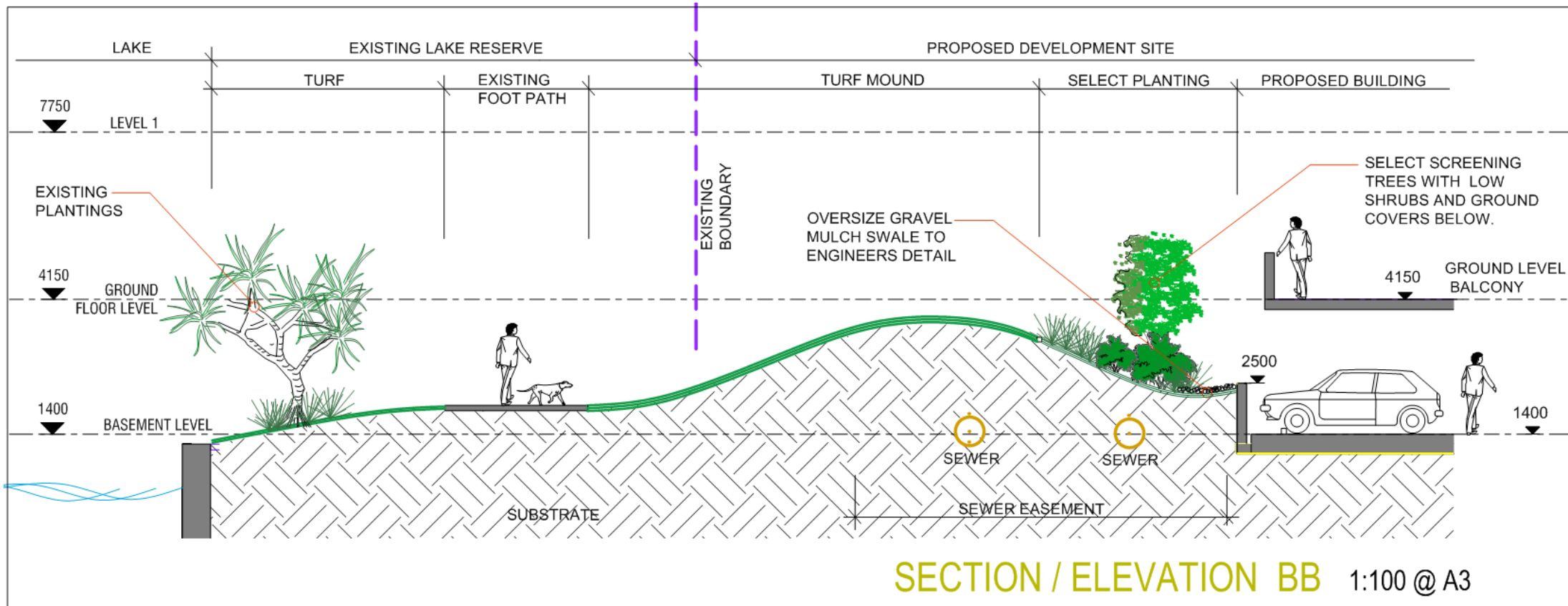
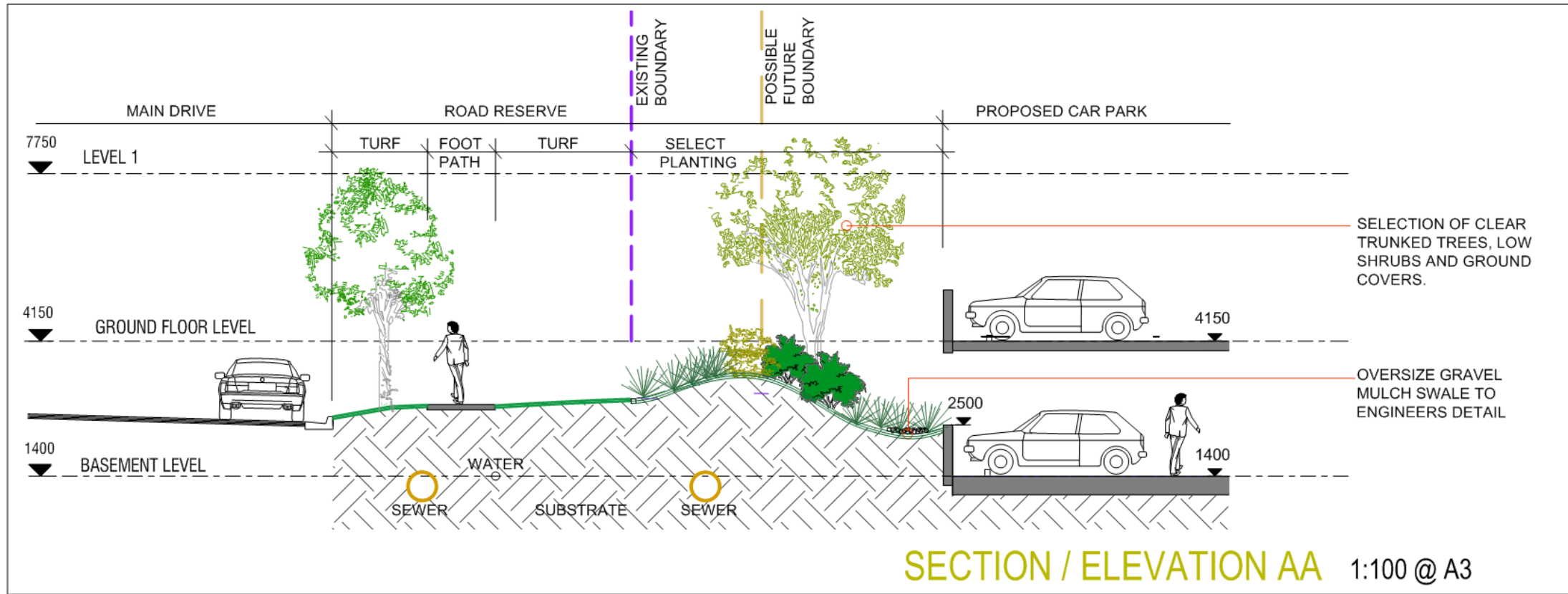
1. PLANTINGS TO BE PREDOMINANTLY NATIVE SPECIES TO COMPLIMENT PLANTINGS WITHIN THE BIRTINYA PRECINCT.
2. SURVEILLANCE & SIGHTLINE CRITERIA FOR SAFE & EASY ACCESS FOR PATRONS & STAFF THROUGH THE SITE.
3. PLANTING SPECIES WILL BE CHOSEN FOR THEIR AESTHETIC VALUE, SUSTAINABILITY DURING WATER CONSCIENCE PERIODS AND LOW MAINTENANCE QUALITIES.

INDICATIVE PLANT SCHEDULE

TREE & PALM SPECIES		SHRUB SPECIES		GROUNDCOVER SPECIES	
Code	Botanical Name	Code	Botanical Name	Code	Botanical Name
ACM hem	Acroea hemibanga	BAN rob	Banksia Robur	AUS d4	Arctostaphylos dulcis
CUP ara	Cupressus anacardoides	BAN spi	Banksia Spinulosa	GRE CC	Grevillea 'Coorsona Cascade'
ELA ret	Elaeocarpus reticulatus	CAL CC	Callistemon 'Captain Cook'	TRA T	Trachelospermum jasminoides
HWB pen	Hamamelis penicillata	CAL L1	Callistemon Little John'		'Tricolor'
LIV auc	Livistona australis	CAL GBP	Callistemon 'Great Balls of Fire'		
SYZ aus	Syzygium australe	LDM KB	Lomandra 'Katie Bellus'		
		MET FF	Metrostachys 'F3' Fine'		
		SYZ Cas	Syzygium 'Cascade'		
		STR reg	Stellaria reginae		
		WES Zen	Wheatgrain 'Zona'		
		XAN PG	Xanthorrhoea 'Famill Gold'		
			Swamp Banksia		
			Haarp Banksia		
			Caplain Cook		
			Little John		
			Great Balls of Fire		
			Katie Bellus		
			F3 Fine'		
			Wheatgrain Lily Pilly		
			Bird of Paradise		
			Dwarf Coastal Rhamnus		
			Dwarf Golden Pinks		

'PROPOSED HIGH PERFORMANCE SPORTS & COMMUNITY HUB AT CNR SPORTSMANS PDE & MAIN DRIVE, BIRTINYA.

LANDSCAPE CONCEPT PLAN - Sheet 01



element design
 landscape architecture

MASTER PLANNING • SUBDIVISIONS • COMMERCIAL DEVELOPMENTS • RESORTS • PARKLANDS • REVEGETATION • MULTI-UNITS
 131 Brisbane Rd. Mooloolah
 Phone 07 5444 6155 Fax 07 5444 6055
 PO Box 1346, Bunderr QLD 4556
 admin@elementdesign.net.au

PROJECT HIGH PERFORMANCE SPORTS & COMMUNITY HUB AT CNR SPORTSMANS PARADE & MAIN DRIVE, BIRTINYA

CLIENT SUNSHINE COAST COMMUNITY & SPORTS CLUB

DATE 17 MAY 2015

ISSUE F

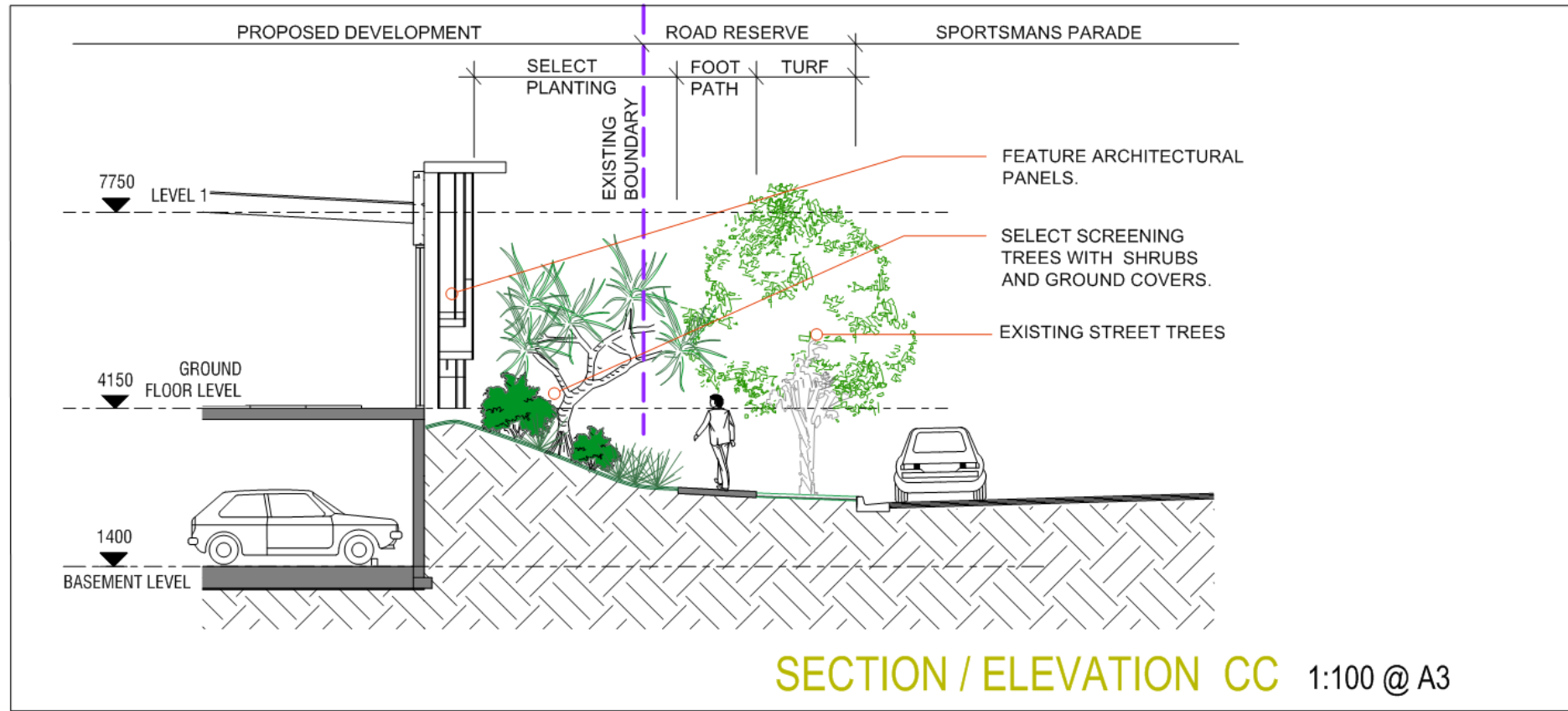
ED 15101 **DA - 02**

Date 17 MAY 2015
 Scale 1:100 @ A3
 Design JV Drawn JV
 Sheet 2 OF 3

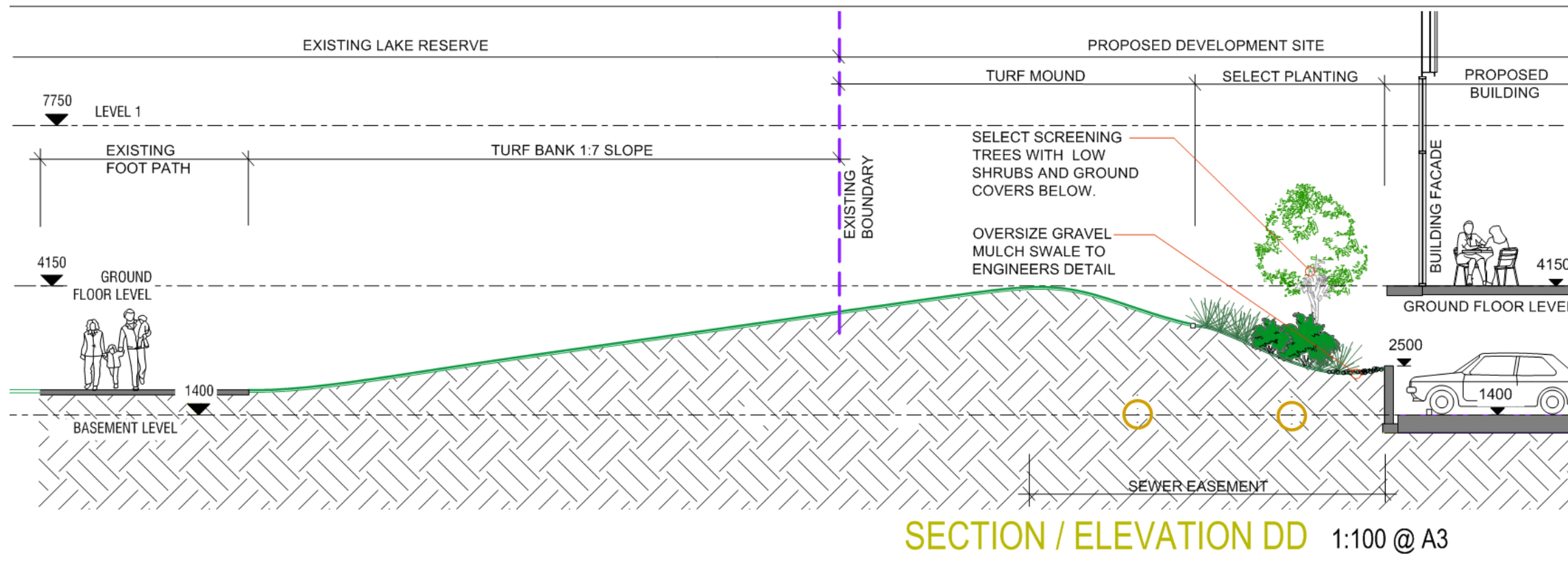
© COPYRIGHT 2015 ELEMENT DESIGN QLD PTY LTD
 Copyright in the whole and every part of this document belongs to ELEMENT DESIGN QLD PTY LTD and may not be used, sold, transferred, copied or reproduced in whole or in part in any manner or form or in any way or by any means without the prior written consent of ELEMENT DESIGN QLD PTY LTD.

PROPOSED HIGH PERFORMANCE SPORTS & COMMUNITY HUB AT CNR SPORTSMANS PARADE & MAIN DRIVE, BIRTINYA.

LANDSCAPE CONCEPT PLAN - Sheet 02



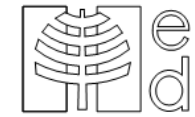
SECTION / ELEVATION CC 1:100 @ A3



SECTION / ELEVATION DD 1:100 @ A3

PROPOSED HIGH PERFORMANCE SPORTS & COMMUNITY HUB
 AT CNR SPORTSMANS PARADE & MAIN DRIVE, BIRTINYA.

LANDSCAPE CONCEPT PLAN - Sheet 03



AMENDMENTS	DATE	DESCRIPTION
A	13.05.16	NOT ISSUED
B	14.06.16	NOT ISSUED
C	23.11.16	NOT ISSUED
D	02.12.16	NOT ISSUED
E	17.05.16	ISSUE FOR APPROVAL
F	22.05.16	ISSUE FOR APPROVAL



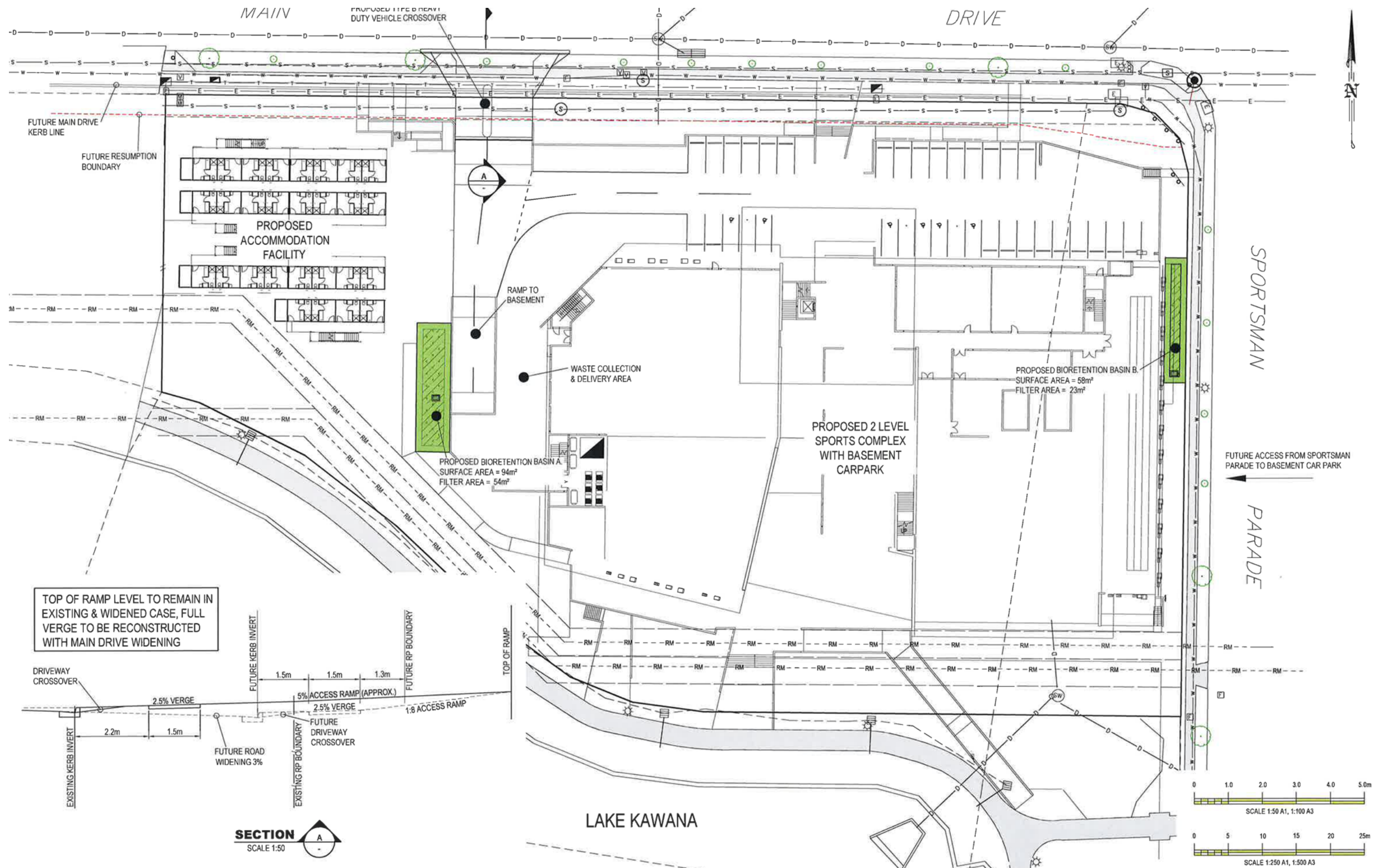
element design
 landscape architecture
 MASTER PLANNING • SUBDIVISIONS •
 COMMERCIAL DEVELOPMENTS • RESORTS •
 PARKLANDS • REVEGETATION • MULTI-UNITS
 131 Birlinn Rd. Mooloolah
 Phone 07 5444 6155 Fax 07 5444 6055
 PO Box 1346, Buderim QLD 4556
 admin@elementdesign.net.au

PROJECT: HIGH PERFORMANCE
 SPORTS & COMMUNITY HUB
 AT
 CNR SPORTSMANS PARADE
 & MAIN DRIVE, BIRTINYA
 CLIENT: SUNSHINE COAST
 COMMUNITY & SPORTS CLUB
 DATE: 13.05.16
 DRAWN: F

ED 15101 DA - 03

Date: 13 MAY 2016
 Scale: 1:100 @ A3
 Design: JV Drawn: JV
 Sheet: 3 OF 3

© COPYRIGHT 2016 ELEMENT DESIGN QLD PTY LTD
 Copyright in the whole and every part of this document belongs to
 ELEMENT DESIGN QLD PTY LTD and may not be used, sold,
 transferred, copied or reproduced in whole or in part in any manner or
 form or by any means in any process without the prior written
 consent of ELEMENT DESIGN QLD PTY LTD.



NOTE: ONLY DRAWINGS MARKED "FOR CONSTRUCTION" AND BEARING AN ORIGINAL SIGNATURE SHALL BE USED FOR CONSTRUCTION PURPOSES.

REV	DATE	DESCRIPTION	BY	CHKD
1	11/02/2016	BUILDING LAYOUT AND ACCESS AMENDED	QKP	SR
2	18/11/2015	DRIVEWAY WIDENING, DRIVEWAY SECTION & FUTURE ACCESS ADDED	QKP	SR

PRELIMINARY
NOT FOR CONSTRUCTION

Director Approval
RPEQ - 4655

Design: QKP
 Drawn: QKP
 Date: NOV 15

Checked: _____
 Datum: AHD
 A1 SHEET SIZE

TATE
 PROFESSIONAL ENGINEERS

TATE PROFESSIONAL ENGINEERS PTY LTD
 A.B.N. 29 096 262 035
 39-45 First Avenue, Mooloolaba
 PO Box 1082, Mooloolaba, QLD, 4557
 Tel (07) 5457 5300 Fax (07) 5477 6100
 Email: engineers@tate.net.au
 Web: http://www.tate.net.au

FILENAME: C:\3839\15\PL02.dwg DATE: 11/01/16 2:43pm XREF: C:\3839\15\base

PROJECT:
SUNSHINE COAST COMMUNITY & SPORTING CLUB
 at MAIN DRIVE, KAWANA
 for VANTAGE

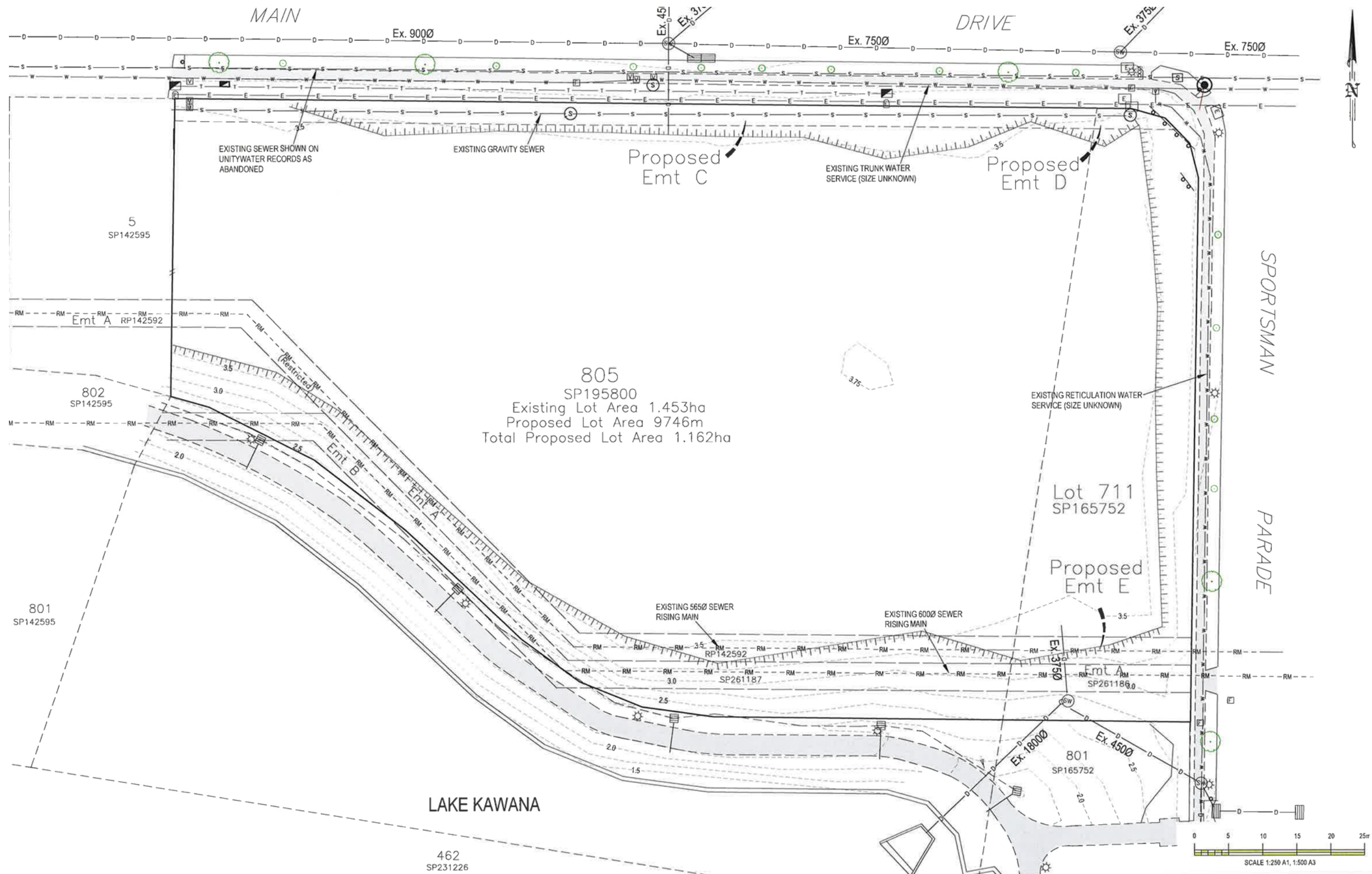
Council Ref:

DRAWING TITLE:
 DEVELOPMENT LAYOUT PLAN

DRAWING No: C5839/15/PL02

Revision	Sheet
B	2 of 7

© This plan is Copyright. Other than for the purposes of and subject to the conditions prescribed under the Copyright Act, no part of it may in any form or by any means (electronic, mechanical, repro, copying, photocopying, recording or otherwise) be reproduced, stored in a retrieval system or transmitted, without the prior written permission of Tate Professional Engineers. All intellectual property remains within Tate Professional Engineers. All enquiries should be directed to Tate Professional Engineers.



NOTE: ONLY DRAWINGS MARKED "FOR CONSTRUCTION" AND BEARING AN ORIGINAL SIGNATURE SHALL BE USED FOR CONSTRUCTION PURPOSES.

REV	DATE	DESCRIPTION	BY	CHKD

PRELIMINARY
 NOT FOR CONSTRUCTION

.....
 DIRECTOR APPROVAL
 RPEO - 4655

Design: QKP
 Drawn: QKP
 Date: NOV 15

Checked:

Datum: AHD
 AT SHEET SIZE

TATE
 PROFESSIONAL ENGINEERS

TATE PROFESSIONAL ENGINEERS PTY LTD
 A.B.N. 28 086 262 035
 39-45 First Avenue, Mooloolaba
 PO Box 1092, Mooloolaba, QLD, 4557
 Tel (07) 5457 5300 Fax (07) 5477 6100
 Email: engineers@tate.net.au
 Web: http://www.tate.net.au

FILENAME: C5839-15-PL01.dwg DATE: 11/16/16 2:44pm - XREF: C5839-15.rvt

PROJECT:
SUNSHINE COAST COMMUNITY & SPORTING CLUB
 at MAIN DRIVE, KAWANA
 for VANTAGE

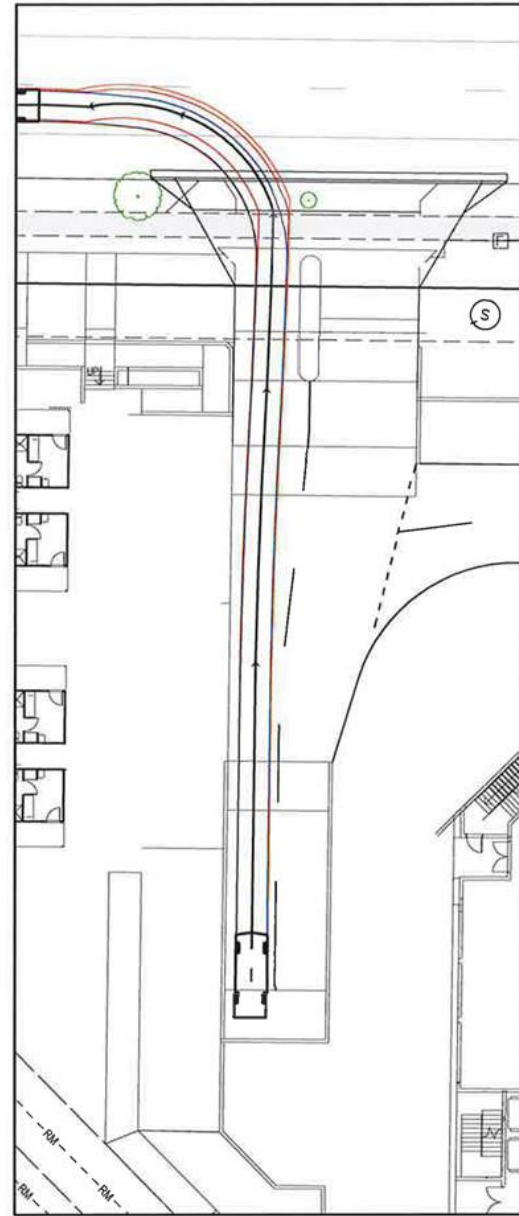
Council Ref:

DRAWING TITLE:
EXISTING SERVICES PLAN

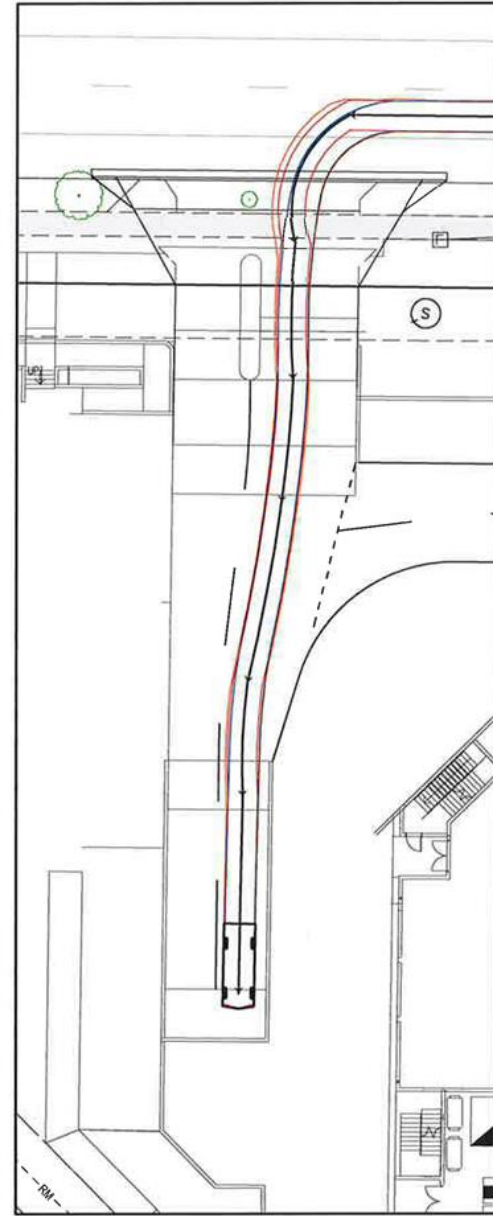
DRAWING No: C5839/15/PL01

Revision	Sheet
	1 of 7

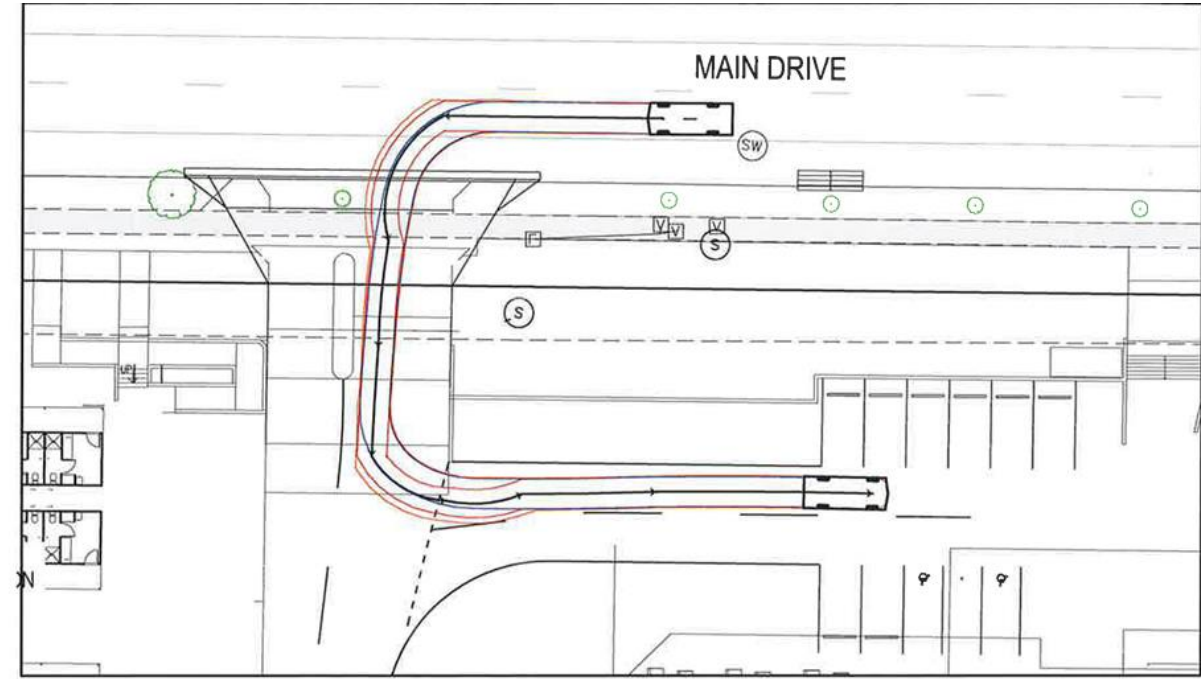
© This plan is Copyright. Other than for the purposes of and subject to the conditions provided under the Copyright Act, no part of it may in any form or by any means (electronic, mechanical, photocopying, recording or otherwise) be reproduced, stored in a retrieval system or transmitted without the prior written permission of Tate Professional Engineers. All intellectual property remains within Tate Professional Engineers. All enquiries should be directed to Tate Professional Engineers.



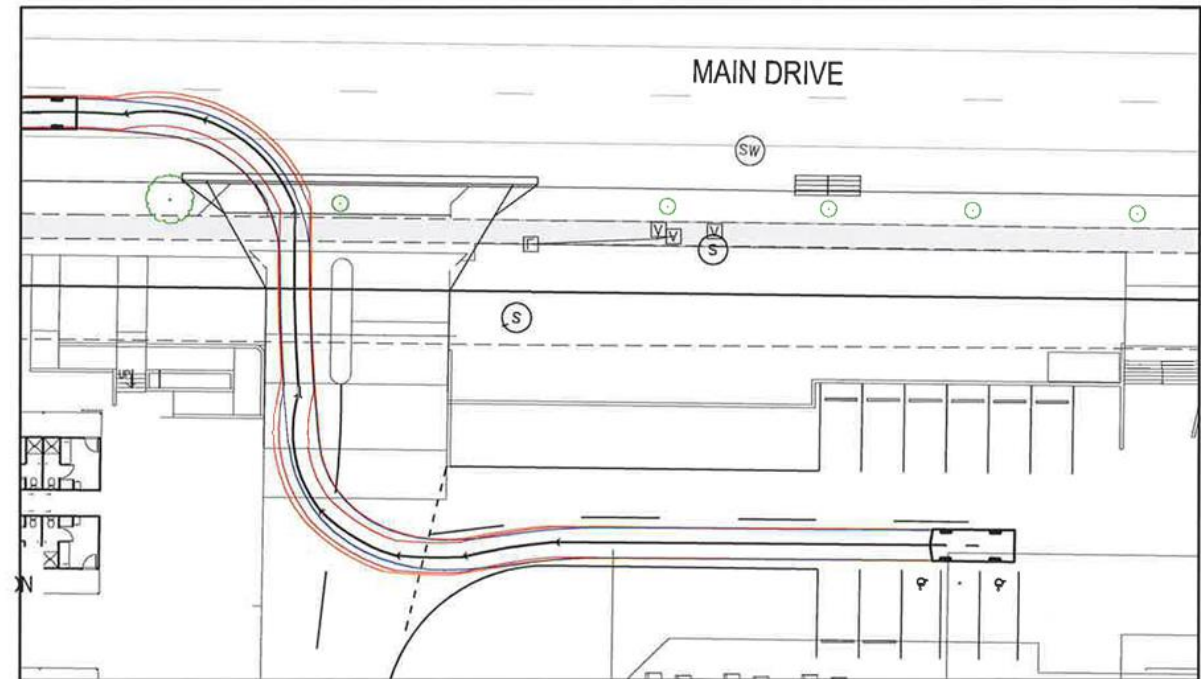
LARGE PASSENGER VEHICLE EXITING BASEMENT CAR PARK



LARGE PASSENGER VEHICLE ENTERING BASEMENT CAR PARK

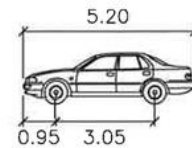


LARGE PASSENGER VEHICLE ENTERING GROUND LEVEL CAR PARK

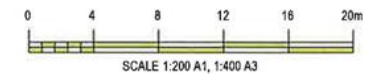


LARGE PASSENGER VEHICLE EXITING GROUND LEVEL CAR PARK

meters
 Width : 1.94
 Track : 1.84
 Lock to Lock Time : 6.0
 Steering Angle : 33.6



PASSENGER-CAR



NOTE: ONLY DRAWINGS MARKED "FOR CONSTRUCTION" AND BEARING AN ORIGINAL SIGNATURE SHALL BE USED FOR CONSTRUCTION PURPOSES.

REV	DATE	DESCRIPTION	BY	CHKD
B	11/05/2016	BUILDING LAYOUT AND ACCESS AMENDED	QKP	SR
A	18/11/2015	VEHICLE MOVEMENT SHOWN TURNING RIGHT FROM SITE	QKP	QKP

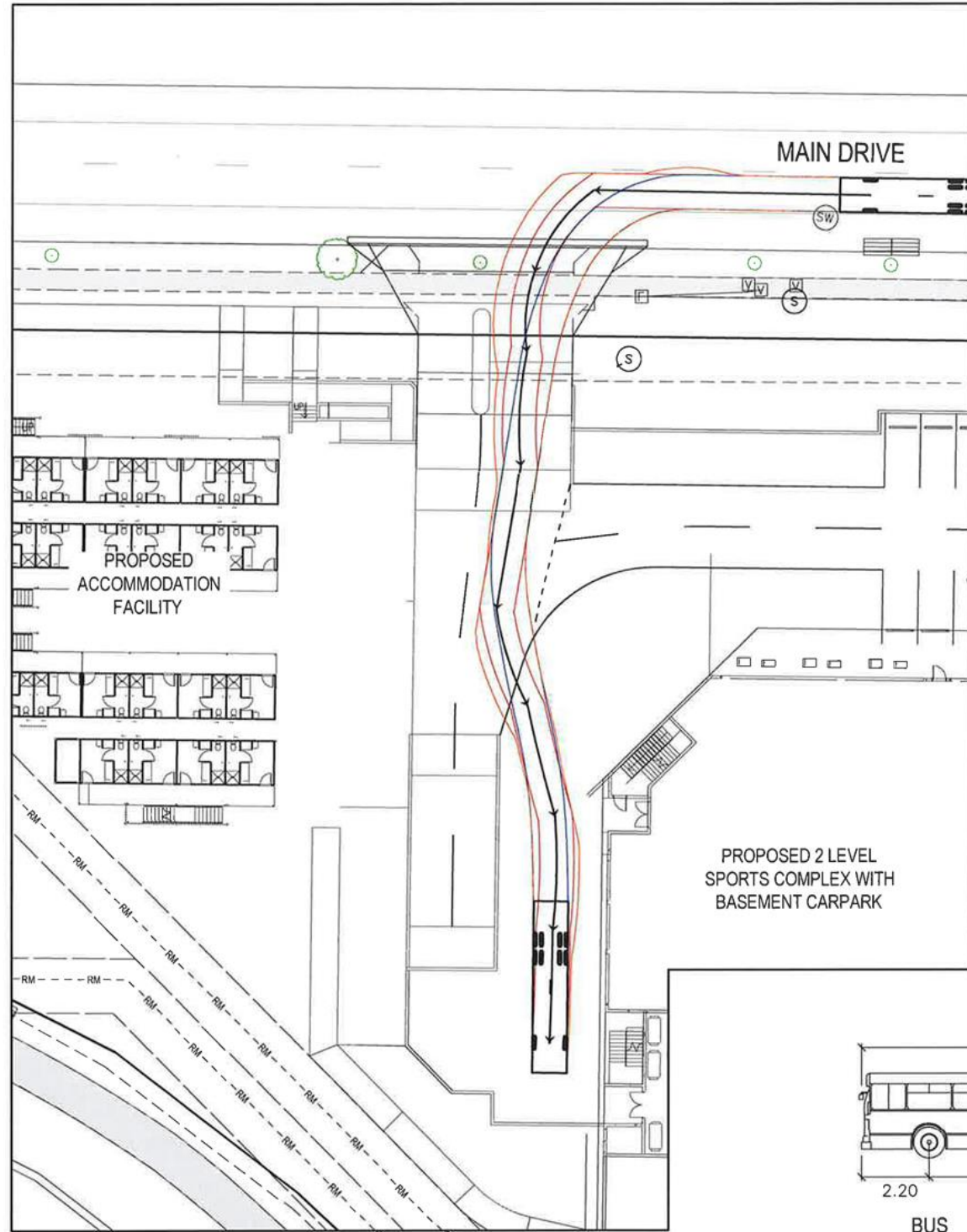
PRELIMINARY
 NOT FOR CONSTRUCTION
 DIRECTOR APPROVAL
 RPEO - 4665

Design: QKP
 Drawn: QKP
 Date: NOV 15
 Checked:
 Datum: AHD
 A1 SHEET SIZE

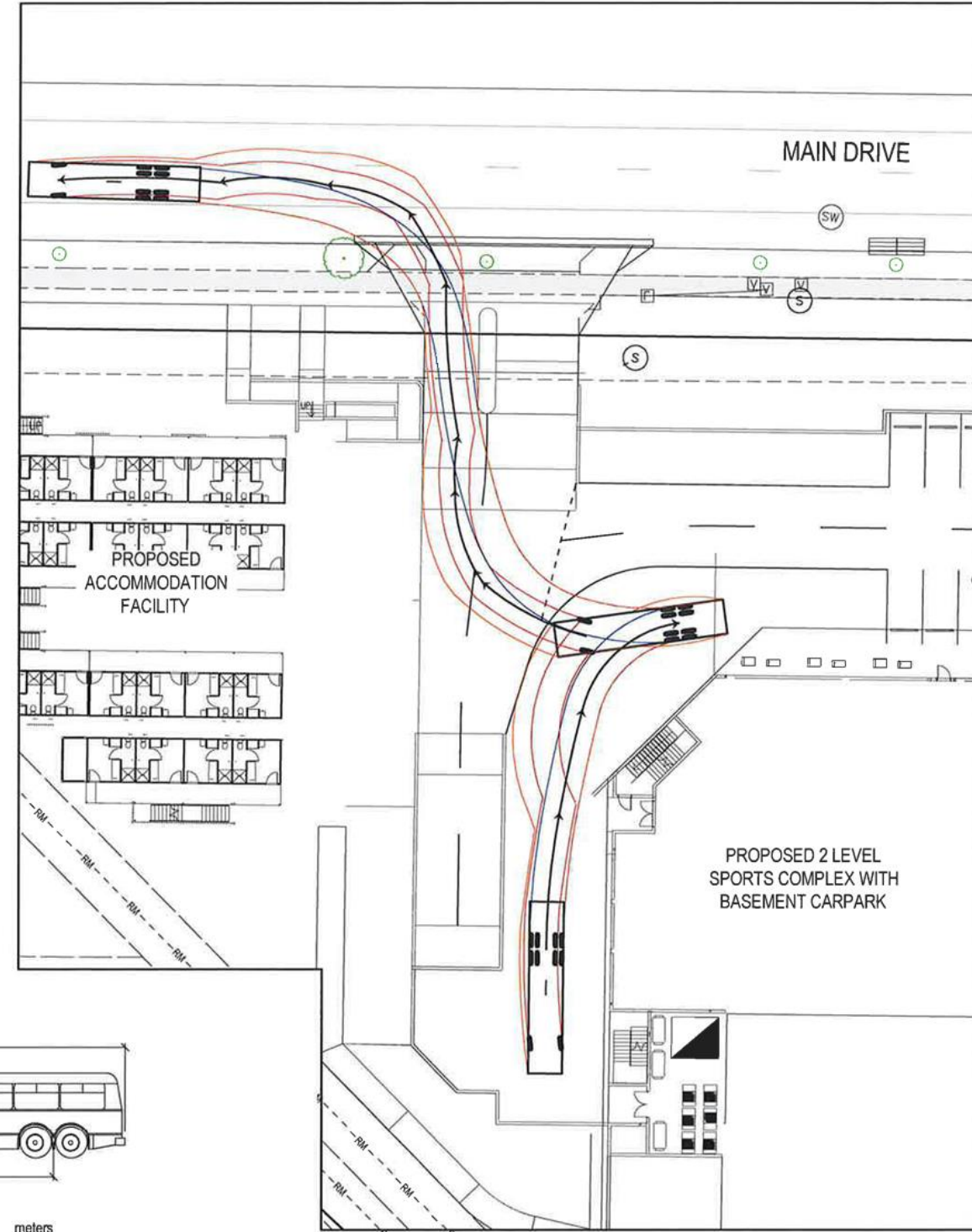
TATE
 PROFESSIONAL ENGINEERS
 TATE PROFESSIONAL ENGINEERS PTY LTD
 A.B.N. 28 086 262 035
 39-45 First Avenue, Mooloolaba
 PO Box 1092, Mooloolaba, QLD, 4557
 Tel (07) 5457 5300 Fax (07) 5477 6100
 Email: engineers@tate.net.au
 Web: http://www.tate.net.au

PROJECT:
 SUNSHINE COAST COMMUNITY & SPORTING CLUB
 at MAIN DRIVE, KAWANA
 for VANTAGE

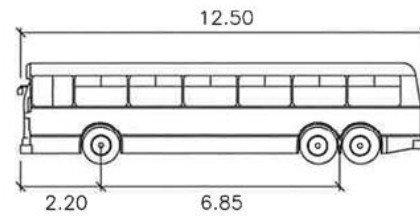
DRAWING TITLE:
 SWEEPED VEHICLE PATHS
 FOR LARGE PASSENGER VEHICLE
 DRAWING No: C5839/15/PL05
 Revision B Sheet 5 of 7
 © This plan is Copyright. It may be used for the purposes of and subject to the conditions prescribed under the Copyright Act, as part of a map in any form or by any means (electronic, mechanical, photocopying, recording or otherwise) be reproduced, stored in a retrieval system or transmitted without the prior written permission of Tate Professional Engineers. All intellectual property remains within Tate Professional Engineers. All enquiries should be directed to Tate Professional Engineers.



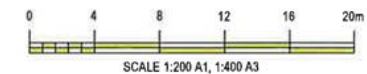
12.5m BUS ENTERING SITE



12.5m BUS EXISTING SITE



BUS	meters
Width	: 2.50
Track	: 2.50
Lock to Lock Time	: 6.0
Steering Angle	: 36.6



NOTE: ONLY DRAWINGS MARKED "FOR CONSTRUCTION" AND BEARING AN ORIGINAL SIGNATURE SHALL BE USED FOR CONSTRUCTION PURPOSES.

REV	DATE	DESCRIPTION	BY	CHKD
A	11/05/2016	BUILDING LAYOUT AND ACCESS AMENDED	QKP	SR

PRELIMINARY
 NOT FOR CONSTRUCTION

.....
 DIRECTOR APPROVAL
 RPEC - 4665

Design: QKP
 Drawn: QKP
 Date: NOV 15

Checked:

Datum: AHD
 A1 SHEET SIZE

TATE
 PROFESSIONAL ENGINEERS

TATE PROFESSIONAL ENGINEERS PTY LTD
 A.B.N. 28 086 262 035
 39-45 First Avenue, Mooloolaba
 PO Box 1092, Mooloolaba, QLD, 4557
 Tel (07) 5457 5300 Fax (07) 5477 6100
 Email: engineers@tate.net.au
 Web: http://www.tate.net.au

FILENAME: C5839 15-PL04.dwg, DATE: 11/05/16, 2:44pm, XREF: C5839-15-New

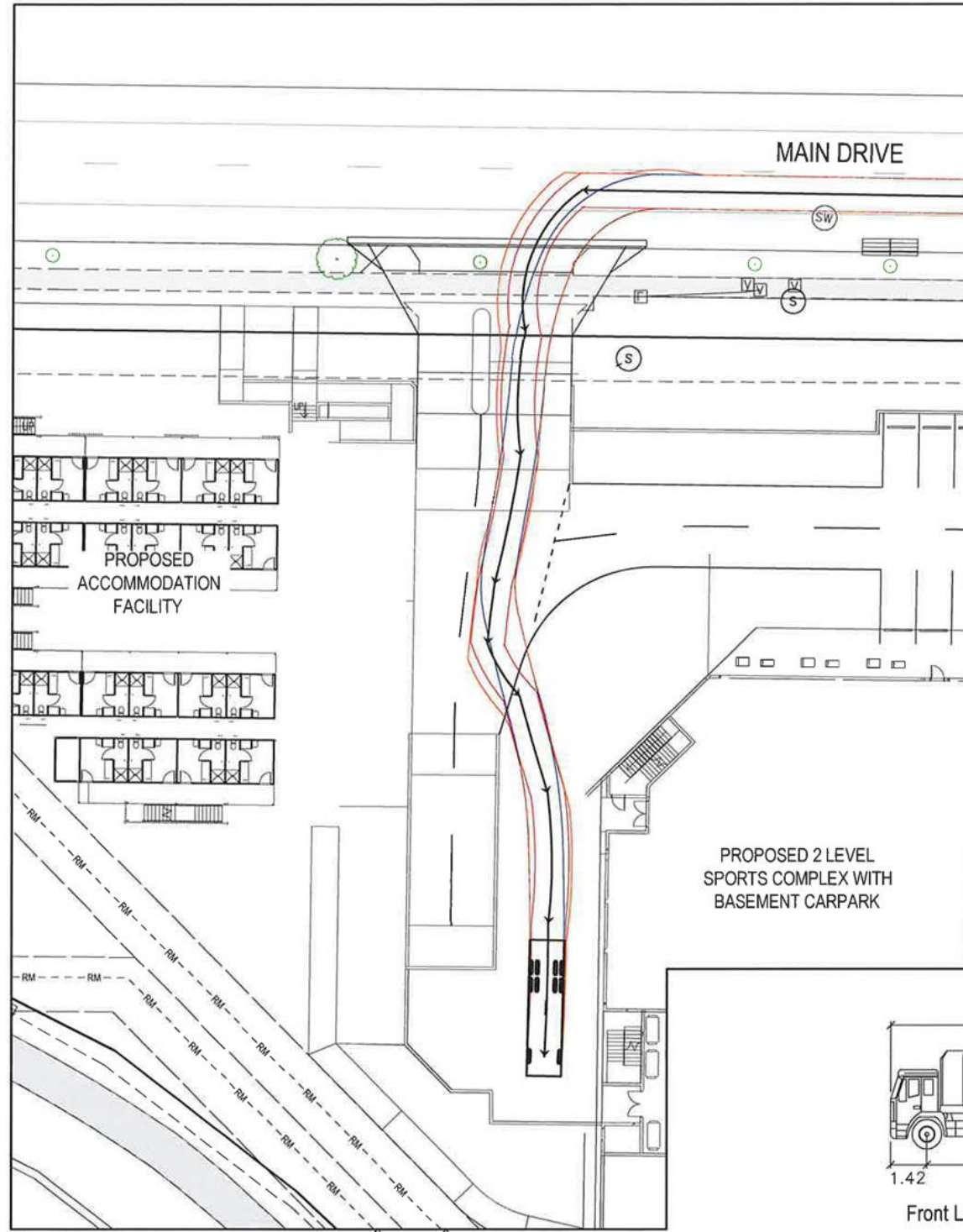
PROJECT:
SUNSHINE COAST COMMUNITY & SPORTING CLUB
 at MAIN DRIVE, KAWANA
 for VANTAGE

DRAWING TITLE:
SWEPT VEHICLE PATHS
 FOR 12.5m BUS

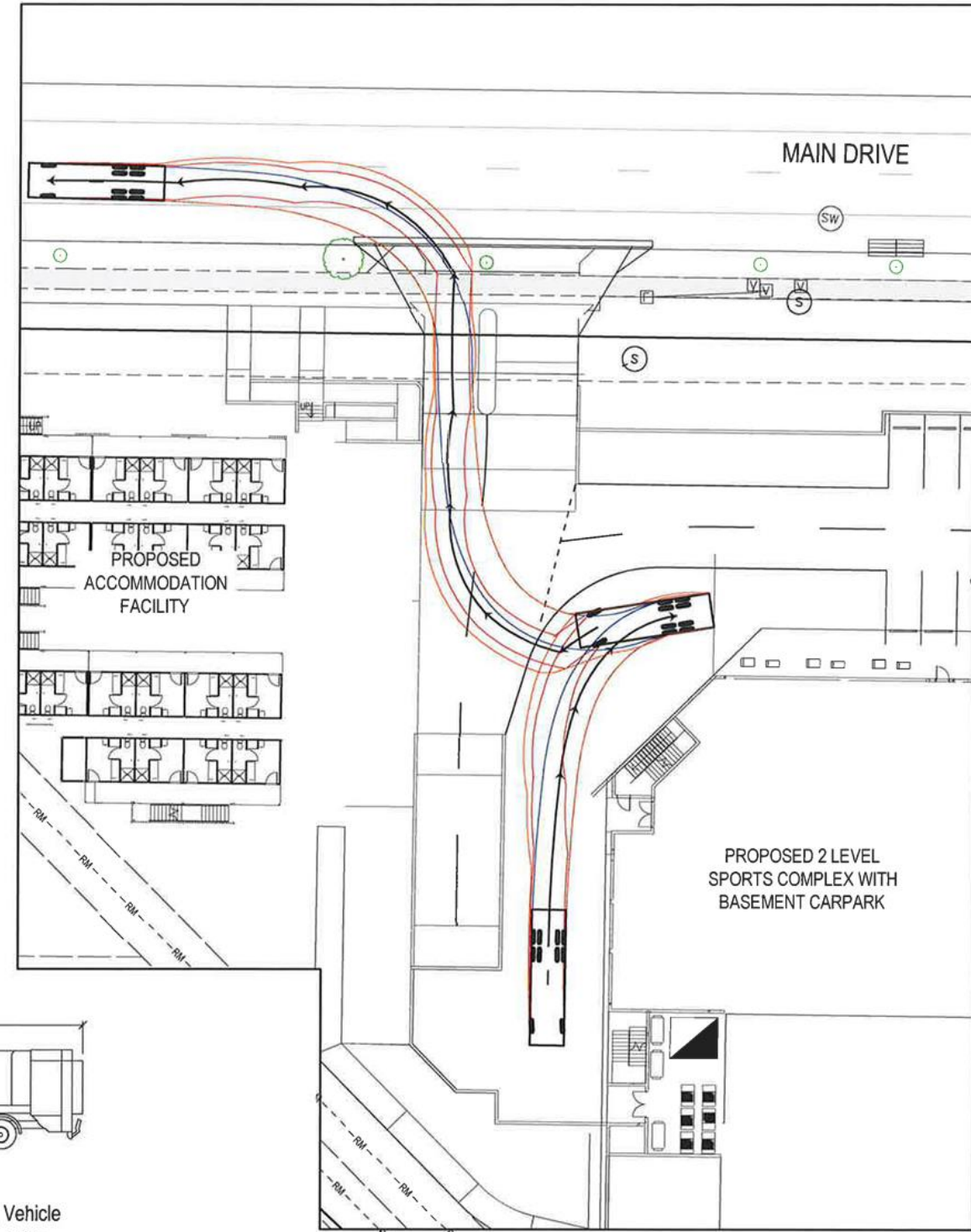
DRAWING No: C5839/15/PL04

Revision	Sheet
A	4 of 7

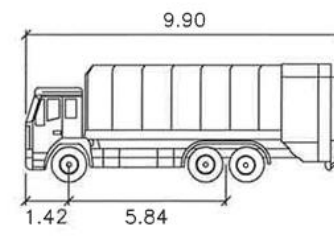
© This plan is Copyright. Other than for the purposes of and subject to the conditions prescribed under the Copyright Act, no part of it may in any form or by any means (electronic, mechanical, photocopying, recording or otherwise) be reproduced, stored in a retrieval system or transmitted without the prior written permission of Tate Professional Engineers. All intellectual property remains within Tate Professional Engineers. All enquiries should be directed to Tate Professional Engineers.



FRONT LOAD COLLECTION VEHICLE ENTERING SITE

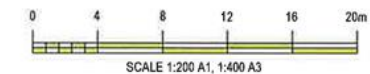


FRONT LOAD COLLECTION VEHICLE EXISTING SITE



Front Load collection Vehicle

	units
Width	: 2.50
Track	: 2.50
Lock to Lock Time	: 6.0
Steering Angle	: 35.7



NOTE: ONLY DRAWINGS MARKED "FOR CONSTRUCTION" AND BEARING AN ORIGINAL SIGNATURE SHALL BE USED FOR CONSTRUCTION PURPOSES.

REV	DATE	DESCRIPTION	BY	CHKD
A	11/05/2016	BUILDING LAYOUT AND ACCESS AMENDED	GKP	EN

PRELIMINARY
NOT FOR CONSTRUCTION

DIRECTOR APPROVAL
RPEQ - 4665

Design: GKP
 Drawn: GKP
 Date: NOV 15

Checked:

Datum AHD

A1 SHEET SIZE

TATE
PROFESSIONAL ENGINEERS

TATE PROFESSIONAL ENGINEERS PTY LTD
 A.B.N. 28 086 262 035
 39-45 First Avenue, Mooloolaba
 PO Box 1092, Mooloolaba, QLD, 4557
 Tel (07) 5457 5300 Fax (07) 5477 6100
 Email: engineers@tate.net.au
 Web: http://www.tate.net.au

FILENAME: C5839-15-PL03-PL00.dwg DATE: 11/01/16 2:45pm - XREF: C5839-15.dwg

PROJECT:
SUNSHINE COAST COMMUNITY & SPORTING CLUB
 at MAIN DRIVE, KAWANA
 for VANTAGE

Council Ref:

DRAWING TITLE:
SWEPT VEHICLE PATHS
FOR FRONT LOAD WASTE COLLECTION VEHICLE

DRAWING No: C5839/15/PL03

Revision	Sheet
A	3 of 7

© This plan is Copyright. Other than for the purposes of and subject to the conditions provided under the Copyright Act, no part of it may in any form or by any means (electronic, mechanical, photocopying, recording or otherwise) be reproduced, stored in a retrieval system or transmitted without the prior written permission of Tate Professional Engineers. All intellectual property remains within Tate Professional Engineers. All enquiries should be directed to Tate Professional Engineers.

