

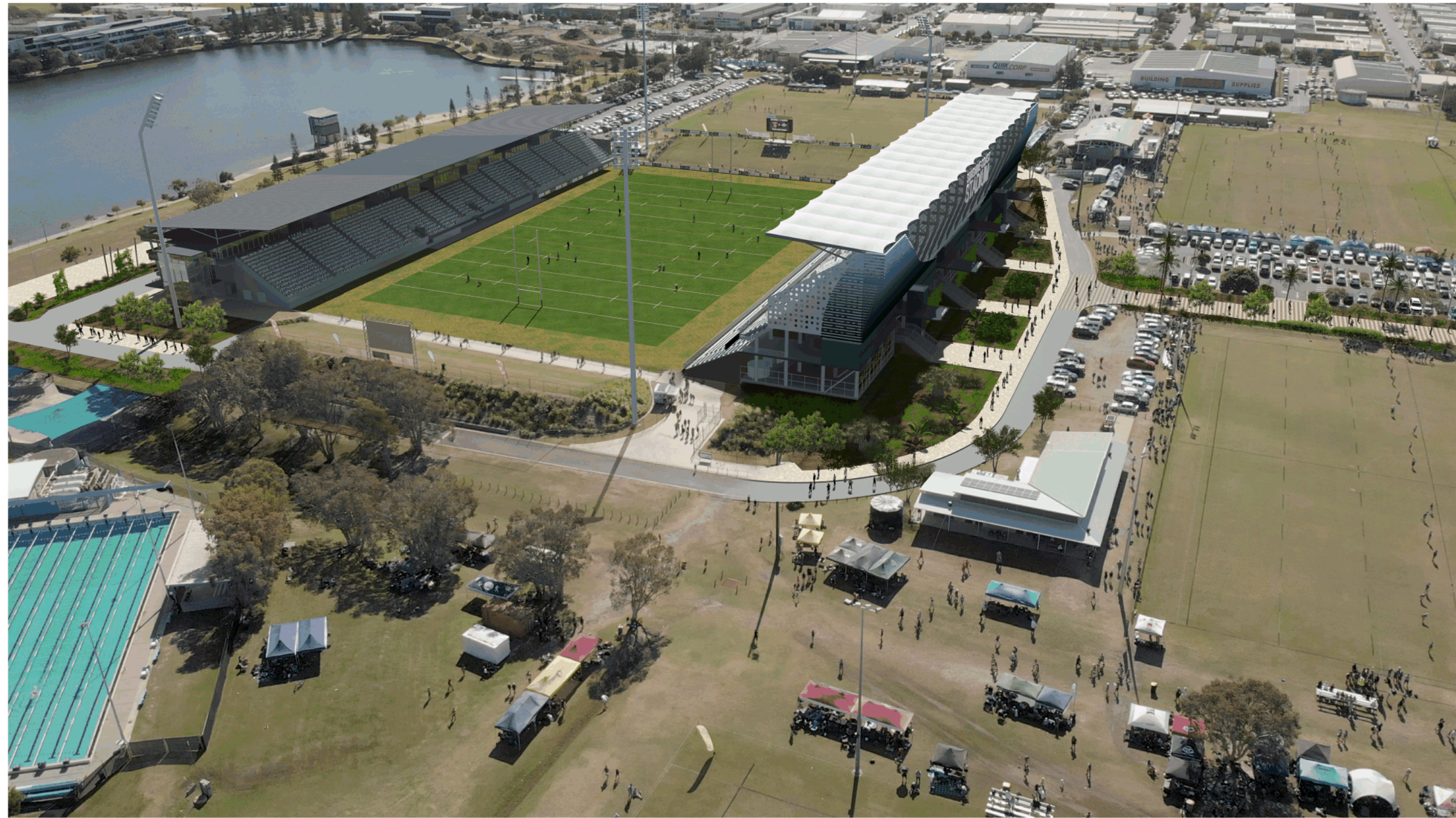


**STAGE 1 COMPLETE**

# Sunshine Coast Stadium



[www.sunshinecoast.qld.gov.au](http://www.sunshinecoast.qld.gov.au)  
07 5475 7272



STAGE 1 COMPLETE

Sunshine Coast Stadium



[www.sunshinecoast.qld.gov.au](http://www.sunshinecoast.qld.gov.au)  
07 5475 7272

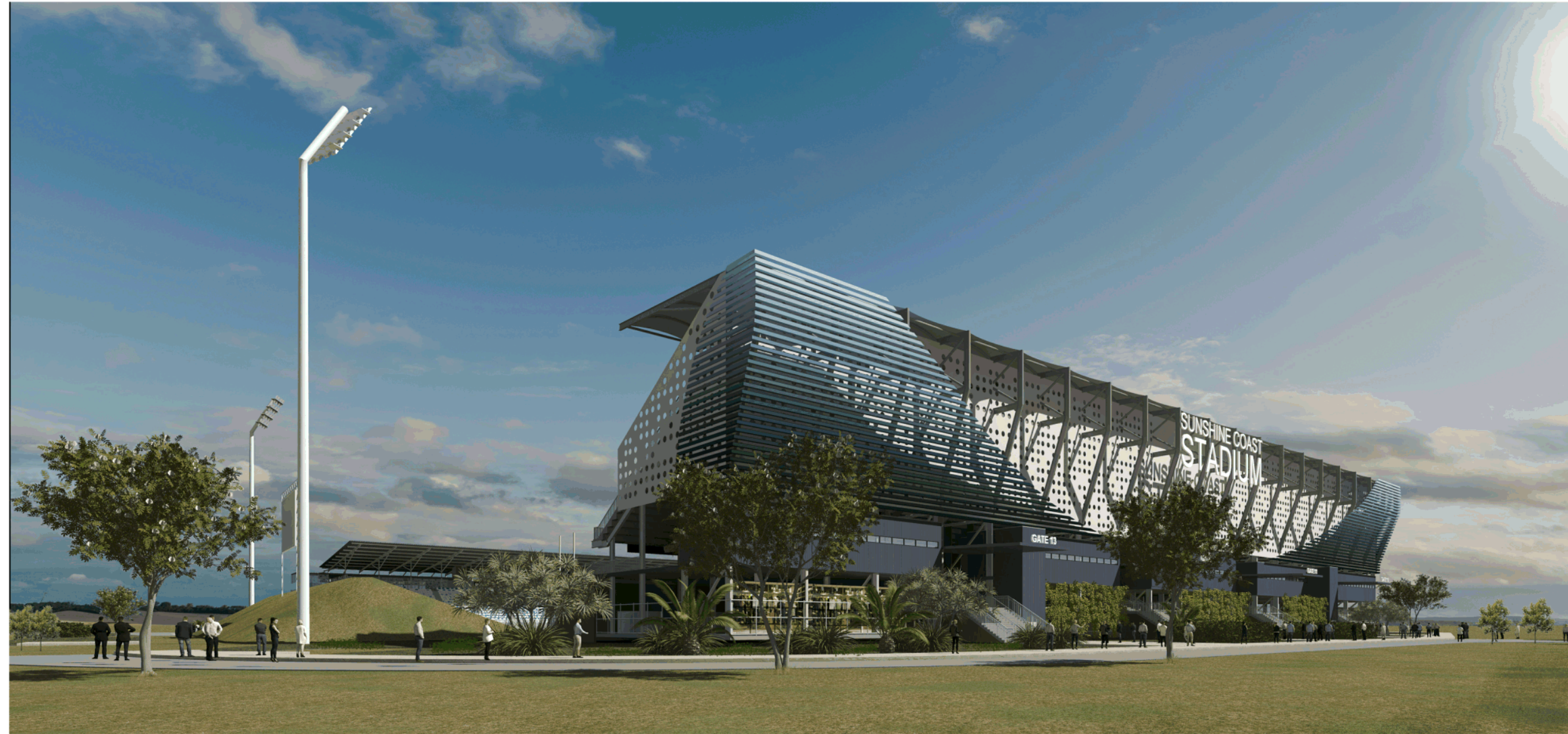


STAGE 1 COMPLETE

Sunshine Coast Stadium



[www.sunshinecoast.qld.gov.au](http://www.sunshinecoast.qld.gov.au)  
07 5475 7272



STAGE 1 COMPLETE

Sunshine Coast Stadium



[www.sunshinecoast.qld.gov.au](http://www.sunshinecoast.qld.gov.au)  
07 5475 7272



STAGE 1 COMPLETE

Sunshine Coast Stadium



[www.sunshinecoast.qld.gov.au](http://www.sunshinecoast.qld.gov.au)  
07 5475 7272



STADIUM END STATE

Sunshine Coast Stadium



[www.sunshinecoast.qld.gov.au](http://www.sunshinecoast.qld.gov.au)  
07 5475 7272

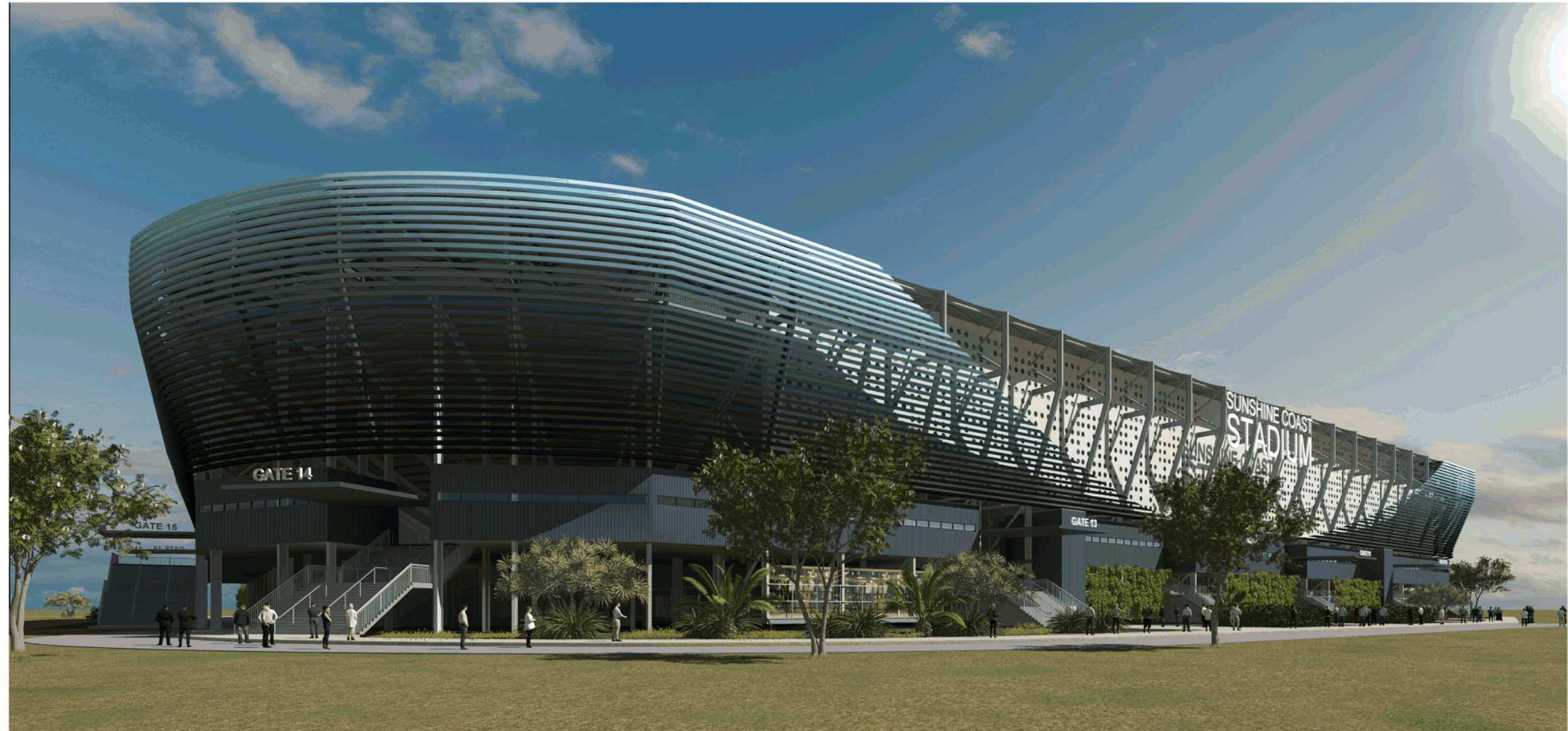


STADIUM END STATE

Sunshine Coast Stadium



[www.sunshinecoast.qld.gov.au](http://www.sunshinecoast.qld.gov.au)  
07 5475 7272



STADIUM END STATE

Sunshine Coast Stadium



[www.sunshinecoast.qld.gov.au](http://www.sunshinecoast.qld.gov.au)  
07 5475 7272



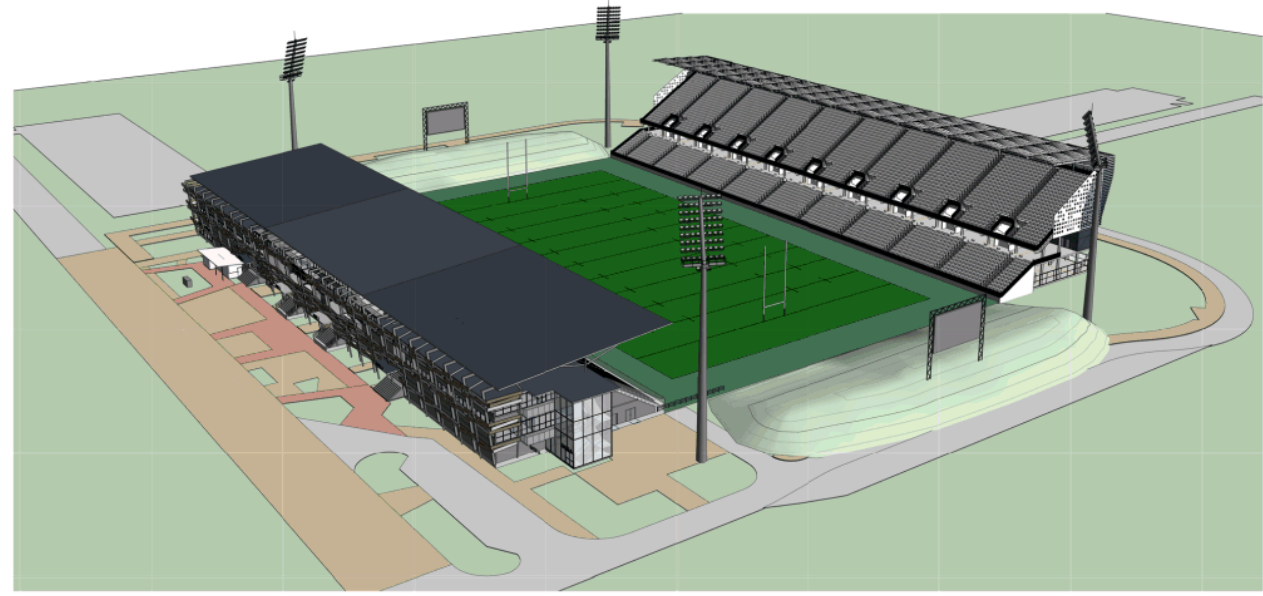


STADIUM END STATE

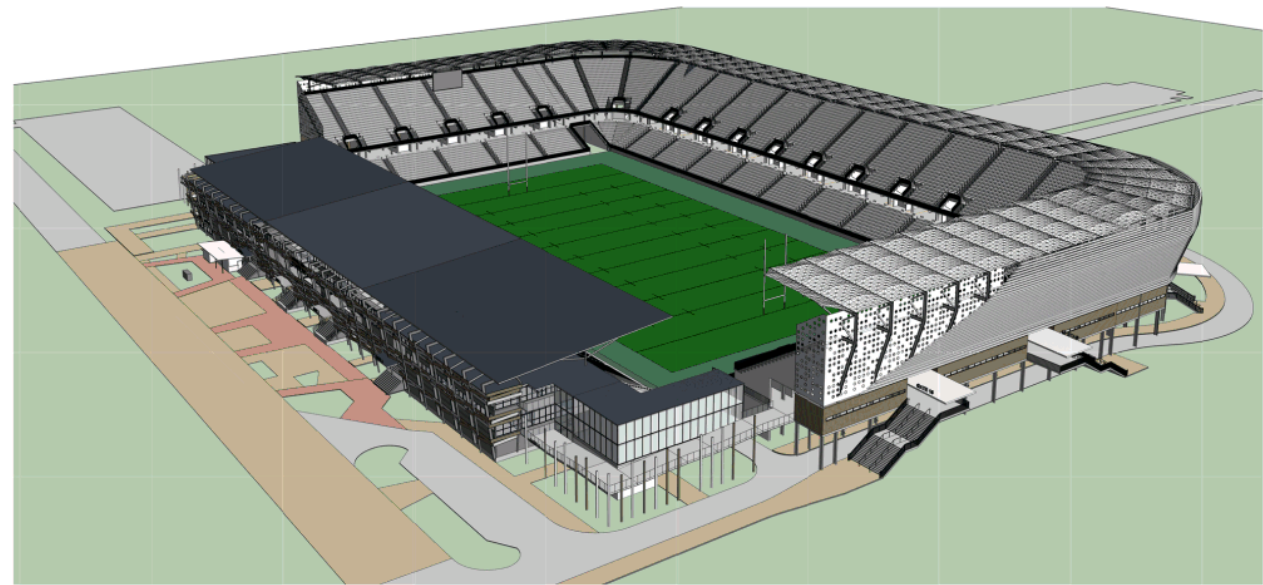
Sunshine Coast Stadium



[www.sunshinecoast.qld.gov.au](http://www.sunshinecoast.qld.gov.au)  
07 5475 7272



**STAGE 1 - COMPLETE**



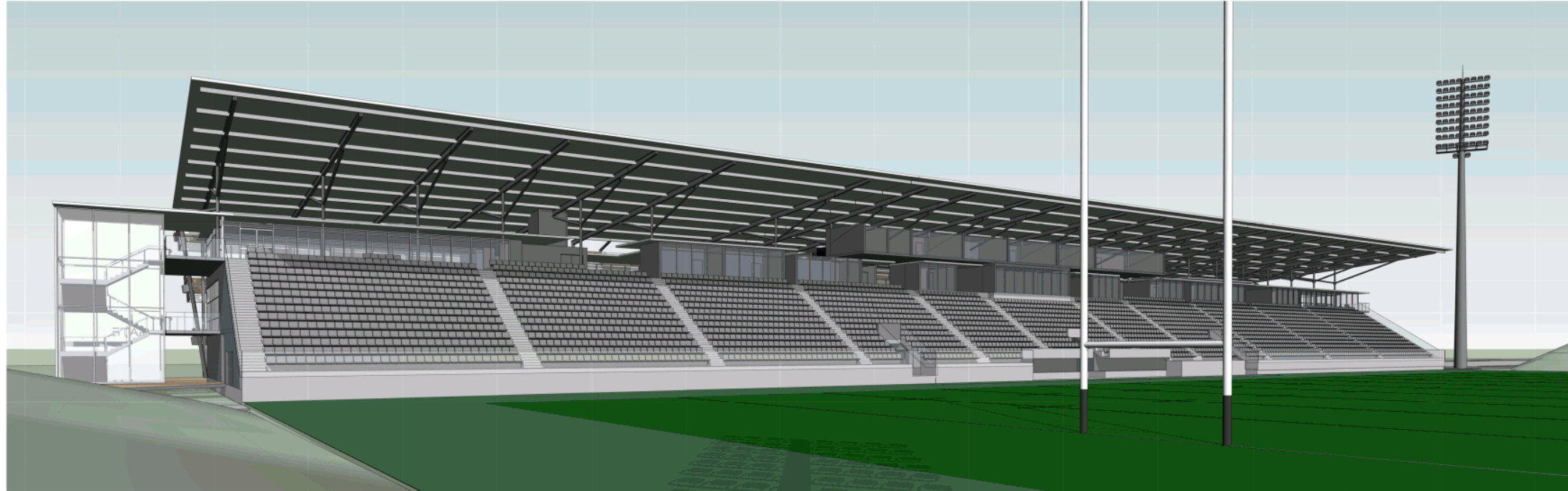
**STAGE 2 - STADIUM END STATE**

**SEATS PROVIDED AT EACH STAGE:**  
**STAGE 1 - 11,618 + MOUNDS**  
**END STATE - 23,732 APPROX.**  
EXCLUDES PWD & CORPORATE BOX SEATS.

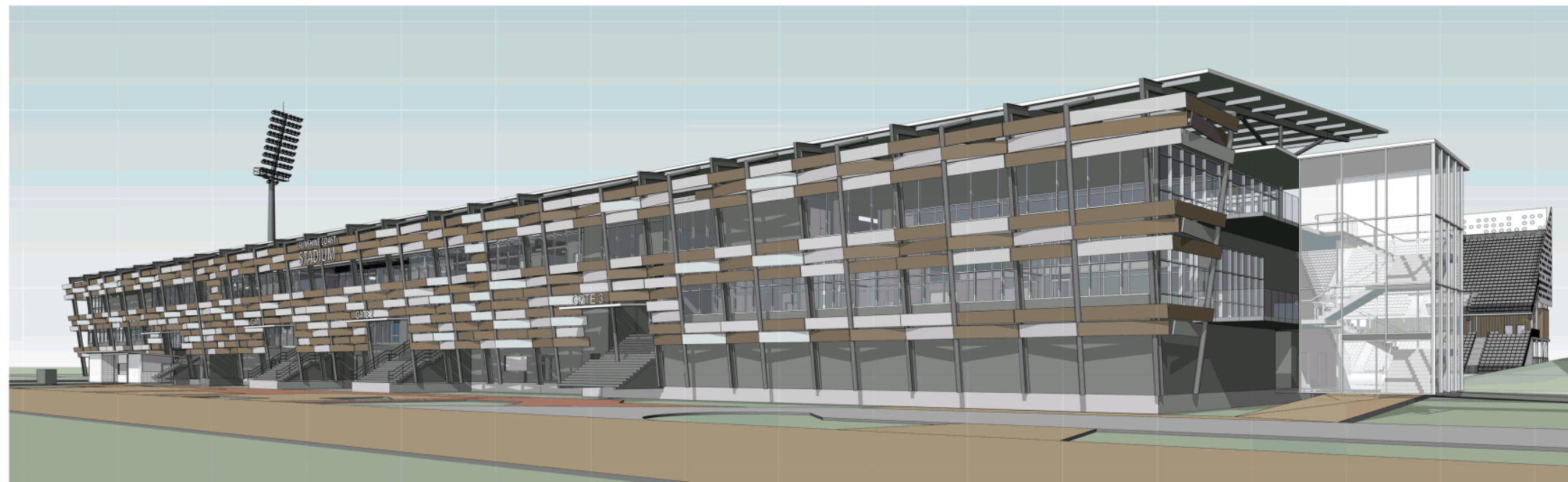
**Sunshine Coast Stadium**



[www.sunshinecoast.qld.gov.au](http://www.sunshinecoast.qld.gov.au)  
07 5475 7272



STAGE 1 WEST STAND FROM SOUTHEAST



STAGE 1 WEST STAND FROM SOUTHEAST

Sunshine Coast Stadium



[www.sunshinecoast.qld.gov.au](http://www.sunshinecoast.qld.gov.au)  
07 5475 7272

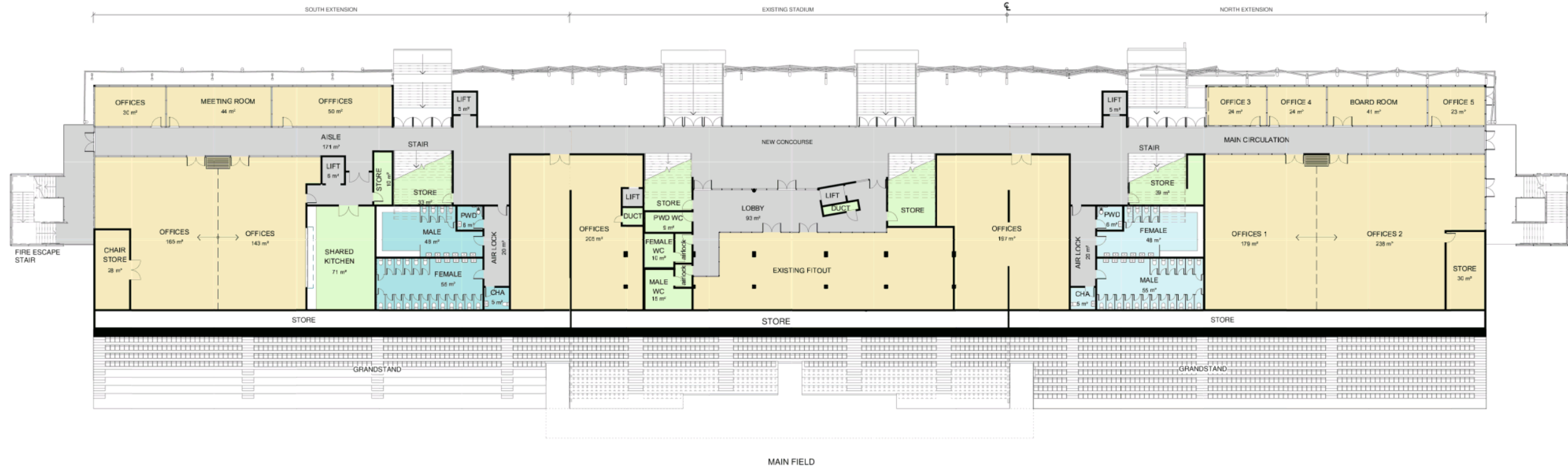


**WEST STAND STAGE 1 - GROUND FLOOR PLAN**

- Circulation
- Commercial / Offices
- Operational
- Player
- Public



[www.sunshinecoast.qld.gov.au](http://www.sunshinecoast.qld.gov.au)  
 07 5475 7272



**WEST STAND STAGE 1 - MEZZANINE FLOOR PLAN**

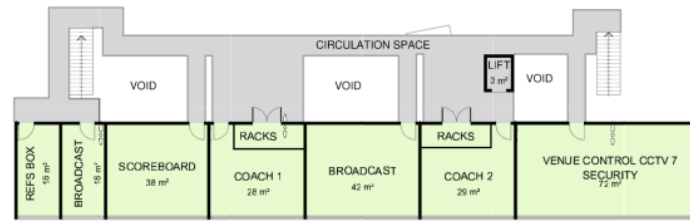
- Circulation
- Commercial / Offices
- Operational
- Player
- Public



**EXISTING WEST STAND SEATS = 1040**

**SEATS PROVIDED AT END OF STAGE 1:**  
**STAGE 1 EXISTING SEATING RECONFIGURED - 1,004**  
**STAGE 1 SOUTH EXTENSION - 1,272**  
**STAGE 1 NORTH EXTENSION - 1,257**

**STAGE 1 TOTAL SEATS FOR WEST STAND = 3,533**  
 EXCLUDES PWD & CORPORATE BOX SEATS.



**WEST STAND STAGE 1 - UPPER CONCOURSE ROOF LEVEL PLAN**

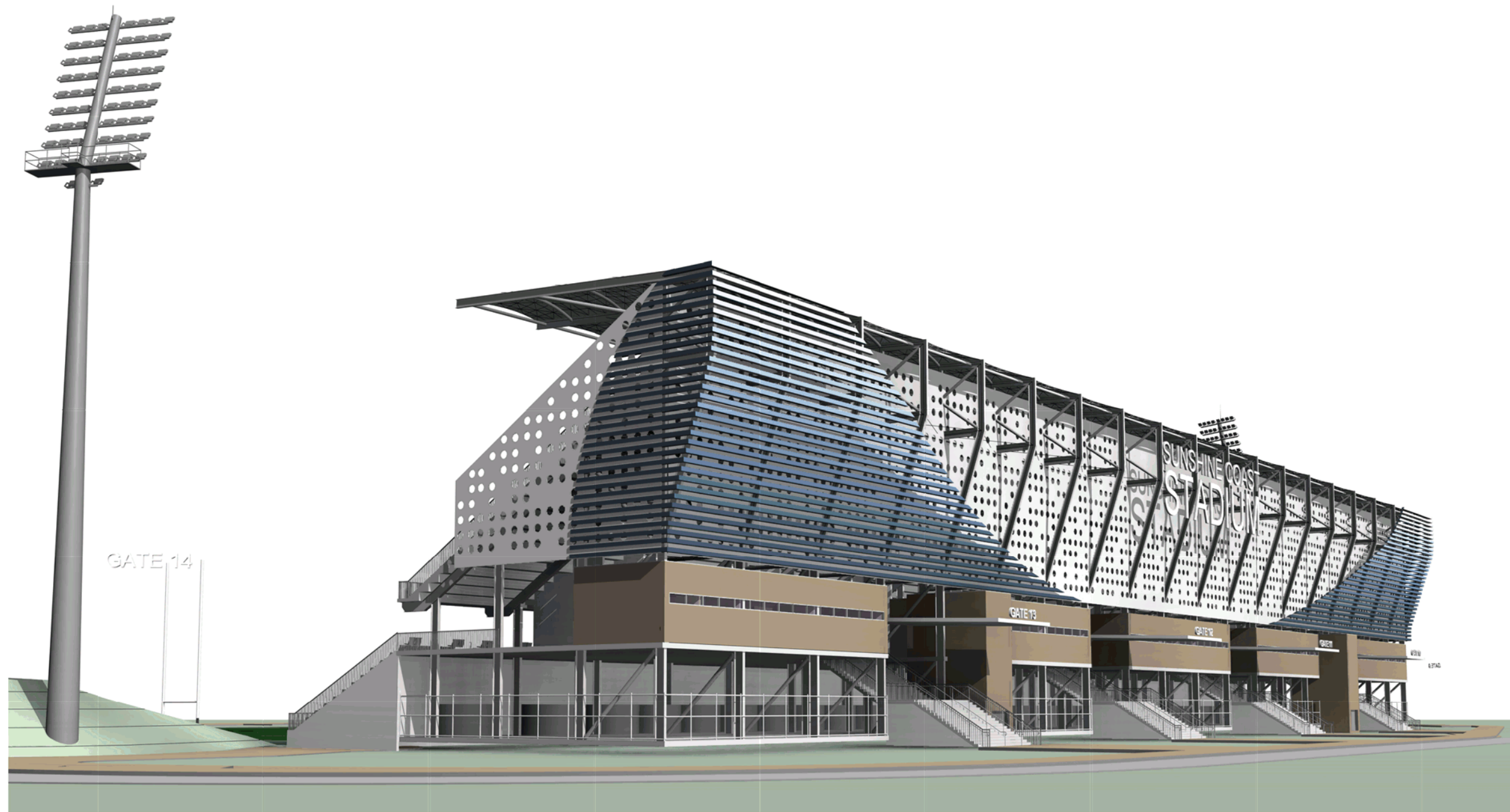


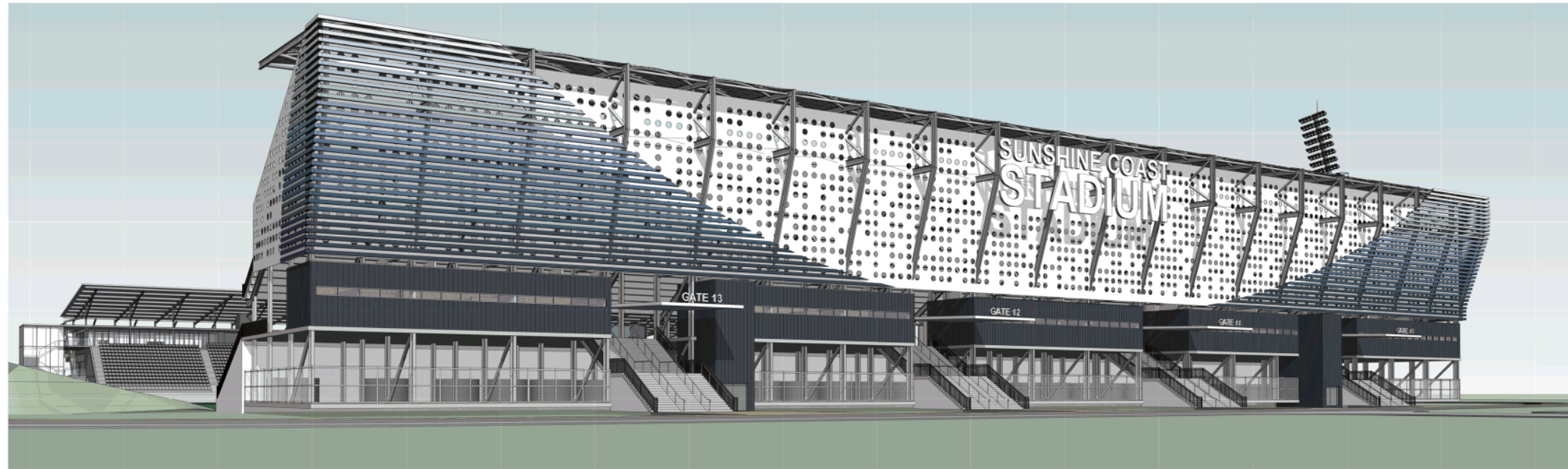
**WEST STAND STAGE 1 - UPPER CONCOURSE FLOOR PLAN**

- Circulation
- Commercial / Offices
- Operational
- Player
- Public

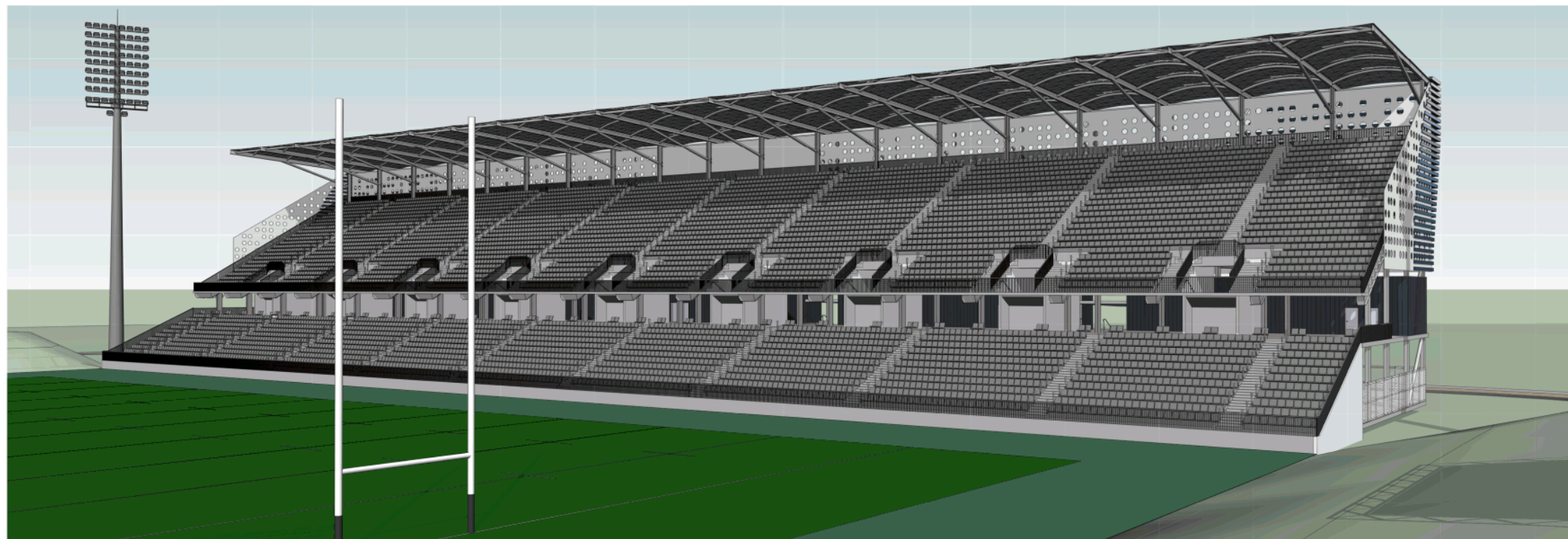


[www.sunshinecoast.qld.gov.au](http://www.sunshinecoast.qld.gov.au)  
 07 5475 7272





STAGE 1 EAST STAND FROM SOUTHEAST



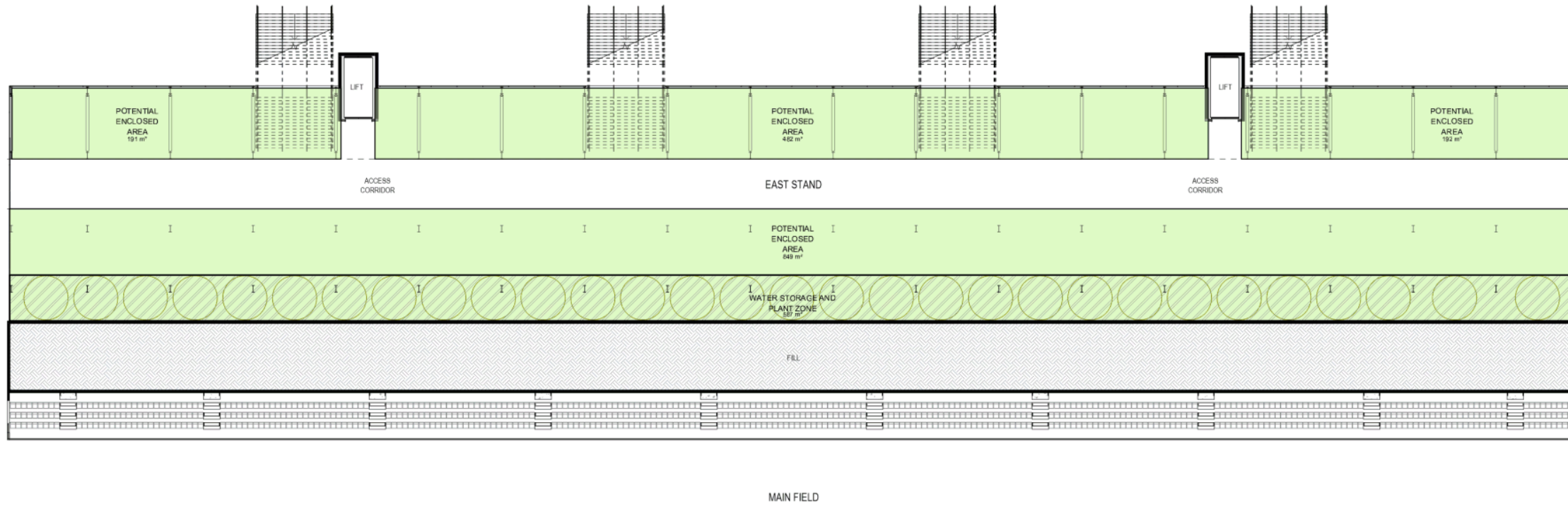
STAGE 1 EAST STAND FROM SOUTHEAST

Sunshine Coast Stadium








[www.sunshinecoast.qld.gov.au](http://www.sunshinecoast.qld.gov.au)  
07 5475 7272



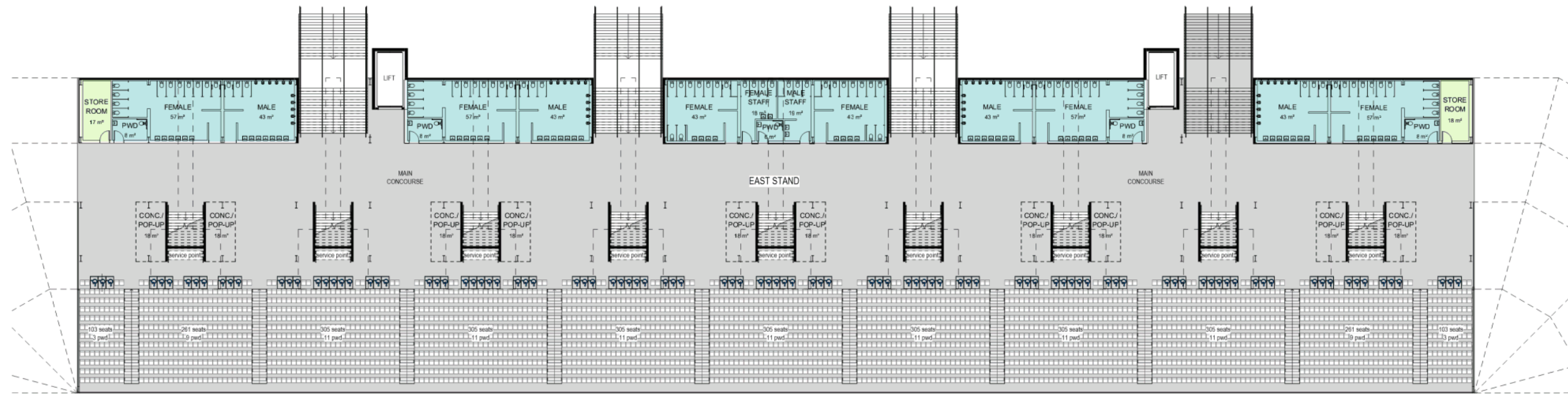


**EAST STAND GROUND FLOOR PLAN**

-  Circulation
-  Commercial / Offices
-  Operational
-  Player
-  Public



[www.sunshinecoast.qld.gov.au](http://www.sunshinecoast.qld.gov.au)  
07 5475 7272



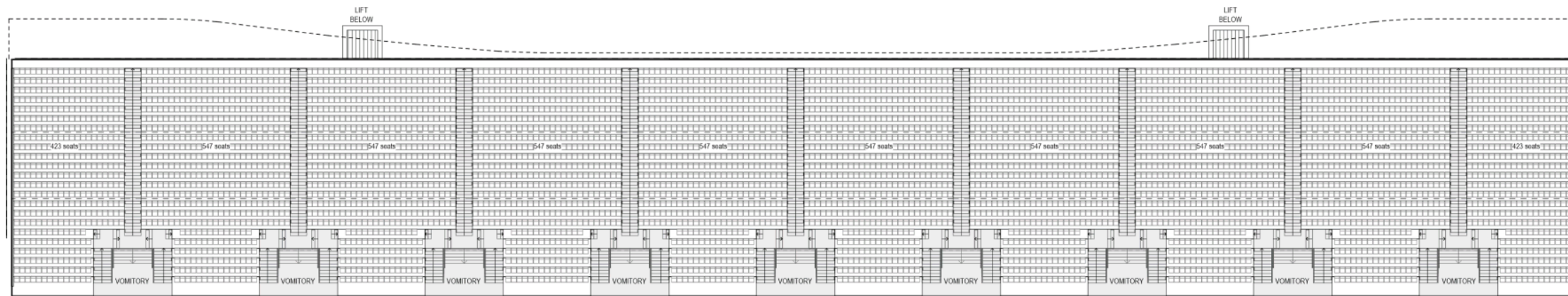
**EAST STAND MAIN CONCOURSE PLAN**

- Circulation
- Commercial / Offices
- Operational
- Player
- Public



[www.sunshinecoast.qld.gov.au](http://www.sunshinecoast.qld.gov.au)  
 07 5475 7272

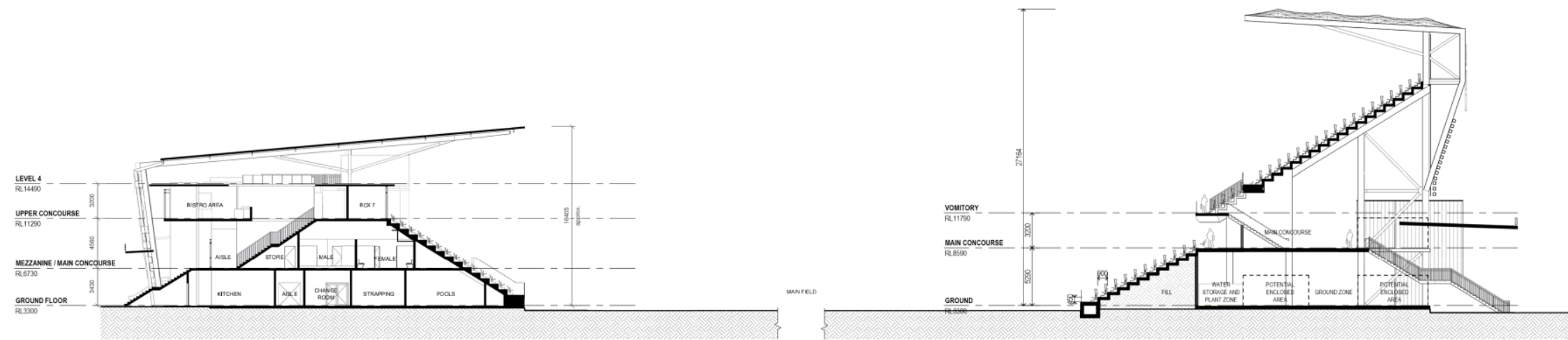




EAST STAND VOMITORY LEVEL PLAN



[www.sunshinecoast.qld.gov.au](http://www.sunshinecoast.qld.gov.au)  
07 5475 7272



**EAST-WEST SITE CROSS SECTION**

Sunshine Coast Stadium



[www.sunshinecoast.qld.gov.au](http://www.sunshinecoast.qld.gov.au)  
07 5475 7272

