





Project number: H3747

Brisbane Road Upgrade

Stages 2 and 3

Mooloolaba Transport Corridor Upgrade

 Night works - Asphalt (bitumen) road resurfacing Sunday 21 May to Thursday 25 May evenings (inclusive) 6pm to 6am
All works are subject to weather and construction material/equipment availability Foote Street, Brisbane Road, Walan Street and Hancock Street, Mooloolaba Temporary changes to traffic conditions including property access, on street parking and detours. Traffic control in attendance

Construction overview

Final road resurfacing works are continuing as Stages 2 and 3 of the Brisbane Road Upgrade near completion.

To maintain daytime traffic flow along busy Brisbane Road these works must be undertaken at night. To limit inconvenience to businesses and residents roadworks will be completed in sections.

Two way traffic flow (one lane each way) will be maintained along Brisbane Road on the relevant evenings using the open traffic lanes or via signed detours.

In the case of Foote Street, Walan Street and Hancock Street works, signed detours will be in place.

While pedestrian access to residences and businesses will be maintained, in cases where no alternative access is available, vehicle access to/from adjacent properties will **not be possible** during these works.

On street parking will be temporarily unavailable in the road resurfacing areas.

If your property is affected, a construction notification will be delivered to your letterbox.

Where possible, the construction team will also meet with relevant parties.

Should 24/7 access to your vehicle be required (for example, businesses, shift workers, transportation arrangements for family or friends, travel etc), the project team recommends parking your vehicle **outside of the construction area** to enable guaranteed access.

Bus stops within the road resurfacing zones will not be in operation. Passengers will be redirected to alternative, nearby stops via signage.

Traffic control and detours will be in place.

In cases where driveways and on street parking are temporarily inaccessible, free and metered parking is available on [nearby streets](#) and at the [ParknGo Mooloolaba Central](#) car park. ParknGo rates are \$2.50 for the first hour and a flat rate of \$5 per day.

Please read this notice carefully for details and see the maps on **pages 3 and 4** for the location of these works.

NB: These works are heavily weather dependent. In the case of rain, works will be postponed.

All information contained in this communication is accurate at the time of distribution however works and dates are subject to change due to circumstances outside of Sunshine Coast Council's control.

Road resurfacing (asphalt) program

Vehicle access to properties in the asphalt areas will **not be available** on the nights nominated. Vehicle access will be available during the day.

While the asphalt program is planned as below, it may be subject to change (due to weather, equipment or materials availability). In the case of any changes the project team will provide updated information. Please check your letterbox on each day of the works.

Sunday 21 May, 6pm to 6am, Foote Street, Mooloolaba

Detours will be operating

Monday 22 May, 6pm to 6am, Brisbane Road Southbound - from Walan Street intersection to new Mayes Canal Bridge

One traffic lane each way operating

Tuesday 22 May, 6pm to 6am, Brisbane Road Northbound - from new Mayes Canal Bridge to Walan Street intersection

One traffic lane each way operating

Wednesday 24 May, 6pm to 6am, Walan Street and Hancock Streets, Mooloolaba

No vehicle access through the worksite.

Detours will be operating

Thursday 25 May, 6pm to 6am, Foote Street

Detours will be operating

What to expect during these works?

The construction team will make every effort to minimise impacts to the community however nearby residents and businesses can expect intermittent construction noise including the operation of heavy machinery and large vehicles.

For residents sensitive to the smell of asphalt, please consider closing blinds and windows and using fans or air conditioning where possible.

Please allow an extra 10 minutes of travel time when travelling to destinations in/near the construction zone.

We thank our community for your ongoing patience and understanding.

Register for project updates and/or contact the project team

To register for construction updates, email your details to mtcu@sunshinecoast.qld.gov.au

For further information, you can contact the project team on 1800 531 597 (during office hours, Monday to Friday 8.30am – 5pm) or email mtcu@sunshinecoast.qld.gov.au

Figure 1. Night works. Sunday 21 May, 6pm to 6am, Foote Street, Mooloolaba

No vehicle access to properties or on street parking available in the highlighted area

No bus stops operating (passengers will be redirected to nearby stops)

Detours will be operating



Figure 2. Night works. Monday 22 and Tuesday 23 May, 6pm to 6am - from Walan Street intersection to the new Mayes Canal Bridge

Monday 22 May Brisbane Road Southbound (blue section)

Tuesday 23 May Brisbane Road Northbound (yellow section)

One lane of traffic operating each way along Brisbane Road

No vehicle access to properties or on street parking available in the highlighted area

No bus stops operating (passengers will be redirected to nearby stops).

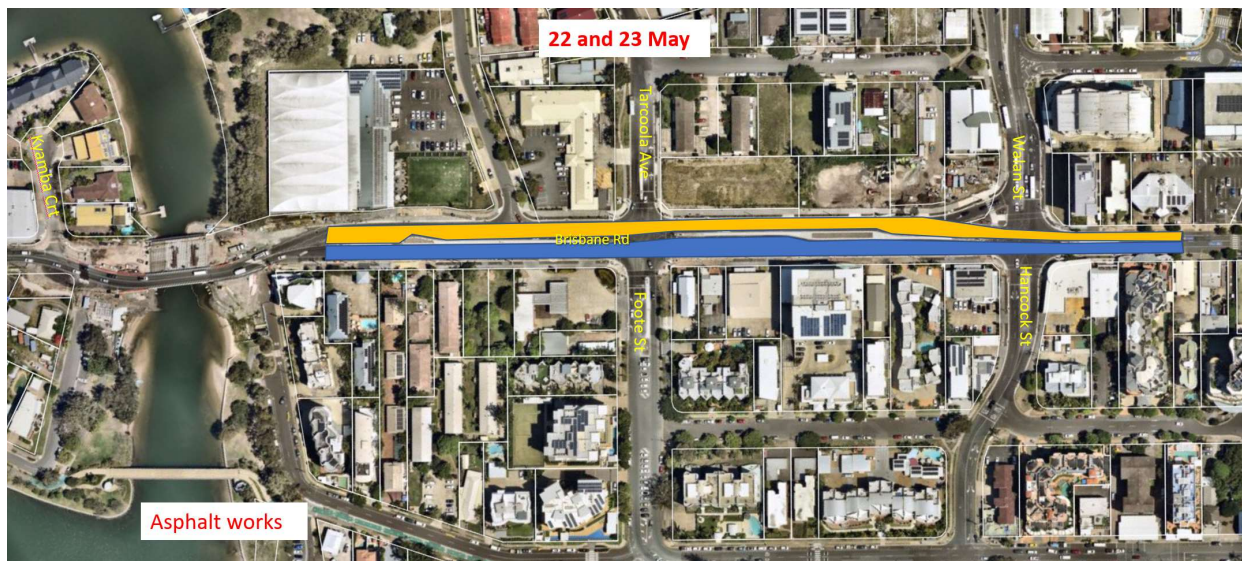


Figure 3. Night works. Wednesday 24 May, 6pm to 6am.

Walan Street and Hancock Street, Mooloolaba

No vehicle access to properties or on street parking available in the highlighted area

No bus stops operating (passengers will be redirected to nearby stops)

Detours will be operating

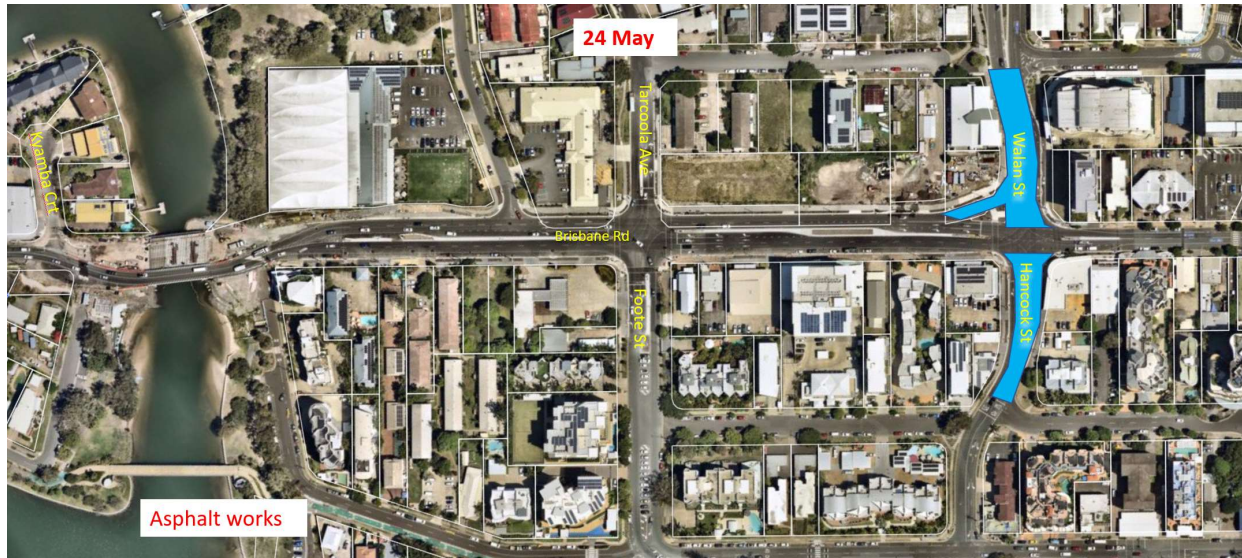


Figure 4. Night works. Thursday 25 May, 6pm to 6am

Foote Street, Mooloolaba

No vehicle access to properties or on street parking available in the highlighted area

No bus stops operating (passengers will be redirected to nearby stops)

Detours will be operating

