



Stockland

**LAKE KAWANA
BIRTINYA
LAKE MANAGEMENT PLAN**

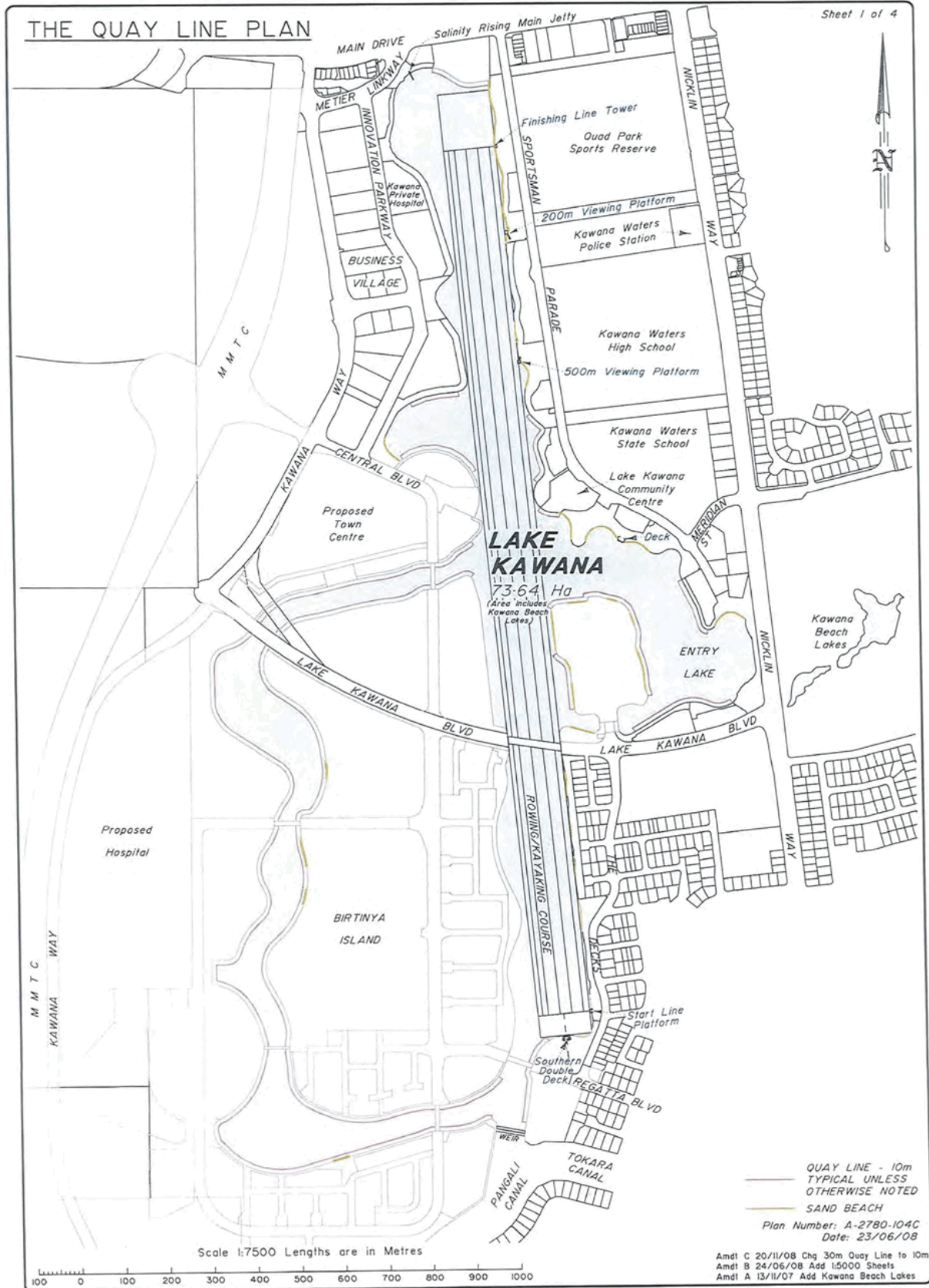


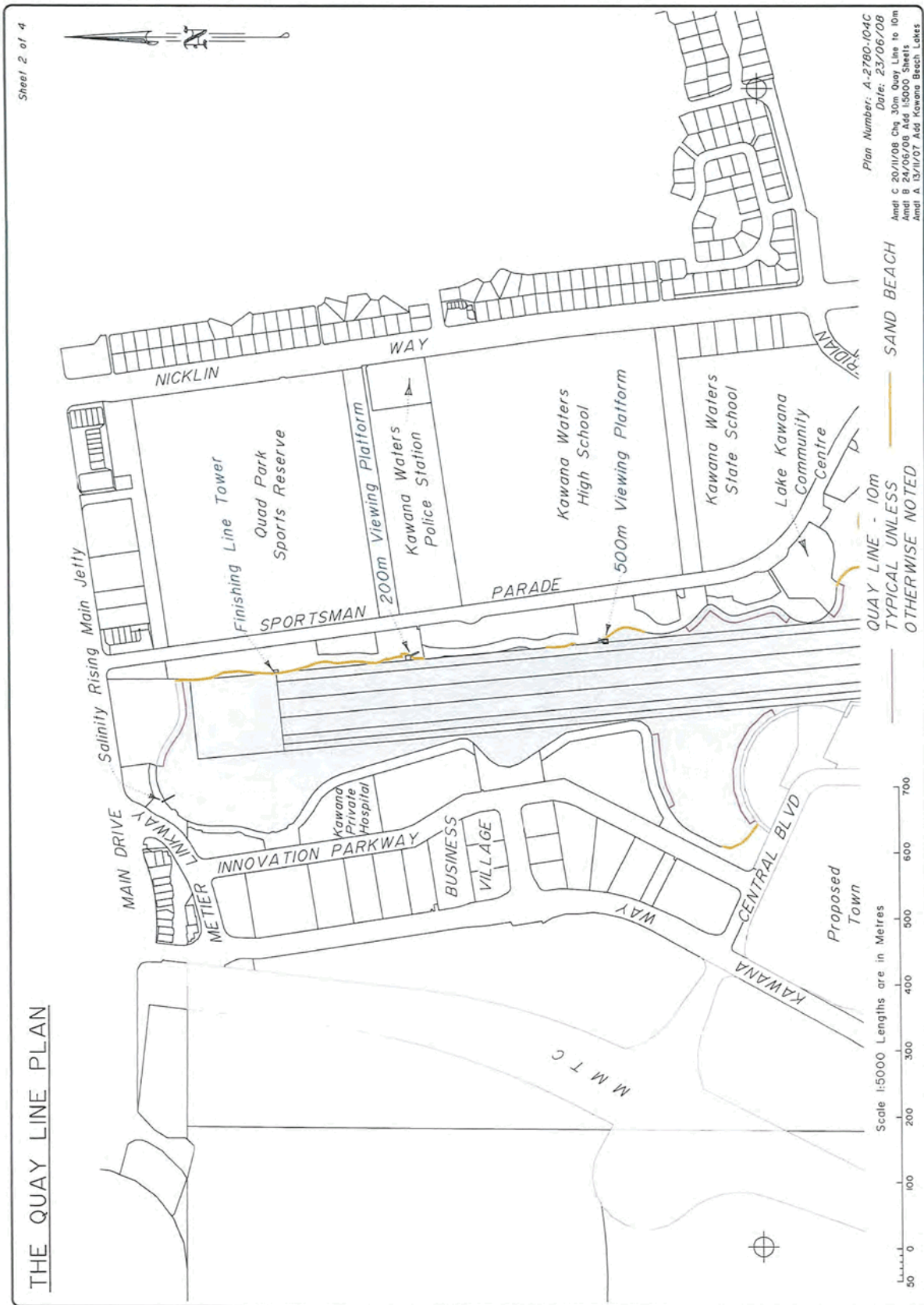
2 October 2008 (Volume 1 of 2) (Council Endorsed Document).

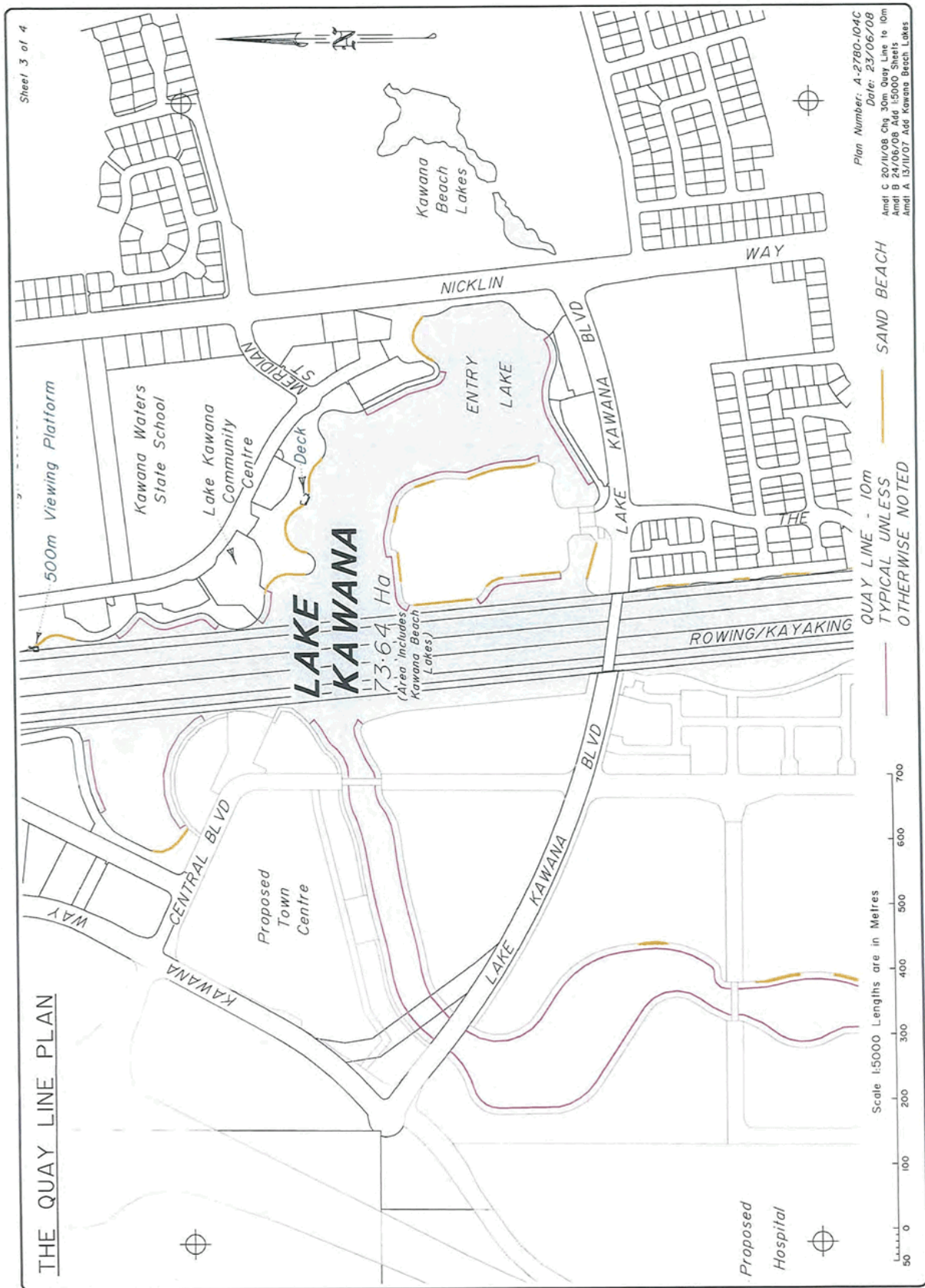
Amended on 2 July 2013 (Platform and Ladder)

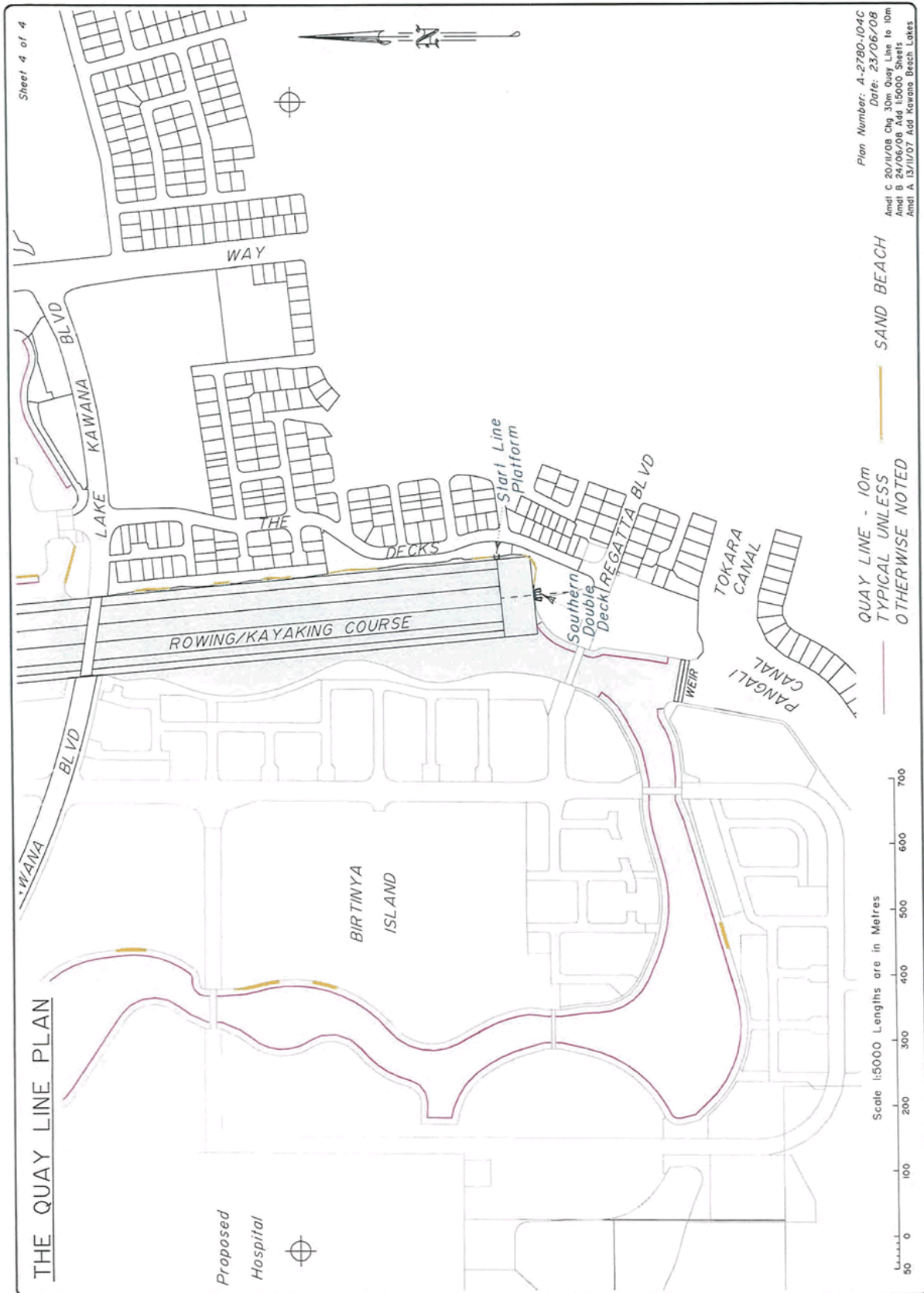
APPENDIX B

QUAY LINE PLAN



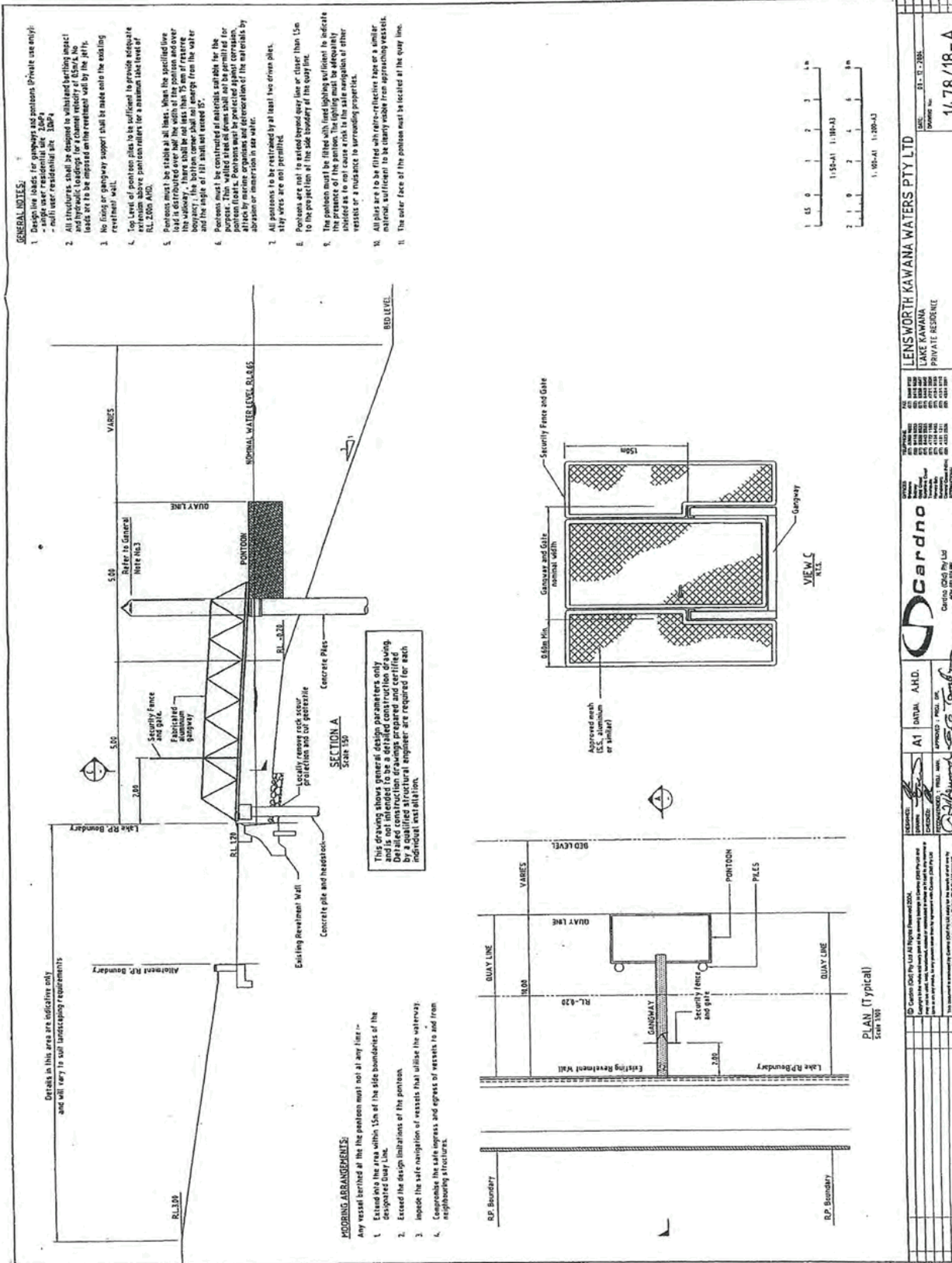


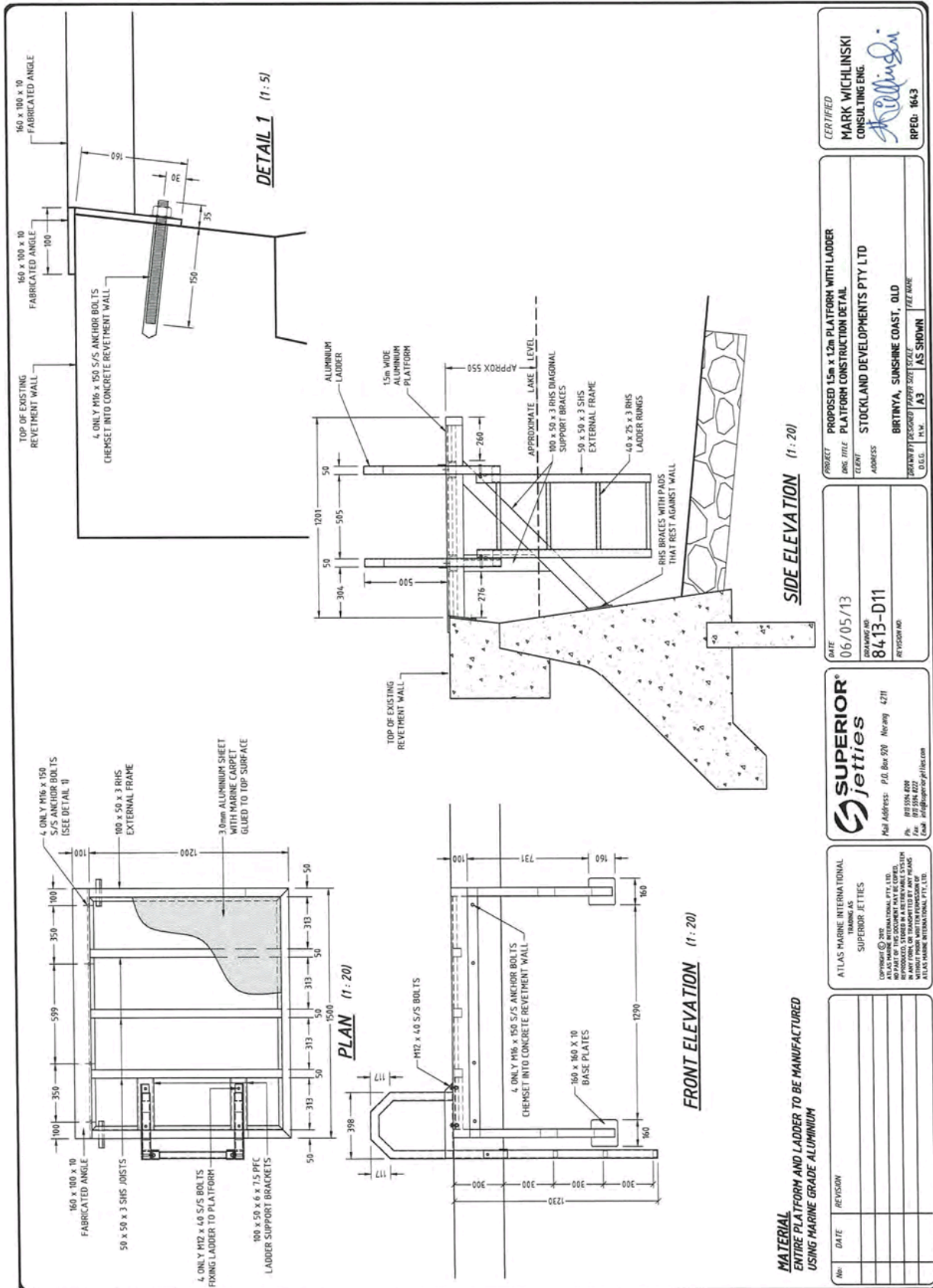




APPENDIX F

PRIVATE PONTOON AND PLATFORM WITH LADDER DETAILS





MATERIAL
 ENTIRE PLATFORM AND LADDER TO BE MANUFACTURED
 USING MARINE GRADE ALUMINIUM

CERTIFIED
MARK WICHLINSKI
 CONSULTING ENG.

 RPEED: 1643

PROJECT: PROPOSED 15m x 12m PLATFORM WITH LADDER
 ENG. TITLE: PLATFORM CONSTRUCTION DETAIL
 CLIENT: STOCKLAND DEVELOPMENTS PTY LTD
 ADDRESS: BIRTINYA, SUNSHINE COAST, QLD
 DRAWN BY: DESIGNED: CHECKED: PAPER SIZE: SCALE: TFEZ: WARE
 D.O.G. N.W. I.A.3 AS SHOWN

DATE: 06/05/13
 DRAWING NO: 8413-D11
 REVISION NO:

SUPERIOR Jetties
 ATLAS MARINE INTERNATIONAL
 TRADING AS
 SUPERIOR JETTIES
 100 SUNSHINE BOOM
 (Cnr. Ingham Road & Hill St)
 Mail Address: P.O. Box 520 Noorway QLD 4271
 Ph: 07 5598 8000
 Fax: 07 5598 8001
 Email: info@superiorjetties.com

ATLAS MARINE INTERNATIONAL
 TRADING AS
 SUPERIOR JETTIES
 COMPANY © 2011 ATLAS MARINE INTERNATIONAL PTY LTD.
 NO PART OF THIS DOCUMENT MAY BE COPIED,
 REPRODUCED, STORED IN A RETRIEVING SYSTEM,
 IN ANY FORM, OR TRANSMITTED BY ANY MEANS,
 WITHOUT THE WRITTEN PERMISSION OF ATLAS MARINE INTERNATIONAL PTY LTD.

No.	DATE	REVISION