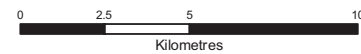


**Legend**

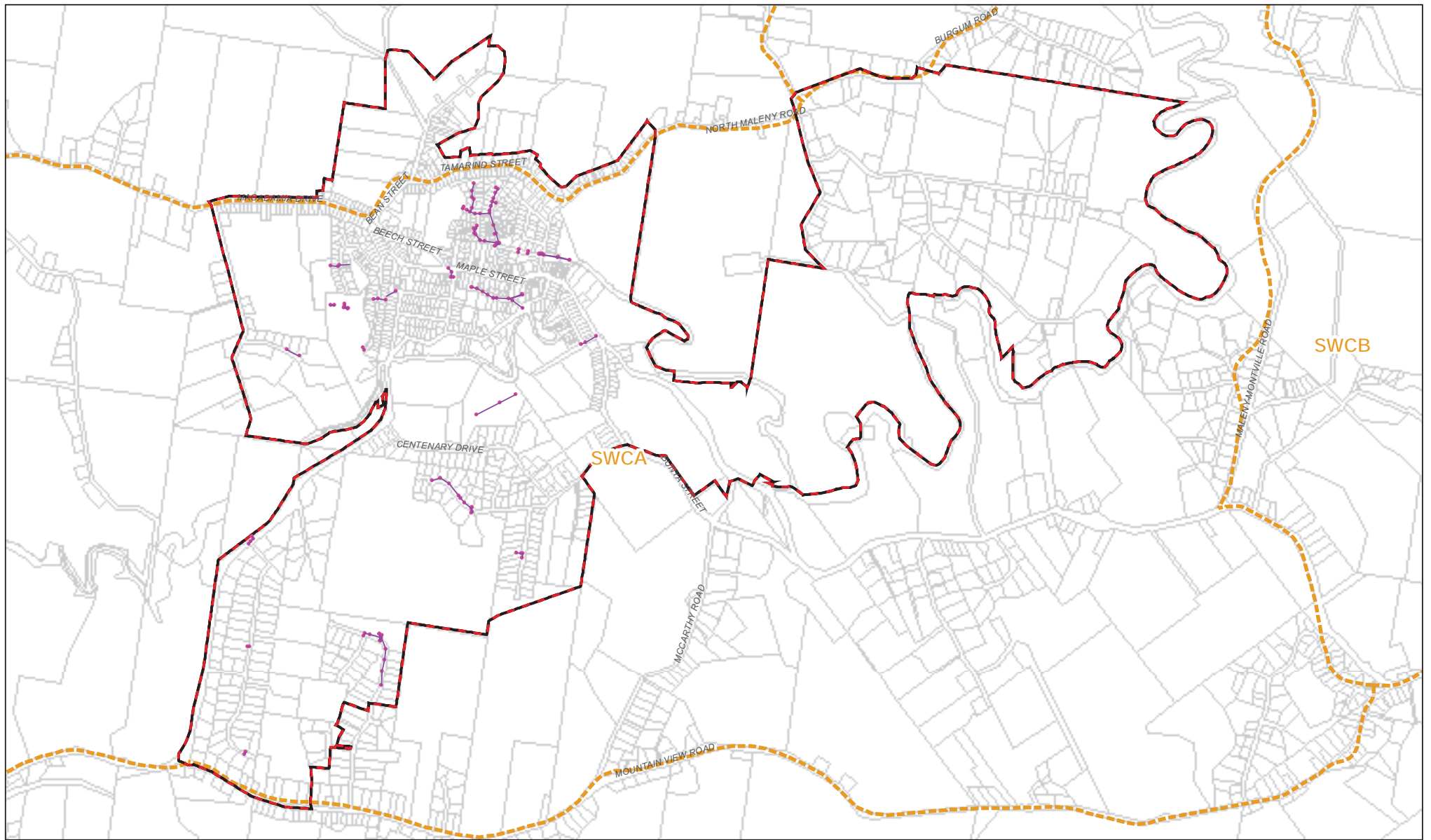
- Stormwater Maps
- PIA Boundary
- Stormwater Catchments
- Property Boundaries

© Sunshine Coast Council 2010  
 While every care is taken to ensure the accuracy of this data, Sunshine Coast Council makes no representations or warranties about its accuracy, reliability, completeness or suitability for any particular purpose and disclaims all responsibility and all liability (including without limitation, liability in negligence) for all expenses, losses, damages (including indirect or consequential damage) and costs which may be incurred as a result of the data being inaccurate or incomplete in any way and for any reason.  
 This map must not be reproduced in any form whole or part without the express written consent of Sunshine Coast Council. Digital Cadastre Database (DCDB) © The State of Queensland (Department of the Environment & Resource Management) [2010]

Existing Stormwater Index



**MAP SWEI**  
 16 September 2013

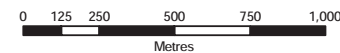


**Legend**

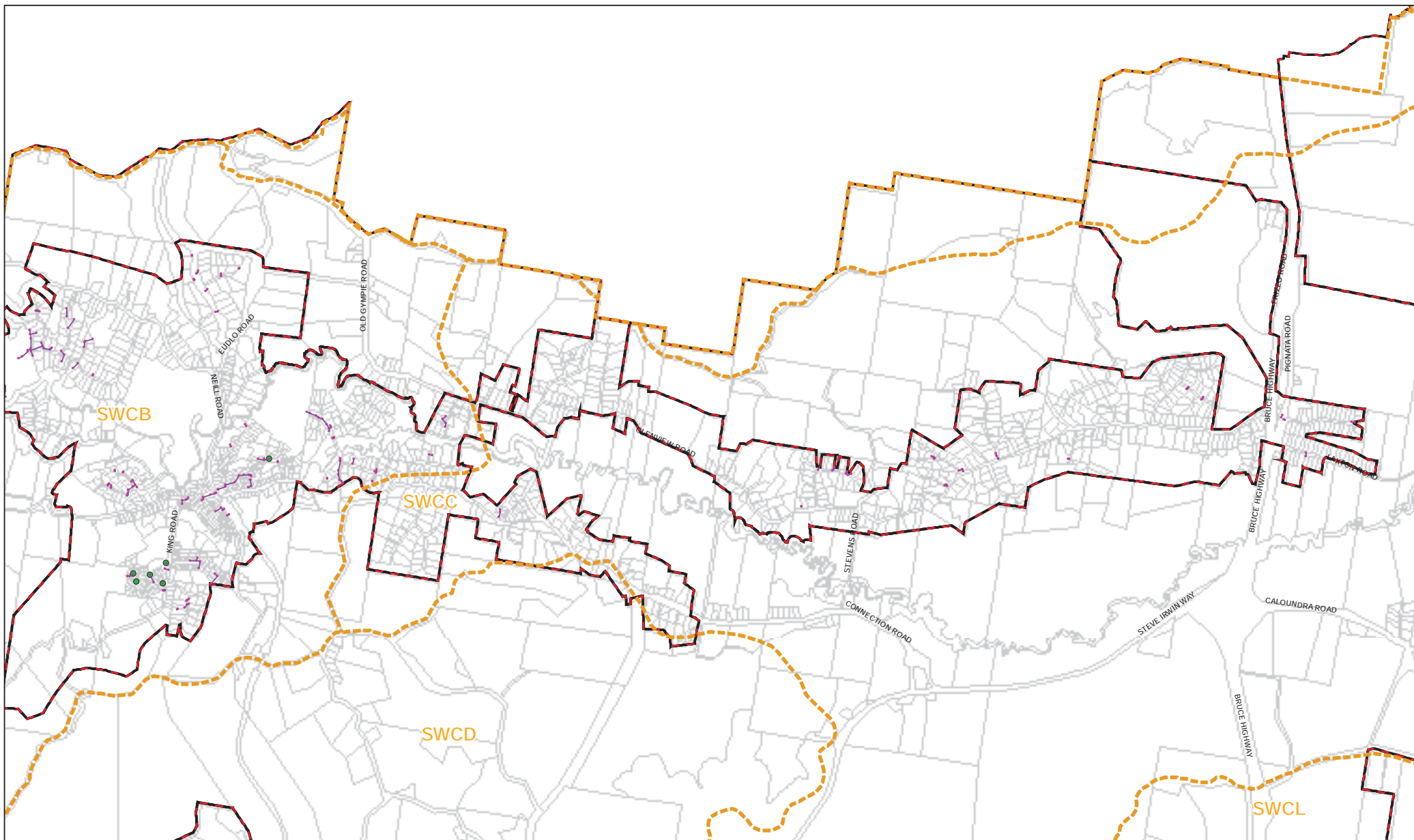
- SQIDs
- Pits, End Treatments, etc
- Open Drain
- Stormwater Pipes
- Basins
- ▭ PIA Boundary
- Stormwater Charge Area
- ▭ Property Boundaries

© Sunshine Coast Council 2010  
 While every care is taken to ensure the accuracy of this data, Sunshine Coast Council makes no representations or warranties about its accuracy, reliability, completeness or suitability for any particular purpose and disclaims all responsibility and all liability (including without limitation, liability in negligence) for all expenses, losses, damages (including indirect or consequential damage) and costs which may be incurred as a result of the data being inaccurate or incomplete in any way and for any reason.  
 This map must not be reproduced in any form whole or part without the express written consent of Sunshine Coast Council. Digital Cadastre Database (DCDB) © The State of Queensland (Department of the Environment & Resource Management) [2010]

**Maleny** | Sunshine Coast Council  
**Existing Stormwater Charge Area**



**MAP SWE1**  
 16 September 2013



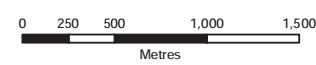
- Legend**
- SQIDs
  - Pits, End Treatments, etc
  - Open Drain
  - Stormwater Pipes
  - Basins
  - PIA Boundary
  - Stormwater Charge Area
  - Property Boundaries

© Sunshine Coast Council 2010  
 While every care is taken to ensure the accuracy of this data, Sunshine Coast Council makes no representations or warranties about its accuracy, reliability, completeness or suitability for any particular purpose and disclaims all responsibility and all liability (including without limitation, liability in negligence) for all expenses, losses, damages (including indirect or consequential damage) and costs which may be incurred as a result of the data being inaccurate or incomplete in any way and for any reason.  
 This map must not be reproduced in any form whole or part without the express written consent of Sunshine Coast Council. Digital Cadastre Database (DCDB) © The State of Queensland (Department of the Environment & Resource Management) [2010]

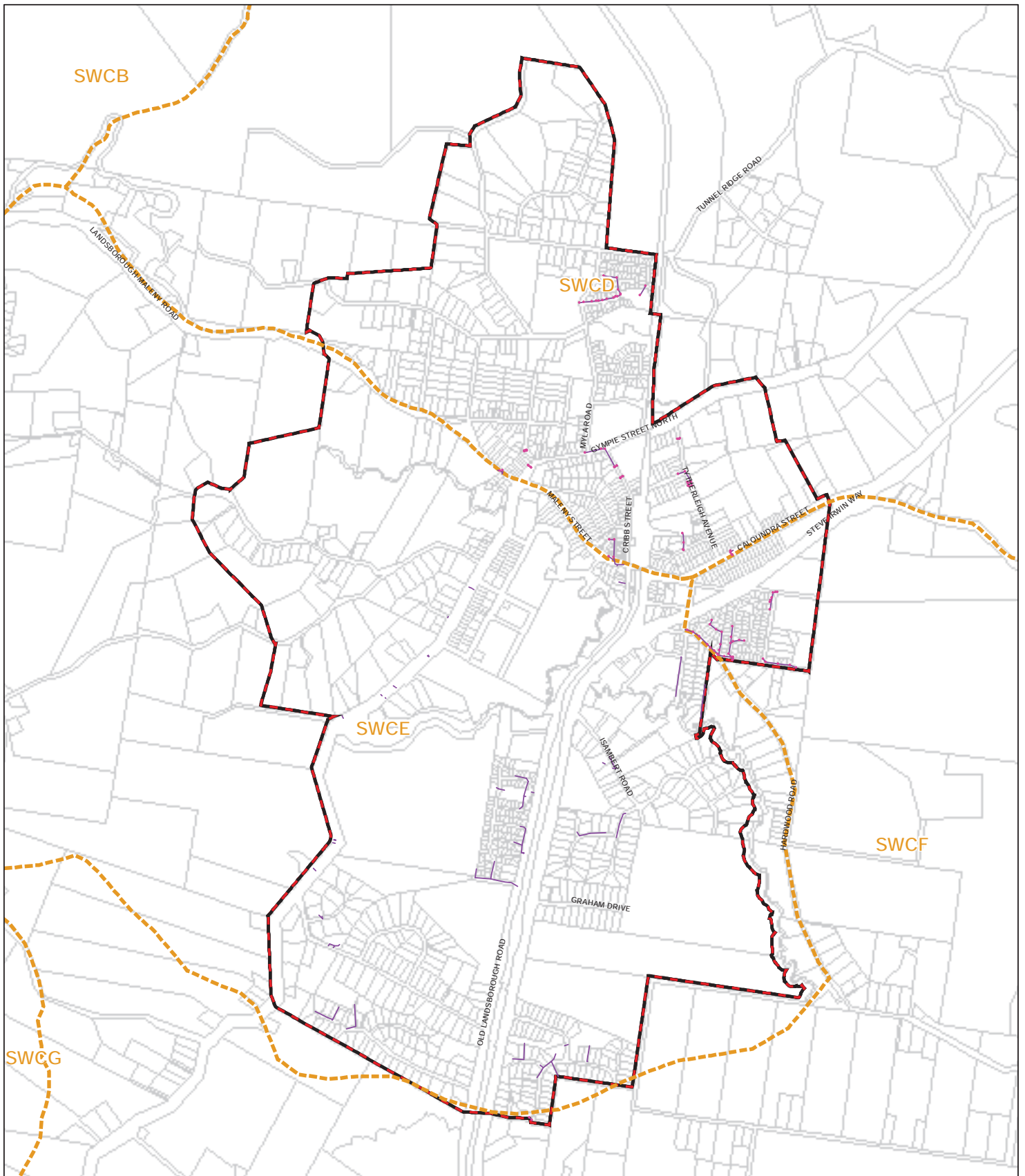
# Mooloolah

## Existing Stormwater Charge Area

**Sunshine Coast Council**



**MAP SWE2**  
 16 September 2013



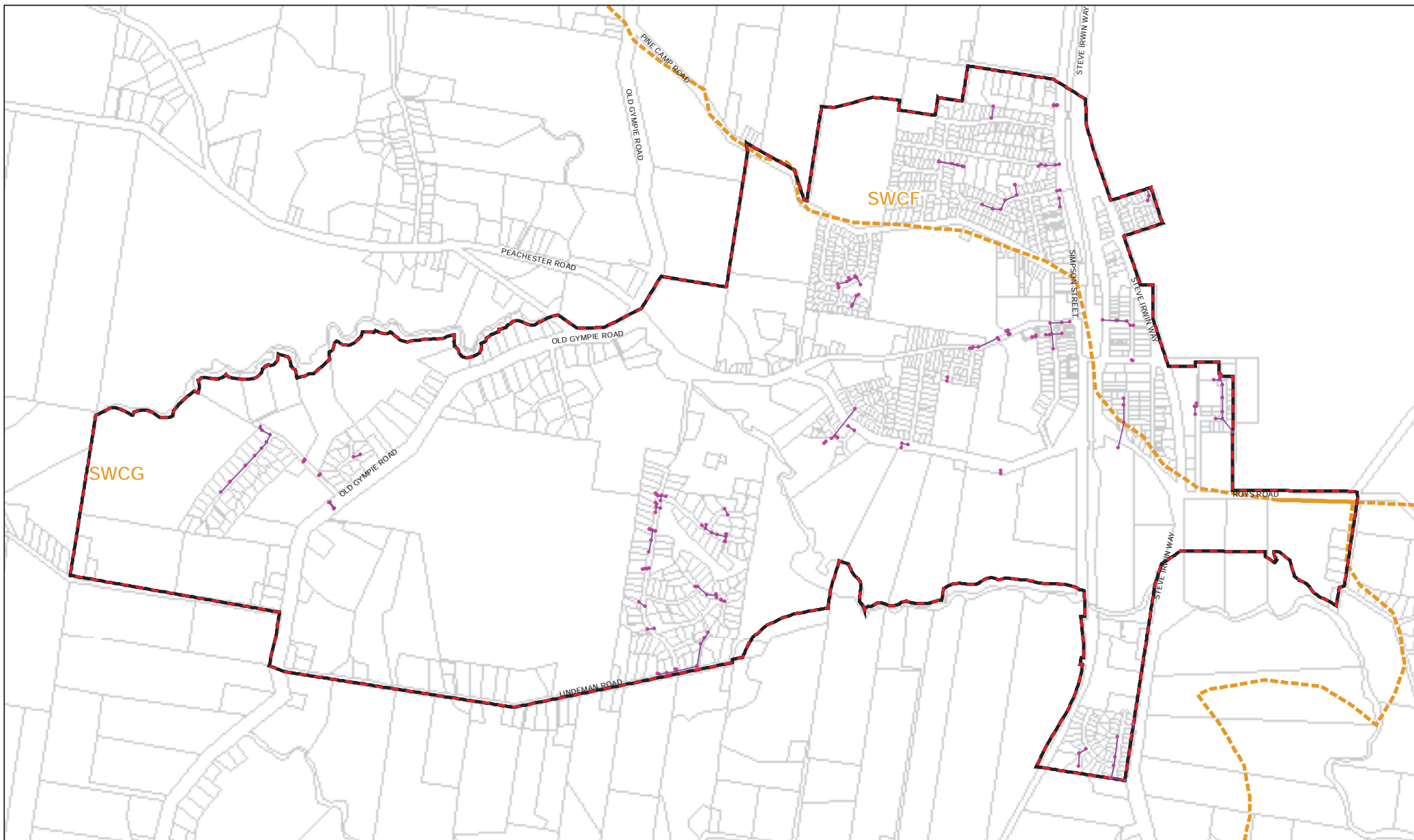
- Legend**
- SQIDs
  - Pits, End Treatments, etc
  - Open Drain
  - Stormwater Pipes
  - Basins
  - ▭ PIA Boundary
  - ▭ Stormwater Charge Area
  - ▭ Property Boundaries

© Sunshine Coast Council 2010  
 While every care is taken to ensure the accuracy of this data, Sunshine Coast Council makes no representations or warranties about its accuracy, reliability, completeness or suitability for any particular purpose and disclaims all responsibility and all liability (including without limitation, liability in negligence) for all expenses, losses, damages (including indirect or consequential damage) and costs which may be incurred as a result of the data being inaccurate or incomplete in any way and for any reason.

**Landsborough** | Sunshine Coast Council  
**Existing Stormwater**  
**Charge Area**

**MAP SWE3**  
 16 September 2013

0    250    500    1,000  
 Metres

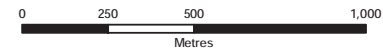


**Legend**

- SQIDs
- Pits, End Treatments, etc
- Open Drain
- Stormwater Pipes
- Basins
- ▭ PIA Boundary
- ▭ Stormwater Charge Area
- ▭ Property Boundaries

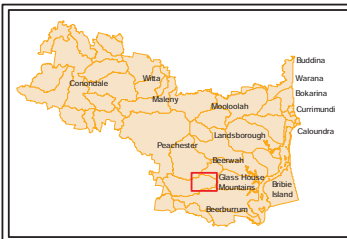
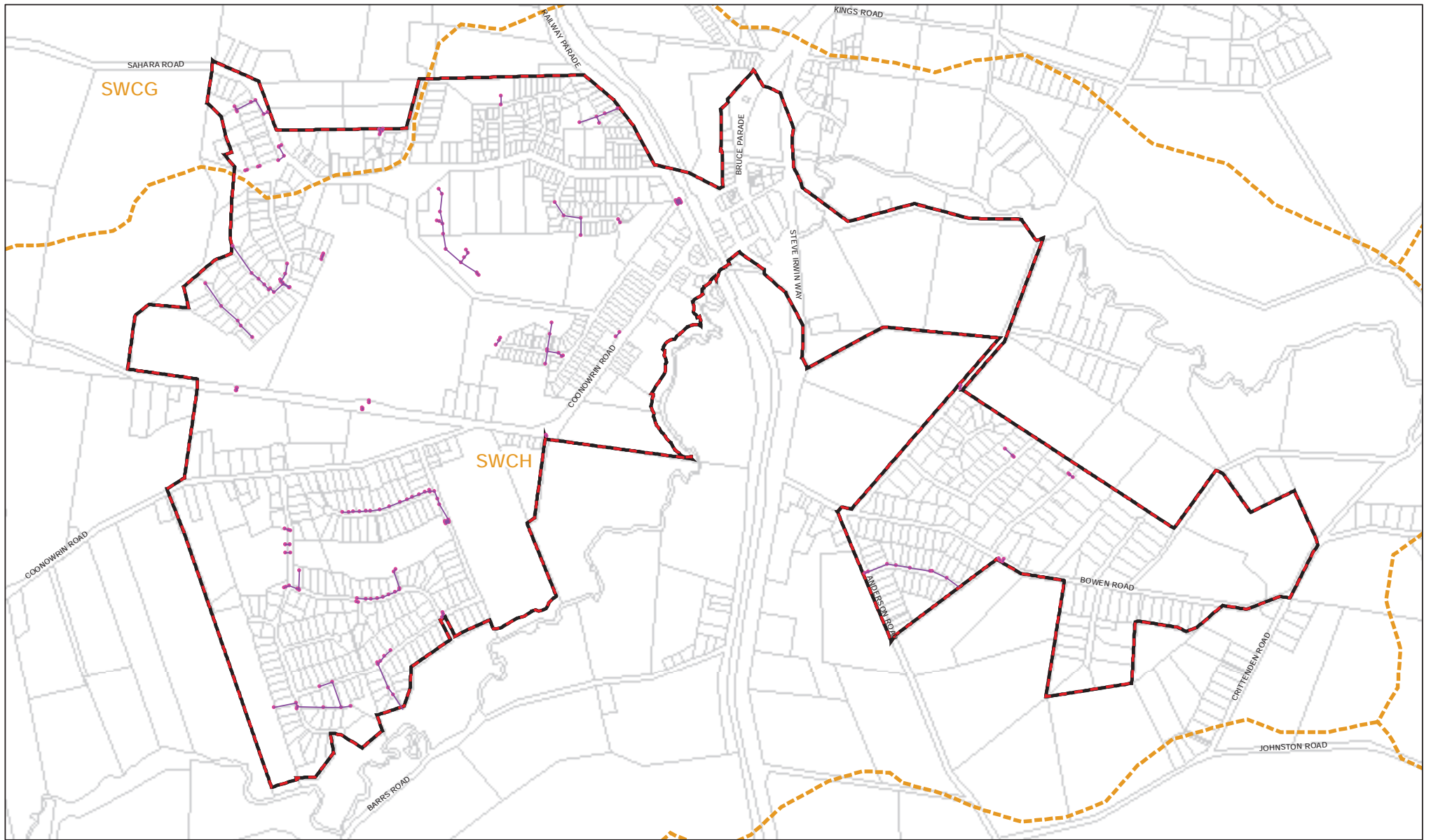
© Sunshine Coast Council 2010  
 While every care is taken to ensure the accuracy of this data, Sunshine Coast Council makes no representations or warranties about its accuracy, reliability, completeness or suitability for any particular purpose and disclaims all responsibility and all liability (including without limitation, liability in negligence) for all expenses, losses, damages (including indirect or consequential damage) and costs which may be incurred as a result of the data being inaccurate or incomplete in any way and for any reason.

**Beerwah** | Sunshine Coast Council  
**Existing Stormwater Charge Area**



N  
**MAP SWE4**  
 16 September 2013

This map must not be reproduced in any form whole or part without the express written consent of Sunshine Coast Council, Digital Cadastre Database (DCDB) © The State of Queensland (Department of the Environment & Resource Management) [2010]



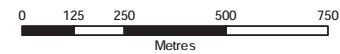
**Legend**

- SQIDs
- Pits, End Treatments, etc
- Open Drain
- Stormwater Pipes
- Basins
- PIA Boundary
- Stormwater Charge Area
- Property Boundaries

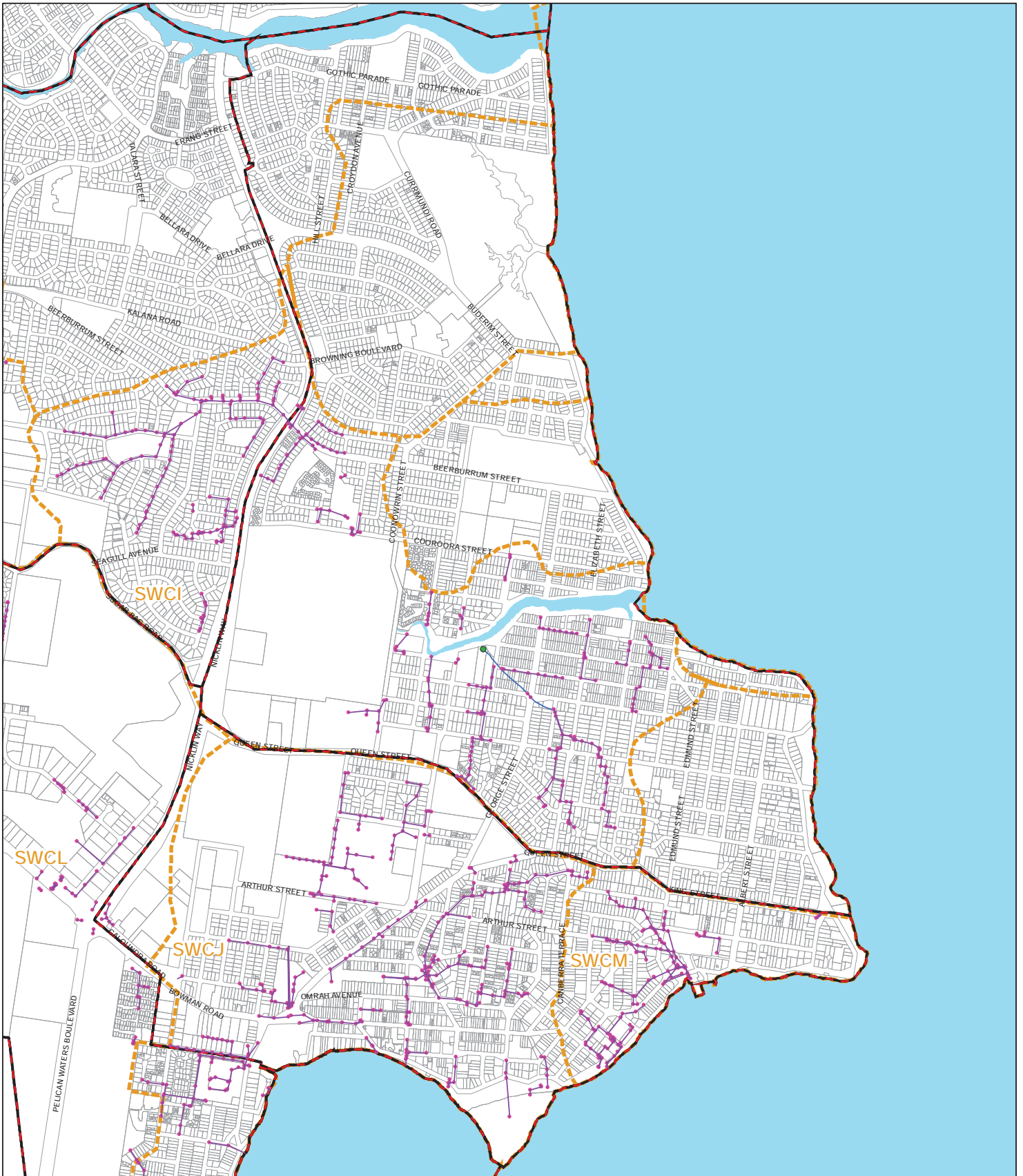
© Sunshine Coast Council 2010  
 While every care is taken to ensure the accuracy of this data, Sunshine Coast Council makes no representations or warranties about its accuracy, reliability, completeness or suitability for any particular purpose and disclaims all responsibility and all liability (including without limitation, liability in negligence) for all expenses, losses, damages (including indirect or consequential damage) and costs which may be incurred as a result of the data being inaccurate or incomplete in any way and for any reason.

This map must not be reproduced in any form whole or part without the express written consent of Sunshine Coast Council. Digital Cadastre Database (DCDB) © The State of Queensland (Department of the Environment & Resource Management) [2010]

## Glass House Mountains Existing Stormwater Charge Area



**MAP SWE5**  
16 September 2013



## Caloundra Central and Eastern Beaches Existing Stormwater Charge Area

Sunshine Coast  
Council

### Legend

- SQIDs
- Pits, End Treatments, etc
- Open Drain
- Stormwater Pipes
- Basins
- PIA Boundary
- Stormwater Charge Area
- Property Boundaries

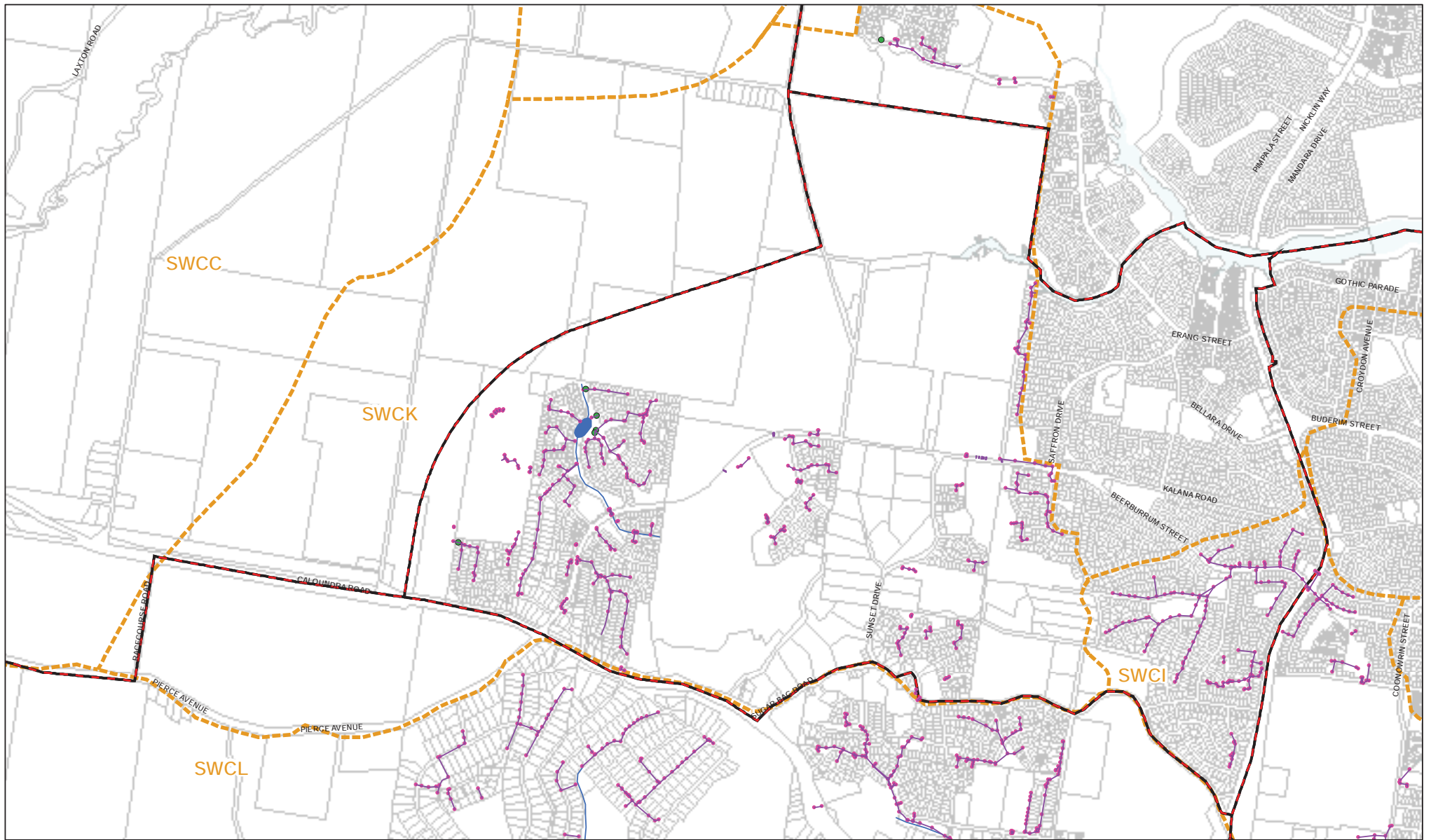
© Sunshine Coast Council 2010

While every care is taken to ensure the accuracy of this data, Sunshine Coast Council makes no representations or warranties about its accuracy, reliability, completeness or suitability for any particular purpose and disclaims all responsibility and all liability (including without limitation, liability in negligence) for all expenses, losses, damages (including indirect or consequential damage) and costs which may be incurred as a result of the data being inaccurate or incomplete in any way and for any reason.

0 250 500 1,000  
Metres



**MAP SWE6**  
16 September 2013



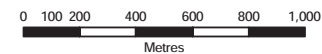
**Legend**

- SQIDs
- Pits, End Treatments, etc
- Open Drain
- Stormwater Pipes
- Basins
- ▭ PIA Boundary
- ▭ Stormwater Charge Area
- ▭ Property Boundaries

© Sunshine Coast Council 2010  
 While every care is taken to ensure the accuracy of this data, Sunshine Coast Council makes no representations or warranties about its accuracy, reliability, completeness or suitability for any particular purpose and disclaims all responsibility and all liability (including without limitation, liability in negligence) for all expenses, losses, damages (including indirect or consequential damage) and costs which may be incurred as a result of the data being inaccurate or incomplete in any way and for any reason.

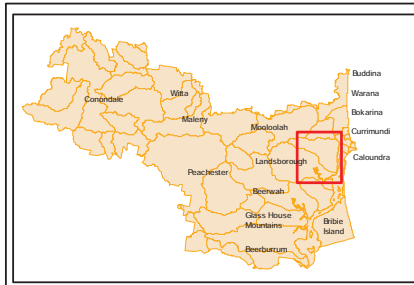
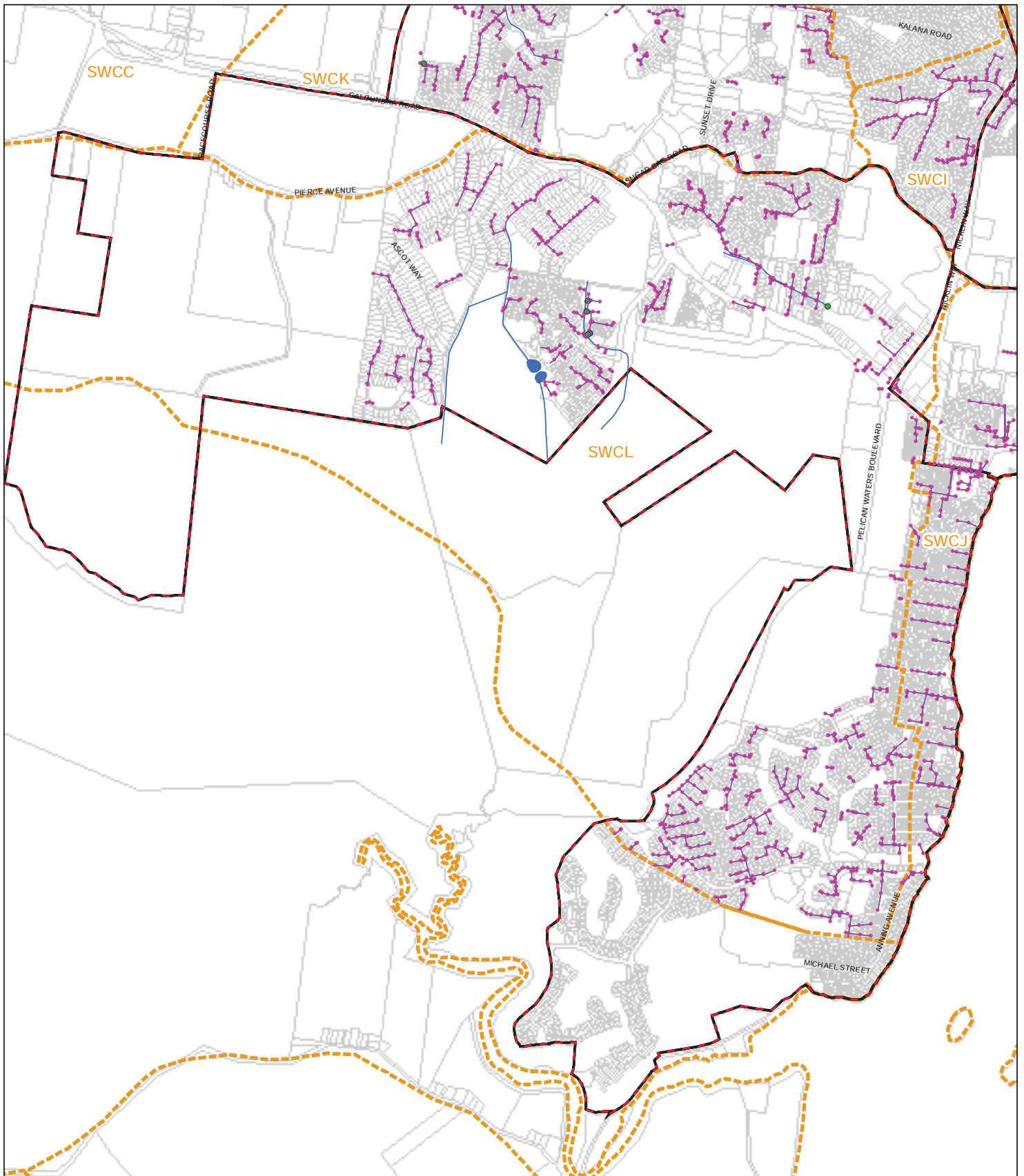
This map must not be reproduced in any form whole or part without the express written consent of Sunshine Coast Council, Digital Cadastre Database (DCDB) © The State of Queensland (Department of the Environment & Resource Management) [2010]

**Caloundra West** | Sunshine Coast Council  
**Existing Stormwater Charge Area**



**MAP SWE7**  
 16 September 2013





- Legend**
- SQIDs
  - Pits, End Treatments, etc
  - Open Drain
  - Stormwater Pipes
  - Basins
  - ▭ PIA Boundary
  - ▭ Stormwater Charge Area
  - ▭ Property Boundaries

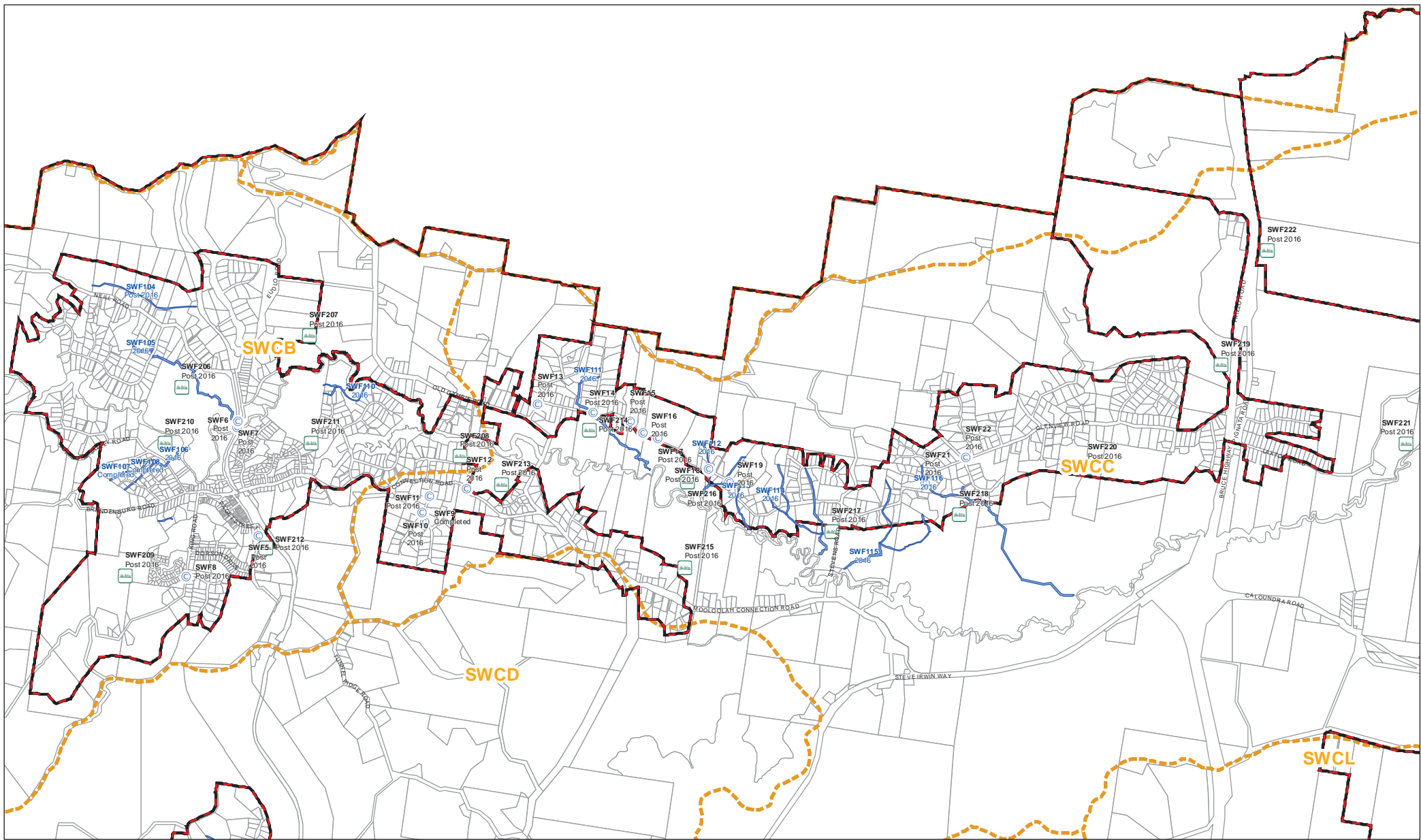
## Caloundra South Existing Stormwater Charge Area

Sunshine Coast  
Council

© Sunshine Coast Council 2010  
While every care is taken to ensure the accuracy of this data, Sunshine Coast Council makes no representations or warranties about its accuracy, reliability, completeness or suitability for any particular purpose and disclaims all responsibility and all liability (including without limitation, liability in negligence) for all expenses, losses, damages (including indirect or consequential damage) and costs which may be incurred as a result of the data being inaccurate or incomplete in any way and for any reason.



**MAP SWE8**  
16 September 2013



**Legend**

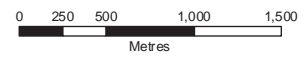
- SQIDs
- Detention Basin
- Wetland Construction
- Channel Works
- Natural Channels
- Detention Basin
- Stormwater Pipes
- Channel Works
- Natural Channels
- Detention Basin
- Stormwater Pipes
- Channel Works
- Natural Channels
- Detention Basin
- Stormwater Pipes

**Mooloolah Future Stormwater Charge Area**

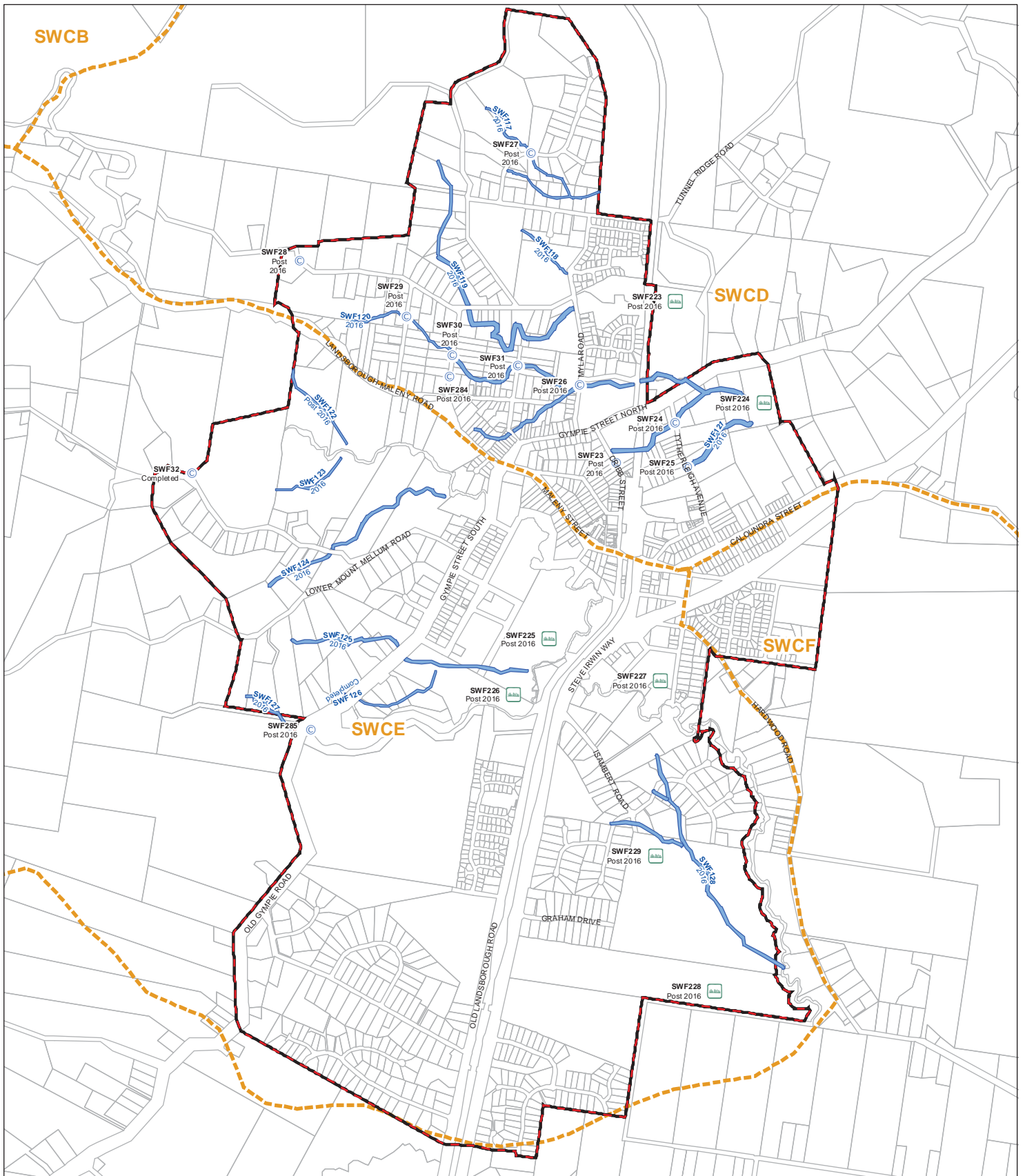
- PIA Boundary
- Stormwater Charge Area
- Property Boundaries
- ICS id / Year

Sunshine Coast Council

© Sunshine Coast Council 2010  
 While every care is taken to ensure the accuracy of this data, Sunshine Coast Council makes no representations or warranties about its accuracy, reliability, completeness or suitability for any particular purpose and disclaims all responsibility and all liability (including without limitation, liability in negligence) for all expenses, losses, damages (including indirect or consequential damage) and costs which may be incurred as a result of the data being inaccurate or incomplete in any way, and for any reason.  
 This map must not be reproduced in any form whole or part without the express written consent of Sunshine Coast Council, Digital Cadastre Database (DCDB) © The State of Queensland (Department of the Environment & Resource Management) [2010]



**MAP SWFU2**  
 16 September 2013



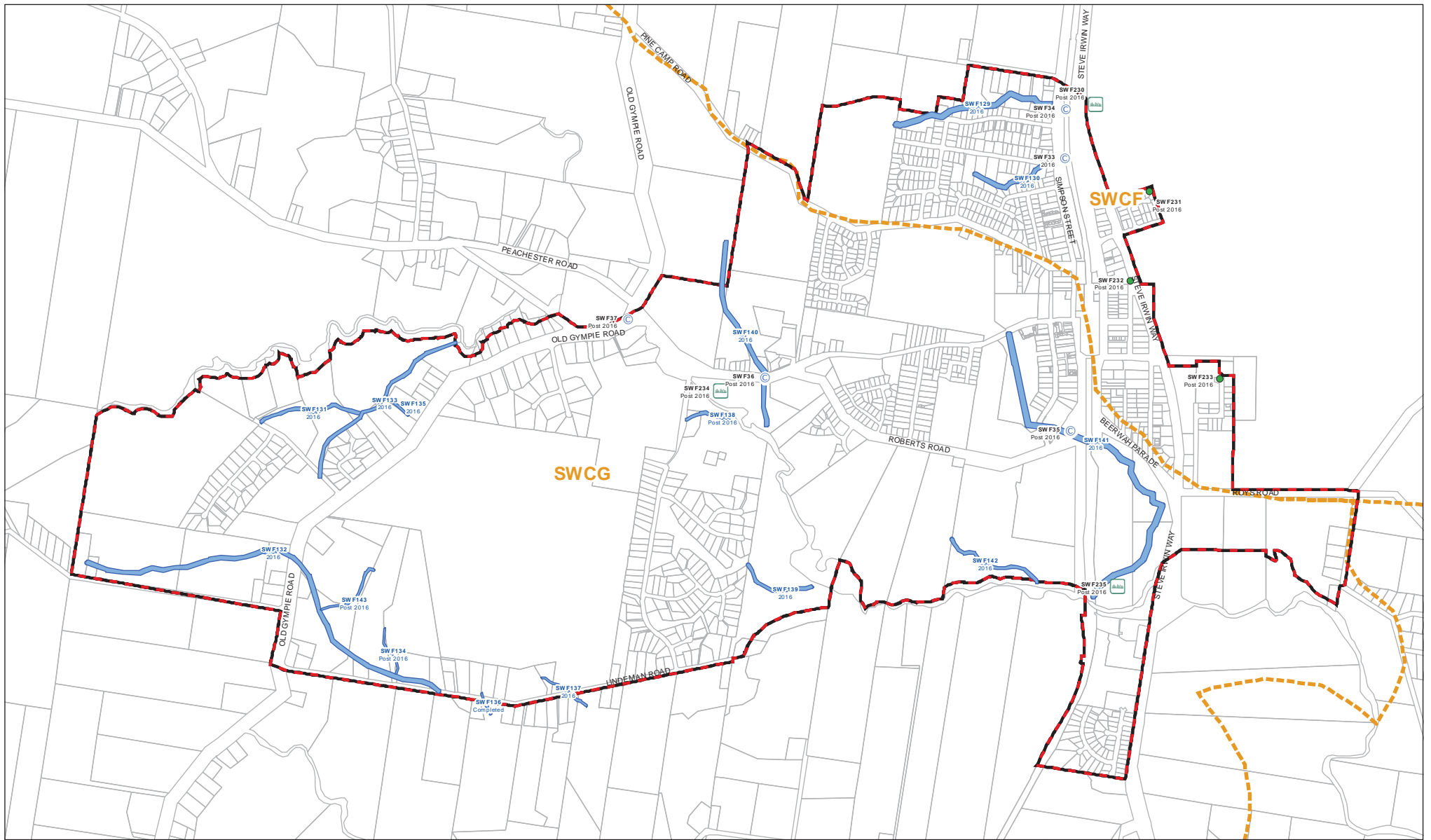
# Landsborough Future Stormwater Charge Area Sunshine Coast Council

- Legend**
- SODs
  - Detention Basin
  - Channel Works
  - Detention Basin
  - Culvert Upgrade
  - Stormwater Pipes
  - Wetland Construction
  - Channel Works
  - Detention Basin
  - PIA Boundary
  - Stormwater Charge Area
  - Property Boundaries

© Sunshine Coast Council 2010  
 While every care is taken to ensure the accuracy of this data, Sunshine Coast Council makes no representations or warranties about its accuracy, reliability, completeness or suitability for any particular purpose and disclaims all responsibility and all liability (including without limitation, liability in negligence) for all expenses, losses, damages (including indirect or consequential damage) and costs which may be incurred as a result of the data being inaccurate or incomplete in any way and for any reason.



**MAP SWFU3**  
 16 September 2013

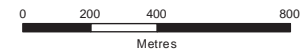


**Legend**

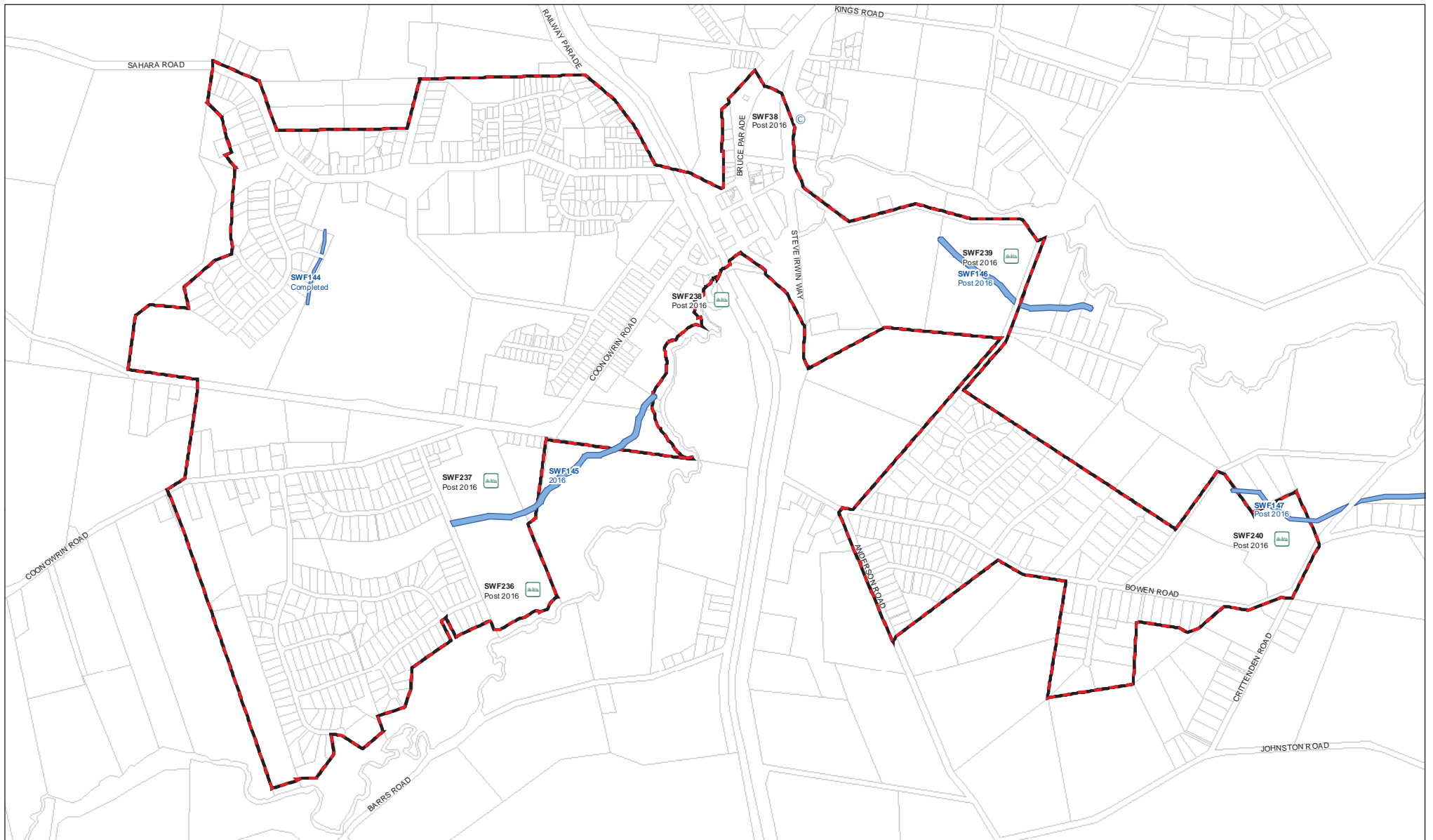
- SQUIDs
- Detention Basin
- SW Wetland Construction
- X Channel works
- C Culvert Upgrade
- Stormwater Pipes
- Channel Works
- Natural Channels
- Detention Basin
- ICS id / Year
- PIA Boundary
- Stormwater Charge Area
- Property Boundaries

**Beerwah Future Stormwater Charge Area**

Sunshine Coast Council



**MAP SWFU4**  
16 September 2013



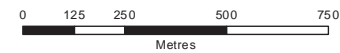
**Legend**

- |       |                 |                      |               |                  |                 |                  |              |                        |                     |
|-------|-----------------|----------------------|---------------|------------------|-----------------|------------------|--------------|------------------------|---------------------|
| SQIDs | Detention Basin | Wetland Construction | Channel Works | Natural Channels | Culvert Upgrade | Stormwater Pipes | PIA Boundary | Stormwater Charge Area | Property Boundaries |
| SQIDs | Detention Basin | Wetland Construction | Channel Works | Natural Channels | Culvert Upgrade | Stormwater Pipes | PIA Boundary | Stormwater Charge Area | Property Boundaries |

© Sunshine Coast Council 2010  
 While every care is taken to ensure the accuracy of this data, Sunshine Coast Council makes no representations or warranties about its accuracy, reliability, completeness or suitability for any particular purpose and disclaims all responsibility and all liability (including without limitation, liability in negligence) for all expenses, losses, damages (including indirect or consequential damage) and costs which may be incurred as a result of the data being inaccurate or incomplete in any way and for any reason.

This map must not be reproduced in any form whole or part without the express written consent of Sunshine Coast Council. Digital Cadastre Database (DCDB) © The State of Queensland (Department of the Environment & Resource Management) [2010]

Glass House Mountains  
 Existing Stormwater Charge Area



**MAP SWFU5**  
 16 September 2013



## Caloundra Central and Eastern Beaches Future Stormwater Charge Area

Sunshine Coast Council

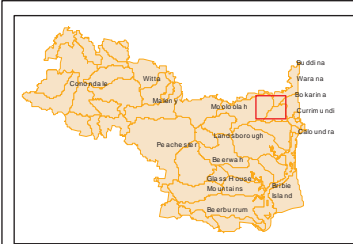
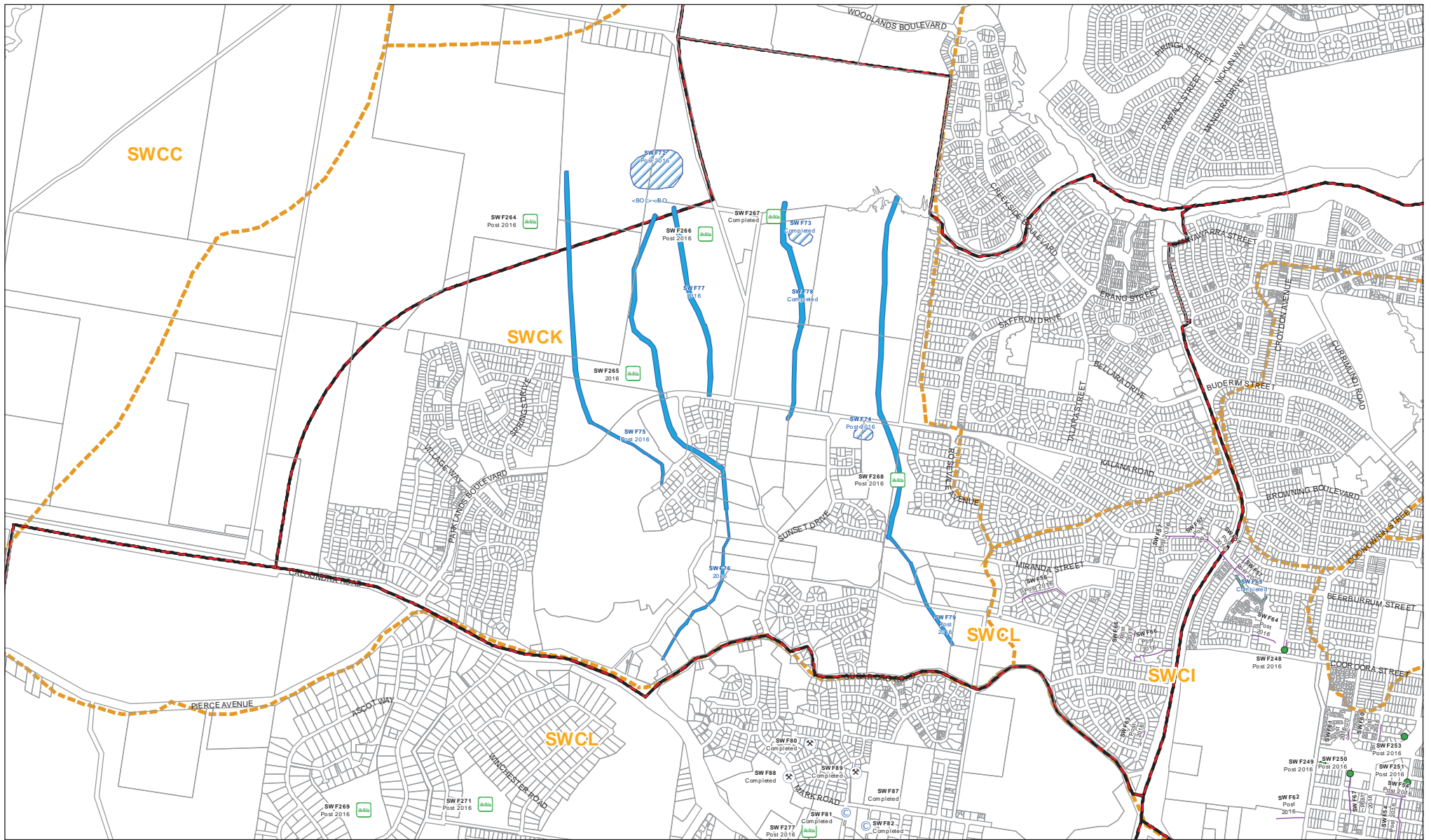
- Legend**
- SQIDs
  - ⊗ Channel works
  - ▬ Channel Works
  - ▬ PIA Boundary
  - Detention Basin
  - ⊙ Culvert Upgrade
  - ▬ Natural Channels
  - ▬ Stormwater Charge Area
  - ▬ Wetland Construction
  - ▬ Stormwater Pipes
  - ▬ Detention Basin
  - ▬ Property Boundaries

© Sunshine Coast Council 2010  
 While every care is taken to ensure the accuracy of this data, Sunshine Coast Council makes no representations or warranties about its accuracy, reliability, completeness or suitability for any particular purpose and disclaims all responsibility and all liability (including without limitation, liability in negligence) for all expenses, losses, damages (including indirect or consequential damage) and costs which may be incurred as a result of the data being inaccurate or incomplete in any way and for any reason.



**MAP SWFU6**  
16 September 2013

This map may not be reproduced in any form whole or part without the express written consent of Sunshine Coast Council, Digital Cadastre Database (DCDB) © The State of Queensland (Department of the Environment & Resource Management) [2010]



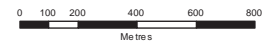
**Legend**

- SIDs
- Wetland Construction
- Channel works
- Culvert Upgrade
- Channel Works
- Natural Channels
- Detention Basin
- Stormwater Pipes
- Property Boundaries
- PIA Boundary
- Stormwater Charge Area

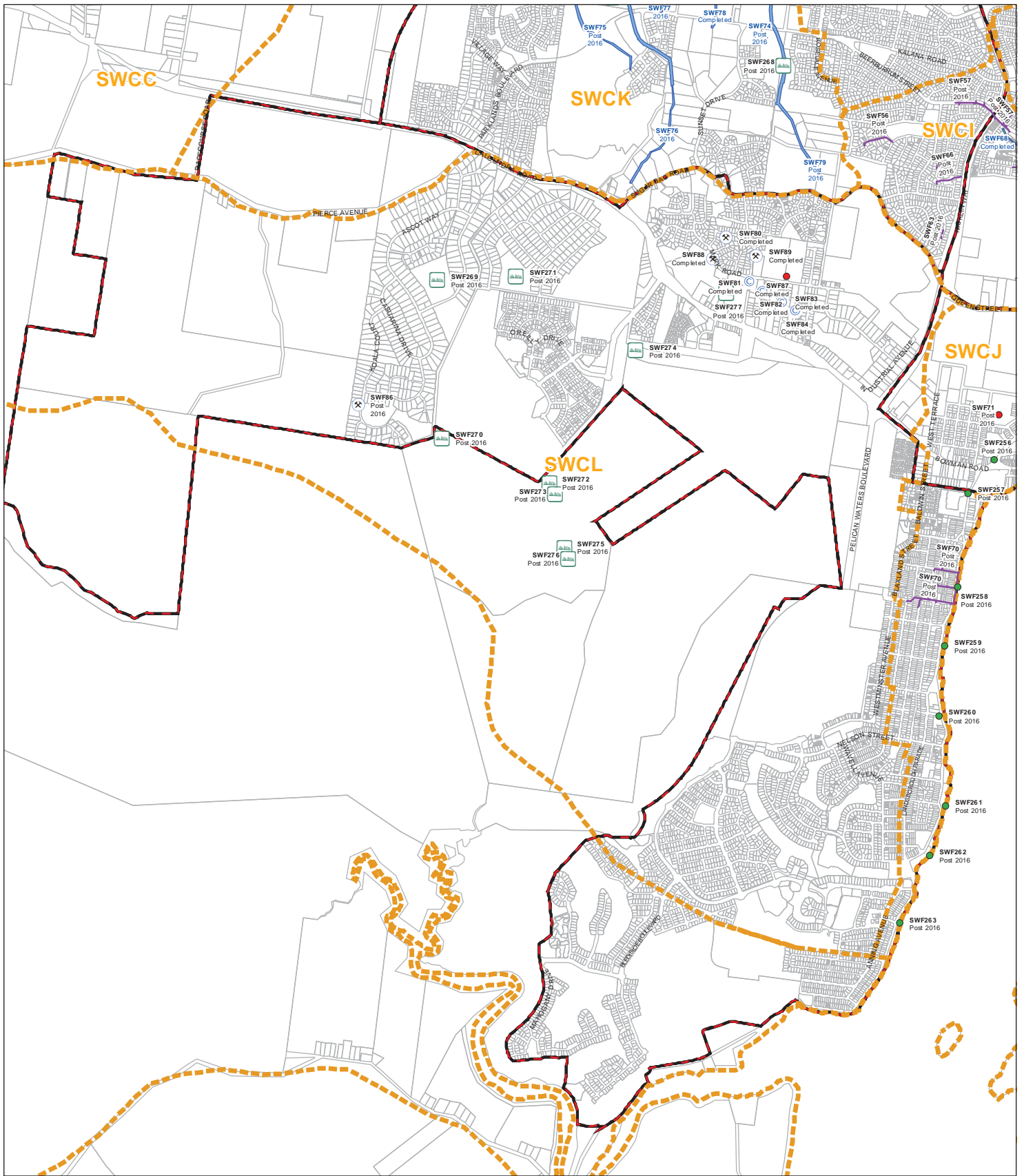
© Sunshine Coast Council 2010  
 While every care is taken to ensure the accuracy of this data, Sunshine Coast Council makes no representations or warranties about its accuracy, reliability, completeness or suitability for any particular purpose and disclaims all responsibility and all liability (including without limitation, liability in negligence) for all expenses, losses, damages (including indirect consequential damage) and costs which may be incurred as a result of the data being inaccurate or incomplete in any way and for any reason.

This map must not be reproduced in any form whole or part without the express written consent of Sunshine Coast Council. Digital Cadastre Database (DCDB) © The State of Queensland (Department of the Environment & Resource Management) [2010]

**Caloundra West**  
**Future Stormwater**  
**Charge Area**  
 Sunshine Coast Council



**MAP SWFU7**  
 16 September 2013



## Caloundra South Future Stormwater Charge Area

**Sunshine Coast Council**

<b>Legend</b>	SIDs	Channel works	Channel Works	PIA Boundary
Detention Basin	Culvert Upgrade	Natural Channels	Detention Basin	Property Boundaries
Wetland Construction	Stormwater Pipes	Stormwater Charge Areas	ICS id / Year	

© Sunshine Coast Council 2010  
 While every care is taken to ensure the accuracy of this data, Sunshine Coast Council makes no representations or warranties about its accuracy, reliability, completeness or suitability for any particular purpose and disclaims all responsibility and all liability (including without limitation, liability in negligence) for all expenses, losses, damages (including indirect or consequential damage) and costs which may be incurred as a result of the data being inaccurate or incomplete in any way and for any reason.



**MAP SWFU8**  
 16 September 2013