

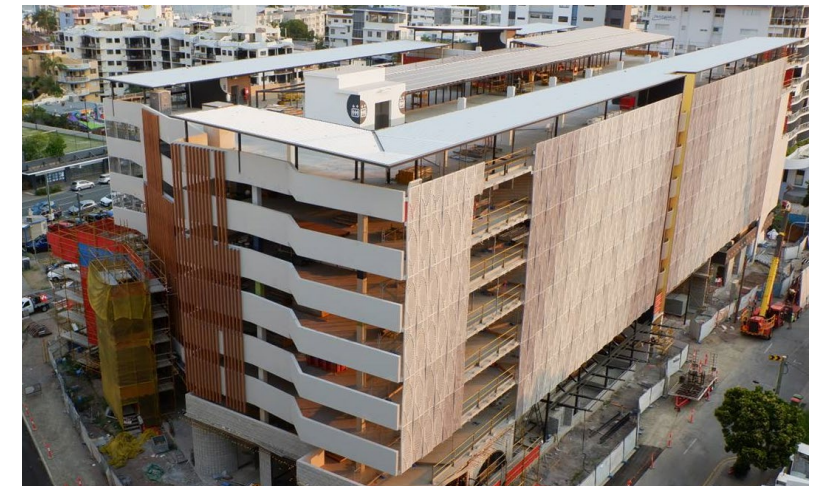


Mooloolaba Local Area and Maroochydore City Centre Parking

December 2020 Ordinary Meeting

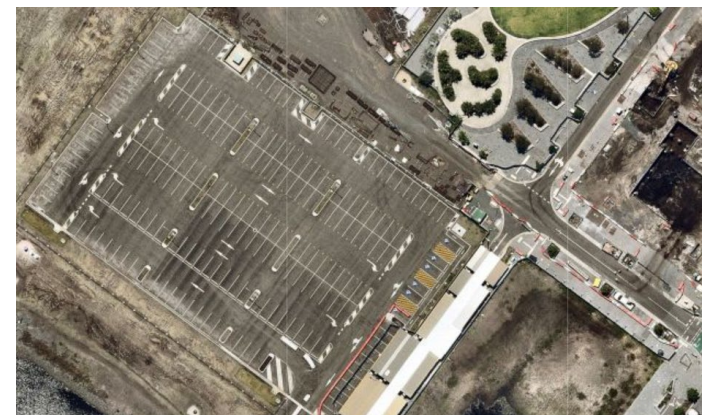
Context - Mooloolaba

- Parking Management Plan and 37 Local Area Parking Plans adopted on 12 October 2017
- Identified central Mooloolaba growing parking demands triggers need for new infrastructure, that needs to be provided in a financially sustainable way
- Key investment in Mooloolaba with first multi-storey parking supply, with future parking demands forecast potential need for up to 1,000 new spaces over for a 20 year horizon
- Car park was also key action in the Mooloolaba Place Making Master Plan adopted in 2015
- Council has been trying to progress a car park proposal on the Brisbane Road site since the 1990s



Context – Maroochydore City Centre

- MCC Car Parking Management Strategy based on a mix of on-site and consolidated off-site car parking facilities that can be managed and adjusted over time
- Temporary Interim at-grade car park is located on undeveloped Lots 11 and 12 located immediately southwest of Foundation Square (Lot M) and the site for the Sunshine Coast City Hall site
- Interim at-grade car park supports parking demands for early tenants of the Maroochydore City Centre prior to a multi-storey car park being delivered.



Mooloolaba LAPP central area

- New multi-storey car park to be known as ParknGo Mooloolaba Central
- ParknGo will offer new parking option, offering parking ease and convenience
- Central Mooloolaba area has high parking demands that need to be managed to ensure availability and turnover

Location	Parking Spaces
ParknGo Mooloolaba Central	703
The Wharf	427
On-street *	280 to 188

* On-street numbers subject to progressive reductions with foreshore masterplan works



ParknGo Mooloolaba Central car park

- Opening to 17 January 2021 will provide 3 hours of free parking
- Interim arrangement allows users to gain familiarity with facility and an extended systems testing period
- Full fees to be introduced from 18 January 2021
- On-street parking to remain free but time limits to be adjusted

Parking Duration	Fees	
	To 17 January 2021	After 18 January 2021
0 to 1 hr	Free	\$2.50
1 to 2 hrs		\$5.00
2 to 3 hrs		\$7.50
3 to 4 hrs		\$10.00
4+ hrs	\$10.00/exit fee (per day)	\$12.50/day
Early Bird (weekdays enter before 8:30am leave between 2:30pm & 6pm)		\$6.00
Night time (enter from 5pm & exit before midnight)		\$5.00
Overnight parking (enter from 5pm exit before 9am next day)		\$10.00
Monthly (unreserved)		\$100

Extent of Mooloolaba Parking Changes

- A. Temporary Mooloolaba Beach car park supply to be removed for foreshore project
- B. Beach Terrace: 96 space change from 3P to 2P
- C. Parking on Esplanade from 2P to 1P, and in Club Lane from unrestricted to 2P
- D. Parking on Brisbane Road and Smith Street will change from 2P to 1P

Parking performance across precinct will be monitored and findings will be presented back to Council.



MCC at-grade car park

- Temporary car park is complete with application fees to apply from 18 January 2020
- Portion of car park in licensed fee area for early tenants (on annual fee basis) but remainder available as public parking

**Maroochydore City Centre
at-grade off-street car park**

**\$2.00/hr capped at \$6/day
Monday to Friday
Free on weekends**



Thank you.

See council's website for further details
www.sunshinecoast.qld.gov.au