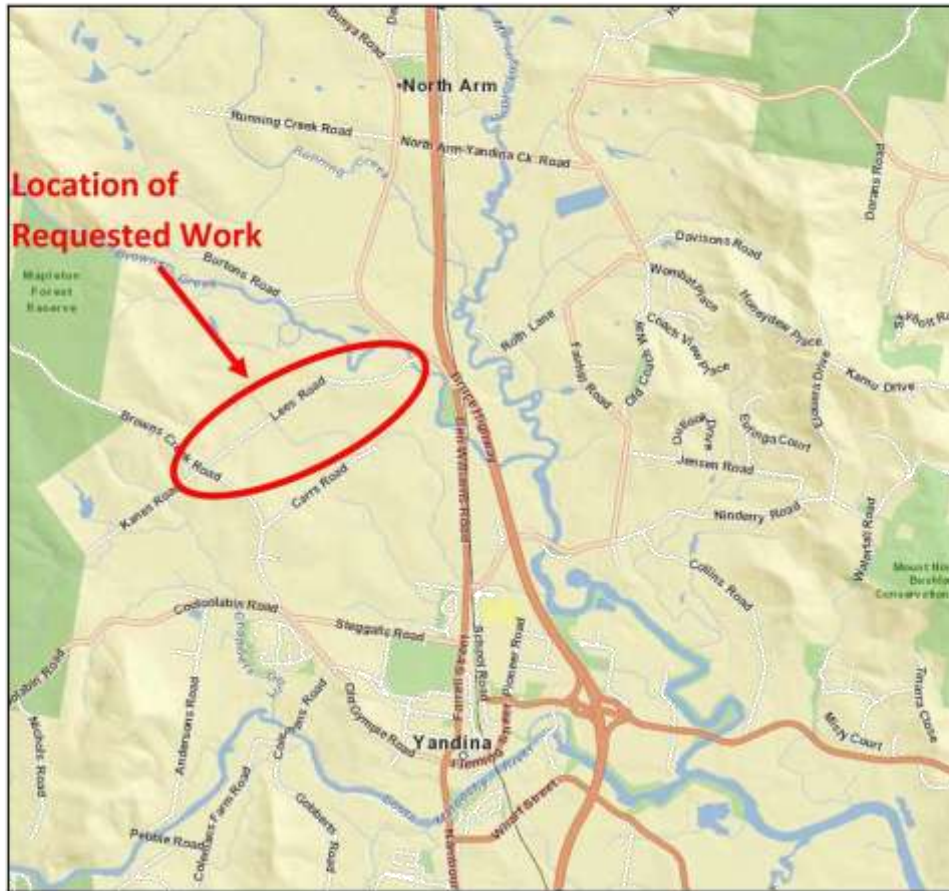


## Locality Plan – Lees Road



Lees road is currently sealed for the first 0.2kms from the east and the first 50m from the west, the remaining 1.7kms in the middle is unsealed. The proposal is for the sealing of the remaining 1.7kms, creating a continuous bitumen sealed pavement connecting Browns Creek Road to the west and Bunya Road to the east.

