

HASSELL

Revision	Date
A DEVELOPMENT APPROVAL APPLICATION	10-03-17
B ROOF TOP BAR AMENDED	04-09-17
C REVISED DEVELOPMENT APPROVAL APPLICATION	06-04-18

Scale
1: 500 @ A1

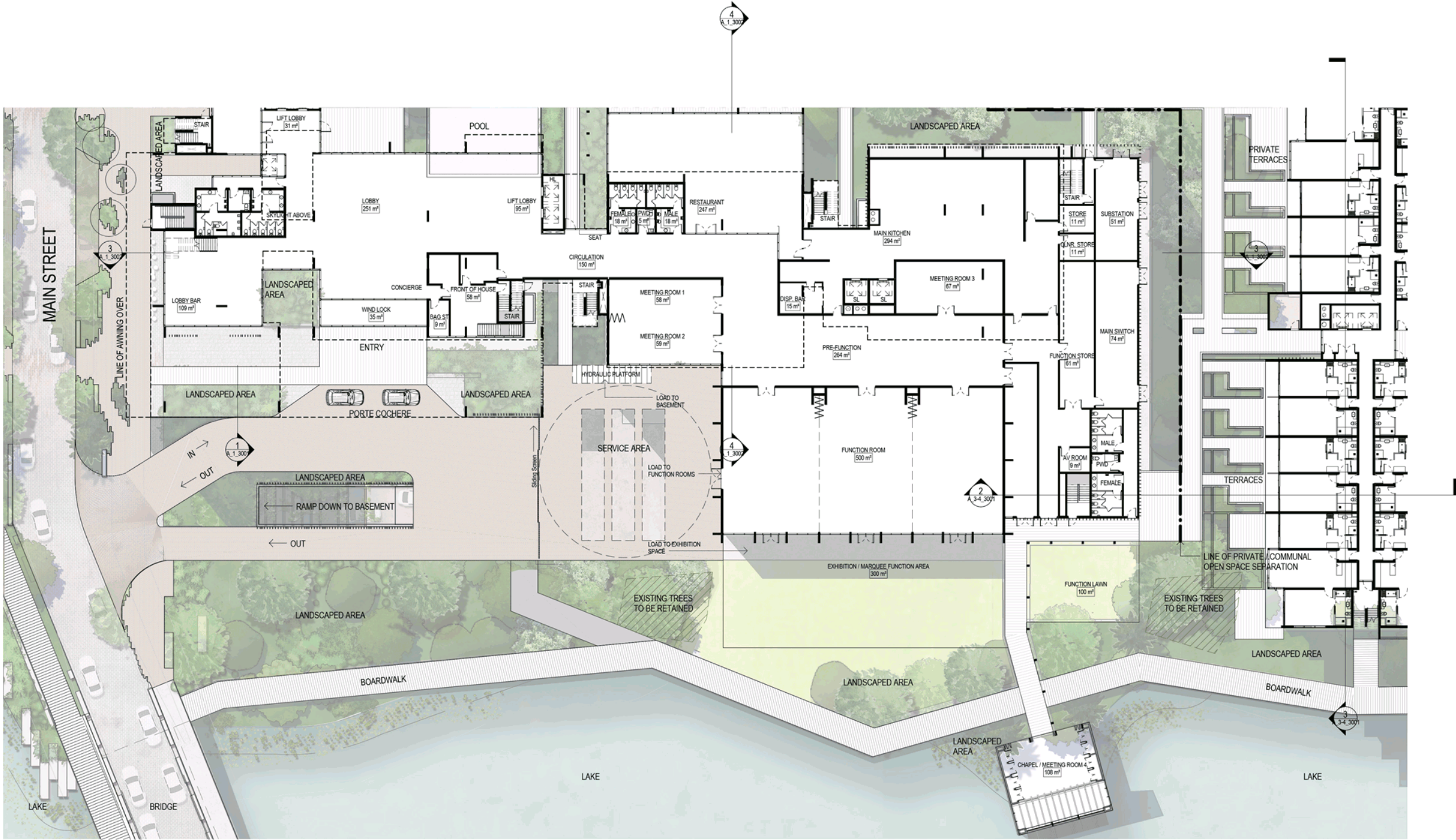
Project Name
YAROOMBA BEACH
MASTERPLAN

Drawing
A_0_0002
TOURISM PRECINCT SITE PLAN



Original Sheet Size A1=841 x 594mm





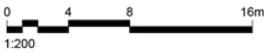
HASSELL

Revision	Date
A DEVELOPMENT APPROVAL APPLICATION	10-03-17
B ROOF TOP BAR AMENDED	04-09-17
C REVISED DEVELOPMENT APPROVAL APPLICATION	06-04-18

Scale
1 : 200 @ A1

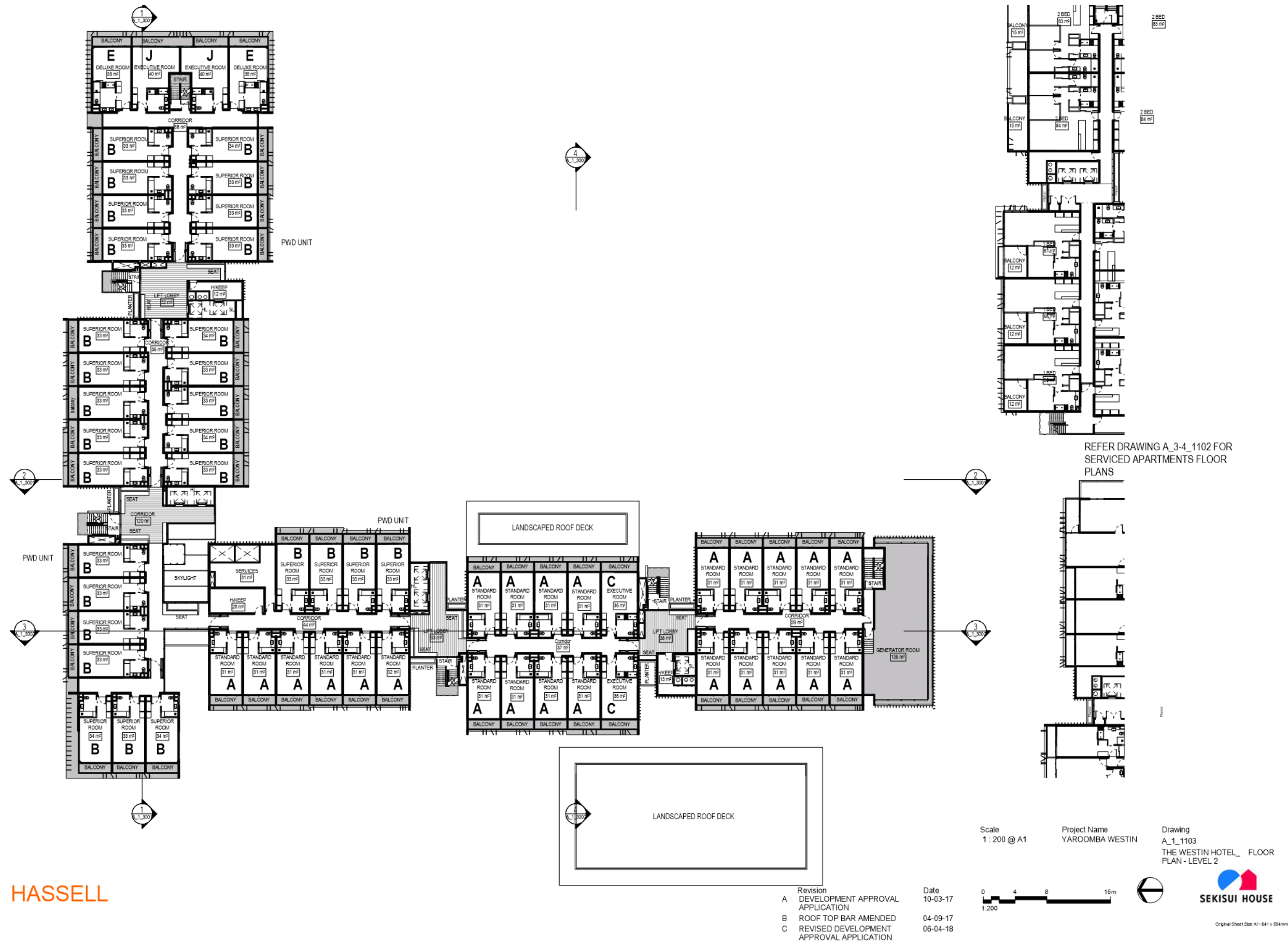
Project Name
YAROOMBA WESTIN

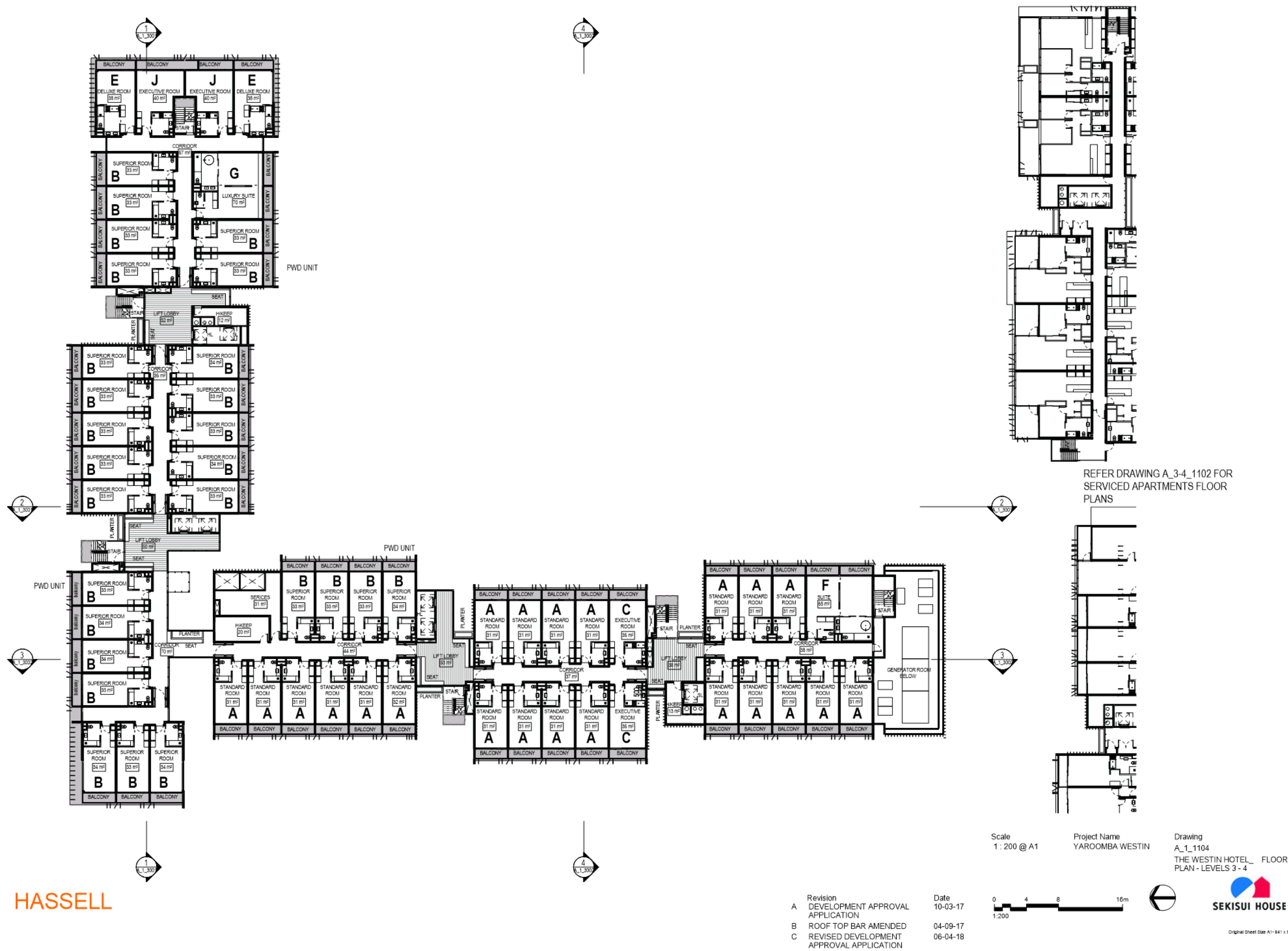
Drawing
A_1_1101a
THE WESTIN HOTEL_ FLOOR
PLAN - GROUND

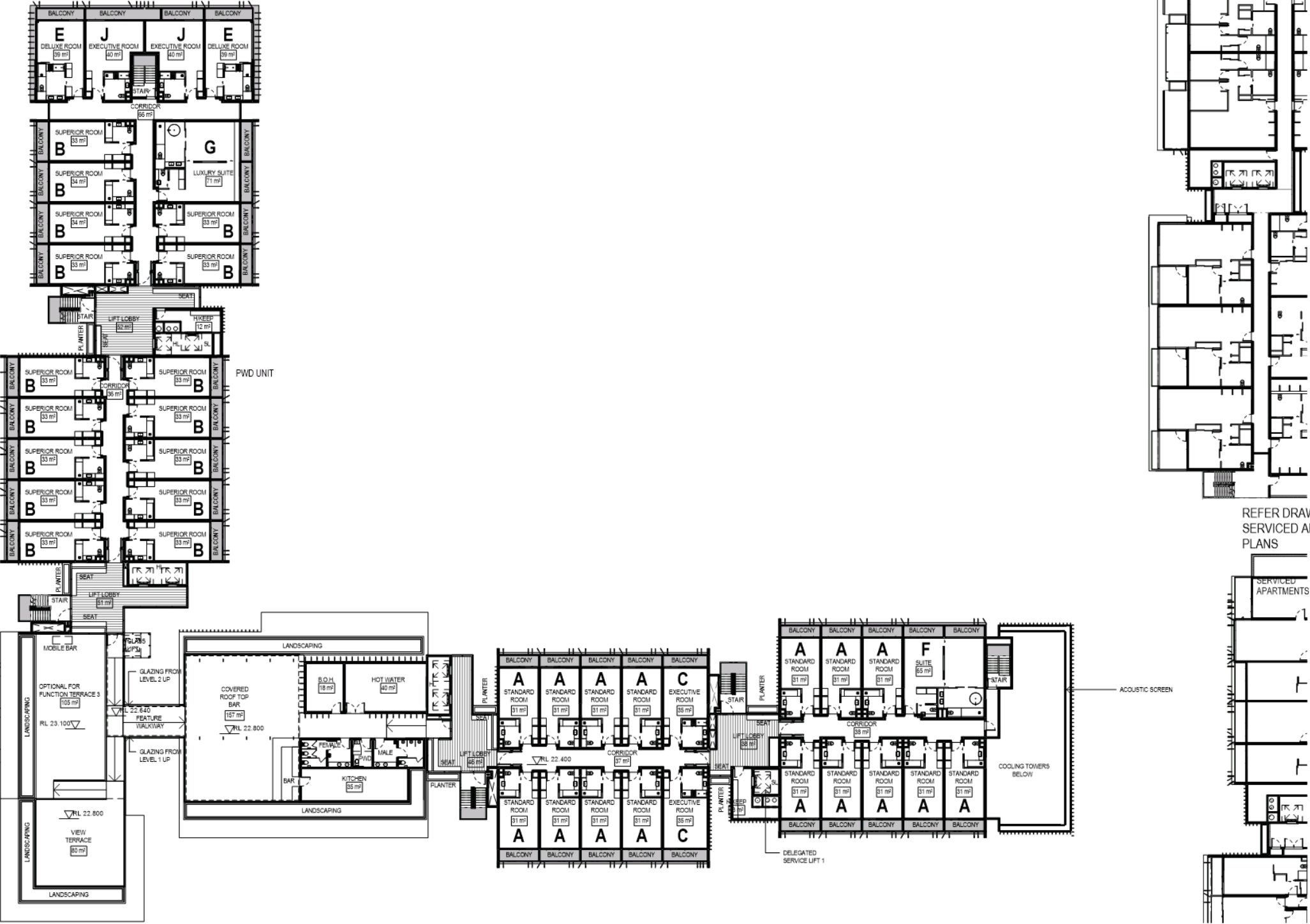


Original Sheet Size A1- 841 x 594mm

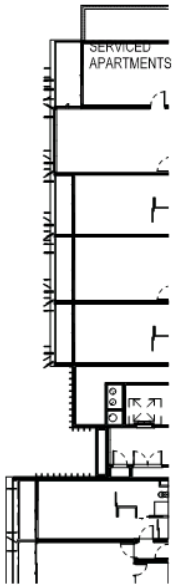








REFER DRAWING A_3-4_1102 FOR
SERVICED APARTMENTS FLOOR
PLANS



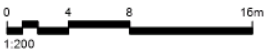
Scale
1 : 200 @ A1

Project Name
YAROOMBA WESTIN

Drawing
A_1_1105
THE WESTIN HOTEL_ FLOOR
PLAN - LEVEL 5

HASSELL

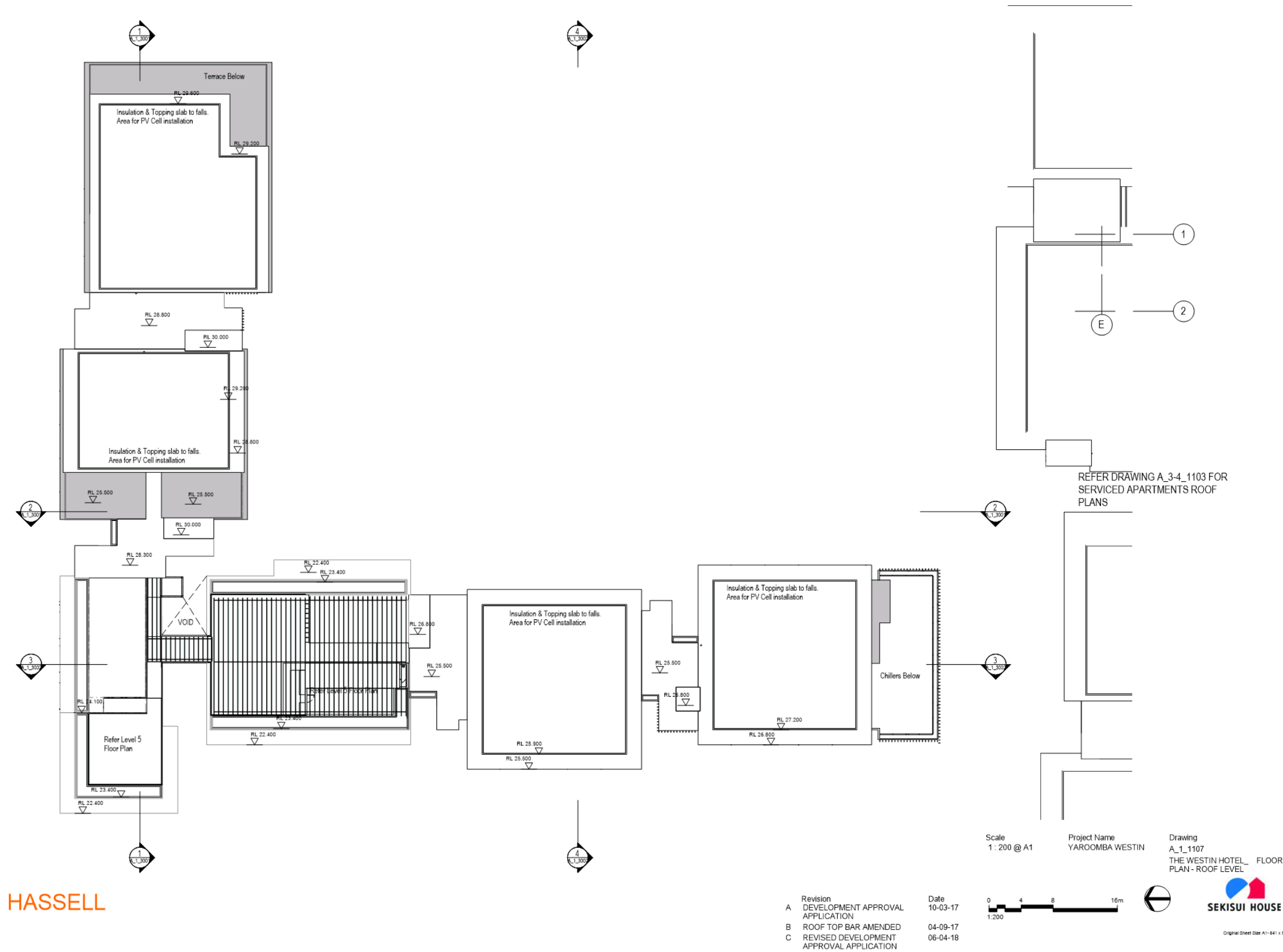
Revision	Date
A DEVELOPMENT APPROVAL APPLICATION	10-03-17
B ROOF TOP BAR AMENDED	04-09-17
C REVISED DEVELOPMENT APPROVAL APPLICATION	06-04-18



Original Sheet Size A1(841 x 594mm)

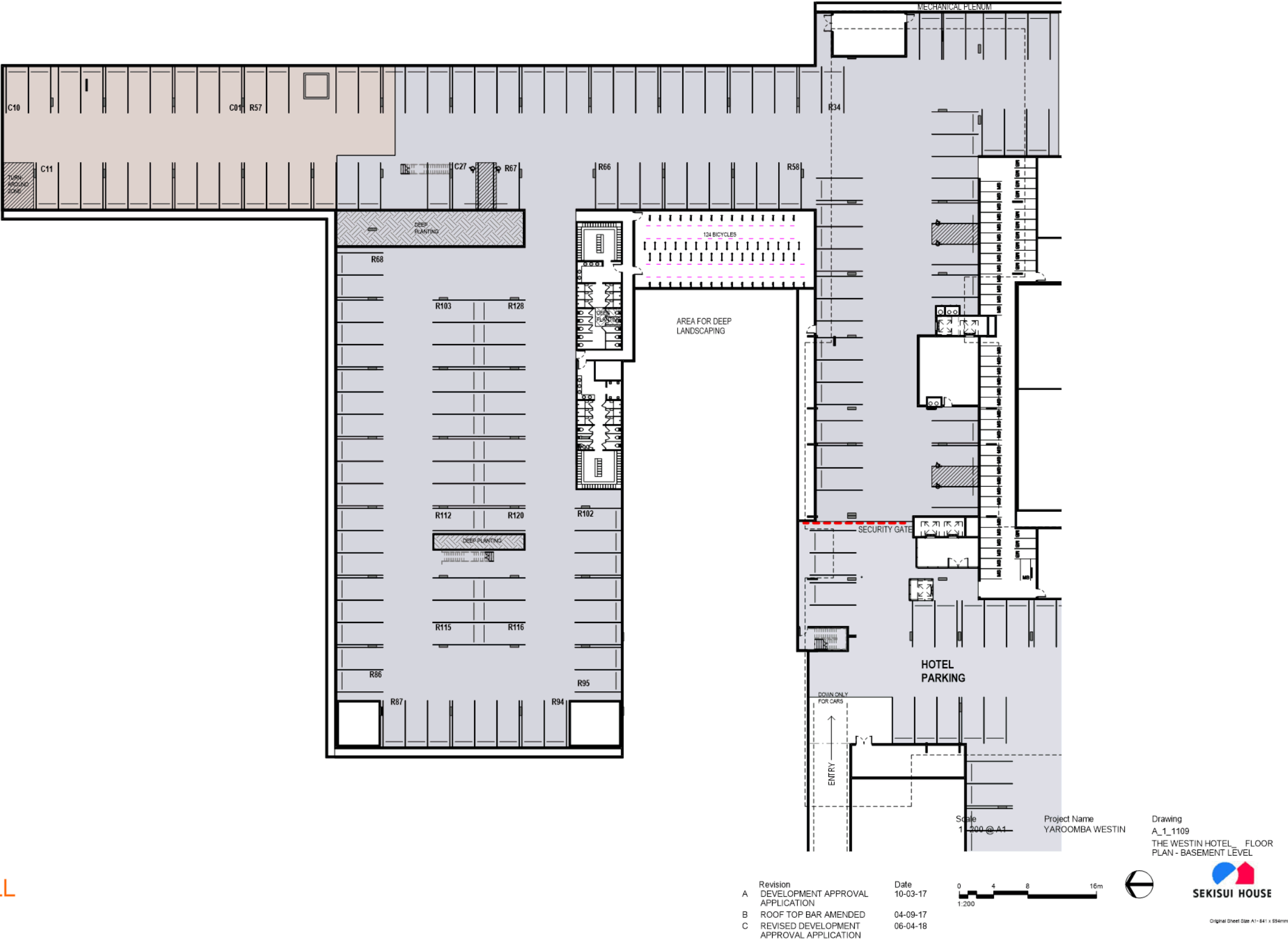


Original Sheet Size A1-841 x 594mm





HASSELL



KEYNOTE LEGEND	
Key Value	Keynote Text
AWN_01-01	AWNING TYPE 1, HOTEL, OFF FORM COLOURED CONCRETE
AWN_01-02	AWNING TYPE 2, HOTEL, OFF FORM COLOURED CONCRETE
BAL_01-01	BALUSTRADE TYPE 1, HOTEL, METAL BALUSTRADE WITH GLAZED PANEL
BAL_01-02	BALUSTRADE TYPE 2, HOTEL, METAL BALUSTRADE WITH METAL PANEL
CONC_01-01	CONCRETE TYPE 1, HOTEL, OFF FORM COLOURED CONCRETE
GT_01-01	GLAZING TYPE 1, HOTEL, METAL FRAMED CLEAR PERFORMANCE GLAZING
GT_01-02	GLAZING TYPE 2, HOTEL, METAL FRAMED CLEAR PERFORMANCE STRUCTURAL GLAZING
SCR_01-01	SCREEN TYPE 1, HOTEL, PRE-FINISHED BLADES
TMB_01-01	TIMBER TYPE 1, HOTEL, DRESSED, CLEAR FINISH



2 ELEVATION - EAST
1:200



1 ELEVATION - NORTH
1:200

Scale
1 : 200 @ A1

Project Name
YAROOMB WESTIN

Drawing
A_1_2001
THE WESTIN HOTEL
ELEVATION - NORTH & EAST

0 4 8 16m
1:200

SEKISUI HOUSE
Original Sheet Size A1- 841 x 594mm

HASSELL

Revision	Date
A DEVELOPMENT APPROVAL APPLICATION	10-03-17
B ROOF TOP BAR AMENDED	04-09-17
C REVISED DEVELOPMENT APPROVAL APPLICATION	06-04-18

KEYNOTE LEGEND	
Key Value	Keynote Text
AWN_01-01	AWNING TYPE 1_HOTEL_OFF FORM COLOURED CONCRETE
AWN_01-02	AWNING TYPE 2_HOTEL_OFF FORM COLOURED CONCRETE
BAL_01-01	BALUSTRADE TYPE 1_HOTEL_METAL BALUSTRADE WITH GLAZED PANEL
BAL_01-02	BALUSTRADE TYPE 2_HOTEL_METAL BALUSTRADE WITH METAL PANEL
CONC_01-01	CONCRETE TYPE 1_HOTEL_OFF FORM COLOURED CONCRETE
GT_01-01	GLAZING TYPE 1_HOTEL_METAL FRAMED CLEAR PERFORMANCE GLAZING
GT_01-02	GLAZING TYPE 2_HOTEL_ETAL FRAMED CLEAR PERFORMANCE STRUCTURAL GLAZING
SCR_01-01	SCREEN TYPE 1_HOTEL_PRE-FINISHED BLADES
TMB_01-01	TIMBER TYPE 1_HOTEL_DRESSED, CLEAR FINISH



HASSELL

Revision	Date
A DEVELOPMENT APPROVAL APPLICATION	10-03-17
B ROOF TOP BAR AMENDED	04-09-17
C REVISED DEVELOPMENT APPROVAL APPLICATION	06-04-18

Scale
1 : 200 @ A1

Project Name
YAROOMBA WESTIN

Drawing
A_1_2002
THE WESTIN HOTEL
ELEVATION - SOUTH & WEST

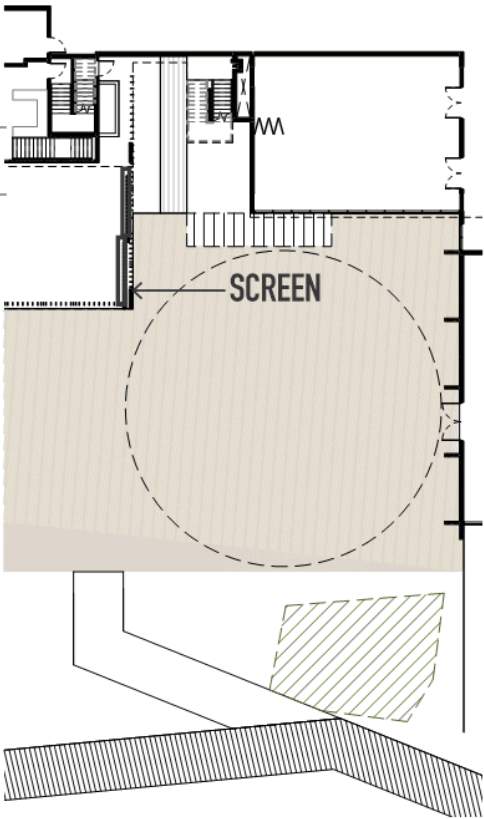


Original Sheet Size A1- 841 x 594mm

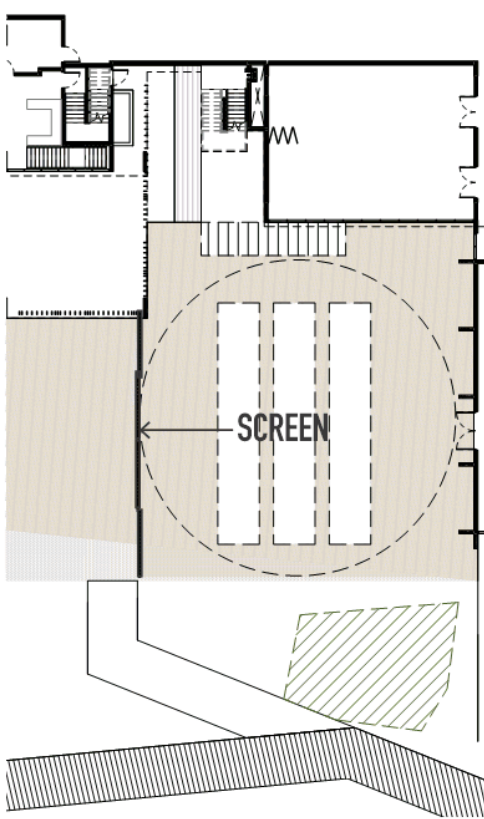
RFI #44

HOTEL - SERVICE AREA SCREEN

THE SCREEN TO THE SERVICE YARD WILL BE A HIGHLY DETAILED OPEN SCREEN. MATERIALS TO TIE IN WITH THE MAIN HOTEL. THE FINAL DESIGN OF THE SCREEN WILL BE WORKED THROUGH WITH THE OPERATOR DURING DESIGN DEVELOPMENT.



SCREEN IN OPEN POSITION



SCREEN IN CLOSED POSITION

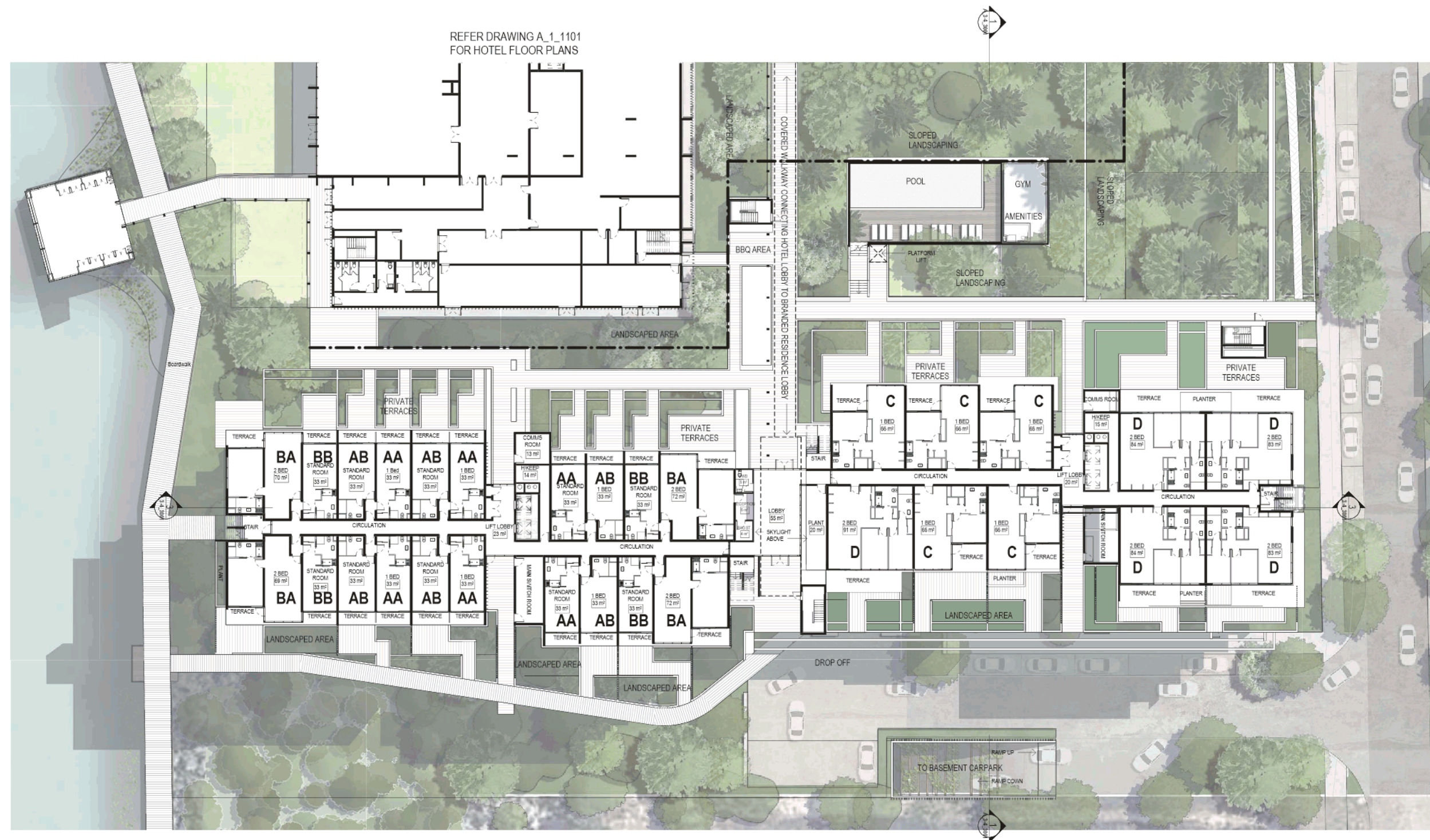


PRECEDENT IMAGES



INDICATIVE PERSPECTIVE

R_145 - Hotel Service Area Screen Character Imagery



HASELL

Scale
1 : 200 @ A1

Project Name
YAROOMBA WESTIN

Drawing
A_3-4_1101
SERVICED APARTMENTS_
FLOOR PLAN - GROUND

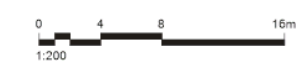


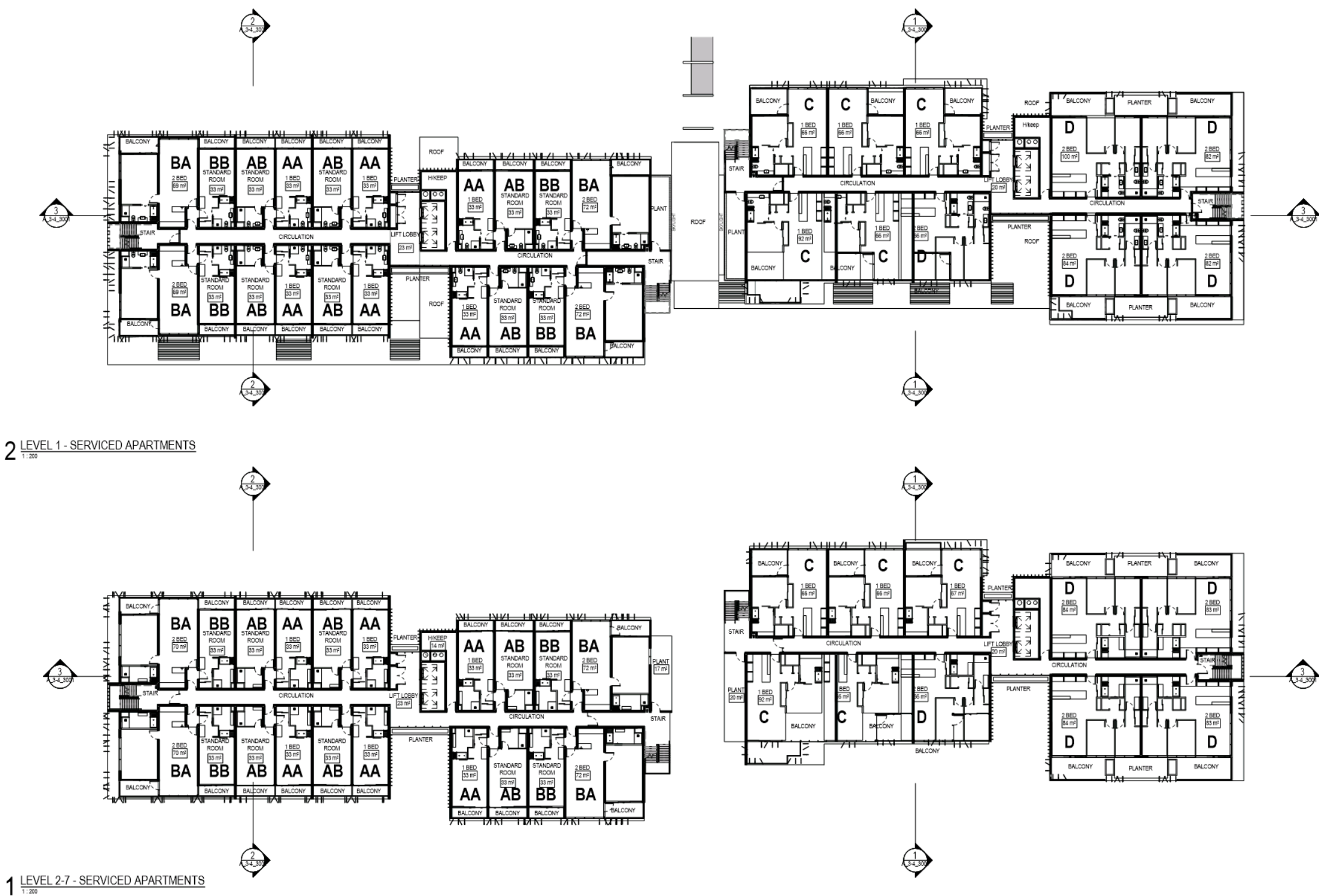
SEKISUI HOUSE

Original Sheet Size A1- 841 x 594mm

Revision
A DEVELOPMENT APPROVAL APPLICATION
B REVISED DEVELOPMENT APPROVAL APPLICATION

Date
10-03-17
06-04-18





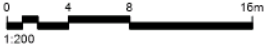
HASSELL

A	Revision	Date
DEVELOPMENT APPROVAL APPLICATION	10-03-17	
B	REVISED DEVELOPMENT APPROVAL APPLICATION	06-04-18

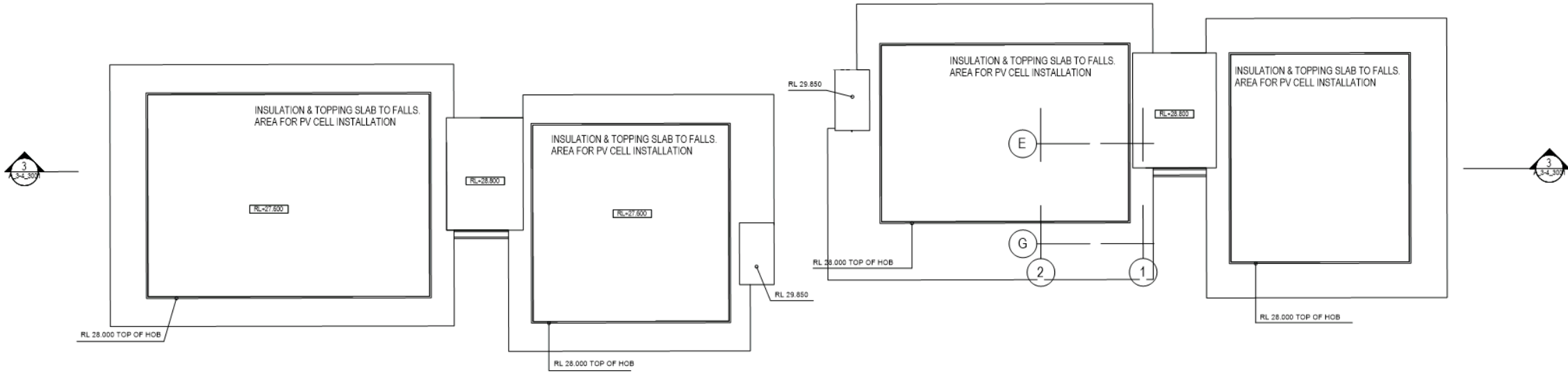
Scale
1 : 200 @ A1

Project Name
YAROOMBA WESTIN

Drawing
A_3-4_1102
SERVICED APARTMENTS
FLOOR PLAN - LEVELS 1 - 7



Original Sheet Size A1-841 x 594mm



HASSELL

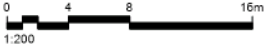
A	Revision
	DEVELOPMENT APPROVAL APPLICATION
B	REVISED DEVELOPMENT APPROVAL APPLICATION

Date
10-03-17
06-04-18

Scale
1 : 200 @ A1

Project Name
YAROOMBA WESTIN

Drawing
A_3-4_1103
SERVICED APARTMENTS_ ROOF PLAN



Original Sheet Size A1=841 x 594mm



HASSELL

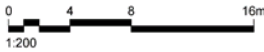
Revision
A DEVELOPMENT APPROVAL APPLICATION
B REVISED DEVELOPMENT APPROVAL APPLICATION

Date
10-03-17
06-04-18

Scale
1:200 @ A1

Project Name
YAROOMBA WESTIN

Drawing
A_3-4_2001
SERVICED APARTMENTS
ELEVATION - NORTH & SOUTH



Original Sheet Size A1- 841 x 594mm

KEYNOTE LEGEND	
Key Value	Keynote Text
BAL_03-4-01	BALUSTRADE TYPE 1, SERVICED APARTMENTS, METAL BALUSTRADE WITH GLAZED PANEL
BAL_03-4-02	BALUSTRADE TYPE 1, SERVICED APARTMENTS, METAL BALUSTRADE WITH METAL PANEL
CONC_03-4-01	CONCRETE TYPE 1, SERVICED APARTMENTS, OFF FORM COLOURED CONCRETE
GT_03-4-01	GLAZING TYPE 1, SERVICED APARTMENTS, ETAL FRAMED CLEAR PERFORMANCE GLAZING
SCR_03-4-01	SCREEN TYPE 1, SERVICED APARTMENTS, PRE-FINISHED BLADES
SCR_03-4-03	SCREEN TYPE 3, SERVICED APARTMENTS, PRE-FINISHED BAGUETTES



1 ELEVATION - EAST SERVICED APARTMENTS
1:200



2 ELEVATION - WEST SERVICED APARTMENTS
1:200

HASSELL

Scale
1 : 200 @ A1

Project Name
YAROOMBA WESTIN

Drawing
A_3-4_2002
SERVICED APARTMENTS
ELEVATION - EAST & WEST

Revision
A DEVELOPMENT APPROVAL
APPLICATION
B REVISED DEVELOPMENT
APPROVAL APPLICATION

Date
10-03-17
06-04-18

0 4 8 16m
1:200



Original Sheet Size A1- 841 x 594mm



HASSELL

Scale
1 : 200 @ A1

Revision
A DEVELOPMENT APPROVAL APPLICATION
B REVISED DEVELOPMENT APPROVAL APPLICATION

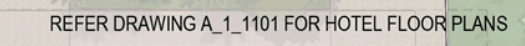
Date
10-03-17
06-04-18

0 4 8 16m
1:200

Project Name
YAROOMBA WESTIN

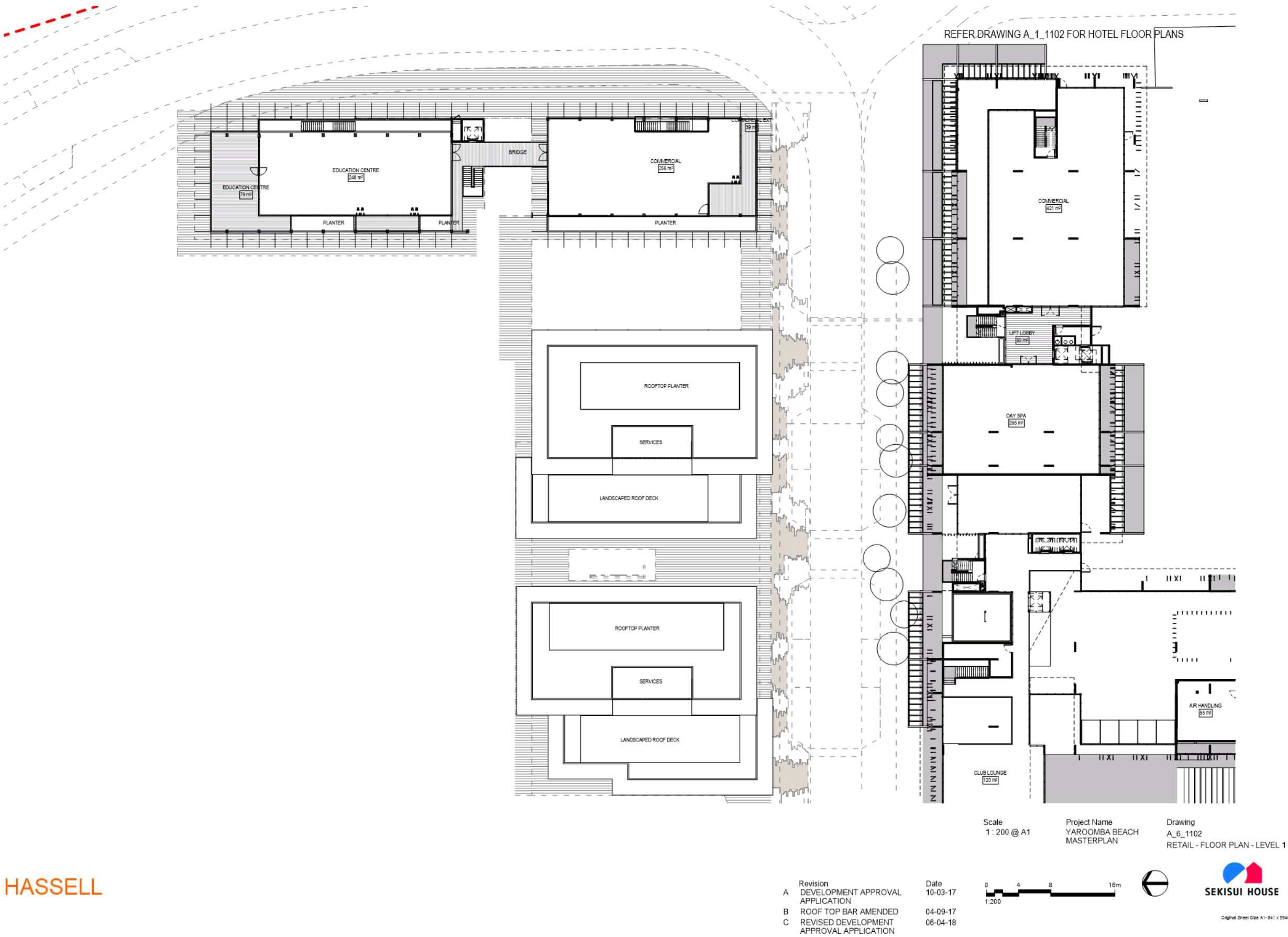
Drawing
A_3-4_3001
SERVICED APARTMENTS_ SECTIONS

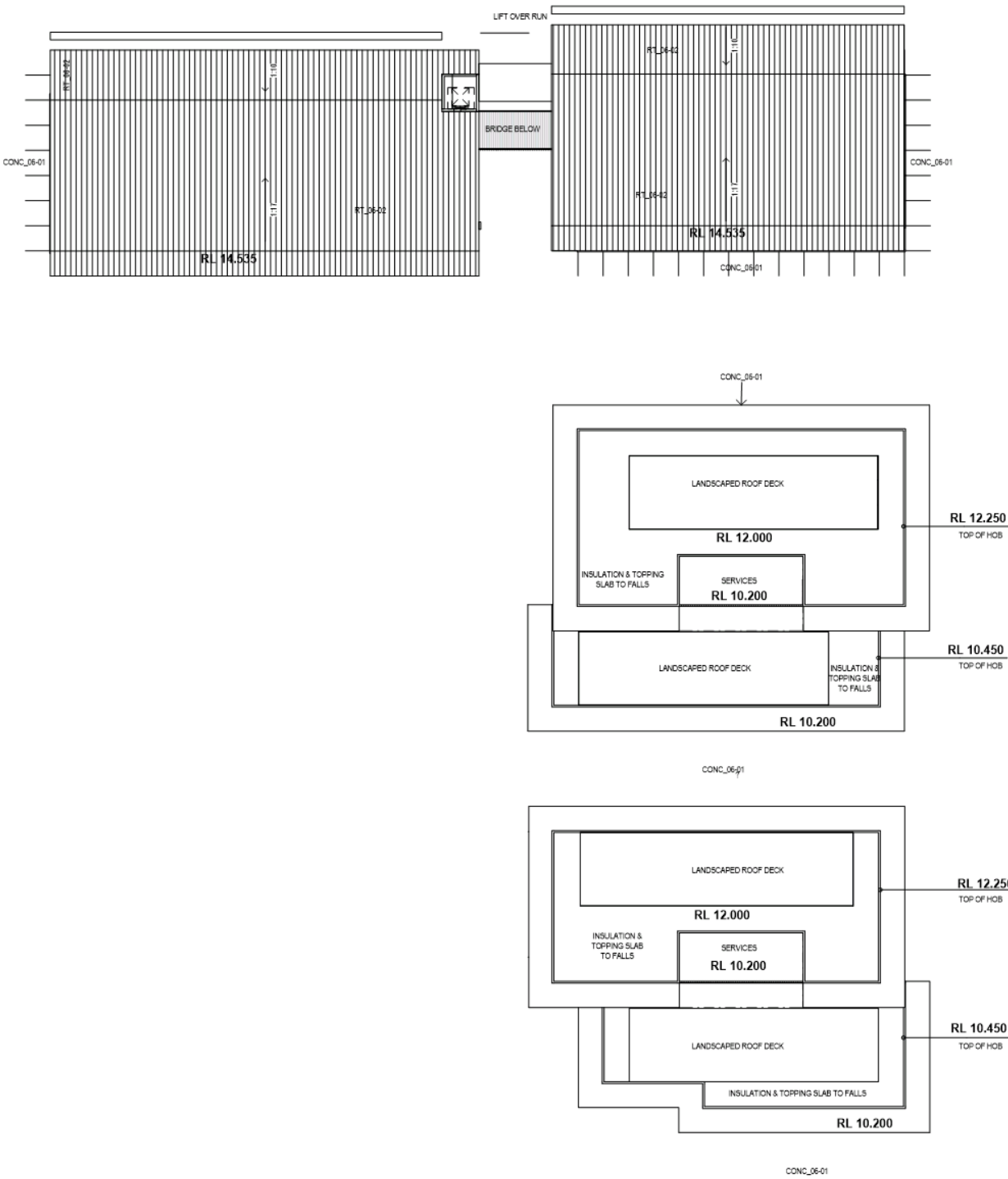
SEKISUI HOUSE
Original Sheet Size A1- 841 x 594mm



PORTE COCHERE
 Drawing
 A_6_1101
 RETAIL - FLOOR PLAN - GROUND

Original Sheet Size A1- 841 x 594mm





HASSELL

A Revision
REVISED DEVELOPMENT
APPROVAL APPLICATION

Date
06-04-18

Scale
1 : 200 @ A1

Project Name
YAROOMBA BEACH
MASTERPLAN

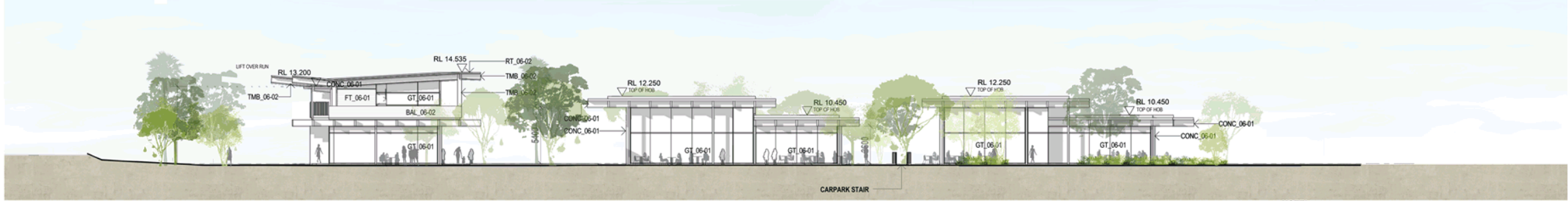
Drawing
A_6_1103
RETAIL - FLOOR PLAN - ROOF



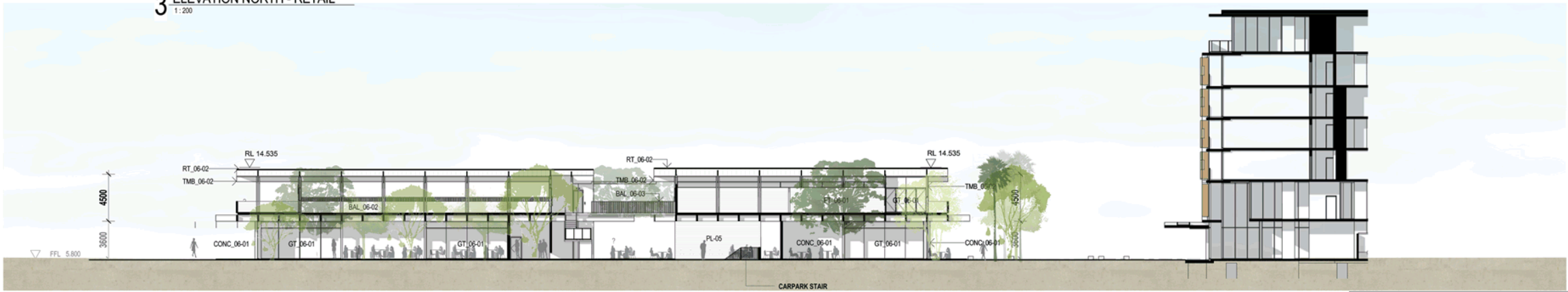
Original Sheet Size A1= 841 x 594mm



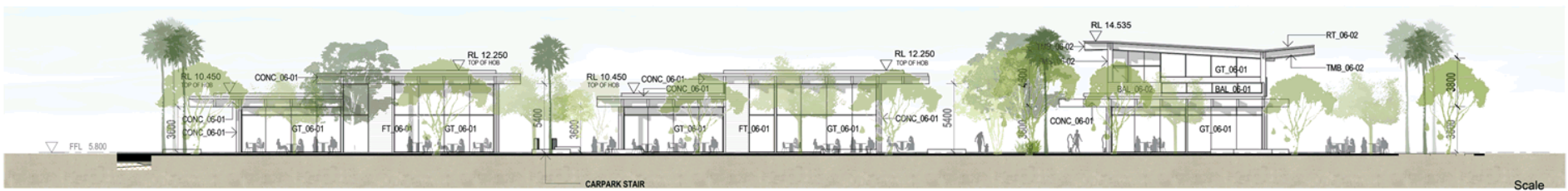
4 ELEVATION EAST - RETAIL
1:200



3 ELEVATION NORTH - RETAIL
1:200



2 ELEVATION WEST - RETAIL
1:200



1 ELEVATION SOUTH - RETAIL
1:200

KEYNOTE LEGEND	
Key Value	Keynote Text
BAL_06-01	BALUSTRADE TYPE 1 RETAIL, METAL BALUSTRADE WITH GLAZED PANEL
BAL_06-02	BALUSTRADE TYPE 2 RETAIL, TIMBER BALUSTRADE WITH TIMBER PANEL
BAL_06-03	BALUSTRADE TYPE 3 RETAIL, TIMBER BALUSTRADE WITH TIMBER PANEL
CONC_06-01	CONCRETE TYPE 1 RETAIL, OFF FORM COLOURED CONCRETE
FT_06-01	FACADE TYPE 1 RETAIL
GT_06-01	GLAZING TYPE 1 RETAIL, ETAL FRAMED CLEAR PERFORMANCE GLAZING
PL_05	PLASTER TYPE 1 RETAIL
RT_06-02	ROOF TYPE 2 RETAIL, ZINC ROOF SHEETING
SCR_06-01	SCREEN TYPE 1 RETAIL
TMB_06-02	TIMBER TYPE 2 RETAIL, GLULAM TIMBER BEAMS & COLUMNS

Scale
1:200 @ A1

Project Name
YAROOMBACH BEACH
MASTERPLAN

Drawing
A_6_2001
RETAIL - ELEVATIONS

HASSELL

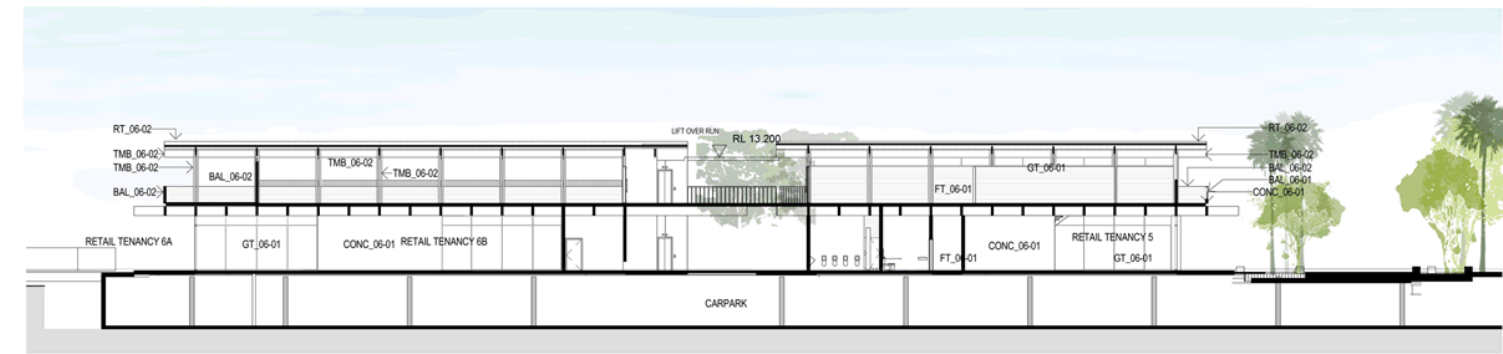
Revision
A DEVELOPMENT APPROVAL
APPLICATION
B REVISED DEVELOPMENT
APPROVAL APPLICATION

Date
10-03-17
06-04-18

0 4 8 16m
1:200



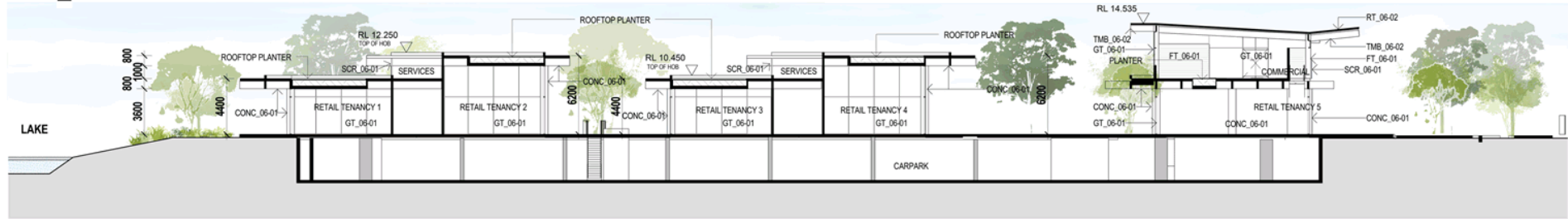
Original Sheet Size A1-841 x 594mm



3 SECTION
1:200



2 SECTION
1:200



1 SECTION
1:200

HASSELL

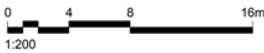
A	Revision	10-03-17
A	DEVELOPMENT APPROVAL APPLICATION	
B	REVISED DEVELOPMENT APPROVAL APPLICATION	06-04-18

Date
10-03-17
06-04-18

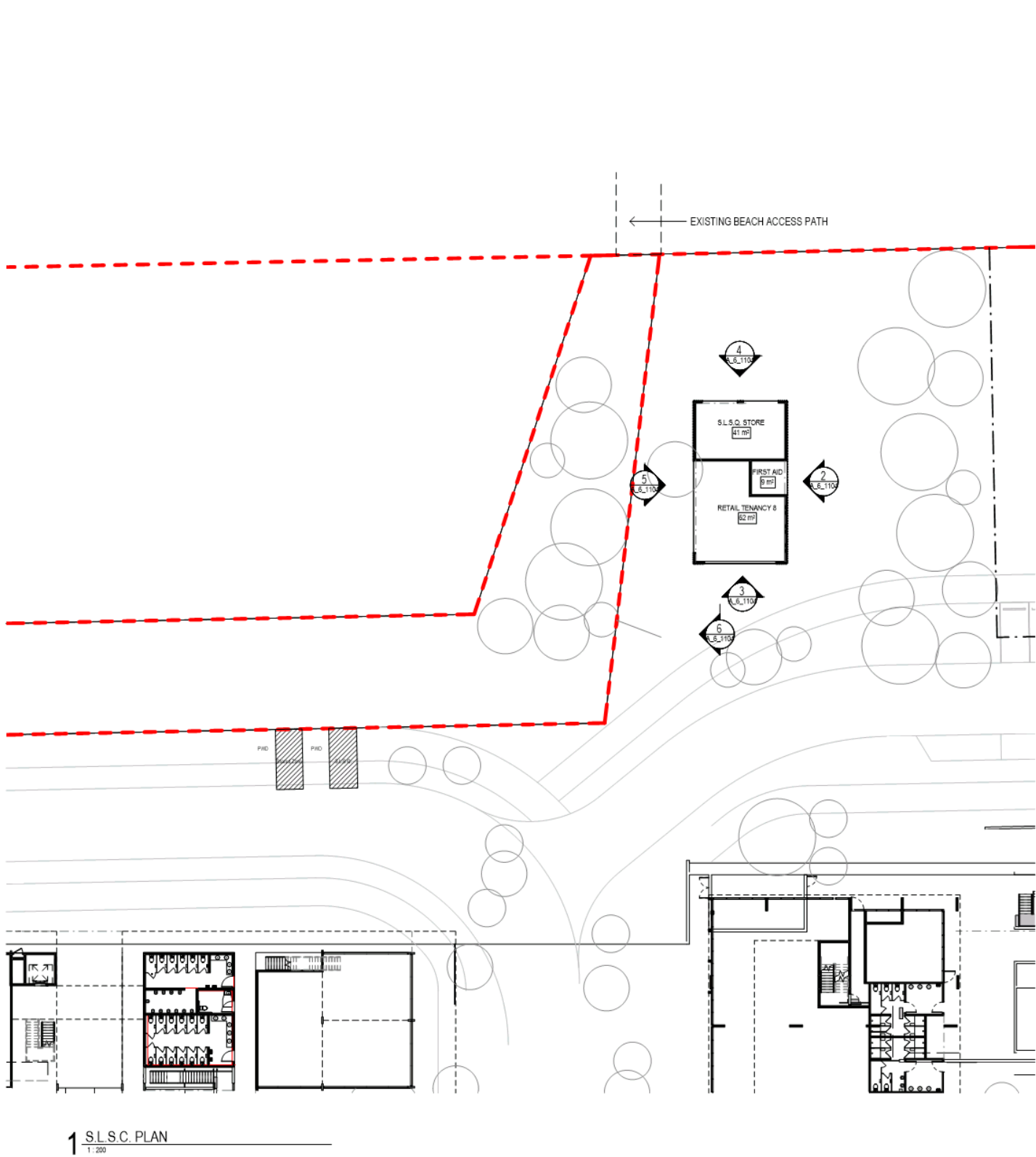
Scale
1:200 @ A1

Project Name
YAROOMBA BEACH
MASTERPLAN

Drawing
A_6_3001
RETAIL - SECTION



Original Sheet Size A1-841 x 594mm



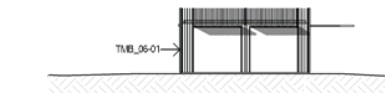
KEYNOTE LEGEND	
Key Value	Keynote Text
TMB_06-01	TIMBER TYPE 1, RETAIL, DRESSED, CLEAR FINISH



2 KIOSK SE ELEVATION
1:200



3 KIOSK SW ELEVATION
1:200



4 KIOSK NE ELEVATION
1:200



5 KIOSK SE ELEVATION1
1:200



6 KIOSK SECTION
1:200

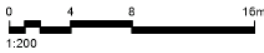
HASSELL

Revision	Date
A DEVELOPMENT APPROVAL APPLICATION	10-03-17
B REVISED DEVELOPMENT APPROVAL APPLICATION	06-04-18

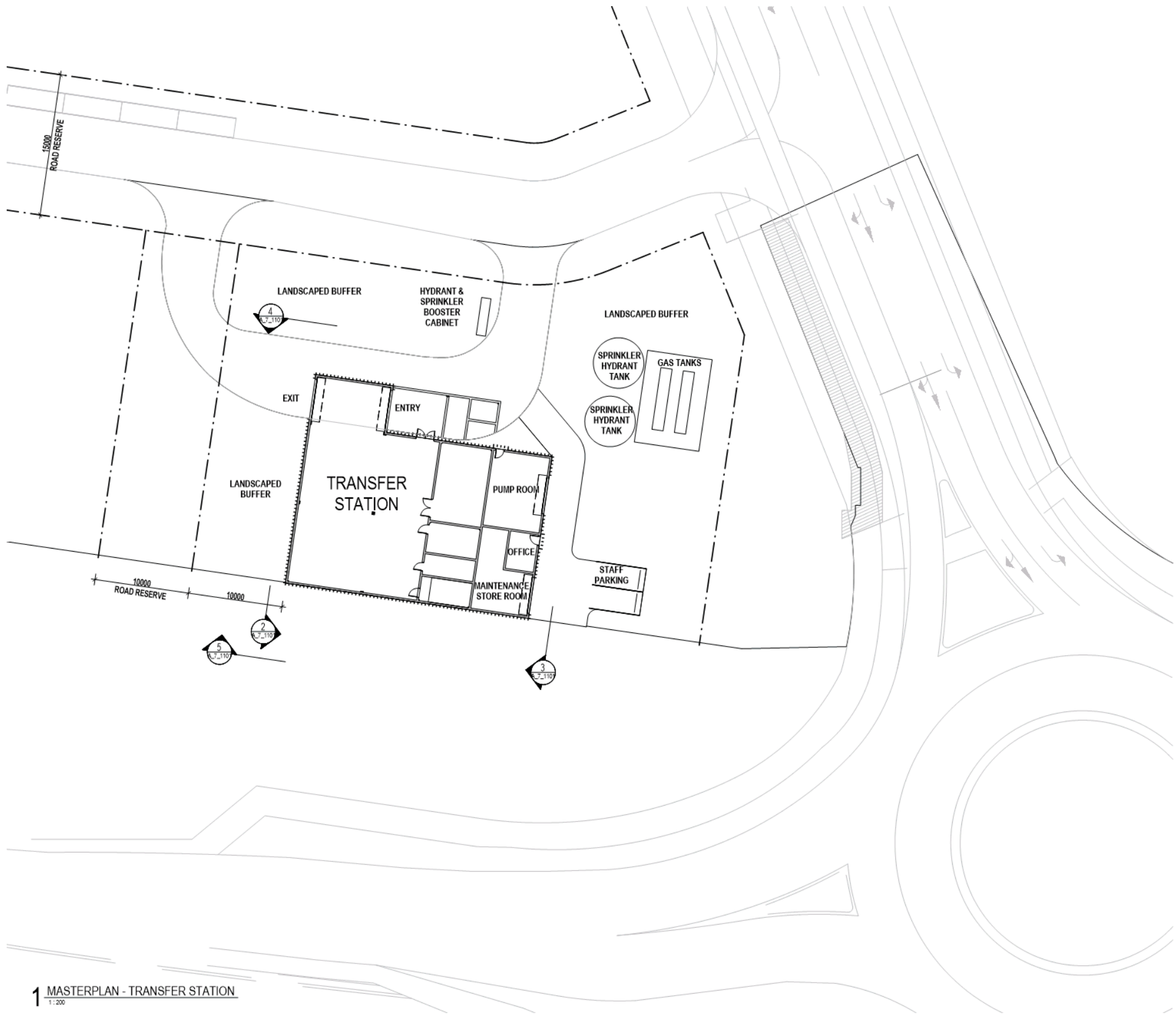
Scale
1:200 @ A1

Project Name
YAROOMBIA BEACH
MASTERPLAN

Drawing
A_6_1104
RETAIL / S.L.S.Q. - FLOOR PLAN -
GROUND



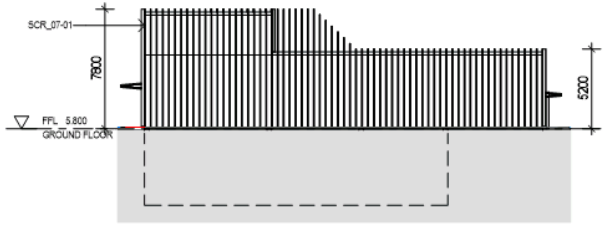
Original Sheet Size A1: 841 x 594mm



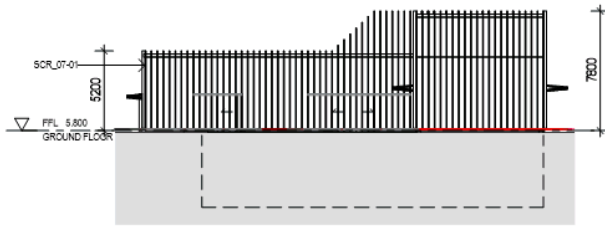
1 MASTERPLAN - TRANSFER STATION
1:200

HASSELL

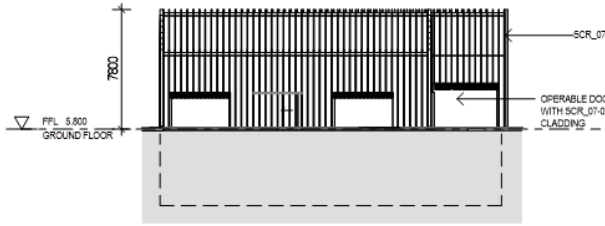
KEYNOTE LEGEND	
Key Value	Keynote Text
SCR_07-01	SCREEN TYPE 1, TRANSFER STATION, PRE-FINISHED BLADES WITH LANDSCAPE BETWEEN



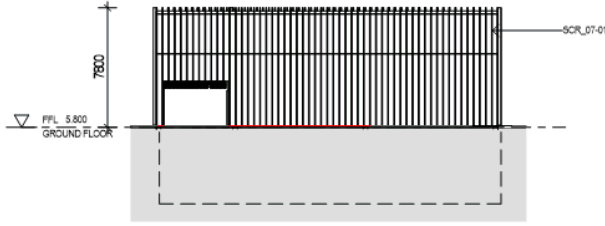
5 ELEVATION TRANSFER STATION-WEST
1:200



4 ELEVATION TRANSFER STATION-EAST
1:200



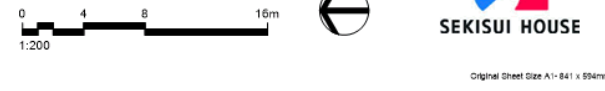
3 ELEVATION TRANSFER STATION-SOUTH
1:200

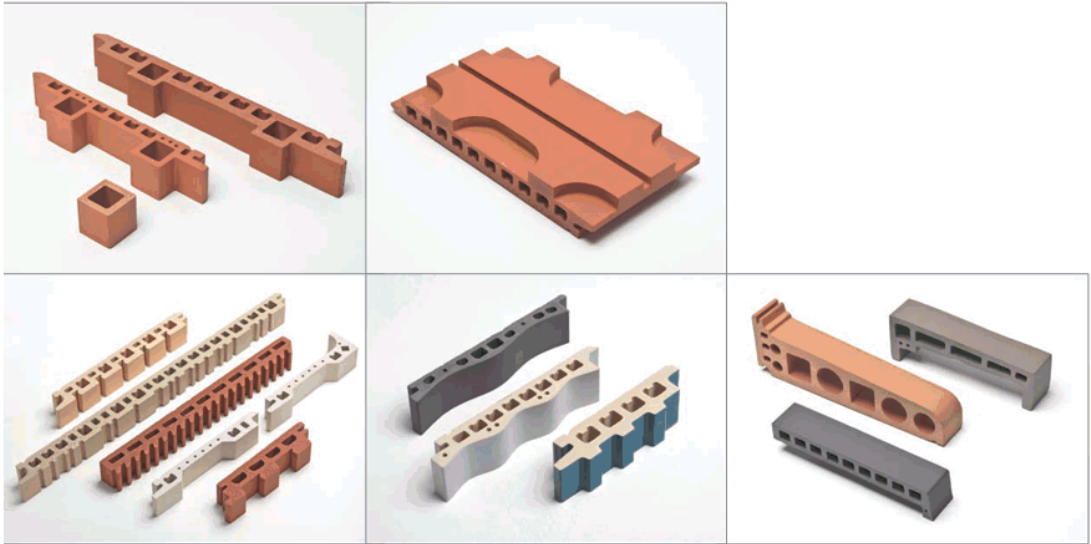
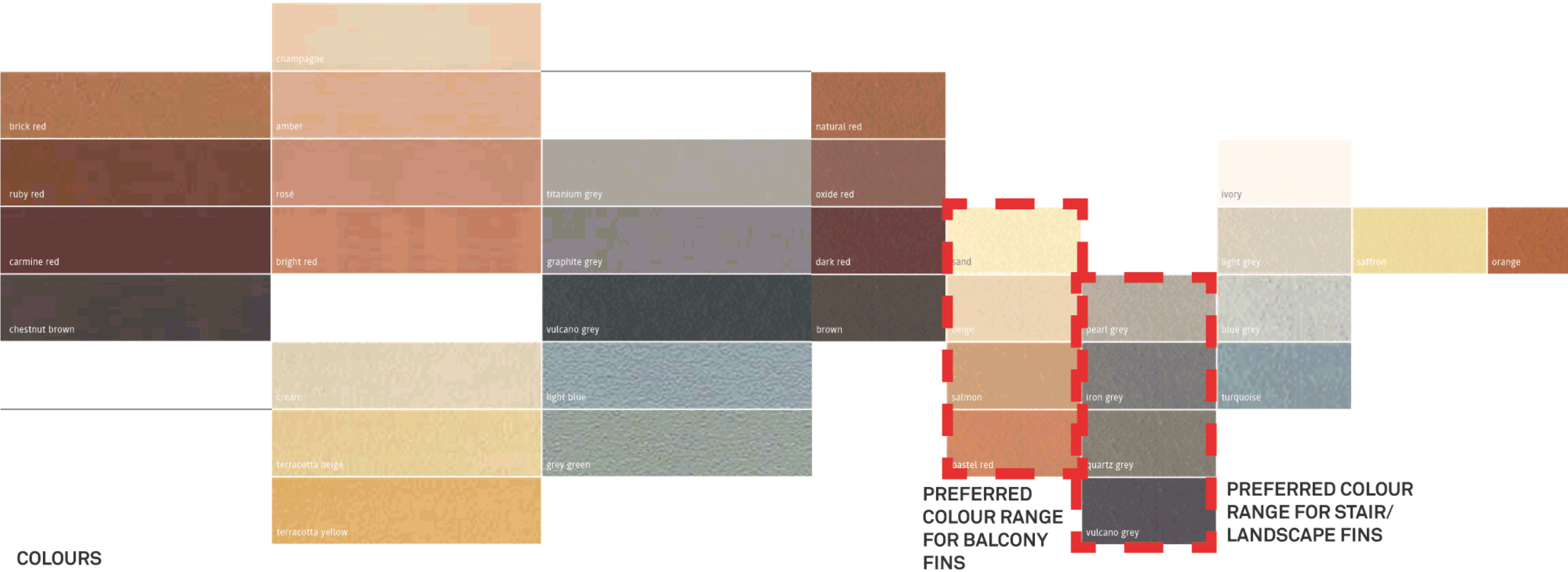


2 ELEVATION TRANSFER STATION-NORTH
1:200

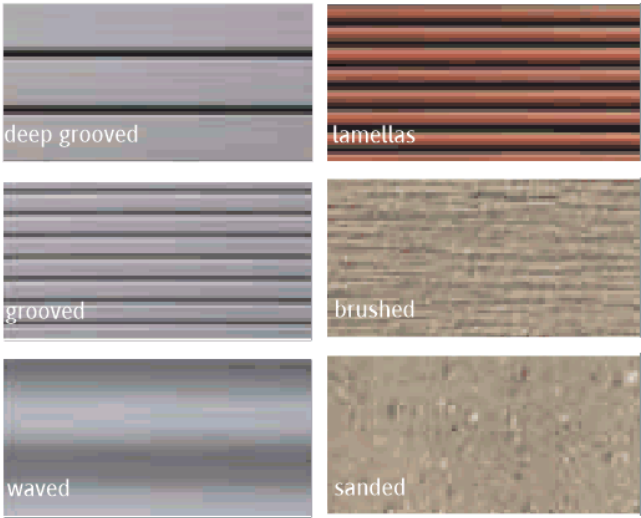
Scale 1:200 @ A1
Project Name YAROOMBA BEACH MASTERPLAN
Drawing A_Z_1101 TRANSFER STATION

Revision	Date
A DEVELOPMENT APPROVAL APPLICATION	10-03-17
B REVISED DEVELOPMENT APPROVAL APPLICATION	06-04-18





STANDARD PROFILES - CUSTOM PROFILES AVAILABLE



SURFACES

HASSELL

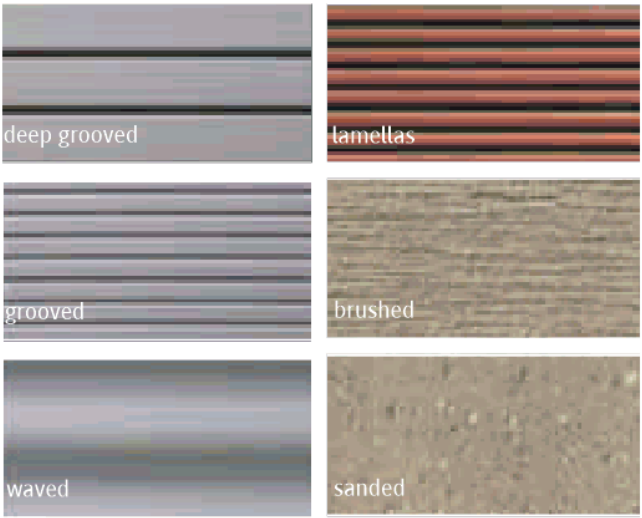
YAROOMBA BEACH - MATERIAL STUDY
JUNE 2017 - ISSUE 1

FACADE TREATMENT-FINS



THE WESTIN
COOLUM
RESORT & SPA

FACADE CONCEPT



BLADE MATERIAL REVIEW



INTEGRATED LANDSCAPE WITHIN BUILT FORM



ISOMETRIC SECTION - VERTICAL GARDENS

THIS WILL BE APPLIED FOR BOTH
HOTEL & SERVICED APARTMENTS





Metal Roof Sheetting - Chapel, Kiosk

Sample from Local Aggregate

PREFERRED COLOUR



Clear Glass - Façade & Balustrades

Coloured Concrete - Exposed facade treatment

Dressed Timber Flooring

Factory applied 2 pac paint finish to exposed steel

Stone From Local Quarry

Terracotta Blades to Façade

HASELL

YAROOMBA BEACH - MATERIAL STUDY
JUNE 2017 - ISSUE 1

MATERIAL SAMPLES



THE WESTIN
COOLUM
RESORT & SPA

SERVICED APARTMENTS



SERVICED APARTMENTS



SERVICED APARTMENTS



..... Glass Balustrade

..... Coloured Concrete slab
edges.
Overhang to provide sun
shading

..... Privacy Screen

..... Landscape to Perimeter
of Building

SERVICED APARTMENTS



PRECINCT ARRIVAL



GREEN AMPHITHEATRE

