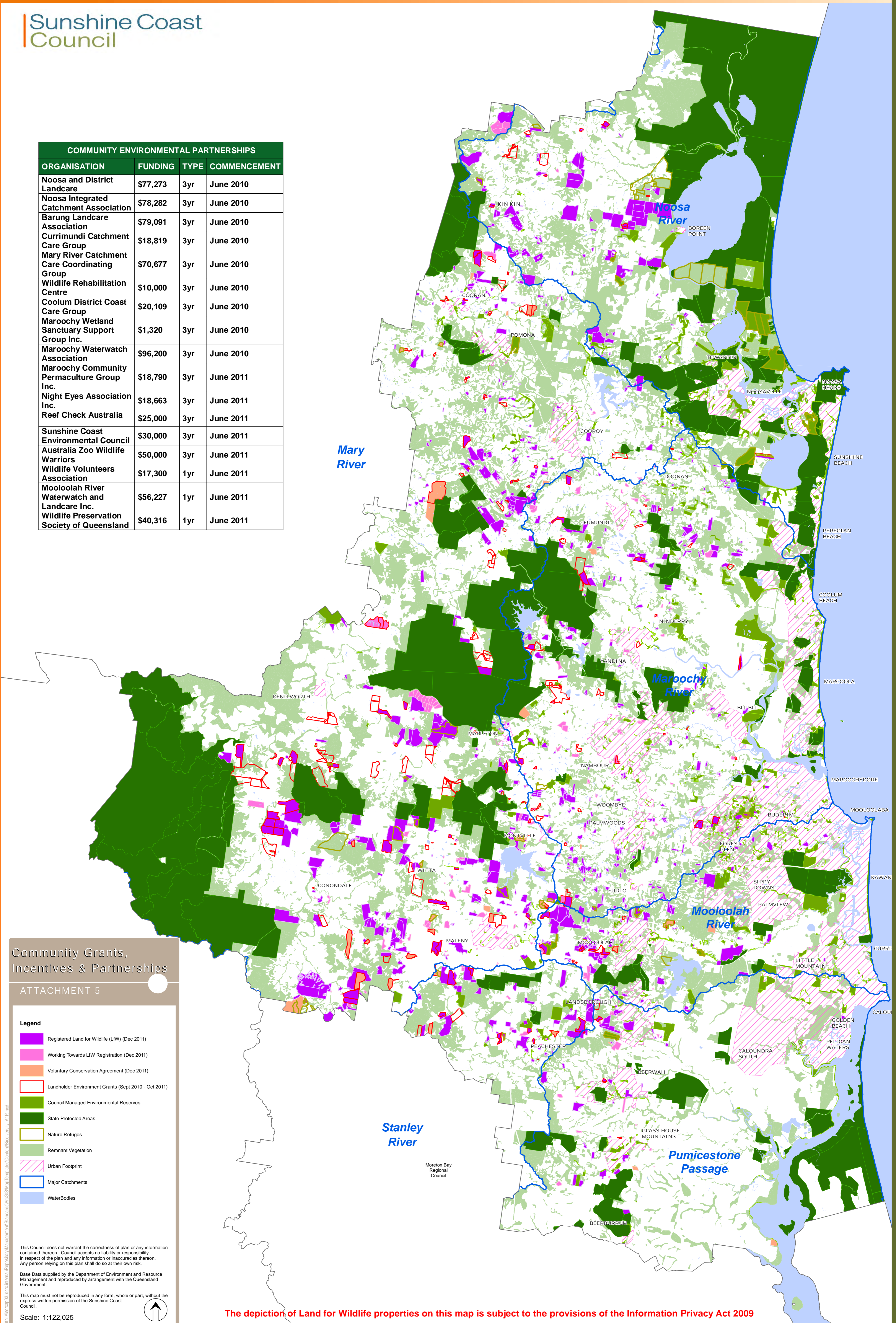


COMMUNITY ENVIRONMENTAL PARTNERSHIPS			
ORGANISATION	FUNDING	TYPE	COMMENCEMENT
Noosa and District Landcare	\$77,273	3yr	June 2010
Noosa Integrated Catchment Association	\$78,282	3yr	June 2010
Barung Landcare Association	\$79,091	3yr	June 2010
Currimundi Catchment Care Group	\$18,819	3yr	June 2010
Mary River Catchment Care Coordinating Group	\$70,677	3yr	June 2010
Wildlife Rehabilitation Centre	\$10,000	3yr	June 2010
Coolum District Coast Care Group	\$20,109	3yr	June 2010
Maroochy Wetland Sanctuary Support Group Inc.	\$1,320	3yr	June 2010
Maroochy Waterwatch Association	\$96,200	3yr	June 2010
Maroochy Community Permaculture Group Inc.	\$18,790	3yr	June 2011
Night Eyes Association Inc.	\$18,663	3yr	June 2011
Reef Check Australia	\$25,000	3yr	June 2011
Sunshine Coast Environmental Council	\$30,000	3yr	June 2011
Australia Zoo Wildlife Warriors	\$50,000	3yr	June 2011
Wildlife Volunteers Association	\$17,300	1yr	June 2011
Mooloolah River Waterwatch and Landcare Inc.	\$56,227	1yr	June 2011
Wildlife Preservation Society of Queensland	\$40,316	1yr	June 2011



Community Grants, Incentives & Partnerships

ATTACHMENT 5

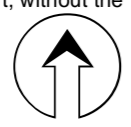
- Legend**
- Registered Land for Wildlife (LW) (Dec 2011)
 - Working Towards LW Registration (Dec 2011)
 - Voluntary Conservation Agreement (Dec 2011)
 - Landholder Environment Grants (Sept 2010 - Oct 2011)
 - Council Managed Environmental Reserves
 - State Protected Areas
 - Nature Refuges
 - Remnant Vegetation
 - Urban Footprint
 - Major Catchments
 - WaterBodies

This Council does not warrant the correctness of plan or any information contained thereon. Council accepts no liability or responsibility in respect of the plan and any information or inaccuracies thereon. Any person relying on this plan shall do so at their own risk.

Base Data supplied by the Department of Environment and Resource Management and reproduced by arrangement with the Queensland Government.

This map must not be reproduced in any form, whole or part, without the express written permission of the Sunshine Coast Council.

Scale: 1:122,025



The depiction of Land for Wildlife properties on this map is subject to the provisions of the Information Privacy Act 2009