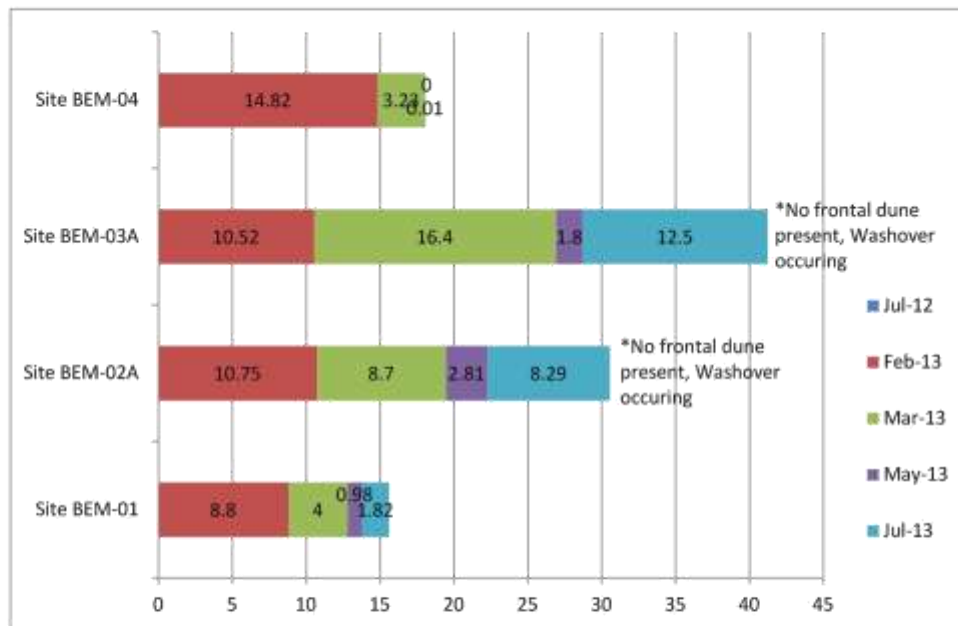


**Data**

**Bribie Island - Loss of Dune: July 2012 - July 2013**

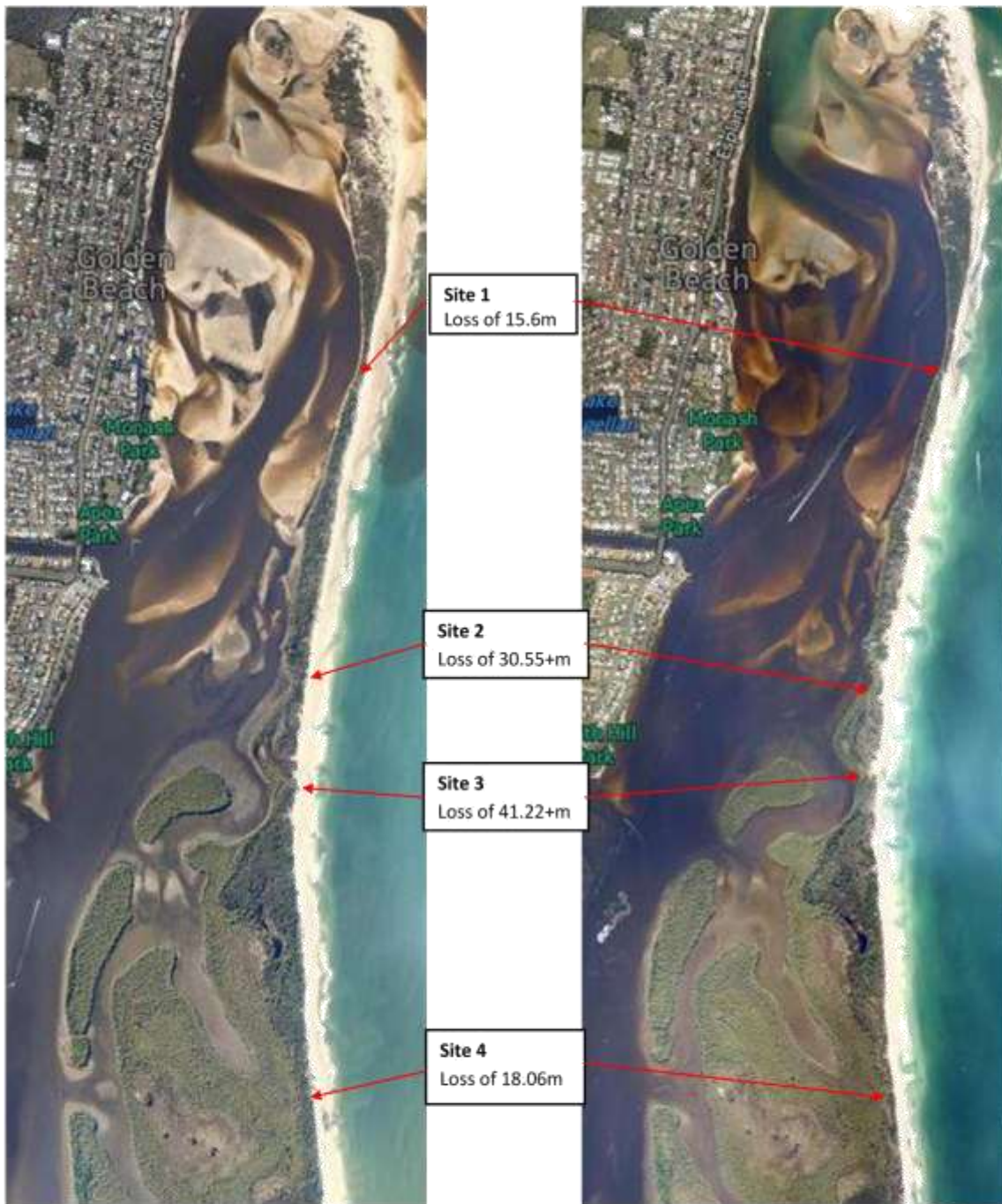
Site	GPS Position Information		Distance from Marker Peg to Dune Edge (m)					Total Loss of Dune since July 2012 (m)	Comments
	Easting	Northing	Jul-12	Feb-13	Mar-13	May-13	Jul-13		
Site BEM-01	26.824363	153.131815	25.89	17.09	13.09	12.11	10.29	15.60	Reference marker washed away
Site BEM-02A	26.83846	153.128922	30.55	19.80	11.10	8.29	No frontal dune present	30.55 +	Reference marker washed away
Site BEM-03A	26.84119	153.12859	41.22	30.70	14.30	12.50	No frontal dune present	41.22 +	Complete washover no frontal dune present
Site BEM-04	26.854845	153.129301	18.70	3.88	0.65	0.64	0.64	18.06	

**Bribie Island - Loss of Dune (m) per month of monitoring: July 2012 - July 2013**



## Aerial Photos

Bribie Island - Loss of Dune: July 2012 – June 2013



July 2012

June 2013

## Photos

Site 1 – Looking North



July 2012



June 2013 (loss of 15.6m)

Site 1 – Looking South



July 2012



June 2013 (loss of 15.6m)

Site 2 – Looking North



July 2012



June 2013 (loss of 30.55+ m)

Site 2 – Looking South



July 2012



June 2013(loss of 30.55+ m)

Site 3 – Looking North



July 2012



June 2013 (loss of 41.22+m)

Site 3 – Looking South



July 2012



June 2013 (loss of 41.22+m)



Site 4 – Looking North



July 2012



June 2013 ( loss of 18.06m)

Site 4 - Looking South



July 2012



June 2013 (loss of 18.06m)