



SITE MASTER PLAN 1:1000



HEIDI MEYER
CREATIVE DIRECTOR

Job#	267-01
Drawing	SP_SMP_01
Date	2018.02.14
Revision	J



LANDSCAPE TYPOLOGY PLAN

SD-05

BADDERAM ECO LUXE RESORT & SPA

JOB NO.
DF15032



Revision	Date	Amendments
A	28.10.2016	For Review
B	15.03.2017	For Approval
C	09.06.2017	Boundary set back Adjustment
D	12.02.2018	For Approval
E	19.02.2018	Council RFI - For Approval



W: www.ProjectUrban.com.au
P: 07 5443 2844
E: info@ProjectUrban.com.au
Suite 1, Corner Surf Road & Gardak Street
Alexandra Headland QLD 4572



KEY

- Remnant Vegetation not impacted by Development Works
- Trees Impacted by Development Works
- Trees to Remain - with appropriate protection measures

TREE RETENTION PLAN

SD-08

BADDERAM ECO LUXE RESORT & SPA

JOB NO.
DF15032

NORTH

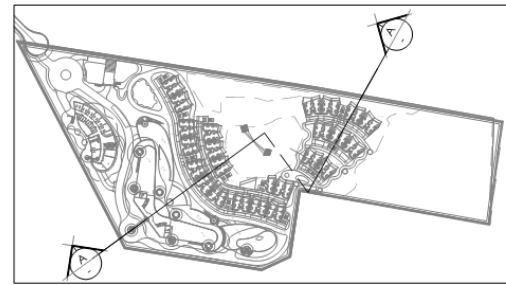
Plan to be read in conjunction with
'Tree Survey & Retention Plan' Issue B
2016-10-14 prepared by North Coast
Environmental Services



Revision	Date	Amendments
A	28.10.2016	For Review
B	15.03.2017	For Approval
C	09.06.2017	Boundary set back Adjustment
D	12.02.2018	For Approval
E	19.02.2018	Council RFI - For Approval



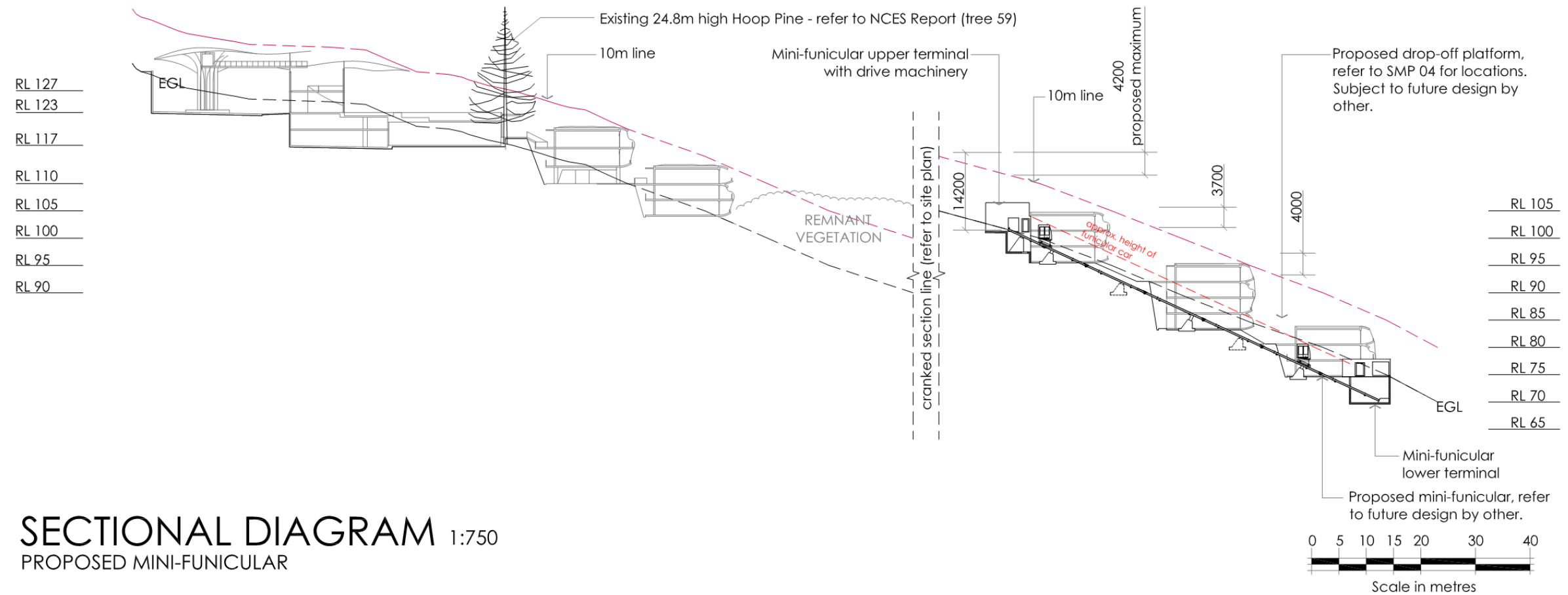
W: www.ProjectUrban.com.au
P: 07 5443 2844
E: info@ProjectUrban.com.au
Suite 1, Corner Surf Road & Gardak Street
Alexandra Headland QLD 4572



SITE LEGEND



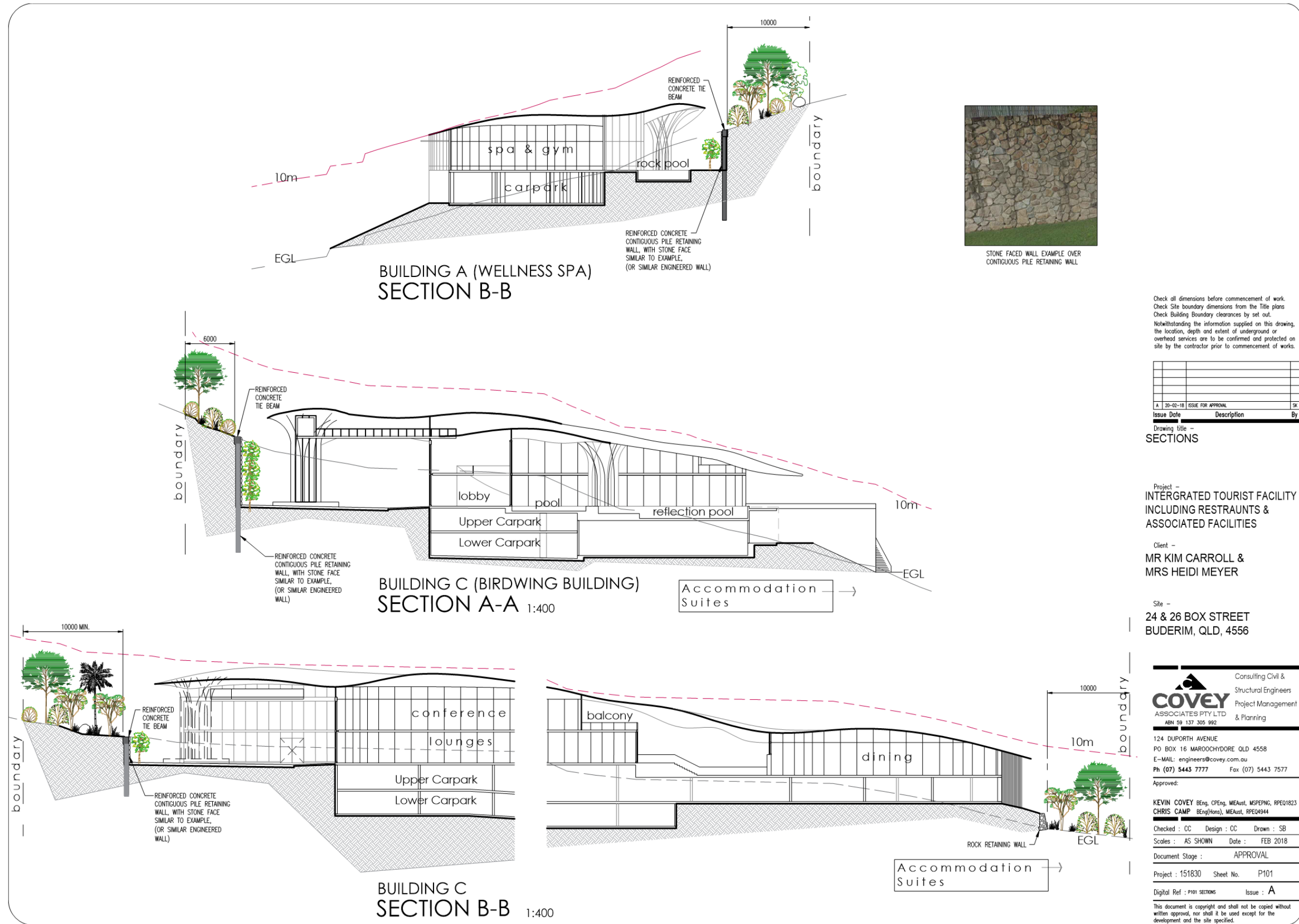
Example of mini-funicular system installed to a private residence in Vail/USA



SECTIONAL DIAGRAM 1:750
 PROPOSED MINI-FUNICULAR



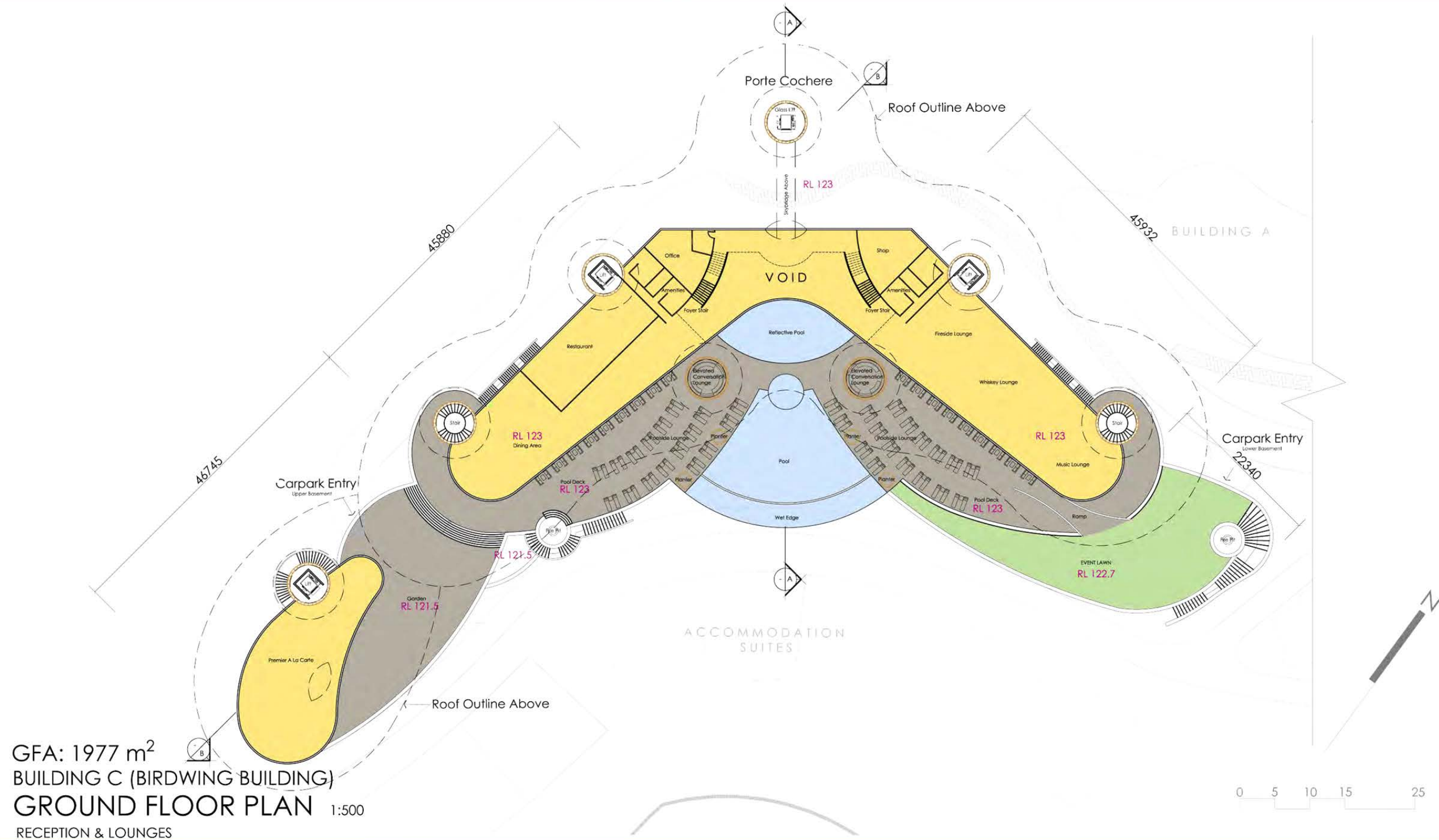
Job# 267-01
 Drawing SP_SMP_07
 Date 2018.02.12
 Revision H



O:\JOBS\151830\dwg covey\MCU\uncontrolled\P101 SECTIONS.dwg



IPA ISSUE



GFA: 1977 m²
 BUILDING C (BIRDWING BUILDING)
 GROUND FLOOR PLAN 1:500
 RECEPTION & LOUNGES

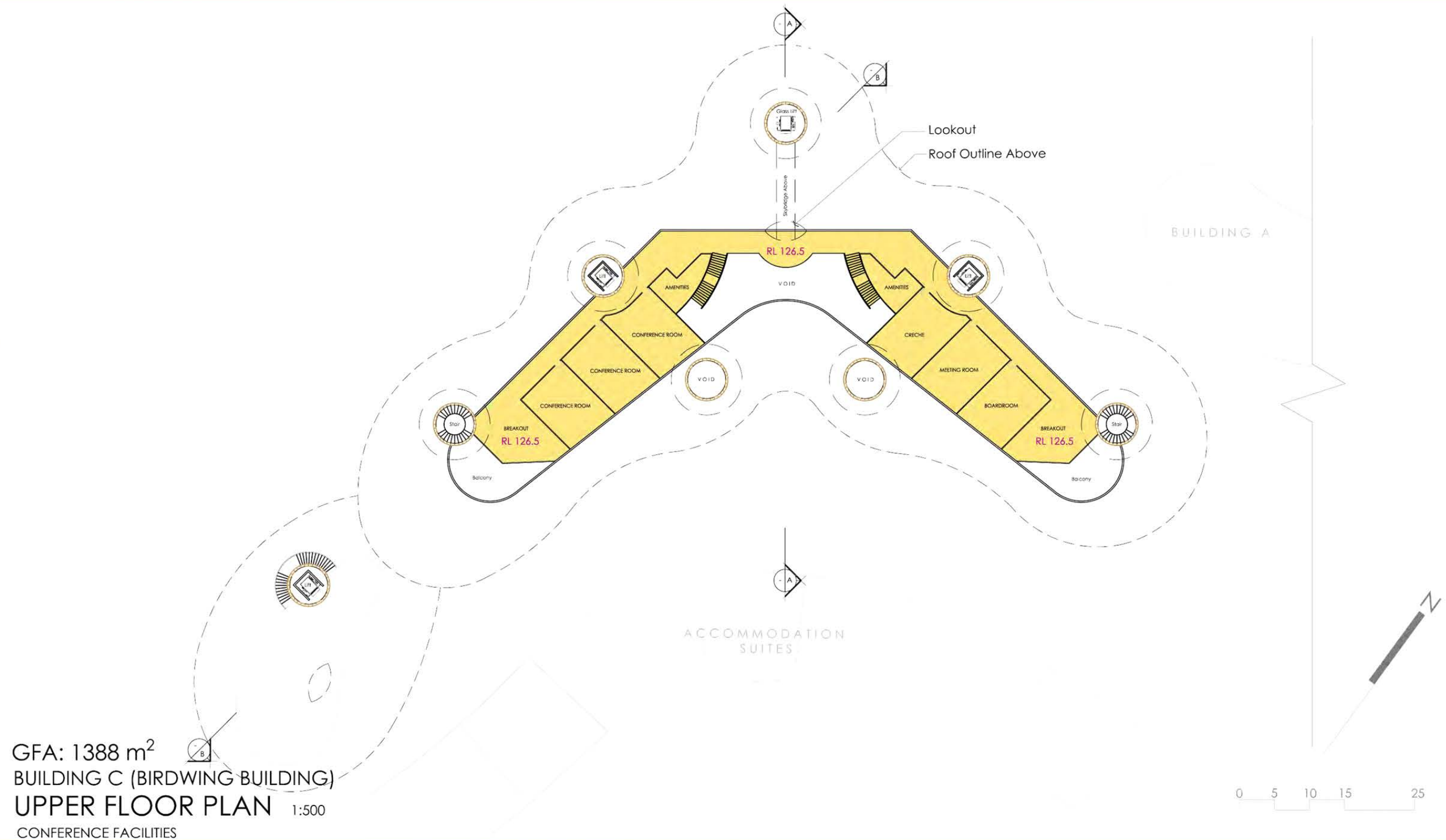


HEIDI MEYER
 CREATIVE DIRECTOR

Job #	267-01
Drawing	SP_BC_01
Date	2016.09.21
Revision	C



IPA ISSUE



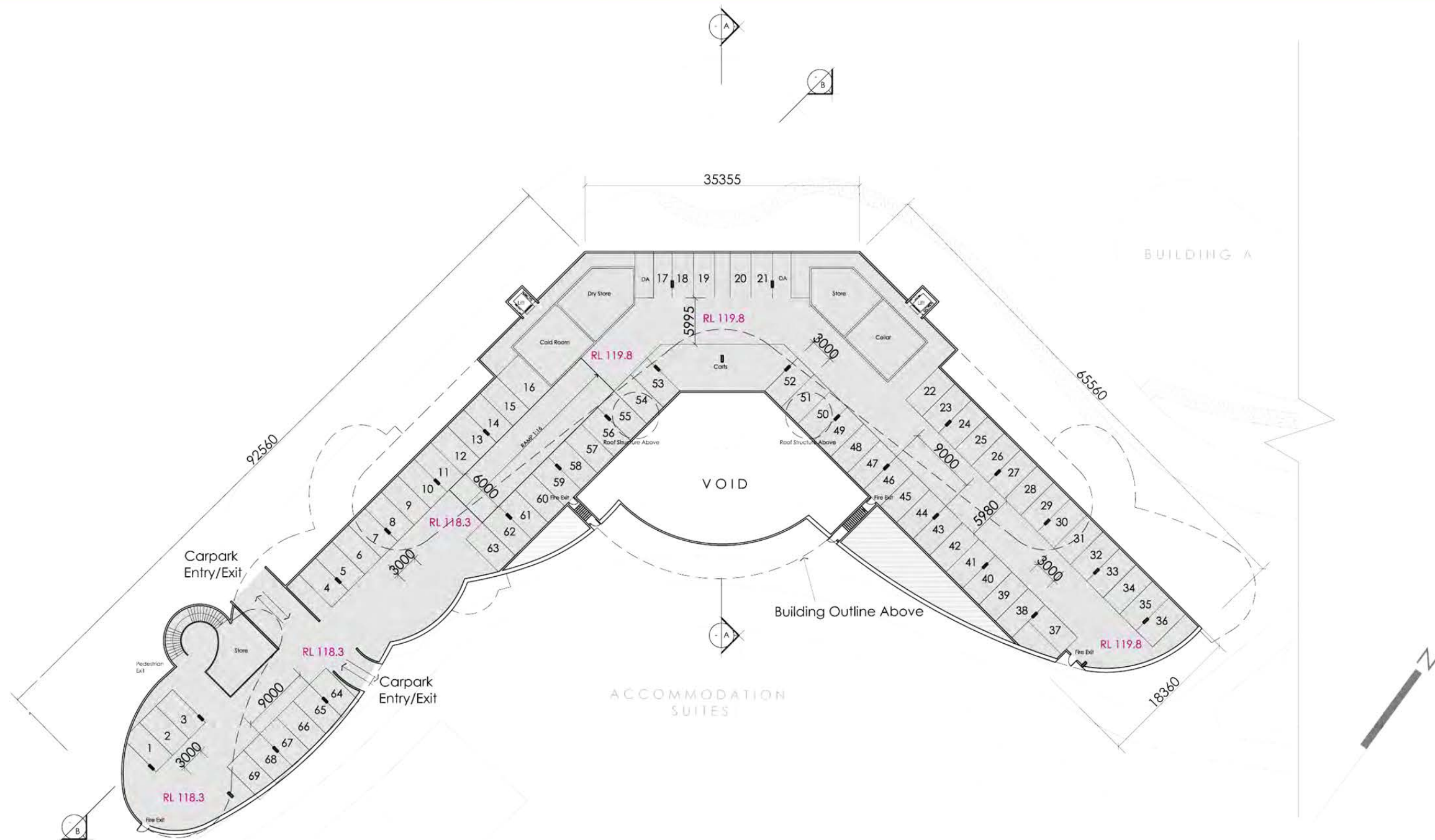
GFA: 1388 m²
 BUILDING C (BIRDWING BUILDING)
 UPPER FLOOR PLAN 1:500
 CONFERENCE FACILITIES



Job #	267-01
Drawing	SP_BC_02
Date	2016.09.21
Revision	C



IPA ISSUE



BUILDING C (BIRDWING BUILDING)
UPPER BASEMENT CARPARK 1:500
69 CARPARK SPACES

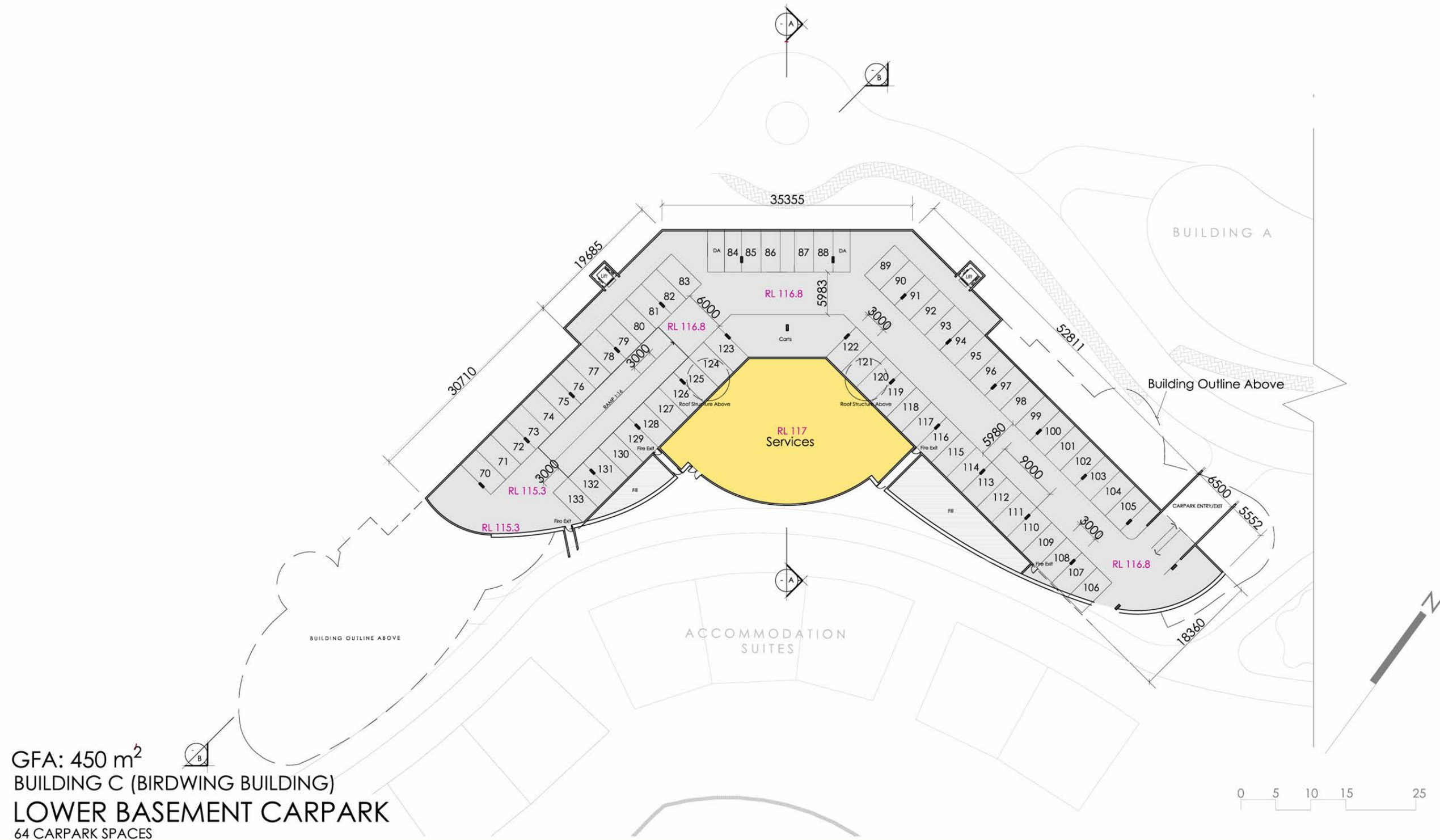


HEIDI MEYER
CREATIVE DIRECTOR

Job #	267-01
Drawing	SP_BC_03
Date	2016.09.21
Revision	C



IPA ISSUE



GFA: 450 m²
 BUILDING C (BIRDWING BUILDING)
 LOWER BASEMENT CARPARK
 64 CARPARK SPACES

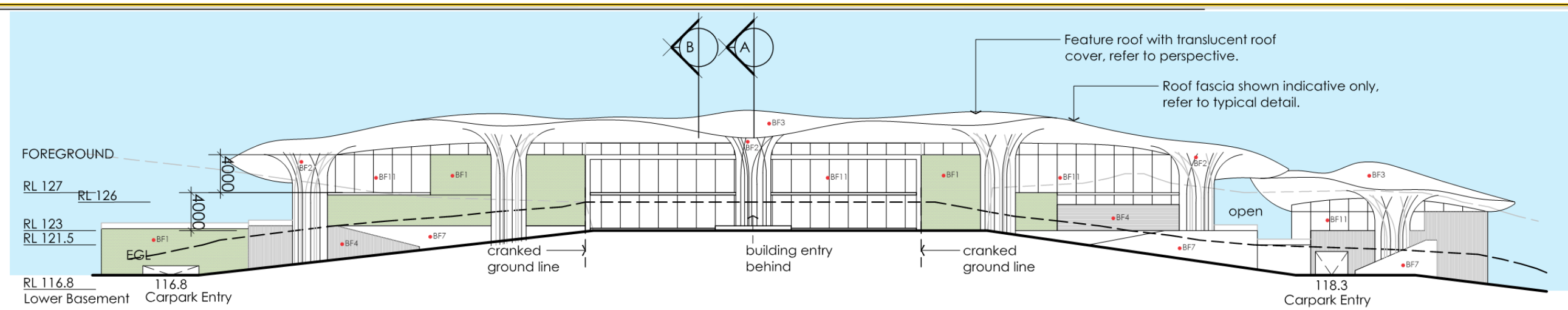


HEIDI MEYER
 CREATIVE DIRECTOR

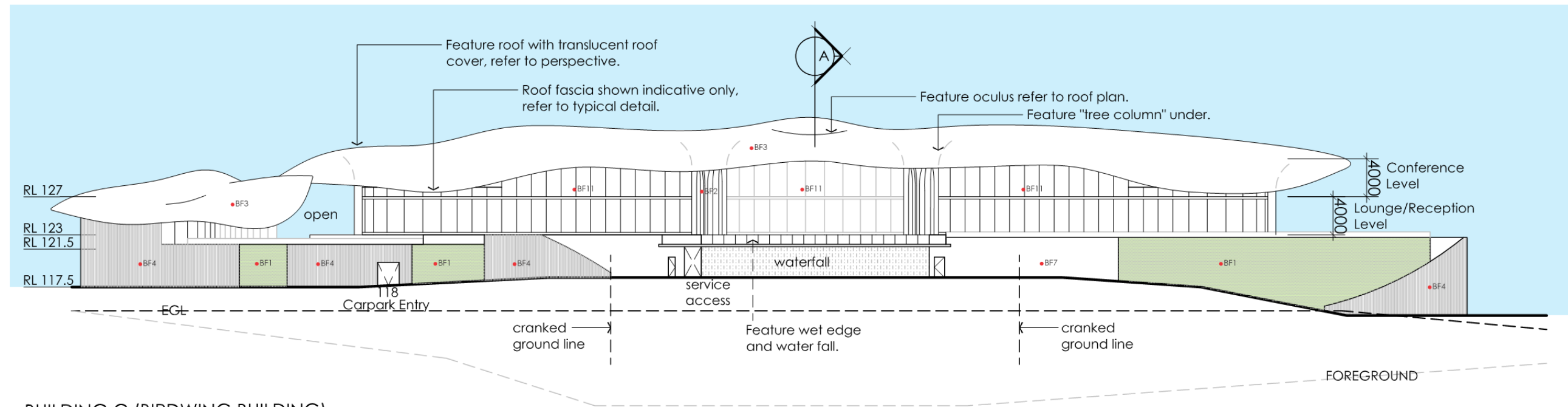
Job # 267-01
 Drawing SP_BC_04
 Date 2016.09.21
 Revision C



IPA ISSUE



BUILDING C (BIRDWING BUILDING)
NORTH WEST ELEVATION 1:400

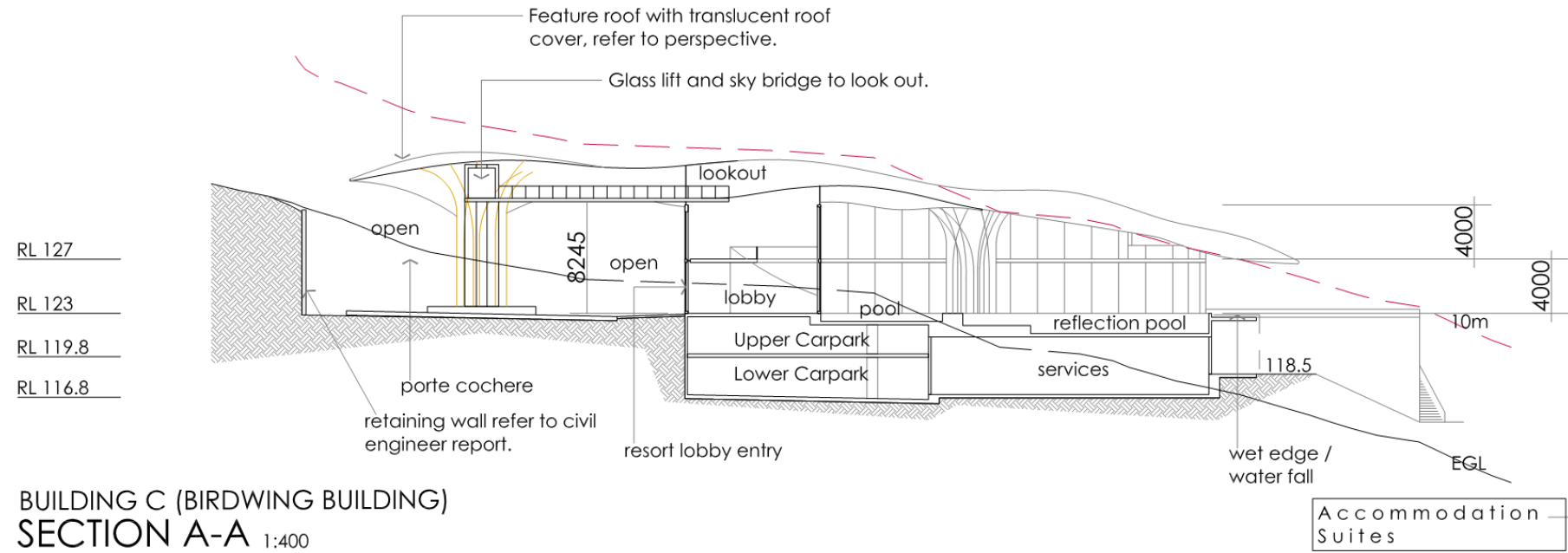


BUILDING C (BIRDWING BUILDING)
SOUTH EAST ELEVATION 1:400

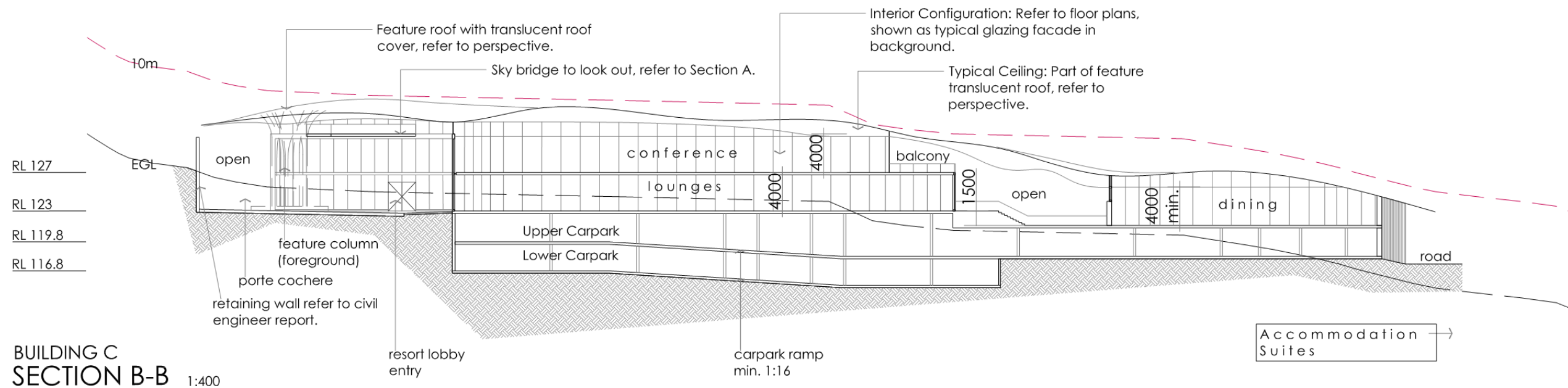
• BF1-12 REFER TO FINISH PALETTE (SP_FP_SERIES)



Job #	267-01
Drawing	SP_BC_06
Date	2016.09.21
Revision	D



BUILDING C (BIRDWING BUILDING)
 SECTION A-A 1:400



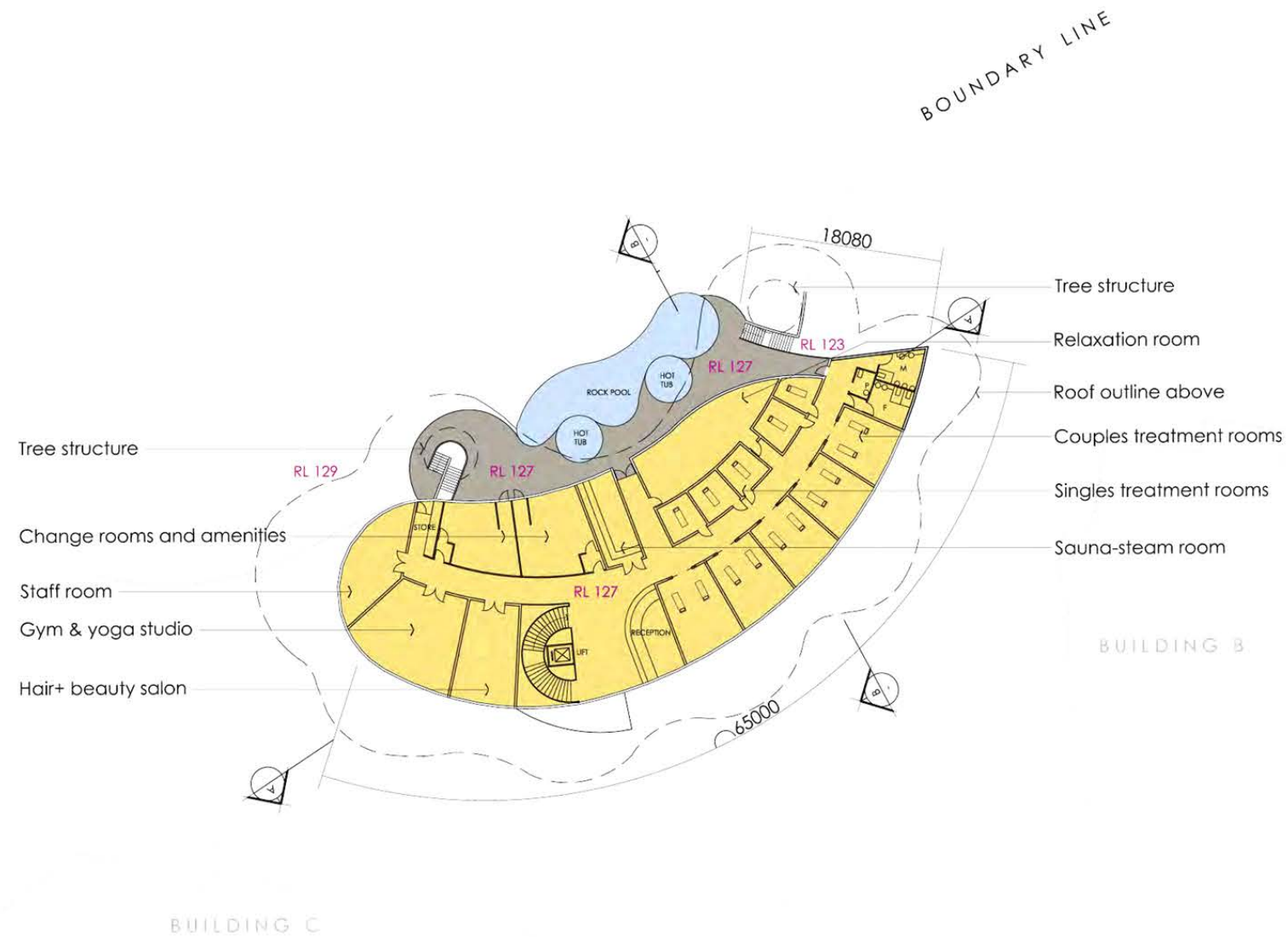
BUILDING C
 SECTION B-B 1:400



Job#	267-01
Drawing	SP_BC_08
Date	2018.02.12
Revision	E



IPA ISSUE



GFA: 1015 m²
BUILDING A
UPPER FLOOR PLAN 1:500

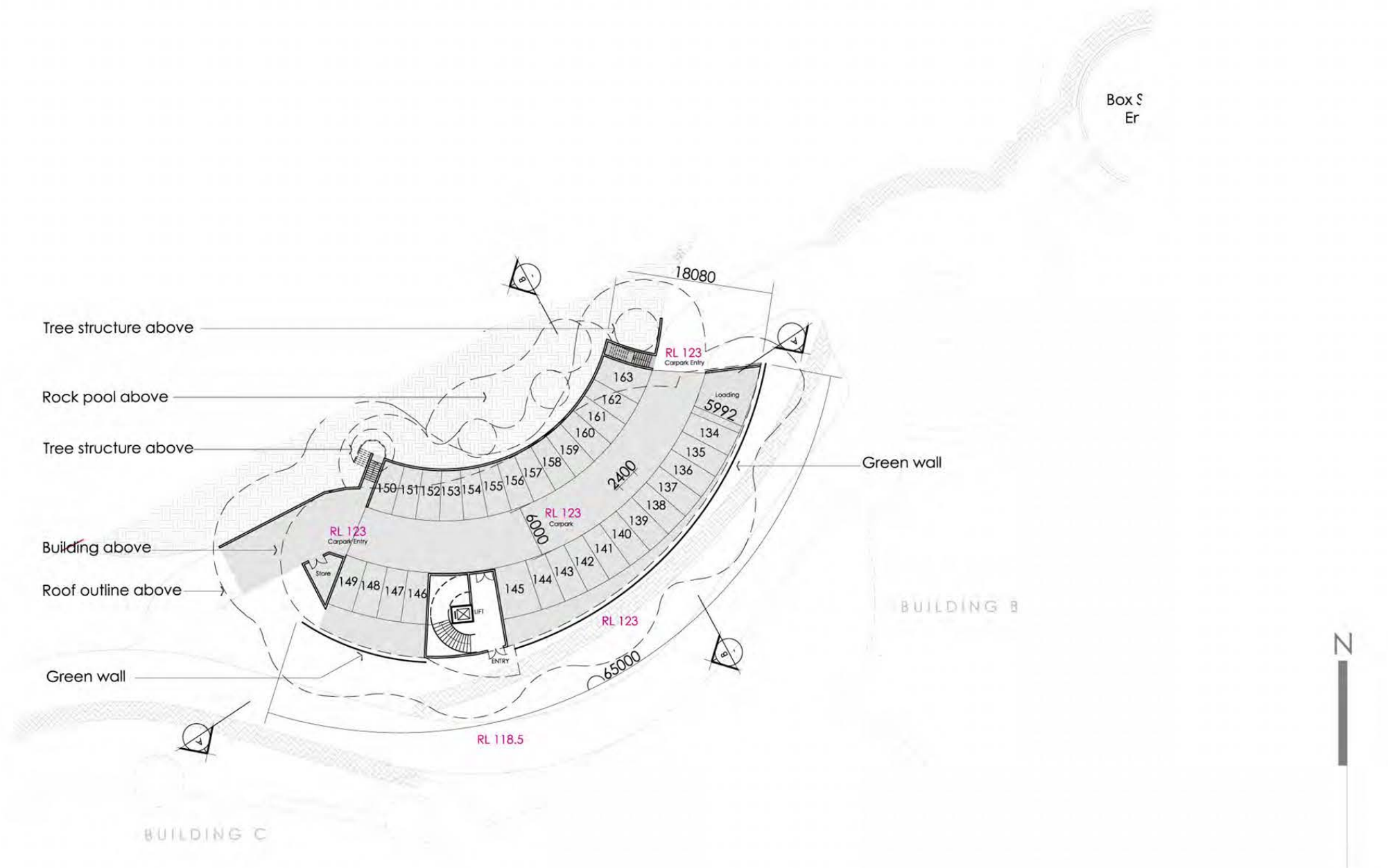


HEIDI MEYER
CREATIVE DIRECTOR

Job #	267-01
Drawing	SP_BA_02
Date	2016.09.22
Revision	D



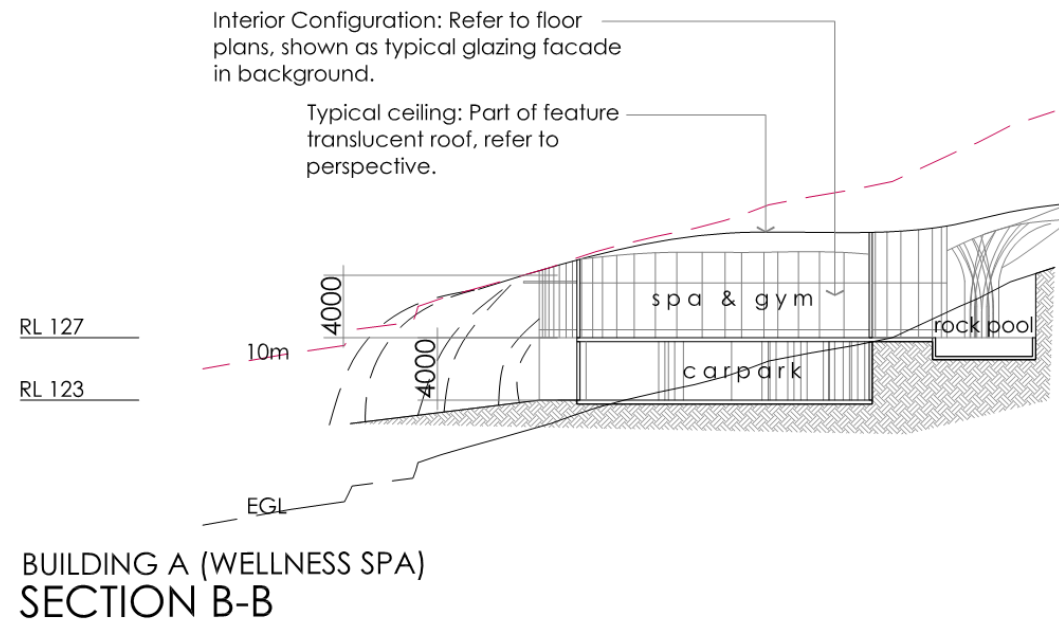
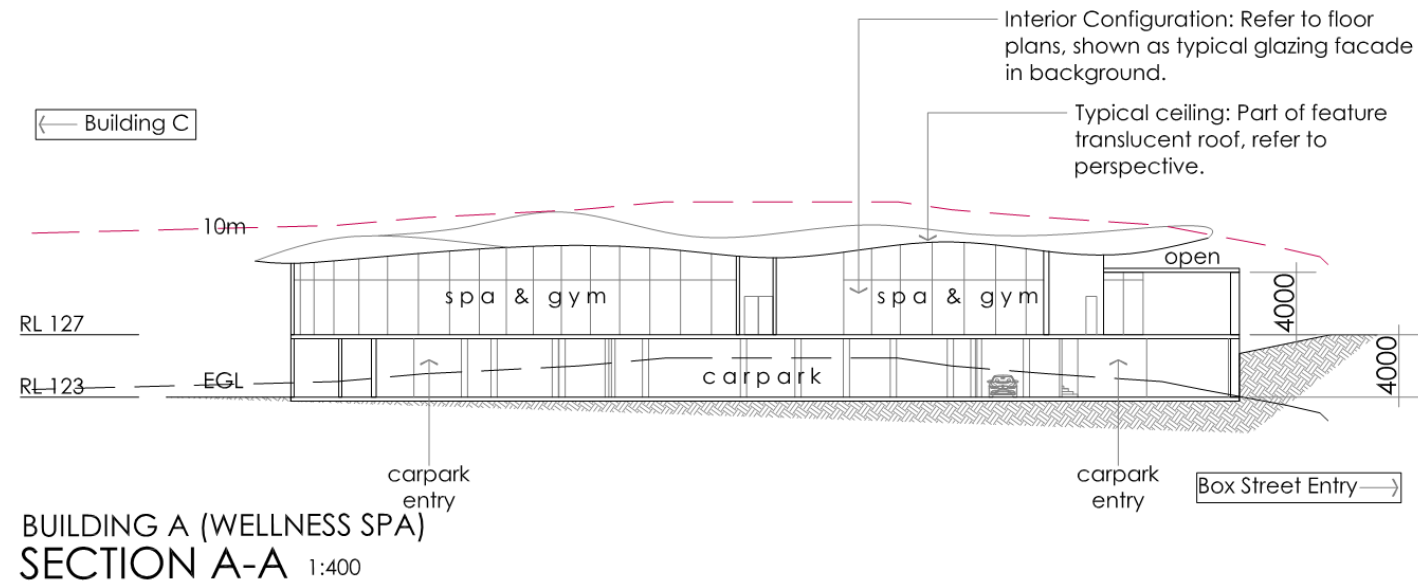
IPA ISSUE



BUILDING A (WELLNESS SPA)
GROUND FLOOR PLAN 1:500
30 PARKING SPACES



Job #	267-01
Drawing	SP_BA_01
Date	2016.09.22
Revision	D



Job#	267-01
Drawing	SP_BA_05
Date	2018.02.12
Revision	F



IPA ISSUE



KITCHEN & DINING GFA: 226 m²
 BUILDING B (SERVICES BUILDING & GLASSHOUSE CAFE)
 GROUND FLOOR PLAN 1:500



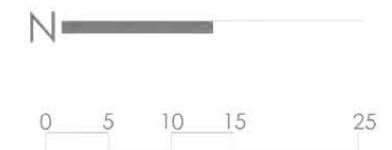
Job # 267-01
 Drawing SP_BB_01
 Date 2016.09.16
 Revision D



IPA ISSUE



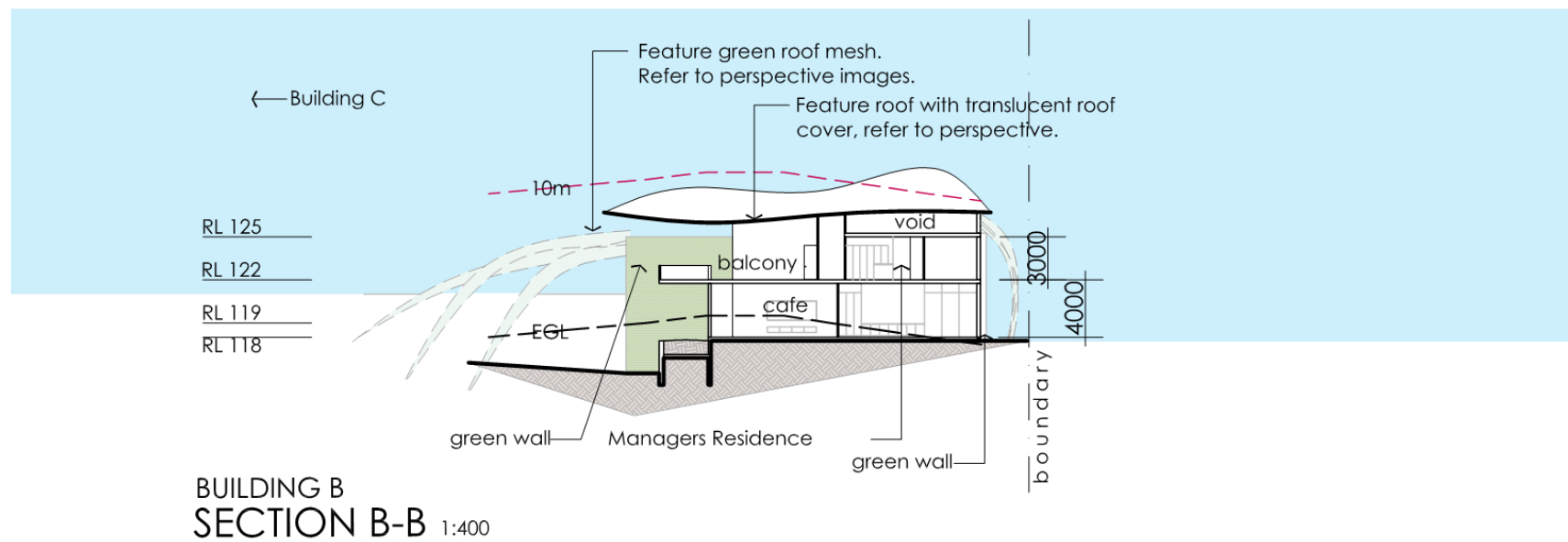
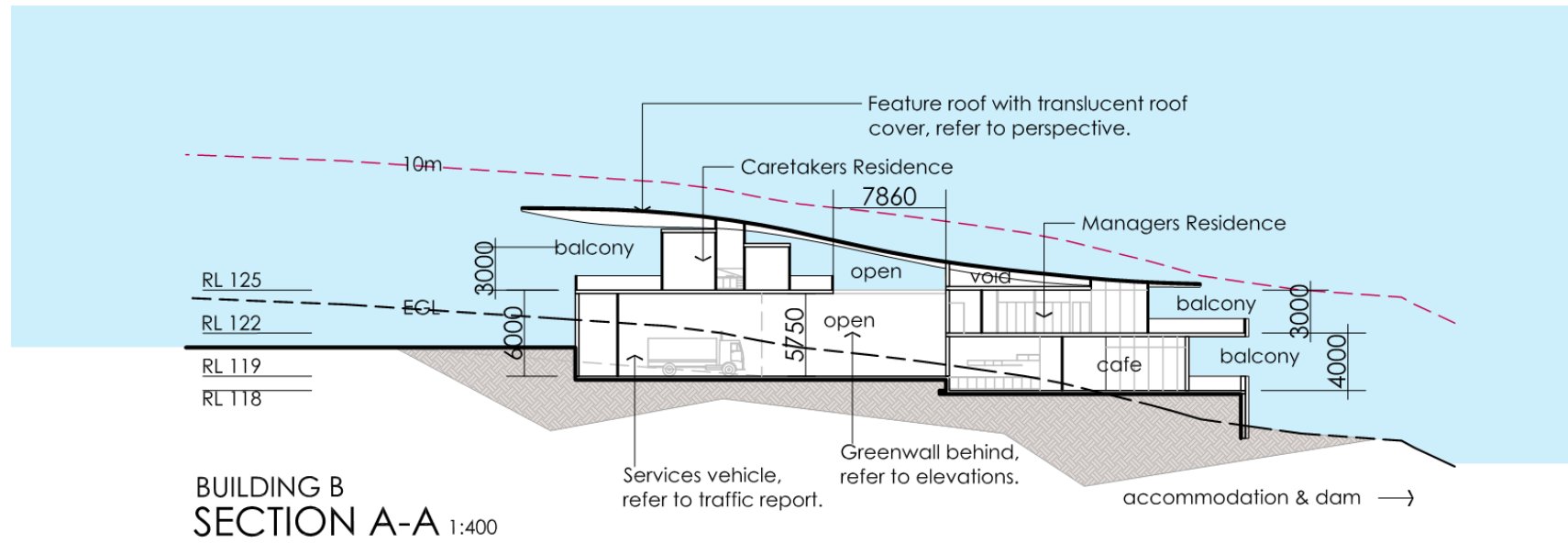
GFA: 318 m²
BUILDING B (CARETAKERS & MANAGERS RESIDENCE)
UPPER FLOOR PLAN 1:500



Job #	267-01
Drawing	SP_BB_02
Date	2016.09.16
Revision	D



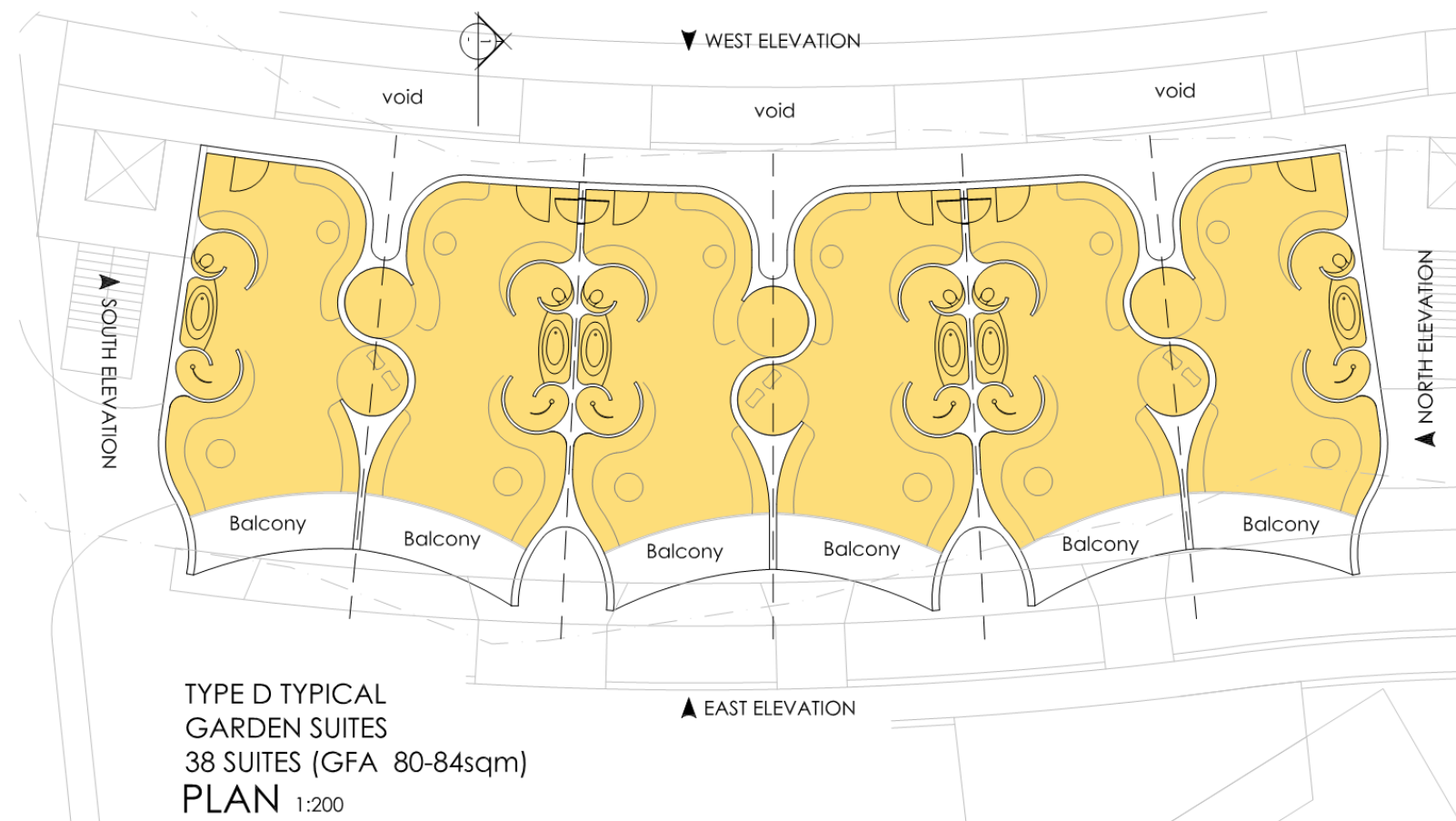
IPA ISSUE



Job #	267-01
Drawing	SP_BB_05
Date	2016.09.28
Revision	E



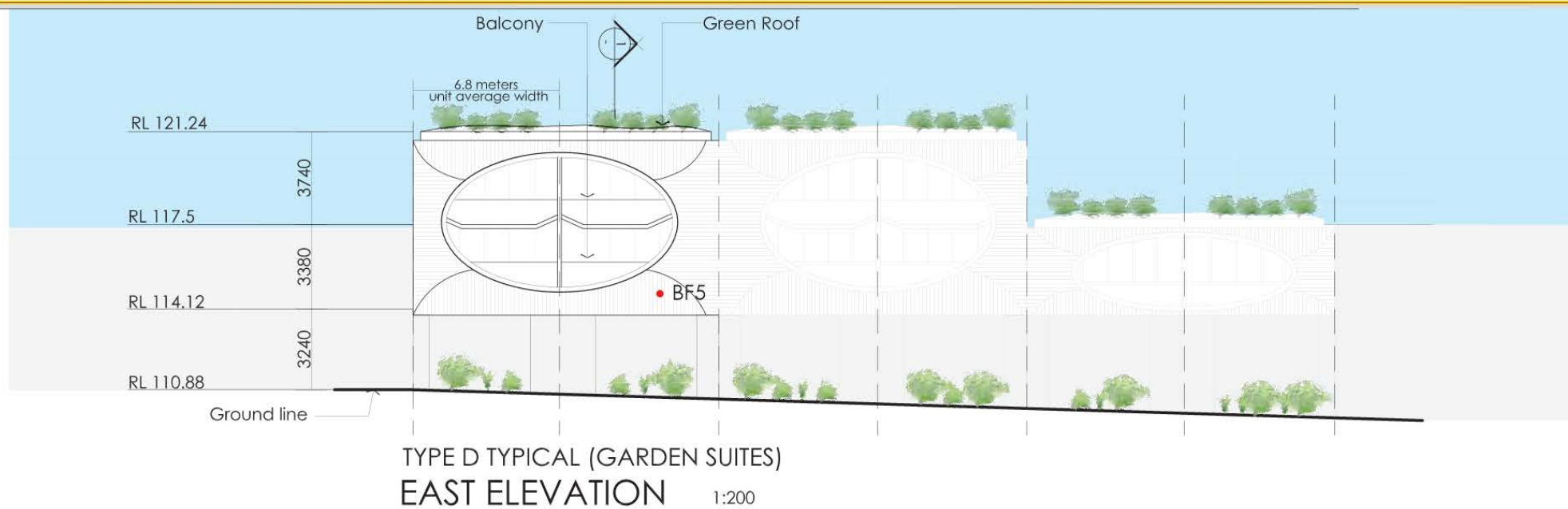
IPA ISSUE



Job #	267-01
Drawing	SP_TD_01
Date	2016.09.30
Revision	C



IPA ISSUE



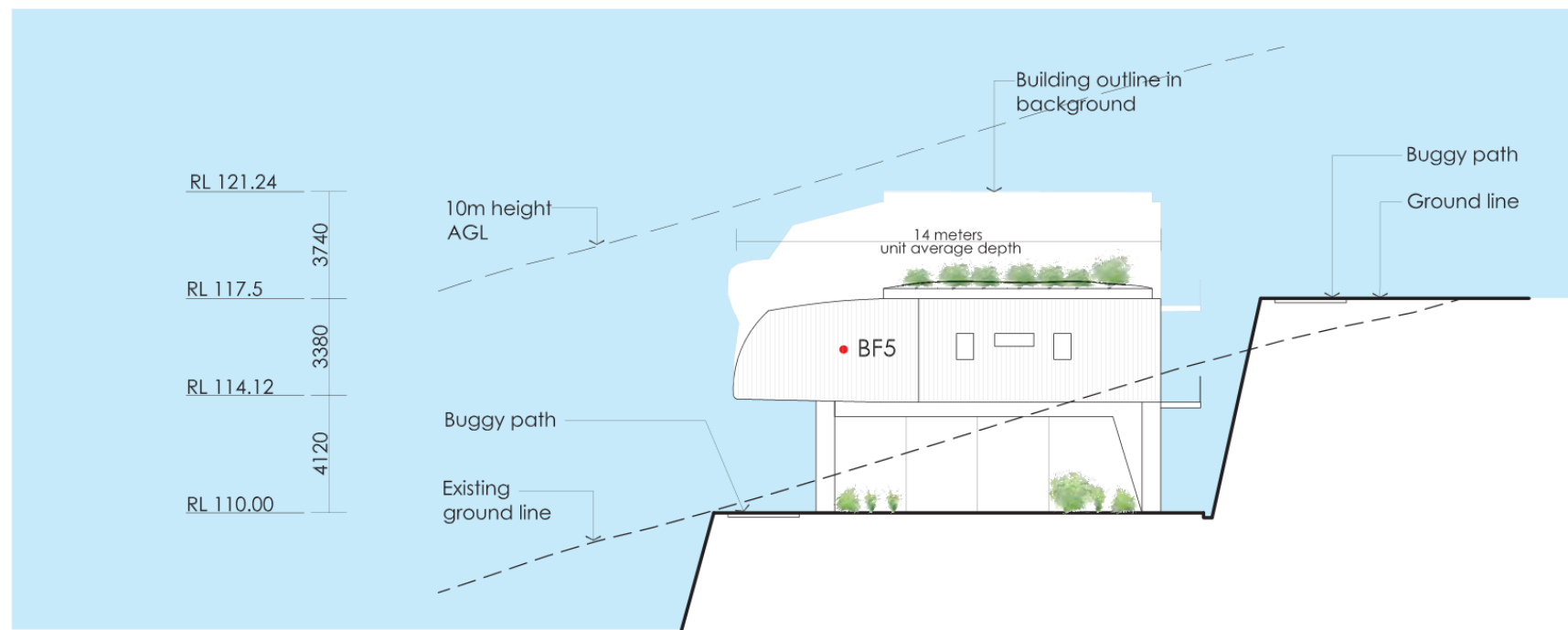
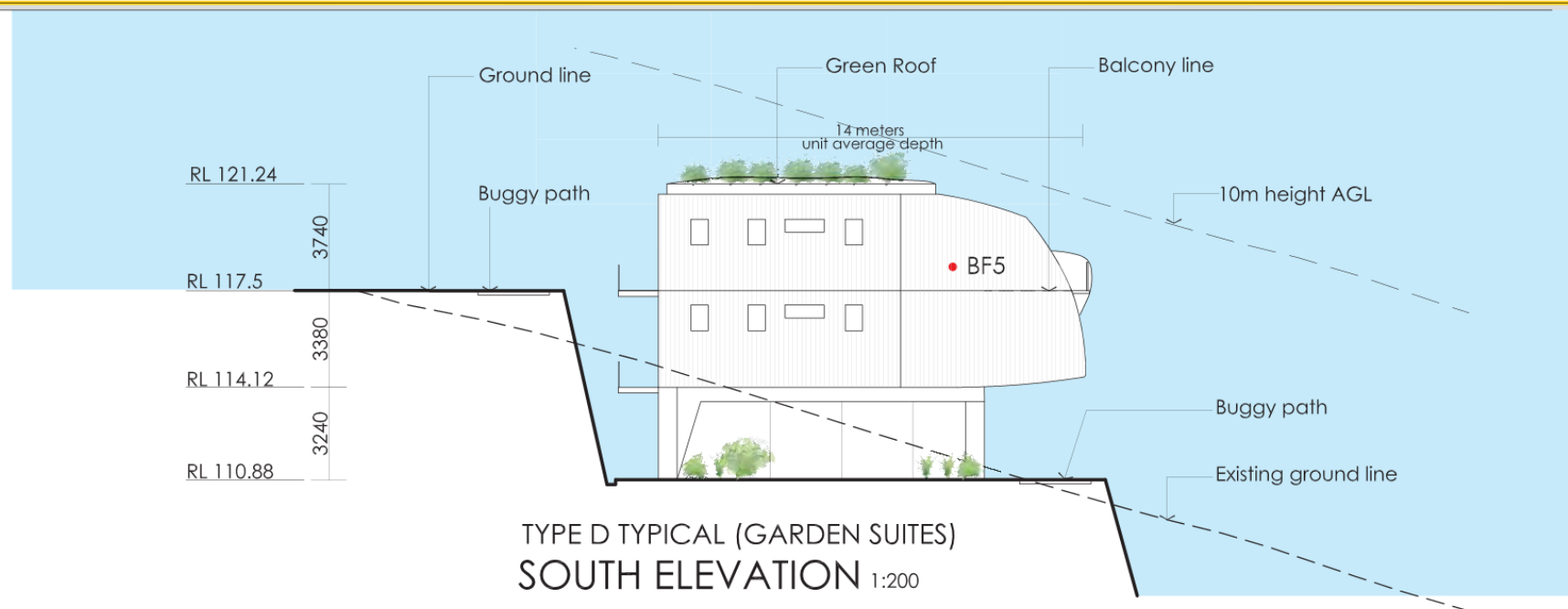
• BF1-12 REFER TO FINISH PALETTE (SP_FP_SERIES)



Job #	267-01
Drawing	SP_ID_02
Date	2016.09.30
Revision	D



IPA ISSUE



• BF1-12 REFER TO FINISH PALETTE (SP_FP_SERIES)



Job #	267-01
Drawing	SP_ID_03
Date	2016.09.30
Revision	D