

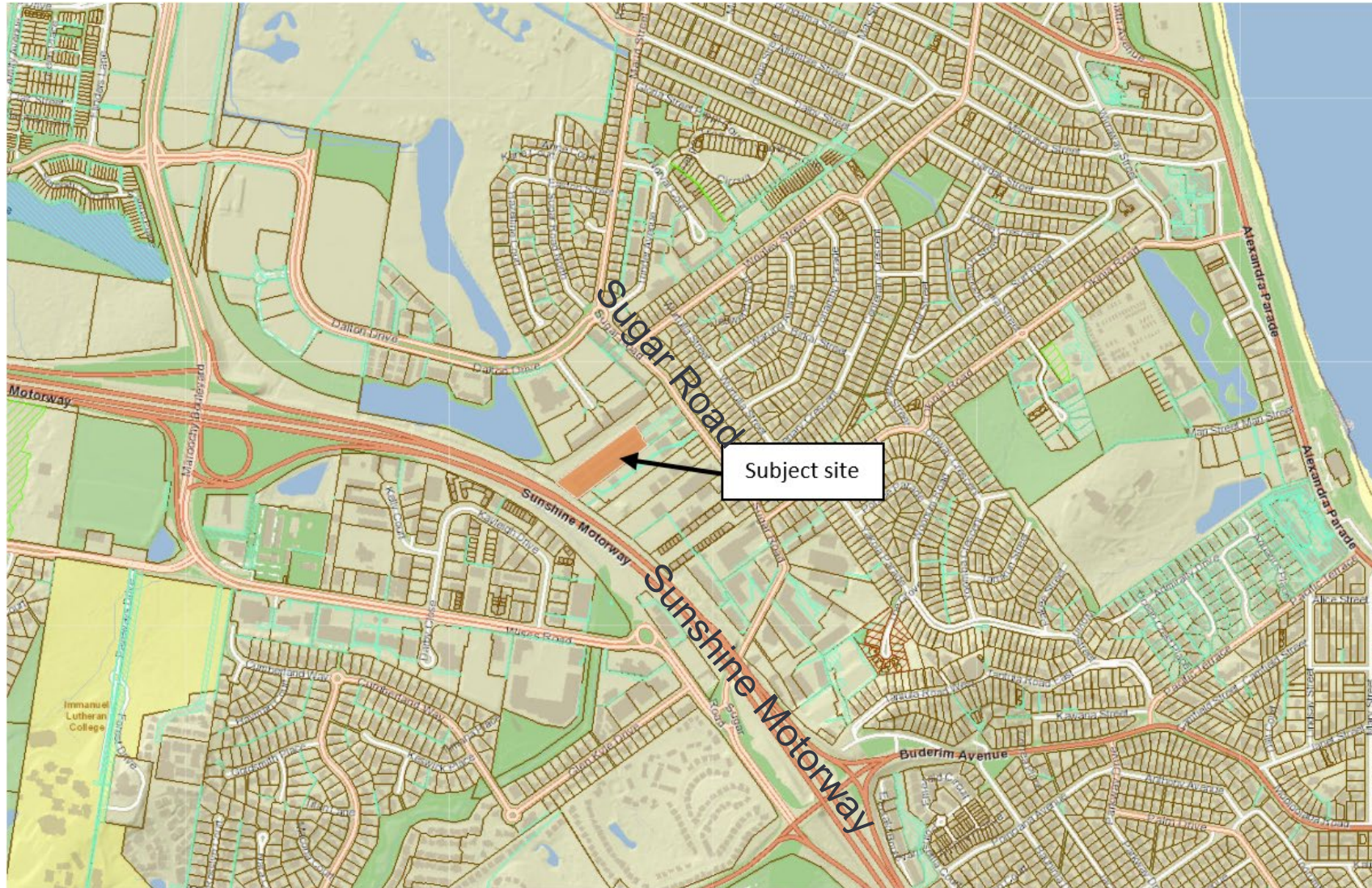


Councillor Ordinary Meeting – December 2020

Item 8.2

Development Permit for Building Works assessable against
the *Sunshine Coast Planning Scheme 2014* (30m
Flagpole)

Site Location



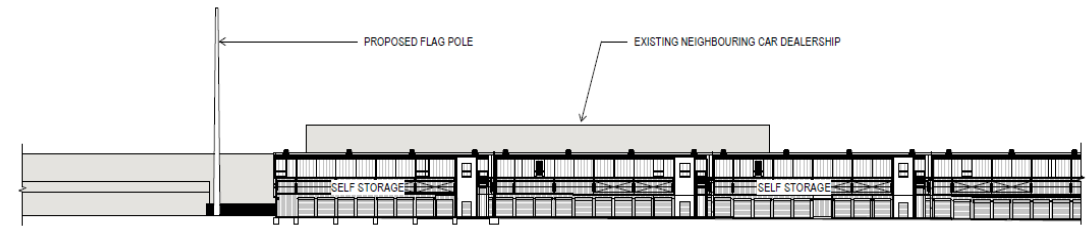
Site Location and Aerial



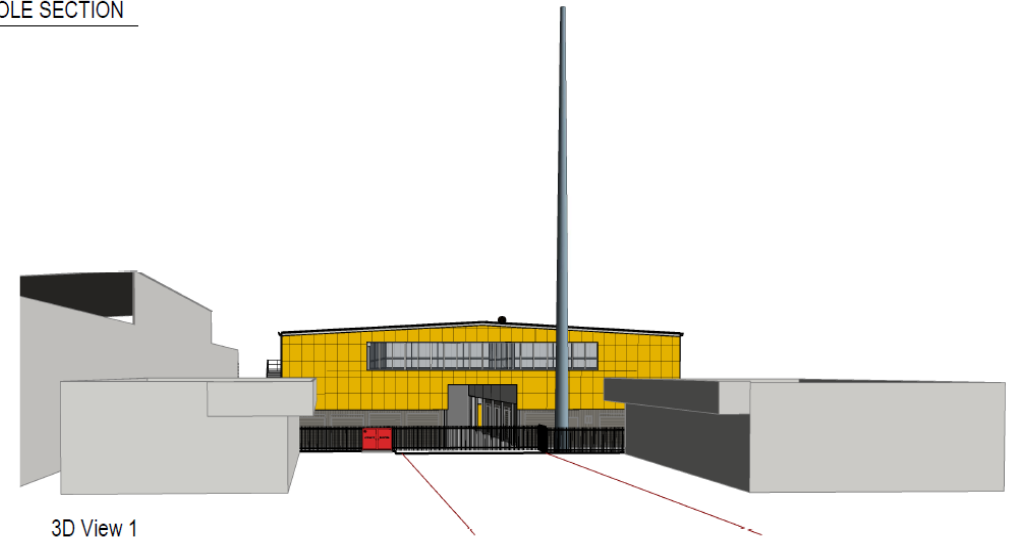
Proposed Pole Location

Key Assessment Considerations Amenity and Character Impacts

- The flagpole would be visible from a variety of identified vantage points
- The vertical height of the flagpole is distinctly different to the predominant built form character of the area
- The structure results in additional visual clutter impacting on visual amenity and negatively contributes to the existing visual pollution
- The structure would be a new feature in the viewshed of residential areas



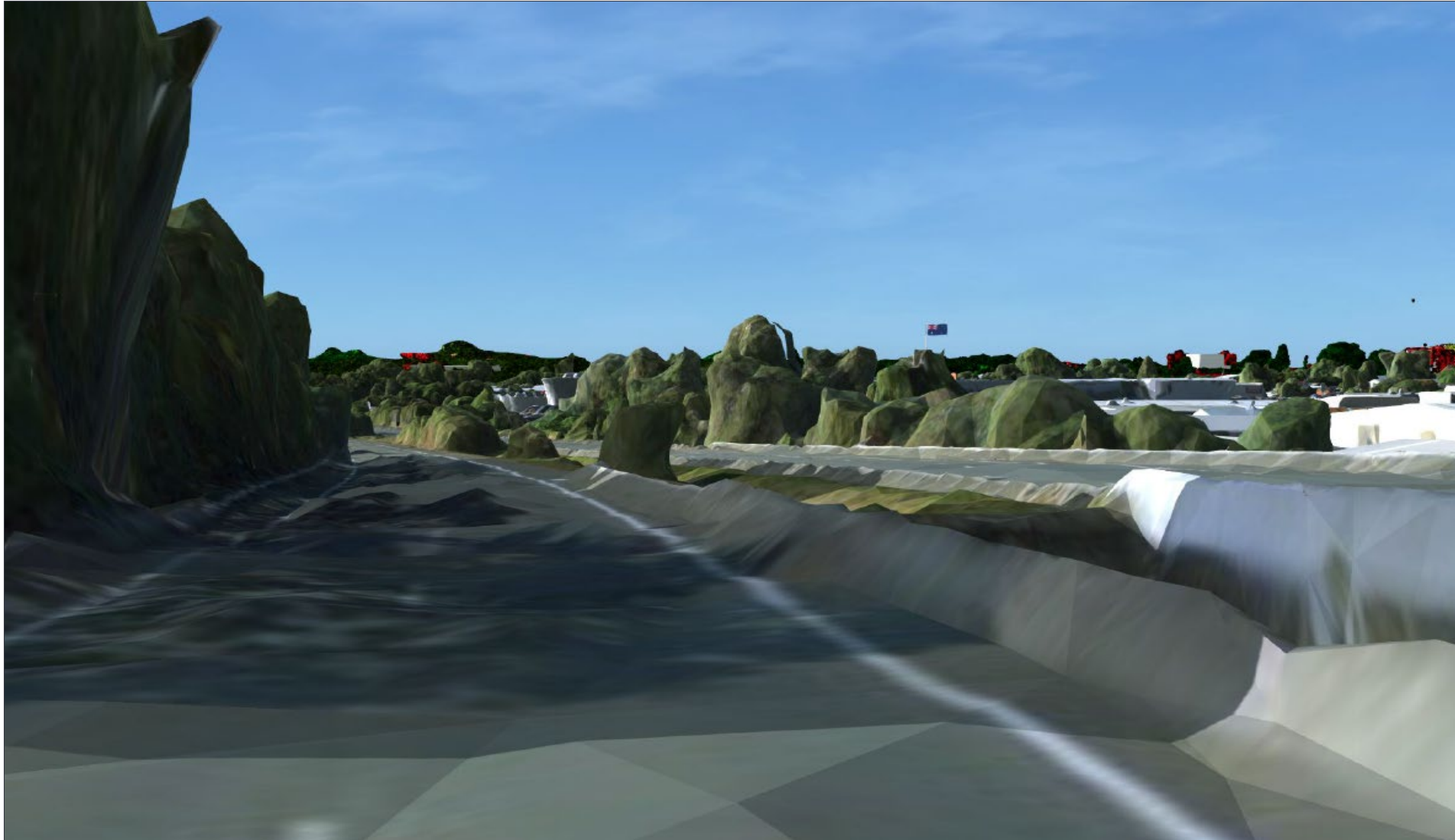
3 FLAG POLE SECTION
(A1) 1:500



Visual Amenity Assessment and Photomontages



Visual Amenity Assessment and Photomontages



View from the Sunshine Motorway travelling North (Distance: 335m)

Visual Amenity Assessment and Photomontages



View from Sugar Road (Distance: 149m)

Visual Amenity Assessment and Photomontages



View from Newspaper Place (Distance: 141m)

Visual Amenity Assessment and Photomontages



View from Hazeltine Court looking South-east (Distance: 348m)

Visual Amenity Assessment and Photomontages



Visual Amenity Assessment and Photomontages



Visual Amenity Assessment and Photomontages



View from Wises Road looking North (Distance: 434m)

Visual Amenity Assessment and Photomontages



View from Buderim escarpment – Rim Road (Distance: 1750m)

Recommendation

That Council:

REFUSE the application due to the proposal not complying with the relevant provisions in the *Sunshine Coast Planning Scheme 2014* with respect to the protection of local amenity and character

Thank you.



See council's website for further details
www.sunshinecoast.qld.gov.au