

Project number: H3747

## Brisbane Road Upgrade

Stages 2 and 3

Mooloolaba Transport Corridor Upgrade

**REVISED Dates.** Night works - Asphalt (bitumen) road resurfacingWednesday 24, Thursday 25 and Sunday 28 May evenings 6pm to 6am  
*All works are subject to weather and construction material/equipment availability*

Brisbane Road, Walan Street, Kapala Street, and Hancock Street, Mooloolaba



Temporary changes to traffic conditions including property access, on street parking and detours. Traffic control in attendance

### Construction overview

Asphalt (bitumen) works are progressing well for Stages 2 and 3 of the Brisbane Road Upgrade.

Based on progress of the past two nights, some changes to the asphalt schedule must be made.

Please see the maps on page 3 of this notification for these changes.

### Temporary changes to traffic conditions

Two way traffic flow (one lane each way) will be maintained along Brisbane Road on the relevant evenings using the open traffic lanes or via signed detours.

In the case of Walan Street, Hancock Street and Kapala Street works, signed detours will be in place.

While pedestrian access to residences and businesses will be maintained, in cases where no alternative access is available, vehicle access to/from adjacent properties will **not be possible** during these works.

On street parking will be temporarily unavailable in the road resurfacing areas.

If your property is affected, a construction notification will be delivered to your letterbox. Where possible, the construction team will also meet with relevant parties.

Should 24/7 access to your vehicle be required (for example, businesses, shift workers, transportation arrangements for family or friends, travel etc), the project team recommends parking your vehicle **outside of the construction area** to enable guaranteed access.

Bus stops within the road resurfacing zones will not be in operation. Passengers will be redirected to alternative, nearby stops via signage.

Traffic control and detours will be in place.

Please read this notice carefully for details.

*NB: These works are heavily weather dependent. In the case of rain, works will be postponed.*

All information contained in this communication is accurate at the time of distribution however works and dates are subject to change due to circumstances outside of Sunshine Coast Council's control.

## Road resurfacing (asphalt) program

Vehicle access to properties in the asphalt areas will **not be available** on the nights nominated. Vehicle access will be available during the day.

**REVISED DATES: Wednesday 24 and Thursday 25 May, 6pm to 6am, Brisbane Road Northbound from new Mayes Canal Bridge to 100 metres north of the Walan Street intersection, section of Kapala Street and partial Walan Street**

One traffic lane each way operating on Brisbane Road

**REVISED DATE: Sunday 28 May, 6pm to 6am, remaining areas of Walan Street and Hancock Street, Mooloolaba**

No vehicle access through the worksite.

Detours will be operating

## What to expect during these works?

The construction team will make every effort to minimise impacts to the community however nearby residents and businesses can expect intermittent construction noise including the operation of heavy machinery and large vehicles.

For residents sensitive to the smell of asphalt, please consider closing blinds and windows and using fans or air conditioning where possible.

Please allow an extra 10 minutes of travel time when travelling to destinations in/near the construction zone.

We thank our community for your ongoing patience and understanding.

## Register for project updates and/or contact the project team

To register for construction updates, email your details to [mtcu@sunshinecoast.qld.gov.au](mailto:mtcu@sunshinecoast.qld.gov.au)

For further information, you can contact the project team on 1800 531 597 (during office hours, Monday to Friday 8.30am – 5pm) or email [mtcu@sunshinecoast.qld.gov.au](mailto:mtcu@sunshinecoast.qld.gov.au)

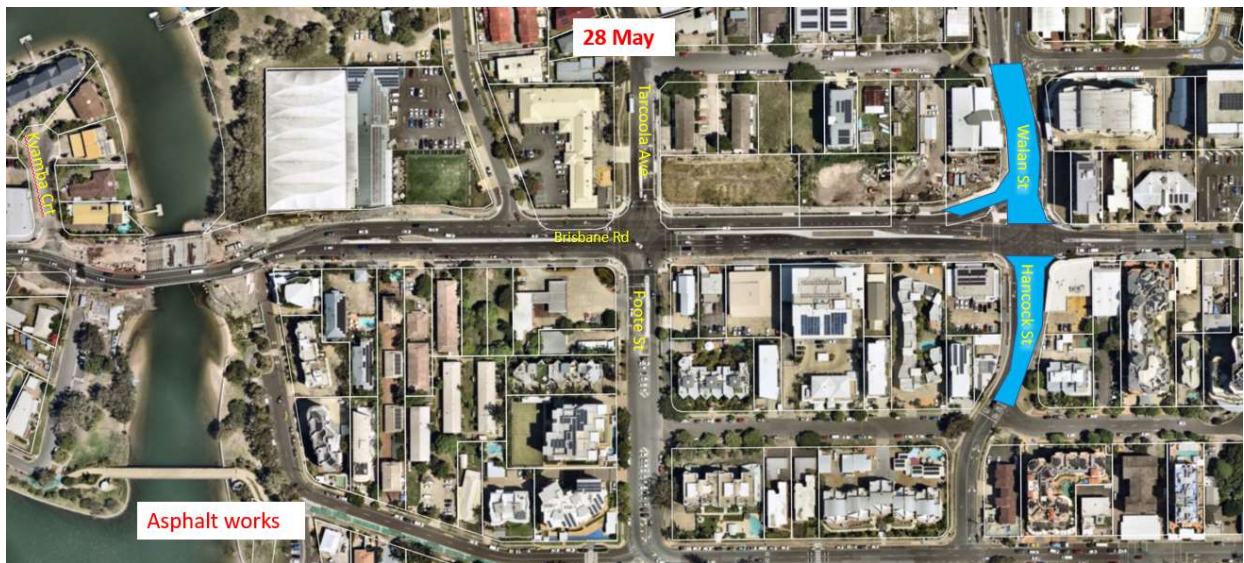


**Figure 1. Night works. Wednesday 24 and Thursday 25 May, 6pm to 6am**  
**Brisbane Road Northbound (yellow section) from new Mayes Canal Bridge to 100 metres north of the Walan Street intersection, section of Kapala Street and partial Walan Street**

One lane of traffic operating each way along Brisbane Road

No vehicle access to properties or on street parking available in the highlighted area

No bus stops operating (passengers will be redirected to nearby stops).



**Figure 2. Night works. Sunday 28 May, 6pm to 6am, Walan Street and Hancock Street, Mooloolaba**

No vehicle access to properties or on street parking available in the highlighted area

No bus stops operating (passengers will be redirected to nearby stops)

Detours will be operating