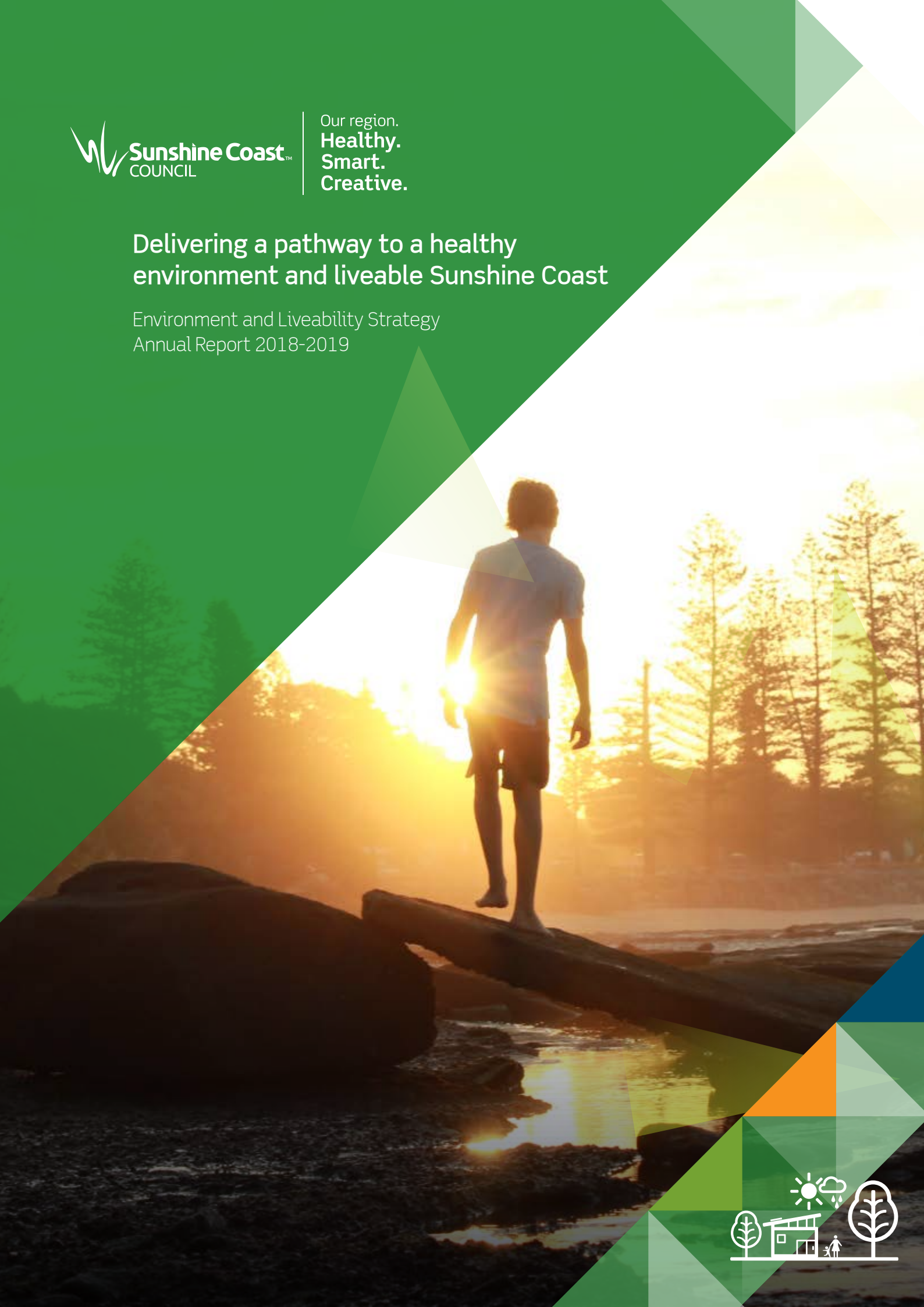




Our region.
Healthy.
Smart.
Creative.

Delivering a pathway to a healthy environment and liveable Sunshine Coast

Environment and Liveability Strategy
Annual Report 2018-2019





Message from the Mayor

Our Sunshine Coast Council continues to deliver a healthy environment and liveable region – which can be enjoyed by our residents today and those which call the region home in the future.

We recognise that our environment and our lifestyle are two of our greatest assets, and we intend to keep it that way.

After all, our natural environment is one of our region's most defining features and central to our values as a community and our Sunshine Coast way of life.

Our council is investing in and delivering an extensive range of programs and services, often in partnership with dedicated volunteers across our community, to preserve our outstanding natural environment and ensure the Sunshine Coast remains a great place to live.

Our Environment and Liveability Strategy provides the policy blueprint to enable our Sunshine Coast to continue to be one of the greenest, cleanest and most liveable regions in Australia.

The strategy is a great example of council's forward thinking and real actions – taking advantage of opportunities today, while looking ahead to 2041. With our strategy, we're creating a legacy that will benefit our community for many years to come.

In 2018-2019, we continued to strengthen our healthy, smart and creative region in all the right ways. Our council isn't just talking about it – we are delivering on the ground and we are seeing the results. We're preserving and enhancing our natural environment, while promoting a better quality of life through more accessible and well-connected built environments.

At this time, we are also pleased to be releasing our annual Environment Levy and Organisational Environmental Sustainability Benchmarking reports, which further demonstrate some of the initiatives, programs and projects being delivered across our community on our journey to a healthy environment and liveable Sunshine Coast.

I encourage you to visit council's website to learn more about the extensive work our council is delivering to maintain and preserve our outstanding natural assets and the liveability of our region.

Mayor Mark Jamieson

Acknowledgement of Country

Sunshine Coast Regional Council acknowledges the traditional Country of the Kabi Kabi Peoples and the Jinibara Peoples of the coastal plains and hinterlands of the Sunshine Coast and recognise that these have always been places of cultural, spiritual, social and economic significance. We wish to pay respect to their Elders – past, present and emerging – and acknowledge the important role Aboriginal and Torres Strait Islander people continue to play within the Sunshine Coast community.

Council is committed to ongoing communications and consultation with the Traditional Owners and the broader Aboriginal and Torres Strait Islander community of the Sunshine Coast in the implementation of the strategy.

© Sunshine Coast Regional Council 2009-current.

Sunshine Coast Council™ is a registered trademark of Sunshine Coast Regional Council.

Reference document

This document should be cited as follows:

Sunshine Coast Regional Council. 2019.

Sunshine Coast Environment and Liveability Strategy Annual Report 2018-2019.

Disclaimer

Information contained in this document is based on available information at the time of writing. All figures and diagrams are indicative only and should be referred to as such. While the Sunshine Coast Regional Council has exercised reasonable care in preparing this document it does not warrant or represent that it is accurate or complete. Council or its officers accept no responsibility for any loss occasioned to any person acting or refraining from acting in reliance upon any material contained in this document.

A snapshot of our achievements

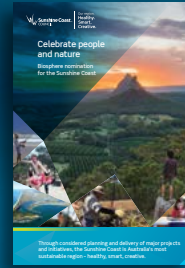
Build the resilience of the region

We delivered a **Disaster Resilience Plan** to ensure the safety of our community - it was a **Queensland-first**.



Celebrate people and nature

We progressed a **UNESCO Biosphere nomination** to have our region's sustainability story internationally recognised.



Create great places and spaces

The **Baringa Community Centre** opened to provide a vibrant place for community, creative and event activities.



A sustainable Sunshine Coast through social infrastructure

Caloundra Indoor Sports Stadium's new sport lighting system made a **22% energy saving**, while **Kawana Sports Precinct** upgraded its field and clubhouse lighting and had a **27% reduction in electricity**.

Expanding our green spaces

We secured **more than 100 hectares** of new lands for conservation and recreation purposes.



Engaging with our younger generation

Our **Kids in Action Program** - funded by the Environment Levy - brought more than **300 students** from 26 schools together with First Nation representatives to connect with, and care for, Country.



Community events for a liveable, sustainable and resilient future

We continue to deliver our **Living Smart Program** and also held **events and activities for our community**.

- World Environment Day Festival
- Horizon Festival

- National Clean Technologies Conference and Exhibition
- Sunshine Coast Open House
- Fabric Program
- Considered Design Resourceful Living Exhibition and Talks
- Environment and Liveability Photography Exhibition.

Our services contribute to a liveable Sunshine Coast

More than **1.4 million** visitors to our local libraries

More than **167,000** attendees at **Venue 114** and **The Events Centre, Caloundra** events

More than **13,200** garbage trucks of waste **diverted from landfill**

2,905 metres of natural and constructed shoreline protection works

250,000 visitors to our **6** holiday parks

Adventure at your finger tips

We launched the **Adventure Sunshine Coast** website to showcase more than **150** free, self-guided walking, cycling, mountain biking, horse riding and canoeing activities to connect nature and people.



Sustainable design for our built environment

We unveiled the **Sunshine Coast City Hall** design which incorporates sustainable building design outcomes.



We delivered your **Environment Levy Program** to support land acquisitions, on-ground activities, and partnerships that protect and enhance our natural environment.

Our Resilient Coast. Our Future.

Proactive planning for the potential impacts of climate change

We progressed—in partnership with our community—our long-term strategy to help **manage the impacts of coastal hazards.**



Building our knowledge

The **Doonan Open Data Expo** demonstrated how we can use technology to care for, and restore, our environment.

We won a handful of awards



Council won the **Strategic Planning Award** in recognition of our **Environment and Liveability Strategy** at the Parks and Leisure Australia Awards of Excellence.



The 2017 Sunshine Coast Horizon Festival was awarded the **Best Achievement in Marketing, Communication or Sponsorship** at the Australian Event Awards.



Council's Feral Animal Education and Control Team received the **Queensland Pest Animal Team Award for Excellence in Pest Management** - an award initiated through The Weed Society of Queensland.

Our Bushcare Program supported more than 40 groups to conserve and restore our natural bushland

16.5 tonnes of waterway litter removed

More than 40km of new pathways

20,000+ people participated in Healthy Sunshine Coast programs

The Environment and Liveability Strategy



Our strategy was adopted in September 2017. This Annual Report showcases our second year of implementation.

What is the purpose of the strategy?

The strategy provides long-term strategic direction to guide growth and shape the Sunshine Coast for future generations to 2041.

It focuses on the natural environment and how it can be preserved and enhanced, as well as the liveability of the region. It enables a good quality of life for all residents, while supporting a strong economy in an accessible and well-connected built environment.

Why is it needed?

In this rapidly changing world there are many challenges and opportunities for our much-loved Sunshine Coast way of life. We face an increasing population, changing climate, economic growth and emerging technologies.

The strategy helps us to navigate through these challenges while harnessing opportunities. Its integrated and long-term approach to guiding development of the Sunshine Coast offers clarity, inspiration and direction.

The strategy is a forward-looking document and seeks to do things differently.

Our progress

We use annual performance measures to help us monitor and track progress.

TARGET	BASELINE	2018 - 2019	2018 - 2019 OUTCOME
No loss of the Regional Inter-urban Break in its current extent	32,034 ha	32,034 ha	No change to the current extent
Hectares of land per 1000 residents acquired through Environment Levy for conservation and preservation purposes maintained	9.6 ha per 1000 residents	10.7 ha per 1000 residents*	56 ha acquired
Hectares of land per 1000 residents for sport and recreation purposes maintained	4.74 ha per 1000 residents	4.22 ha per 1000 residents*	49.1 ha of open space secured
Renewable energy capacity increased	124.8 MW	194.1 MW	Increase of 32.1 MW
Council's greenhouse gas emissions reduced	0.59 tCO ₂ e per resident†	0.63 tCO ₂ e per resident*	Increase of 0.04 tCO ₂ e per resident

ha – Hectares
MW – Megawatts

tCO₂e – Tonnes of carbon dioxide equivalent

*Based on a population forecast figure of 328,000 (30 June 2019).

†To comply with the National Greenhouse Gas Protocol additional emission sources have been measured since 2017-2018 and incorporated into this figure as the new baseline (2017-2018).

The year ahead

In 2019-2020, we'll maintain our momentum and continue the delivery of our 26 Transformational Actions and key council services. For a full suite of actions and tasks visit our website.

Connecting nature and people

Connecting our valued habitat areas to support our native flora and fauna, and providing the community with opportunities to participate in conservation and to experience the natural environment.



Protecting the Regional Inter-urban Break

Protecting the Regional Inter-urban Break in perpetuity to secure the environmental, production and recreation values.



Being prepared

Proactively planning for the potential impacts of climate change and natural hazards to build the resilience of the region.



How we live in the environment

Increasing our understanding of how people interact with the natural environment.



Healthy coast

Providing a strategic and coordinated approach to the protection, sustainable use and enjoyment of our dunes, beaches, rocky shores and near-shore marine waters.



Expanding the green space

Securing and activating space for future generations through an accelerated strategic land program to improve conservation, flood mitigation and sport and recreation opportunities.



Acknowledgements

Council would like to acknowledge the contributors of a number of images in this document, including:

S. Williams – Moffat Beach (front cover), D. Bazley – Glass House Mountains (page 2), L.Allanson – Glass House Mountains (page 2,3,4), D.Dicker - Mary River (page 6), A. Bell – Mary Cairncross (page 6).



Environment and Liveability

www.sunshinecoast.qld.gov.au

els@sunshinecoast.qld.gov.au

T 07 5475 7272 F 07 5475 7277

Locked Bag 72 Sunshine Coast Mail Centre Qld 4560

