

Sunshine Coast COUNCIL
 Our region.
Healthy. Smart. Creative.

Celebrate people and nature

Biosphere nomination for the Sunshine Coast

Our credentials are worthy of international recognition

- We're one of the **Top 7 Intelligent Communities** of 2019, sharing the global spotlight with communities from Canada, Taiwan and the United States.
- We won the 2018 **Smart Cities Leadership City Award** in recognition of our **liveability, workability and sustainability** outcomes from technology and data solutions.
- We are the **first local government** in Australia to offset our entire electricity use from **renewable energy** (generated by the Sunshine Coast Solar Farm).
- Our residents are sustainably-focussed, as **40%** of our dwellings have **solar power** (compared to the 21% average across Australia).
- We have **81,900 hectares** of open space and more than **460 recreation parks**.
- Our council area is **54% native vegetation** and **63%** of our coast is in a **natural or near-natural** state.

What is a biosphere?
 A biosphere is an international site of excellence, recognised by UNESCO as an area of natural beauty where people live and work. Biospheres are places, just like our region, where active conservation sits alongside responsible development and people living sustainably.

Australia has nine biospheres, and across the world there are more than 880 UNESCO Biospheres in over 120 countries.

What does this mean for me?
 A biosphere is non-statutory. This means that as long as people are following local, state or federal laws then nothing needs to change. People can continue to operate their business or enjoy the outdoors as they currently are, although continuing to adopt sustainable practices will be encouraged.

There are many benefits associated with being a biosphere that Sunshine Coast residents can take advantage of. A biosphere credential, coupled with harnessing these benefits, will ensure our region adapts to change, while maintaining our special natural areas and our unique lifestyle.

Why do we want to be a biosphere?
 Benefits include:

- **Lifestyle** – ensures we continue to have a healthy environment and a liveable Sunshine Coast.
- **Environment** – further enhances and maintains our landscape and character, biodiversity, waterways, wetlands and coastal areas.
- **Economy and business** – attracting more investment to our region and helping local businesses grow through the creation of niche markets for our region's products, services, facilities and practices.
- **Agriculture, forestry and fisheries** – provides a premium brand to increase the value of products and services through a sustainable 'Produced in the Sunshine Coast' brand. It also protects these industries as an important part of our economy.
- **Development and construction** – assists to achieve planning principles of urban consolidation and sustainable design to deliver inclusive and vibrant communities.
- **Partnerships** – increases collaboration between schools, academia, business and government, with a focus on sustainability projects.
- **Tourism** – raising the profile of the Sunshine Coast and increasing the desirability of our region as a holiday destination (domestically, abroad and to new market segments).

Through considered planning and delivery of major projects and initiatives, the Sunshine Coast is Australia's most sustainable region - healthy, smart, creative.

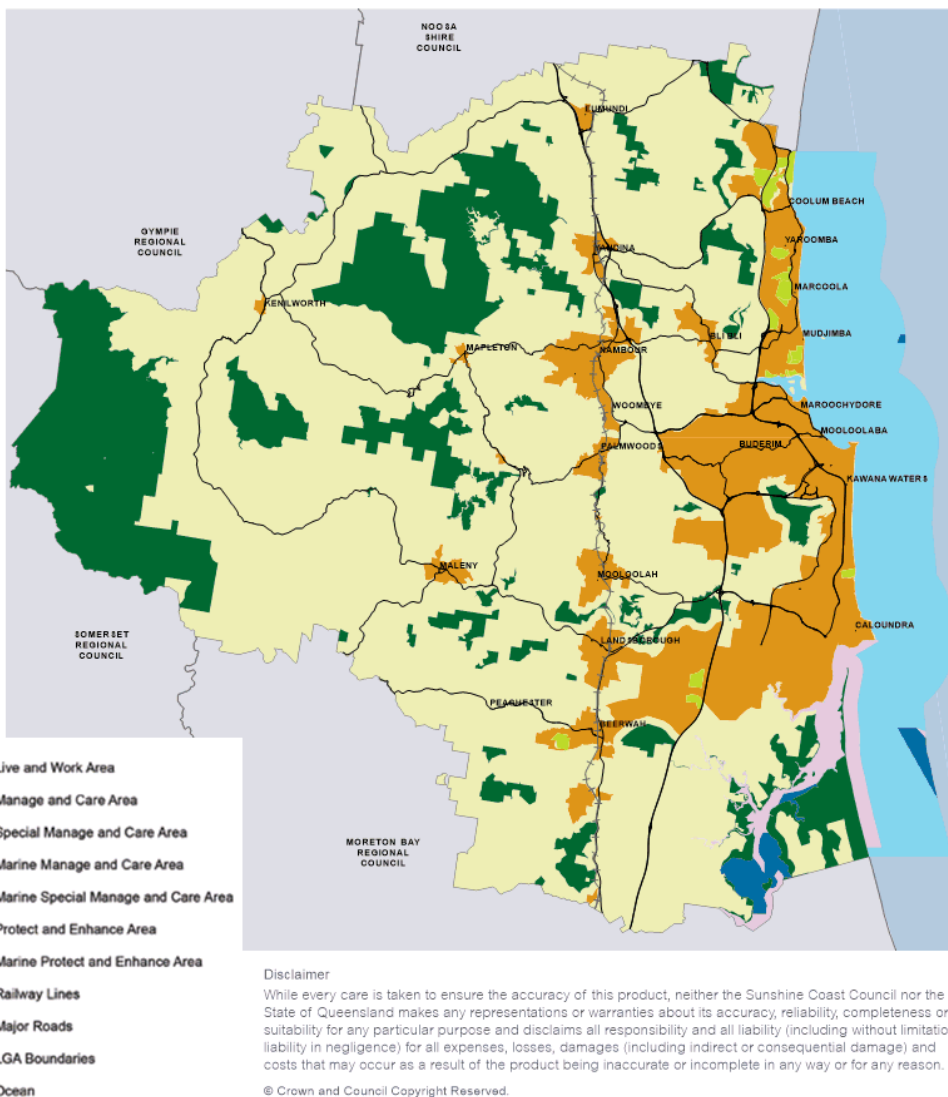


DRAFT Sunshine Coast Biosphere Map

Our biosphere will have areas that are clear, simple and easy to understand. The areas apply to the land in the local government area

and the sea out to three nautical miles. Areas align with council's existing Planning Scheme, state and federal planning policy and

legislation. This ensures consistency and allows businesses, land and sea users to carry on, without change.





What might a Sunshine Coast Biosphere look like?

Live and Work Area

- Multiple land-uses where people live and make a living.
- Sustainable development and resource management practices are promoted and developed.
- Green spaces, parks, waterways and beaches are key natural assets.

Manage and Care Area

- Rural lifestyle and living areas where primary producers use the land for business.
- Care is taken to manage land and sea activities, minimise impacts on Protect and Enhance Areas and to connect Protect and Enhance Areas with Live and Work Areas.
- Manage and Care Areas must surround Protect and Enhance Areas but can stand alone.
- The width of the Manage and Care area must be at least 500 metres whenever possible to buffer the Protect and Enhance Areas. The 500 metre buffer width sits inside the Protect and Enhance Area (where there is a Live and Work Area immediately adjacent).

Special Manage and Care Area

- These areas are highly valued, small protected areas that are surrounded by Live and Work Areas.
- These small areas still remain legally protected. However, we recognise these areas need special care to minimise impacts.

Protect and Enhance Area

- A legally protected area that is publically owned and devoted to long-term conservation.
- It is over 20 hectares to meet conservation objectives.
- Examples: larger national parks, part of some marine parks and council's environment reserves.

Activities in the proposed biosphere areas

Activity	Live and Work Area	△ Manage and Care Area	△ Special Manage and Care Area	△ Protect and Enhance Area
Conservation and protection	✓	✓	✓	✓
Research, monitoring and education	✓	✓	✓	✓
Camping, hiking, horse riding, bike riding and other recreational activities*	✓	✓	✓	✓
Recreational fishing*	✓	✓	✓	✗
Boating*	✓	✓	✓	✓
Tourism	✓	✓	✓	✓
Infrastructure as determined by government infrastructure planning (e.g. cables, power lines, roads, railway)	✓	✓	✓	✓
Forestry	✓	✓	✗	✗
Rural living and rural activities such as agriculture, horticulture and grazing	✓	✓	✗	✗
Commercial fishing	✓	✓	✗	✗
Sports	✓	✓	✗	✗
Dredging	✓	✓	✗	✗
Water reservoirs	✓	✓	✗	✗
Urban residential	✓	✗	✗	✗
Industrial, commercial, manufacturing, retail and healthcare	✓	✗	✗	✗
Property development and construction	✓	✗	✗	✗
Waste (e.g. landfills)	✓	✗	✗	✗

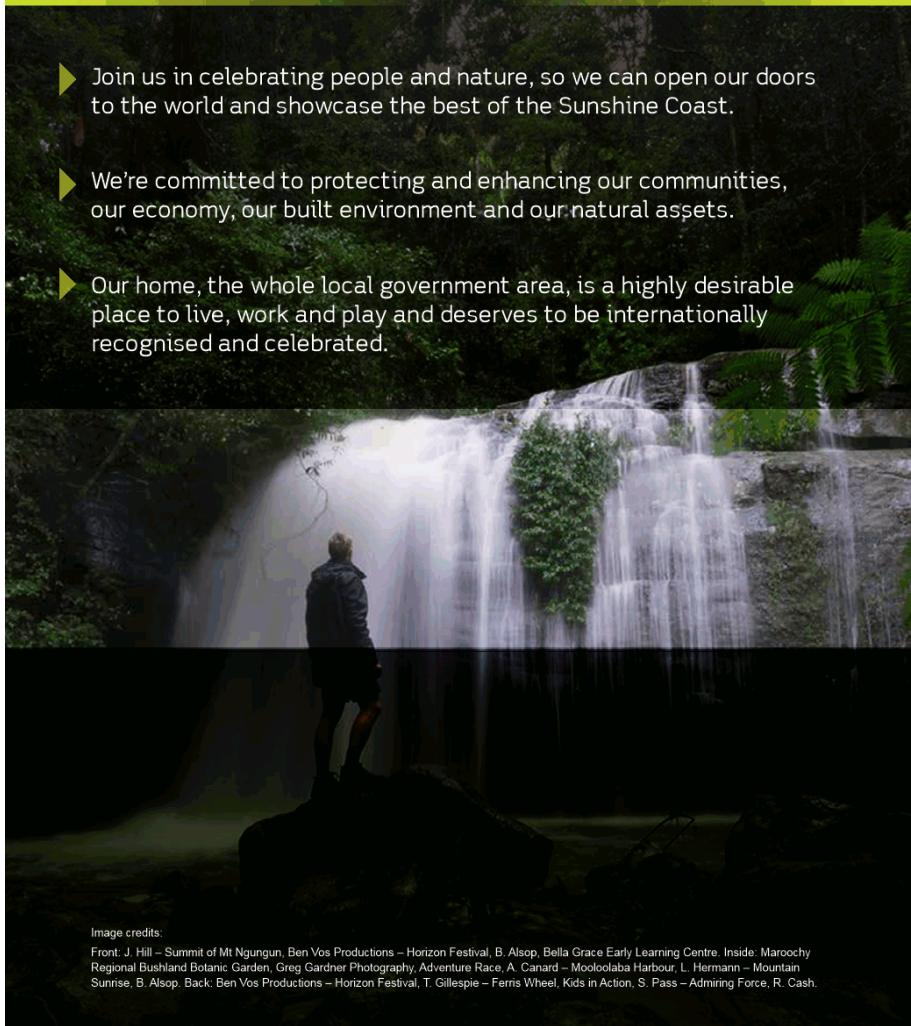
*As outlined by existing legislation and policy

△ Relates to land and marine areas





- ▶ Join us in celebrating people and nature, so we can open our doors to the world and showcase the best of the Sunshine Coast.
- ▶ We're committed to protecting and enhancing our communities, our economy, our built environment and our natural assets.
- ▶ Our home, the whole local government area, is a highly desirable place to live, work and play and deserves to be internationally recognised and celebrated.



When will our Biosphere happen?

The application process for obtaining a UNESCO Biosphere credential takes many years. Towards the end of this year, council will submit the nomination (on behalf of the community) to the Queensland Government and then the Australian Government. It's the Australian Government who will submit the nomination to UNESCO. Two years later, in June 2021, we'll learn of the outcome of our nomination from UNESCO. Council will keep you updated on progress.



How can I have my say?

We want to know your thoughts about a biosphere for our region. You can have your say on our website, haveyoursay.sunshinecoast.qld.gov.au



www.sunshinecoast.qld.gov.au
mail@sunshinecoast.qld.gov.au
 T 07 5475 7272 F 07 5475 7277
 Locked Bag 72 Sunshine Coast Mail Centre Qld 4560

Facebook: @sunshinecoastcouncil Twitter: @councilscc Instagram: @sunshinecoastcouncil

Image credits:
 Front: J. Hill – Summit of Mt Ngungun, Ben Vos Productions – Horizon Festival, B. Alsop, Bella Grace Early Learning Centre. Inside: Maroochy Regional Bushland Botanic Garden, Greg Gardner Photography, Adventure Race, A. Canard – Mooloolaba Harbour, L. Hermann – Mountain Sunrise, B. Alsop. Back: Ben Vos Productions – Horizon Festival, T. Gillespie – Ferris Wheel, Kids in Action, S. Pass – Admiring Force, R. Cash.

©2019 Sunshine Coast Council. All rights reserved.