

# Mooloolaba Foreshore Revitalisation



29 April 2025

## Construction Notification Stage 2 – Early Works

Sunshine Coast Council is investing in the future of Mooloolaba with a major foreshore revitalisation project to create more beachfront parkland, new community facilities, improve access to the beach and foreshore and enhance coastal protection for the benefit of residents, visitors and businesses. Visit the [webpage](#) to learn more.

### Construction overview

**Early works – continuing through May to June 2025**

**Major works – June/July 2025 to December 2026 (staged construction)**

Early works are continuing ahead of the major works period starting in June/July 2025. Early works include:

- a new temporary link road from Beach Terrace to the Esplanade (complete)
- a temporary beach access ramp
- additional temporary showers and a PWD toilet/shower
- some temporary changes to pedestrian access including alternate footpaths
- temporary additional wayfinding signage.

This notification focuses on the early works period. Major construction will be staged with more detailed information provided in future notifications.

Access to Mooloolaba Beach, including a surf lifesaver patrol flagged area, businesses, accommodation providers and private residences will remain available during all works. Council and construction workers will liaise directly with local businesses as required.

Locals and visitors can continue to enjoy all Mooloolaba has to offer during the foreshore revitalisation project.

Council has been working with the Mooloolaba Business Activation Group on a Business Activation Plan to help support businesses during works. A range of exciting events and initiatives are planned along with dedicated business resources provided. For more information, visit the [Business Support](#) web page.

### Temporary beach access ramp

**South of existing Mooloolaba lifeguard tower  
Construction Tuesday 6 to Friday 16 May 2025. Monday to Friday, 7am to 6pm.**

To ensure the safety of our community including ongoing surf lifesaving activities, emergency vehicle access and community access to the beach during the replacement seawall construction, a temporary beach access ramp will be provided to the south of the existing ramp and lifeguard tower.

The ramp will be made of thick plastic matting covered with sand. It will remain in place until the existing ramp can be reopened. Some vegetation must be pruned or removed to accommodate the temporary ramp. Revegetation will take place once the ramp is removed.

Construction is expected to have minimal impacts on our community. Community access will remain available to The Surf Club Mooloolaba, Hustle and Flow Café (under the surf club), Arthur Parkyn Park, Mooloolaba Beach Holiday Park, Mooloolaba Esplanade and Parkyn Parade.



Australian Government



# Mooloolaba Foreshore Revitalisation

29 April 2025

Low-level noise is expected for the majority of works with noise impacts concentrated during the first week of construction. Machinery will be in operation including a small posi-track bobcat. For community safety the area will be fenced construction.

The temporary ramp is expected to open for community use by late-May/early June 2025. These works have been timed to take place after the Easter holiday and Anzac Day periods.

## Beach wheelchair and matting service

The beach wheelchair and matting service will continue to operate in the temporary ramp location under the direction of life guards and Mooloolaba SLSC.

## Temporary amenities

### Athur Parkyn Park

#### Construction late May to June 2025

#### Monday to Friday, 7am to 6pm

For our community's convenience additional temporary showers will be erected in Arthur Parkyn Park while the new Stage Two amenities are constructed. The temporary amenities will remain in place until Stage Two construction is complete.

Disability access remains available with a PWD toilet and shower in the temporary amenities.

Construction of the temporary amenities is expected to have minimal impacts on our community.

A partially prefabricated building will be delivered by a crane truck and carefully placed, secured and plumbed into position. Grass will be reinstated after the temporary amenities are removed.

Existing permanent amenities are located at Mooloolaba's Northern Parkland, Arthur Parkyn Park and Charles Clarke Park.

## Temporary changes to parking, traffic conditions and way finding signage

### May to June 2025

For safety reasons during construction of the temporary beach access ramp and amenities, some changes to parking, traffic and signage are required.

Some car parks in Arthur Parkyn Park will be temporarily unavailable. Alternative, dedicated parking for professional lifeguards will be provided nearby.

Vehicle and pedestrian traffic control will be in place as required.

Please see the map on page three of this notification for further details of the temporary beach access ramp and amenities location.

## Free parking — first four hours free at PARKnGO Mooloolaba Central

During Stage Two early and major works, Council is providing the first four hours of parking free at the [PARKnGO Mooloolaba Central](#) car park.

More than 700 car parks, 54 motorcycle spaces, 50 bicycle spaces and accessible parking spaces are available, all less than 300 metres to Mooloolaba Beach and the foreshore.

This initiative is part of the Mooloolaba Business Activation Plan.



# Mooloolaba Foreshore Revitalisation

29 April 2025

## Keep up to date on the project

To help keep our community informed, regular emailed construction updates will be issued to all subscribers and published on the project's web page.

You can also stay up to date with the overall project by visiting Council's website: [sunshinecoast.qld.gov.au/mfr](https://sunshinecoast.qld.gov.au/mfr)

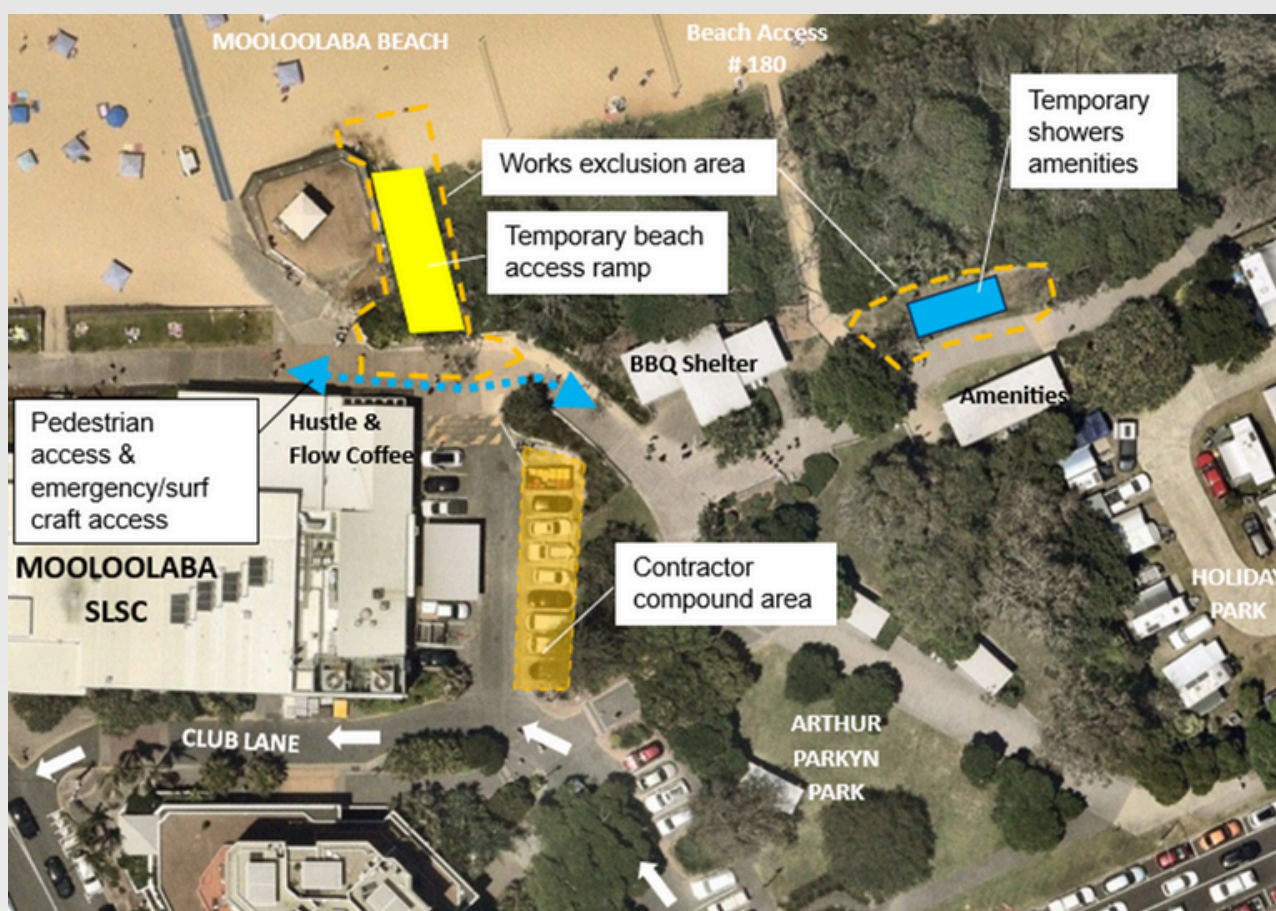
The web page includes extensive information about the foreshore's ongoing revitalisation, the Stage Two plan and features Frequently Asked Questions and all project updates.

## Contact the project team

For further information please email the project team: [mfr@sunshinecoast.qld.gov.au](mailto:mfr@sunshinecoast.qld.gov.au)

*All information contained in this communication is accurate at the time of distribution. However, works and dates are subject to change due to circumstances outside of Sunshine Coast Council's control including weather and site conditions.*

**Figure 1** Stage Two early works - temporary beach access ramp and amenities.



The Mooloolaba Seawall project received funding from the Australian Government.