

## Project News

Project number: B1730

June 2020

# Planned seawall to prevent future erosion at Sir Leslie Wilson Park, Dicky Beach

## Project summary

The Sunshine Coast has approximately 60 kilometres of coastline, stretching from Caloundra to Peregian Beach. Our beaches are vulnerable to repeated erosion during storms, swells and weather events.

Council has a Shoreline Erosion Management Plan (SEMP) in place to guide its management of the areas vulnerable to severe erosion. It outlines preferred management options that are underpinned by sound science, coastal engineering principles and our community values.

One of the locations under threat is Sir Leslie Wilson Park, at Cooroora Street, Dicky Beach (see figure 1).

Council has been guided by the SEMP to protect this site from severe erosion by taking the following management activities:

1. Revegetating the dunes (in partnership with the local Wildlife Preservation Society of Queensland group) with new fences installed.
2. Carrying out annual beach scraping and sand renourishment of the area to replenish the sand on the dunes.

For the time being, the sand renourishment strategy is working, however if it no longer remains a viable option or proves unsuccessful, the next option is to build a rock seawall.

To do this, council needs to put a plan in place now – so it can act quickly if the seawall is required.

This plan involves applying for a development permit to build a rock seawall (see designs figure 2 and 3).

To prepare for this, council has submitted a development application which seeks approval for a rock wall to be built in the

future only if the current management option of beach scraping and sand renourishment no longer works.

## Timeline

Although Council is putting a plan in place now, there is no timeline proposed for the construction of the rock wall.

Instead the area and the site conditions will be monitored and council will respond if the current strategy no longer works.

## What a rock seawall protects

A seawall will protect the open space at Sir Leslie Wilson Park and the future coastal pathway and the historic Norfolk Island pine trees.

Our coastline is an important part of who we are and council is planning ahead to make sure we can all enjoy our beaches, coastal parks and pathways now and in the future.

## Existing nearby rock seawall

A rock seawall already exists to protect the private property nearby. This seawall was constructed by the property owners to protect their private property as emergency works following a series of erosion events. Council approval was given for this wall.

## Seawall design

The seawall has been designed with a similar look and feel to the seawalls already in place at Queen of Colonies Parade, Moffat Beach and Lower Neill Street, Dicky Beach. It would be constructed with natural rock materials from local quarries with very good longevity, being designed to withstand a 1 in 50 year storm event.

The structure will be built by placing natural rocks in an alignment which ensures current aesthetics and useability of the area are not seriously changed or impacted. See figures 2 and 3 for the seawall design.

Please contact council officer, Joel Bradshaw on the details below should you require more information or to provide comments.

## The development approval process

Permits are required for coastal seawalls constructed within the local government tidal area.

Council is the assessment manager and must assess the application against State Code 8: Coastal development and tidal works of the SDAP modules. The application is referred to relevant Queensland Government departments for review.

### Sunshine Coast Council

[www.sunshinecoast.qld.gov.au](http://www.sunshinecoast.qld.gov.au)

[mail@sunshinecoast.qld.gov.au](mailto:mail@sunshinecoast.qld.gov.au)

T 07 5475 7272 F 07 5475 7277

Locked Bag 72 Sunshine Coast Mail Centre Qld 4560

## No disruption to nesting turtles

Any future work will occur outside of the turtle nesting season, and the beach will be reprofiled with available sand after the work has finished.

## Budget

A budget of \$30,000 has been allocated from Council's 10-year capital works program to complete the design and permits this financial year.

## Further information

Council is committed to keeping you informed about future plans for your neighbourhood.

Sand renourishment remains the preferred management option for the foreseeable future. However, further permanent work will be required to ensure the security of the coastline in this area and to accommodate future planned coastal pathway work in the area.

Council will keep you informed as the project progresses.



### A note from your local councillor

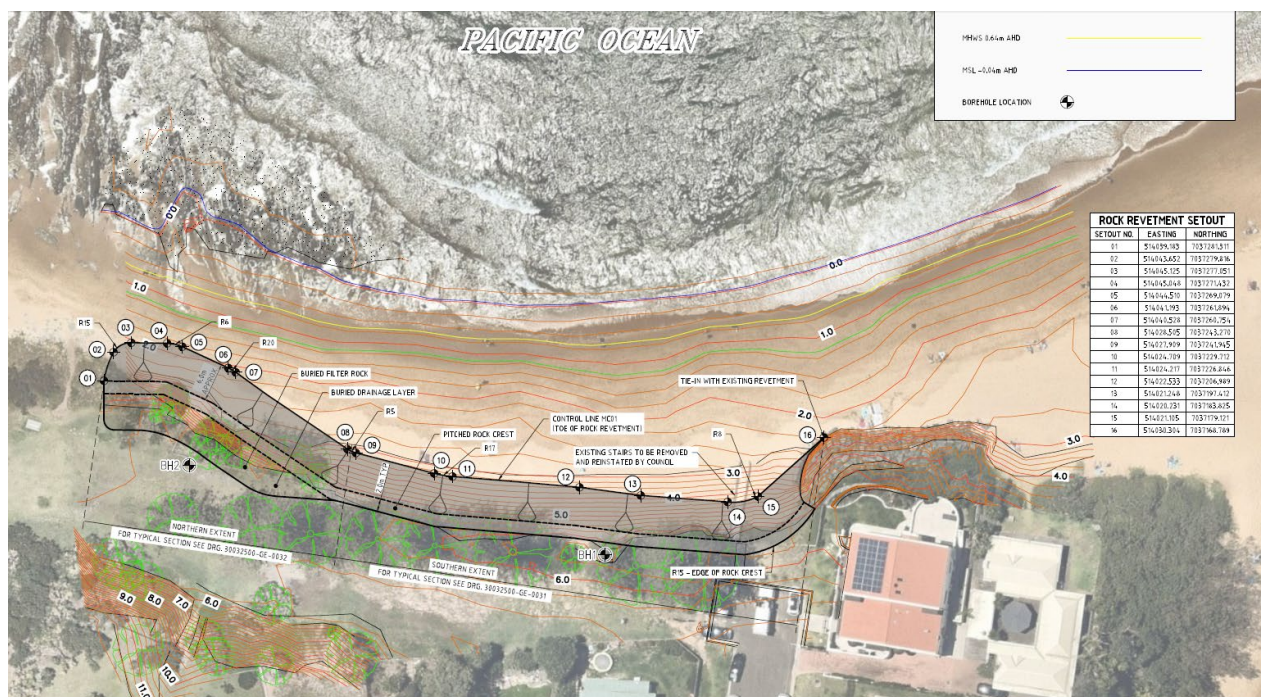
I am pleased that the process for undertaking the design and approval processes for the construction of this seawall is underway. It is vital that council looks at ways of protecting our beach environment in the long term and in particular the coastal pathway and Norfolk Pines at this location.

Cr Terry Landsberg

**Figure 1: Previous erosion, existing seawall and Norfolk Pines – Cooroora St dunal system**



**Figure 2: Plan view – Cooroora st seawall**



**Figure 3: Nominal cross section – Cooroora st seawall**

