

Sunshine Coast Council Integrated Transport Strategy



Introduction to the Sunshine Coast Integrated Transport Strategy

With around 200,000 more people expected to live on the Sunshine Coast by 2041, it is important we plan ahead to ensure our current and future residents can enjoy a connected, smart, integrated, safe and efficient transport system.

The *Integrated Transport Strategy* (ITS) is aligned to council's vision for the Sunshine Coast to be Australia's most sustainable region – healthy, smart, creative.

It responds to the challenges and opportunities facing our region and outlines our vision to address the Sunshine Coast's transport needs.

It identifies the roles and responsibilities of other levels of government, private industry and the community.

In short, the strategy intends to:

- support economic development
- respond to new growth areas and trends
- balance the consideration of all modes of transport
- respond to emerging technologies and business models such as ride sharing, car sharing, autonomous vehicles and big data
- advocate and apply a 'one network' approach
- align with relevant strategic policy and planning documents
- update data, analysis and projections and identify system performance indicators for tracking and decision-making
- be an effective information and advocacy tool for council and the community
- reduce adverse environmental impacts through a lower carbon transport system



How was the strategy developed?

The *Integrated Transport Strategy* was developed with input from the community, key stakeholder feedback and expert analysis, as well as a review of trends occurring across the transport sector.

The strategy considers how we currently travel in the region and outlines the known transport network deficiencies that need to be addressed.

The strategy outlines the challenges we need to respond to, such as a growing and ageing population, high car dependency, congestion, and the provision and availability of public transport.

It identifies the opportunities we need to position for, including building our new economy, integrating transport and land use, creating better travel choice and embracing smart mobility.

Community Engagement

Community consultation and feedback has been an integral part of the development of the *Integrated Transport Strategy*.

Market research was undertaken from November 2017 to January 2018, to help council better understand the community's views and barriers relating to travel in the region.

Key market research outcomes

33%

Not satisfied at all with current transport system

72%

Believe population growth will 'very negatively affect' Coast's lifestyle

77%

Support light rail to help manage growth impacts and maintain lifestyle

74%

Support council's travel behaviour change focus

Community consultation was also undertaken between the 25 June and 20 July 2018.

Council received 157 submitted feedback forms, and 18 formal submissions. The feedback was supportive of the strategy's proposed direction, priorities and actions.

Key community engagement outcomes

76%

believe the ITS will provide the platform to achieve the ITS vision

88%

support the ITS vision to deliver a connected and integrated transport system for the region over the next 20 plus years

81%

agree on the need to reduce our reliance on cars and support an increase in public transport mode share

92%

have an improved level of understanding of the roles and responsibilities for transport

93%

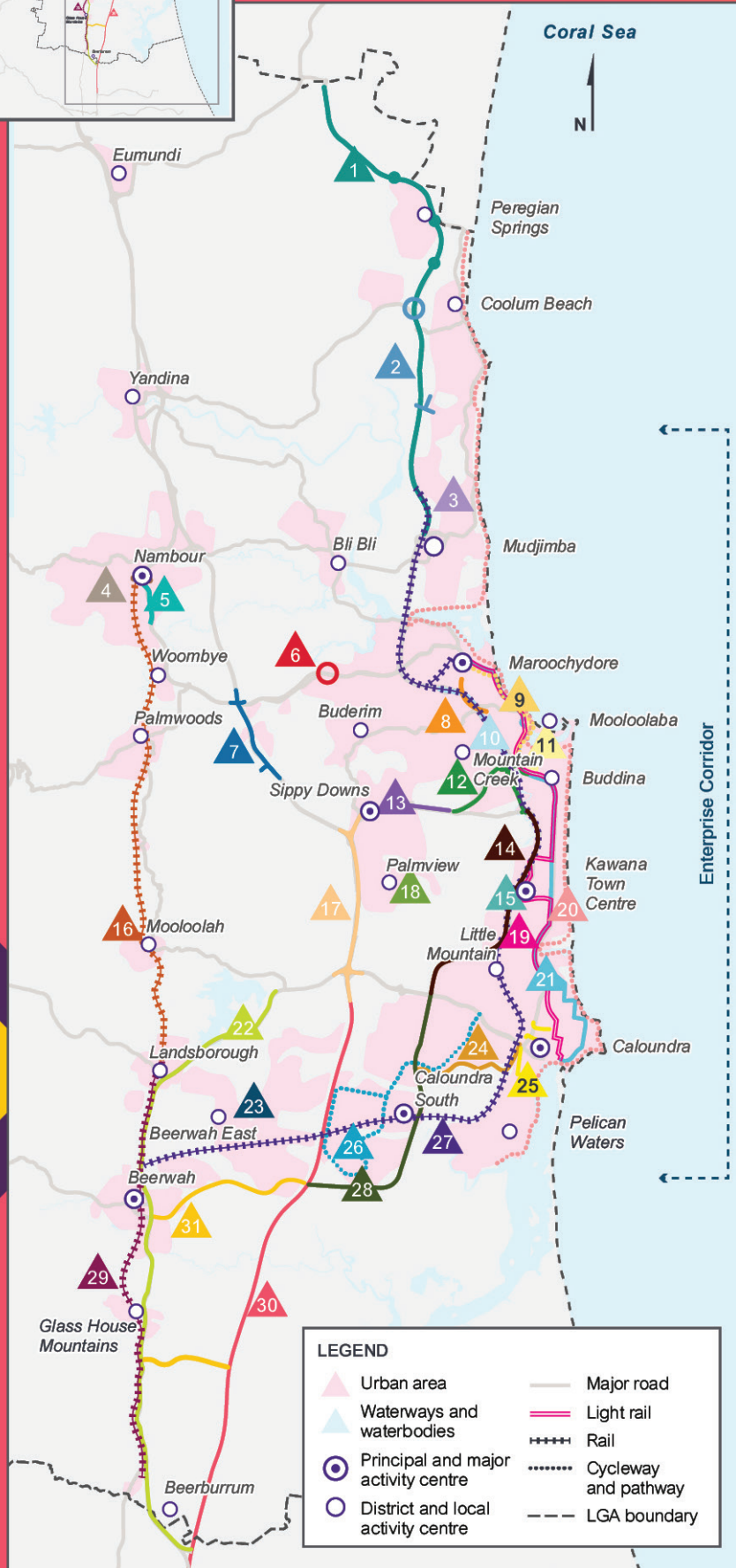
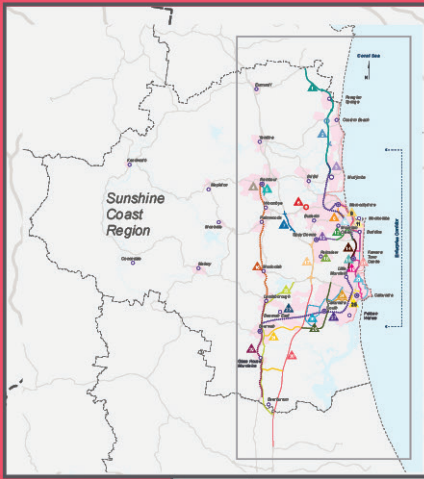
agree travel behaviour change is critical and the community has a significant role to play

97%

support for Council to continue advocating for investment in transport



Council has identified priority transport projects that will be essential to providing a smart, integrated, safe and efficient transport system to support the growth of the Sunshine Coast. These projects primarily require support and funding from other levels of government, as well as council.



Map Ref#	Priority Project
1	Sunshine Motorway – north of Maroochy River
2	Coolum Beach Access Improvements
3	Sunshine Coast Airport Expansion
4	Nambour Access Improvements
5	Nambour Connection Road Pathway
6	Kunda Park Connection Improvements
7	Bruce Highway Upgrade – Maroochyore Road to Mons Road
8	Maroochyore Access Improvements
9	Minyama to Maroochyore Cycleway
10	Sunshine Motorway Upgrade (MMTC), MRI to Maroochy Blvd
11	Brisbane Road Upgrade Project
12	Mooloolah River Interchange (MRI)
13	Sunshine Motorway Upgrade Sippy Downs
14	Kawana Arterial Project, Caloundra Road to MRI
15	Sunshine Coast University Hospital Access Improvements
16	Landsborough to Nambour Rail Duplication Upgrade
17	Bruce Highway Upgrade – Caloundra Road to Sunshine Motorway
18	Palmview Development transport infrastructure
19	Sunshine Coast Light Rail
20	Coastal Pathway
21	CoastConnect Project
22	Steve Irwin Way Upgrade
23	Beerwah East Development transport infrastructure
24	East-West Link Road (Bells Creek Arterial to Nicklin Way), Caloundra
25	Caloundra Access Improvements
26	Caloundra South Cycleway and Pathway
27	CAMCOS Passenger Rail Project
28	Bells Creek Arterial
29	Beerburum to Landsborough Rail Duplication Upgrade
30	Bruce Highway Upgrade – Pine Rivers to Caloundra Road
31	Bruce Highway/Steve Irwin Way East-West Connectors
	Travel Behaviour Change Initiatives – region wide
	Smart Mobility Trials – region wide

Figure 3: Priority transport projects

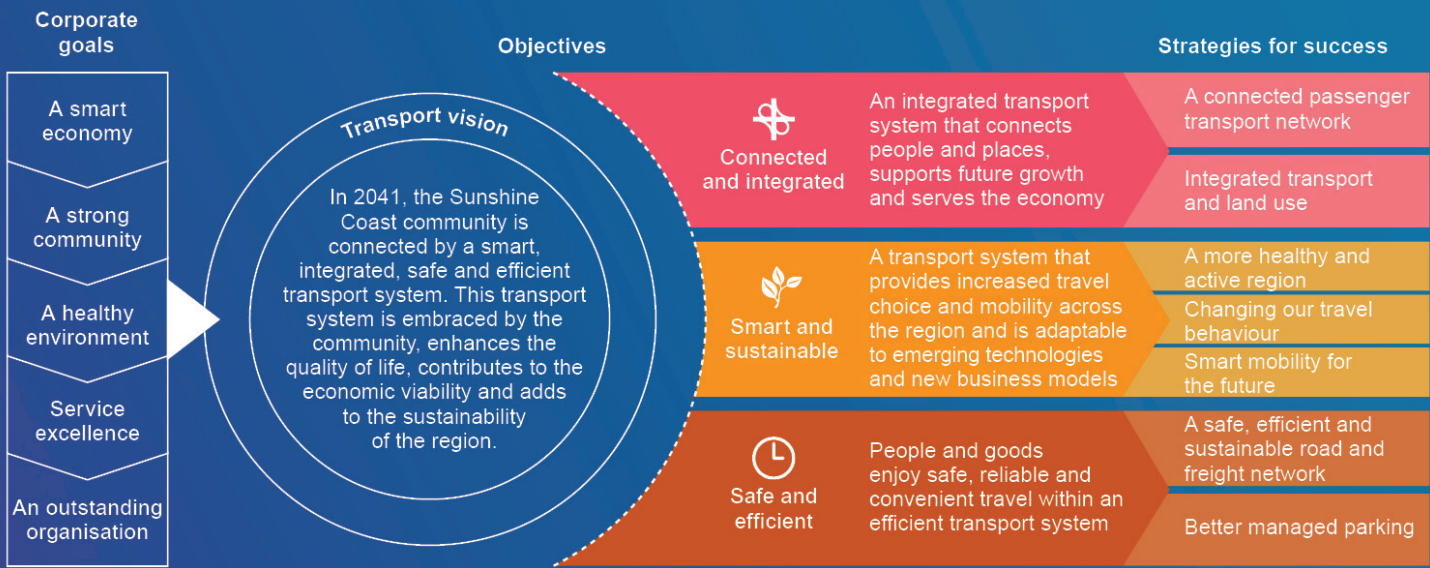


Figure 1: Goals, vision, objectives and strategies of the Integrated Transport Strategy

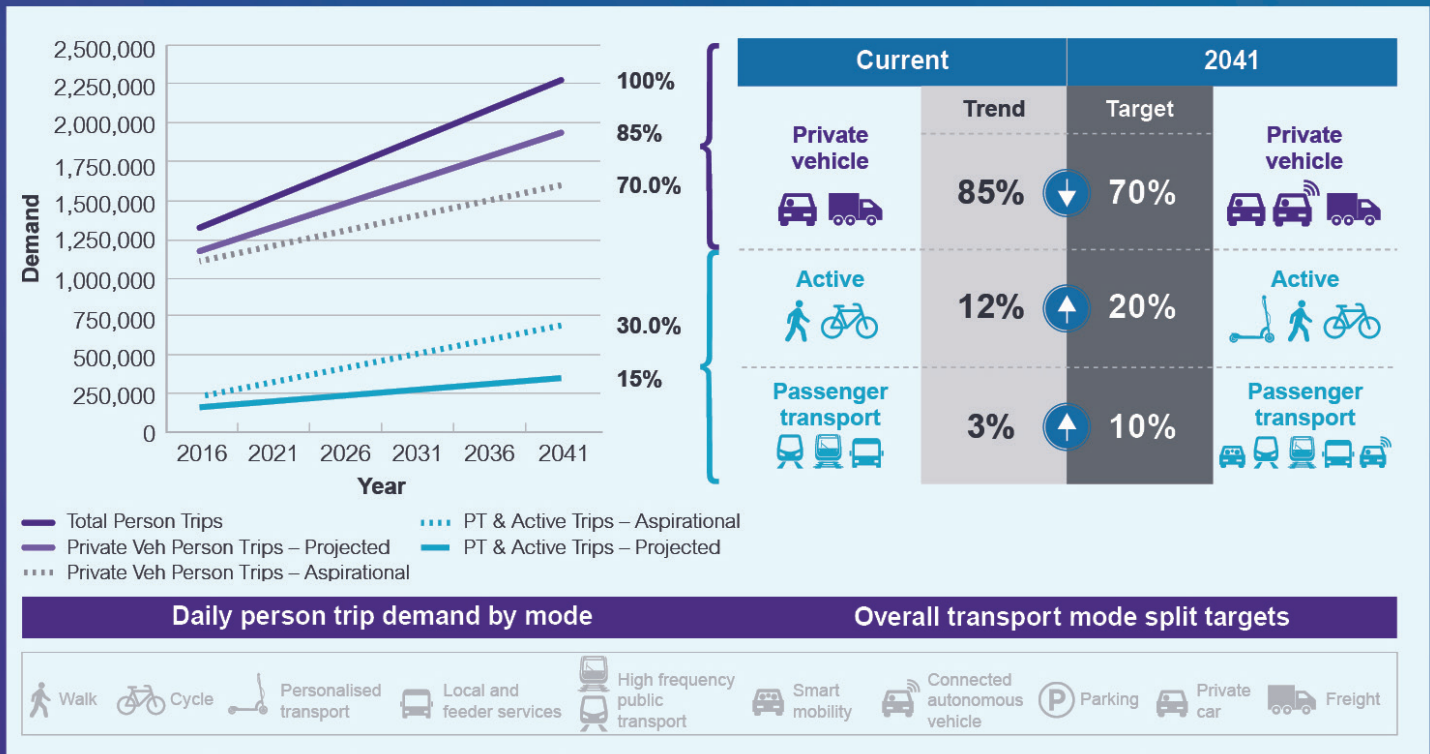


Figure 2: Transport mode share targets

How do we achieve a sustainable transport network?

As identified in the *South East Queensland Regional Plan*, the Sunshine Coast will need to accommodate around 200,000 residents through to 2041. The increased population impacts will be significant and that is why council has undertaken extensive planning to accommodate our new residents.

Increasing the options for travel and reducing our overwhelming reliance on private cars are the key to achieving a sustainable transport network in the future.

Our strategy outlines specific targets to guide planning and investment of infrastructure and programs that will encourage and assist the community to use more sustainable forms of travel. However, the community will ultimately decide whether these targets are achievable through individual travel choices.

Our transport mode share targets to 2041 are shown in Figure 2 (left).

To work towards achieving these mode share targets, the future of transport on the Sunshine Coast will need to include:

- high frequency public transport connections, between key centres
- local and feeder bus services
- new smart mobility travel choice options, such as ride share and car share
- a safe, connected and convenient active transport network
- better management of the road network and parking supply
- travel behaviour change initiatives
- timely investment in the transport network
- a partnered approach by all stakeholders

Funding and Investment

All levels of government and the private sector have a role to play in the planning, delivery and management of an integrated transport system.

Timely investment from all levels of government will be critical to achieving the targets outlined in the strategy.



Investment in transport infrastructure is also necessary to provide opportunities for non-infrastructure solutions, particularly additional public transport services.

New emerging technologies such as autonomous vehicles and smart mobility as well as travel behaviour change programs have the potential to revolutionise the mix of transport options and how travel occurs.

Council is willing to partner or be a catalyst for improvement and innovation to the benefit of our community. By approaching the transport system as one network, we can achieve greater outcomes.

The *Integrated Transport Strategy* will be implemented in partnership with other levels of government and the private sector.

Council will continue to maintain a strong advocacy approach with the state and federal governments and look at opportunities for private investment with a view to securing an integrated transport solution for our region.

Implementation

The Integrated Transport Strategy outlines council's transport policy position and importantly lists a range of actions to assist in progressing to the intended objectives. Those actions, identified as council responsibility, will be funded through the *Capital Works Program*, the *Local Government Infrastructure Plan (LGIP)* and operational budget requests.

Some actions have begun and discussions with our partners regarding other actions are underway.

To find out more visit council's website.



www.sunshinecoast.qld.gov.au

mail@sunshinecoast.qld.gov.au

T 07 5475 7272 **F** 07 5475 7277

Locked Bag 72

Sunshine Coast Mail Centre

Old 4560