

Project number: H3747

## Brisbane Road Upgrade

Stages 2 and 3

Mooloolaba Transport Corridor Upgrade

**URGENT** road sealing works - in preparation for future asphalt (bitumen) works

Friday 9 December 6am to 6pm



Brisbane Road, Mooloolaba (between River Esplanade and Hancock Street)



No vehicle access to/from some properties during works

Alternative parking required in some cases

### Construction overview

Limited availability of construction materials and contractors has meant that Council and the construction contractor must take advantage of an urgent opportunity to seal the two eastern lanes of Brisbane Road currently under construction.

With the next available road sealing date being next year, this will ensure that road construction works can continue.

The road seal will be applied on Friday 9 December between the hours of 6am and 6pm. The project team will liaise directly with adjacent residents and businesses prior to and during construction.

Please see the following important information and map on page two of this notification for further details.

### Future asphalt (bitumen) works

Brisbane Road must be sealed in preparation for future asphalt (bitumen) application. Further advice about asphalt works will be provided as soon as possible. Asphalt works may take place as early as next week.

### Temporary changes to traffic conditions (including NO vehicle access to some premises during sealing works)

While most residents and businesses in this section of Brisbane Road have alternative access from Hancock Street, Burnett Street, Foote Street or River Esplanade, for some, there will be NO vehicle access available to homes/businesses during these works.

Pedestrian access will remain available.

Emergency services access will remain available under traffic control.

### Parking and access to private vehicles

Residents/visitors/clients/staff are asked not to park vehicles in this section of Brisbane Road between the hours of 6am and 6pm so that the road seal can be applied.

Vehicles remaining and obstructing the works will be towed.

Should 24/7 access to vehicles be required (for example, businesses, shift workers, transportation arrangements for family or friends, travel etc), the project team recommends parking your vehicle **outside of the construction area** to enable guaranteed access.

All information contained in this communication is accurate at the time of distribution however works and dates are subject to change due to circumstances outside of Sunshine Coast Council's control.

In cases where driveways and carparks are temporarily inaccessible, free and metered parking is available on [nearby streets](#) and at the [ParknGo Mooloolaba Central](#) car park. ParknGo rates are \$2.50 for the first hour and a flat rate of \$5 per day.

Traffic control will assist motorists and pedestrians during construction as required.

### What to expect during these works?

The construction team will make every effort to minimise impacts to the community however nearby residents and businesses can expect intermittent construction noise including the operation of heavy machinery and large vehicles including vacuum trucks.

For residents who may be sensitive to smells, please consider closing blinds and windows and using fans or air conditioning where possible.

As previously advised, some properties will be temporarily inaccessible by vehicles.

Please allow an extra 10 minutes of travel time when travelling near the area during these works.

### Register for project updates and/or contact the project team

To register for construction updates, email your details to [mtcu@sunshinecoast.qld.gov.au](mailto:mtcu@sunshinecoast.qld.gov.au)

For further information, you can contact the project team on 1800 531 597 (during office hours, Monday to Friday 8.30am – 5pm) or email [mtcu@sunshinecoast.qld.gov.au](mailto:mtcu@sunshinecoast.qld.gov.au)

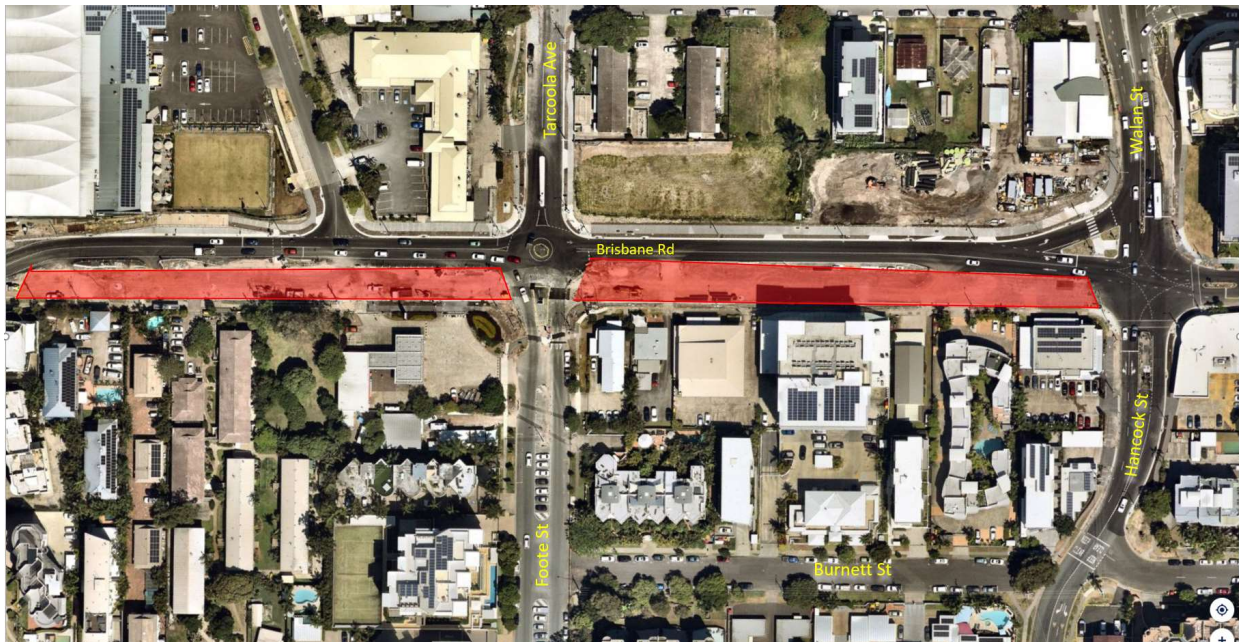


Figure 1. RED area shows construction zone.

### Road sealing works - Friday 9 December 2022 (inclusive) 6am to 6pm Brisbane Road, Mooloolaba

- Full construction area closure (to all vehicles except for emergency services vehicles)
- No vehicle access to/from premises during works. Please park outside the construction area if vehicle use is required.
- Pedestrian access remains available

*\*These works are subject to change dependent upon weather, site conditions and equipment and materials availability.*