

## Maroochy Groyne Field Renewal Stage 2

### Project summary

Following the successful Stage 1 Maroochy Groyne renewal and seawall works in August 2020, Stage 2 works will take place from early-May to late-September 2022.

Stage 1 included replacing the two northern-most groyne structures (Groynes #3 and #4) and part of the existing seawall surrounding the Cotton Tree Holiday Park (Refer Figure 1).

Stage 2 works will include replacing the two remaining, southern-most groyne structures (Groynes #1 and #2), and extending the existing seawall between Groyne #2 and #3 to further protect the foreshore. See the map on page 3 for more information.

The replacement groynes and seawall extension will be constructed using sand-filled geotextile containers (also known as geobags or geofabric bags) and ensure the continued protection of the Cotton Tree precinct from the current and future impacts of coastal erosion.

The adjacent Cotton Tree Holiday Park will remain open to guests during these works. Community access will be maintained to the beach and river in dedicated 'safe zones'. Please see the map on page 3 for more information.

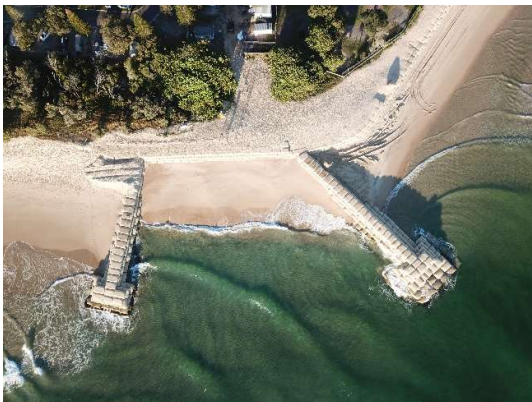


Figure 1. Stage 1 completed works. Aerial image of renewed northern Groynes #3 and #4

### Construction timeframe, zones and hours

To minimise inconvenience to the community, including staff and guests of Cotton Tree Holiday Park, works will take place from Monday to Friday during the day only (6am – 6pm).

Due to the nature of these works, all construction must be timed with consideration of tidal and weather conditions. For this reason, works may not take place every day.

#### Zone 1 – Groynes #1 and #2 reconstruction (early-May – mid-July 2022)

- Deconstruction of existing deteriorated sand-filled geotextile container groynes
- Construction of new sand-filled geotextile container groynes - including supply, filling and placement of sand containers.

#### Zone 2 – Extension of existing seawall (\*early-July – late-September 2022)

- Construction of new sand-filled geotextile container seawall extension - including supply, filling and placement of sand containers

\*Exact timing of the seawall extension is subject to lodged development application approval and will be confirmed as soon as possible.

### What to expect during these works?

#### Community access to Cotton Tree Holiday Park, Beach and River

Community access will be maintained to the Cotton Tree Holiday Park, beach and river in dedicated 'safe zones' during construction.

For the community's safety, some areas of the beach will be temporarily fenced off and temporary swimming exclusion zones will apply.

Alternative pedestrian pathways will be in place at times.

Signage will help to communicate any temporary access changes.

### **Emergency vehicles and Surf Life Saving Camera**

Emergency vehicle access will remain to the beach.

The Surf Life Saving camera will continue to operate.

### **Alexandra Parade Beach Car Park**

To help progress the works as safely and quickly as possible a section of the Alexandra Parade beach car park will be temporarily closed and used by the construction contractor. Approximately 50% of the car park will remain available for community use.

Please see the map on page 3 for more information.

### **Construction vehicles**

Heavy machinery including trucks and excavators will be in operation with intermittent noise impacts expected.

At times pedestrian and vehicle traffic control will be in place.

The construction team will minimise construction impacts wherever safe and possible to do so.

### **Environmental controls**

As a condition of the construction tender, council has strict environmental conditions in place. The relevant environmental permits have been completed to undertake these works.

Sand used to fill the new geotextile containers will be sourced directly adjacent to the works site, with the sand from the old containers reclaimed and used to replenish the beach.

At times, water surrounding the groynes may seem slightly discoloured due to sand disturbance. This is no cause for alarm and water quality monitoring will be in place.

### **Further information**

To learn more about this project, including the extensive community consultation and planning to date please visit council's website <http://bit.ly/maroochyrivergroyne>

To contact Council's project team please email [maroochygroyne@sunshinecoast.qld.gov.au](mailto:maroochygroyne@sunshinecoast.qld.gov.au) or contact Council's customer service via the details below (please quote Maroochy Groyne Field Renewal).



### **A note from your local councillor**

Completing the renewal of these groynes and seawall extension is essential for protecting our beautiful Cotton Tree coastline from the impacts of erosion. The works have been timed to take place after Easter and prior to the peak Christmas holiday season to minimise impacts to the community. As was the case with Stage 1 works, the project team will work hard to minimise inconvenience to residents and visitors during construction. Thank you for your understanding.

Cr Joe Natoli





Figure 2: Community access areas and temporary closure of beach access and partial carpark areas