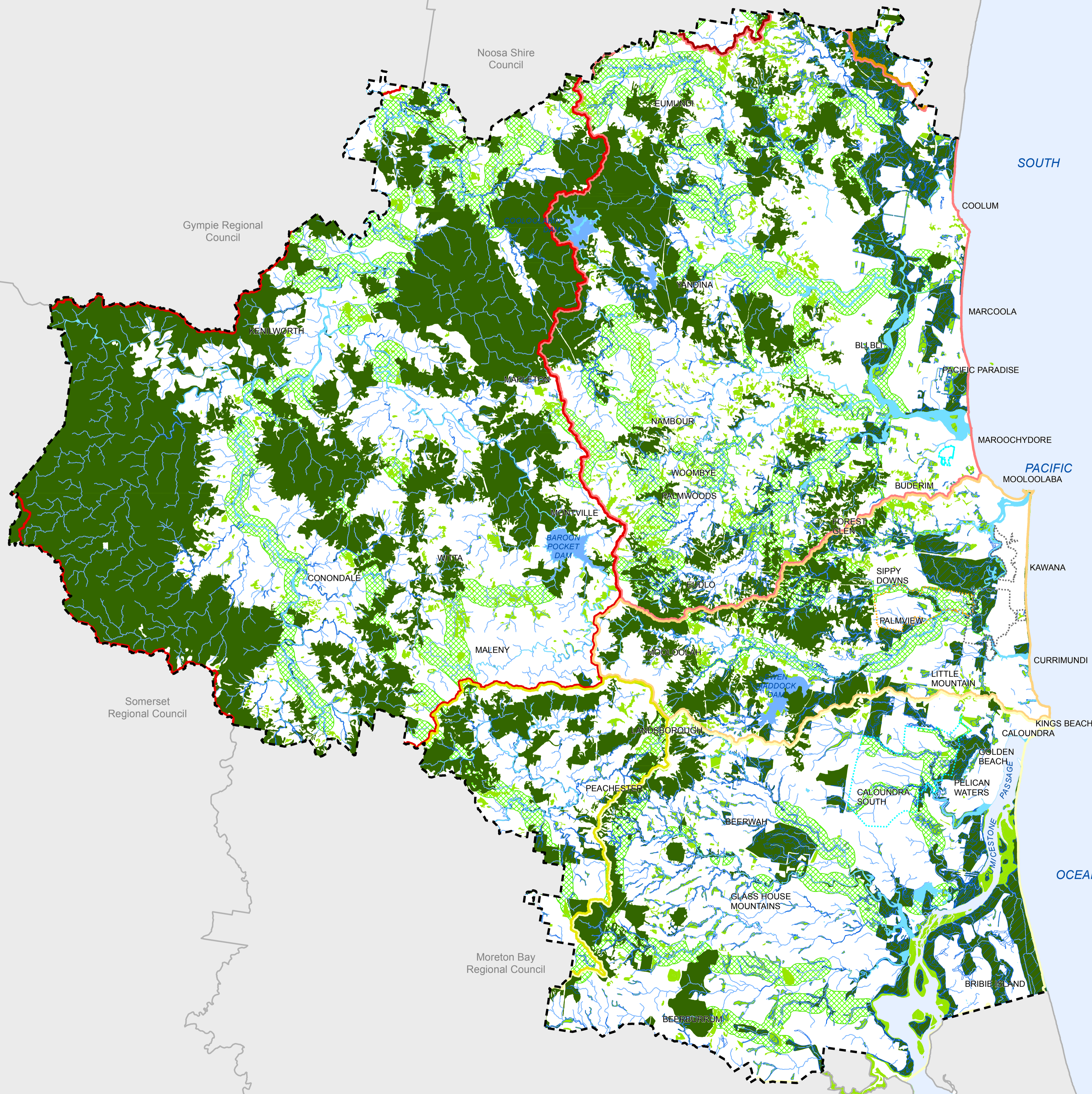


# Strategic Framework Map 5 Natural Environment Elements



**Ecologically Important Areas** (Note 1)

- Core Habitat Areas (Note 2)
- Connecting Habitat Areas (Note 3)
- Natural Wetlands
- Natural Waterbodies
- Natural Waterways (Note 4)

**Ecological Linkages**

- Existing and Future Linkages (Note 5)

**Major Natural Catchments**

- Maroochy River Catchment
- Mary River Catchment
- Mary River North Catchment
- Mooloolah River Catchment
- Noosa River Catchment
- Pumicestone Passage Catchment
- Stanley River Catchment

**Other Elements**

- Local Government Area Boundary
- Declared Master Planned Area (see Part 10 - Other Plans)
- Land within Development Control Plan 1 - Kawana Waters which is the subject of the Kawana Waters Development Agreement (see Section 1.2 - Planning Scheme Components)
- Priority Development Area (subject to the *Economic Development Act 2012*) (Note 6)
- Ocean
- Water Supply Dams

**Note 1 : Ecologically Important Areas**  
Identified on this map include areas of High Ecological Value as Identified by the State Government (Regional Ecosystem Version 6b - Publication Date: 06/11/2009).

**Note 2 : Core Habitat Areas**  
Defined as an area greater than 50 hectares of contiguous (connected) remnant and regrowth vegetation and may comprise:  
 - Multiple vegetation community types (Regional Ecosystems);  
 - Wetlands, rivers and wide coastal waterways that traverse the core area;  
 - Known rare and threatened flora and fauna populations;  
 - Lands with a variety of tenures;  
 - Small non-habitat areas (e.g. clear paddocks) that are enclosed within the core;  
 - Infrastructure easements (e.g. transmission lines) that retain a grassy ground cover or shrubby understorey that reflects the habitat characteristics of nearby habitat types; and  
 - Relatively narrow infrastructure corridors such as local roads or rail easements.

**Note 3 : Connecting Habitat Areas**  
Defined as all other remnant and regrowth vegetation not within a Core Habitat Area and may comprise:  
 - Habitat areas less than 50 hectares in size;  
 - Fragmented and isolated patches of vegetation/habitat greater than 1 hectare in size;  
 - A group of loosely aggregated, but proximal, small habitat fragments in natural or near natural condition; and  
 - Groups of habitat fragments within discrete physical regions such as catchments, landform elements that were not identified as Core Habitat Areas.

**Note 4 : Natural Waterways**  
Stream orders 3 and above only are identified on this map.

**Note 5 : Existing and Future Linkages**  
Comprise of:  
 - Existing (identified through previous council studies) or future opportunities to connect Core Habitat Areas;  
 - Linear habitat or landscape features that provide a link or are components of a more extensive link between Core Habitat Areas; and  
 - Terrestrial or riparian habitat landscape features.

**Note 6 : The Caloundra South Priority Development Area (PDA) is subject to the *Economic Development Act 2012*. The Natural environment elements identified on this map for the Caloundra South PDA reflects the Caloundra South Priority Development Area Infrastructure Agreement (Local Government Infrastructure) dated 2 November 2015.**

This Strategic Framework map graphically represents elements of the Natural Environment theme at a conceptual level and is not intended to be interrogated at the cadastre level.

**Disclaimer**  
While every care is taken to ensure the accuracy of this product, neither the Sunshine Coast Regional Council nor the State of Queensland makes any representations or warranties about its accuracy, reliability, completeness or suitability for any particular purpose and disclaims all responsibility and all liability (including without limitation, liability in negligence) for all expenses, losses, damages (including indirect or consequential damage) and costs that may occur as a result of the product being inaccurate or incomplete in any way or for any reason.

© Crown and Council Copyright Reserved 2017

Geocentric Datum of Australia 1994 (GDA94)

Approx Scale @ A1 1:120,000

0 2.5 5 10 15  
Kilometres