

Regional Infrastructure Overlay Map

Land Subject to Regional Infrastructure Overlay

- Gas Pipeline Corridor and Buffer
- High Voltage Electricity Line and Buffer (Electricity - Distribution)
- High Voltage Electricity Line and Buffer (Electricity - Transmission)
- Water Supply Pipeline and Buffer
- Wastewater Treatment Plant and Buffer
- Major Road Corridor and Buffer ^(Note 1)
- Railway Corridor and Buffer
- Dedicated Transit Corridor and Buffer

- ### Other Elements
- Local Plan Area Boundary
 - Declared Master Planned Area (see Part 10 - Other Plans)
 - Land within Development Control Plan 1 - Kawana Waters which is the subject of the Kawana Waters Development Agreement (see Section 1.2 - Planning Scheme Components)
 - Priority Development Area (subject to the *Economic Development Act 2012*)
 - Dedicated Public Transport Corridor (CAMCOS)
 - DCDB 31 January 2017 © State Government

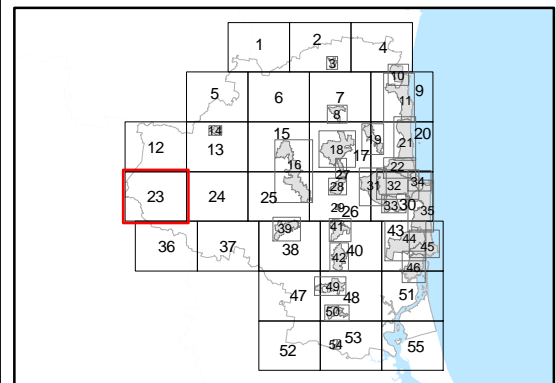
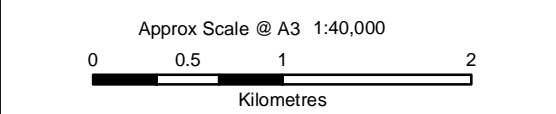
Note - Overlays provide a trigger for consideration of an overlay issue to be verified by further on-site investigations.

Note - In certain circumstances pre-existing development approvals may override the operation of an overlay.

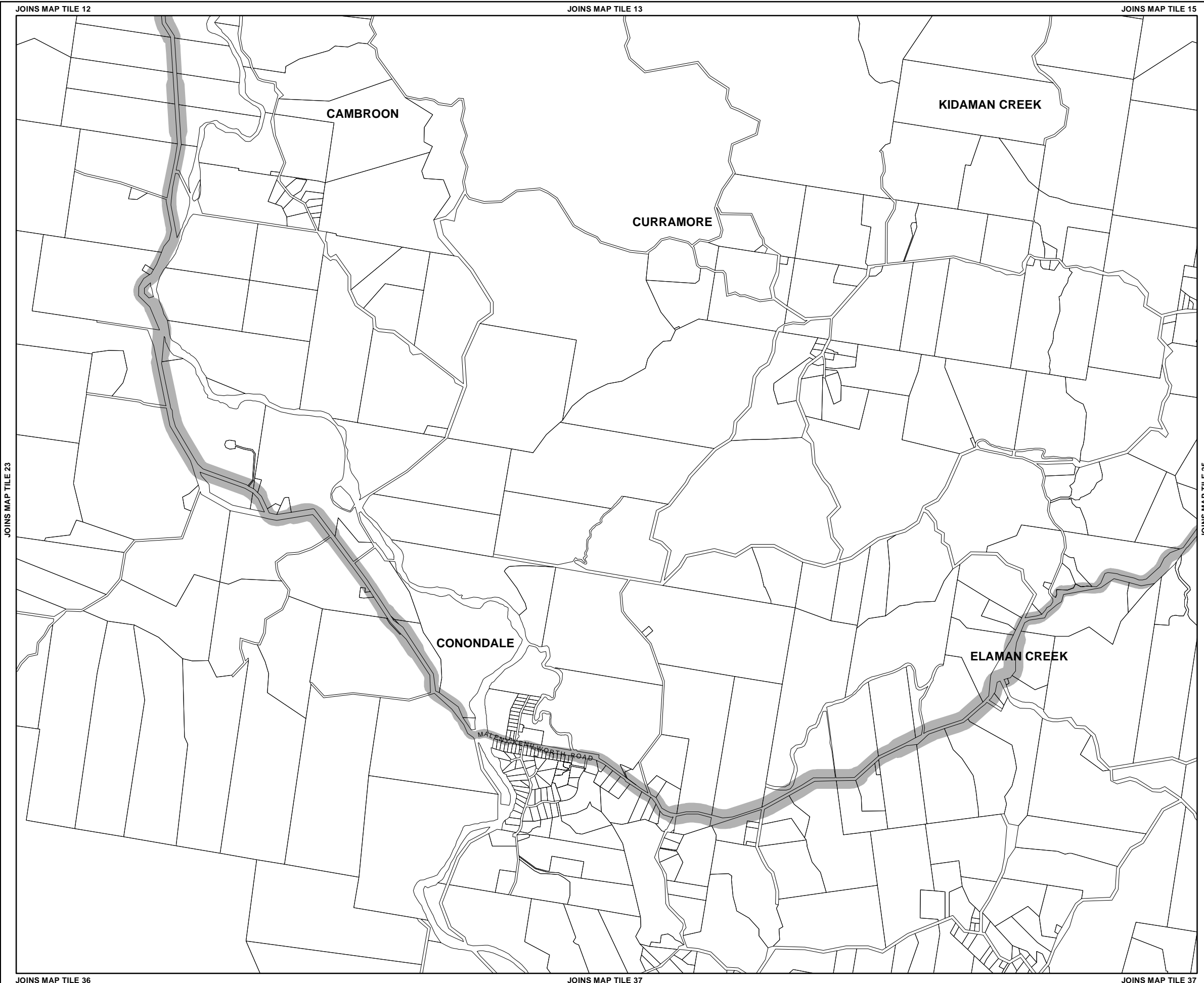
Note 1 : The Major Road Corridor and Buffer layer incorporates designated Transport Noise Corridors for the purposes of the *Building Act 1975*.

Disclaimer
 While every care is taken to ensure the accuracy of this product, neither the Sunshine Coast Regional Council nor the State of Queensland makes any representations or warranties about its accuracy, reliability, completeness or suitability for any particular purpose and disclaims all responsibility and all liability (including without limitation, liability in negligence) for all expenses, losses, damages (including indirect or consequential damage) and costs that may occur as a result of the product being inaccurate or incomplete in any way or for any reason.

© Crown and Council Copyright Reserved 2017
 Geocentric Datum of Australia 1994 (GDA94)



Overlay Map OVM23K



Regional Infrastructure Overlay Map

Land Subject to Regional Infrastructure Overlay

- Gas Pipeline Corridor and Buffer
- High Voltage Electricity Line and Buffer (Electricity - Distribution)
- High Voltage Electricity Line and Buffer (Electricity - Transmission)
- Water Supply Pipeline and Buffer
- Wastewater Treatment Plant and Buffer
- Major Road Corridor and Buffer ^(Note 1)
- Railway Corridor and Buffer
- Dedicated Transit Corridor and Buffer

- ### Other Elements
- Local Plan Area Boundary
 - Declared Master Planned Area (see Part 10 - Other Plans)
 - Land within Development Control Plan 1 - Kawana Waters which is the subject of the Kawana Waters Development Agreement (see Section 1.2 - Planning Scheme Components)
 - Priority Development Area (subject to the *Economic Development Act 2012*)
 - Dedicated Public Transport Corridor (CAMCOS)
 - DCDB 31 January 2017 © State Government

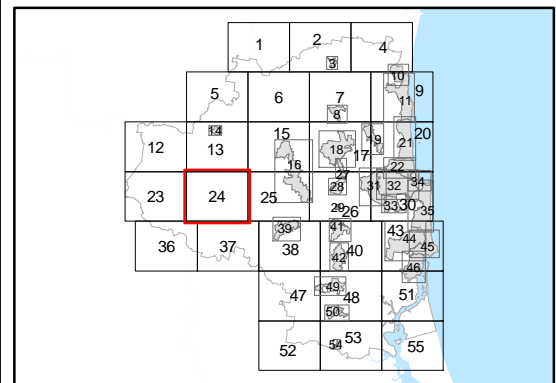
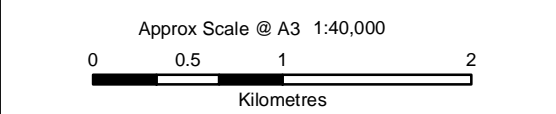
Note - Overlays provide a trigger for consideration of an overlay issue to be verified by further on-site investigations.

Note - In certain circumstances pre-existing development approvals may override the operation of an overlay.

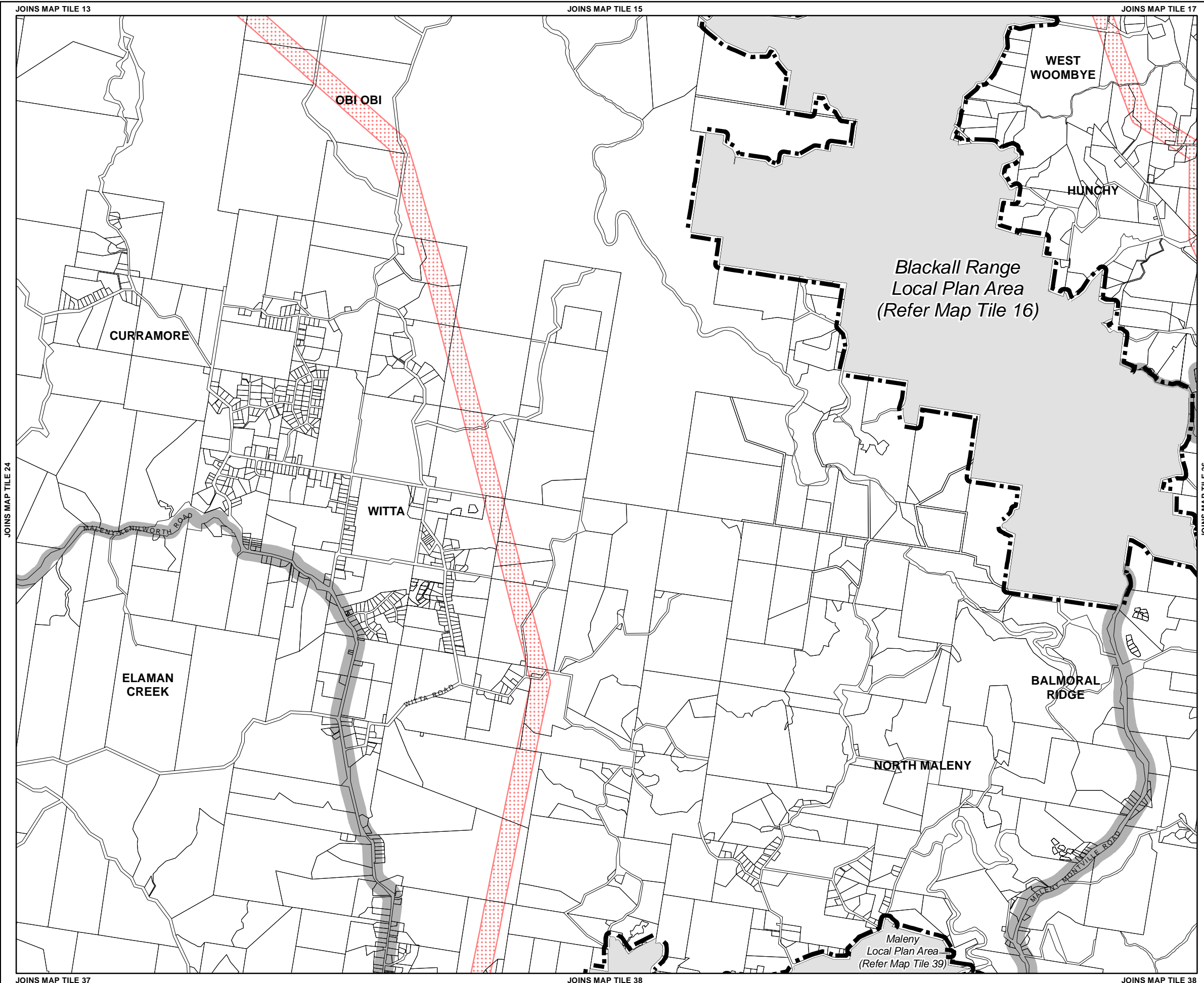
Note 1 : The Major Road Corridor and Buffer layer incorporates designated Transport Noise Corridors for the purposes of the *Building Act 1975*.

Disclaimer
 While every care is taken to ensure the accuracy of this product, neither the Sunshine Coast Regional Council nor the State of Queensland makes any representations or warranties about its accuracy, reliability, completeness or suitability for any particular purpose and disclaims all responsibility and all liability (including without limitation, liability in negligence) for all expenses, losses, damages (including indirect or consequential damage) and costs that may occur as a result of the product being inaccurate or incomplete in any way or for any reason.

© Crown and Council Copyright Reserved 2017
 Geocentric Datum of Australia 1994 (GDA94)



Overlay Map OVM24K



Regional Infrastructure Overlay Map

Land Subject to Regional Infrastructure Overlay

- Gas Pipeline Corridor and Buffer
- High Voltage Electricity Line and Buffer (Electricity - Distribution)
- High Voltage Electricity Line and Buffer (Electricity - Transmission)
- Water Supply Pipeline and Buffer
- Wastewater Treatment Plant and Buffer
- Major Road Corridor and Buffer (Note 1)
- Railway Corridor and Buffer
- Dedicated Transit Corridor and Buffer

Other Elements

- Local Plan Area Boundary
- Declared Master Planned Area (see Part 10 - Other Plans)
- Land within Development Control Plan 1 - Kawana Waters which is the subject of the Kawana Waters Development Agreement (see Section 1.2 - Planning Scheme Components)
- Priority Development Area (subject to the Economic Development Act 2012)
- Dedicated Public Transport Corridor (CAMCOS)
- DCDB 31 January 2017 © State Government

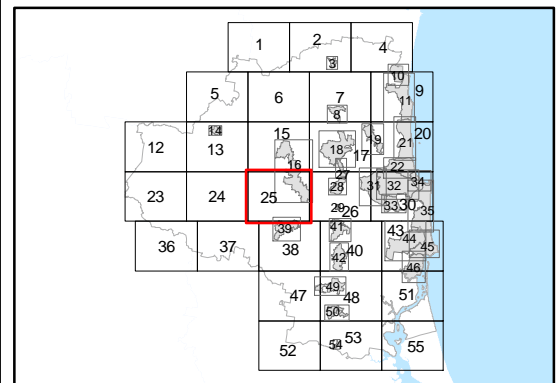
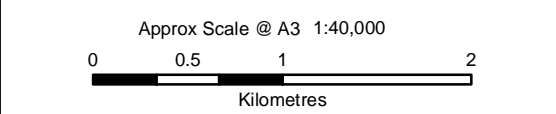
Note - Overlays provide a trigger for consideration of an overlay issue to be verified by further on-site investigations.

Note - In certain circumstances pre-existing development approvals may override the operation of an overlay.

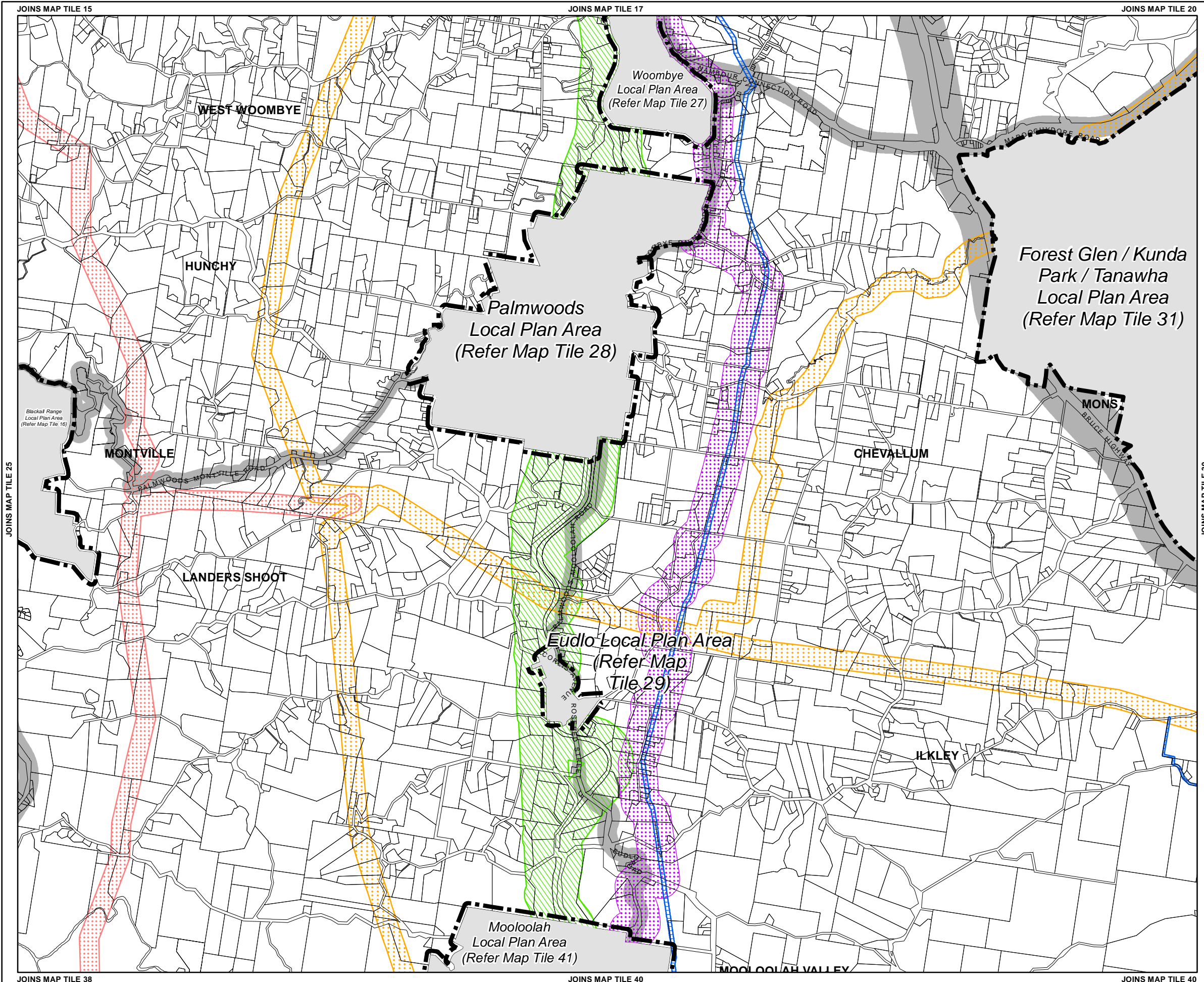
Note 1 : The Major Road Corridor and Buffer layer incorporates designated Transport Noise Corridors for the purposes of the *Building Act 1975*.

Disclaimer
While every care is taken to ensure the accuracy of this product, neither the Sunshine Coast Regional Council nor the State of Queensland makes any representations or warranties about its accuracy, reliability, completeness or suitability for any particular purpose and disclaims all responsibility and all liability (including without limitation, liability in negligence) for all expenses, losses, damages (including indirect or consequential damage) and costs that may occur as a result of the product being inaccurate or incomplete in any way or for any reason.

© Crown and Council Copyright Reserved 2017
Geocentric Datum of Australia 1994 (GDA94)



Overlay Map OVM25K



Regional Infrastructure Overlay Map

Land Subject to Regional Infrastructure Overlay

- Gas Pipeline Corridor and Buffer
- High Voltage Electricity Line and Buffer (Electricity - Distribution)
- High Voltage Electricity Line and Buffer (Electricity - Transmission)
- Water Supply Pipeline and Buffer
- Wastewater Treatment Plant and Buffer
- Major Road Corridor and Buffer (Note 1)
- Railway Corridor and Buffer
- Dedicated Transit Corridor and Buffer

Other Elements

- Local Plan Area Boundary
- Declared Master Planned Area (see Part 10 - Other Plans)
- Land within Development Control Plan 1 - Kawana Waters which is the subject of the Kawana Waters Development Agreement (see Section 1.2 - Planning Scheme Components)
- Priority Development Area (subject to the Economic Development Act 2012)
- Dedicated Public Transport Corridor (CAMCOS)
- DCDB 31 January 2017 © State Government

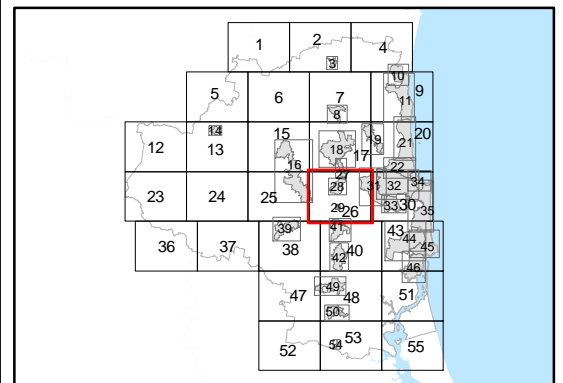
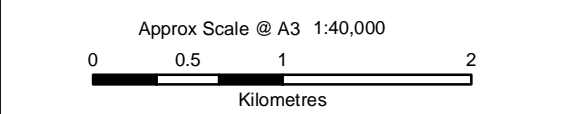
Note - Overlays provide a trigger for consideration of an overlay issue to be verified by further on-site investigations.

Note - In certain circumstances pre-existing development approvals may override the operation of an overlay.

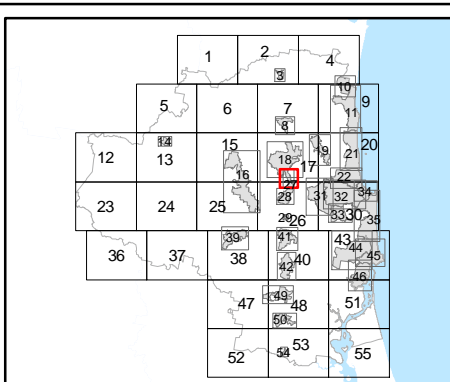
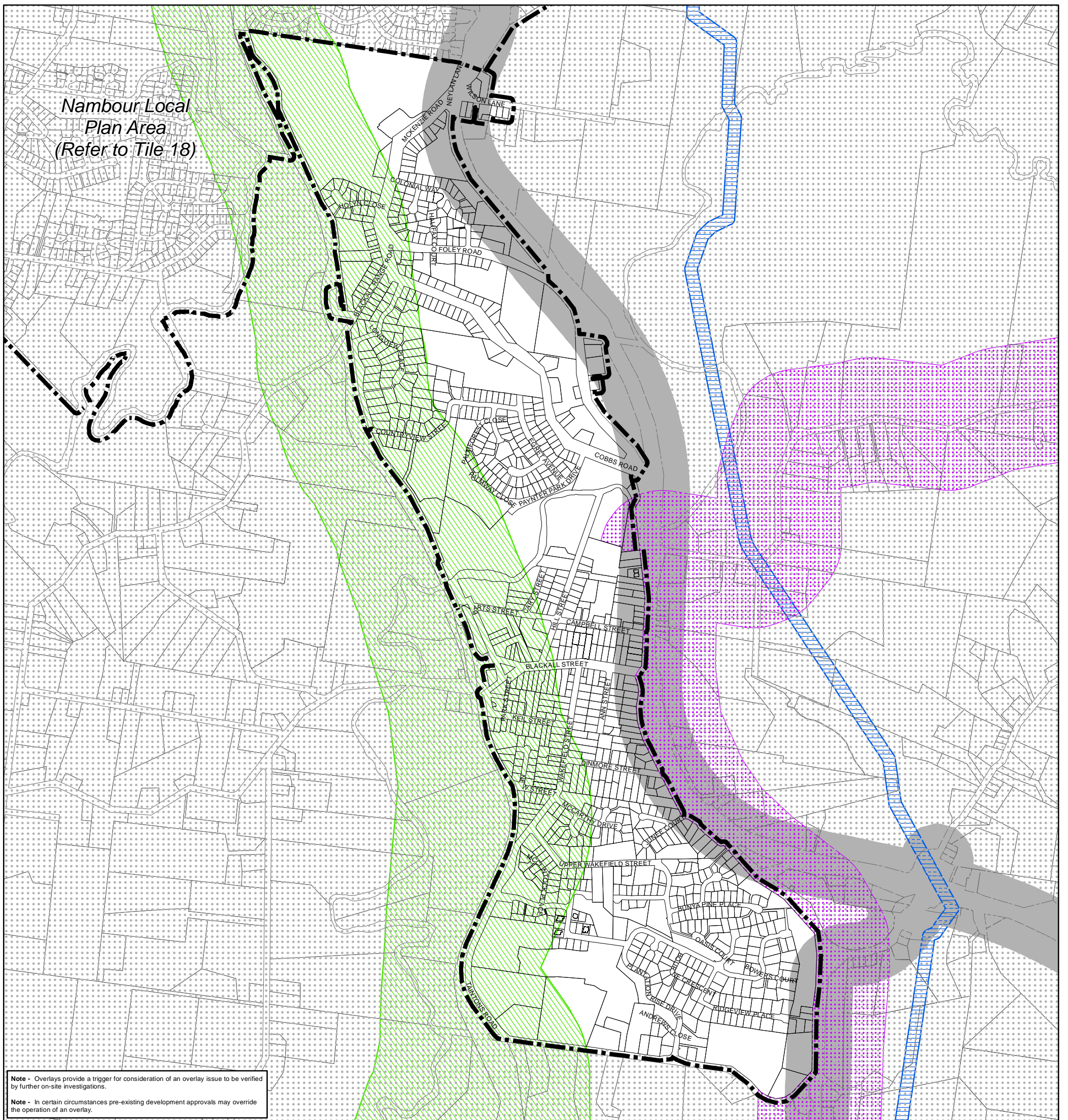
Note 1: The Major Road Corridor and Buffer layer incorporates designated Transport Noise Corridors for the purposes of the *Building Act 1975*.

Disclaimer
While every care is taken to ensure the accuracy of this product, neither the Sunshine Coast Regional Council nor the State of Queensland makes any representations or warranties about its accuracy, reliability, completeness or suitability for any particular purpose and disclaims all responsibility and all liability (including without limitation, liability in negligence) for all expenses, losses, damages (including indirect or consequential damage) and costs that may occur as a result of the product being inaccurate or incomplete in any way or for any reason.

© Crown and Council Copyright Reserved 2017
Geocentric Datum of Australia 1994 (GDA94)



Overlay Map OVM26K



Regional Infrastructure Overlay Map

Land Subject to Regional Infrastructure Overlay

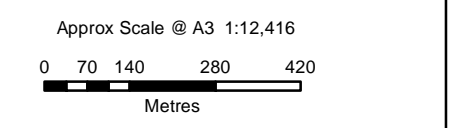
- Gas Pipeline Corridor and Buffer
- High Voltage Electricity Line and Buffer (Electricity - Distribution)
- High Voltage Electricity Line and Buffer (Electricity - Transmission)
- Water Supply Pipeline and Buffer
- Wastewater Treatment Plant and Buffer
- Major Road Corridor and Buffer (Note 1)
- Railway Corridor and Buffer
- Dedicated Transit Corridor and Buffer

Other Elements

- Local Plan Area Boundary
- Declared Master Planned Area (see Part 10 - Other Plans)
- Land within Development Control Plan 1 - Kawana Waters which is the subject of the Kawana Waters Development Agreement (see Section 1.2 - Planning Scheme Components)
- Priority Development Area (subject to the *Economic Development Act 2012*)
- Dedicated Public Transport Corridor (CAMCOS)
- DCDB 31 January 2017 © State Government

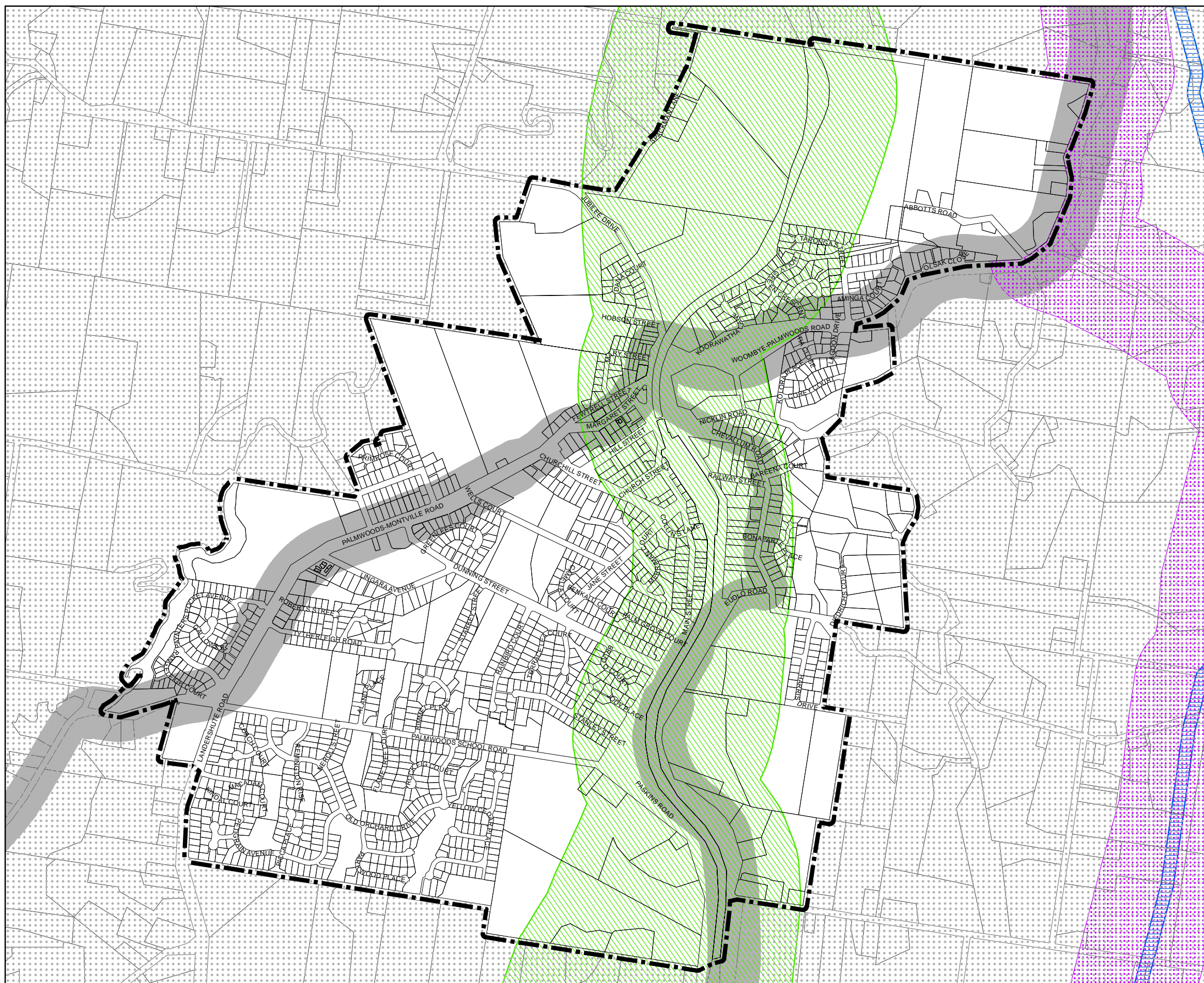
Disclaimer
While every care is taken to ensure the accuracy of this product, neither the Sunshine Coast Regional Council nor the State of Queensland makes any representations or warranties about its accuracy, reliability, completeness or suitability for any particular purpose and disclaims all responsibility and all liability (including without limitation, liability in negligence) for all expenses, losses, damages (including indirect or consequential damage) and costs that may occur as a result of the product being inaccurate or incomplete in any way or for any reason.

© Crown and Council Copyright Reserved 2017
Geocentric Datum of Australia 1994 (GDA94)



Overlay Map OVM27K

Note 1: The Major Road Corridor and Buffer layer incorporates designated Transport Noise Corridors for the purposes of the *Building Act 1975*.



JOINS MAP TILE 26

Regional Infrastructure Overlay Map

Land Subject to Regional Infrastructure Overlay

- Gas Pipeline Corridor and Buffer
- High Voltage Electricity Line and Buffer (Electricity - Distribution)
- High Voltage Electricity Line and Buffer (Electricity - Transmission)
- Water Supply Pipeline and Buffer
- Wastewater Treatment Plant and Buffer
- Major Road Corridor and Buffer (Note 1)
- Railway Corridor and Buffer
- Dedicated Public Transport Corridor and Buffer

Other Elements

- Local Plan Area Boundary
- Declared Master Planned Area (see Part 10 - Other Plans)
- Land within Development Control Plan 1 - Kawana Waters which is the subject of the Kawana Waters Development Agreement (see Section 1.2 - Planning Scheme Components)
- Priority Development Area (subject to the Economic Development Act 2012)
- Dedicated Public Transport Corridor (CAMCOS)
- DCDB 31 January 2017 © State Government

Note - Overlays provide a trigger for consideration of an overlay issue to be verified by further on-site investigations.

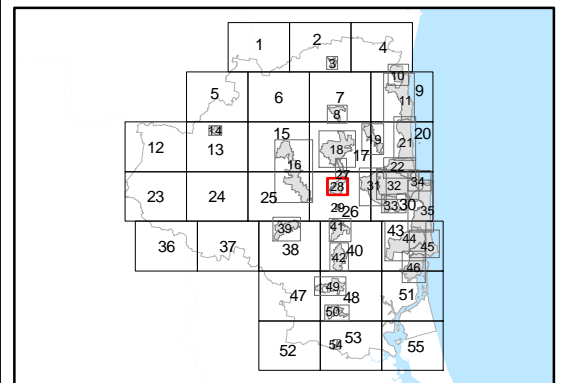
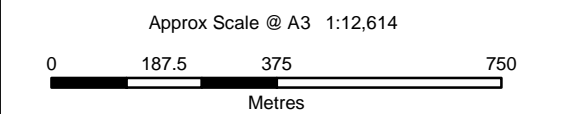
Note - In certain circumstances pre-existing development approvals may override the operation of an overlay.

Note 1 : The Major Road Corridor and Buffer layer incorporates designated Transport Noise Corridors for the purposes of the *Building Act 1975*.

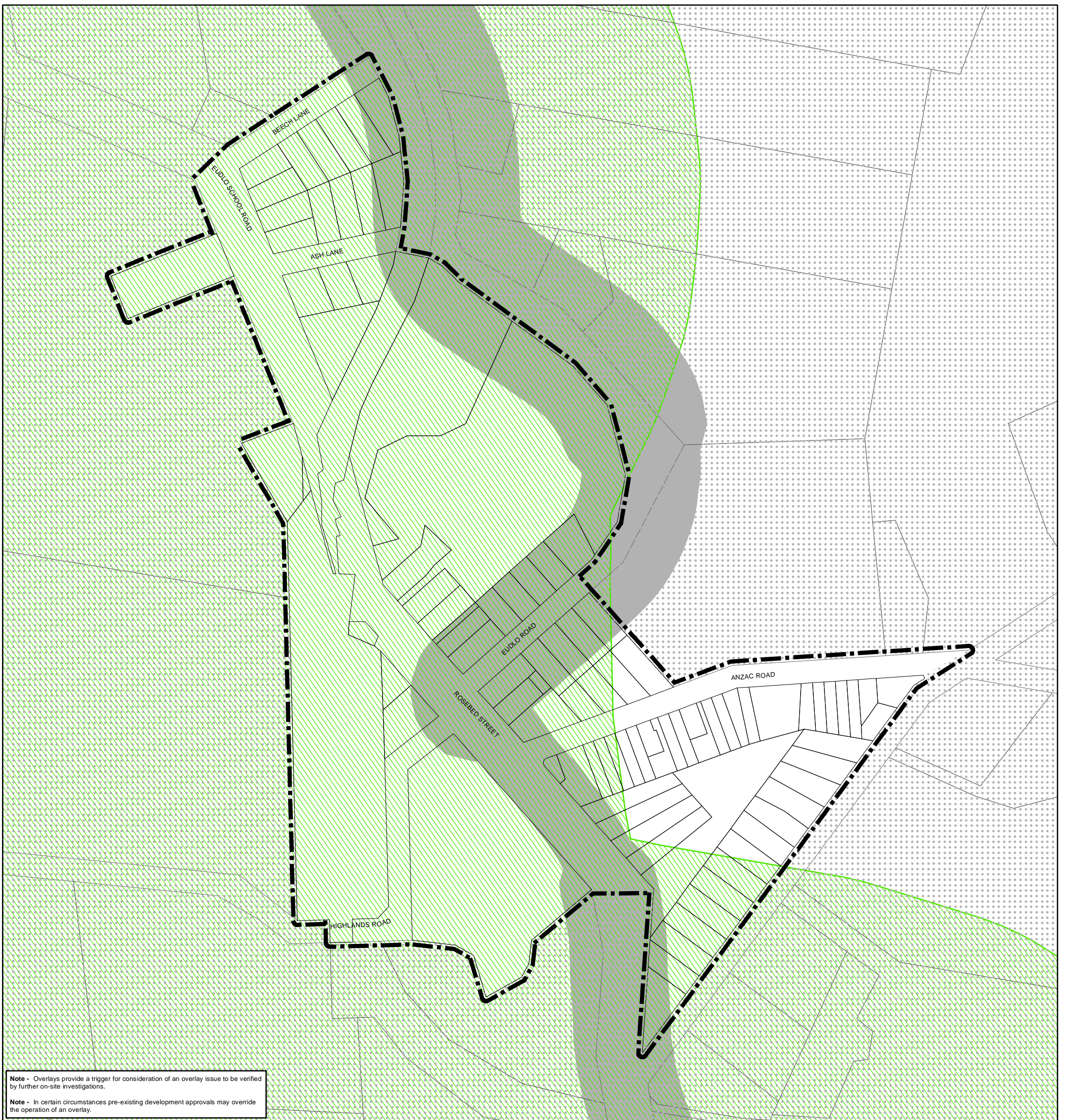
Disclaimer
While every care is taken to ensure the accuracy of this product, neither the Sunshine Coast Regional Council nor the State of Queensland makes any representations or warranties about its accuracy, reliability, completeness or suitability for any particular purpose and disclaims all responsibility and all liability (including without limitation, liability in negligence) for all expenses, losses, damages (including indirect or consequential damage) and costs that may occur as a result of the product being inaccurate or incomplete in any way or for any reason.

© Crown and Council Copyright Reserved 2017

Geocentric Datum of Australia 1994 (GDA94)

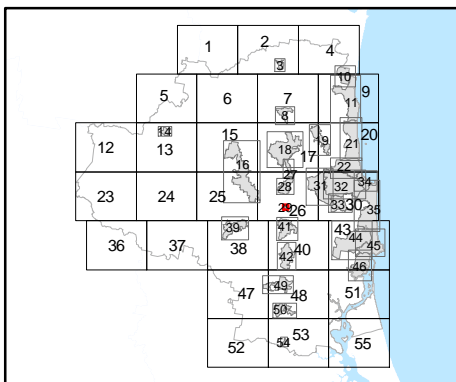


Overlay Map OVM28K



Note - Overlays provide a trigger for consideration of an overlay issue to be verified by further on-site investigations.

Note - In certain circumstances pre-existing development approvals may override the operation of an overlay.



Regional Infrastructure Overlay Map

Land Subject to Regional Infrastructure Overlay

- Gas Pipeline Corridor and Buffer
- High Voltage Electricity Line and Buffer (Electricity - Distribution)
- High Voltage Electricity Line and Buffer (Electricity - Transmission)
- Water Supply Pipeline and Buffer
- Wastewater Treatment Plant and Buffer
- Major Road Corridor and Buffer (Note 1)
- Railway Corridor and Buffer
- Dedicated Transit Corridor and Buffer

Other Elements

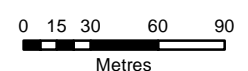
- Local Plan Area Boundary
- Declared Master Planned Area (see Part 10 - Other Plans)
- Land within Development Control Plan 1 - Kawana Waters which is the subject of the Kawana Waters Development Agreement (see Section 1.2 - Planning Scheme Components)
- Priority Development Area (subject to the *Economic Development Act 2012*)
- Dedicated Public Transport Corridor (CAMCOS)
- DCDB 31 January 2017 © State Government

Disclaimer
While every care is taken to ensure the accuracy of this product, neither the Sunshine Coast Regional Council nor the State of Queensland makes any representations or warranties about its accuracy, reliability, completeness or suitability for any particular purpose and disclaims all responsibility and all liability (including without limitation, liability in negligence) for all expenses, losses, damages (including indirect or consequential damage) and costs that may occur as a result of the product being inaccurate or incomplete in any way or for any reason.

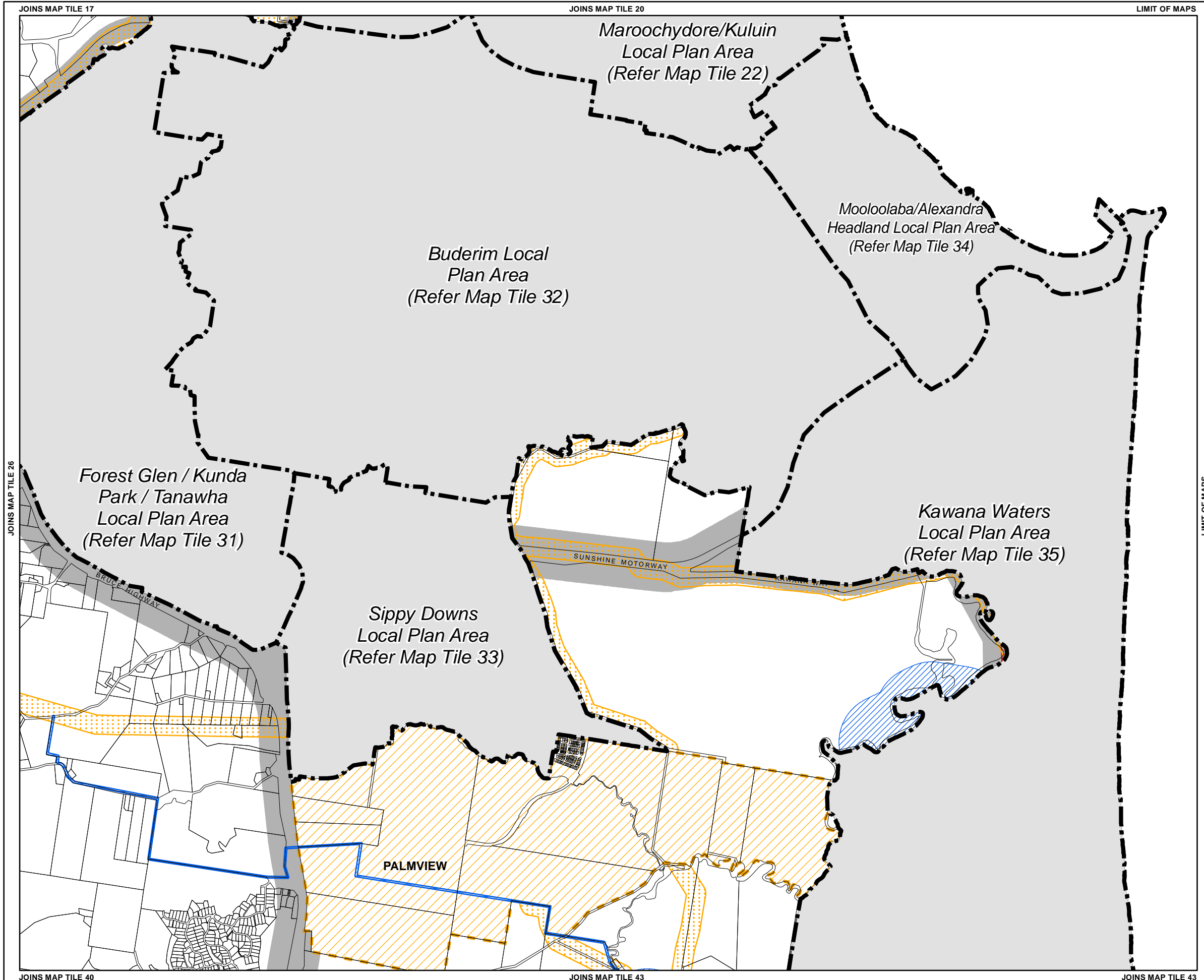
© Crown and Council Copyright Reserved 2017

Geocentric Datum of Australia 1994 (GDA94)

Approx Scale @ A3 1:3,379



Note 1 : The Major Road Corridor and Buffer layer incorporates designated Transport Noise Corridors for the purposes of the *Building Act 1975*.



Regional Infrastructure Overlay Map

Land Subject to Regional Infrastructure Overlay

- Gas Pipeline Corridor and Buffer
- High Voltage Electricity Line and Buffer (Electricity - Distribution)
- High Voltage Electricity Line and Buffer (Electricity - Transmission)
- Water Supply Pipeline and Buffer
- Wastewater Treatment Plant and Buffer
- Major Road Corridor and Buffer ^(Note 1)
- Railway Corridor and Buffer
- Dedicated Transit Corridor and Buffer

Other Elements

- Local Plan Area Boundary
- Declared Master Planned Area (see Part 10 - Other Plans)
- Land within Development Control Plan 1 - Kawana Waters which is the subject of the Kawana Waters Development Agreement (see Section 1.2 - Planning Scheme Components)
- Priority Development Area (subject to the Economic Development Act 2012)
- Dedicated Public Transport Corridor (CAMCOS)
- DCDB 31 January 2017 © State Government

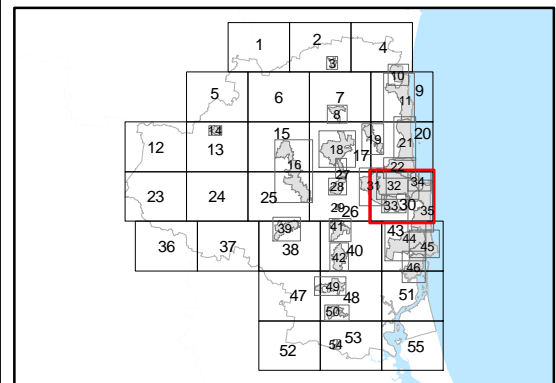
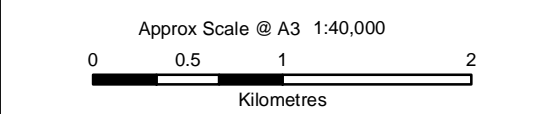
Note - Overlays provide a trigger for consideration of an overlay issue to be verified by further on-site investigations.

Note - In certain circumstances pre-existing development approvals may override the operation of an overlay.

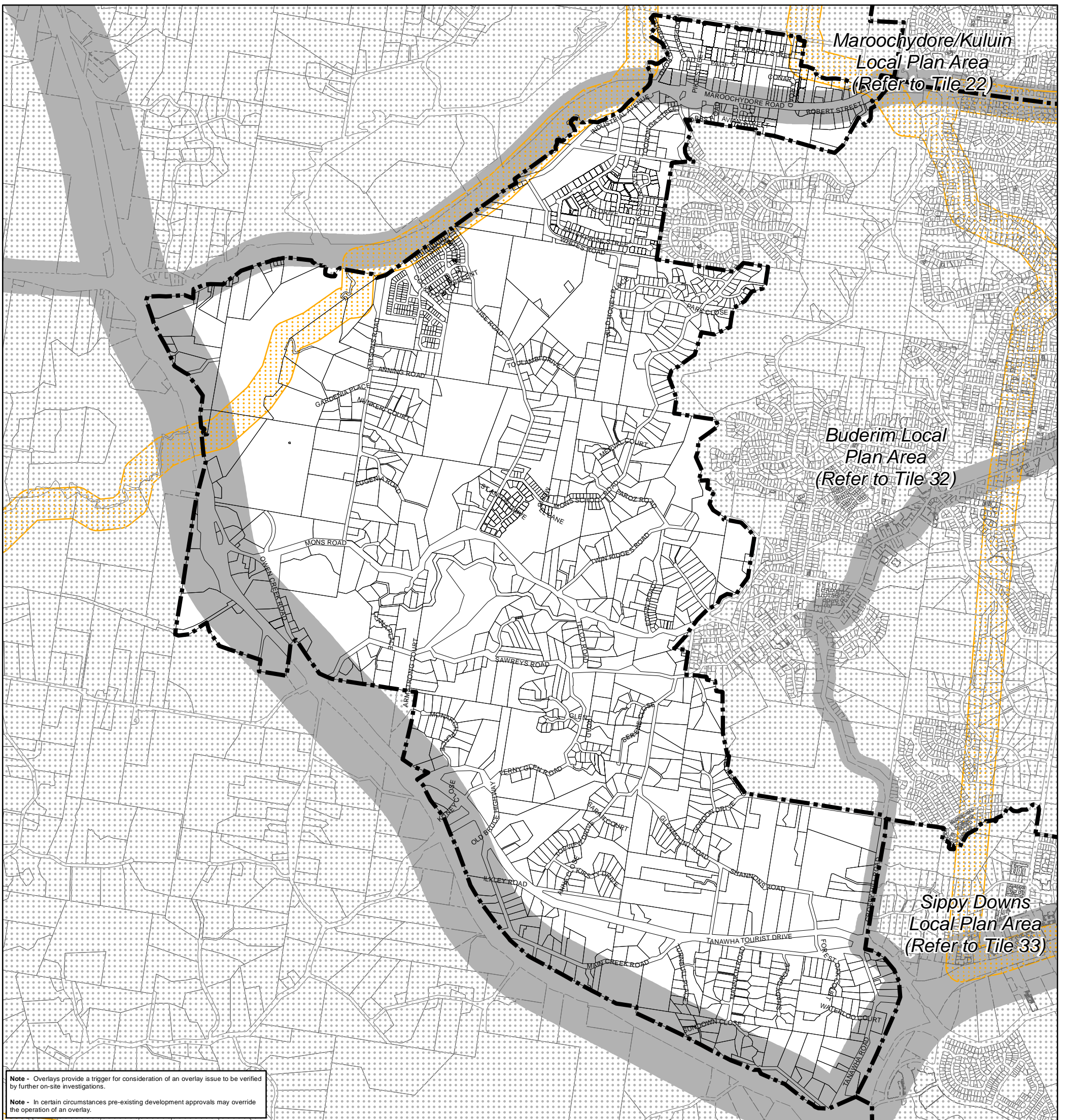
Note 1 : The Major Road Corridor and Buffer layer incorporates designated Transport Noise Corridors for the purposes of the *Building Act 1975*.

Disclaimer
While every care is taken to ensure the accuracy of this product, neither the Sunshine Coast Regional Council nor the State of Queensland makes any representations or warranties about its accuracy, reliability, completeness or suitability for any particular purpose and disclaims all responsibility and all liability (including without limitation, liability in negligence) for all expenses, losses, damages (including indirect or consequential damage) and costs that may occur as a result of the product being inaccurate or incomplete in any way or for any reason.

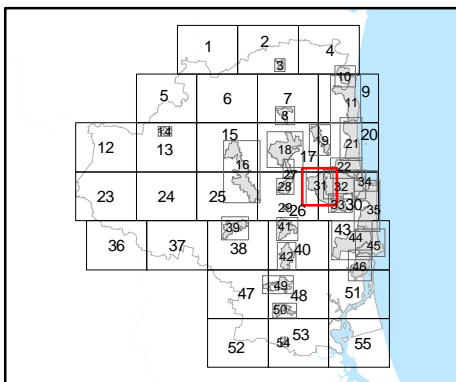
© Crown and Council Copyright Reserved 2017
Geocentric Datum of Australia 1994 (GDA94)



Overlay Map OVM30K



Note - Overlays provide a trigger for consideration of an overlay issue to be verified by further on-site investigations.
Note - In certain circumstances pre-existing development approvals may override the operation of an overlay.



Regional Infrastructure Overlay Map

- Land Subject to Regional Infrastructure Overlay**
- Gas Pipeline Corridor and Buffer
 - High Voltage Electricity Line and Buffer (Electricity - Distribution)
 - High Voltage Electricity Line and Buffer (Electricity - Transmission)
 - Water Supply Pipeline and Buffer
 - Wastewater Treatment Plant and Buffer
 - Major Road Corridor and Buffer (Note 1)
 - Railway Corridor and Buffer
 - Dedicated Transit Corridor and Buffer

- Other Elements**
- Local Plan Area Boundary
 - Declared Master Planned Area (see Part 10 - Other Plans)
 - Land within Development Control Plan 1 - Kawana Waters which is the subject of the Kawana Waters Development Agreement (see Section 1.2 - Planning Scheme Components)
 - Priority Development Area (subject to the Economic Development Act 2012)
 - Dedicated Public Transport Corridor (CAMCOS)
 - DCDB 31 January 2017 © State Government

Disclaimer
While every care is taken to ensure the accuracy of this product, neither the Sunshine Coast Regional Council nor the State of Queensland makes any representations or warranties about its accuracy, reliability, completeness or suitability for any particular purpose and disclaims all responsibility and all liability (including without limitation, liability in negligence) for all expenses, losses, damages (including indirect or consequential damage) and costs that may occur as a result of the product being inaccurate or incomplete in any way or for any reason.

© Crown and Council Copyright Reserved 2017
Geocentric Datum of Australia 1994 (GDA94)

Approx Scale @ A3 1:24,547

0 140 280 560 840
Metres

Note 1 : The Major Road Corridor and Buffer layer incorporates designated Transport Noise Corridors for the purposes of the Building Act 1975.



Regional Infrastructure Overlay Map

Land Subject to Regional Infrastructure Overlay

- Gas Pipeline Corridor and Buffer
- High Voltage Electricity Line and Buffer (Electricity - Distribution)
- High Voltage Electricity Line and Buffer (Electricity - Transmission)
- Water Supply Pipeline and Buffer
- Wastewater Treatment Plant and Buffer
- Major Road Corridor and Buffer (Note 1)
- Railway Corridor and Buffer
- Dedicated Public Transport Corridor and Buffer

Other Elements

- Local Plan Area Boundary
- Declared Master Planned Area (see Part 10 - Other Plans)
- Land within Development Control Plan 1 - Kawana Waters which is the subject of the Kawana Waters Development Agreement (see Section 1.2 - Planning Scheme Components)
- Priority Development Area (subject to the Economic Development Act 2012)
- Dedicated Public Transport Corridor (CAMCOS)
- DCDB 31 January 2017 © State Government

Note - Overlays provide a trigger for consideration of an overlay issue to be verified by further on-site investigations.

Note - In certain circumstances pre-existing development approvals may override the operation of an overlay.

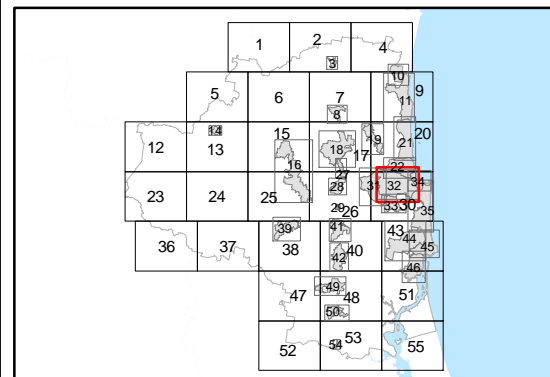
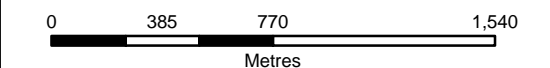
Note 1 : The Major Road Corridor and Buffer layer incorporates designated Transport Noise Corridors for the purposes of the *Building Act 1975*.

Disclaimer
While every care is taken to ensure the accuracy of this product, neither the Sunshine Coast Regional Council nor the State of Queensland makes any representations or warranties about its accuracy, reliability, completeness or suitability for any particular purpose and disclaims all responsibility and all liability (including without limitation, liability in negligence) for all expenses, losses, damages (including indirect or consequential damage) and costs that may occur as a result of the product being inaccurate or incomplete in any way or for any reason.

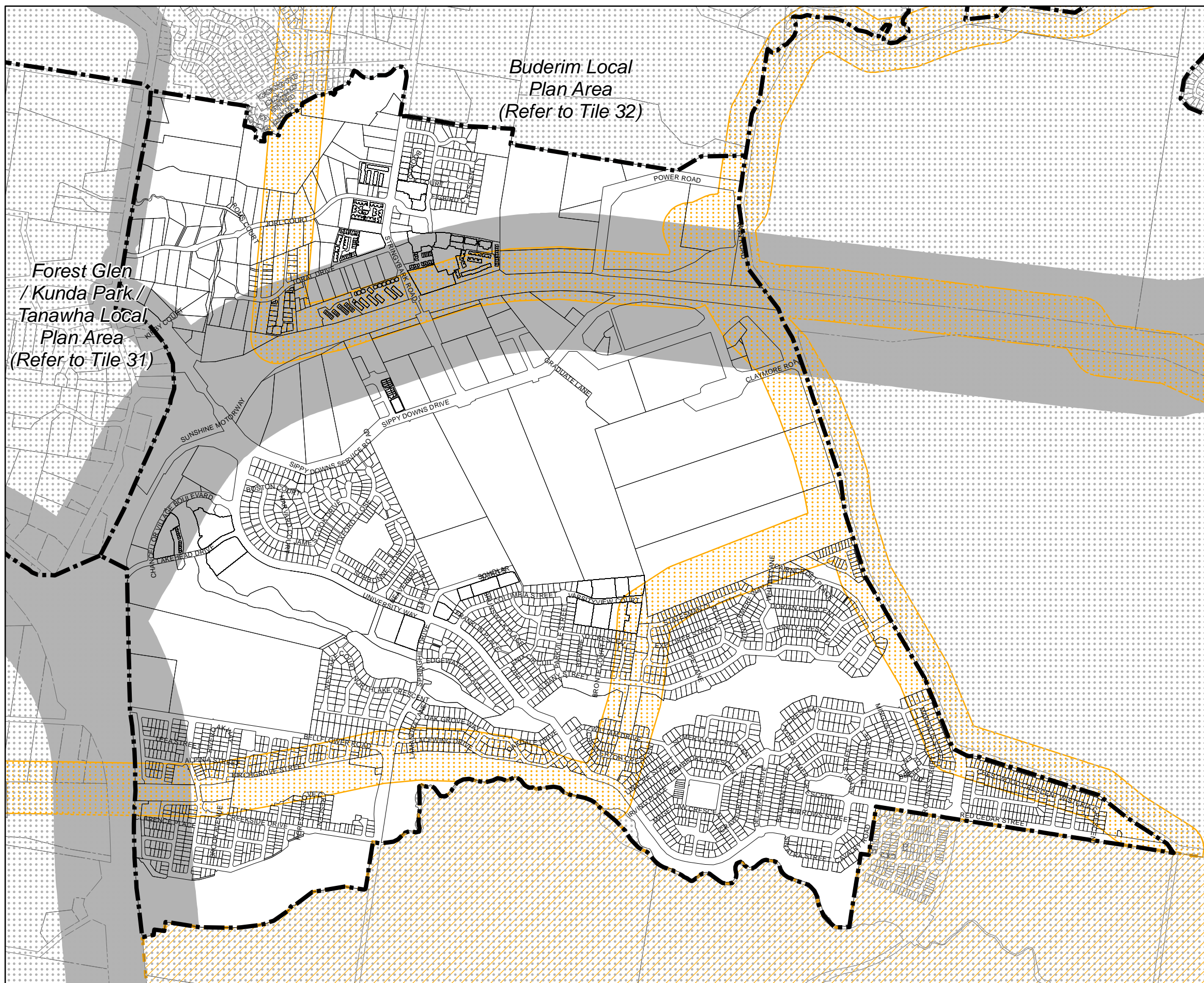
© Crown and Council Copyright Reserved 2017

Geocentric Datum of Australia 1994 (GDA94)

Approx Scale @ A3 1:26,279



Overlay Map OVM32K



JOINS MAP TILE 30

Regional Infrastructure Overlay Map

Land Subject to Regional Infrastructure Overlay

- Gas Pipeline Corridor and Buffer
- High Voltage Electricity Line and Buffer (Electricity - Distribution)
- High Voltage Electricity Line and Buffer (Electricity - Transmission)
- Water Supply Pipeline and Buffer
- Wastewater Treatment Plant and Buffer
- Major Road Corridor and Buffer ^(Note 1)
- Railway Corridor and Buffer
- Dedicated Public Transport Corridor and Buffer

Other Elements

- Local Plan Area Boundary
- Declared Master Planned Area (see Part 10 - Other Plans)
- Land within Development Control Plan 1 - Kawana Waters which is the subject of the Kawana Waters Development Agreement (see Section 1.2 - Planning Scheme Components)
- Priority Development Area (subject to the *Economic Development Act 2012*)
- Dedicated Public Transport Corridor (CAMCOS)
- DCDB 31 January 2017 © State Government

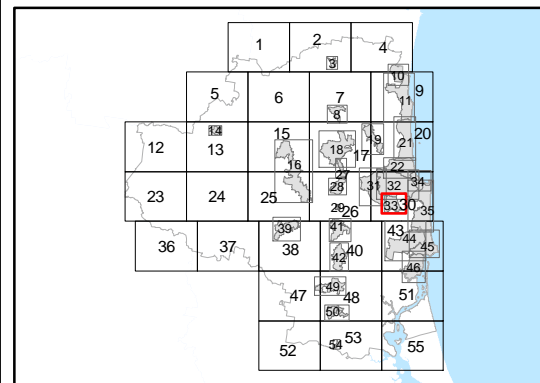
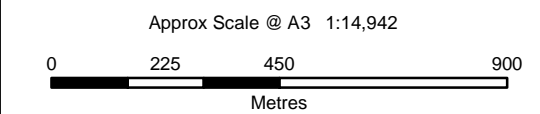
Note - Overlays provide a trigger for consideration of an overlay issue to be verified by further on-site investigations.

Note - In certain circumstances pre-existing development approvals may override the operation of an overlay.

Note 1 : The Major Road Corridor and Buffer layer incorporates designated Transport Noise Corridors for the purposes of the *Building Act 1975*.

Disclaimer
While every care is taken to ensure the accuracy of this product, neither the Sunshine Coast Regional Council nor the State of Queensland makes any representations or warranties about its accuracy, reliability, completeness or suitability for any particular purpose and disclaims all responsibility and all liability (including without limitation, liability in negligence) for all expenses, losses, damages (including indirect or consequential damage) and costs that may occur as a result of the product being inaccurate or incomplete in any way or for any reason.

© Crown and Council Copyright Reserved 2017
Geocentric Datum of Australia 1994 (GDA94)



Overlay Map OVM33K