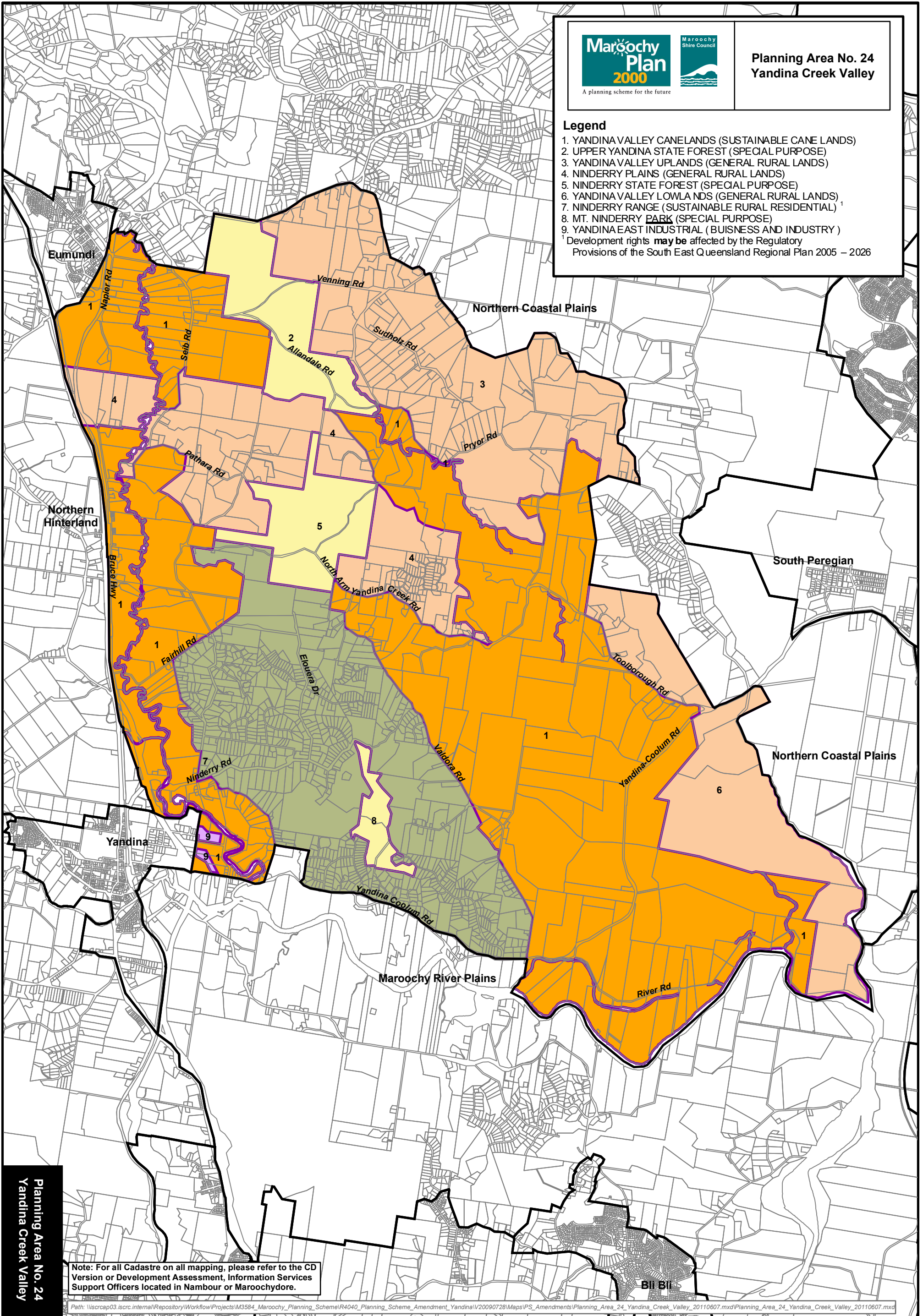


Legend

1. YANDINA VALLEY CANELANDS (SUSTAINABLE CANE LANDS)
 2. UPPER YANDINA STATE FOREST (SPECIAL PURPOSE)
 3. YANDINA VALLEY UPLANDS (GENERAL RURAL LANDS)
 4. NINDERRY PLAINS (GENERAL RURAL LANDS)
 5. NINDERRY STATE FOREST (SPECIAL PURPOSE)
 6. YANDINA VALLEY LOWLANDS (GENERAL RURAL LANDS)
 7. NINDERRY RANGE (SUSTAINABLE RURAL RESIDENTIAL) ¹
 8. MT. NINDERRY PARK (SPECIAL PURPOSE)
 9. YANDINA EAST INDUSTRIAL (BUSINESS AND INDUSTRY)
- ¹ Development rights **may be** affected by the Regulatory Provisions of the South East Queensland Regional Plan 2005 – 2026



Note: For all Cadastre on all mapping, please refer to the CD Version or Development Assessment, Information Services Support Officers located in Nambour or Maroochydhore.

Planning Area No. 24
Yandina Creek Valley