

APPENDIX A

Coastal Pathway Master Plan Maps

DRAFT B July 2016



COASTAL PATHWAY MASTER PLAN MAPS Appendix A

DRAFT B – 2016

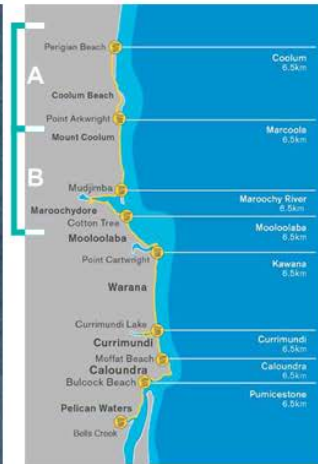
A - NORTHERN SECTION



B - NORTHERN SECTION



KEY



← Click a map number to view selected map at Scale 1:2000 @ A3



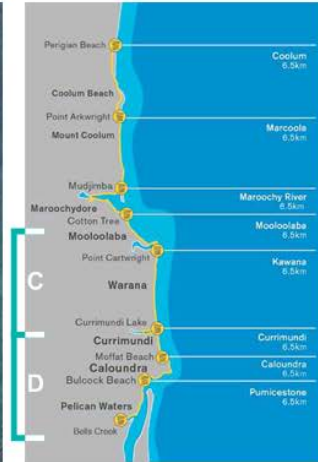
C - SOUTHERN SECTION



D - SOUTHERN SECTION



KEY



← Click a map number to view selected map at Scale 1:2000 @ A3



Map 1 - A



Map 1 - B



Key Plan

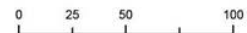
Coastal Pathway Category

- Completed
- 2.4 - 2.9m, Low Priority
- Less than 2.4m, High Priority
- Less than 2.4m, Medium Priority
- Less than 2.4m, Low Priority
- Temporary Link

Missing Links Priority

- High
- Low
- Long Term Planning Option
- Property Boundaries
- Geotagged Photos

- Connection to Noosa
- Refuge Island
- Unmarked road crossing
- Connection to Coolum High School and Peregrin Springs

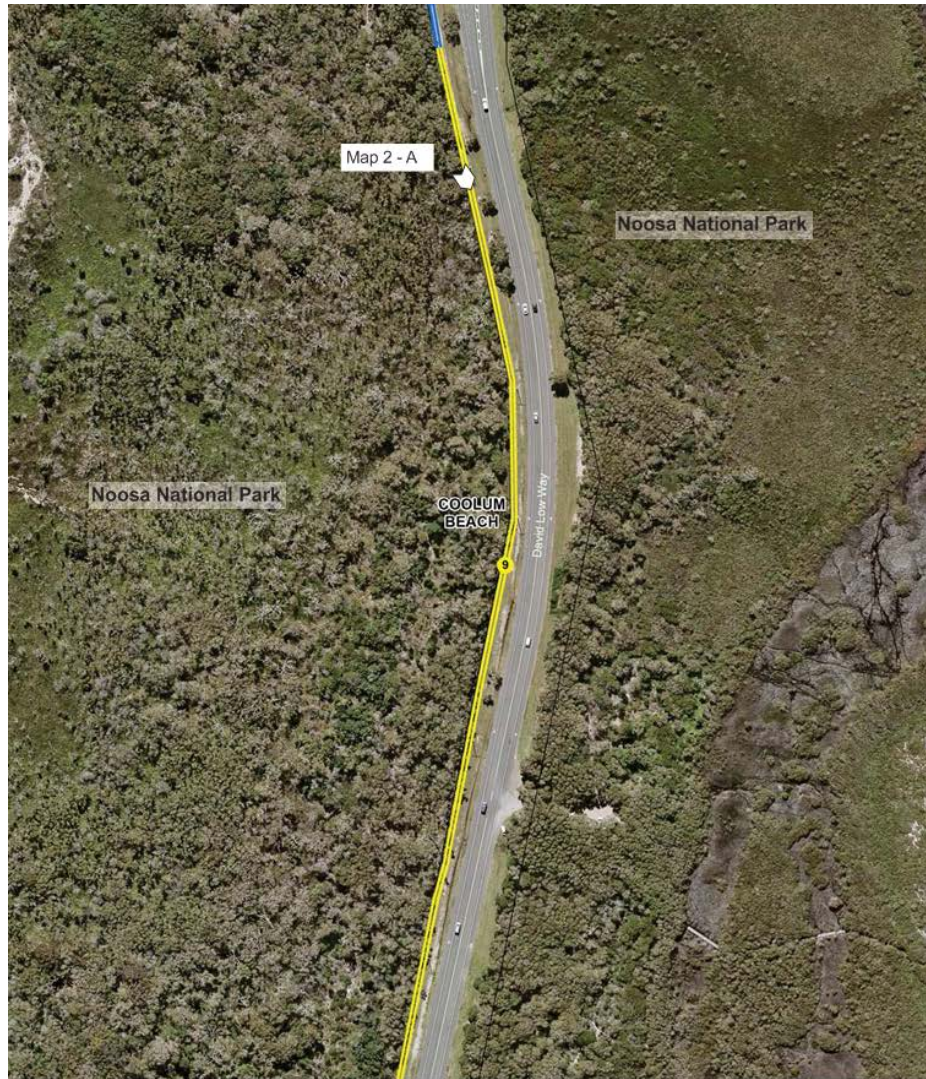


COASTAL PATHWAY MASTER PLAN Appendix A

Scale 1: 2000 @ A3
 0 20 40 60 80 100m

DRAFT B
 2016

Map 1



Map 2 - A



Key Plan

Coastal Pathway Category

- Completed
- 2.4 - 2.9m, Low Priority
- Less than 2.4m, High Priority
- Less than 2.4m, Medium Priority
- Less than 2.4m, Low Priority
- - - Temporary Link

Missing Links Priority

- - - High
- - - Low
- - - Long Term Planning Option
- Property Boundaries
- Geotagged Photos

0 25 50 100 m



COASTAL PATHWAY MASTER PLAN Appendix A

Scale 1: 2000 @ A3
 0 20 40 60 80 100m

DRAFT B
 2016

Map 2



Map 3 - A



Key Plan

Coastal Pathway Category

- Completed
- 2.4 - 2.9m, Low Priority
- Less than 2.4m, High Priority
- Less than 2.4m, Medium Priority
- Less than 2.4m, Low Priority
- Temporary Link

Missing Links Priority

- High
- Low
- Long Term Planning Option
- Property Boundaries
- Geotagged Photos

0 25 50 100 m



Key Plan

Coastal Pathway Category

- Completed
- 2.4 - 2.9m, Low Priority
- Less than 2.4m, High Priority
- Less than 2.4m, Medium Priority
- Less than 2.4m, Low Priority
- - - Temporary Link

Missing Links Priority

- - - High
- - - Low
- - - Long Term Planning Option
- Property Boundaries
- Geotagged Photos

0 25 50 100 m



COASTAL PATHWAY MASTER PLAN Appendix A

Scale 1: 2000 @ A3
 0 20 40 60 80 100m

DRAFT B
 2016

Map 4



Map 5 - A



Map 5 - B



Map 5 - C



Key Plan

Coastal Pathway Category

- Completed
- 2.4 - 2.9m, Low Priority
- Less than 2.4m, High Priority
- Less than 2.4m, Medium Priority
- Less than 2.4m, Low Priority
- - - Temporary Link

Missing Links Priority

- - - High
- - - Low
- - - Long Term Planning Option
- Property Boundaries
- Geotagged Photos



Map 6 - A



Map 6 - B



Map 6 - C



Key Plan

Coastal Pathway Category

- Completed
- 2.4 - 2.9m, Low Priority
- Less than 2.4m, High Priority
- Less than 2.4m, Medium Priority
- Less than 2.4m, Low Priority
- Temporary Link

Missing Links Priority

- High
- Low
- Long Term Planning Option
- Property Boundaries
- Geotagged Photos

0 25 50 100 m



Map 7 - A



Map 7 - B



Map 7 - C



Key Plan

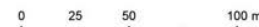
Coastal Pathway Category

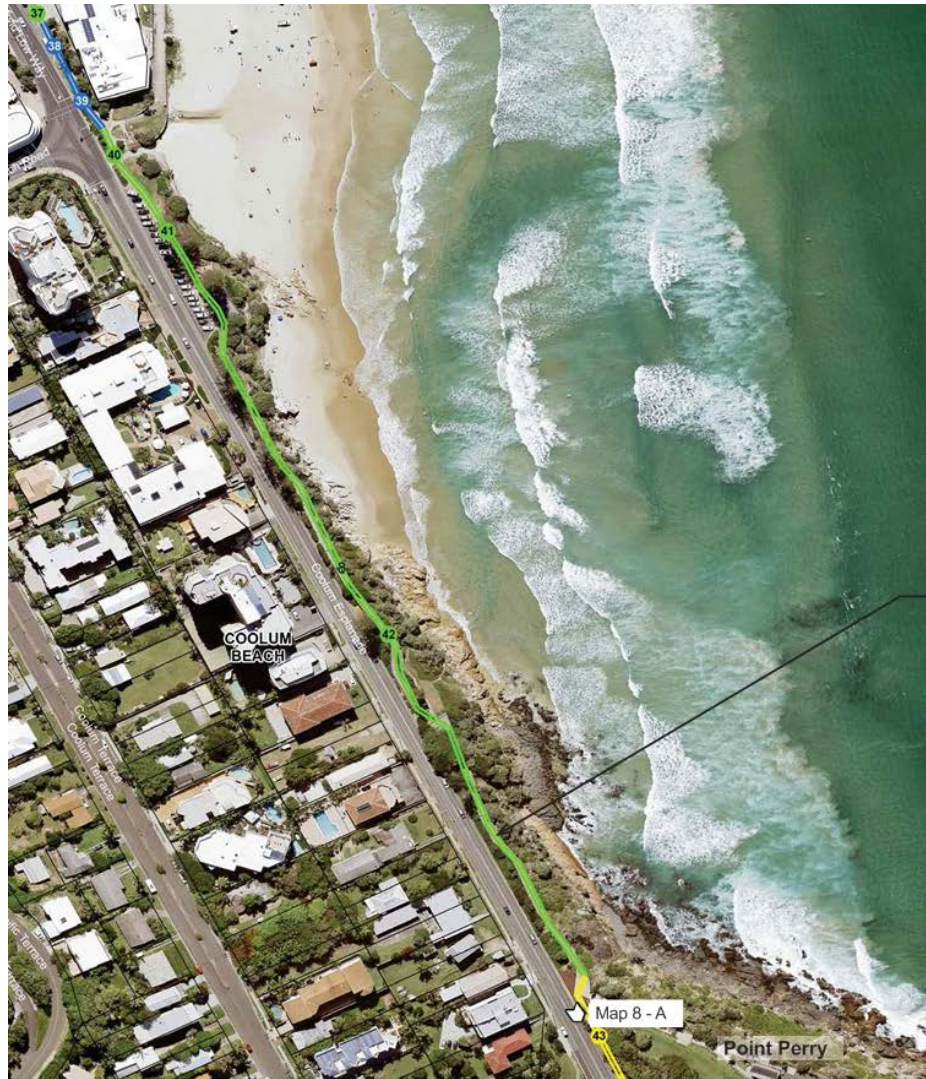
- Completed
- 2.4 - 2.9m, Low Priority
- Less than 2.4m, High Priority
- Less than 2.4m, Medium Priority
- Less than 2.4m, Low Priority
- Temporary Link

Missing Links Priority

- High
- Low
- Long Term Planning Option

- Property Boundaries
- Geotagged Photos





Map 8 - A



Map 8 - B

Coolum Boardwalk



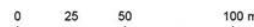
Key Plan

Coastal Pathway Category

- Completed
- 2.4 - 2.9m, Low Priority
- Less than 2.4m, High Priority
- Less than 2.4m, Medium Priority
- Less than 2.4m, Low Priority
- - - Temporary Link

Missing Links Priority

- - - High
- - - Low
- - - Long Term Planning Option
- Property Boundaries
- Geotagged Photos





Map 9 - A



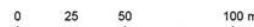
Key Plan

Coastal Pathway Category

- Completed
- 2.4 - 2.9m, Low Priority
- Less than 2.4m, High Priority
- Less than 2.4m, Medium Priority
- Less than 2.4m, Low Priority
- - - Temporary Link

Missing Links Priority

- - - High
- - - Low
- - - Long Term Planning Option
- Property Boundaries
- Geotagged Photos



COASTAL PATHWAY MASTER PLAN Appendix A



DRAFT B
2016

Map 9



Map 10 - A



Map 10 - B

Proposed shared pathway, indicative alignment, subject to detailed investigation

Proposed pedestrian path linking existing outlooks

Proposed cycleway along Jubilee Esplanade

0 25 50 100 m



Key Plan

Coastal Pathway Category

- Completed
- 2.4 - 2.9m, Low Priority
- Less than 2.4m, High Priority
- Less than 2.4m, Medium Priority
- Less than 2.4m, Low Priority
- - - Temporary Link

Missing Links Priority

- - - High
- - - Low
- - - Long Term Planning Option
- Property Boundaries
- Geotagged Photos



Map 11 - A



Map 11 - B



Map 11 - C

Indicative pathway alignment - final location will be subject to detailed site investigation



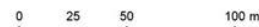
Key Plan

Coastal Pathway Category

- Completed
- 2.4 - 2.9m, Low Priority
- Less than 2.4m, High Priority
- Less than 2.4m, Medium Priority
- Less than 2.4m, Low Priority
- - - Temporary Link

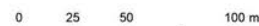
Missing Links Priority

- - - High
- - - Low
- - - Long Term Planning Option
- Property Boundaries
- Geotagged Photos





Indicative pathway alignment -
 subject to detailed site investigation



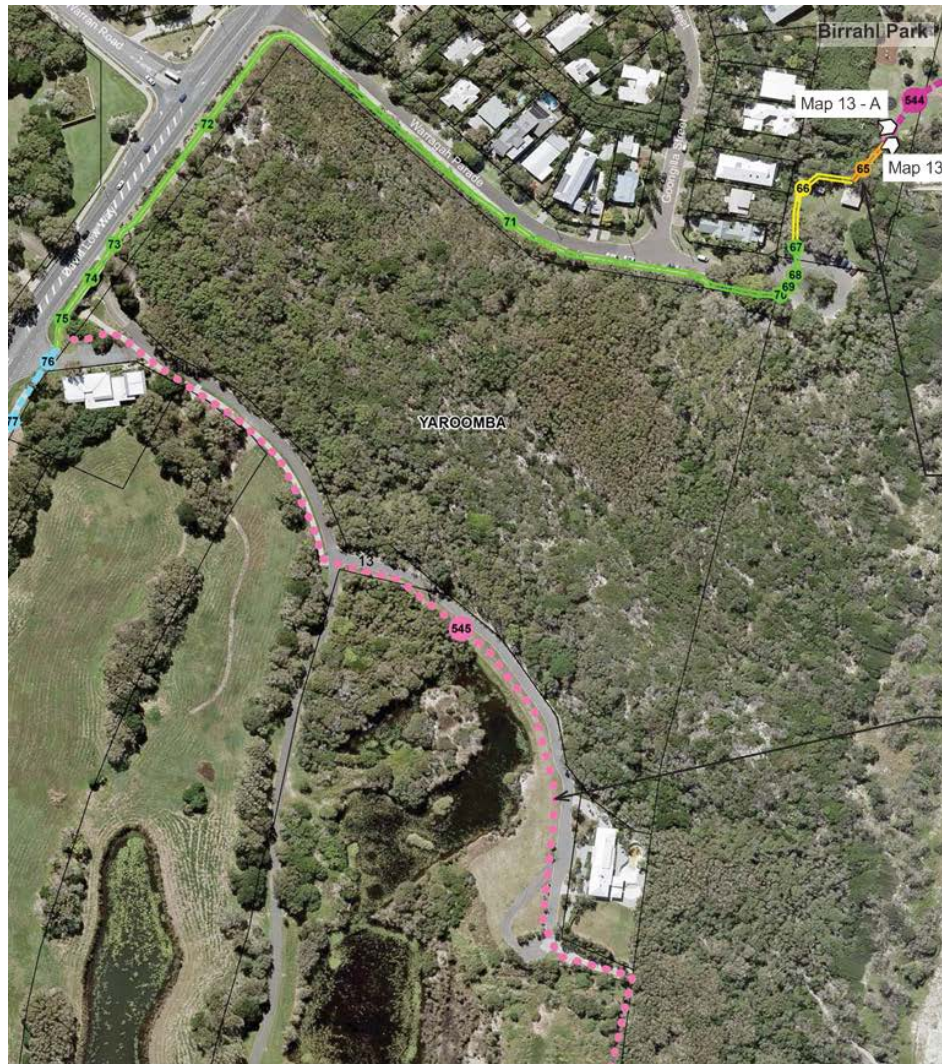
Key Plan

Coastal Pathway Category

- Completed
- 2.4 - 2.9m, Low Priority
- Less than 2.4m, High Priority
- Less than 2.4m, Medium Priority
- Less than 2.4m, Low Priority
- Temporary Link

Missing Links Priority

- High
- Low
- Long Term Planning Option
- Property Boundaries
- Geotagged Photos



Existing narrow bridge to be upgraded

Indicative pathway alignment - subject to development approval process



Key Plan

Coastal Pathway Category

- Completed
- 2.4 - 2.9m, Low Priority
- Less than 2.4m, High Priority
- Less than 2.4m, Medium Priority
- Less than 2.4m, Low Priority
- - - Temporary Link

Missing Links Priority

- - - High
- - - Low
- - - Long Term Planning Option

- Property Boundaries
- Geotagged Photos



COASTAL PATHWAY MASTER PLAN Appendix A

Scale 1: 2000 @ A3
 0 20 40 60 80 100m

DRAFT B
 2016

Map 13



Indicative pathway alignment -
 subject to development approval
 process



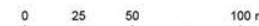
Key Plan

Coastal Pathway Category

- Completed
- 2.4 - 2.9m, Low Priority
- Less than 2.4m, High Priority
- Less than 2.4m, Medium Priority
- Less than 2.4m, Low Priority
- Temporary Link

Missing Links Priority

- High
- Low
- Long Term Planning Option
- Property Boundaries
- Geotagged Photos





Map 15 - A



Map 15 - B



Map 15 - C

Indicative pathway alignment -
 subject to future investigation



Key Plan

Coastal Pathway Category

- Completed
- 2.4 - 2.9m, Low Priority
- Less than 2.4m, High Priority
- Less than 2.4m, Medium Priority
- Less than 2.4m, Low Priority
- Temporary Link

Missing Links Priority

- High
- Low
- Long Term Planning Option

- Property Boundaries
- Geotagged Photos



Map 16 - A



Key Plan

Coastal Pathway Category

- Completed
- 2.4 - 2.9m, Low Priority
- Less than 2.4m, High Priority
- Less than 2.4m, Medium Priority
- Less than 2.4m, Low Priority
- Temporary Link

Missing Links Priority

- High
- Low
- Long Term Planning Option
- Property Boundaries
- Geotagged Photos

0 25 50 100 m



COASTAL PATHWAY MASTER PLAN Appendix A

Scale 1: 2000 @ A3
 0 20 40 60 80 100m

DRAFT B
 2016

Map 16



Map 17 - A



Key Plan

Coastal Pathway Category

- Completed
- 2.4 - 2.9m, Low Priority
- Less than 2.4m, High Priority
- Less than 2.4m, Medium Priority
- Less than 2.4m, Low Priority
- Temporary Link

Missing Links Priority

- High
- Low
- Long Term Planning Option
- Property Boundaries
- Geotagged Photos

0 25 50 100 m

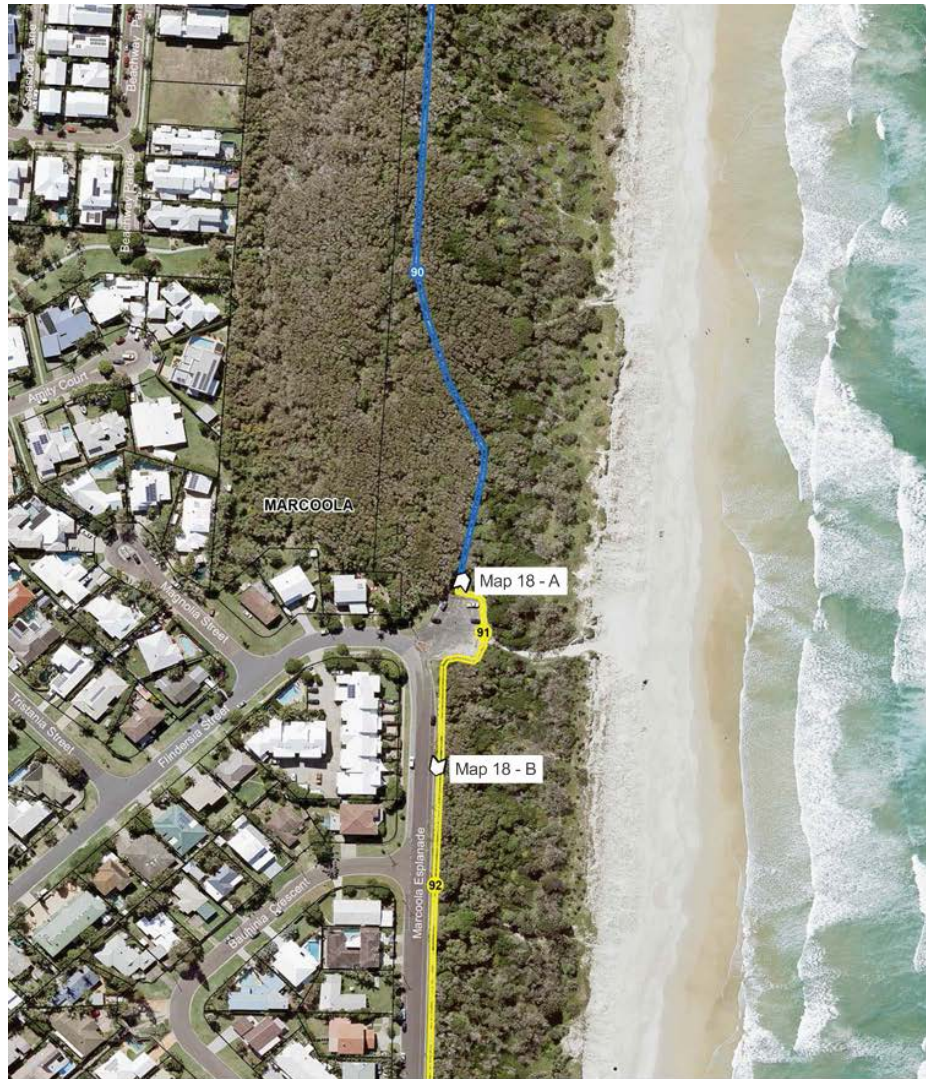


COASTAL PATHWAY MASTER PLAN Appendix A

Scale 1: 2000 @ A3
 0 20 40 60 80 100m

DRAFT B
 2016

Map 17



Map 18 - A



Map 18 - B



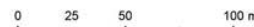
Key Plan

Coastal Pathway Category

- Completed
- 2.4 - 2.9m, Low Priority
- Less than 2.4m, High Priority
- Less than 2.4m, Medium Priority
- Less than 2.4m, Low Priority
- Temporary Link

Missing Links Priority

- High
- Low
- Long Term Planning Option
- Property Boundaries
- Geotagged Photos

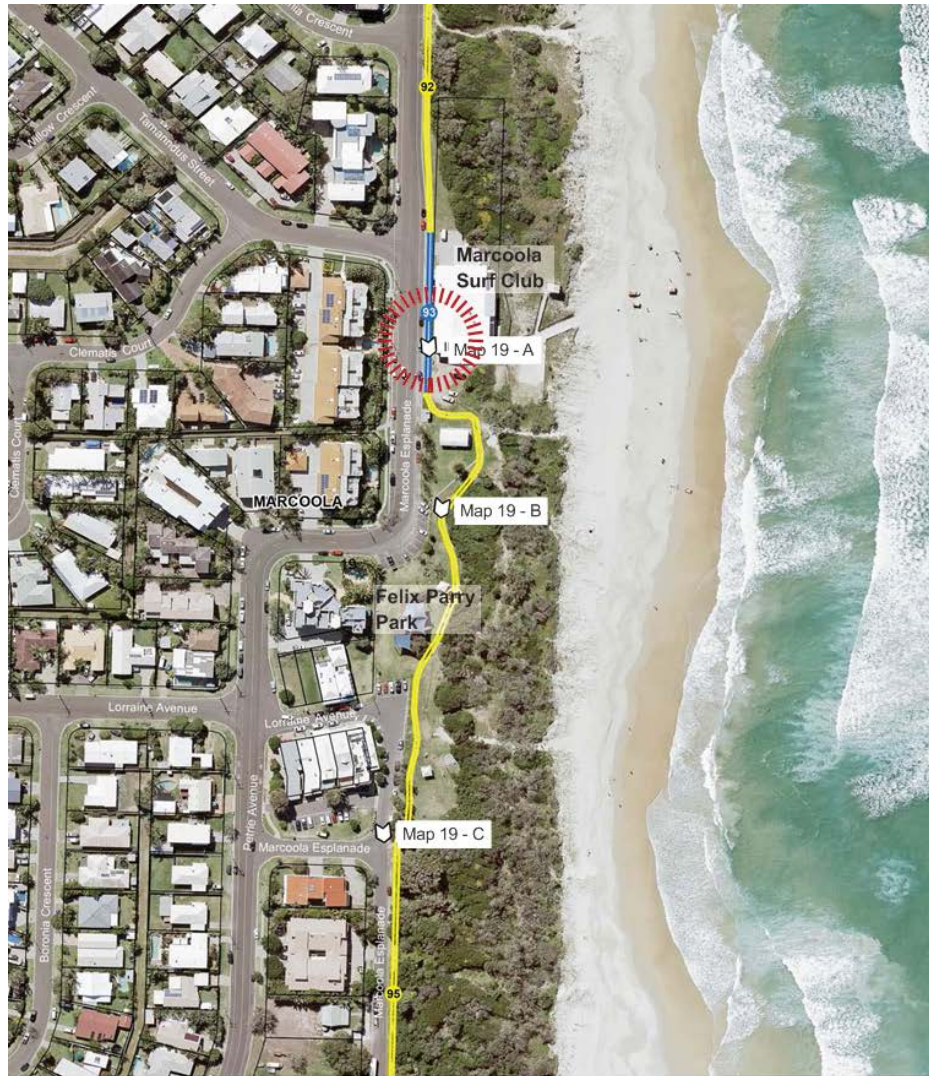


COASTAL PATHWAY MASTER PLAN Appendix A

Scale 1: 2000 @ A3
 0 20 40 60 80 100m

DRAFT B
 2016

Map 18



Map 19 - A



Map 19 - B



Map 19 - C



Key Plan

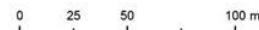
Coastal Pathway Category

- Completed
- 2.4 - 2.9m, Low Priority
- Less than 2.4m, High Priority
- Less than 2.4m, Medium Priority
- Less than 2.4m, Low Priority
- - - Temporary Link

Missing Links Priority

- - - High
- - - Low
- - - Long Term Planning Option
- Property Boundaries
- 📍 Geotagged Photos

Conflict points





Map 20 - A



Map 20 - B



Map 20 - C



Key Plan

Coastal Pathway Category

- Completed
- 2.4 - 2.9m, Low Priority
- Less than 2.4m, High Priority
- Less than 2.4m, Medium Priority
- Less than 2.4m, Low Priority
- - - Temporary Link

Missing Links Priority

- - - High
- - - Low
- - - Long Term Planning Option
- Property Boundaries
- Geotagged Photos

0 25 50 100 m

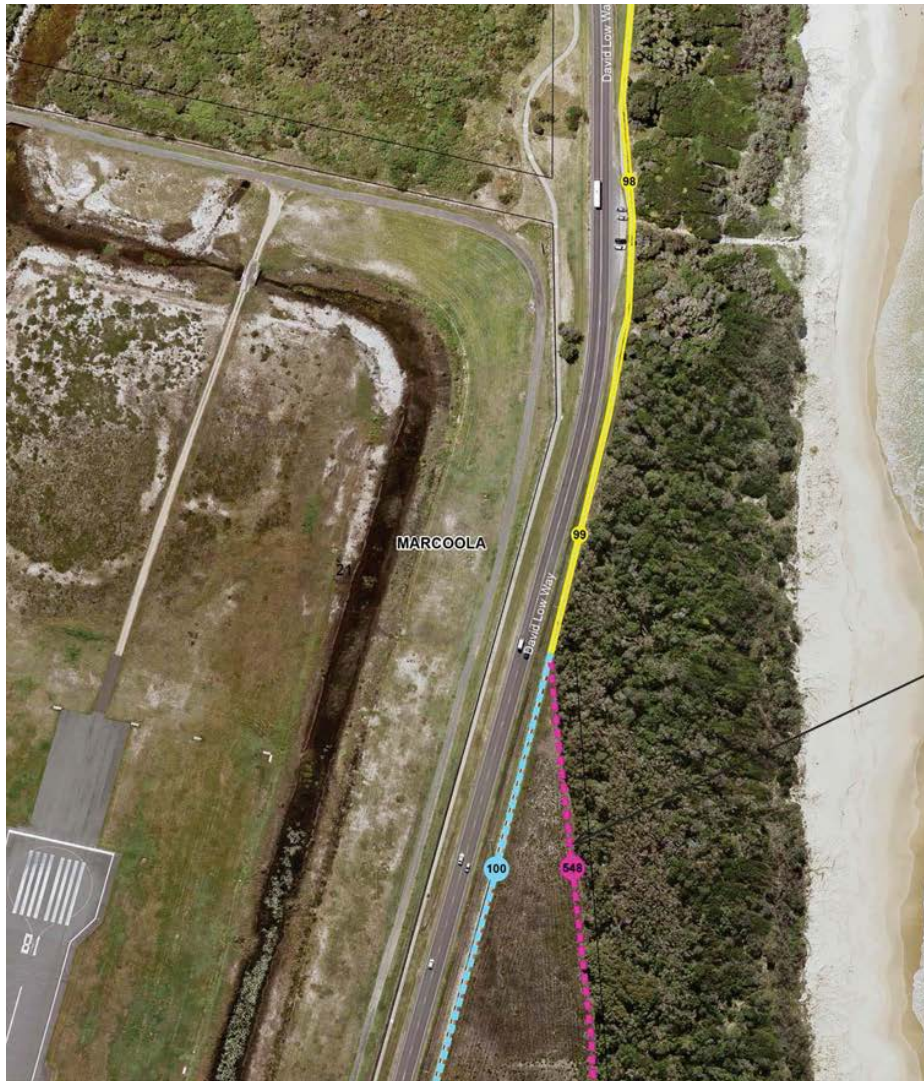


COASTAL PATHWAY MASTER PLAN Appendix A

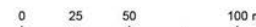
Scale 1: 2000 @ A3
 0 20 40 60 80 100m

DRAFT B
 2016

Map 20



Indicative pathway alignment -
 subject to development approval
 process



Key Plan

Coastal Pathway Category

- Completed
- 2.4 - 2.9m, Low Priority
- Less than 2.4m, High Priority
- Less than 2.4m, Medium Priority
- Less than 2.4m, Low Priority
- - - Temporary Link

Missing Links Priority

- - - High
- - - Low
- - - Long Term Planning Option
- Property Boundaries
- Geotagged Photos



COASTAL PATHWAY MASTER PLAN Appendix A

Scale 1: 2000 @ A3
 0 20 40 60 80 100m

DRAFT B
 2016

Map 21



Map 22 - A



Map 22 - B



Map 22 - C

Indicative pathway alignment -
 subject to development approval
 process



Key Plan

Coastal Pathway Category

- Completed
- 2.4 - 2.9m, Low Priority
- Less than 2.4m, High Priority
- Less than 2.4m, Medium Priority
- Less than 2.4m, Low Priority
- - - Temporary Link

Missing Links Priority

- - - High
- - - Low
- - - Long Term Planning Option
- Property Boundaries
- Geotagged Photos



Map 23 - A



Map 23 - B



Map 23 - C



Key Plan

Coastal Pathway Category

- Completed
- 2.4 - 2.9m, Low Priority
- Less than 2.4m, High Priority
- Less than 2.4m, Medium Priority
- Less than 2.4m, Low Priority
- - - Temporary Link

Missing Links Priority

- - - High
- - - Low
- - - Long Term Planning Option
- Property Boundaries
- Geotagged Photos



COASTAL PATHWAY MASTER PLAN Appendix A

Scale 1: 2000 @ A3
 0 20 40 60 80 100m

DRAFT B
 2016

Map 23



Map 24 - A



Map 24 - B



Map 24 - C



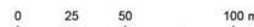
Key Plan

Coastal Pathway Category

- Completed
- 2.4 - 2.9m, Low Priority
- Less than 2.4m, High Priority
- Less than 2.4m, Medium Priority
- Less than 2.4m, Low Priority
- - - Temporary Link

Missing Links Priority

- - - High
- - - Low
- - - Long Term Planning Option
- Property Boundaries
- Geotagged Photos

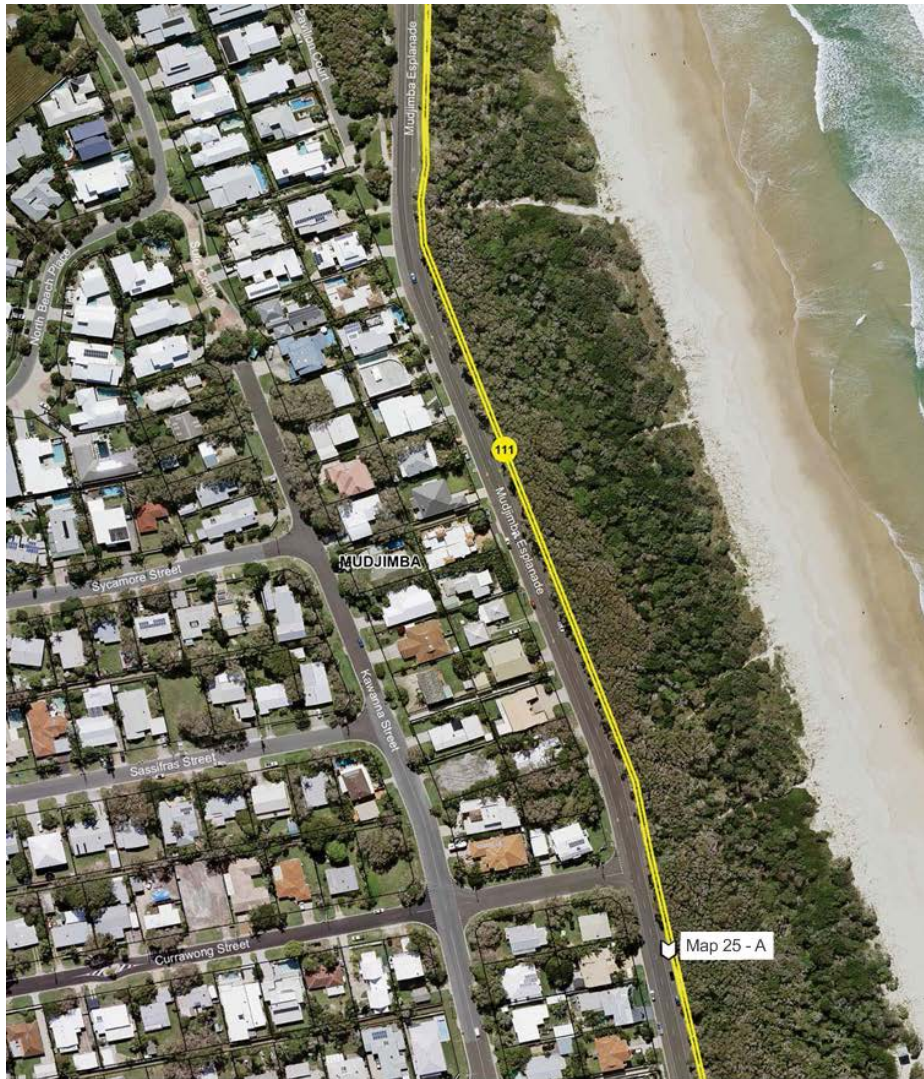


COASTAL PATHWAY MASTER PLAN Appendix A

Scale 1: 2000 @ A3
 0 20 40 60 80 100m

DRAFT B
 2016

Map 24



Map 25 - A



Key Plan

Coastal Pathway Category

- Completed
- 2.4 - 2.9m, Low Priority
- Less than 2.4m, High Priority
- Less than 2.4m, Medium Priority
- Less than 2.4m, Low Priority
- - - Temporary Link

Missing Links Priority

- - - High
- - - Low
- - - Long Term Planning Option
- Property Boundaries
- Geotagged Photos

0 25 50 100 m

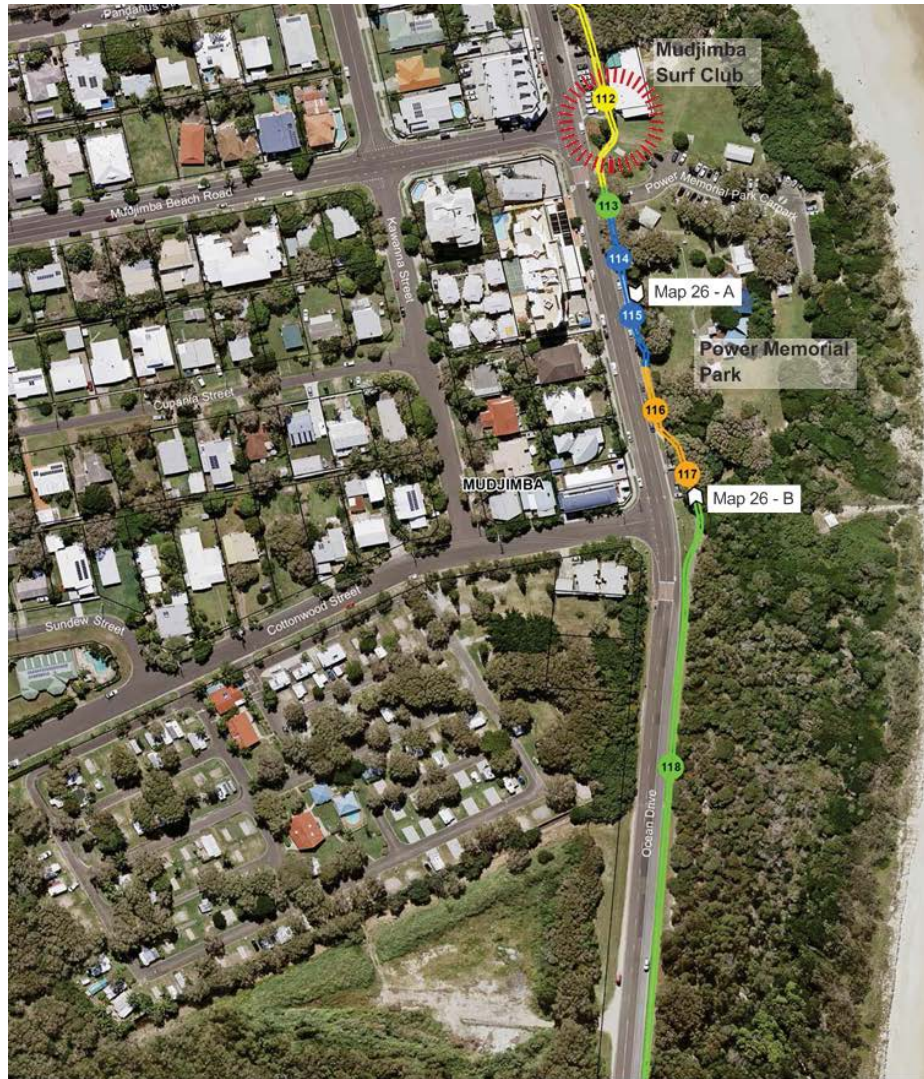


COASTAL PATHWAY MASTER PLAN Appendix A

Scale 1: 2000 @ A3
 0 20 40 60 80 100m

DRAFT B
 2016

Map 25



Map 26 - A



Map 26 - B



Key Plan

Coastal Pathway Category

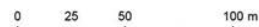
- Completed
- 2.4 - 2.9m, Low Priority
- Less than 2.4m, High Priority
- Less than 2.4m, Medium Priority
- Less than 2.4m, Low Priority
- - - Temporary Link

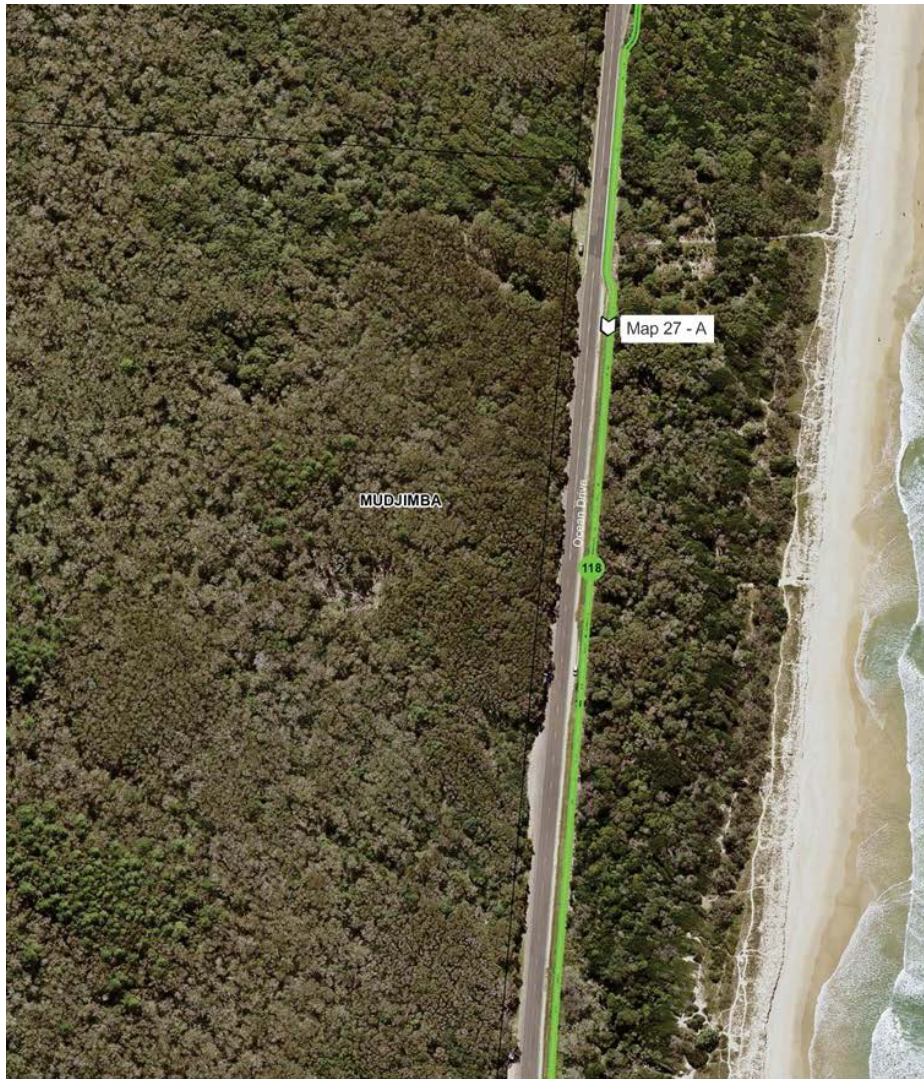
Missing Links Priority

- - - High
- - - Low
- - - Long Term Planning Option

- Property Boundaries
- Geotagged Photos

Conflict points





Map 27 - A



Key Plan

Coastal Pathway Category

- Completed
- 2.4 - 2.9m, Low Priority
- Less than 2.4m, High Priority
- Less than 2.4m, Medium Priority
- Less than 2.4m, Low Priority
- - - Temporary Link

Missing Links Priority

- - - High
- - - Low
- - - Long Term Planning Option
- Property Boundaries
- Geotagged Photos

0 25 50 100 m

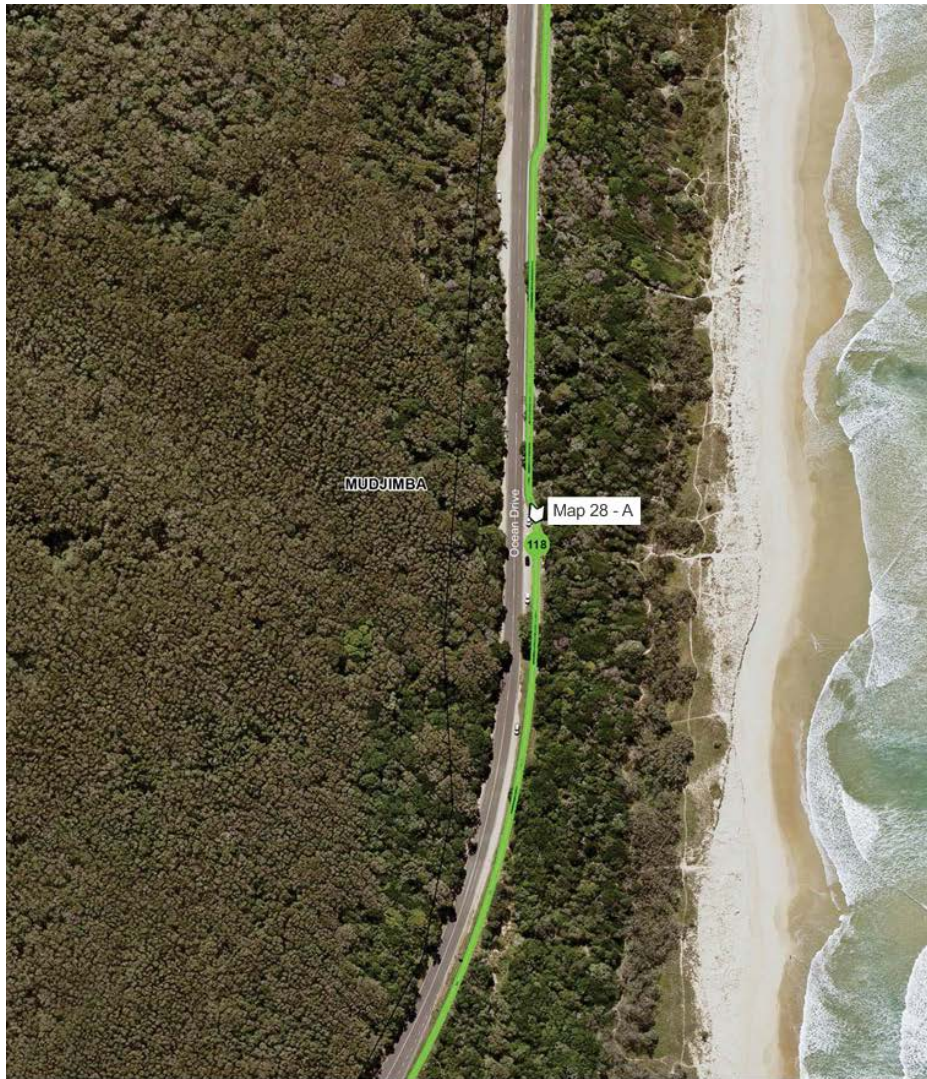


COASTAL PATHWAY MASTER PLAN Appendix A

Scale 1: 2000 @ A3
 0 20 40 60 80 100m

DRAFT B
 2016

Map 27



Map 28 - A



Key Plan

Coastal Pathway Category

- Completed
- 2.4 - 2.9m, Low Priority
- Less than 2.4m, High Priority
- Less than 2.4m, Medium Priority
- Less than 2.4m, Low Priority
- - - Temporary Link

Missing Links Priority

- - - High
- - - Low
- - - Long Term Planning Option
- Property Boundaries
- Geotagged Photos

0 25 50 100 m

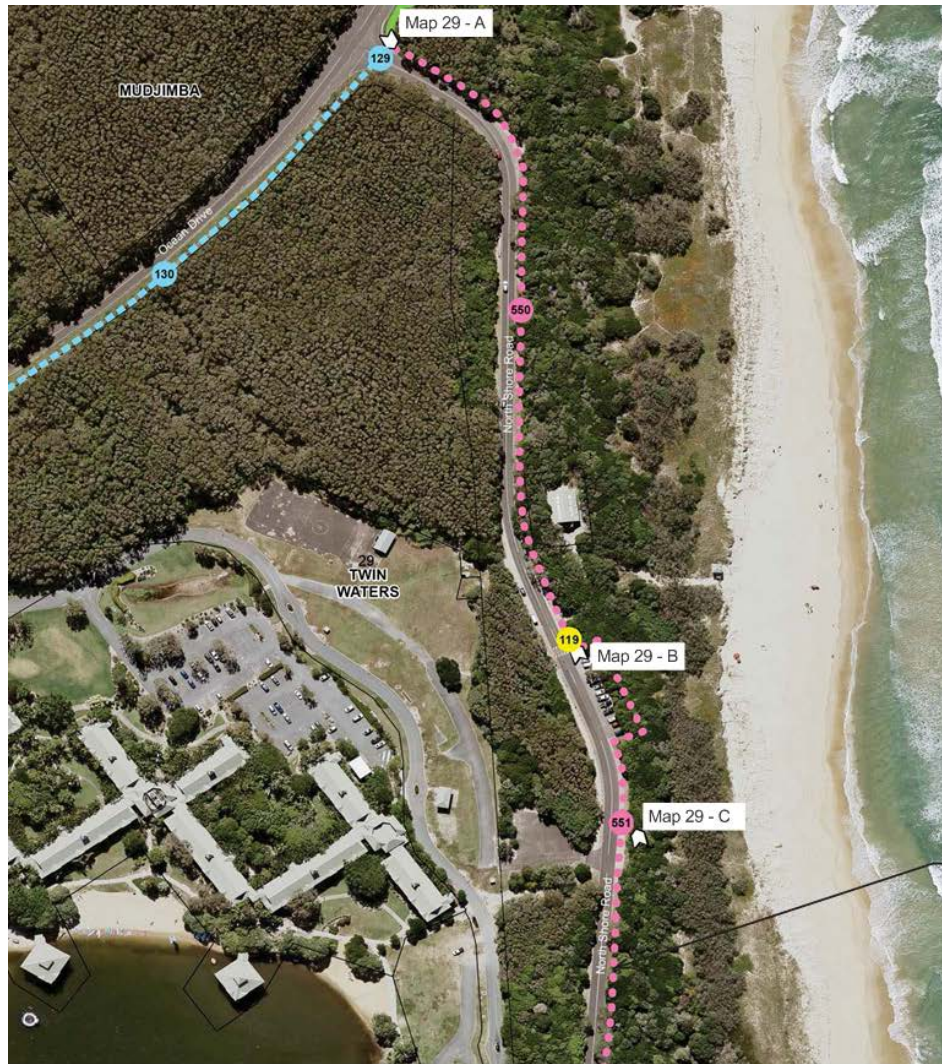


COASTAL PATHWAY MASTER PLAN Appendix A

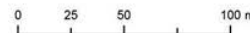
Scale 1: 2000 @ A3
 0 20 40 60 80 100m

DRAFT B
 2016

Map 28



Indicative pathway alignment -
 subject to future investigation





Map 30 - A

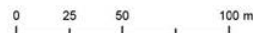


Map 30 - B



Map 30 - C

Indicative pathway alignment -
 subject to future investigation



Key Plan

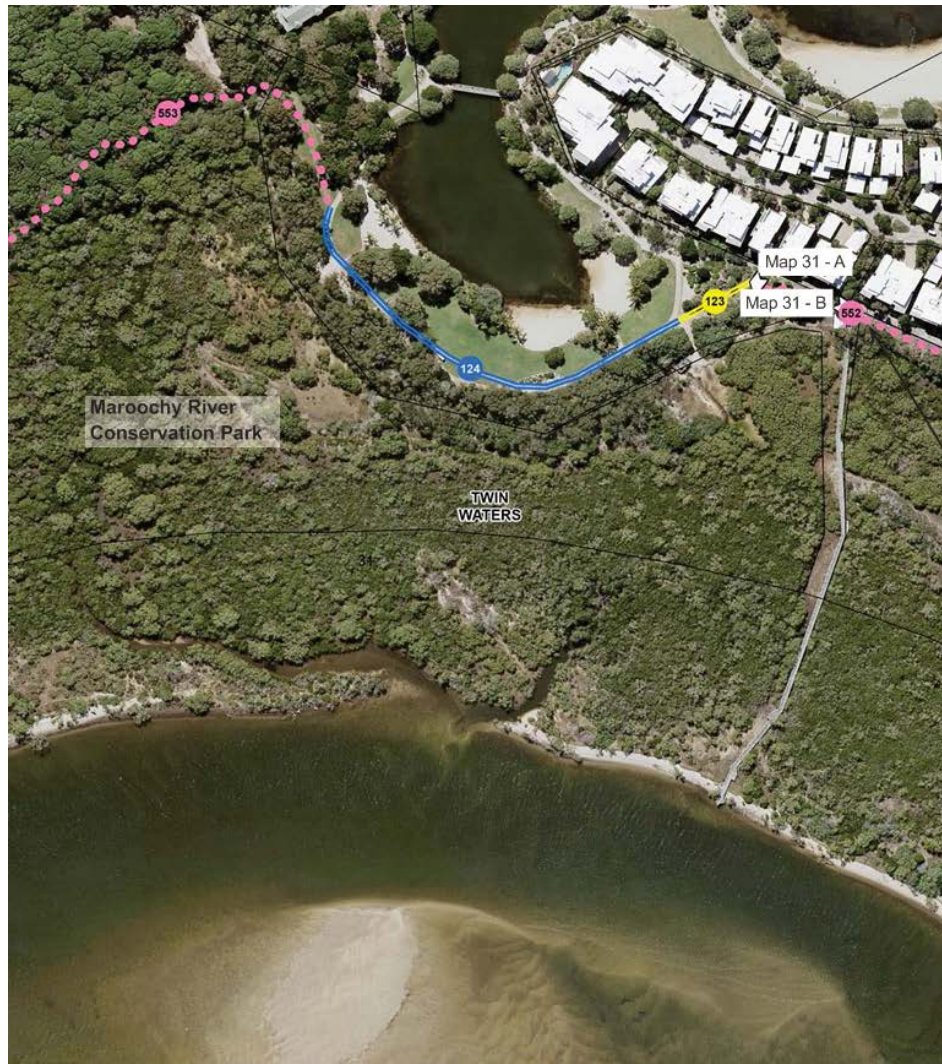
Coastal Pathway Category

- Completed
- 2.4 - 2.9m, Low Priority
- Less than 2.4m, High Priority
- Less than 2.4m, Medium Priority
- Less than 2.4m, Low Priority
- - - Existing Link

Missing Links Priority

- - - High
- - - Low
- - - Long Term Planning Option

- Property Boundaries
- Geotagged Photos



Map 31 - A



Map 31 - B

Indicative pathway alignment -
 subject to future investigation



Key Plan

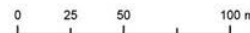
Coastal Pathway Category

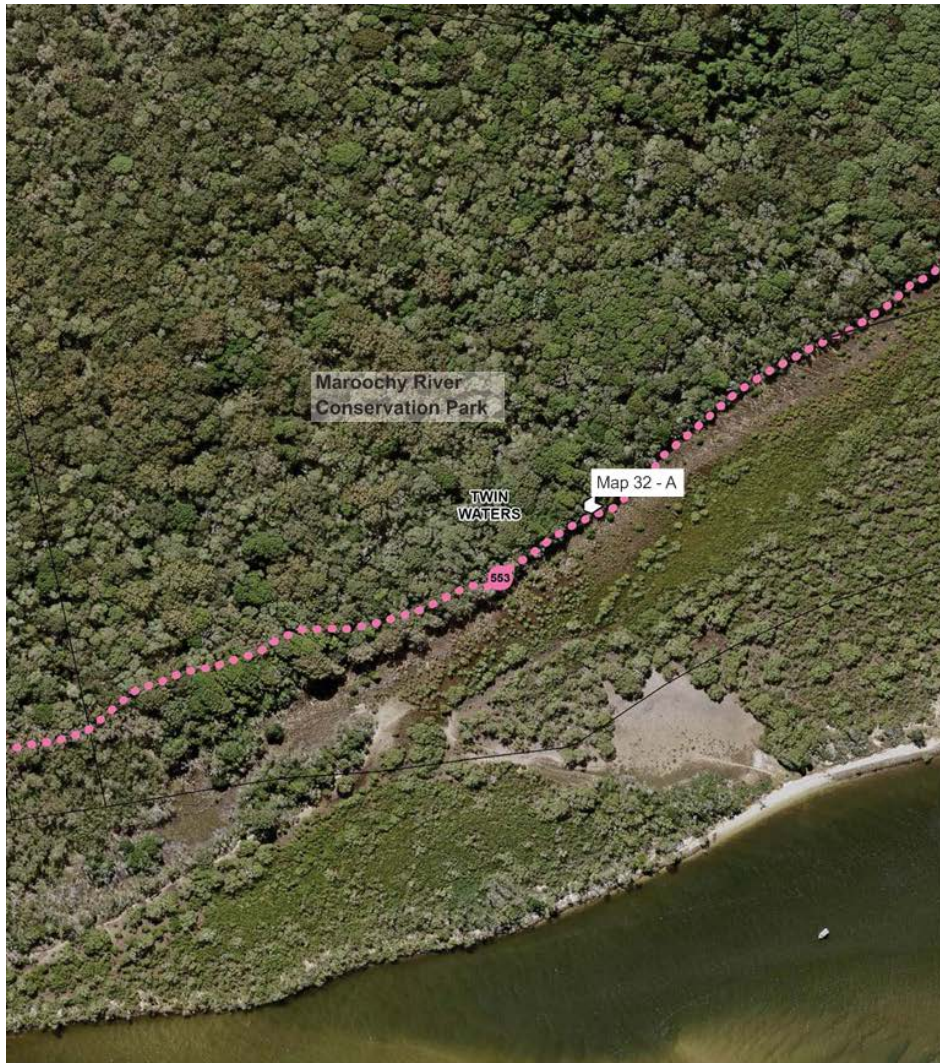
- Completed
- 2.4 - 2.9m, Low Priority
- Less than 2.4m, High Priority
- Less than 2.4m, Medium Priority
- Less than 2.4m, Low Priority
- Existing Link

Missing Links Priority

- High
- Low
- Long Term Planning Option

- Property Boundaries
- Geotagged Photos





Map 32 - A

Potential future pathway alignment
 - subject to agreement with State Government



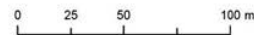
Key Plan

Coastal Pathway Category

- Completed
- 2.4 - 2.9m, Low Priority
- Less than 2.4m, High Priority
- Less than 2.4m, Medium Priority
- Less than 2.4m, Low Priority
- Existing Link

Missing Links Priority

- High
- Low
- Long Term Planning Option
- Property Boundaries
- Geotagged Photos

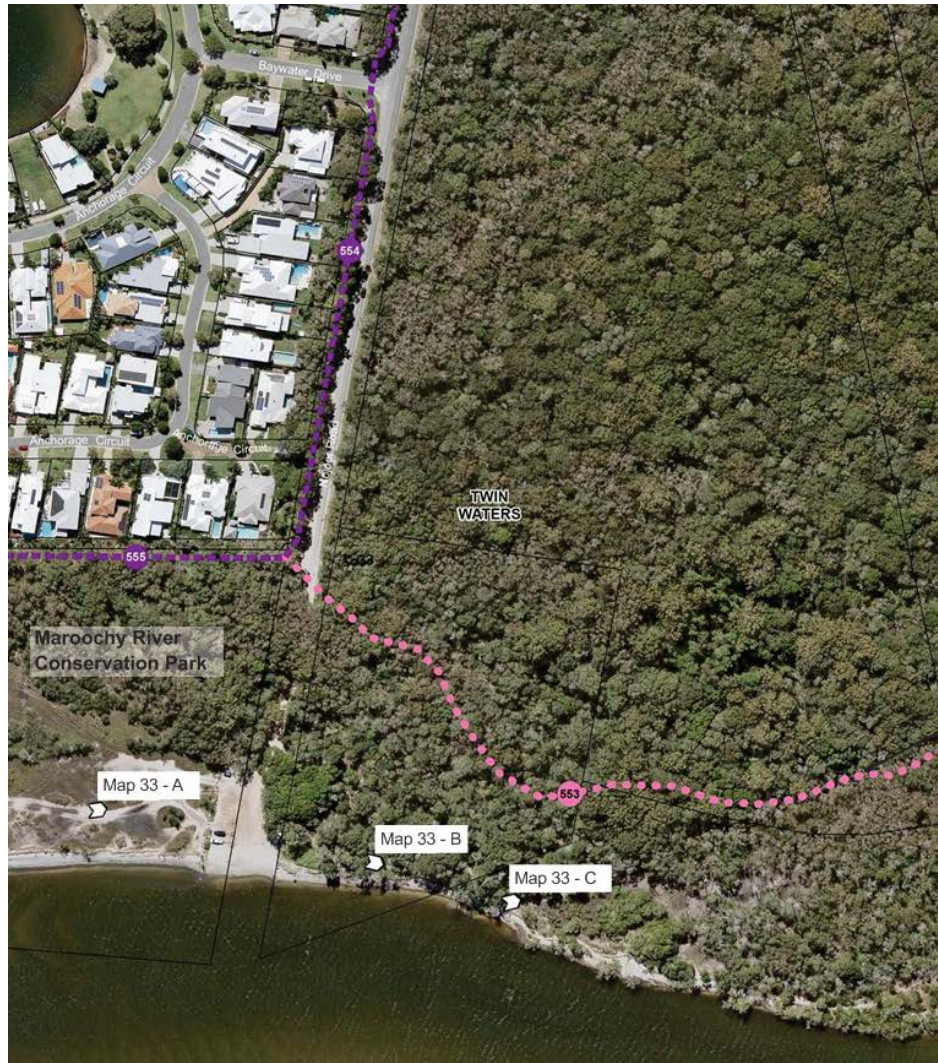


COASTAL PATHWAY MASTER PLAN Appendix A

Scale 1: 2000 @ A3
 0 20 40 60 80 100m

DRAFT B
 2016

Map 32



Map 33 - A

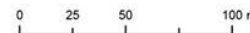


Map 33 - B



Map 33 - C

Potential future pathway alignment
 - subject to agreement with State
 Government



Key Plan

Coastal Pathway Category

- Completed
- 2.4 - 2.9m, Low Priority
- Less than 2.4m, High Priority
- Less than 2.4m, Medium Priority
- Less than 2.4m, Low Priority
- Existing Link

Missing Links Priority

- High
- Low
- Long Term Planning Option

Property Boundaries

Geotagged Photos



Key Plan

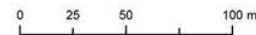
Coastal Pathway Category

- Completed
- 2.4 - 2.9m, Low Priority
- Less than 2.4m, High Priority
- Less than 2.4m, Medium Priority
- Less than 2.4m, Low Priority
- Existing Link

Missing Links Priority

- High
- Low
- Long Term Planning Option

- Property Boundaries
- Geotagged Photos





Map 35 - A



Map 35 - B



Map 35 - C



Key Plan

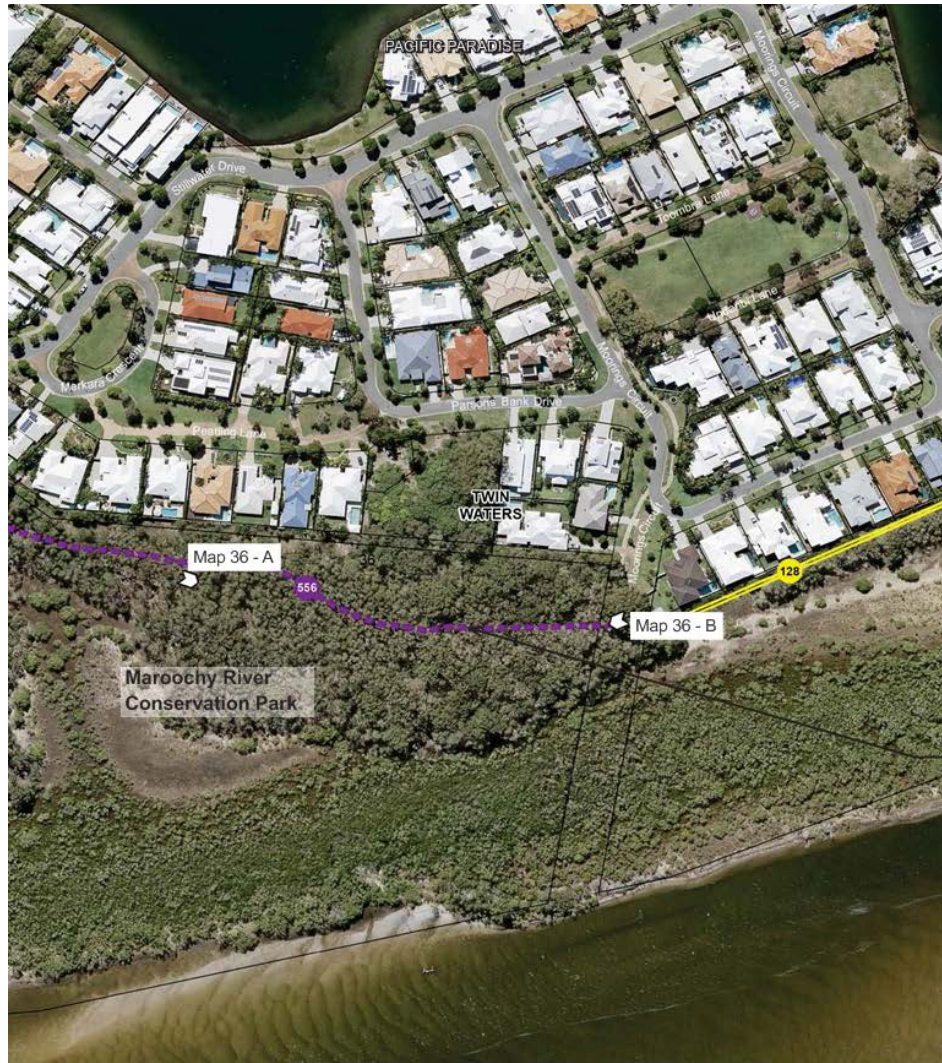
Coastal Pathway Category

- Completed
- 2.4 - 2.9m, Low Priority
- Less than 2.4m, High Priority
- Less than 2.4m, Medium Priority
- Less than 2.4m, Low Priority
- Existing Link

Missing Links Priority

- High
- Low
- Long Term Planning Option
- Property Boundaries
- Geotagged Photos





Map 36 - A



Map 36 - B



Key Plan

Coastal Pathway Category

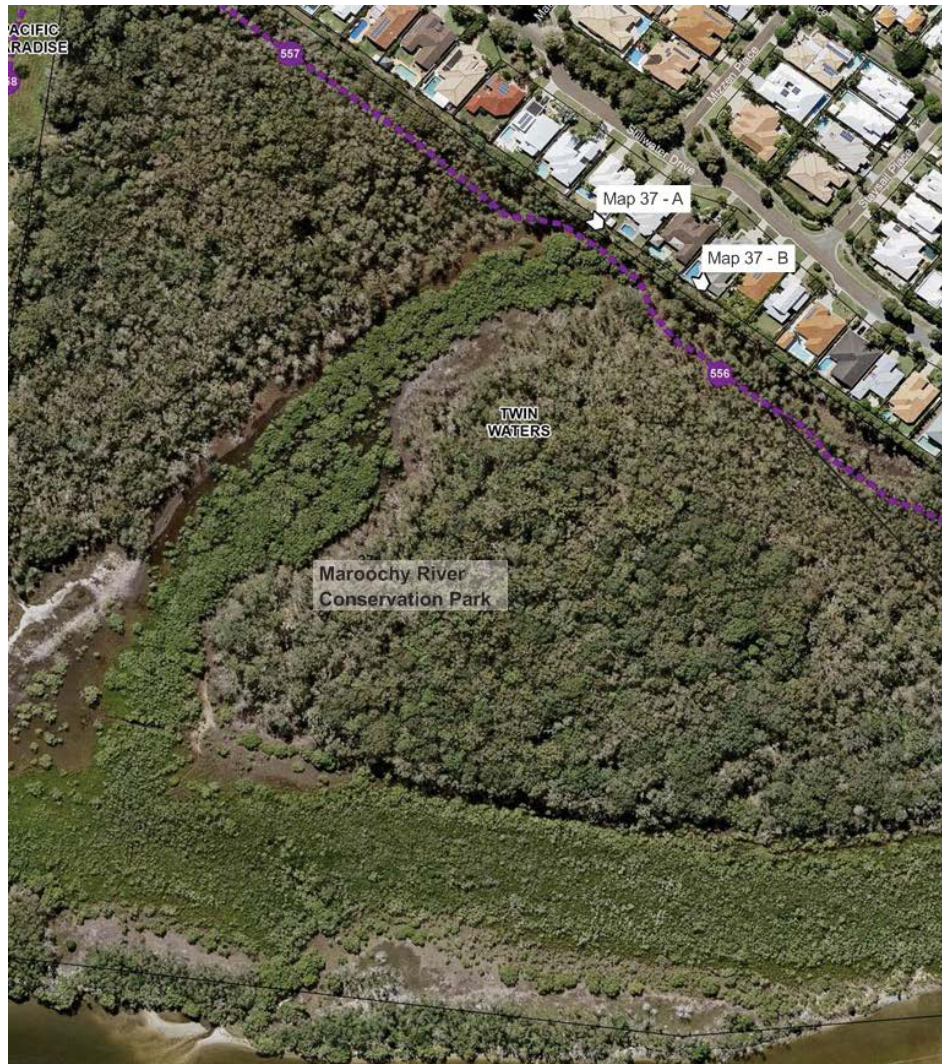
- Completed
- 2.4 - 2.9m, Low Priority
- Less than 2.4m, High Priority
- Less than 2.4m, Medium Priority
- Less than 2.4m, Low Priority
- Existing Link

Missing Links Priority

- High
- Low
- Long Term Planning Option

- Property Boundaries
- Geotagged Photos

Indicative pathway alignment -
 subject to future investigation



Indicative pathway alignment -
 subject to future investigation



Key Plan

Coastal Pathway Category

- Completed
- 2.4 - 2.9m, Low Priority
- Less than 2.4m, High Priority
- Less than 2.4m, Medium Priority
- Less than 2.4m, Low Priority

Existing Link

Missing Links Priority

- High
- Low
- Long Term Planning Option

Property Boundaries

Geotagged Photos



Map 38 - A



Map 38 - B

Indicative pathway alignment -
 subject to development approval
 process



Key Plan

Coastal Pathway Category

- Completed
- 2.4 - 2.9m, Low Priority
- Less than 2.4m, High Priority
- Less than 2.4m, Medium Priority
- Less than 2.4m, Low Priority
- Existing Link

Missing Links Priority

- High
- Low
- Long Term Planning Option

- Property Boundaries
- Geotagged Photos



Key Plan

Coastal Pathway Category

- Completed
- 2.4 - 2.9m, Low Priority
- Less than 2.4m, High Priority
- Less than 2.4m, Medium Priority
- Less than 2.4m, Low Priority
- - - Existing Link

Missing Links Priority

- - - High
- - - Low
- - - Long Term Planning Option
- Property Boundaries
- Geotagged Photos

0 25 50 100 m



Map 40 - A



Map 40 - B



Map 40 - C



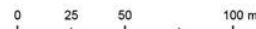
Key Plan

Coastal Pathway Category

- Completed
- 2.4 - 2.9m, Low Priority
- Less than 2.4m, High Priority
- Less than 2.4m, Medium Priority
- Less than 2.4m, Low Priority
- - - Temporary Link

Missing Links Priority

- - - High
- - - Low
- . . . Long Term Planning Option
- Property Boundaries
- Geotagged Photos





Map 41 - A








Map 41 - B



Key Plan

Coastal Pathway Category

-  Completed
-  2.4 - 2.9m, Low Priority
-  Less than 2.4m, High Priority
-  Less than 2.4m, Medium Priority
-  Less than 2.4m, Low Priority
-  Temporary Link

Missing Links Priority

-  High
-  Low
-  Long Term Planning Option
-  Property Boundaries
-  Geotagged Photos

0 25 50 100 m



COASTAL PATHWAY MASTER PLAN Appendix A

Scale 1: 2000 @ A3
 0 20 40 60 80 100m

DRAFT B
 2016

Map 41



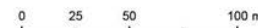
Key Plan

Coastal Pathway Category

- Completed
- 2.4 - 2.9m, Low Priority
- Less than 2.4m, High Priority
- Less than 2.4m, Medium Priority
- Less than 2.4m, Low Priority
- - - Temporary Link

Missing Links Priority

- - - High
- - - Low
- - - Long Term Planning Option
- Property Boundaries
- Geotagged Photos



COASTAL PATHWAY MASTER PLAN Appendix A

Scale 1: 2000 @ A3
 0 20 40 60 80 100m

DRAFT B
 2016

Map 42



Map 43 - A



Key Plan

Coastal Pathway Category

- Completed
- 2.4 - 2.9m, Low Priority
- Less than 2.4m, High Priority
- Less than 2.4m, Medium Priority
- Less than 2.4m, Low Priority
- - - Temporary Link

Missing Links Priority

- - - High
- - - Low
- - - Long Term Planning Option
- Property Boundaries
- Geotagged Photos

0 25 50 100 m



COASTAL PATHWAY MASTER PLAN Appendix A

Scale 1: 2000 @ A3
 0 20 40 60 80 100m

DRAFT B
 2016

Map 43



Map 44 - A



Map 44 - B



Map 44 - C



Key Plan

Coastal Pathway Category

- Completed
- 2.4 - 2.9m, Low Priority
- Less than 2.4m, High Priority
- Less than 2.4m, Medium Priority
- Less than 2.4m, Low Priority
- - - Temporary Link

Missing Links Priority

- - - High
- - - Low
- - - Long Term Planning Option
- Property Boundaries
- Geotagged Photos

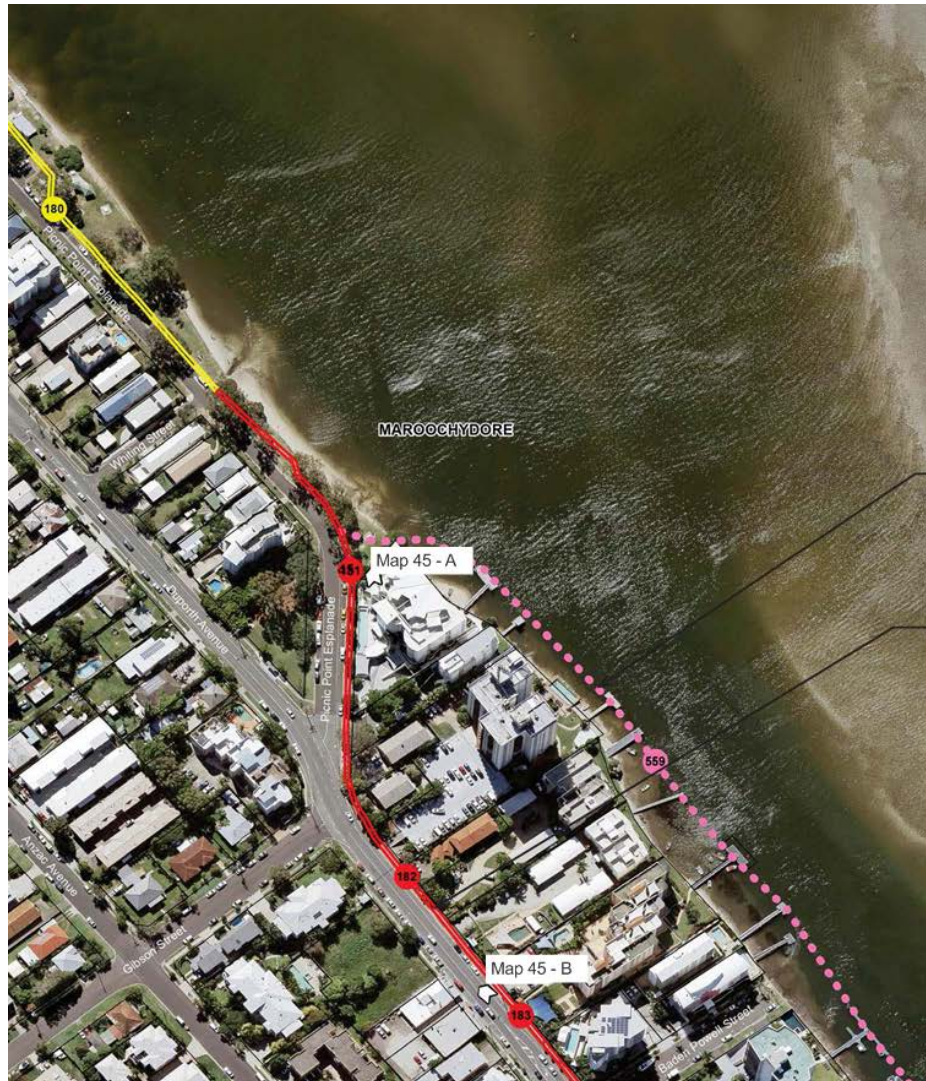


COASTAL PATHWAY MASTER PLAN Appendix A

Scale 1: 2000 @ A3
 0 20 40 60 80 100m

DRAFT B
 2016

Map 44



Map 45 - A



Map 45 - B

Long-term planning option as detailed in Maroochy North Shore Local Area Plan. Pathway alignment subject to future investigation.

Streetscape treatment required to reduce safety risks to Coastal Pathway users



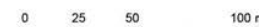
Key Plan

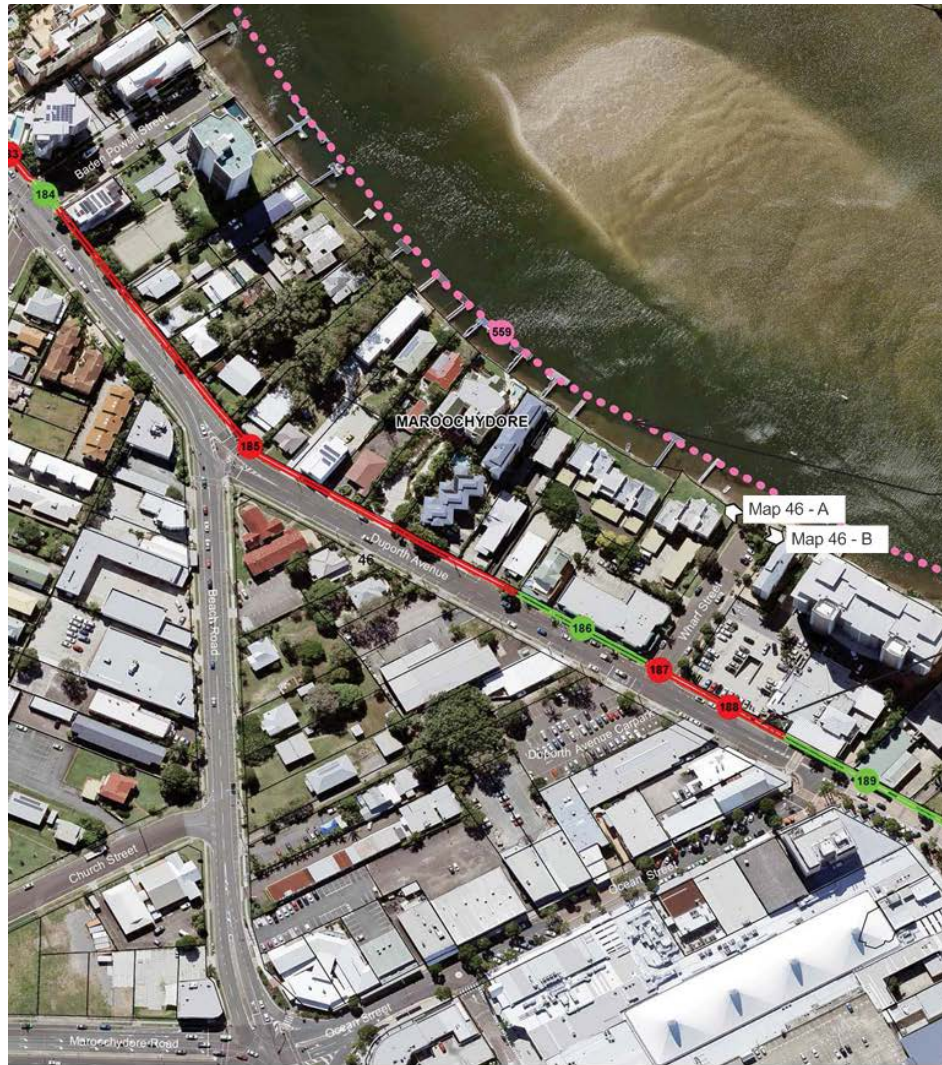
Coastal Pathway Category

- Completed
- 2.4 - 2.9m, Low Priority
- Less than 2.4m, High Priority
- Less than 2.4m, Medium Priority
- Less than 2.4m, Low Priority
- - - Temporary Link

Missing Links Priority

- - - High
- - - Low
- - - Long Term Planning Option
- Property Boundaries
- Geotagged Photos





Map 46 - A



Map 46 - B

Long-term planning option as detailed in Maroochy North Shore Local Area Plan. Pathway alignment subject to future investigation.

Streetscape treatment required to reduce safety risks to Coastal Pathway users



Key Plan

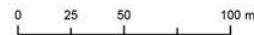
Coastal Pathway Category

- Completed
- 2.4 - 2.9m, Low Priority
- Less than 2.4m, High Priority
- Less than 2.4m, Medium Priority
- Less than 2.4m, Low Priority
- - - Temporary Link

Missing Links Priority

- - - High
- - - Low
- - - Long Term Planning Option

- Property Boundaries
- Geotagged Photos



COASTAL PATHWAY MASTER PLAN Appendix A

Scale 1: 2000 @ A3
 0 20 40 60 80 100m

DRAFT B
 2016

Map 46



Long-term planning option as detailed in Maroochy North Shore Local Area Plan. Pathway alignment subject to future investigation.



Key Plan

Coastal Pathway Category

- Completed
- 2.4 - 2.9m, Low Priority
- Less than 2.4m, High Priority
- Less than 2.4m, Medium Priority
- Less than 2.4m, Low Priority

Missing Links Priority

- High
- Low
- Long Term Planning Option
- Property Boundaries
- Geotagged Photos



Map 48 - A



Map 48 - B

Long-term planning option, pathway alignment subject to future investigation.



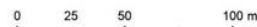
Key Plan

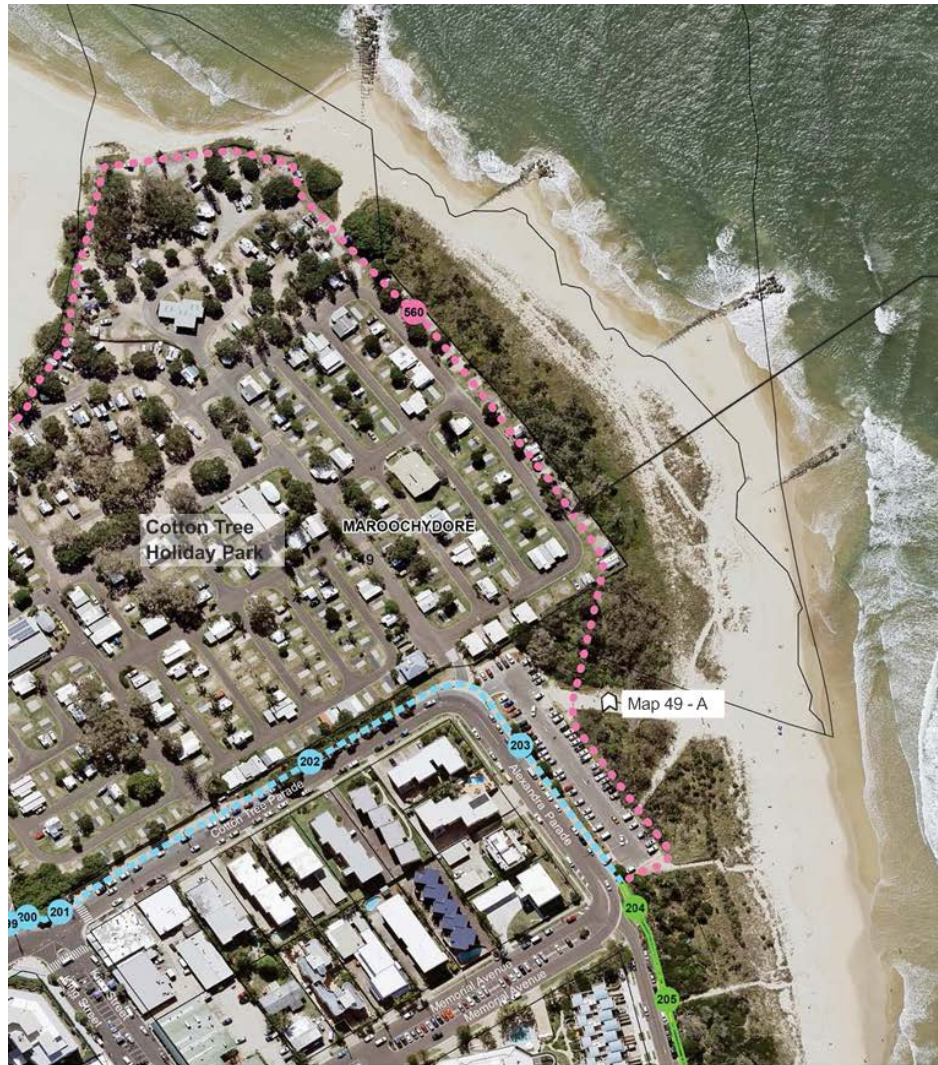
Coastal Pathway Category

- Completed
- 2.4 - 2.9m, Low Priority
- Less than 2.4m, High Priority
- Less than 2.4m, Medium Priority
- Less than 2.4m, Low Priority
- - - Existing Link

Missing Links Priority

- - - High
- - - Low
- - - Long Term Planning Option
- Property Boundaries
- Geotagged Photos





Map 49 - A

Long-term planning option, pathway alignment subject to future investigation.



Key Plan

Coastal Pathway Category

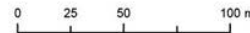
- Completed
- 2.4 - 2.9m, Low Priority
- Less than 2.4m, High Priority
- Less than 2.4m, Medium Priority
- Less than 2.4m, Low Priority
- Existing Link

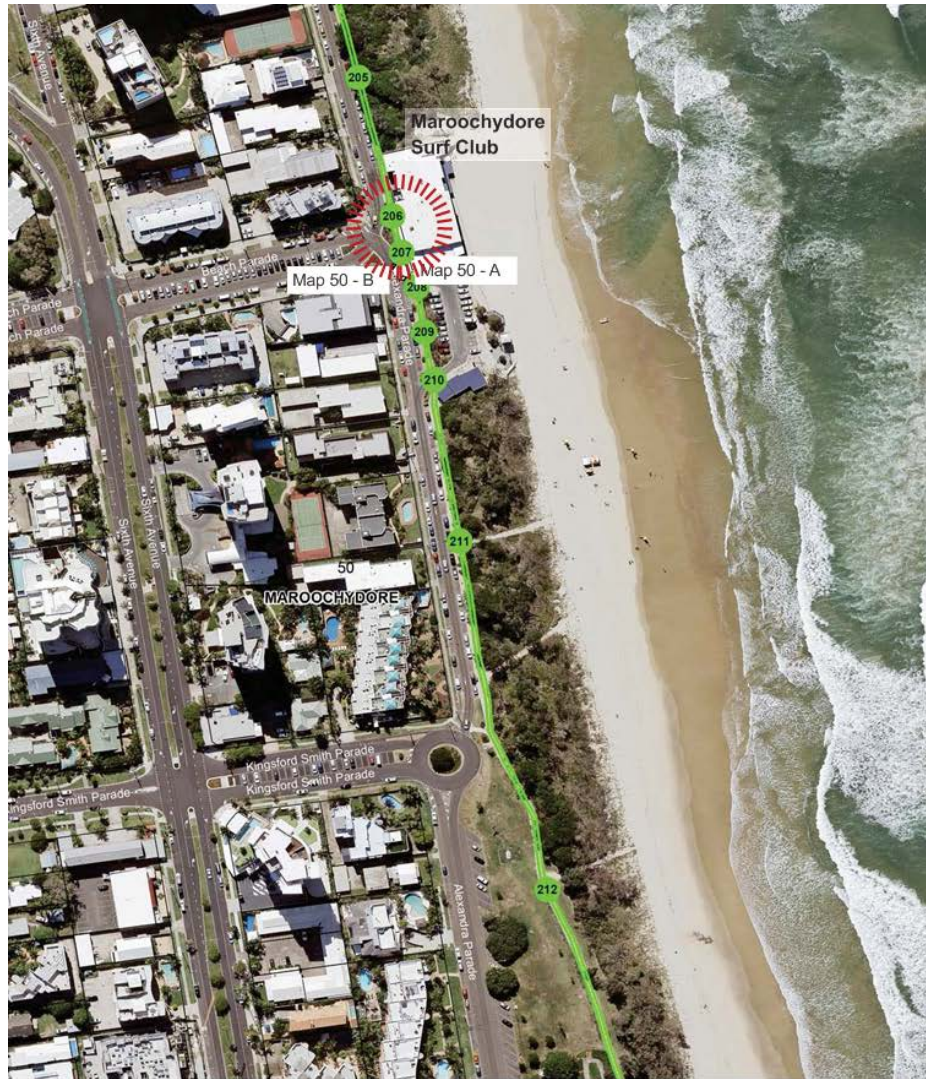
Missing Links Priority

- High
- Low
- Long Term Planning Option

Property Boundaries

Geotagged Photos





Map 50 - A



Map 50 - B



Key Plan

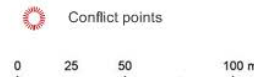
Coastal Pathway Category

- Completed
- 2.4 - 2.9m, Low Priority
- Less than 2.4m, High Priority
- Less than 2.4m, Medium Priority
- Less than 2.4m, Low Priority
- - - Temporary Link

Missing Links Priority

- - - High
- - - Low
- - - Long Term Planning Option

- Property Boundaries
- Geotagged Photos

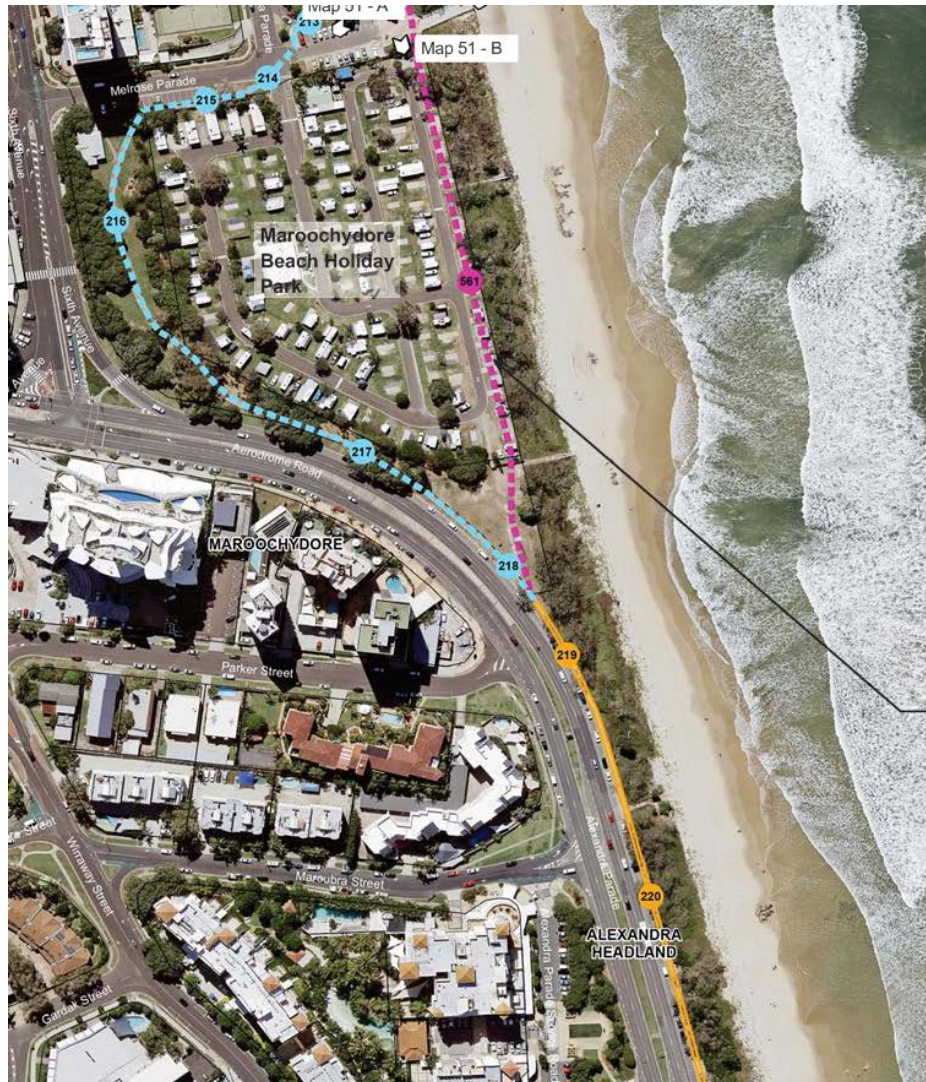


COASTAL PATHWAY MASTER PLAN Appendix A

Scale 1: 2000 @ A3
 0 20 40 60 80 100m

DRAFT B
 2016

Map 50



Map 51 - A



Map 51 - B



Map 51 - C

Pathway alignment subject to future investigation.



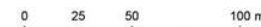
Key Plan

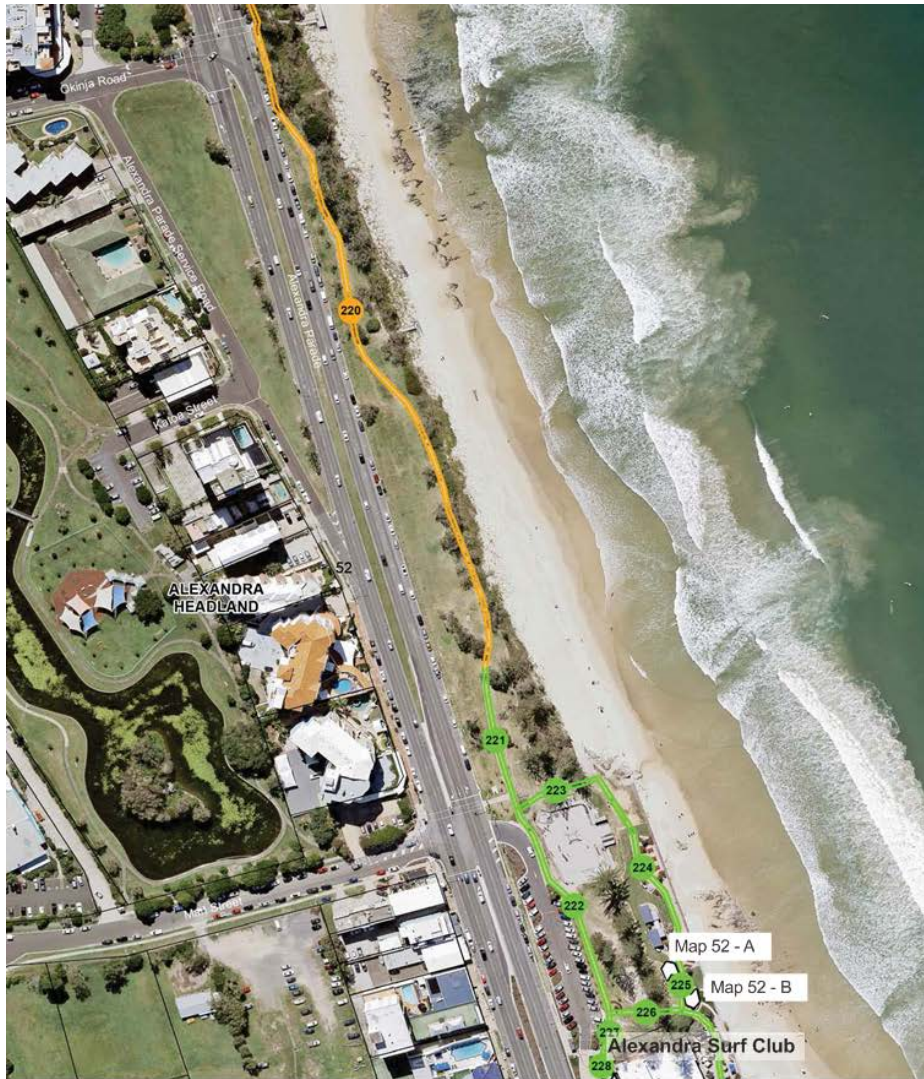
Coastal Pathway Category

- Completed
- 2.4 - 2.9m, Low Priority
- Less than 2.4m, High Priority
- Less than 2.4m, Medium Priority
- Less than 2.4m, Low Priority
- - - Temporary Link

Missing Links Priority

- - - High
- - - Low
- - - Long Term Planning Option
- Property Boundaries
- Geotagged Photos





Map 52 - A



Map 52 - B



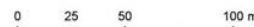
Key Plan

Coastal Pathway Category

- Completed
- 2.4 - 2.9m, Low Priority
- Less than 2.4m, High Priority
- Less than 2.4m, Medium Priority
- Less than 2.4m, Low Priority
- - - Temporary Link

Missing Links Priority

- - - High
- - - Low
- - - Long Term Planning Option
- Property Boundaries
- Geotagged Photos





Map 53 - A



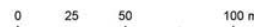
Key Plan

Coastal Pathway Category

- Completed
- 2.4 - 2.9m, Low Priority
- Less than 2.4m, High Priority
- Less than 2.4m, Medium Priority
- Less than 2.4m, Low Priority
- - - Temporary Link

Missing Links Priority

- - - High
- - - Low
- - - Long Term Planning Option
- Property Boundaries
- Geotagged Photos



COASTAL PATHWAY MASTER PLAN Appendix A

Scale 1: 2000 @ A3
 0 20 40 60 80 100m

DRAFT B
 2016

Map 53



Map 54 - A



Map 54 - B



Map 54 - C



Key Plan

Coastal Pathway Category

- Completed
- 2.4 - 2.9m, Low Priority
- Less than 2.4m, High Priority
- Less than 2.4m, Medium Priority
- Less than 2.4m, Low Priority
- - - Temporary Link

Missing Links Priority

- - - High
- - - Low
- - - Long Term Planning Option
- Property Boundaries
- Geotagged Photos



COASTAL PATHWAY MASTER PLAN Appendix A

Scale 1: 2000 @ A3
 0 20 40 60 80 100m

DRAFT B
 2016

Map 54



Map 55 - A



Map 55 - B



Map 55 - C

Coastal Pathway as detailed in Mooloolaba Master Plan.



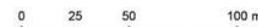
Key Plan

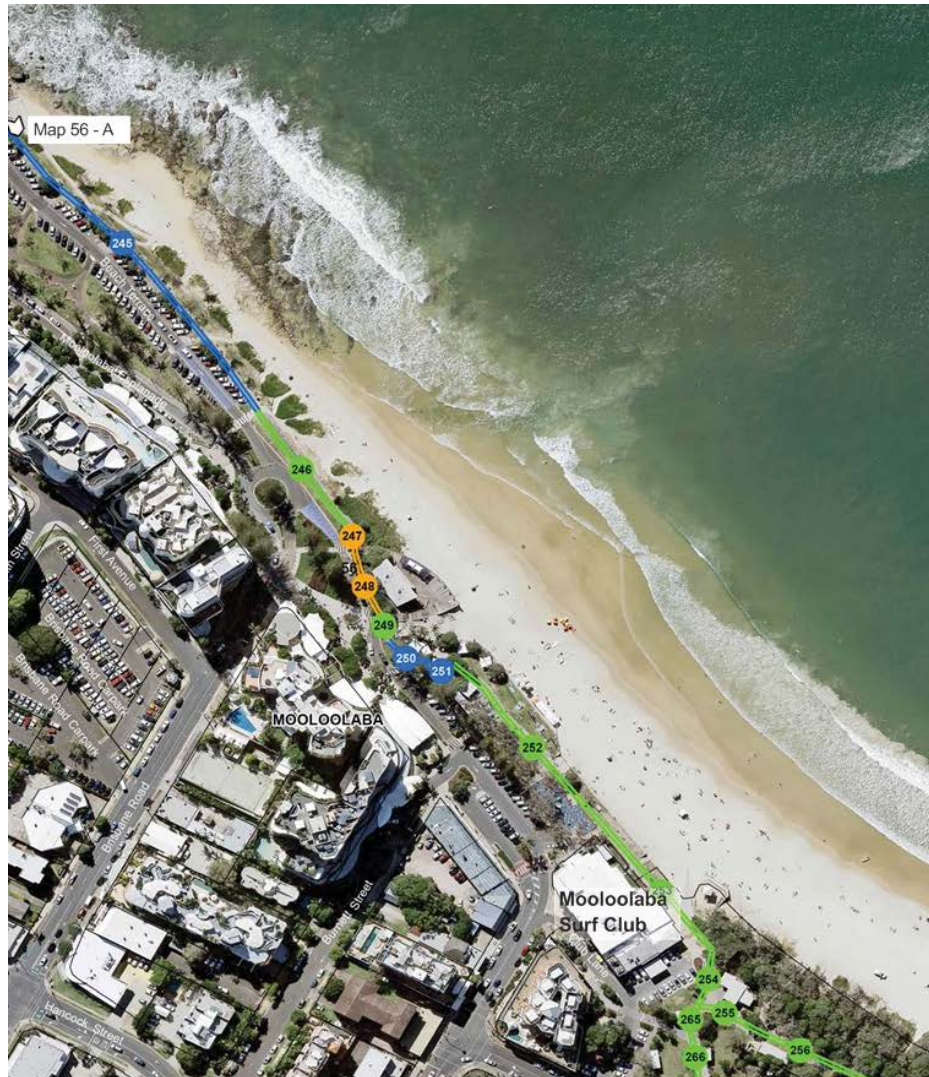
Coastal Pathway Category

- Completed
- 2.4 - 2.9m, Low Priority
- Less than 2.4m, High Priority
- Less than 2.4m, Medium Priority
- Less than 2.4m, Low Priority
- - - Temporary Link

Missing Links Priority

- - - High
- - - Low
- - - Long Term Planning Option
- Property Boundaries
- Geotagged Photos





Map 56 - A



Key Plan

Coastal Pathway Category

- Completed
- 2.4 - 2.9m, Low Priority
- Less than 2.4m, High Priority
- Less than 2.4m, Medium Priority
- Less than 2.4m, Low Priority
- - - Temporary Link

Missing Links Priority

- - - High
- - - Low
- - - Long Term Planning Option
- Property Boundaries
- Geotagged Photos

0 25 50 100 m

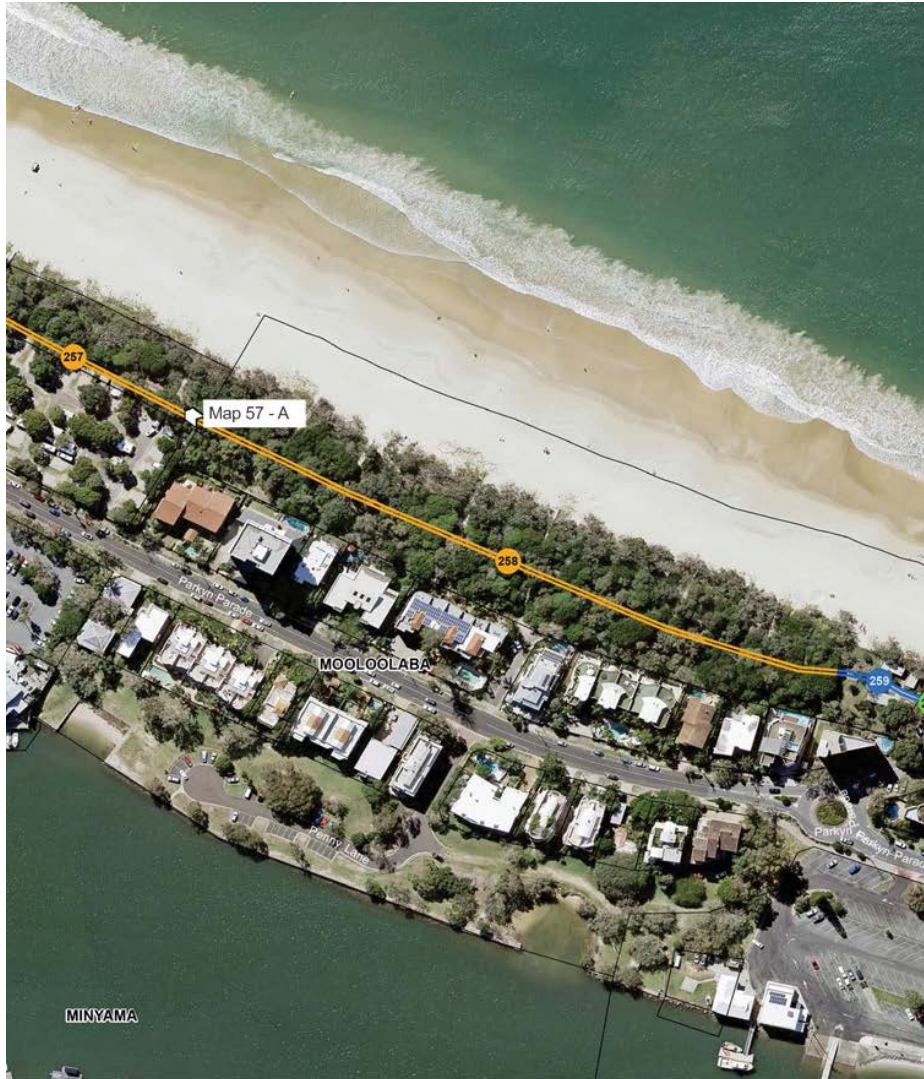


COASTAL PATHWAY MASTER PLAN Appendix A

Scale 1: 2000 @ A3
 0 20 40 60 80 100m

DRAFT B
 2016

Map 56



Map 57 - A



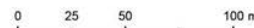
Key Plan

Coastal Pathway Category

- Completed
- 2.4 - 2.9m, Low Priority
- Less than 2.4m, High Priority
- Less than 2.4m, Medium Priority
- Less than 2.4m, Low Priority
- - - Temporary Link

Missing Links Priority

- - - High
- - - Low
- - - Long Term Planning Option
- Property Boundaries
- Geotagged Photos

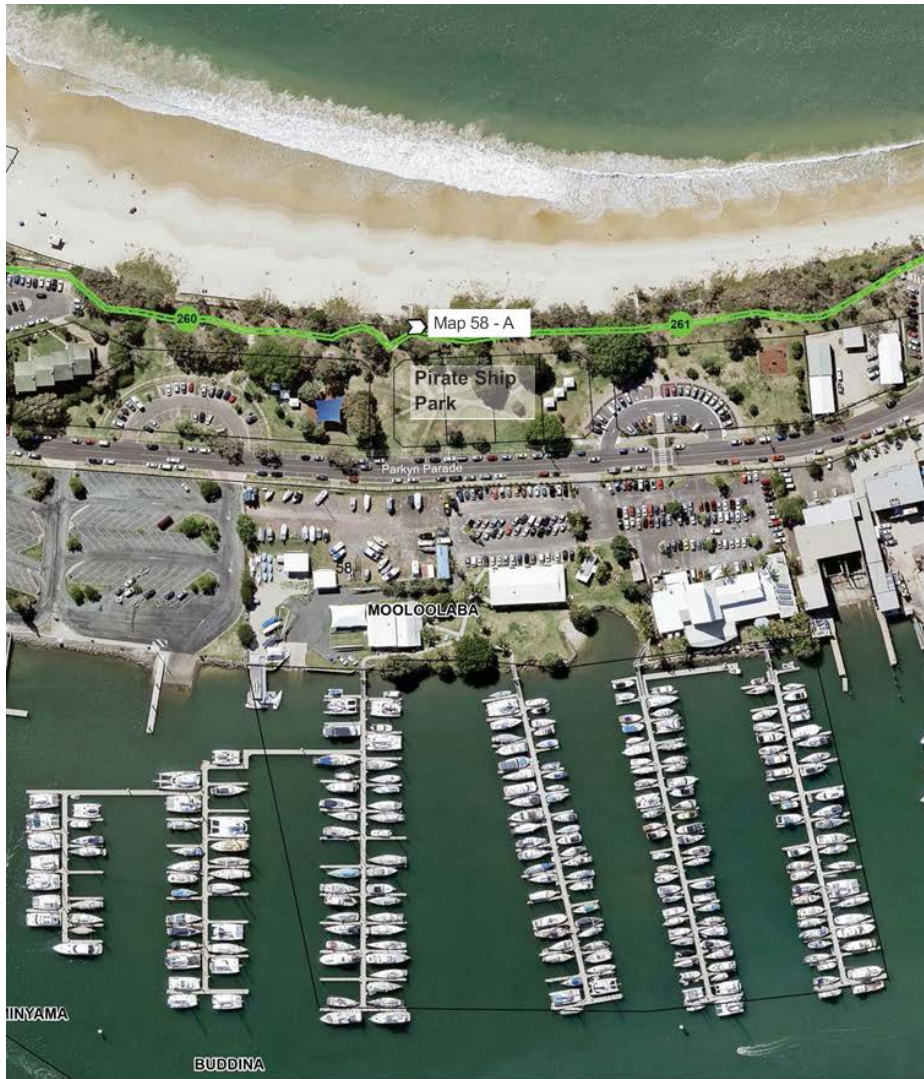


COASTAL PATHWAY MASTER PLAN Appendix A

Scale 1: 2000 @ A3
 0 20 40 60 80 100m

DRAFT B
 2016

Map 57



Map 58 - A



Key Plan

Coastal Pathway Category

- Completed
- 2.4 - 2.9m, Low Priority
- Less than 2.4m, High Priority
- Less than 2.4m, Medium Priority
- Less than 2.4m, Low Priority
- - - Temporary Link

Missing Links Priority

- - - High
- - - Low
- - - Long Term Planning Option
- Property Boundaries
- Geotagged Photos

0 25 50 100 m



COASTAL PATHWAY MASTER PLAN Appendix A

Scale 1: 2000 @ A3
 0 20 40 60 80 100m

DRAFT B
 2016

Map 58



Map 59 - A



Map 59 - B



Map 59 - C



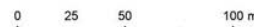
Key Plan

Coastal Pathway Category

- Completed
- 2.4 - 2.9m, Low Priority
- Less than 2.4m, High Priority
- Less than 2.4m, Medium Priority
- Less than 2.4m, Low Priority
- - - Temporary Link

Missing Links Priority

- - - High
- - - Low
- - - Long Term Planning Option
- Property Boundaries
- Geotagged Photos

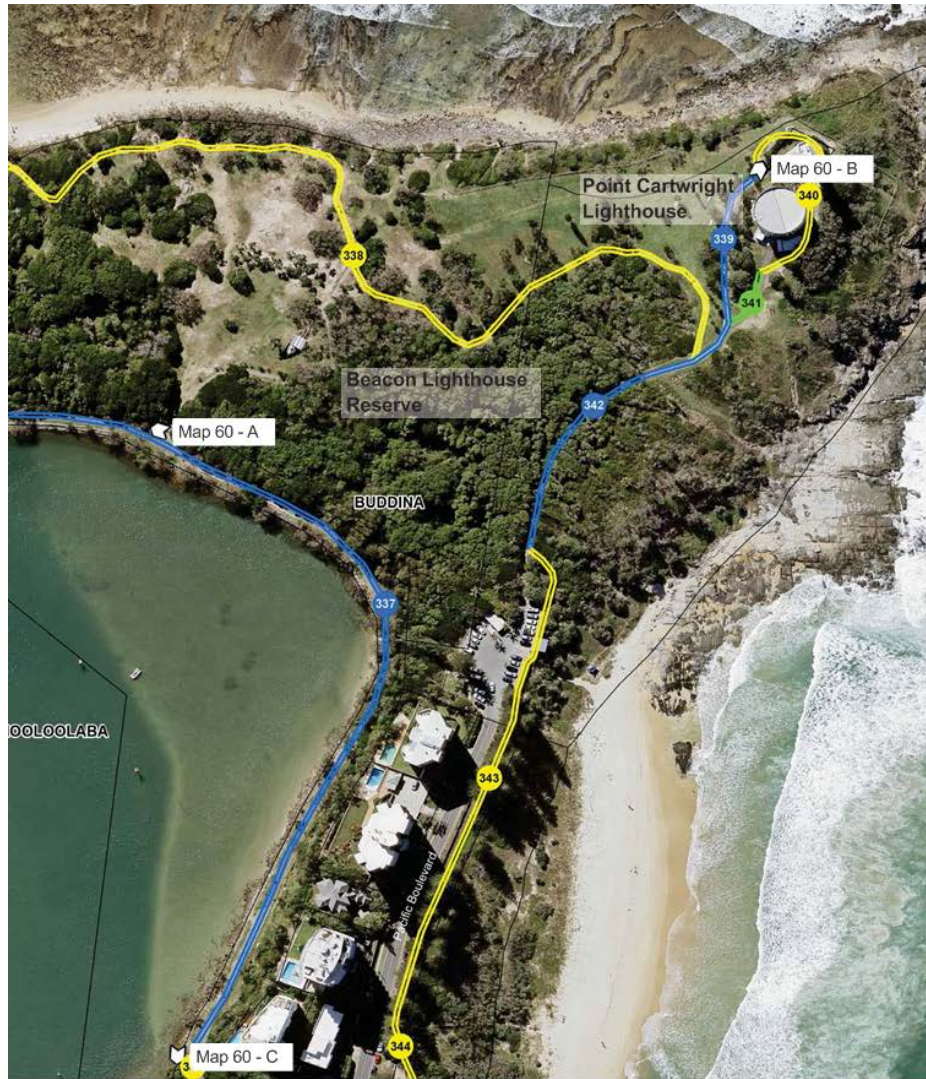


COASTAL PATHWAY MASTER PLAN Appendix A

Scale 1: 2000 @ A3
 0 20 40 60 80 100m

DRAFT B
 2016

Map 59



Map 60 - A



Map 60 - B



Map 60 - C



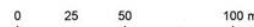
Key Plan

Coastal Pathway Category

- Completed
- 2.4 - 2.9m, Low Priority
- Less than 2.4m, High Priority
- Less than 2.4m, Medium Priority
- Less than 2.4m, Low Priority
- - - Temporary Link

Missing Links Priority

- - - High
- - - Low
- - - Long Term Planning Option
- Property Boundaries
- Geotagged Photos

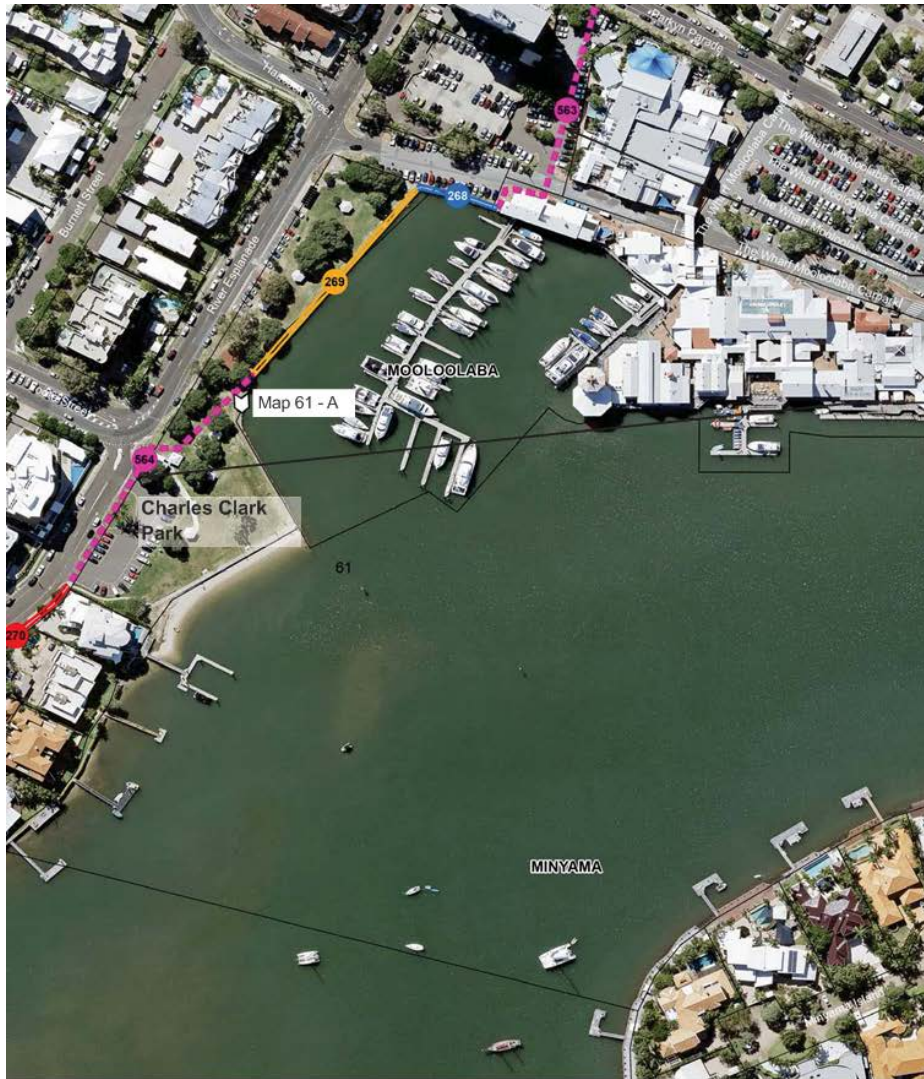


COASTAL PATHWAY MASTER PLAN Appendix A



DRAFT B
2016

Map 60



Map 61 - A

Coastal Pathway as detailed in Mooloolaba Master Plan. Pathway alignment subject to future development and further investigation

Coastal Pathway part of Brisbane Road Bikeway



Key Plan

Coastal Pathway Category

- Completed
- 2.4 - 2.9m, Low Priority
- Less than 2.4m, High Priority
- Less than 2.4m, Medium Priority
- Less than 2.4m, Low Priority
- - - Temporary Link

Missing Links Priority

- - - High
- - - Low
- - - Long Term Planning Option
- Property Boundaries
- Geotagged Photos



Potential future bridge part of Brisbane Road Bikeway

Coastal Pathway part of Brisbane Road Bikeway



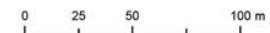
Key Plan

Coastal Pathway Category

- Completed
- 2.4 - 2.9m, Low Priority
- Less than 2.4m, High Priority
- Less than 2.4m, Medium Priority
- Less than 2.4m, Low Priority
- - - Temporary Link

Missing Links Priority

- - - High
- - - Low
- - - Long Term Planning Option
- Property Boundaries
- Geotagged Photos



COASTAL PATHWAY MASTER PLAN Appendix A



DRAFT B
2016

Map 62



Coastal Pathway part of Brisbane Road Bikeway

Coastal Pathway part of Stage 1 Brisbane Road Bikeway. Path alignment subject to design of DTMR Mooloolah River Interchange project.



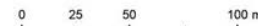
Key Plan

Coastal Pathway Category

- Completed
- 2.4 - 2.9m, Low Priority
- Less than 2.4m, High Priority
- Less than 2.4m, Medium Priority
- Less than 2.4m, Low Priority
- Temporary Link

Missing Links Priority

- High
- Low
- Long Term Planning Option
- Property Boundaries
- Geotagged Photos



COASTAL PATHWAY MASTER PLAN Appendix A

Scale 1: 2000 @ A3
 0 20 40 60 80 100m

DRAFT B
 2016

Map 63



Map 64 - A

Coastal Pathway part of Brisbane Road Bikeway



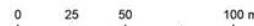
Key Plan

Coastal Pathway Category

- Completed
- 2.4 - 2.9m, Low Priority
- Less than 2.4m, High Priority
- Less than 2.4m, Medium Priority
- Less than 2.4m, Low Priority
- Temporary Link

Missing Links Priority

- High
- Low
- Long Term Planning Option
- Property Boundaries
- Geotagged Photos



COASTAL PATHWAY MASTER PLAN Appendix A

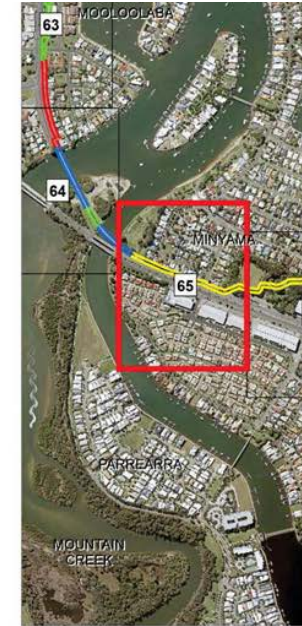
Scale 1: 2000 @ A3
 0 20 40 60 80 100m

DRAFT B
 2016

Map 64



Map 65 - A



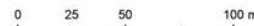
Key Plan

Coastal Pathway Category

- Completed
- 2.4 - 2.9m, Low Priority
- Less than 2.4m, High Priority
- Less than 2.4m, Medium Priority
- Less than 2.4m, Low Priority
- Temporary Link

Missing Links Priority

- High
- Low
- Long Term Planning Option
- Property Boundaries
- Geotagged Photos



COASTAL PATHWAY MASTER PLAN Appendix A

Scale 1: 2000 @ A3
 0 20 40 60 80 100m

DRAFT B
 2016

Map 65



Map 66 - A



Map 66 - B



Map 66 - C

Existing access easement, required further investigation in regard to bike access



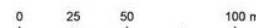
Key Plan

Coastal Pathway Category

- Completed
- 2.4 - 2.9m, Low Priority
- Less than 2.4m, High Priority
- Less than 2.4m, Medium Priority
- Less than 2.4m, Low Priority
- Temporary Link

Missing Links Priority

- High
- Low
- Long Term Planning Option
- Property Boundaries
- Geotagged Photos





Map 67 - A



Map 67 - B



Map 67 - C



Key Plan

Coastal Pathway Category

- Completed
- 2.4 - 2.9m, Low Priority
- Less than 2.4m, High Priority
- Less than 2.4m, Medium Priority
- Less than 2.4m, Low Priority
- - - Temporary Link

Missing Links Priority

- - - High
- - - Low
- - - Long Term Planning Option
- Property Boundaries
- Geotagged Photos

Long-term planning option, pathway alignment subject to future investigation.

Existing access easement, required further investigation in regard to bike access





Map 68 - A



Map 68 - B



Map 68 - C



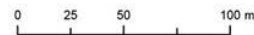
Key Plan

Coastal Pathway Category

- Completed
- 2.4 - 2.9m, Low Priority
- Less than 2.4m, High Priority
- Less than 2.4m, Medium Priority
- Less than 2.4m, Low Priority
- - - Temporary Link

Missing Links Priority

- - - High
- - - Low
- - - Long Term Planning Option
- Property Boundaries
- Geotagged Photos

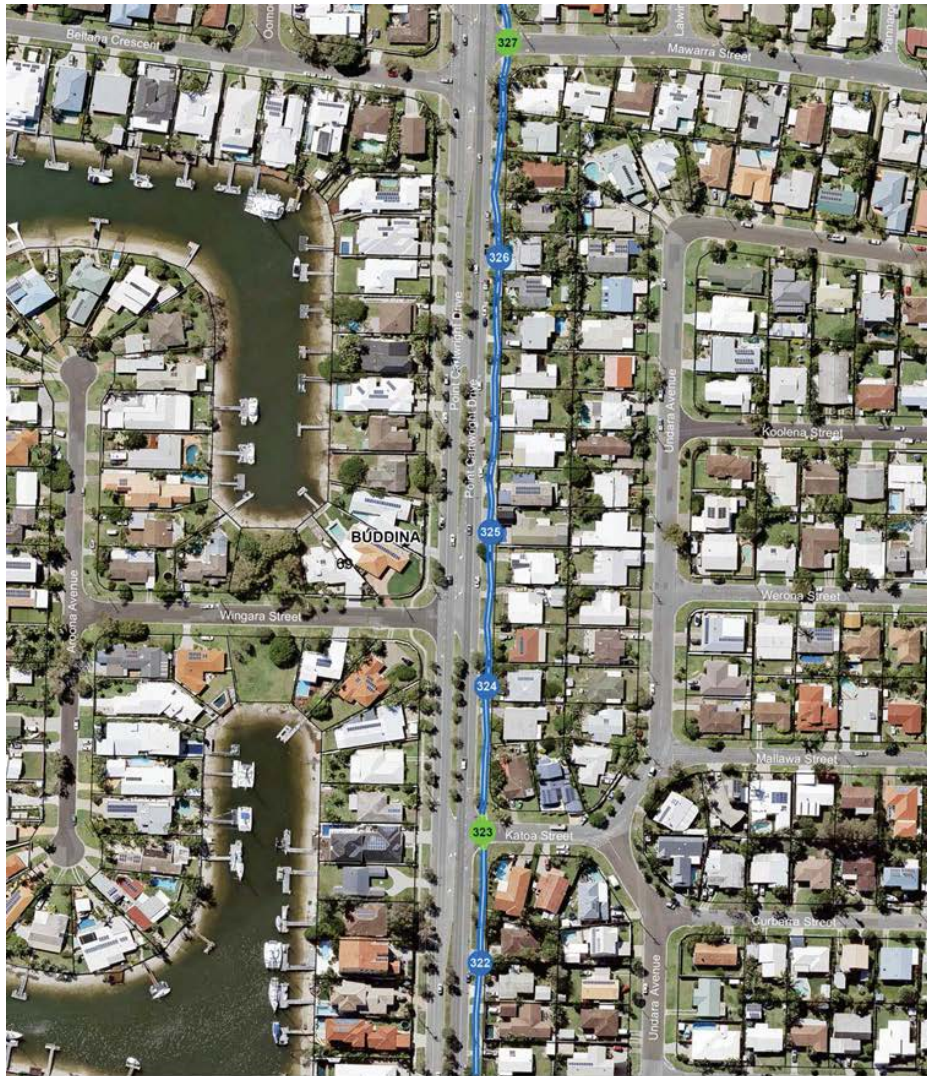


COASTAL PATHWAY MASTER PLAN Appendix A

Scale 1: 2000 @ A3
 0 20 40 60 80 100m

DRAFT B
 2016

Map 68



COASTAL PATHWAY MASTER PLAN Appendix A

Scale 1: 2000 @ A3
 0 20 40 60 80 100m

DRAFT B
 2016

Map 69



Map 70 - A



Map 70 - B



Map 70 - C



Key Plan

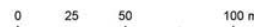
Coastal Pathway Category

- Completed
- 2.4 - 2.9m, Low Priority
- Less than 2.4m, High Priority
- Less than 2.4m, Medium Priority
- Less than 2.4m, Low Priority
- - - Temporary Link

Missing Links Priority

- - - High
- - - Low
- - - Long Term Planning Option
- Property Boundaries
- Geotagged Photos

Proposed Coastal Pathway link





Map 71 - A



Map 71 - B



Key Plan

Coastal Pathway Category

- Completed
- 2.4 - 2.9m, Low Priority
- Less than 2.4m, High Priority
- Less than 2.4m, Medium Priority
- Less than 2.4m, Low Priority
- Temporary Link

Missing Links Priority

- High
- Low
- Long Term Planning Option
- Property Boundaries
- Geotagged Photos

0 25 50 100 m



COASTAL PATHWAY MASTER PLAN Appendix A

Scale 1: 2000 @ A3
 0 20 40 60 80 100m

DRAFT B
 2016

Map 71



Key Plan

Coastal Pathway Category

- Completed
- 2.4 - 2.9m, Low Priority
- Less than 2.4m, High Priority
- Less than 2.4m, Medium Priority
- Less than 2.4m, Low Priority
- - - Temporary Link

Missing Links Priority

- - - High
- - - Low
- - - Long Term Planning Option
- Property Boundaries
- Geotagged Photos

0 25 50 100 m



COASTAL PATHWAY MASTER PLAN Appendix A

Scale 1: 2000 @ A3
 0 20 40 60 80 100m

DRAFT B
 2016

Map 72



Key Plan

Coastal Pathway Category

-  Completed
-  2.4 - 2.9m, Low Priority
-  Less than 2.4m, High Priority
-  Less than 2.4m, Medium Priority
-  Less than 2.4m, Low Priority
-  Temporary Link

Missing Links Priority

-  High
-  Low
-  Long Term Planning Option
-  Property Boundaries
-  Geotagged Photos

0 25 50 100 m

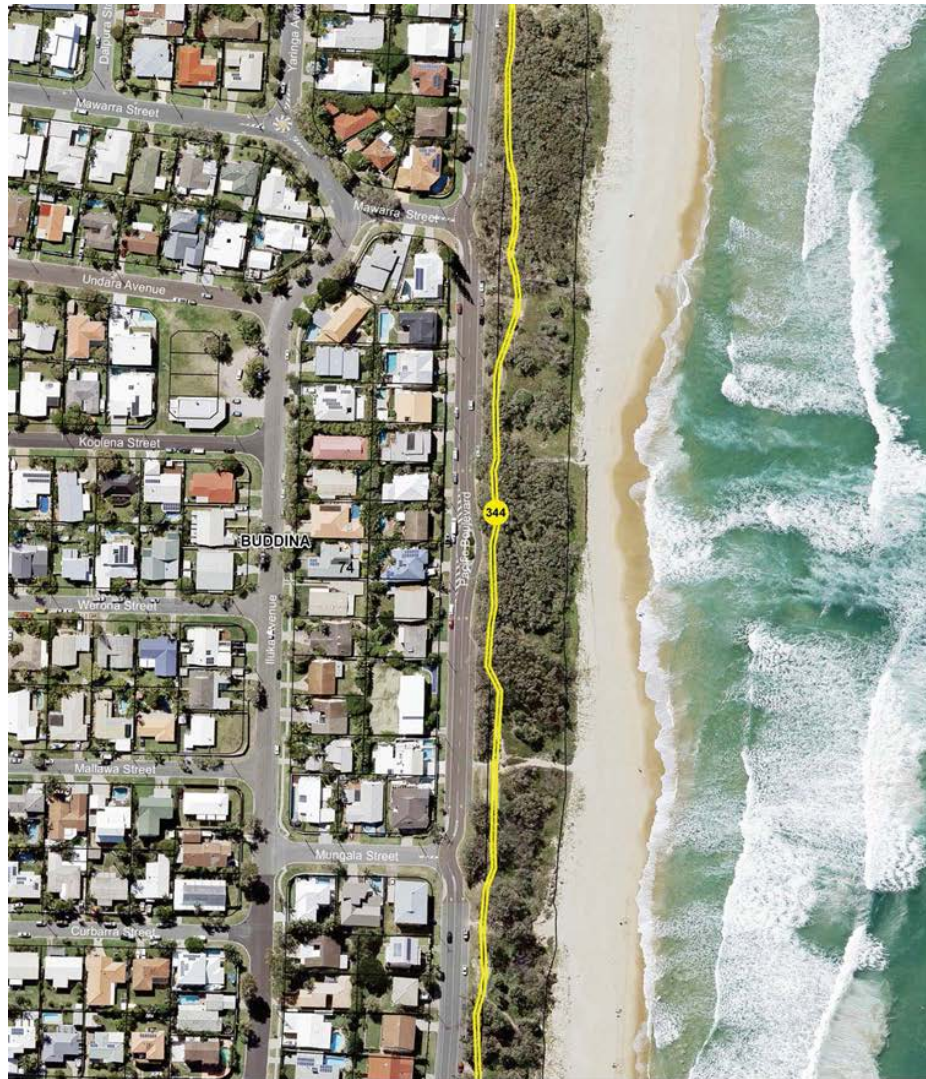


COASTAL PATHWAY MASTER PLAN Appendix A

Scale 1: 2000 @ A3
 0 20 40 60 80 100m

DRAFT B
 2016

Map 73



Key Plan

Coastal Pathway Category

- Completed
- 2.4 - 2.9m, Low Priority
- Less than 2.4m, High Priority
- Less than 2.4m, Medium Priority
- Less than 2.4m, Low Priority
- - - Temporary Link

Missing Links Priority

- - - High
- - - Low
- - - Long Term Planning Option
- Property Boundaries
- Geotagged Photos

0 25 50 100 m

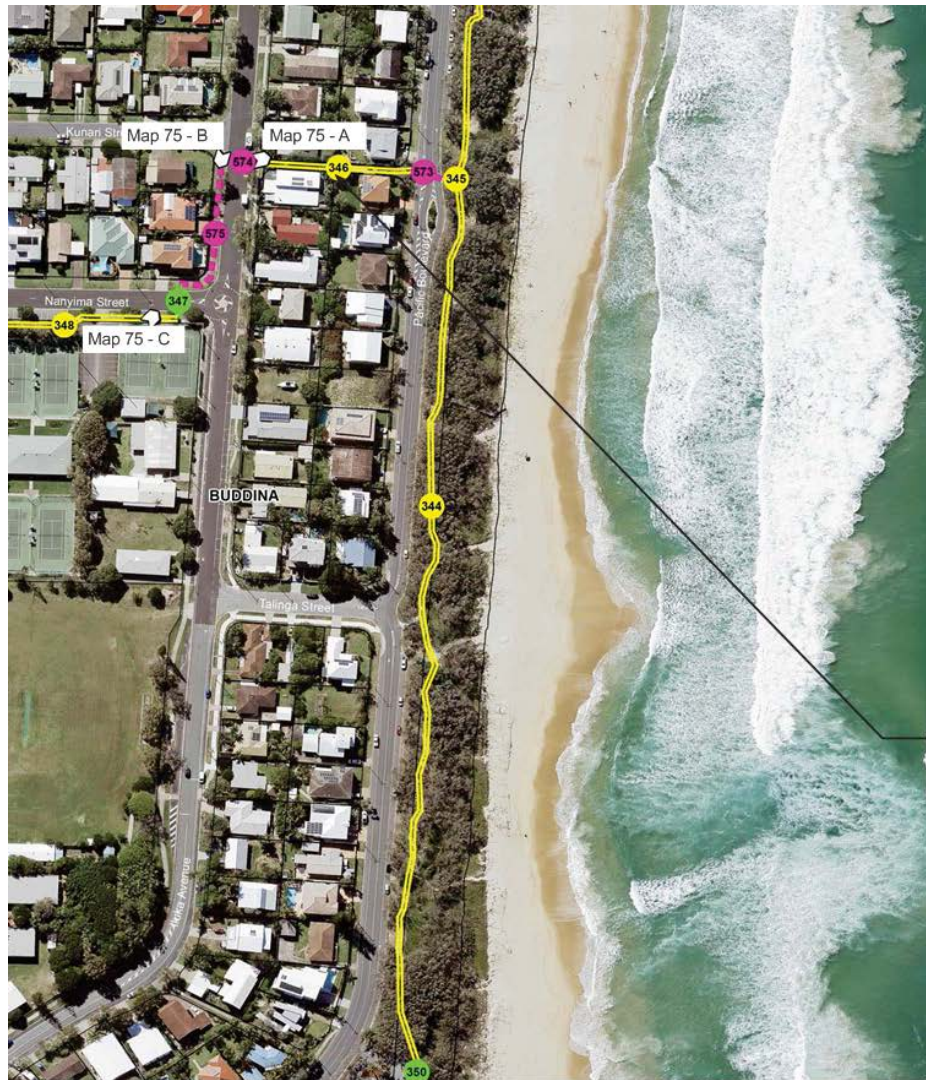


COASTAL PATHWAY MASTER PLAN Appendix A

Scale 1: 2000 @ A3
 0 20 40 60 80 100m

DRAFT B
 2016

Map 74



Map 75 - A



Map 75 - B



Map 75 - C



Key Plan

Coastal Pathway Category

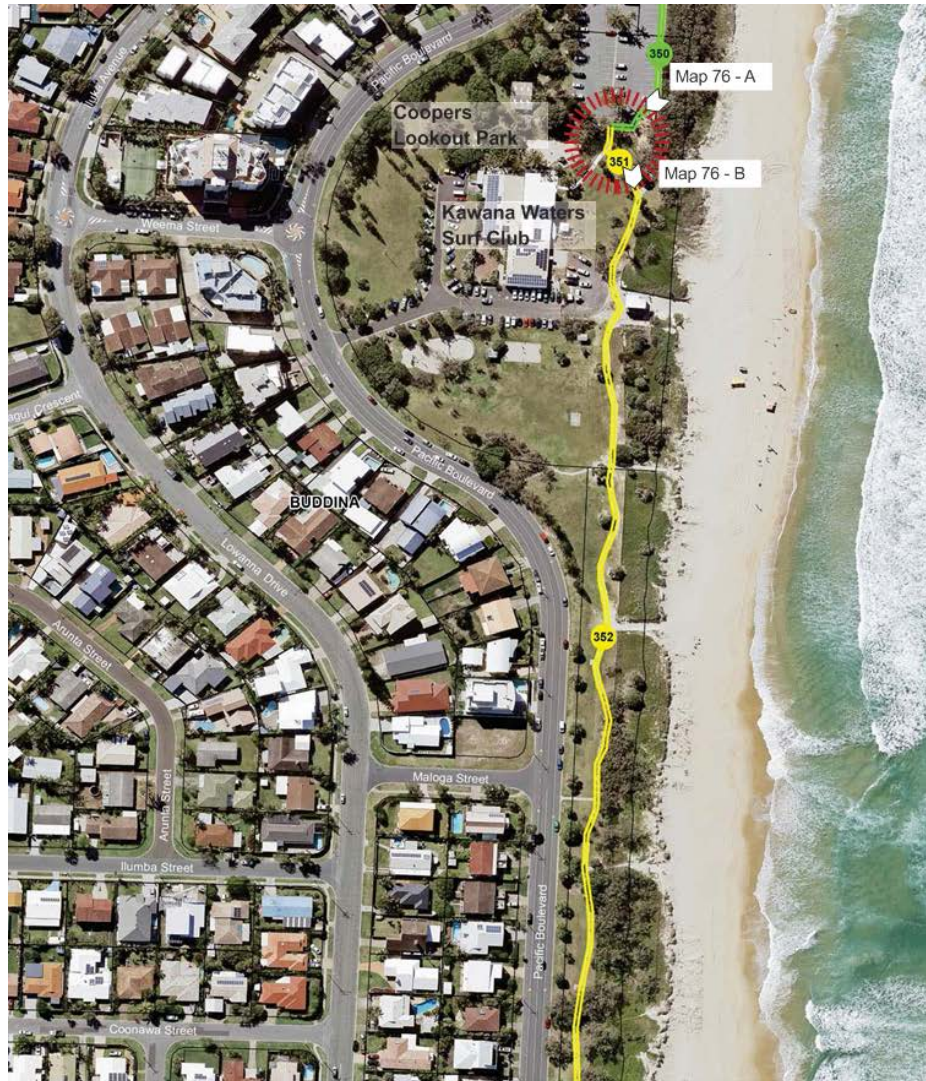
- Completed
- 2.4 - 2.9m, Low Priority
- Less than 2.4m, High Priority
- Less than 2.4m, Medium Priority
- Less than 2.4m, Low Priority
- - - Temporary Link

Missing Links Priority

- - - High
- - - Low
- - - Long Term Planning Option
- Property Boundaries
- Geotagged Photos

Proposed Coastal Pathway link





Map 76 - A



Map 76 - B



Key Plan

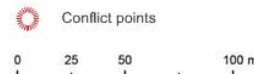
Coastal Pathway Category

- Completed
- 2.4 - 2.9m, Low Priority
- Less than 2.4m, High Priority
- Less than 2.4m, Medium Priority
- Less than 2.4m, Low Priority
- Temporary Link

Missing Links Priority

- High
- Low
- Long Term Planning Option

- Property Boundaries
- Geotagged Photos



COASTAL PATHWAY MASTER PLAN Appendix A

Scale 1:2000 @ A3
 0 20 40 60 80 100m

DRAFT B
 2016

Map 76



Map 77 - A



Map 77 - B



Map 77 - C



Key Plan

Coastal Pathway Category

- Completed
- 2.4 - 2.9m, Low Priority
- Less than 2.4m, High Priority
- Less than 2.4m, Medium Priority
- Less than 2.4m, Low Priority
- - - Temporary Link

Missing Links Priority

- - - High
- - - Low
- . . . Long Term Planning Option
- Property Boundaries
- Geotagged Photos

Indicative pathway alignment - final location will be subject to detailed site investigation. Pathway corridor will aim to avoid impacts on native vegetation by aligning with cleared and weed infested areas. Bush regeneration will be undertaken as part of the work.





Map 78 - A



Map 78 - B



Map 78 - C

Indicative pathway alignment - final location will be subject to detailed site investigation. Pathway corridor will aim to avoid impacts on native vegetation by aligning with cleared and weed infested areas. Bush regeneration will be undertaken as part of the work.



Key Plan

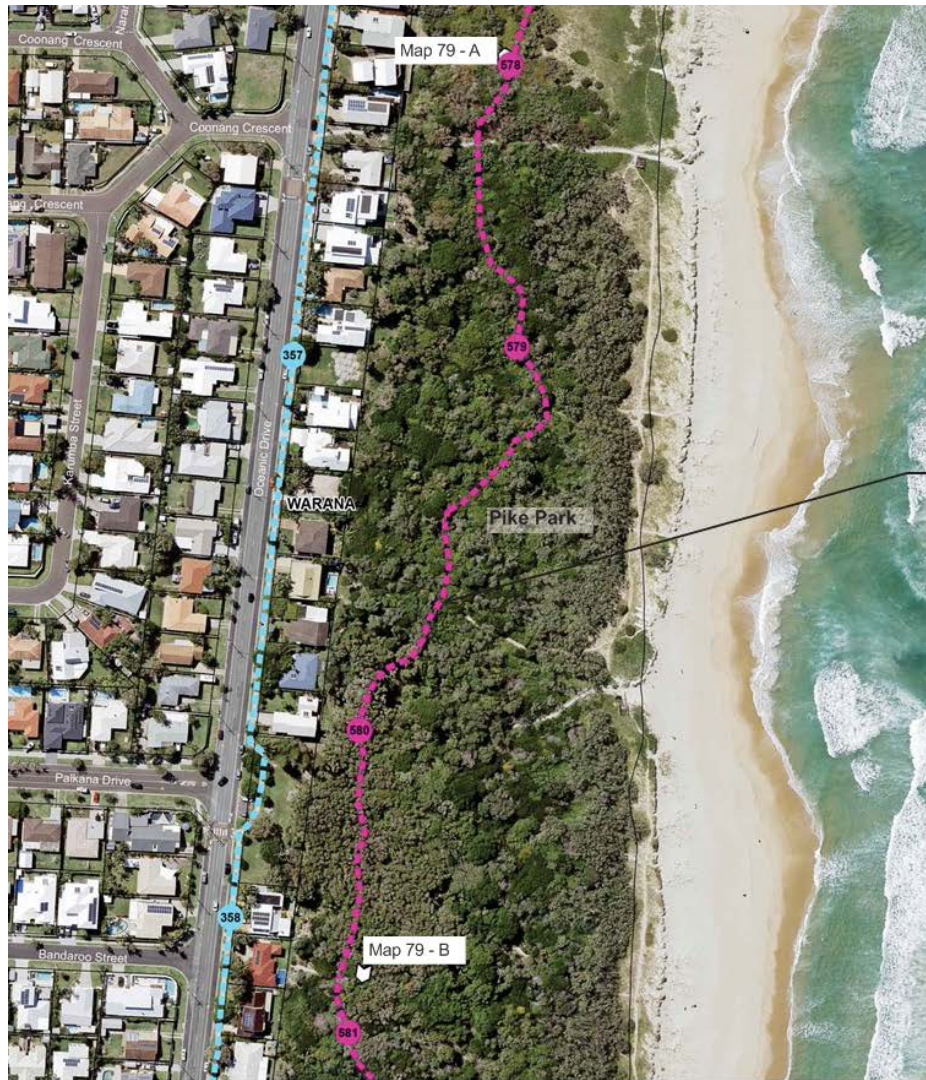
Coastal Pathway Category

- Completed
- 2.4 - 2.9m, Low Priority
- Less than 2.4m, High Priority
- Less than 2.4m, Medium Priority
- Less than 2.4m, Low Priority
- Temporary Link

Missing Links Priority

- High
- Low
- Long Term Planning Option
- Property Boundaries
- Geotagged Photos





Map 79 - A



Map 79 - B

Indicative pathway alignment - final location will be subject to detailed site investigation. Pathway corridor will aim to avoid impacts on native vegetation by aligning with cleared and weed infested areas. Bush regeneration will be undertaken as part of the work.



Key Plan

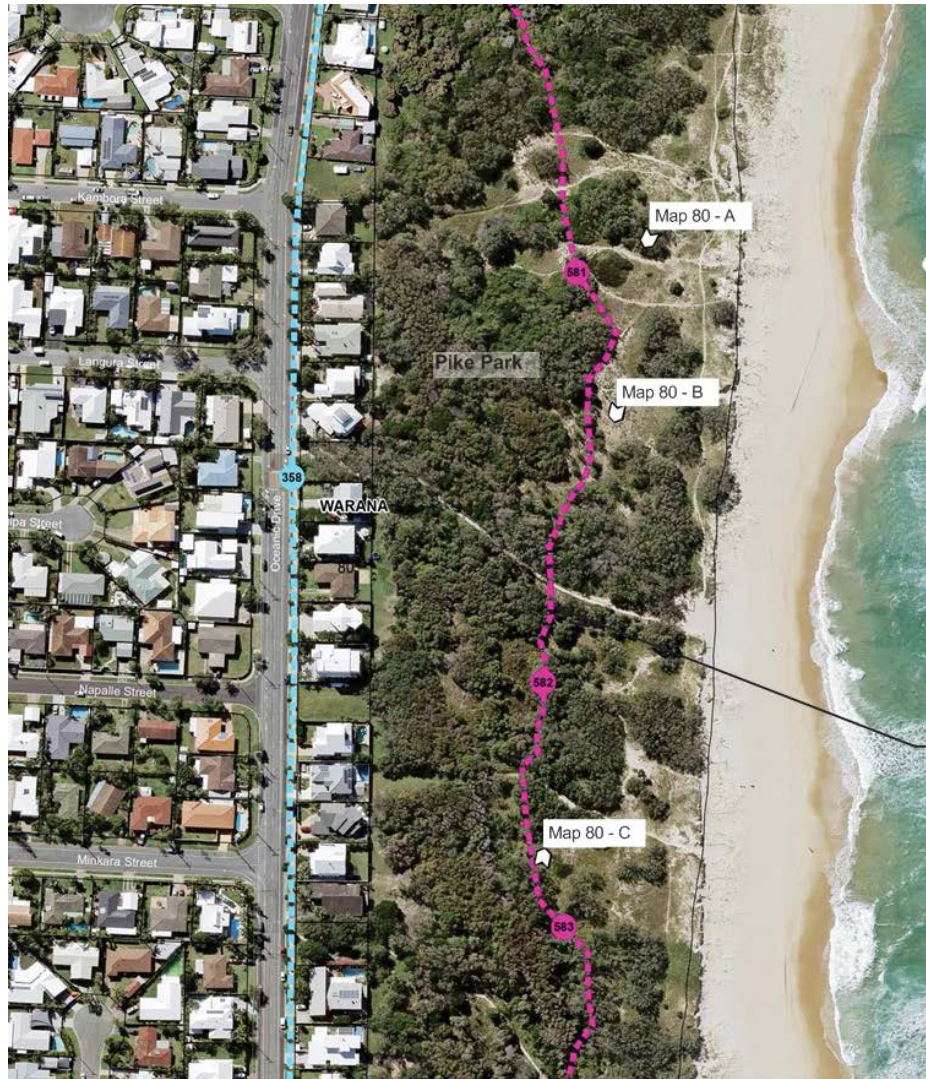
Coastal Pathway Category

- Completed
- 2.4 - 2.9m, Low Priority
- Less than 2.4m, High Priority
- Less than 2.4m, Medium Priority
- Less than 2.4m, Low Priority
- - - Temporary Link

Missing Links Priority

- - - High
- - - Low
- - - Long Term Planning Option
- Property Boundaries
- Geotagged Photos





Map 80 - A



Map 80 - B



Map 80 - C

Indicative pathway alignment - final location will be subject to detailed site investigation. Pathway corridor will aim to avoid impacts on native vegetation by aligning with cleared and weed infested areas. Bush regeneration will be undertaken as part of the work.



Key Plan

Coastal Pathway Category

- Completed
- 2.4 - 2.9m, Low Priority
- Less than 2.4m, High Priority
- Less than 2.4m, Medium Priority
- Less than 2.4m, Low Priority
- - - Temporary Link

Missing Links Priority

- - - High
- - - Low
- - - Long Term Planning Option
- Property Boundaries
- Geotagged Photos





Map 81 - A

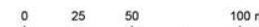


Map 81 - B



Map 81 - C

Indicative pathway alignment - final location will be subject to detailed site investigation. Pathway corridor will aim to avoid impacts on native vegetation by aligning with cleared and weed infested areas. Bush regeneration will be undertaken as part of the work.



Key Plan

Coastal Pathway Category

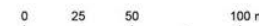
- Completed
- 2.4 - 2.9m, Low Priority
- Less than 2.4m, High Priority
- Less than 2.4m, Medium Priority
- Less than 2.4m, Low Priority
- Temporary Link

Missing Links Priority

- High
- Low
- Long Term Planning Option
- Property Boundaries
- Geotagged Photos



Indicative pathway alignment - final location will be subject to detailed site investigation. Pathway corridor will aim to avoid impacts on native vegetation by aligning with cleared and weed infested areas. Bush regeneration will be undertaken as part of the work.



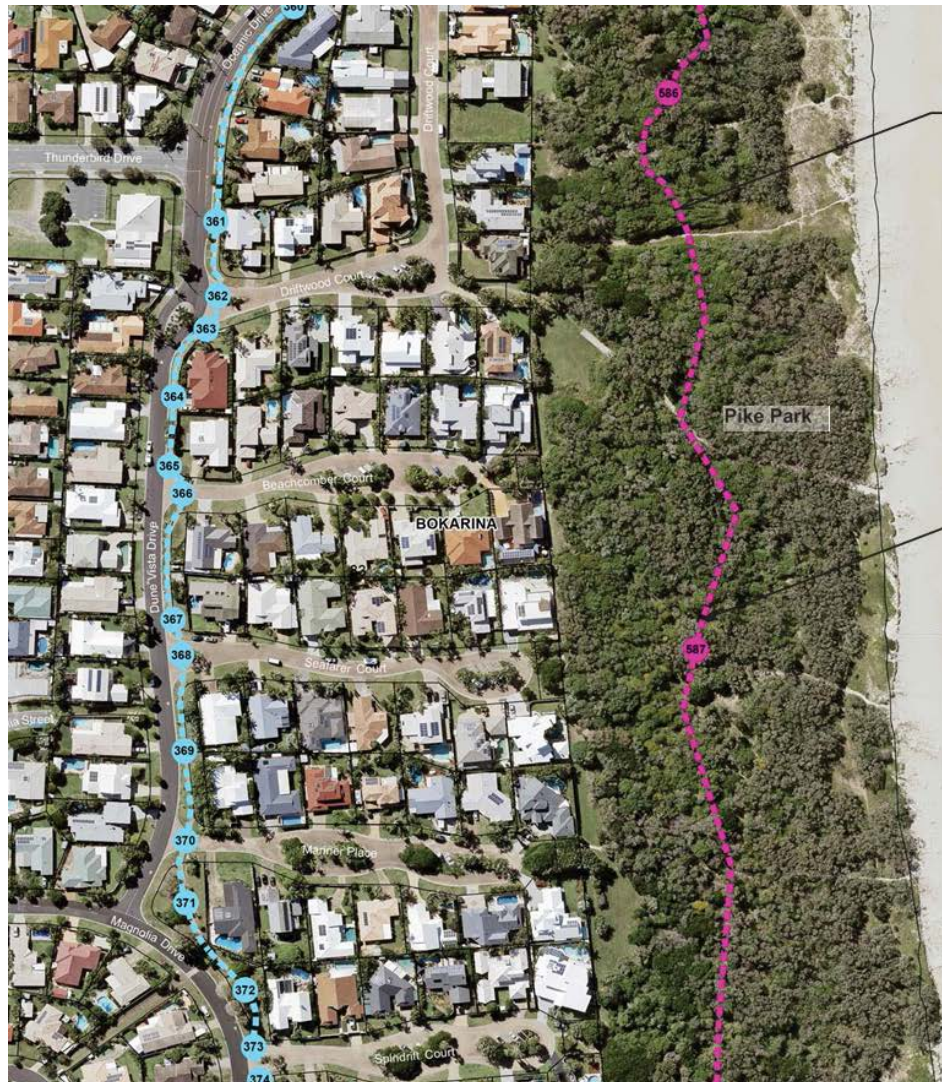
Key Plan

Coastal Pathway Category

- Completed
- 2.4 - 2.9m, Low Priority
- Less than 2.4m, High Priority
- Less than 2.4m, Medium Priority
- Less than 2.4m, Low Priority
- Temporary Link

Missing Links Priority

- High
- Low
- Long Term Planning Option
- Property Boundaries
- Geotagged Photos



Indicative pathway alignment - final location will be subject to detailed site investigation. Pathway corridor will aim to avoid impacts on native vegetation by aligning with cleared and weed infested areas. Bush regeneration will be undertaken as part of the work.

Coastal pathway - currently under construction



Key Plan

Coastal Pathway Category

- Completed
- 2.4 - 2.9m, Low Priority
- Less than 2.4m, High Priority
- Less than 2.4m, Medium Priority
- Less than 2.4m, Low Priority
- Temporary Link

Missing Links Priority

- High
- Low
- Long Term Planning Option

- Property Boundaries
- Geotagged Photos



COASTAL PATHWAY MASTER PLAN Appendix A

Scale 1:2000 @ A3
 0 20 40 60 80 100m

DRAFT B
 2016

Map 83



Indicative pathway alignment -
 subject to approved master plan



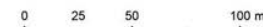
Key Plan

Coastal Pathway Category

- Completed
- 2.4 - 2.9m, Low Priority
- Less than 2.4m, High Priority
- Less than 2.4m, Medium Priority
- Less than 2.4m, Low Priority
- Temporary Link

Missing Links Priority

- High
- Low
- Long Term Planning Option
- Property Boundaries
- Geotagged Photos

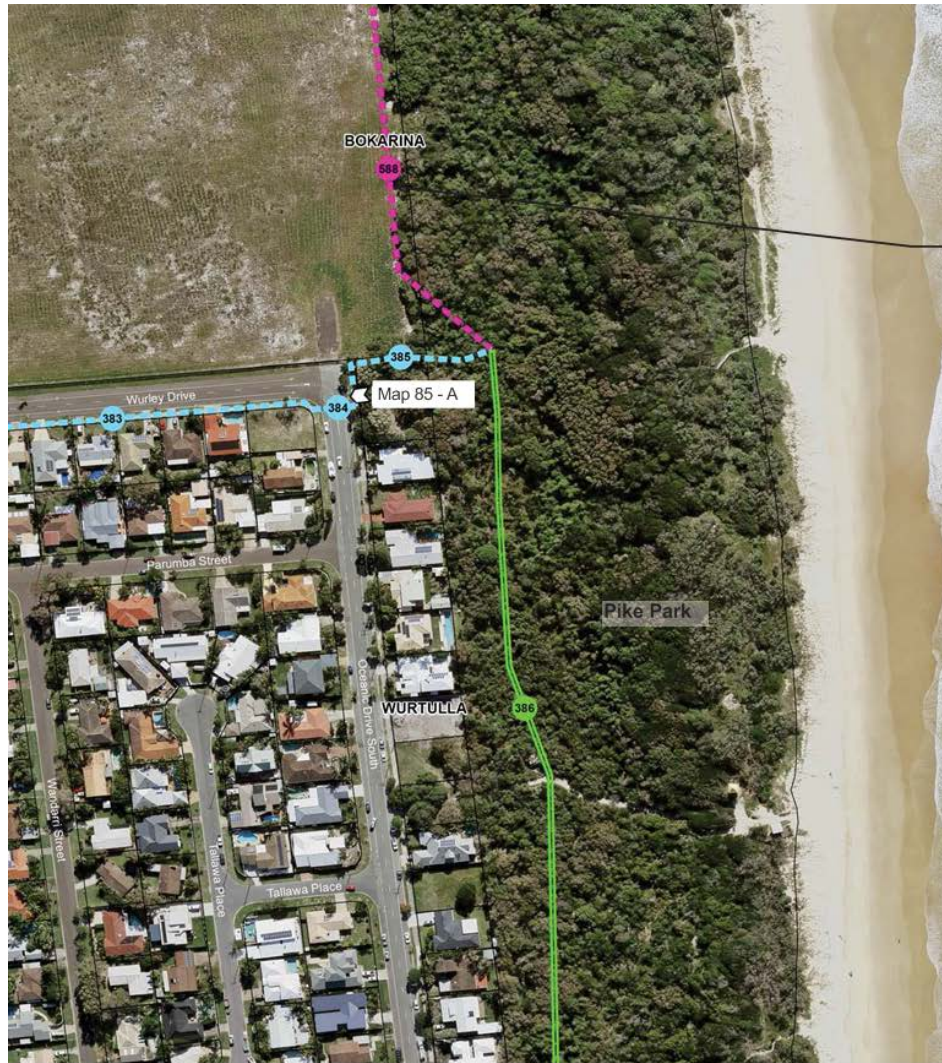


COASTAL PATHWAY MASTER PLAN Appendix A

Scale 1: 2000 @ A3
 0 20 40 60 80 100m

DRAFT B
 2016

Map 84



Map 85 - A
 Indicative pathway alignment -
 subject to approved master plan



Key Plan

Coastal Pathway Category

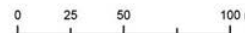
- Completed
- 2.4 - 2.9m, Low Priority
- Less than 2.4m, High Priority
- Less than 2.4m, Medium Priority
- Less than 2.4m, Low Priority
- - - Temporary Link

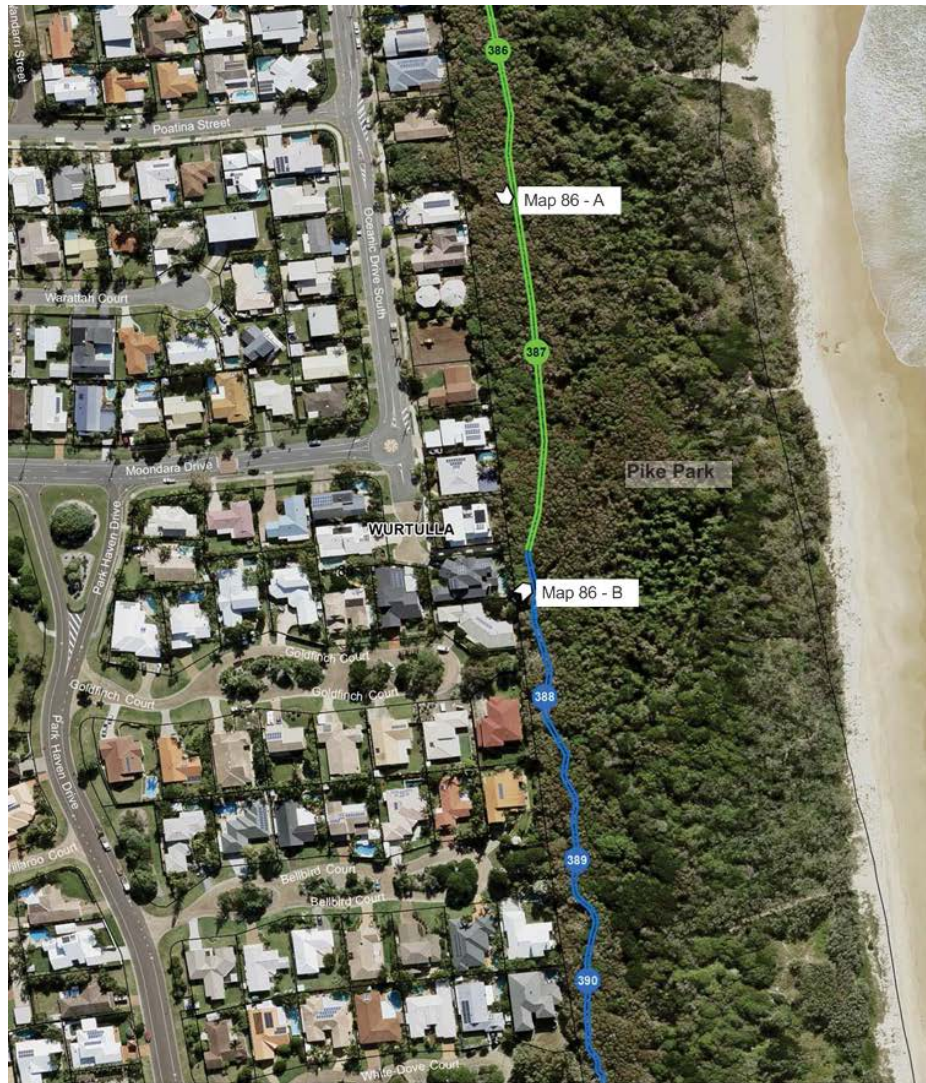
Missing Links Priority

- - - High
- - - Low
- - - Long Term Planning Option

Property Boundaries

📍 Geotagged Photos





Key Plan

Coastal Pathway Category

- Completed
- 2.4 - 2.9m, Low Priority
- Less than 2.4m, High Priority
- Less than 2.4m, Medium Priority
- Less than 2.4m, Low Priority
- - - Temporary Link

Missing Links Priority

- - - High
- - - Low
- - - Long Term Planning Option
- Property Boundaries
- Geotagged Photos

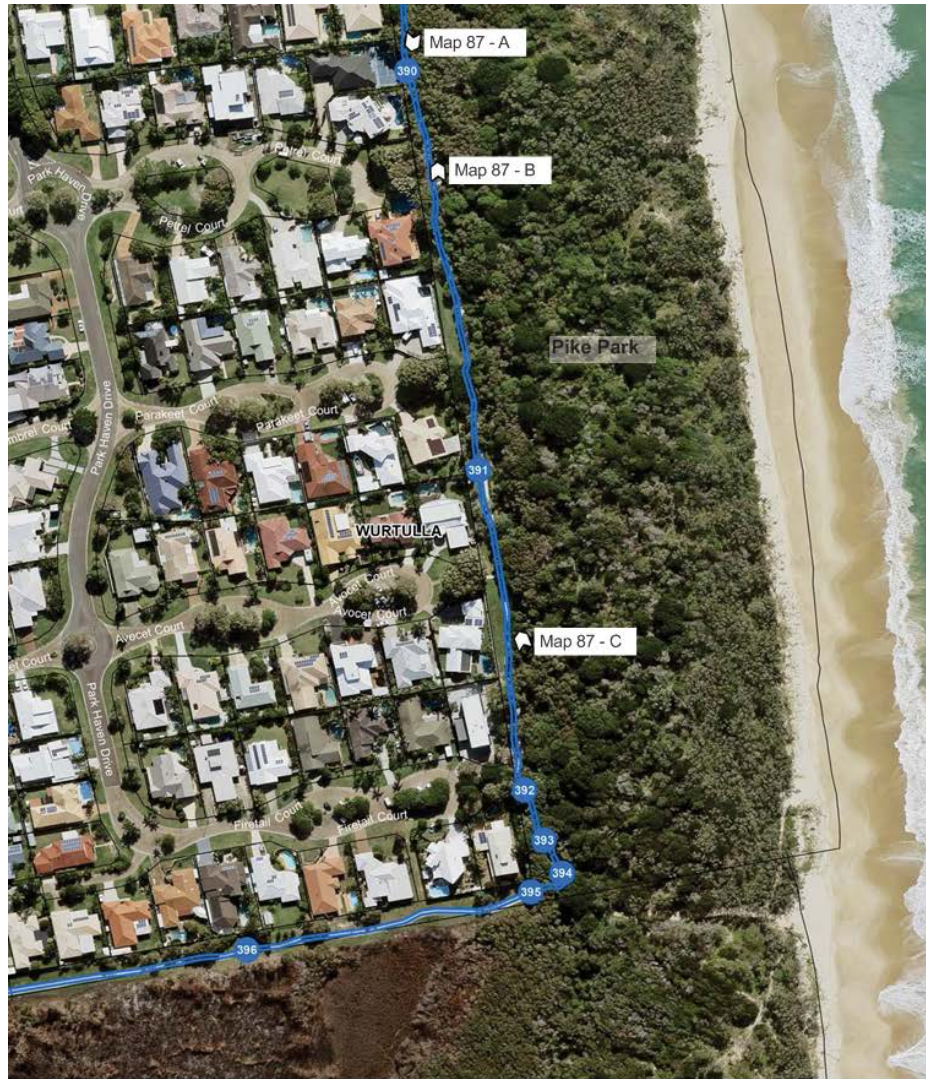


COASTAL PATHWAY MASTER PLAN Appendix A

Scale 1: 2000 @ A3
 0 20 40 60 80 100m

DRAFT B
 2016

Map 86



Key Plan

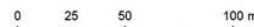
Coastal Pathway Category

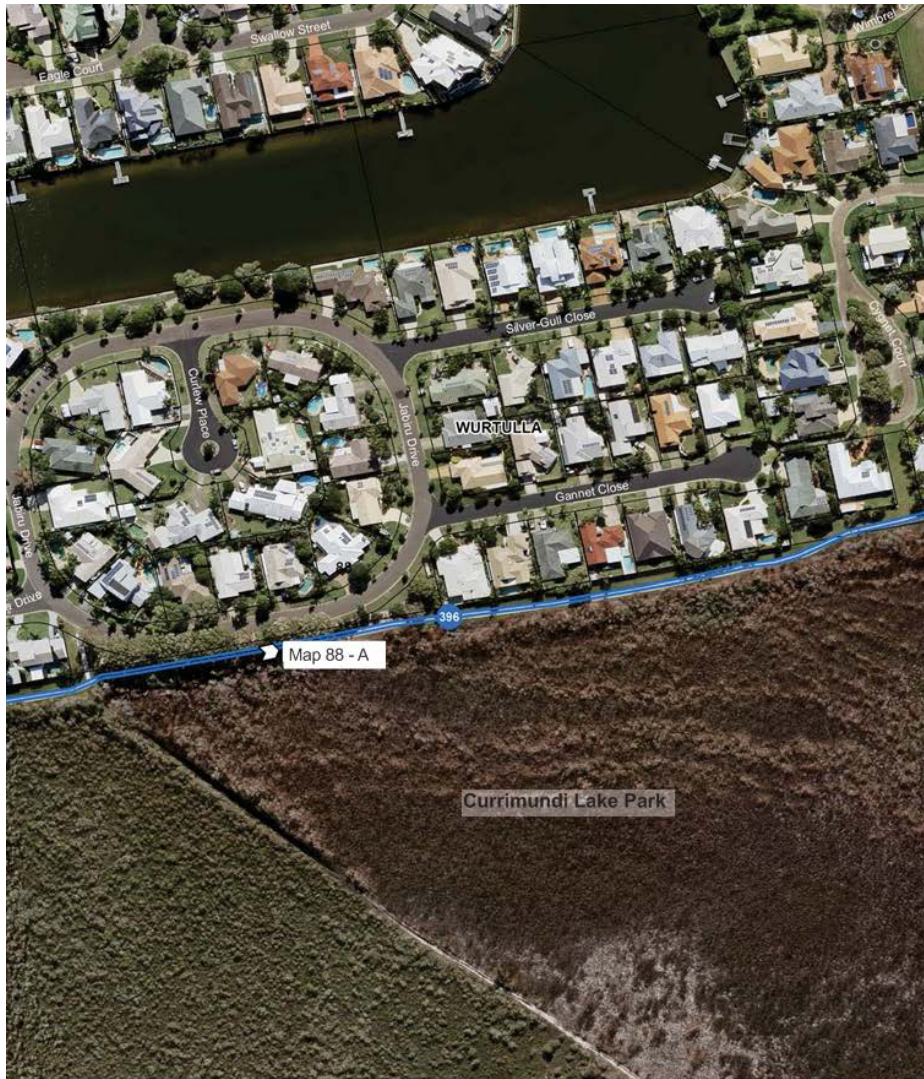
- Completed
- 2.4 - 2.9m, Low Priority
- Less than 2.4m, High Priority
- Less than 2.4m, Medium Priority
- Less than 2.4m, Low Priority
- - - Temporary Link

Missing Links Priority

- - - High
- - - Low
- - - Long Term Planning Option

- Property Boundaries
- Geotagged Photos





Map 88 - A



Key Plan

Coastal Pathway Category

- Completed
- 2.4 - 2.9m, Low Priority
- Less than 2.4m, High Priority
- Less than 2.4m, Medium Priority
- Less than 2.4m, Low Priority
- Temporary Link

Missing Links Priority

- High
- Low
- Long Term Planning Option
- Property Boundaries
- Geotagged Photos

0 25 50 100 m

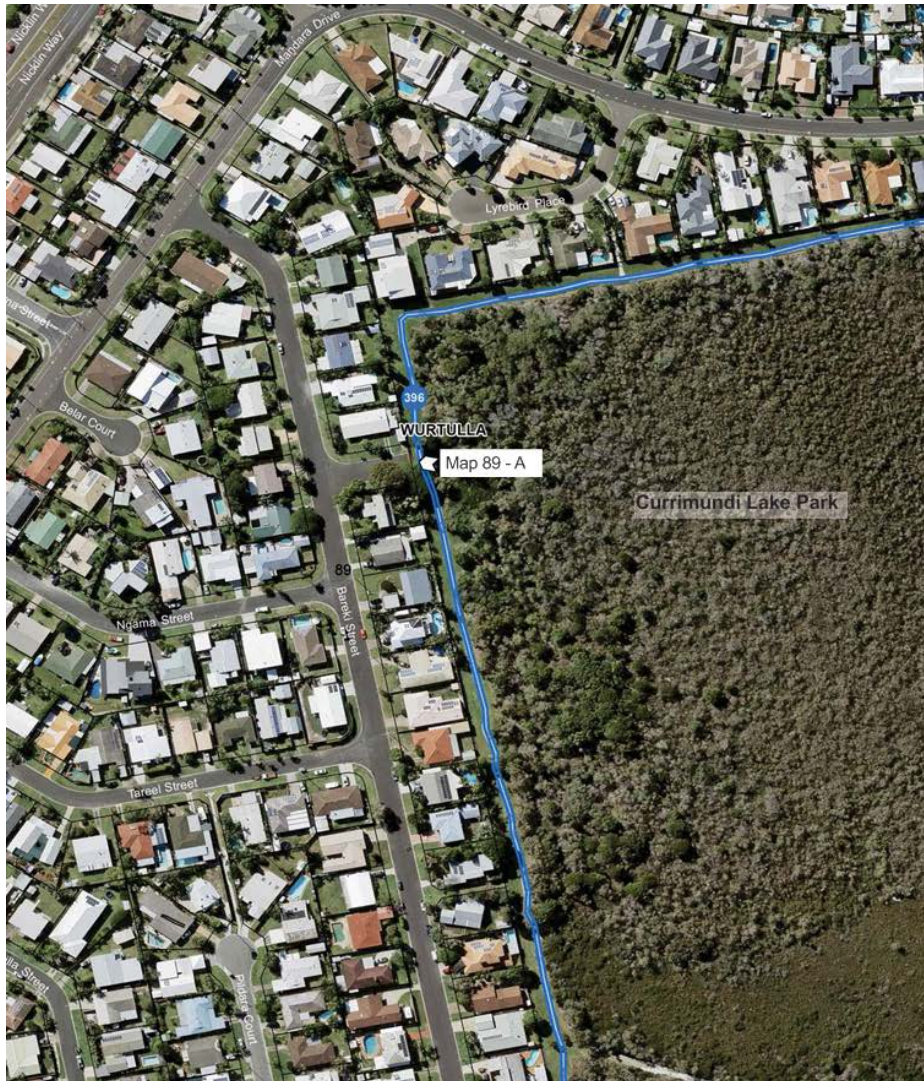


COASTAL PATHWAY MASTER PLAN Appendix A

Scale 1: 2000 @ A3
 0 20 40 60 80 100m

DRAFT B
 2016

Map 88



Map 89 - A



Key Plan

Coastal Pathway Category

- Completed
- 2.4 - 2.9m, Low Priority
- Less than 2.4m, High Priority
- Less than 2.4m, Medium Priority
- Less than 2.4m, Low Priority
- Temporary Link

Missing Links Priority

- High
- Low
- Long Term Planning Option
- Property Boundaries
- Geotagged Photos

0 25 50 100 m



COASTAL PATHWAY MASTER PLAN Appendix A

Scale 1: 2000 @ A3
 0 20 40 60 80 100m

DRAFT B
 2016

Map 89



Map 90 - A



Map 90 - B



Map 90 - C



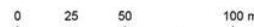
Key Plan

Coastal Pathway Category

- Completed
- 2.4 - 2.9m, Low Priority
- Less than 2.4m, High Priority
- Less than 2.4m, Medium Priority
- Less than 2.4m, Low Priority
- - - Temporary Link

Missing Links Priority

- - - High
- - - Low
- - - Long Term Planning Option
- Property Boundaries
- Geotagged Photos





Map 91 - A



Map 91 - B



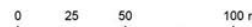
Key Plan

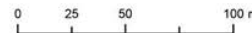
Coastal Pathway Category

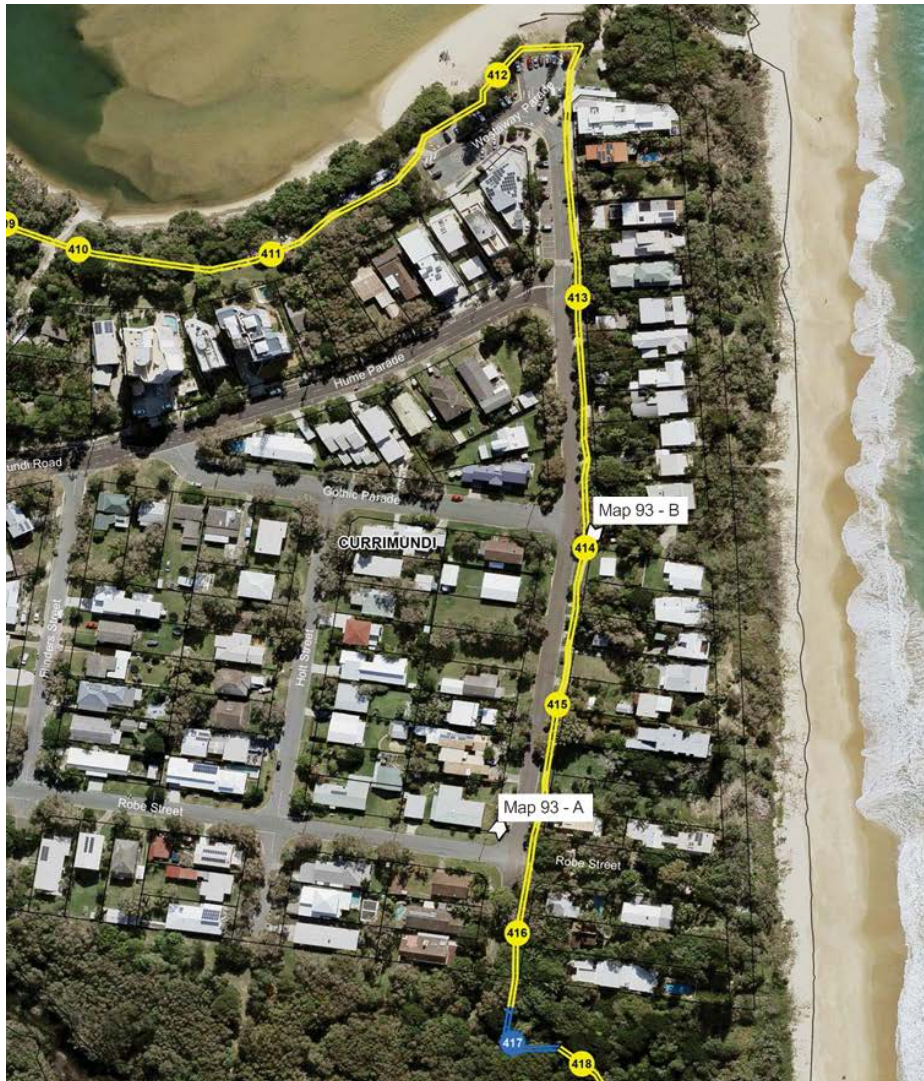
- Completed
- 2.4 - 2.9m, Low Priority
- Less than 2.4m, High Priority
- Less than 2.4m, Medium Priority
- Less than 2.4m, Low Priority
- Temporary Link

Missing Links Priority

- High
- Low
- Long Term Planning Option
- Property Boundaries
- Geotagged Photos







Map 93 - A



Map 93 - B



Key Plan

Coastal Pathway Category

- Completed
- 2.4 - 2.9m, Low Priority
- Less than 2.4m, High Priority
- Less than 2.4m, Medium Priority
- Less than 2.4m, Low Priority
- - - Temporary Link

Missing Links Priority

- - - High
- - - Low
- - - Long Term Planning Option
- Property Boundaries
- Geotagged Photos





Map 94 - A



Map 94 - B



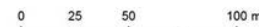
Key Plan

Coastal Pathway Category

- Completed
- 2.4 - 2.9m, Low Priority
- Less than 2.4m, High Priority
- Less than 2.4m, Medium Priority
- Less than 2.4m, Low Priority
- - - Temporary Link

Missing Links Priority

- - - High
- - - Low
- - - Long Term Planning Option
- Property Boundaries
- Geotagged Photos

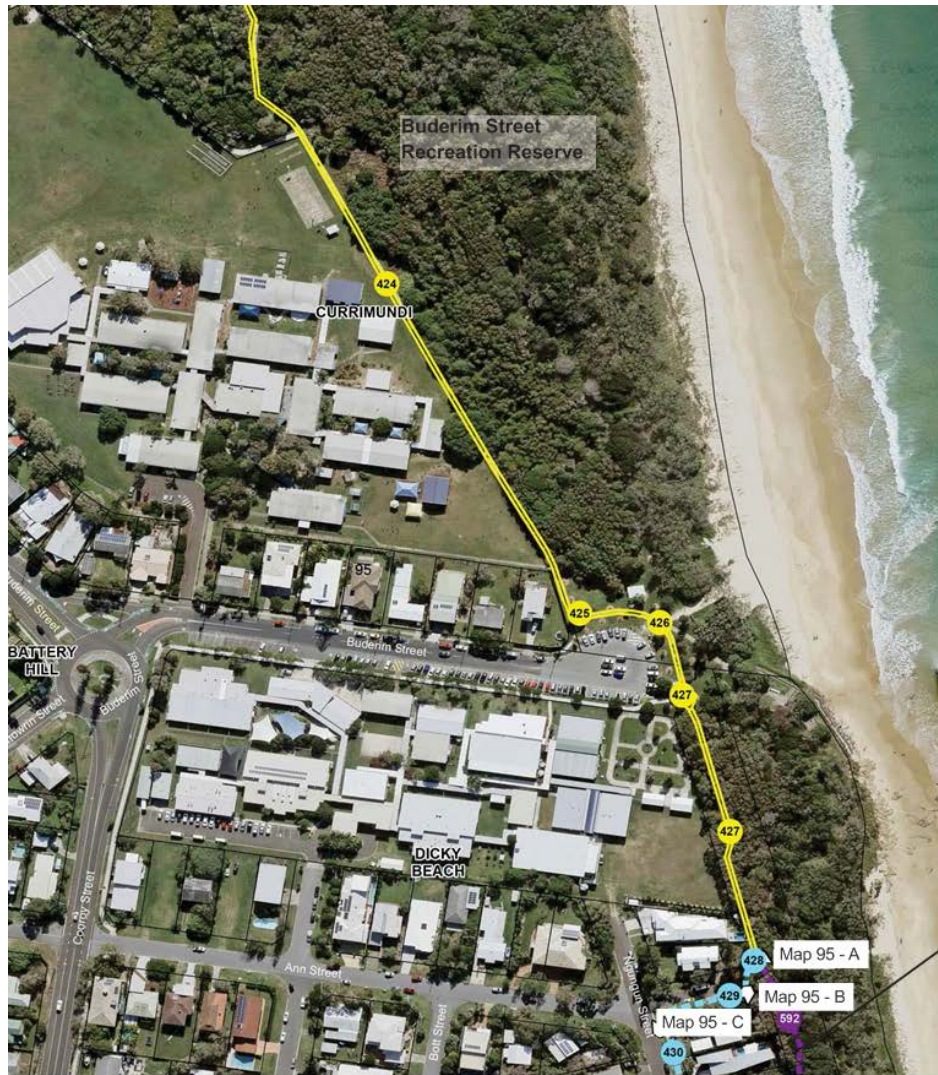


COASTAL PATHWAY MASTER PLAN Appendix A

Scale 1: 2000 @ A3
 0 20 40 60 80 100m

DRAFT B
 2016

Map 94



Map 95 - A



Map 95 - B



Map 95 - C



Key Plan

Coastal Pathway Category

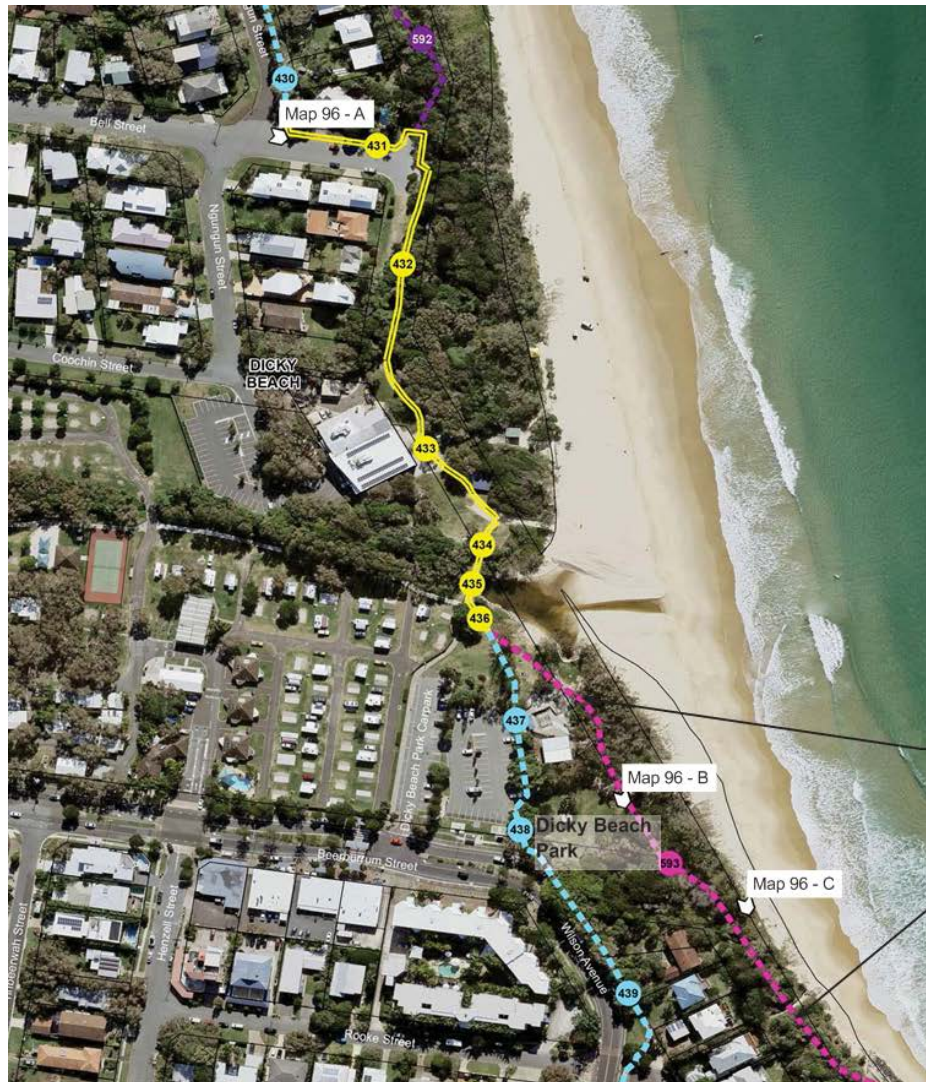
- Completed
- 2.4 - 2.9m, Low Priority
- Less than 2.4m, High Priority
- Less than 2.4m, Medium Priority
- Less than 2.4m, Low Priority
- - - Temporary Link

Missing Links Priority

- - - High
- - - Low
- - - Long Term Planning Option
- Property Boundaries
- Geotagged Photos

Indicative pathway alignment -
 subject to detail site investigation





Map 96 - A



Map 96 - B



Map 96 - C

Coastal pathway - alignment subject to master plan

Indicative pathway alignment - subject to detail site investigation



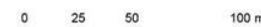
Key Plan

Coastal Pathway Category

- Completed
- 2.4 - 2.9m, Low Priority
- Less than 2.4m, High Priority
- Less than 2.4m, Medium Priority
- Less than 2.4m, Low Priority
- - - Temporary Link

Missing Links Priority

- - - High
- - - Low
- - - Long Term Planning Option
- Property Boundaries
- Geotagged Photos





Map 97 - A



Map 97 - B



Map 97 - C



Key Plan

Coastal Pathway Category

- Completed
- 2.4 - 2.9m, Low Priority
- Less than 2.4m, High Priority
- Less than 2.4m, Medium Priority
- Less than 2.4m, Low Priority
- - - Temporary Link

Missing Links Priority

- - - High
- - - Low
- - - Long Term Planning Option
- Property Boundaries
- Geotagged Photos

Indicative pathway alignment - subject to detail site investigation



Map 98 - A

Map 98 - A



Key Plan

Coastal Pathway Category

- Completed
- 2.4 - 2.9m, Low Priority
- Less than 2.4m, High Priority
- Less than 2.4m, Medium Priority
- Less than 2.4m, Low Priority
- - - Temporary Link

Missing Links Priority

- - - High
- - - Low
- - - Long Term Planning Option
- Property Boundaries
- Geotagged Photos

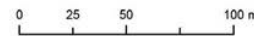


COASTAL PATHWAY MASTER PLAN Appendix A

Scale 1: 2000 @ A3
 0 20 40 60 80 100m

DRAFT B
 2016

Map 98





Map 100 - A



Map 100 - B



Key Plan

Coastal Pathway Category

- Completed
- 2.4 - 2.9m, Low Priority
- Less than 2.4m, High Priority
- Less than 2.4m, Medium Priority
- Less than 2.4m, Low Priority
- Temporary Link

Missing Links Priority

- High
- Low
- Long Term Planning Option
- Property Boundaries
- Geotagged Photos





Map 101 - A

Long term planning option - indicative pathway alignment subject to future investigation

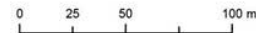


Key Plan
 Coastal Pathway Category

- Completed
- 2.4 - 2.9m, Low Priority
- Less than 2.4m, High Priority
- Less than 2.4m, Medium Priority
- Less than 2.4m, Low Priority

Missing Links Priority

- High
- Low
- Long Term Planning Option
- Property Boundaries
- Geotagged Photos





Long term planning option - indicative pathway alignment subject to future investigation



Key Plan

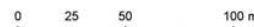
Coastal Pathway Category

- Completed
- 2.4 - 2.9m, Low Priority
- Less than 2.4m, High Priority
- Less than 2.4m, Medium Priority
- Less than 2.4m, Low Priority

Missing Links Priority

- - - High
- - - Low
- - - Long Term Planning Option

- Property Boundaries
- Geotagged Photos

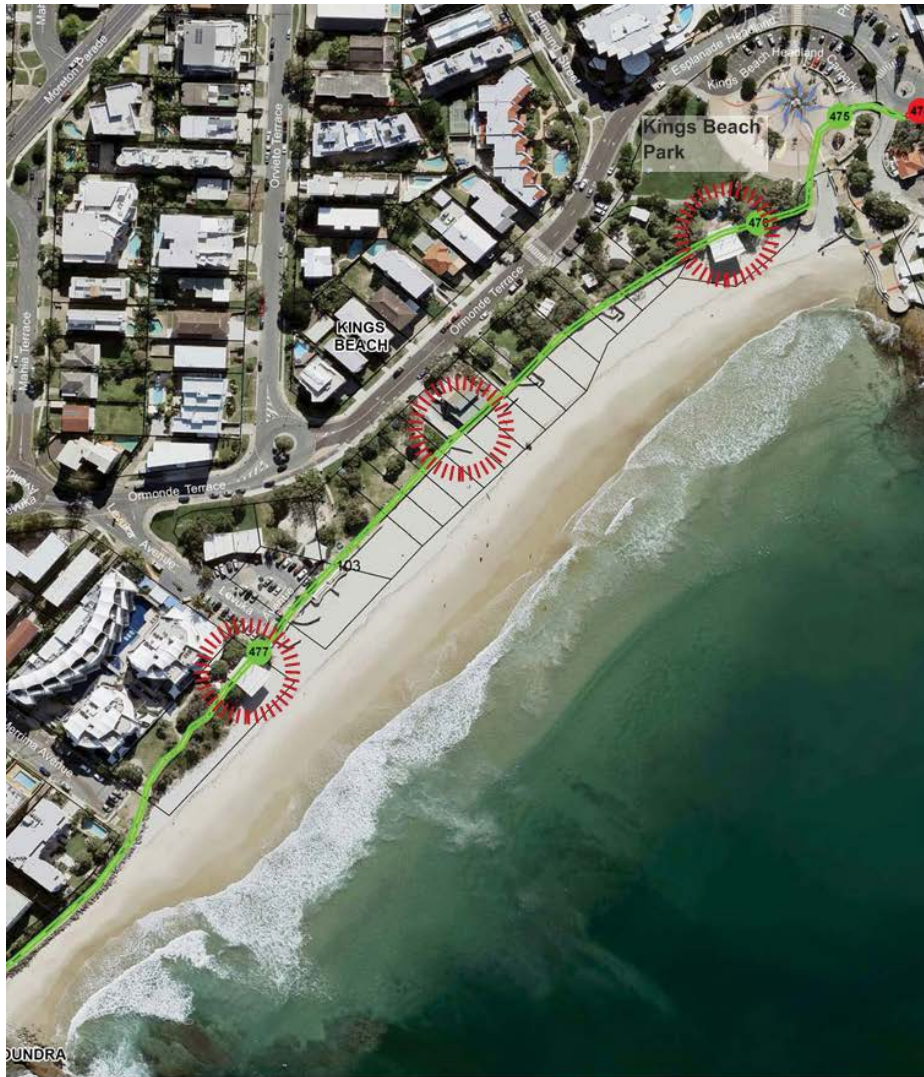


COASTAL PATHWAY MASTER PLAN Appendix A

Scale 1: 2000 @ A3
 0 20 40 60 80 100m

DRAFT B
 2016

Map 102



Key Plan

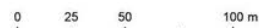
Coastal Pathway Category

- Completed
- 2.4 - 2.9m, Low Priority
- Less than 2.4m, High Priority
- Less than 2.4m, Medium Priority
- Less than 2.4m, Low Priority
- Temporary Link

Missing Links Priority

- High
- Low
- Long Term Planning Option
- Property Boundaries
- Geotagged Photos

Conflict points

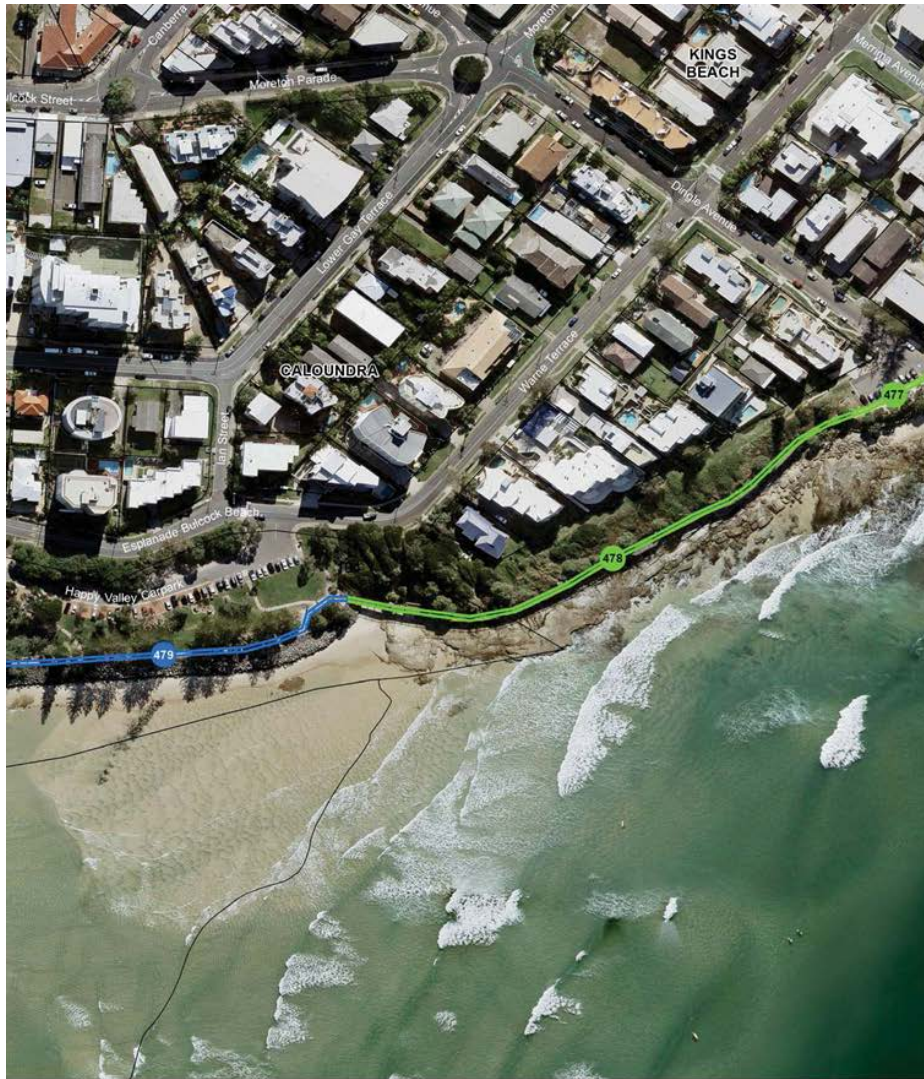


COASTAL PATHWAY MASTER PLAN Appendix A

Scale 1: 2000 @ A3
 0 20 40 60 80 100m

DRAFT B
 2016

Map 103



Key Plan

Coastal Pathway Category

- Completed
- 2.4 - 2.9m, Low Priority
- Less than 2.4m, High Priority
- Less than 2.4m, Medium Priority
- Less than 2.4m, Low Priority
- - - Temporary Link

Missing Links Priority

- - - High
- - - Low
- - - Long Term Planning Option
- Property Boundaries
- Geotagged Photos

0 25 50 100 m

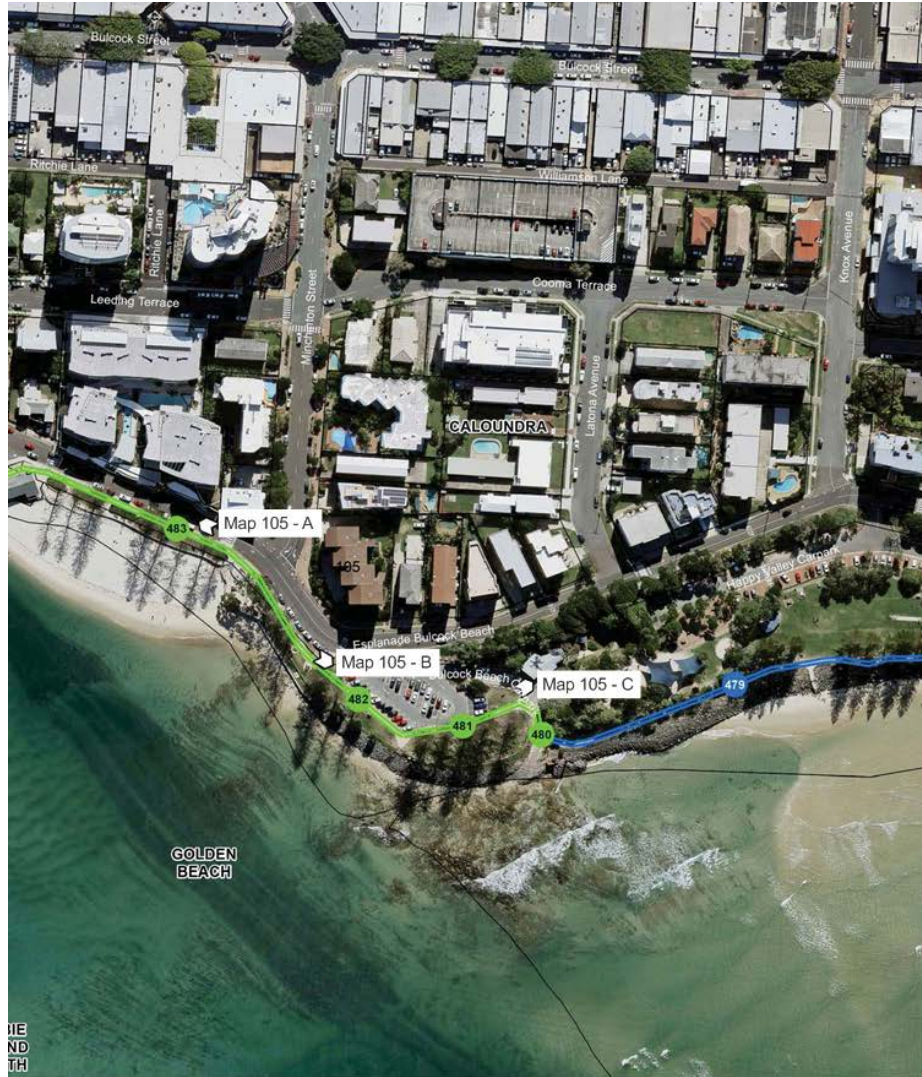


COASTAL PATHWAY MASTER PLAN Appendix A

Scale 1: 2000 @ A3
 0 20 40 60 80 100m

DRAFT B
 2016

Map 104



Map 105 - A



Map 105 - B



Map 105 - C



Key Plan

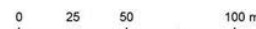
Coastal Pathway Category

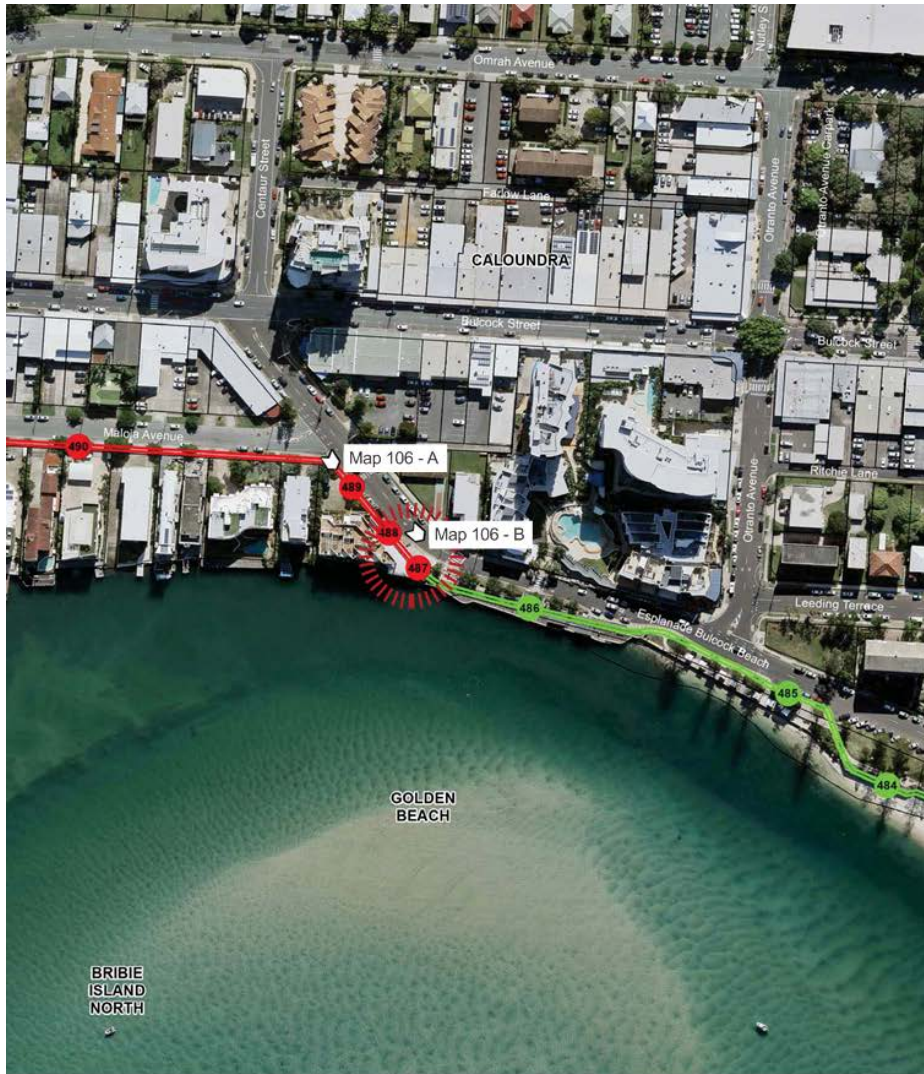
- Completed
- 2.4 - 2.9m, Low Priority
- Less than 2.4m, High Priority
- Less than 2.4m, Medium Priority
- Less than 2.4m, Low Priority
- Temporary Link

Missing Links Priority

- High
- Low
- Long Term Planning Option

- Property Boundaries
- Geotagged Photos





Map 106 - A



Map 106 - B



Key Plan

Coastal Pathway Category

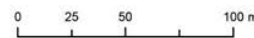
- Completed
- 2.4 - 2.9m, Low Priority
- Less than 2.4m, High Priority
- Less than 2.4m, Medium Priority
- Less than 2.4m, Low Priority

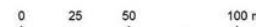
Missing Links Priority

- High
- Low
- Long Term Planning Option

- Property Boundaries
- Geotagged Photos

Conflict points





COASTAL PATHWAY MASTER PLAN Appendix A

Scale 1: 2000 @ A3
 0 20 40 60 80 100m

DRAFT B
 2016

Map 107



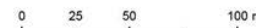
Key Plan

Coastal Pathway Category

- Completed
- 2.4 - 2.9m, Low Priority
- Less than 2.4m, High Priority
- Less than 2.4m, Medium Priority
- Less than 2.4m, Low Priority
- - - Temporary Link

Missing Links Priority

- - - High
- - - Low
- - - Long Term Planning Option
- Property Boundaries
- Geotagged Photos

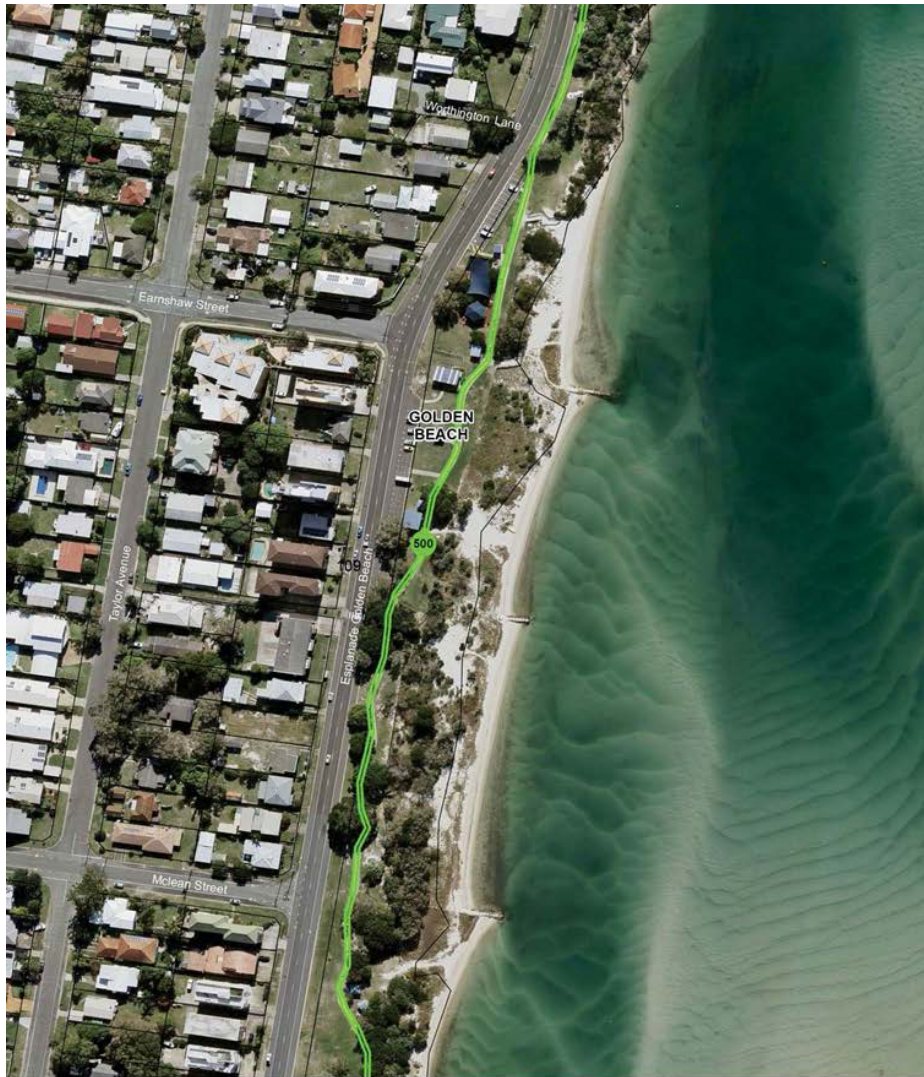


COASTAL PATHWAY MASTER PLAN Appendix A

Scale 1: 2000 @ A3
 0 20 40 60 80 100m

DRAFT B
 2016

Map 108



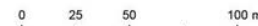
Key Plan

Coastal Pathway Category

- Completed
- 2.4 - 2.9m, Low Priority
- Less than 2.4m, High Priority
- Less than 2.4m, Medium Priority
- Less than 2.4m, Low Priority
- Temporary Link

Missing Links Priority

- High
- Low
- Long Term Planning Option
- Property Boundaries
- Geotagged Photos



COASTAL PATHWAY MASTER PLAN Appendix A

Scale 1: 2000 @ A3
 0 20 40 60 80 100m

DRAFT B
 2016

Map 109



Map 110 - A



Key Plan

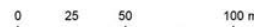
Coastal Pathway Category

- Completed
- 2.4 - 2.9m, Low Priority
- Less than 2.4m, High Priority
- Less than 2.4m, Medium Priority
- Less than 2.4m, Low Priority
- Temporary Link

Missing Links Priority

- High
- Low
- Long Term Planning Option

- Property Boundaries
- Geotagged Photos





Map 111 - A



Map 111 - B



Key Plan

Coastal Pathway Category

- Completed
- 2.4 - 2.9m, Low Priority
- Less than 2.4m, High Priority
- Less than 2.4m, Medium Priority
- Less than 2.4m, Low Priority
- - - Temporary Link

Missing Links Priority

- - - High
- - - Low
- - - Long Term Planning Option
- Property Boundaries
- Geotagged Photos

0 25 50 100 m



COASTAL PATHWAY MASTER PLAN Appendix A

Scale 1: 2000 @ A3
 0 20 40 60 80 100m

DRAFT B
 2016

Map 111



Map 112 - A



Map 112 - B



Map 112 - C



Key Plan

Coastal Pathway Category

- Completed
- 2.4 - 2.9m, Low Priority
- Less than 2.4m, High Priority
- Less than 2.4m, Medium Priority
- Less than 2.4m, Low Priority
- - - Temporary Link

Missing Links Priority

- - - High
- - - Low
- - - Long Term Planning Option
- Property Boundaries
- Geotagged Photos

Upgrade to bridge subject to future design investigation





Map 113 - A



Map 113 - B



Map 113 - C



Key Plan

Coastal Pathway Category

- Completed
- 2.4 - 2.9m, Low Priority
- Less than 2.4m, High Priority
- Less than 2.4m, Medium Priority
- Less than 2.4m, Low Priority
- - - Temporary Link




Missing Links Priority

- - - High
- - - Low
- - - Long Term Planning Option
- Property Boundaries
- Geotagged Photos



Key Plan

Coastal Pathway Category

-  Completed
-  2.4 - 2.9m, Low Priority
-  Less than 2.4m, High Priority
-  Less than 2.4m, Medium Priority
-  Less than 2.4m, Low Priority
-  Temporary Link

Missing Links Priority

-  High
-  Low
-  Long Term Planning Option
-  Property Boundaries
-  Geotagged Photos



COASTAL PATHWAY MASTER PLAN Appendix A

Scale 1: 2000 @ A3
 0 20 40 60 80 100m

DRAFT B
 2016

Map 114



IMG_8449

Future link to Pelican Waters



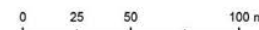
Key Plan

Coastal Pathway Category

- Completed
- 2.4 - 2.9m, Low Priority
- Less than 2.4m, High Priority
- Less than 2.4m, Medium Priority
- Less than 2.4m, Low Priority
- - - Temporary Link

Missing Links Priority

- - - High
- - - Low
- - - Long Term Planning Option
- Property Boundaries
- Geotagged Photos

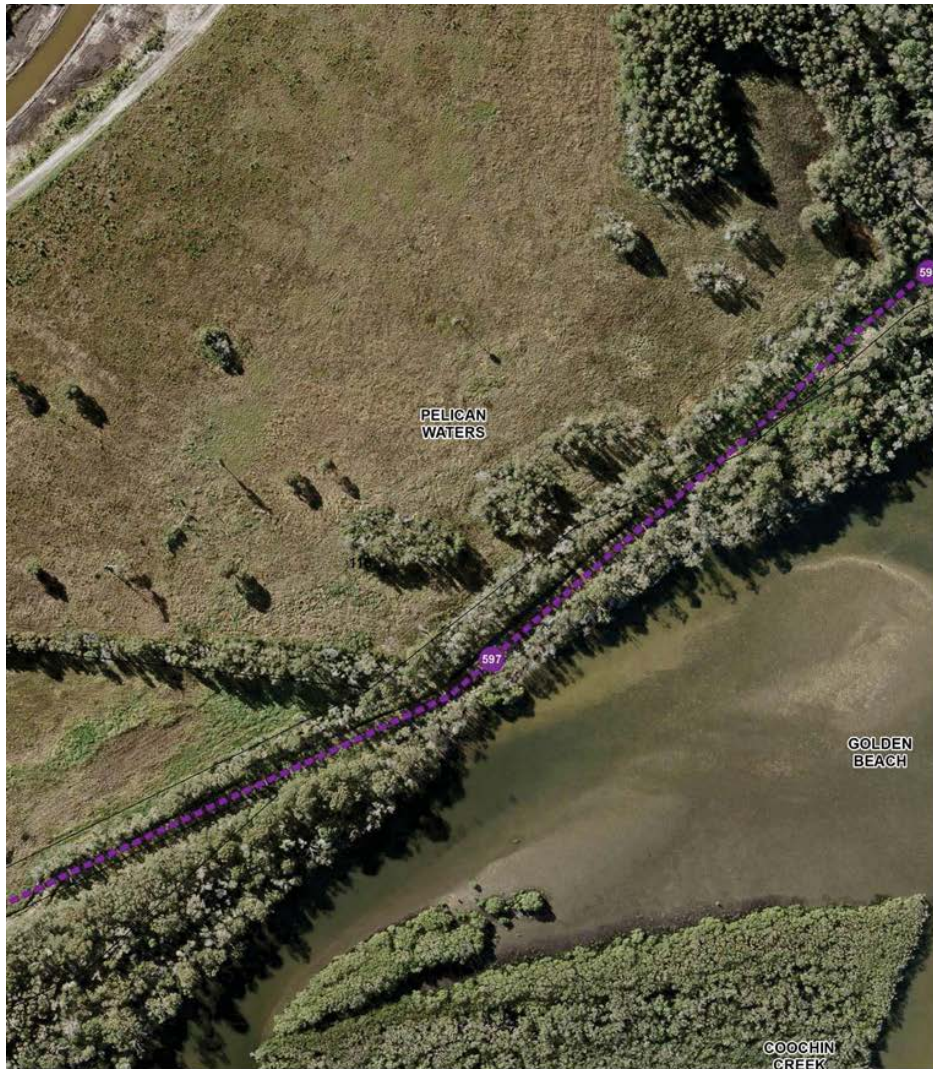


COASTAL PATHWAY MASTER PLAN Appendix A

Scale 1: 2000 @ A3
 0 20 40 60 80 100m

DRAFT B
 2016

Map 115



Coastal Pathway to be completed as part of staged development of Pelican Waters



Key Plan

Coastal Pathway Category

- Completed
- 2.4 - 2.9m, Low Priority
- Less than 2.4m, High Priority
- Less than 2.4m, Medium Priority
- Less than 2.4m, Low Priority
- Temporary Link

Missing Links Priority

- High
- Low
- Long Term Planning Option

- Property Boundaries
- Geotagged Photos



COASTAL PATHWAY MASTER PLAN Appendix A

Scale 1: 2000 @ A3
 0 20 40 60 80 100m

DRAFT B
 2016

Map 116



Coastal Pathway to be completed as part of staged development of Pelican Waters



Key Plan

Coastal Pathway Category

- Completed
- 2.4 - 2.9m, Low Priority
- Less than 2.4m, High Priority
- Less than 2.4m, Medium Priority
- Less than 2.4m, Low Priority
- Temporary Link

Missing Links Priority

- High
- Low
- Long Term Planning Option
- Property Boundaries
- Geotagged Photos

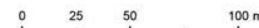
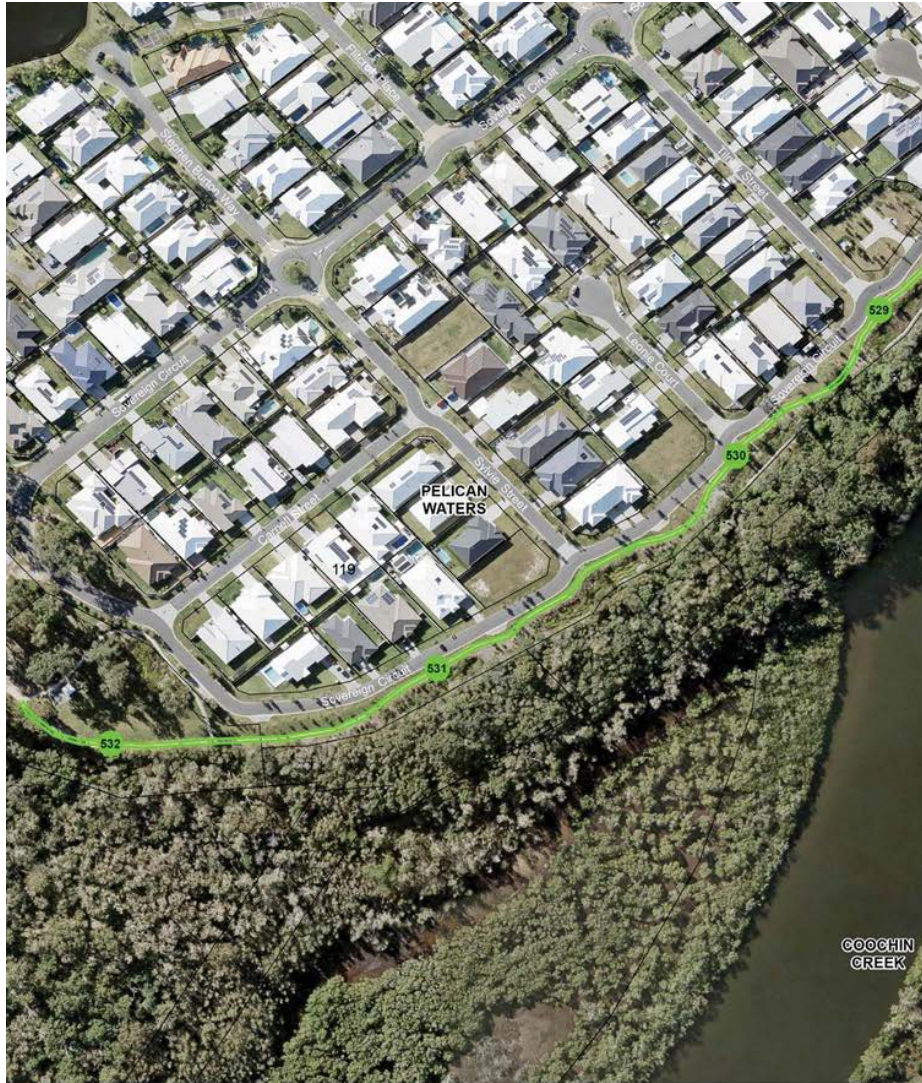


COASTAL PATHWAY MASTER PLAN Appendix A

Scale 1: 2000 @ A3
 0 20 40 60 80 100m

DRAFT B
 2016

Map 117



COASTAL PATHWAY MASTER PLAN Appendix A

Scale 1: 2000 @ A3
 0 20 40 60 80 100m

DRAFT B
 2016

Map 119



APPENDIX A

Coastal Pathway Master Plan Maps

DRAFT B July 2016

COASTAL PATHWAY MASTER PLAN

© Sunshine Coast Regional Council 2009-current.
Sunshine Coast Council™ is a registered trademark
of Sunshine Coast Regional Council.
www.sunshinecoast.qld.gov.au
mail@sunshinecoast.qld.gov.au
T 07 5475 7272 F 07 5475 7277
Locked Bag 72 Sunshine Coast Mail Centre Qld 4560



