



# Landsborough

## Street tree strategy

### Description of plan area

Sheltered in the foothills of the Blackall Range and located 7km from Beerwah, the Landsborough plan area consists of 880 hectares of rural and low density rural residential living and a small historic hinterland village. Prior to the arrival of the Europeans, the area was reported to be a site of large social gatherings. Following white settlement the township of Landsborough had its beginnings as a Cobb & Co rest stop, later growing into the town it is today as an outcome of the combined impacts of the Gympie gold rush, timber getting era and construction of the North Coast rail line.

A convenient rest stop for tourists travelling on the scenic routes of Steve Irwin Way and Landsborough–Maleny Road, and tourist destination in its own right, the town has retained many of its natural values including a significant indigenous site (axe grinding) as well as heritage values evident in the historic form of the built landscape.

### Trees and landscape character

Landsborough is characterised by both the natural landscape character of its hinterland location (eucalypt, rainforest and paperbark plant communities) and the cultured character of a well-preserved historic town. Formal avenues of Crow's ash, ivory curl and white oak trees run through the town's centre while leopard, flame, fire wheel and jacaranda add colour and contrast to the townscape.

The natural landscape remains a key feature of the plan area with the most noteworthy streetscape representation being the impressive stand of eucalypts lining Pioneer Park at the gateway to the town.

Natural vegetation communities include eucalypt woodland and tall open forest with blue gum, blackbutt, tallowwood, flooded gum, pink bloodwood, and stringybark dominant eucalypts of the area. Turpentine and rough-barked apple are other significant canopy species of the naturally occurring open forest/woodland plant communities. Paperbark forest was common in areas of periodic inundation with swamp box and swamp sheoak also featuring. Pockets of thicker, wetter closed forest (notophyll vine/wet sclerophyll) were also present. Remnants remain in the Mellum Creek corridor where weeping lilly pilly, giant water gum, sand paper, Fraser Island and Moreton Bay figs, quandong, pepperberry, purple and brown laurels and black bean are amongst the locally important species present.

### Canopy cover

Canopy cover within the plan area is above-average for the Sunshine Coast with statistics reporting 50% tree cover across all lands and 38% within road reserve. Good street tree occupancy is evident in the centre of town with few vacant sites suitable for infill planting.

### Major opportunities and constraints

There are many opportunities for the establishment of additional shade trees in the wider plan area on account of wide road verges (especially along Caloundra Street, the town's major entry road).

Landmark planting opportunities are evident at the intersection of Steve Irwin Way and Caloundra Streets, the intersection of Railway Street and Steve Irwin Way as well as the Gympie Street South and Landsborough–Maleny Road intersection.

The pedestrian friendly nature of the town presents opportunity to enhance feeder street connections and shade tree plantings to footpaths along Mill Street. Other shade tree planting opportunities have been identified in and around the local state school.

Good potential exists to bolster accent and character tree plantings in town (for example around the Landsborough Museum and Arts Community and Heritage building).

A number of sites adjacent to the footpath on the south side of Steve Irwin Way would benefit from shade or feature tree plantings and appear to be capable of supporting large canopy trees.

An opportunity to buffer Skippy Park and increase amenity along Old Landsborough Road with extension of the existing street tree avenue has been identified however a power line-friendly species will need to be used.

Residential estates east of Steve Irwin Way (Wattlebird, Bowerbird and White Gum estate) offer the best *Adopt A Street Tree Program* potential.

With several intersection upgrades earmarked for Steve Irwin Way, state control (TMR) of this road corridor and duplication of the rail another significant infrastructure project in the pipeline, investigation of potential planting sites mapped in these locations may need to be postponed until after finalisation of these upgrades.

The permanent flying fox roost at Vidler Court forms a constraint to street tree planting. The planting of preferred flying-fox foraging species in the streets immediately surrounding the reserve is considered a risk to the comfort of already impacted residents with the roost be retained and managed in situ.

### Street tree planting strategies

Street trees highlight and enhance the heritage character of the town with species from signature palettes used for infill planting and existing planting themes followed.

Natural character is reinforced in landmark and entryway plantings including the establishment of street trees in natural character intersection nodes, shade plantings to the Steve Irwin Way footpath and reinforcement of the stately avenue of eucalypts in and around Pioneer Park.

Shade is provided to footpaths around the local school and major pedestrian routes in and around the township.

Local ecological linkages (Mellum and Little Rocky Creeks) are buffered with indigenous street tree plantings where these natural areas intersect with local streets.

Street tree planting partnerships with local residents are encouraged to build canopy and increase amenity in local streets where street tree occupancy is presently low.

New street tree plantings within a 20m buffer of the permanent flying fox roost at Vidler Court are to consist of non flying-fox attractant species (see planting palette in *Part A: Street Tree Master Plan Report: Species Selection Guidelines*).

# Street tree palettes

## Signature trees

### Feature and avenue trees

*Buckinghamia celcissima* (ivory curl)  
*Caesalpinia ferrea* (leopard tree) (where existing only)  
*Corymbia intermedia* (pink bloodwood)  
*Delonix regia* (poinciana) (where existing only)  
*Elaeocarpus grandis* (blue quandong)  
*Eucalyptus microcorys* (tallowwood)  
*Eucalyptus pilularis* (blackbutt)  
*Eucalyptus tereticornis* (blue/forest red gum)  
*Ficus macrophylla* (Moreton Bay fig)  
*Flindersia australis* (Crow's ash)  
*Flindersia bennettiana* (Bennett's ash)  
*Peltophorum pterocarpum* (yellow flame)  
*Waterhousia floribunda* (syn. *Syzygium floribundum*) (weeping lilly pilly)

See also *Locally native species for natural character features palettes* for use in appropriate locations.

### Trees for accent and highlights

*Archontophoenix cunninghamiana* (piccabeen palm)  
*Backhousia citriodora* (lemon myrtle)  
*Brachychiton acerifolius* (Illawarra flame tree)  
*Brachychiton discolor* (lacebark)  
*Brachychiton rupestris* (bottle tree)  
*Corymbia ptychocarpa* (swamp bloodwood)  
*Lagerstroemia archeriana* (native crepe myrtle)  
*Livistona australis* (fan palm)  
*Stenocarpus sinuatus* (firewheel)

## Trees for local streets

*Alectryon subdentatus*\* (hard alectryon) (trial locations)  
*Backhousia citriodora* (lemon myrtle)  
*Brachychiton acerifolius* (Illawarra flame tree)  
*Buckinghamia celcissima* (ivory curl)  
*Corymbia ptychocarpa* (swamp bloodwood)  
*Cryptocarya obovata* (pepperberry)  
*Cryptocarya triplinervis* (three-veined laurel)  
*Cupaniopsis parvifolia* (small-leaved tuckeroo)  
*Diospyros pentamera* \* (myrtle ebony) (trial locations)  
*Diploglottis campbellii* \*(small-leaved tamarind) (trial locations)  
*Elaeocarpus eumundii* (Eumundi quandong)  
*Elaeocarpus obovatus* (hard quandong)  
*Grevillea hilliana*\* (Hill's silky oak) (trial locations)  
*Guioa semi-glauca*\* (wild quince) (trial locations)  
*Harpullia hillii* \* (blunt leaf tulipwood)  
*Harpullia pendula* (tulipwood) (trial locations)  
*Leptospermum brachyandrum* var. *longifolia* (tea tree)  
*Lophostemon confertus* (brush box) (where existing only)  
*Olea paniculata*\* (native olive) (trial locations)  
*Planchonella pohlmaniana*\* (yellow boxwood) (trial locations)  
*Podocarpus elatus* (brown pine)  
*Tristaniopsis laurina* 'Luscious' (water gum)

## Locally native species for natural character features

### Woodland / open forest

*Allocasuarina littoralis* (black sheoak)  
*Corymbia citriodora* subsp. *citriodora* (lemon scented gum)  
*Corymbia gummifera* (red bloodwood)  
*Corymbia intermedia* (pink bloodwood)  
*Corymbia trachyphloia* (brown bloodwood)  
*Eucalyptus bancroftii* (tumbledown gum)  
*Eucalyptus creba* (narrow-leaved ironbark)  
*Eucalyptus microcorys* (tallowwood)  
*Eucalyptus seeana* (narrow-leaved red gum)  
*Eucalyptus siderophloia* (grey ironbark)  
*Eucalyptus tereticornis* (blue gum/forest red gum)  
*Eucalyptus tindaliae* (Tindale's stringybark)  
*Lophostemon confertus* (brush box)  
*Lophostemon suaveolens* (swamp box)  
*Melaleuca quinquenervia* (broad-leaved paperbark)  
*Syncarpia glomulifera* (turpentine)

### Rainforest

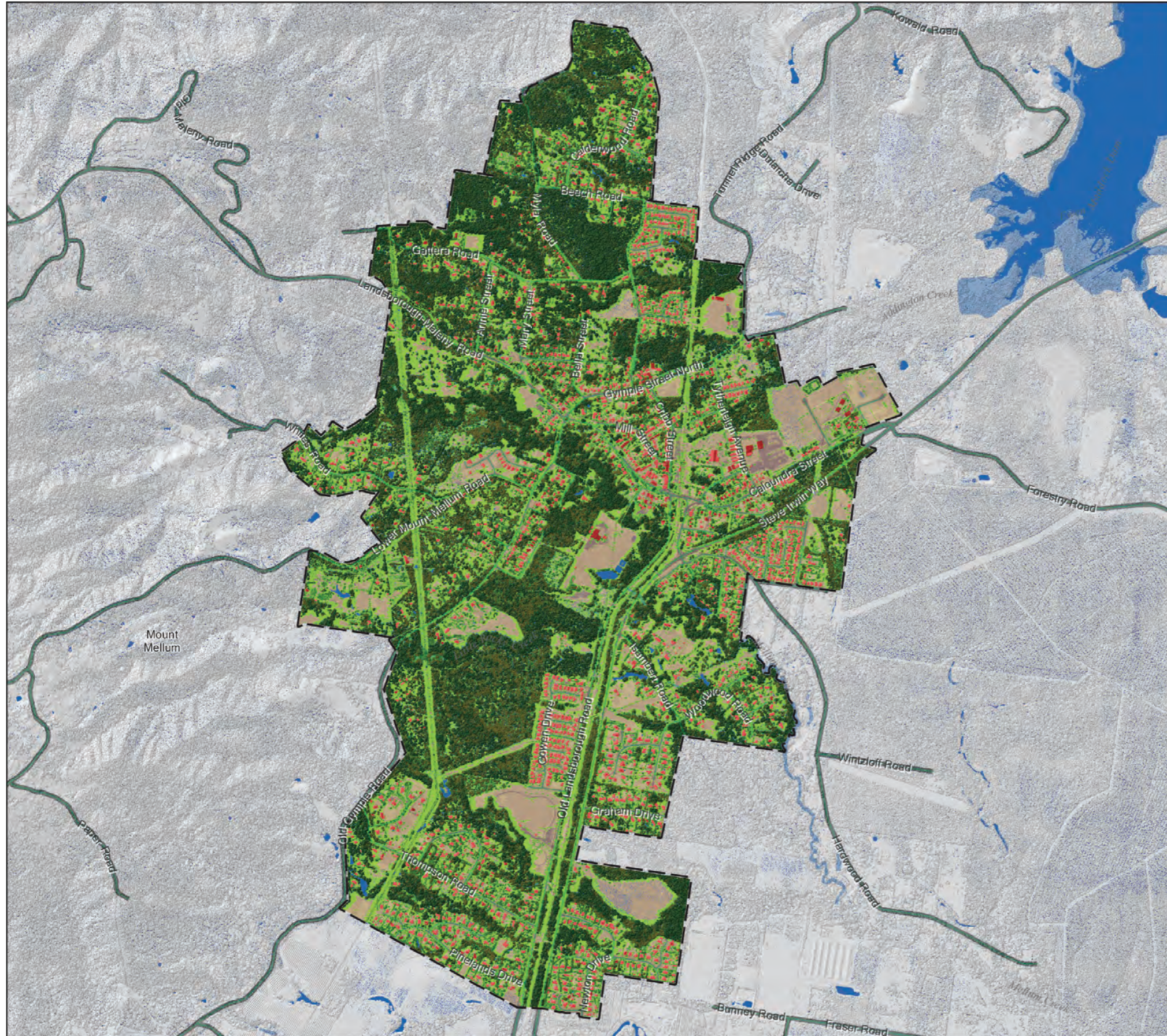
*Aphananthe philippinensis* (rough leaved elm)  
*Archontophoenix cunninghamiana* (piccabeen palm)  
*Argyrodendron trifoliolatum* (white booyong)  
*Castanospermum australe* (Moreton Bay chestnut)  
*Cryptocarya hypospodia* (purple laurel)  
*Cryptocarya obovata* (pepperberry)  
*Cryptocarya triplinervis* (three-veined laurel)  
*Ficus coronata* (sand paper fig)  
*Ficus fraseri* (Fraser Island fig)  
*Ficus macrophylla* (Moreton Bay fig)  
*Ficus obliqua* (small-leaved fig)  
*Mellicope elleryana* (pink euodia)  
*Nauclea orientalis* (yellow cheesewood)  
*Syzygium australe* (brush cherry)  
*Syzygium francisii* (giant water gum)

Street tree palettes are also appropriate for use in the locality of Mount Mellum.



# Foliage and Shade Cover

## Landsborough Local Plan Area



**Legend**

Vegetation Height (m)	Building Height (m)
0 - 0.3	0 - 1
0.3 - 2	1.0 - 2.8
2.0 - 6	2.8 - 5.0
6.0 - 12	5.0 - 12.0
12.0 - 18	12.0 - 65
18.0 - 80	Water Bodies
Canopy Shade	Local Plan Area Boundary

**Disclaimer**  
While every care is taken to ensure the accuracy of this product, neither the Sunshine Coast Regional Council nor the State of Queensland makes any representations or warranties about its accuracy, reliability, completeness or suitability for any particular purpose and disclaims all responsibility and all liability (including without limitation, liability in negligence) for all expenses, losses, damages (including indirect or consequential damage) and costs that may occur as a result of the product being inaccurate or incomplete in any way or for any reason.

© Crown and Council Copyright Reserved 2014  
Geocentric Datum of Australia 1994 (GDA94)

0 100 200 400 600 800 Metres  
1:21,000 at A3 size



# Priority Planting Plan

## Landsborough Local Plan Area



### Legend

#### Priority planting locations

##### Nodes and Parkland perimeters

- Esplanade no view
- Park perimeter planting
- Space for group planting
- Space for single compact tree
- Space for single large canopy tree
- Vegetative screen or buffer

#### Priority planting locations

##### Major thoroughfares and Walkable routes

- Road verge - Key pedestrian route
- Road verge - Local access or residential street
- Road verge - Major thoroughfare
- Local Plan Area boundary
- Priority Development Area (Maroochydore City Centre)
- Priority Development Area (Caloundra South)
- Declared Master Planned Areas (Maroochydore & Palmview)



**Disclaimer**  
While every care is taken to ensure the accuracy of this product, neither the Sunshine Coast Regional Council nor the State of Queensland makes any representations or warranties about its accuracy, reliability, completeness or suitability for any particular purpose and disclaims all responsibility and all liability (including without limitation, liability in negligence) for all expenses, losses, damages (including indirect or consequential damage) and costs that may occur as a result of the product being inaccurate or incomplete in any way or for any reason.

© Crown and Council Copyright Reserved 2014  
Geocentric Datum of Australia 1994 (GDA94)

0 100 200 400 600 800  
Metres

1:21,000 at A3 size

