

### Scenic Amenity Overlay Map

#### Land Subject to Scenic Amenity Overlay

- Scenic Route
- Regional Inter-Urban Break

#### Other Elements

- Local Plan Area Boundary
- Declared Master Planned Area (see Part 10 - Other Plans)
- Land within Development Control Plan 1 - Kawana Waters which is the subject of the Kawana Waters Development Agreement (see Section 1.2 - Planning Scheme Components)
- Priority Development Area (subject to the *Economic Development Act 2012*)

DCDB 31 January 2017 © State Government

**Note** – Overlays provide a trigger for consideration of an overlay issue to be verified by further on-site investigations.

**Note** – In certain circumstances pre-existing development approvals may override the operation of an overlay.

#### Disclaimer

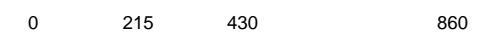
While every care is taken to ensure the accuracy of this product, neither the Sunshine Coast Regional Council nor the State of Queensland makes any representations or warranties about its accuracy, reliability, completeness or suitability for any particular purpose and disclaims all responsibility and all liability (including without limitation, liability in negligence) for all expenses, losses, damages (including indirect or consequential damage) and costs that may occur as a result of the product being inaccurate or incomplete in any way or for any reason.

© Crown and Council Copyright Reserved 2017

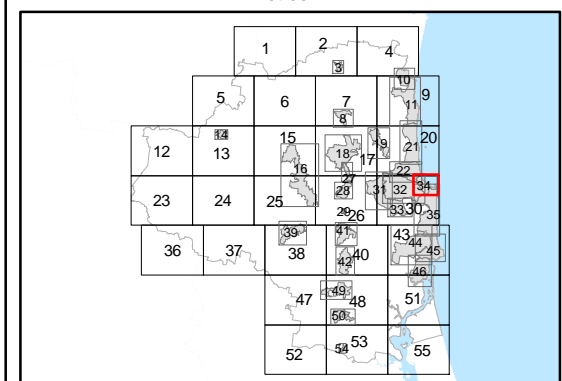
Geocentric Datum of Australia 1994 (GDA94)



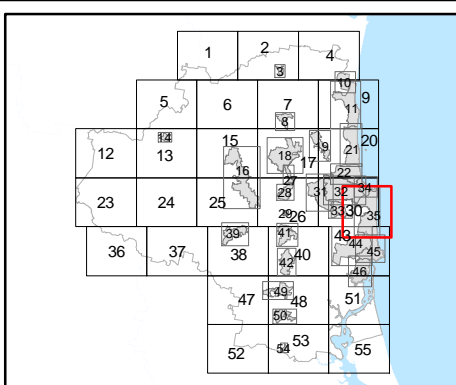
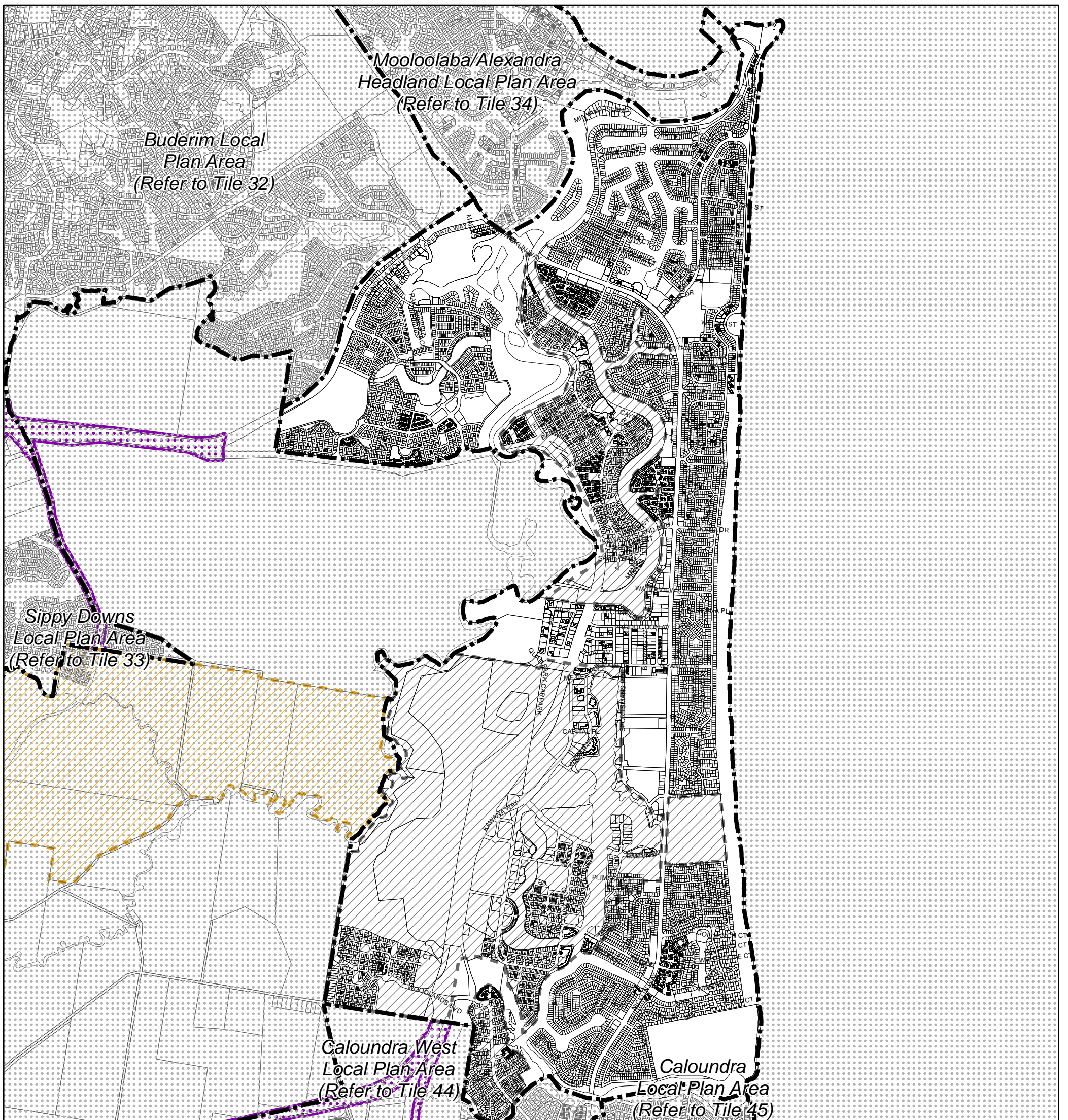
Approx Scale @ A3 1:15,514



Metres



### Overlay Map OVM34L



### Scenic Amenity Overlay Map

#### Land Subject to Scenic Amenity Overlay

- Scenic Route
- Regional Inter-Urban Break

Note – Overlays provide a trigger for consideration of an overlay issue to be verified by further on-site investigations.

Note – In certain circumstances pre-existing development approvals may override the operation of an overlay.

#### Other Elements

- Local Plan Area Boundary
- Declared Master Planned Area (see Part 10 - Other Plans)
- Land within Development Control Plan 1 - Kawana Waters which is the subject of the Kawana Waters Development Agreement (see Section 1.2 - Planning Scheme Components)
- Priority Development Area (subject to the Economic Development Act 2012)
- DCDB 31 January 2017 © State Government

**Disclaimer**  
While every care is taken to ensure the accuracy of this product, neither the Sunshine Coast Regional Council nor the State of Queensland makes any representations or warranties about its accuracy, reliability, completeness or suitability for any particular purpose and disclaims all responsibility and all liability (including without limitation, liability in negligence) for all expenses, losses, damages (including indirect or consequential damage) and costs that may occur as a result of the product being inaccurate or incomplete in any way or for any reason.

© Crown and Council Copyright Reserved 2017

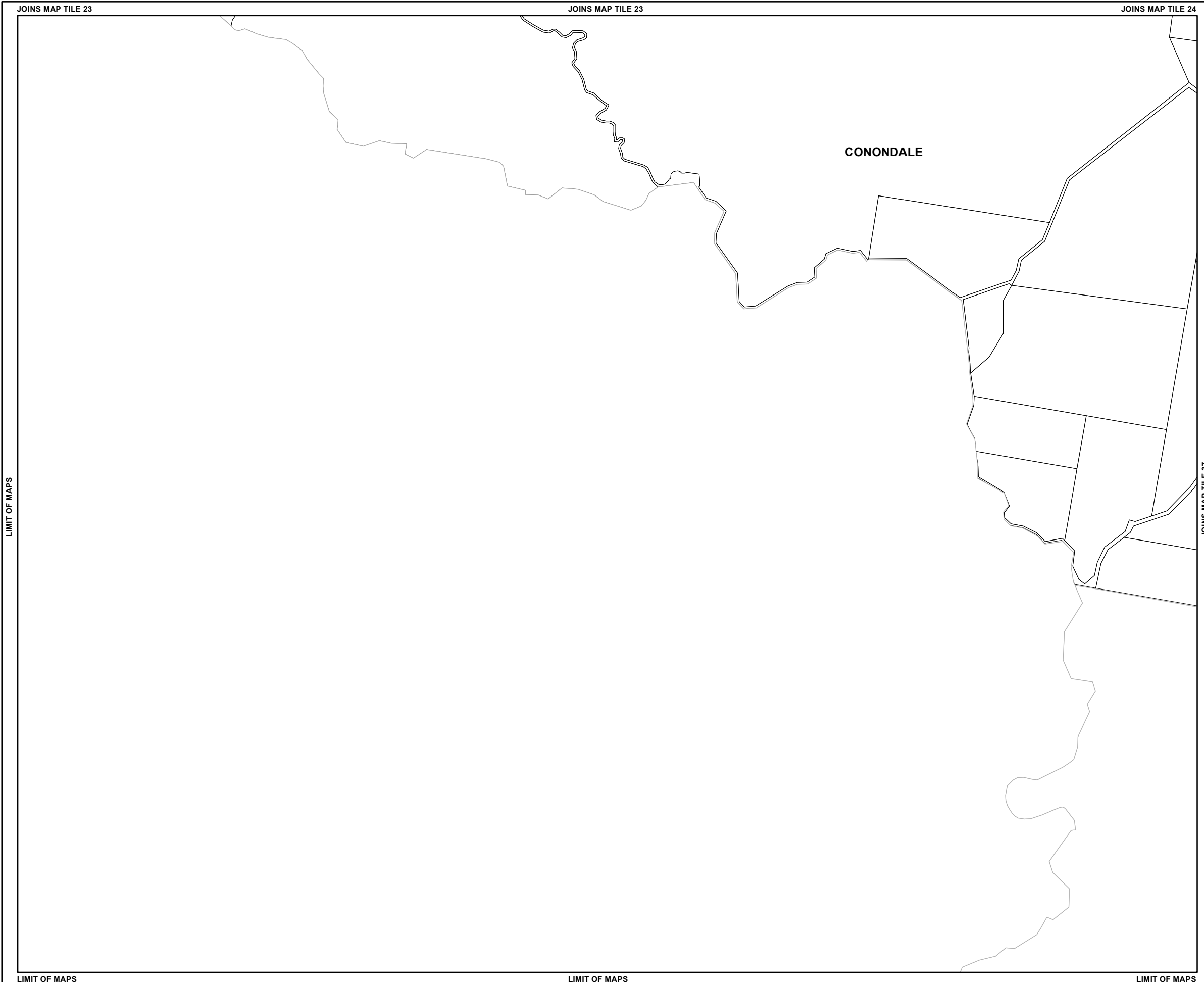
Geocentric Datum of Australia 1994 (GDA94)



Approx Scale @ A3 1:33,927



### Overlay Map OVM35L



## Scenic Amenity Overlay Map

### Land Subject to Scenic Amenity Overlay

- Scenic Route
- Regional Inter-Urban Break

### Other Elements

- Local Plan Area Boundary
- Declared Master Planned Area (see Part 10 - Other Plans)
- Land within Development Control Plan 1 - Kawana Waters which is the subject of the Kawana Waters Development Agreement (see Section 1.2 - Planning Scheme Components)
- Priority Development Area (subject to the *Economic Development Act 2012*)
- DCDB 31 January 2017 © State Government

**Note** – Overlays provide a trigger for consideration of an overlay issue to be verified by further on-site investigations.

**Note** – In certain circumstances pre-existing development approvals may override the operation of an overlay.

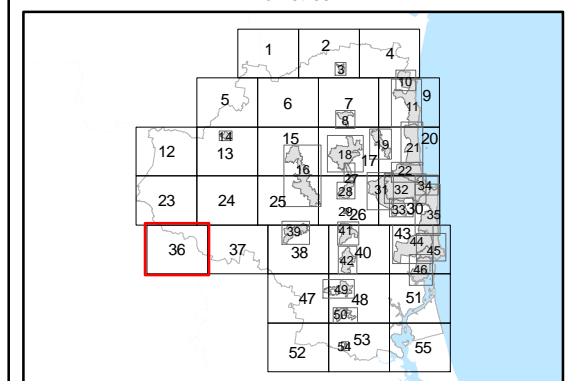
**Disclaimer**  
While every care is taken to ensure the accuracy of this product, neither the Sunshine Coast Regional Council nor the State of Queensland makes any representations or warranties about its accuracy, reliability, completeness or suitability for any particular purpose and disclaims all responsibility and all liability (including without limitation, liability in negligence) for all expenses, losses, damages (including indirect or consequential damage) and costs that may occur as a result of the product being inaccurate or incomplete in any way or for any reason.

© Crown and Council Copyright Reserved 2017

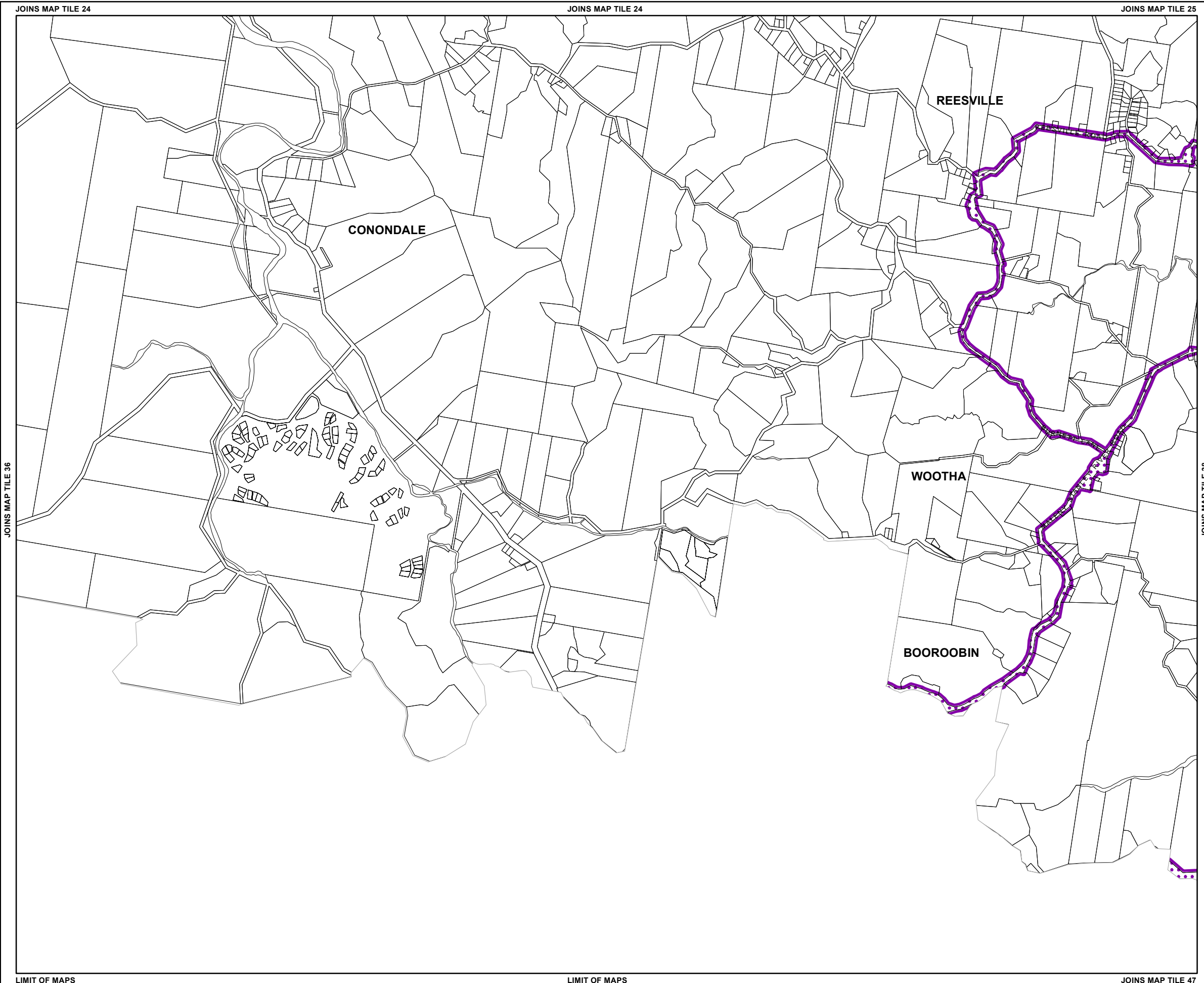
Geocentric Datum of Australia 1994 (GDA94)



Approx Scale @ A3 1:40,000



## Overlay Map OVM36L



## Scenic Amenity Overlay Map

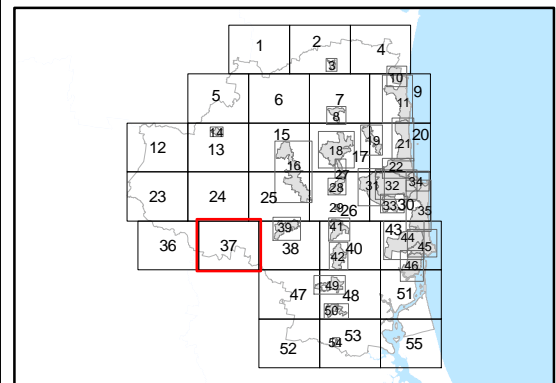
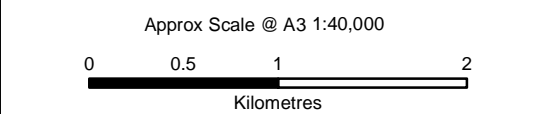
- Land Subject to Scenic Amenity Overlay**
- Scenic Route
  - Regional Inter-Urban Break
- Other Elements**
- Local Plan Area Boundary
  - Declared Master Planned Area (see Part 10 - Other Plans)
  - Land within Development Control Plan 1 - Kawana Waters which is the subject of the Kawana Waters Development Agreement (see Section 1.2 - Planning Scheme Components)
  - Priority Development Area (subject to the *Economic Development Act 2012*)
  - DCDB 31 January 2017 © State Government

**Note** – Overlays provide a trigger for consideration of an overlay issue to be verified by further on-site investigations.

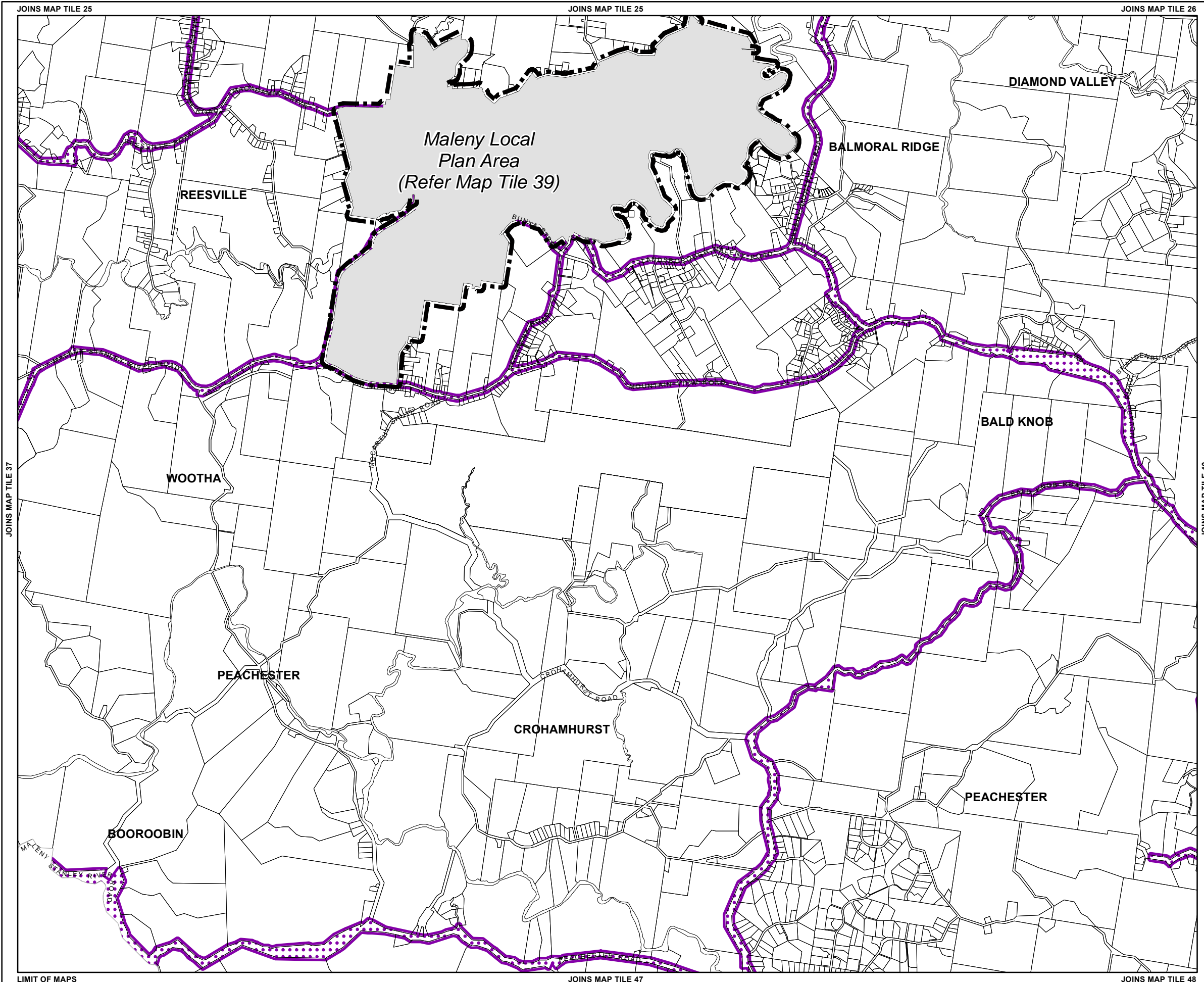
**Note** – In certain circumstances pre-existing development approvals may override the operation of an overlay.

**Disclaimer**  
While every care is taken to ensure the accuracy of this product, neither the Sunshine Coast Regional Council nor the State of Queensland makes any representations or warranties about its accuracy, reliability, completeness or suitability for any particular purpose and disclaims all responsibility and all liability (including without limitation, liability in negligence) for all expenses, losses, damages (including indirect or consequential damage) and costs that may occur as a result of the product being inaccurate or incomplete in any way or for any reason.

© Crown and Council Copyright Reserved 2017  
Geocentric Datum of Australia 1994 (GDA94)



## Overlay Map OVM37L



## Scenic Amenity Overlay Map

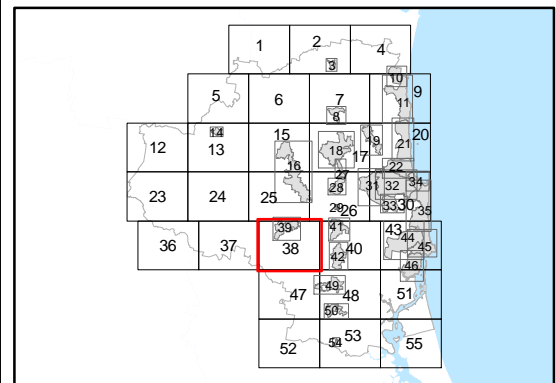
- Land Subject to Scenic Amenity Overlay**
- Scenic Route
  - Regional Inter-Urban Break
- Other Elements**
- Local Plan Area Boundary
  - Declared Master Planned Area (see Part 10 - Other Plans)
  - Land within Development Control Plan 1 - Kawana Waters which is the subject of the Kawana Waters Development Agreement (see Section 1.2 - Planning Scheme Components)
  - Priority Development Area (subject to the Economic Development Act 2012)
  - DCDB 31 January 2017 © State Government

**Note** – Overlays provide a trigger for consideration of an overlay issue to be verified by further on-site investigations.

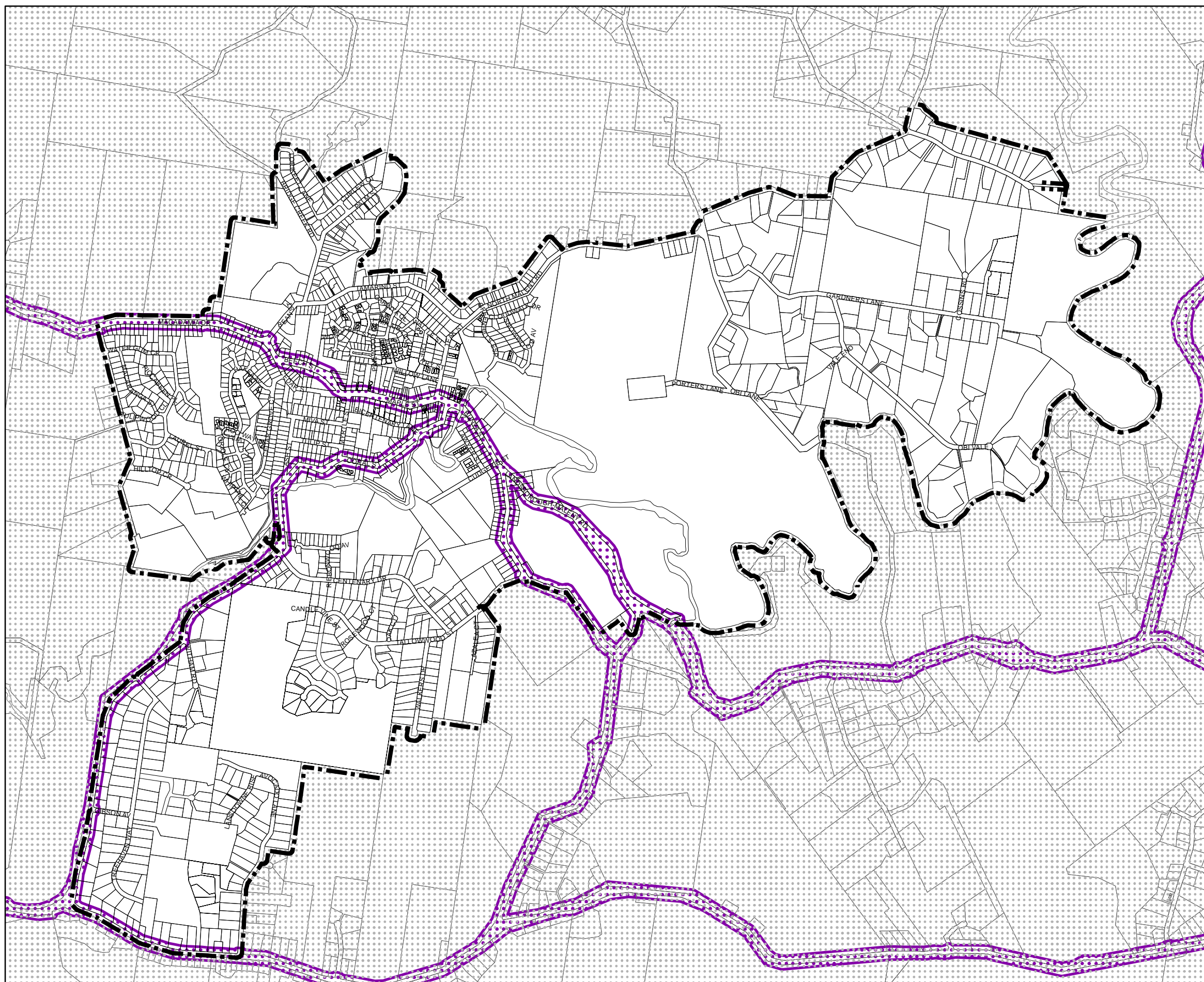
**Note** – In certain circumstances pre-existing development approvals may override the operation of an overlay.

**Disclaimer**  
While every care is taken to ensure the accuracy of this product, neither the Sunshine Coast Regional Council nor the State of Queensland makes any representations or warranties about its accuracy, reliability, completeness or suitability for any particular purpose and disclaims all responsibility and all liability (including without limitation, liability in negligence) for all expenses, losses, damages (including indirect or consequential damage) and costs that may occur as a result of the product being inaccurate or incomplete in any way or for any reason.

© Crown and Council Copyright Reserved 2017  
Geocentric Datum of Australia 1994 (GDA94)



## Overlay Map OVM38L



### Scenic Amenity Overlay Map

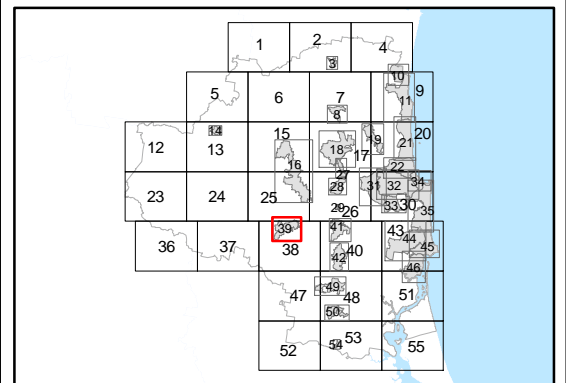
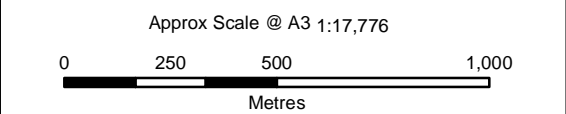
- Land Subject to Scenic Amenity Overlay**
- Scenic Route
  - Regional Inter-Urban Break
- Other Elements**
- Local Plan Area Boundary
  - Declared Master Planned Area (see Part 10 - Other Plans)
  - Land within Development Control Plan 1 - Kawana Waters which is the subject of the Kawana Waters Development Agreement (see Section 1.2 - Planning Scheme Components)
  - Priority Development Area (subject to the Economic Development Act 2012)
  - DCDB 31 January 2017 © State Government

**Note** – Overlays provide a trigger for consideration of an overlay issue to be verified by further on-site investigations.

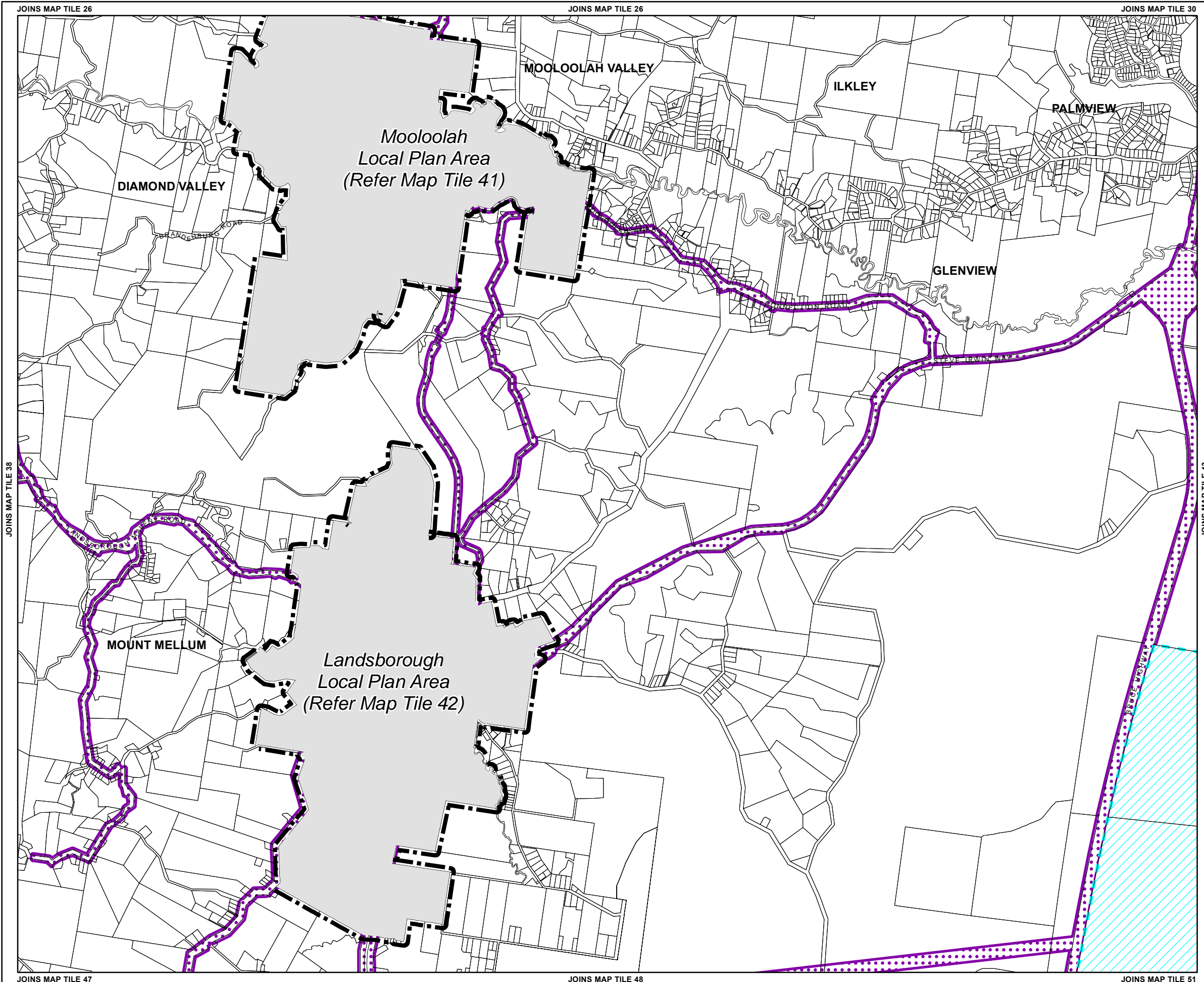
**Note** – In certain circumstances pre-existing development approvals may override the operation of an overlay.

**Disclaimer**  
While every care is taken to ensure the accuracy of this product, neither the Sunshine Coast Regional Council nor the State of Queensland makes any representations or warranties about its accuracy, reliability, completeness or suitability for any particular purpose and disclaims all responsibility and all liability (including without limitation, liability in negligence) for all expenses, losses, damages (including indirect or consequential damage) and costs that may occur as a result of the product being inaccurate or incomplete in any way or for any reason.

© Crown and Council Copyright Reserved 2017  
Geocentric Datum of Australia 1994 (GDA94)



### Overlay Map OVM39L



## Scenic Amenity Overlay Map

### Land Subject to Scenic Amenity Overlay

- Scenic Route
- Regional Inter-Urban Break

### Other Elements

- Local Plan Area Boundary
- Declared Master Planned Area (see Part 10 - Other Plans)
- Land within Development Control Plan 1 - Kawana Waters which is the subject of the Kawana Waters Development Agreement (see Section 1.2 - Planning Scheme Components)
- Priority Development Area (subject to the Economic Development Act 2012)

DCDB 31 January 2017 © State Government

**Note** – Overlays provide a trigger for consideration of an overlay issue to be verified by further on-site investigations.

**Note** – In certain circumstances pre-existing development approvals may override the operation of an overlay.

### Disclaimer

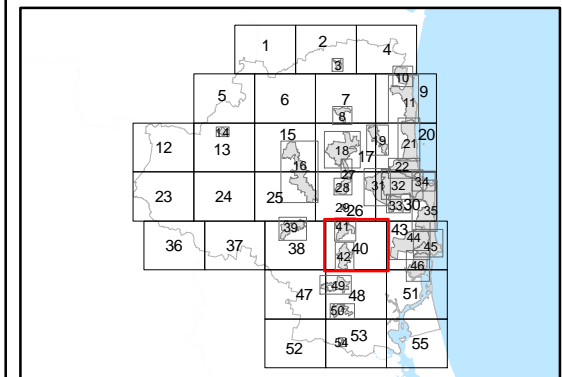
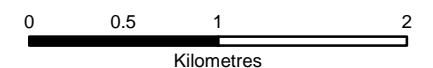
While every care is taken to ensure the accuracy of this product, neither the Sunshine Coast Regional Council nor the State of Queensland makes any representations or warranties about its accuracy, reliability, completeness or suitability for any particular purpose and disclaims all responsibility and all liability (including without limitation, liability in negligence) for all expenses, losses, damages (including indirect or consequential damage) and costs that may occur as a result of the product being inaccurate or incomplete in any way or for any reason.

© Crown and Council Copyright Reserved 2017

Geocentric Datum of Australia 1994 (GDA94)









Approx Scale @ A3 1:40,000

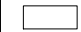


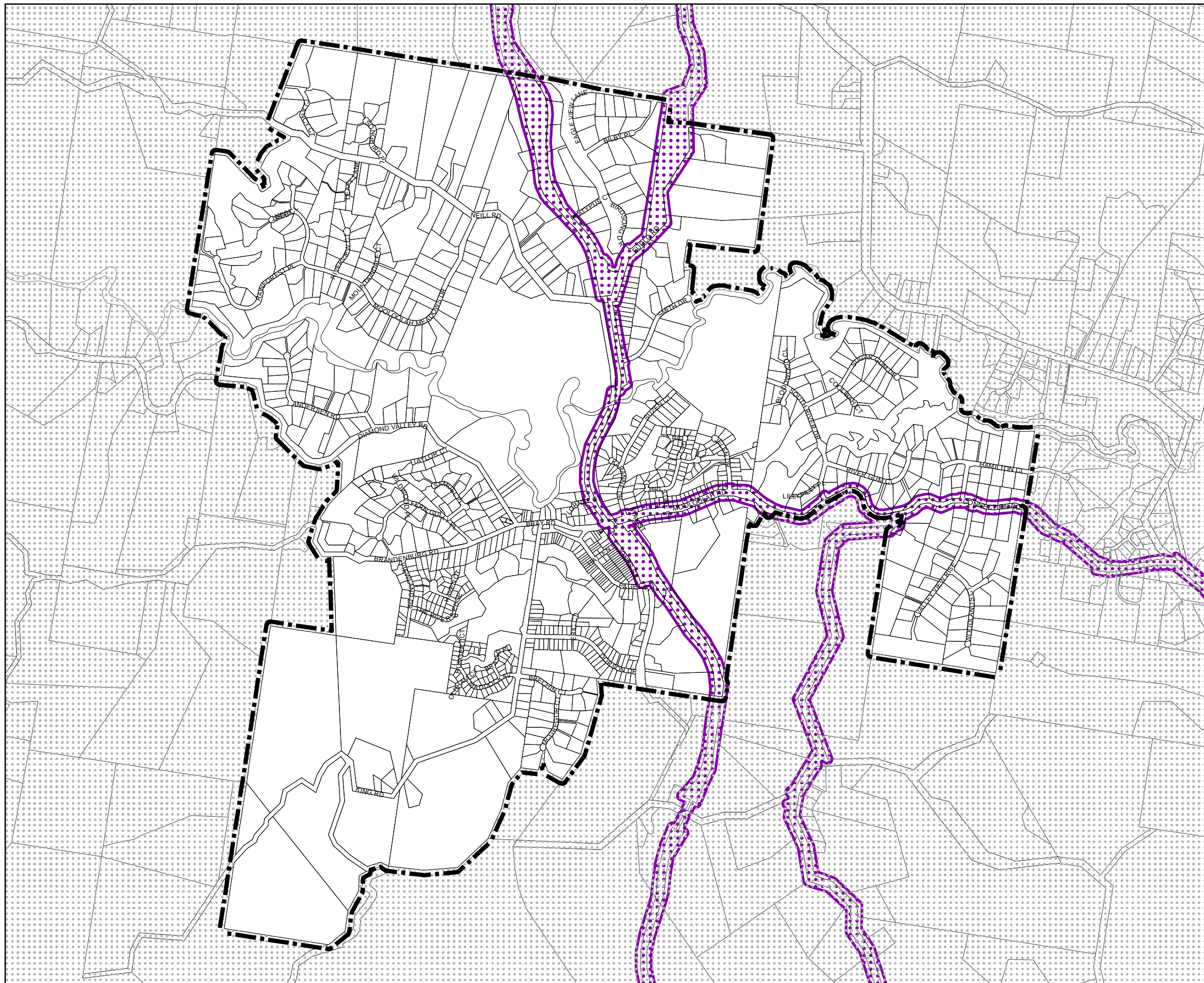
## Overlay Map OVM40L

### Scenic Amenity Overlay Map

#### Land Subject to Scenic Amenity Overlay

-  Scenic Route
-  Regional Inter-Urban Break
- Other Elements**
-  Local Plan Area Boundary
-  Declared Master Planned Area (see Part 10 - Other Plans)
-  Land within Development Control Plan 1 - Kawana Waters which is the subject of the Kawana Waters Development Agreement (see Section 1.2 - Planning Scheme Components)
-  Priority Development Area (subject to the *Economic Development Act 2012*)

 DCDB 31 January 2017 © State Government



**Note** – Overlays provide a trigger for consideration of an overlay issue to be verified by further on-site investigations.

**Note** – In certain circumstances pre-existing development approvals may override the operation of an overlay.

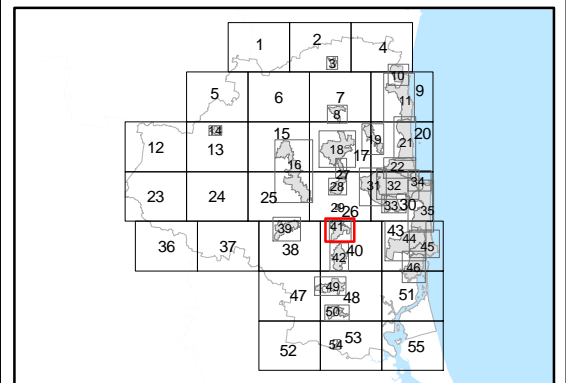
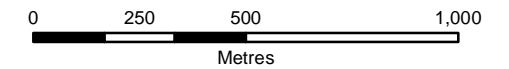
**Disclaimer**  
While every care is taken to ensure the accuracy of this product, neither the Sunshine Coast Regional Council nor the State of Queensland makes any representations or warranties about its accuracy, reliability, completeness or suitability for any particular purpose and disclaims all responsibility and all liability (including without limitation, liability in negligence) for all expenses, losses, damages (including indirect or consequential damage) and costs that may occur as a result of the product being inaccurate or incomplete in any way or for any reason.

© Crown and Council Copyright Reserved 2017

Geocentric Datum of Australia 1994 (GDA94)

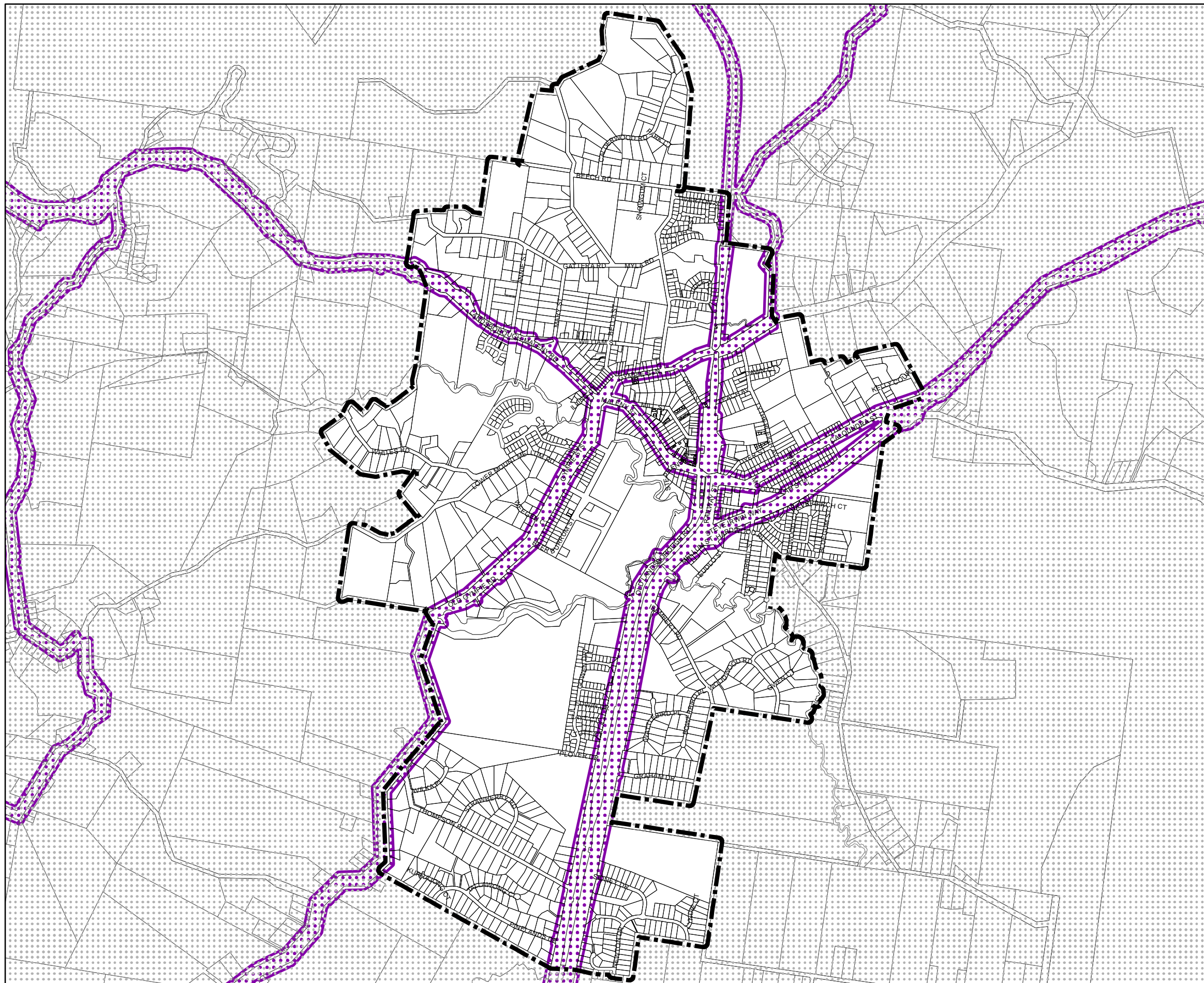


Approx Scale @ A3 1:17,776



### Overlay Map OVM41L





### Scenic Amenity Overlay Map

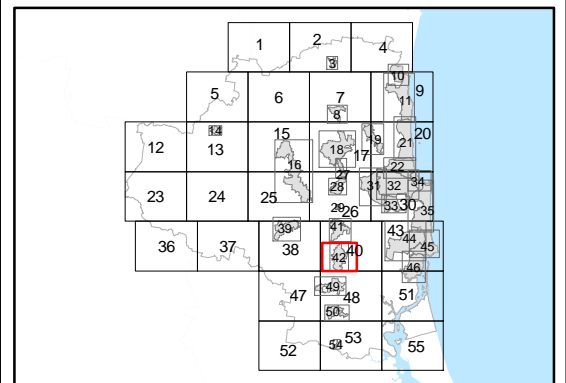
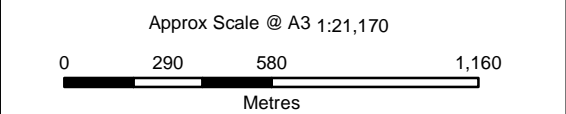
- Land Subject to Scenic Amenity Overlay**
- Scenic Route
  - Regional Inter-Urban Break
- Other Elements**
- Local Plan Area Boundary
  - Declared Master Planned Area (see Part 10 - Other Plans)
  - Land within Development Control Plan 1 - Kawana Waters which is the subject of the Kawana Waters Development Agreement (see Section 1.2 - Planning Scheme Components)
  - Priority Development Area (subject to the *Economic Development Act 2012*)
- DCDB 31 January 2017 © State Government

**Note** – Overlays provide a trigger for consideration of an overlay issue to be verified by further on-site investigations.

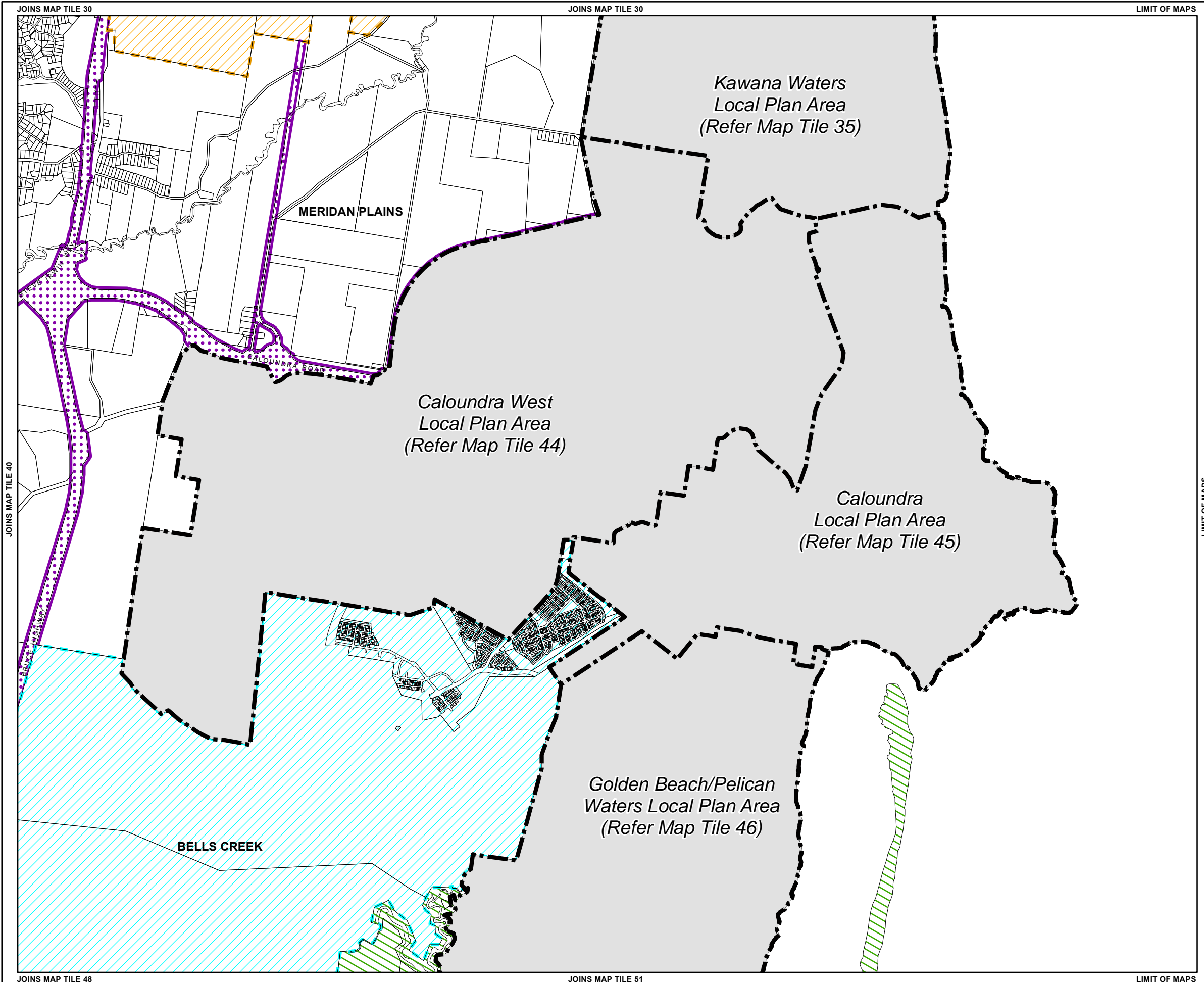
**Note** – In certain circumstances pre-existing development approvals may override the operation of an overlay.

**Disclaimer**  
 While every care is taken to ensure the accuracy of this product, neither the Sunshine Coast Regional Council nor the State of Queensland makes any representations or warranties about its accuracy, reliability, completeness or suitability for any particular purpose and disclaims all responsibility and all liability (including without limitation, liability in negligence) for all expenses, losses, damages (including indirect or consequential damage) and costs that may occur as a result of the product being inaccurate or incomplete in any way or for any reason.

© Crown and Council Copyright Reserved 2017  
 Geocentric Datum of Australia 1994 (GDA94)



### Overlay Map OVM 42L



## Scenic Amenity Overlay Map

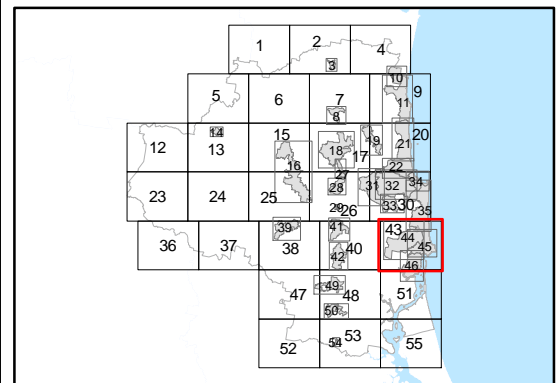
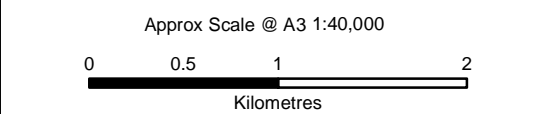
- Land Subject to Scenic Amenity Overlay**
- Scenic Route
  - Regional Inter-Urban Break
- Other Elements**
- Local Plan Area Boundary
  - Declared Master Planned Area (see Part 10 - Other Plans)
  - Land within Development Control Plan 1 - Kawana Waters which is the subject of the Kawana Waters Development Agreement (see Section 1.2 - Planning Scheme Components)
  - Priority Development Area (subject to the *Economic Development Act 2012*)
  - DCDB 31 January 2017 © State Government

**Note** – Overlays provide a trigger for consideration of an overlay issue to be verified by further on-site investigations.

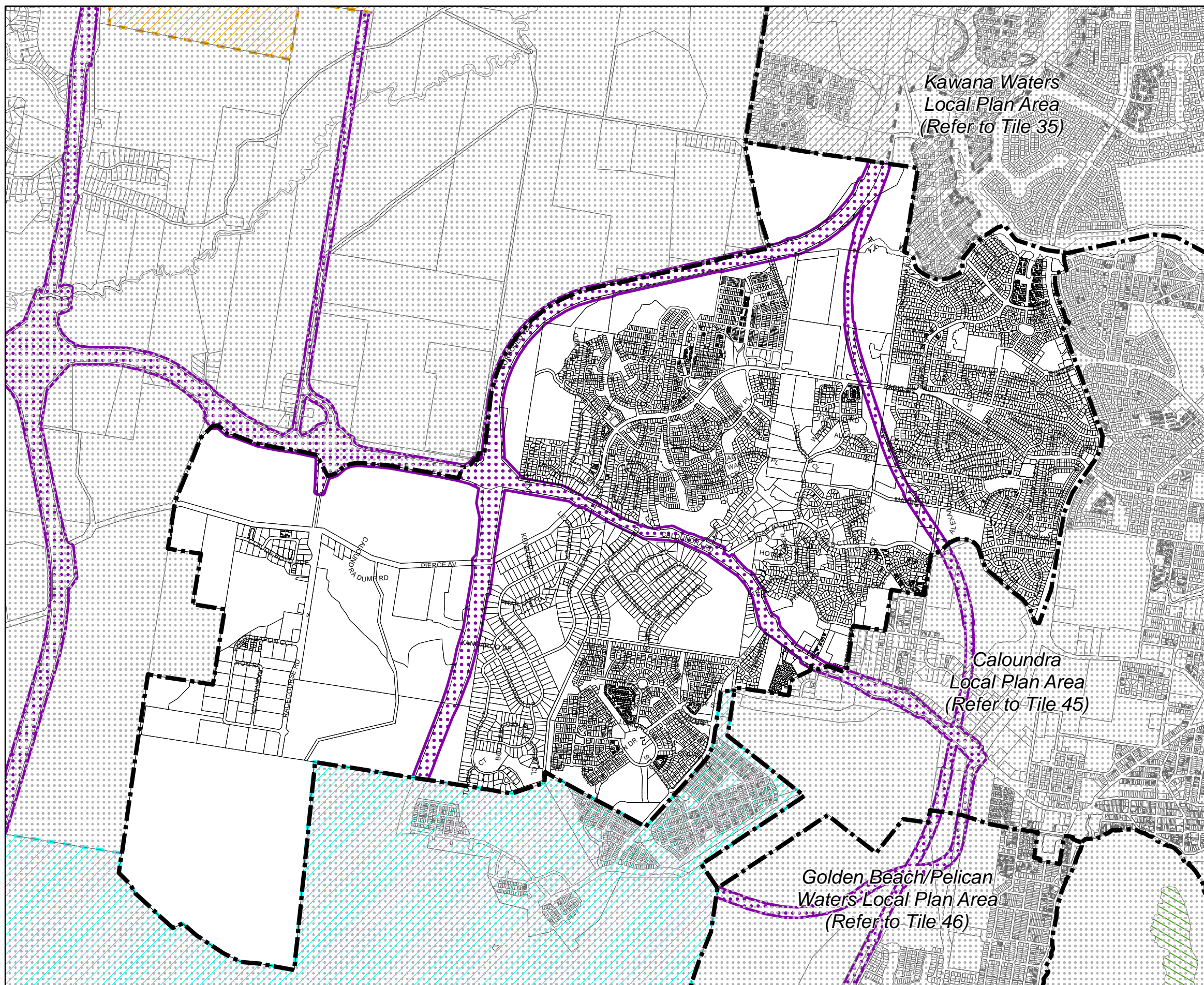
**Note** – In certain circumstances pre-existing development approvals may override the operation of an overlay.

**Disclaimer**  
While every care is taken to ensure the accuracy of this product, neither the Sunshine Coast Regional Council nor the State of Queensland makes any representations or warranties about its accuracy, reliability, completeness or suitability for any particular purpose and disclaims all responsibility and all liability (including without limitation, liability in negligence) for all expenses, losses, damages (including indirect or consequential damage) and costs that may occur as a result of the product being inaccurate or incomplete in any way or for any reason.

© Crown and Council Copyright Reserved 2017  
Geocentric Datum of Australia 1994 (GDA94)



## Overlay Map OVM43L



### Scenic Amenity Overlay Map

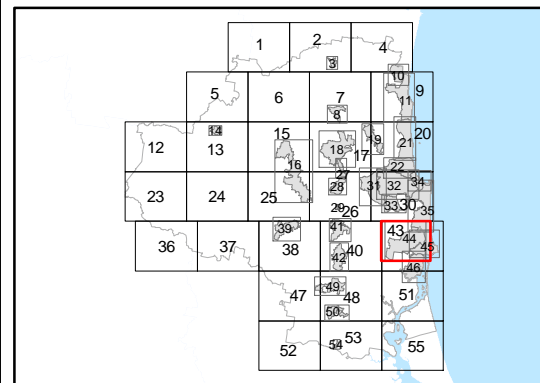
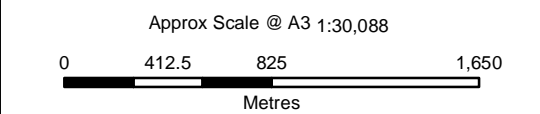
- Land Subject to Scenic Amenity Overlay**
- Scenic Route
  - Regional Inter-Urban Break
- Other Elements**
- Local Plan Area Boundary
  - Declared Master Planned Area (see Part 10 - Other Plans)
  - Land within Development Control Plan 1 - Kawana Waters which is the subject of the Kawana Waters Development Agreement (see Section 1.2 - Planning Scheme Components)
  - Priority Development Area (subject to the Economic Development Act 2012)
  - DCDB 31 January 2017 © State Government

**Note** – Overlays provide a trigger for consideration of an overlay issue to be verified by further on-site investigations.

**Note** – In certain circumstances pre-existing development approvals may override the operation of an overlay.

**Disclaimer**  
While every care is taken to ensure the accuracy of this product, neither the Sunshine Coast Regional Council nor the State of Queensland makes any representations or warranties about its accuracy, reliability, completeness or suitability for any particular purpose and disclaims all responsibility and all liability (including without limitation, liability in negligence) for all expenses, losses, damages (including indirect or consequential damage) and costs that may occur as a result of the product being inaccurate or incomplete in any way or for any reason.

© Crown and Council Copyright Reserved 2017  
Geocentric Datum of Australia 1994 (GDA94)



### Overlay Map OVM 44L