



Blackall Range

Street tree strategy

Description of area and land use

The Blackall Range plan area is comprised of the hinterland villages of Mapleton and Montville, the locality of Flaxton, and surrounding rural and rural residential landscapes. Spanning 2505 hectares of the Maleny plateau, the verdant and scenic landscape features large deciduous and broad-leaved trees, dramatic views and a popular tourist drive winding its way through rural landscapes and character villages. Residential streets and centres in the elevated plan area are cool, leafy and green and help to create a unique mountain atmosphere which provides contrast to the ever-present coastal character of the majority of Sunshine Coast landscapes.

Cattle grazing is the mainstay of agriculture in the area following extensive clearing of vegetation for timber-getting in the nineteenth century. Land use is mostly rural and rural residential living however a niche day trip/overnight tourist market is thriving with tourism-focused restaurants, boutique shopping and B&Bs scattered across the plan area. Major conservation areas surround the key communities with Kondalilla Falls National Park, Mapleton Falls and Mapleton National Parks significant natural attractions. Cultural landscape features include the Mapleton Lillyponds, the weeping figs of Montville's Village Green, and the stunning autumn colour of Russell Family Park.

Trees and landscape character

The rich volcanic soils and temperate climate (an outcome of the elevation) have given rise to a distinctive landscape that supports amongst many Sunshine Coast signature plants, an exotic deciduous tree palette. The red soils and cooler climate are also responsible for good plant establishment success rates and steady growth.

Natural plant communities that covered the plan area before clearing include tall open forest, notophyll vine forest, wet heath and wet sclerophyll forests. The *Foliage and Shade Cover* map shows some of the region's tallest trees are preserved in the national parks and state forests of the plan area, many likely to have been spared from the timber-getters as an outcome of difficult access.

Canopy cover

The Blackall Range contains the greatest extent of tree canopy in all of the Sunshine Coast Council region with 62% of all lands containing tree cover and 82.8% of lands either directly covered in trees or shaded by these trees in the morning or late afternoon. The average height of trees in the plan area is 11m. The plan area also exhibits the greatest extent of tree cover over road reserve in all of the Sunshine Coast Council region, with 48% of road reserve spaces covered in trees. With an average foliage density of 38%, the types of trees growing in road reserves of the plan area also provide the most value in terms of cooling and shading.

Major opportunities and constraints

The good soils and cooler climate of the Blackall Range support a range of trees that cannot be grown elsewhere on the coast. Wide verges in many of the area's rural residential streets and deep planting zones at intersections on the well-travelled Blackall Range Road provide ample opportunity for the establishment of large canopy trees as features and to enhance the forest feel of the plan area.

Opportunity for street trees to provide colour and visual interest to the plan area's townships, as well reinforce each town's individual character exist. While the village of Montville is well-treed with few sites for new street trees available, Mapleton exhibits numerous opportunities for infill and shade tree plantings. Within the locality of Flaxton good potential exists to enhance the popular scenic drive through extension of existing tree avenues and the establishment of large canopy trees in strategic locations.

Good prospects also exist to complete local streetscapes highly visible from the main tourist route to 100% occupancy with the addition of a several key plantings. Partnerships to help nurture trees in these residential landscapes should be explored.

Existing views are the greatest constraint to street tree planting in the plan area. All new street tree plantings must be considerate of the area's natural values and be positioned so as to not detract from areas of significant scenic amenity.

Street tree planting strategies

The current look, feel and character of the locality is preserved as an outcome of on-going programs of street tree planting.

Street tree planting programs sustain the existing formal and stately character of landscapes within the locality's villages and along scenic stretches with town lead-ins key priorities for avenue extension and infill planting.

Village amenity is increased through infilling of avenues within town centres. Opportunities to create planting nodes that provide colour and contrast or to cement the individual character of each precinct area should be explored.

All new plantings are respectful of scenic amenity and the preservation of significant views and vistas.

Large canopy trees are planted as features wherever space permits, and a wider palette of species in general is utilised.

Koelreutaria elegans (golden rain tree) is phased out of streetscapes through natural attrition.

Street tree planting aligns with the *Montville Streetscape Master Plan* (1997), *Mapleton CCV Master Plan* (no date) and *Mapleton Lilly Ponds Parkland Master Plan* (Jan 2006).

Street tree palettes

Signature trees

Avenue trees

Buckinghamia celcissima (ivory curl)
Delonix regia (poinciana) (where existing only)
Diploglottis cunninghamii (tamarind)
Elaeocarpus obovatus (hard quandong)
Flindersia schottiana (cudgeriee)
Liquidambar styraciflua (sweetgum)
Syzygium australe (brush cherry)
Waterhousia floribunda (syn. *Syzygium floribundum*) (weeping lilly pilly)
Xanthostemon chrysanthus (golden penda)

Trees for accent and highlights

Alloxylon pinnatum (syn. *Oreocallis pinnata*) (Dorrigo waratah tree)
Brachychiton acerifolius (Illawarra flame tree)
Brachychiton discolor (lacebark)
Magnolia 'Little Gem' (little bull magnolia)
Melaleuca (syn. *Callistemon*) *viridiflora* (broad-leaved paperbark)

Signature trees (cont.)

Feature trees for large spaces

Agathis robusta (Queensland kauri pine)
Araucaria bidwillii (bunya pine) (where space allows) (Flaxton)
Araucaria cunninghamii (hoop pine)
Caesalpinia ferrea (leopard tree) (Montville)
Cinnamomum oliverii (Oliver's sassafrass)
Elaeocarpus grandis (blue quandong)
Ficus macrophylla (Moreton Bay fig)
Ficus obliqua (small-leaved fig)
Ficus superba var. *henneana* (strangler fig)
Ficus watkinsiana (green-leaved Moreton Bay fig)
Gmelina leichhardtii (white beech)
*Grevillea hilliana** (Hill's silky oak) (trial species)
Magnolia grandiflora (bull magnolia)
Quercus suber (cork oak)
Samanea saman (rain tree)
Sloanea woollsii (yellow carabeen)
Syzygium francisii (giant water gum)
Syzygium (syn. *Acmena*) *ingens* (red apple lilly pilly)
Syncarpia glomulifera (turpentine)
Syncarpia verecunda (Ravensbourne turpentine)
Tamarindus indica (tamarind)
Toona ciliata (syn. *australis*) (red cedar)

See also *Locally native species for natural character features* palette for use where appropriate.

Trees for local streets

Arbutus x andrachnoides (strawberry tree) (wide verges)
Backhousia citriodora (lemon myrtle)
Buckinghamia celcissima (ivory curl)
Caesalpinia ferrea (leopard tree) (where formal avenues exist)
Castanospora alphanthii (brown tamarind)
Cupaniopsis parvifolia (small leaved tuckeroo)
*Diospyros pentamera** (myrtle ebony/grey persimmon) (trial locations)
Diploglottis australis (tamarind)
Elaeocarpus eumundii (Eumundi quandong) (where existing)
Elaeocarpus kirtonii (silver quandong)
Elaeocarpus obovatus (hard quandong)
Flindersia australis (Crow's ash)
Flindersia xanthoxyla (long jack/yellow wood)
*Grevillea hilliana** (white silky oak) (trial species)
Harpullia pendula (tulipwood)
Harpullia hilliana (blunt leaf tulipwood)
*Litsia australis** (southern brown bolly gum) (trial species)
*Litsia leefiana** (brown bolly gum) (trial species)
Melaleuca (syn. *Callistemon*) *viminalis* 'Wild fire' (weeping crimson bottle brush)
*Olea paniculata** (native olive) (trial locations)
Podocarpus elatus (brown pine)
*Syzygium crebrinerve** (purple cherry tree) (trial locations)
Waterhousia floribunda (syn. *Syzygium floribundum*) (weeping lilly pilly)

Locally native species for natural character features

Woodland/open forest

Allocasuarina torulosa (forest sheoak)
Eucalyptus creba (narrow-leaved ironbark)
Eucalyptus grandis (flooded gum)
Eucalyptus pilularis (blackbutt)
Eucalyptus propinqua (grey gum)
Eucalyptus tereticornis (blue gum/forest red gum)
Lophostemon confertus (brush box)
Lophostemon suaveolens (swamp box)

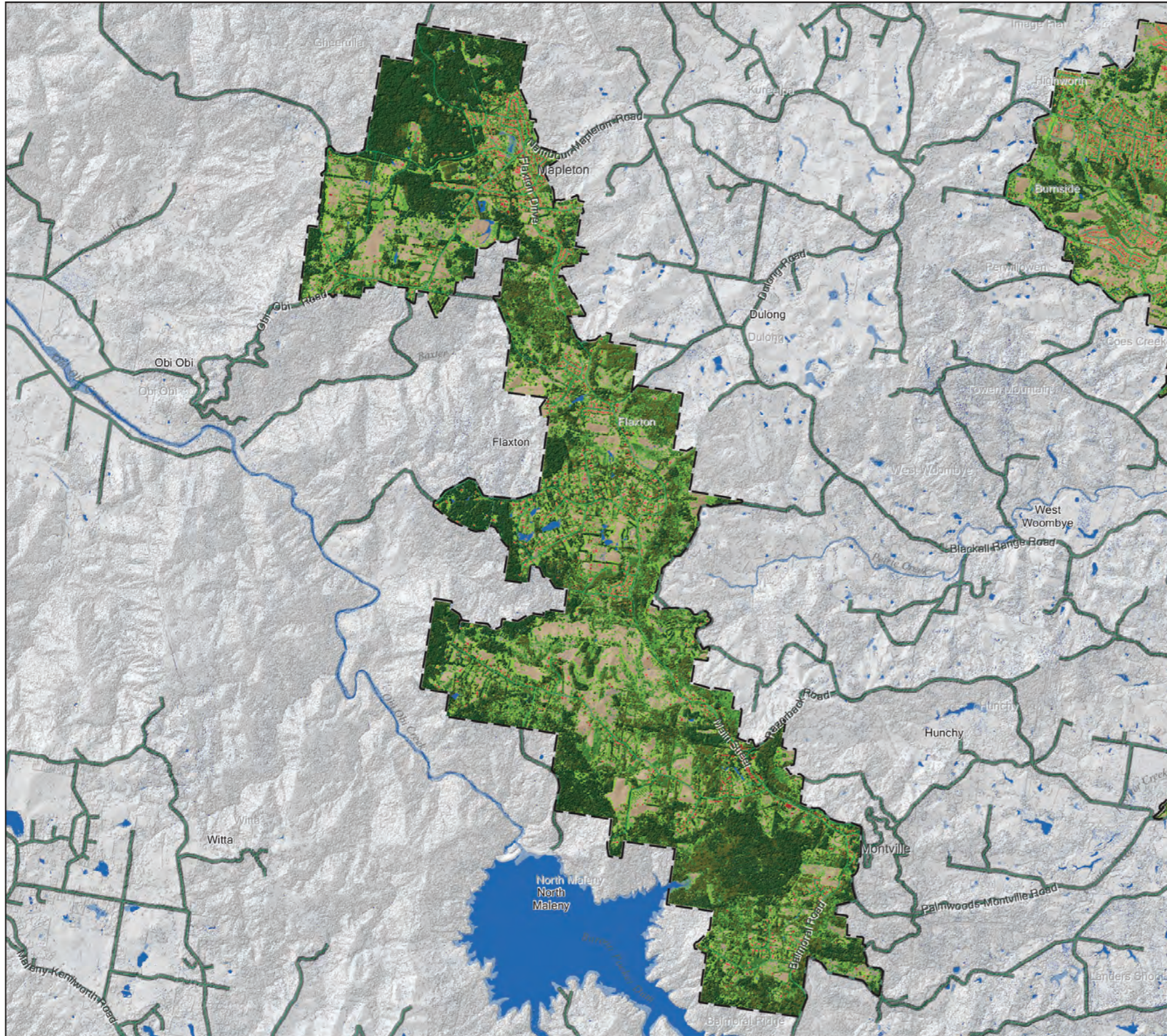
Rainforest

Archontophoenix cunninghamiana (Piccabeen palm)
Argyrodendron trifoliolatum (white booyong)
Backhousia (syn. *Choricarpia*) *subargentea* (giant ironwood)
Brachychiton discolor (lacebark)
Beilschmiedia obtusifolia (blush walnut)
Castanospermum australe (Moreton Bay chestnut)
Cryptocarya obovata (pepperberry)
Diospyros pentamera (myrtle ebony/grey persimmon)
Diploglottis australis (tamarind)
Grevillea robusta (silky oak)
Neolitsea dealbata (hairy leaved bolly gum)
Olea paniculata (native olive)
Podocarpus elatus (brown pine)
Pseudoweinmannia lachnocarpa (scrub rosewood)
Sloanea woollsii (yellow carabeen)

Street tree palettes are also suitable for use in the localities of Dulong, Hunchy, Kureelipa, Kiamba, Coolabin and Towen Mountain.

Foliage and Shade Cover

Blackall Range Local Plan Area



Legend

Vegetation Height (m)	Building Height (m)
0 - 0.3	0 - 1
0.3 - 2	1.0 - 2.8
2.0 - 6	2.8 - 5.0
6.0 - 12	5.0 - 12.0
12.0 - 18	12.0 - 65
18.0 - 80	Water Bodies
Canopy Shade	Local Plan Area Boundary

Disclaimer
 While every care is taken to ensure the accuracy of this product, neither the Sunshine Coast Regional Council nor the State of Queensland makes any representations or warranties about its accuracy, reliability, completeness or suitability for any particular purpose and disclaims all responsibility and all liability (including without limitation, liability in negligence) for all expenses, losses, damages (including indirect or consequential damage) and costs that may occur as a result of the product being inaccurate or incomplete in any way or for any reason.

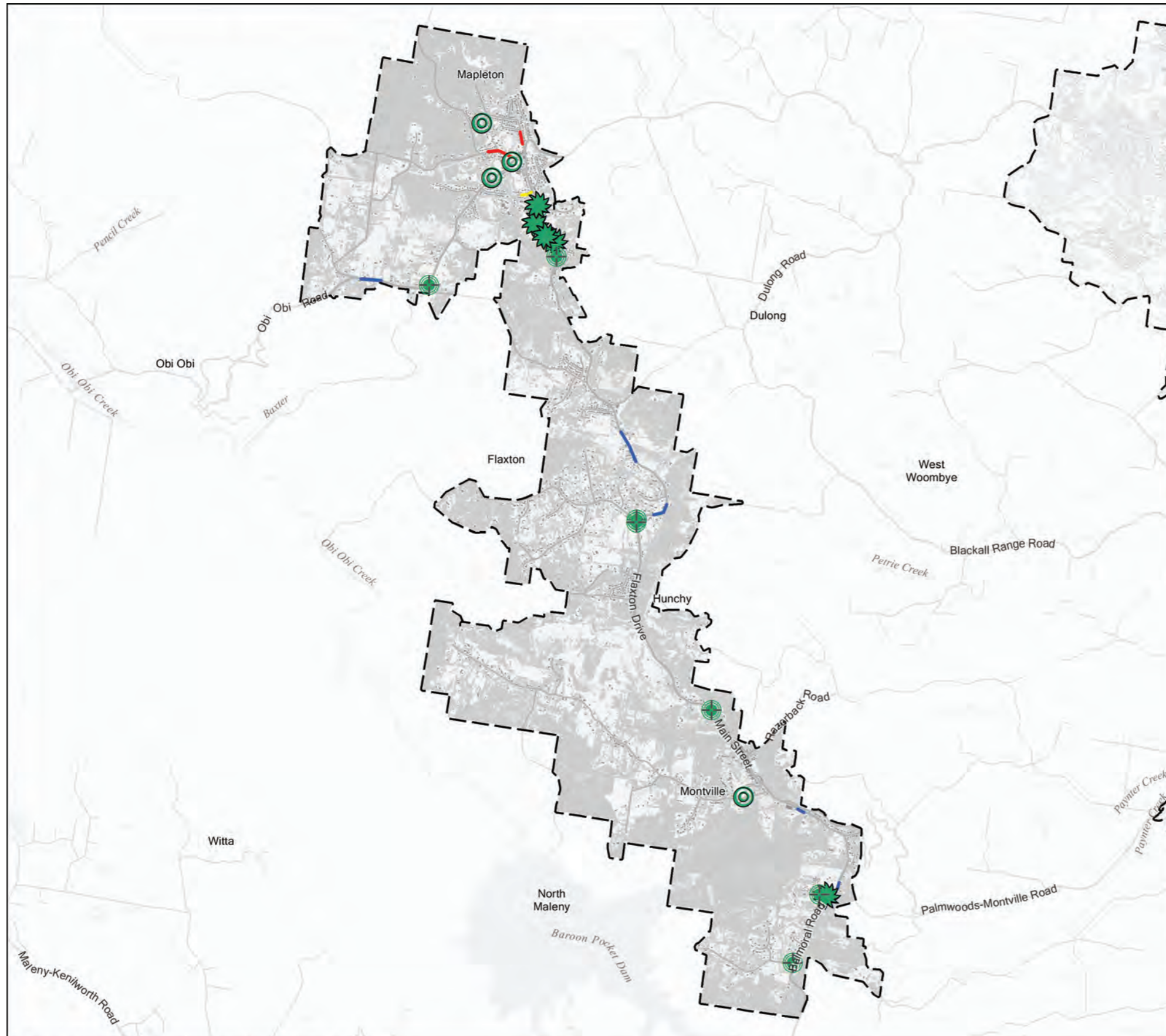
© Crown and Council Copyright Reserved 2014
 Geocentric Datum of Australia 1994 (GDA94)

0 225 450 900 1,350 1,800 Metres
 1:48,000 at A3 size

Path: F:\MapRequests\StreetTreeMasterPlan\Map\Huk\Produced\Maps\FoliageShadeCover_MAPBOOK_Landscape_20160630.mxd

Priority Planting Plan

Blackall Range Local Plan Area



Legend

Priority planting locations

Nodes and Parkland perimeters

- Esplanade no view
- Park perimeter planting
- Space for group planting
- Space for single compact tree
- Space for single large canopy tree
- Vegetative screen or buffer

Priority planting locations

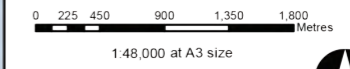
Major thoroughfares and Walkable routes

- Road verge - Key pedestrian route
- Road verge - Local access or residential street
- Road verge - Major thoroughfare
- Local Plan Area boundary
- Priority Development Area (Maroochydore City Centre)
- Priority Development Area (Caloundra South)
- Declared Master Planned Areas (Maroochydore & Palmview)



Disclaimer
 While every care is taken to ensure the accuracy of this product, neither the Sunshine Coast Regional Council nor the State of Queensland makes any representations or warranties about its accuracy, reliability, completeness or suitability for any particular purpose and disclaims all responsibility and all liability (including without limitation, liability in negligence) for all expenses, losses, damages (including indirect or consequential damage) and costs that may occur as a result of the product being inaccurate or incomplete in any way or for any reason.

© Crown and Council Copyright Reserved 2014
 Geocentric Datum of Australia 1994 (GDA94)



1:48,000 at A3 size



Path: F:\MapRequests\StreetTreeMasterPlan\Maps\Huk\ProducedMaps\PPP_MAPBOOK_Landscape_20160628.mxd