

Woombye Streetscape Project

Footpath and underground services works



Monday 14 November to Friday 25 November

Day construction works, various times.

All works weather and site conditions permitting



Blackhall Street, Woombye



Driveway and underground services works

Some temporary changes to access - Woombye Pub and Cellarbrations Bottle Shop driveway

Construction overview

As part of the Woombye Streetscape project, stormwater, electrical and footpath upgrades are taking place.

From 14 to 25 November 2022 (weather dependent) the footpath area from the Hill Street-Blackall Street intersection along Blackall Street, past the School of Arts Hall and Library and across the pub and bottle shop driveway (near Grounded Café) will be under construction. Please refer to Figures 1 and 2 contained in this notice to see the location of these works.

The hall, library, pub, bottle shop and café will remain OPEN during all works, as per normal trading hours.

Some temporary access changes will be in place for the Woombye Pub and Cellarbrations Bottle Shop each week, from Monday 6am to Friday afternoon inclusive.

Please continue to support all local businesses during construction and share this information with customers, staff, suppliers, delivery drivers, friends and family as required.

Construction program – Zone One

Monday 14 – Friday 18 November

- Saw cut and remove existing concrete footpath and kerb
- Install electrical conduits
- Prepare and install stormwater culverts
- Seat retaining wall works continue

Monday 21 – Friday 25 November

- Construct new driveway
- Cure (drying and hardening) concrete before vehicles can drive over it
- Footpath concrete works
- Seat retaining wall works continue

Friday 25 November, from 2pm (estimated time)

- Blackall Street driveway entry to pub and bottle shop re-opens to traffic

What to expect during these works

Community access will **remain available** to the hall, library, café, pub, bottle shop and all other businesses during construction.

All information contained in this communication is accurate at the time of distribution however works and dates are subject to change due to circumstances outside of Sunshine Coast Council's control.

Large trucks and machinery will be operating including the use of concrete saws, jackhammers, and concrete trucks.

While the construction team will try to mitigate noise as much as possible, intermittent noise is to be expected.

Dust mitigation measures will be in place.

Temporary changes to traffic conditions

Pub and bottle shop access (refer Figure 2)

- Each Monday to Friday - up to Friday afternoon only:
 - Vehicle access via Barts Road only
- Each Friday afternoon through to Sunday:
 - Vehicle access via Blackall Street driveway OR Barts Road.

Signage will be in place to help redirect customers and suppliers/deliveries.

Partial lane closures and traffic control

Traffic flow will be retained along Blackall Street and adjacent roads. Some partial lane closures and traffic control may be required when machinery is operating.

On-street parking

For safety reasons some on-street carparks and footpath areas will be temporarily closed off during construction.

Please follow the instructions of traffic controllers and obey signage.

Thank you for your patience

We thank our community for your patience and understanding as we undertake these streetscape works.

Please continue to support local businesses during the construction period.

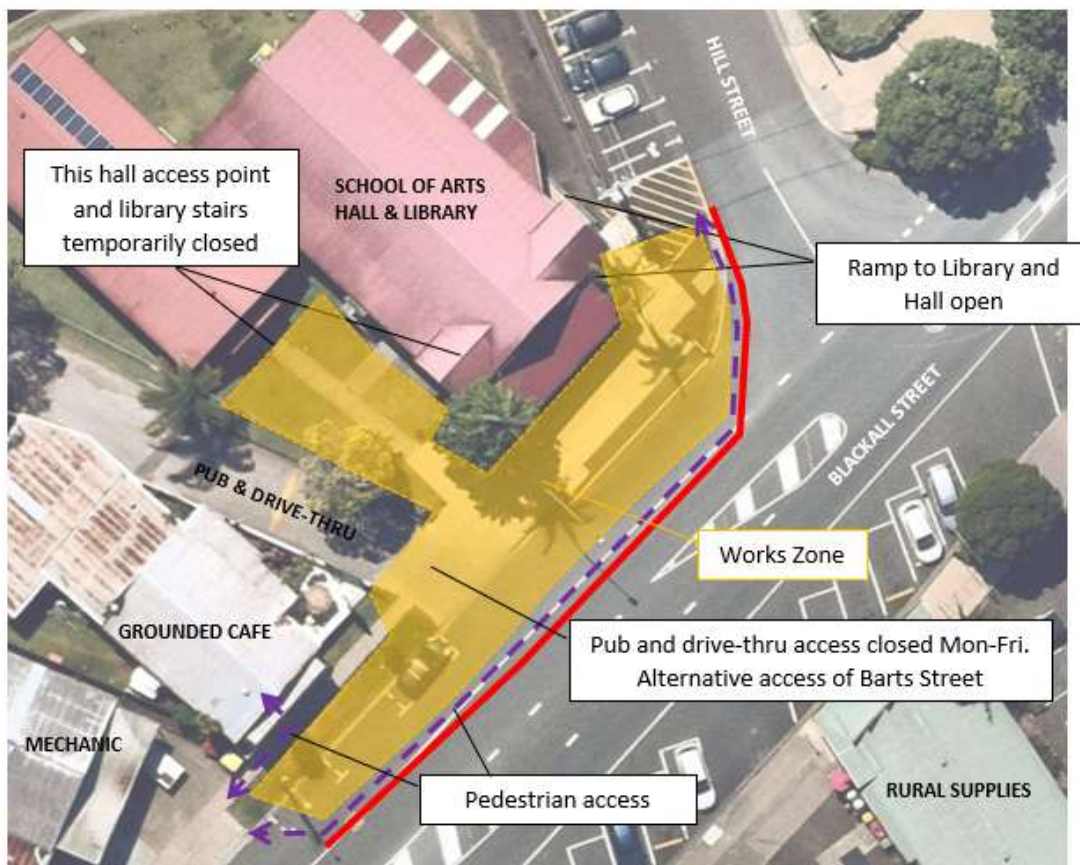


Figure One. Construction area. Underground services, footpath and driveway crossover works
All works subject to weather and site conditions



Figure Two. Temporary access changes to pub and bottle shop. Each Monday to Friday afternoon. All works subject to weather and site conditions

Contact the project team or register for construction updates

For any questions about these works or to register for emailed construction updates, please email the project team on: woombyestreetscape@sunshinecoast.qld.gov.au

You can also contact Council's customer service team on (07) 5475 7272 (Monday to Friday 8.15am – 5pm). Please quote Woombye Streetscape Project.