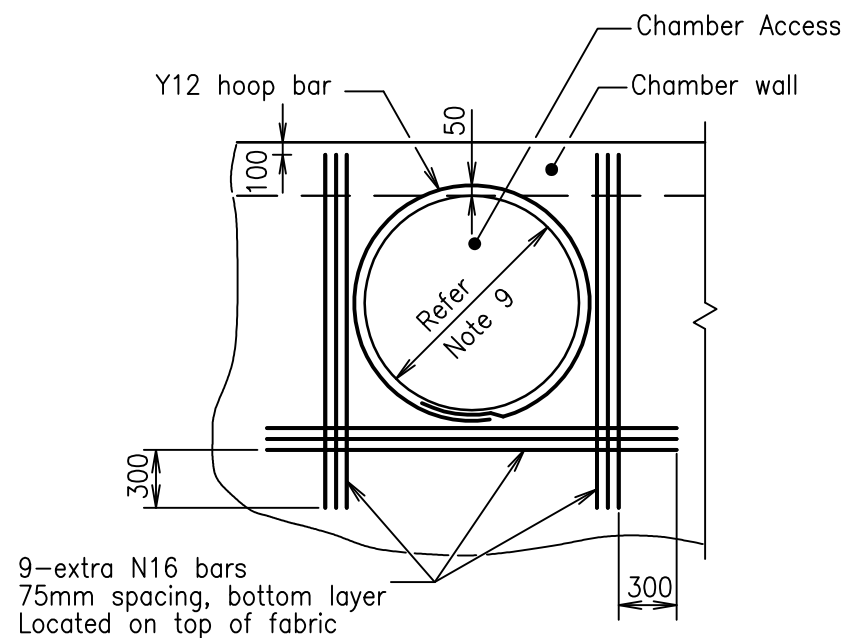
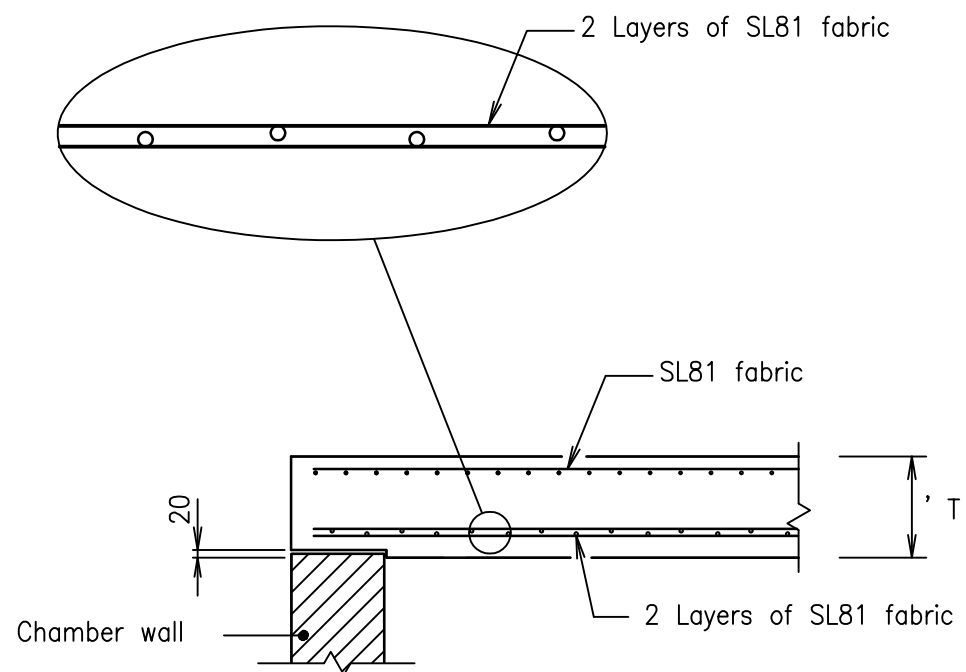


FABRIC REINFORCED SLAB	
SHORT SPAN	SLAB THICKNESS 'T'
1200 TO 1600	225
1800 TO 2400	250
2600 TO 3000	275

TYPICAL SLAB REINFORCEMENT



SLAB REINFORCEMENT AROUND CHAMBER ACCESS



TYPICAL SECTION

NOTES

1. Concrete N32/20 in accordance with AS 1379 and AS 3600.
2. Reinforcement:- SL81 Fabric to AS 1304; Bars N16, Grade 400 to AS1302.
3. All laps in reinforcement shall be:- N12 - 300, N16 - 400, Fabric - 250.
4. Formwork in accordance with AS 3610.
5. Designed to Austroads Bridge Code, W7 wheel load, dynamic factor 0.4.
6. Maximum fill over roof slab shall be 3000mm.
7. Reinforcement cover 45 min.
8. Refer Project Drawings for details of chamber walls and floors.
9. For sections at chamber access refer Standard Drawing DS-010.
10. All dimensions in millimetres.

These drawings have been developed in consultation between the participating Councils.
BEFORE USE, the user shall confirm that the drawing has been adopted by the appropriate Council.

Rv.	DATE	REVISIONS
A	10/12	ORIGINAL ISSUE



INSTITUTE OF PUBLIC WORKS ENGINEERING AUSTRALIA
QUEENSLAND DIVISION INC.
STANDARD DRAWINGS

ACCESS CHAMBER
ROOF SLAB - RECTANGULAR
FABRIC REINFORCEMENT

DS-014

Rv.