

Project number: H3747

Brisbane Road Upgrade

Stages 2 and 3

Mooloolaba Transport Corridor Upgrade



Night works – asphalt (bitumen) works



Sunday 11 December to Tuesday 20 December 2022 (inclusive) 6pm to 6am



Foote Street, Mooloolaba



Temporary changes to traffic conditions each evening including part road closure

Construction overview

Construction is continuing on Stages 2 and 3 of the Brisbane Road Upgrade project.

From Sunday 11 December to Tuesday 20 December (inclusive) new asphalt (bitumen) and line marking will take place in Foote Street, Mooloolaba.

These works are being undertaken at night to ensure traffic flow can be maintained along Foote Street and Brisbane Road during the daytime peak traffic periods.

The project team will continue to liaise directly with adjacent residents and businesses prior to and during construction.

Please see the following information for further details. Figure 1 on page two of this notification shows the construction area.

Temporary changes to traffic conditions each evening

To enable traffic to continue to use Foote Street during the day, night works will take place under a full road closure.

This means that part of Foote Street will be **closed to through traffic each evening** before being **reopened to all traffic each morning** (one lane each way).

Residents and visitors of Foote Street and Burnett Street will be detoured via River Esplanade each night.

Pedestrian access to Foote Street will always remain available.

Residents are asked to not park vehicles in the construction area (see Figure 1, red shaded area) of Foote Street between the hours of 6pm and 6am so that the new road surface can be constructed.

Night-time access to the Coles Express Shell Service Station will be via Brisbane Road only.

Emergency service access will always remain available to homes and businesses, under traffic control.

Access for residents/businesses in the closed road construction area

While traffic controllers will try and maintain local vehicle access to all Foote Street properties, at times access may not be possible due to the extent of construction activity.

Should 24/7 access to private vehicles be required (for example, shift workers, transportation arrangements for family or friends, travel arrangements etc), the project team recommends parking your vehicle outside of Foote Street each evening to enable guaranteed access to your vehicle.

All information contained in this communication is accurate at the time of distribution however works and dates are subject to change due to circumstances outside of Sunshine Coast Council's control.

Alternative, free on-street parking is available on nearby streets, including the Charles Clarke public car park in River Esplanade.

We ask that Foote Street residents and visitors in the closed road area limit vehicle travel as much as possible each evening.

What to expect during these works?

The construction team will make every effort to minimise impacts to the community however nearby residents and businesses can expect intermittent construction noise including the operation of heavy machinery and large vehicles including vacuum trucks.

Temporary lighting and reversing beepers must be used for safety reasons during night works.

For residents sensitive to noise or light, please consider closing blinds and windows and using fans or air conditioning where possible.

Please allow an extra 10 minutes of travel time when travelling near Foote Street during these works.

Register for project updates and/or contact the project team

To register for construction updates, email your details to mtcu@sunshinecoast.qld.gov.au

For further information, you can contact the project team on 1800 531 597 (during office hours, Monday to Friday 8.30am – 5pm) or email mtcu@sunshinecoast.qld.gov.au

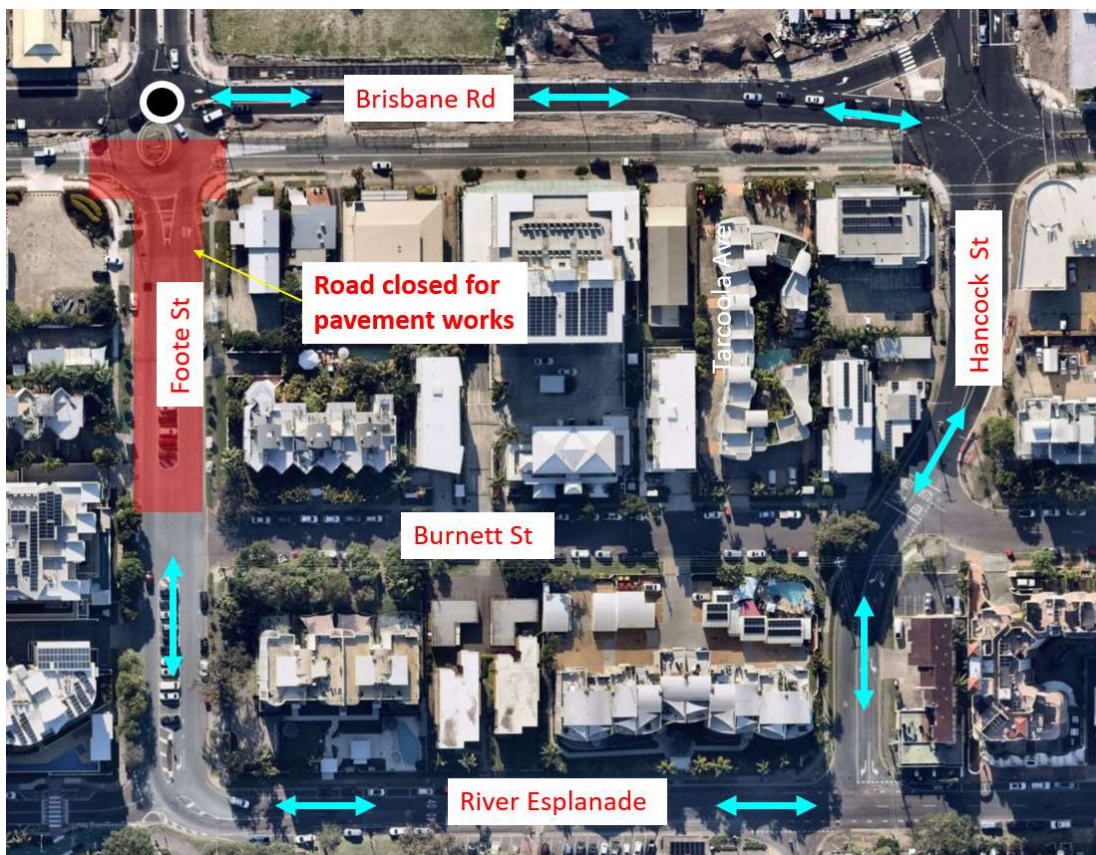


Figure 1. RED area shows construction zone
Night works Sunday 11 December to Tuesday 20 December 2022 (inclusive) 6pm to 6am
Foote Street, Mooloolaba

- Foote Street partial full road closure (to vehicles) each evening with changes to traffic conditions and detours in place
- Access to Coles Express Shell Service Station each evening via Brisbane Road
- Foote Street reopens to through traffic each day
- Pedestrian access to/from Foote Street always remains available

**These works are subject to change dependent upon weather, site conditions and equipment and materials availability.*